

L.v. BEETHOVEN



W.A. MOZART



# NOTENHEFT

---

F. SCHUBERT



J. HAYDN



J. STRAUSS



Nr. 408

Studien für Flöte

1961 Adolf Scherbaum

Die Etuden können (langsam) sehr rasch)

staccato — legato —

teilweise gebunden —

„ gestoßen —

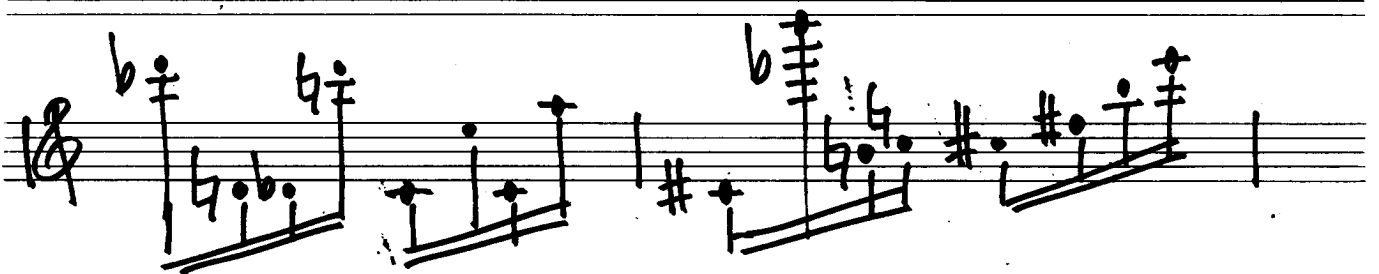
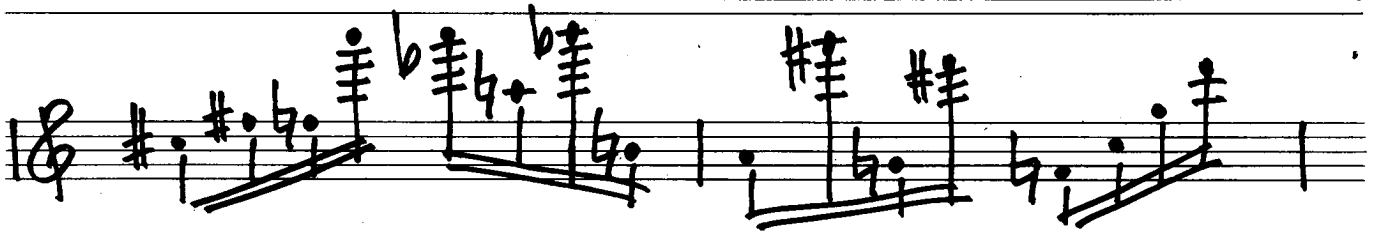
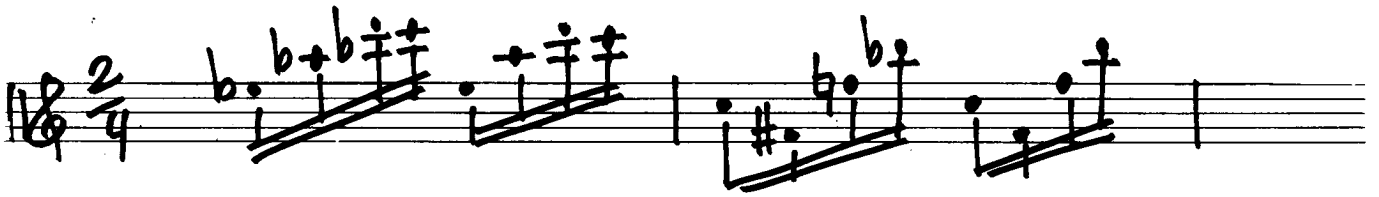
( gespielt werden ) —

( auch transponiert (kleine Sek.)

große „  
Terz  
Quint  
Sext )

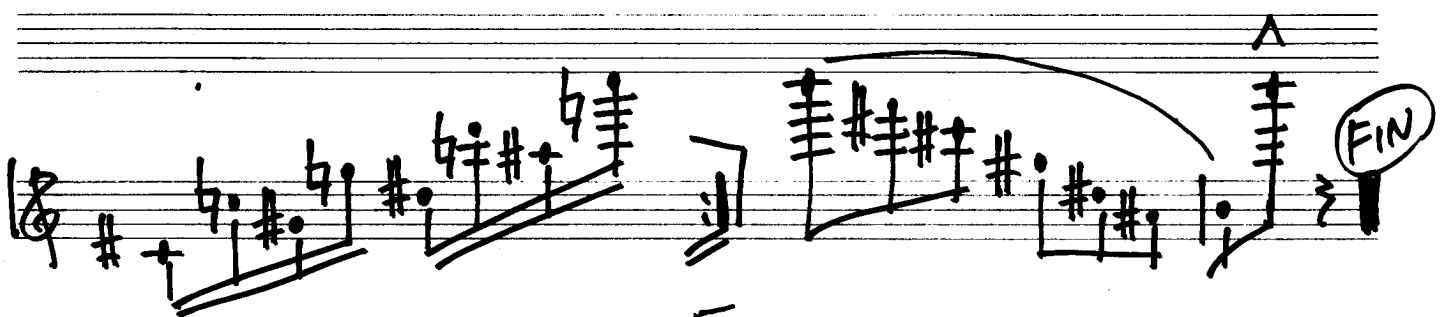
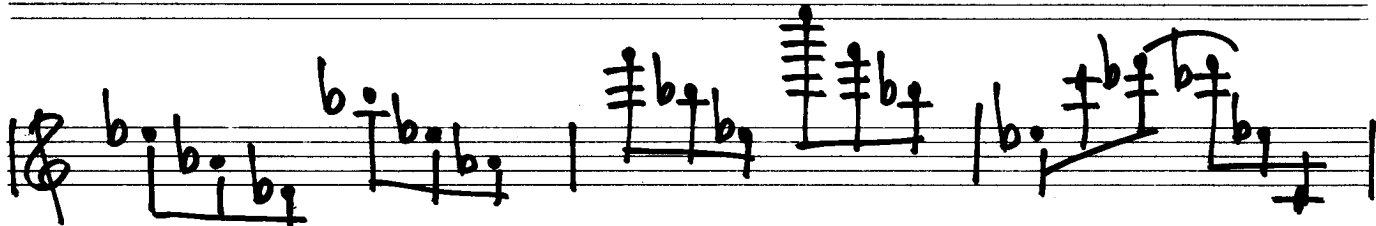
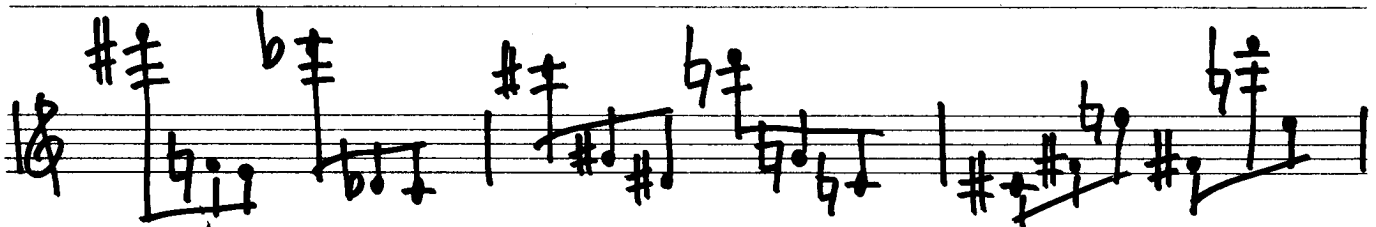
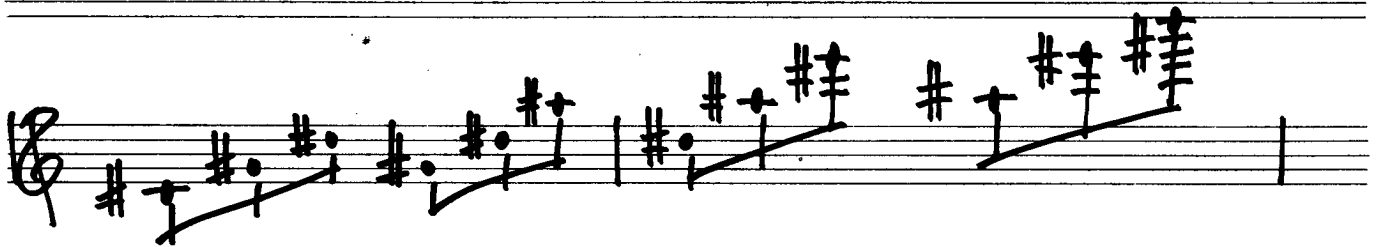
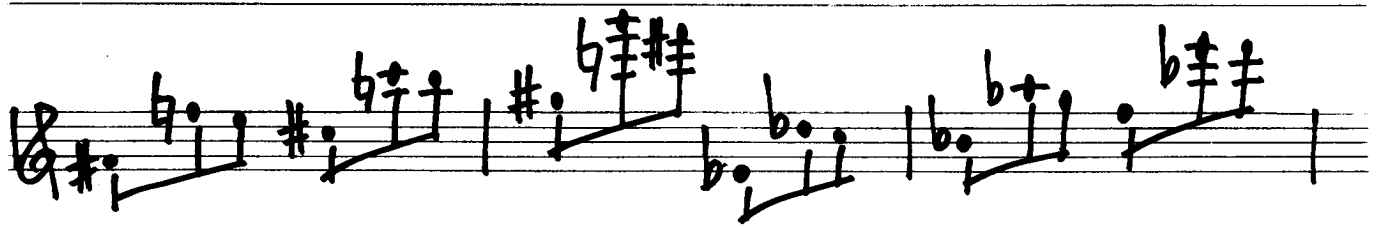
( Atemzeichen dem Spieler  
überlassen )

1.

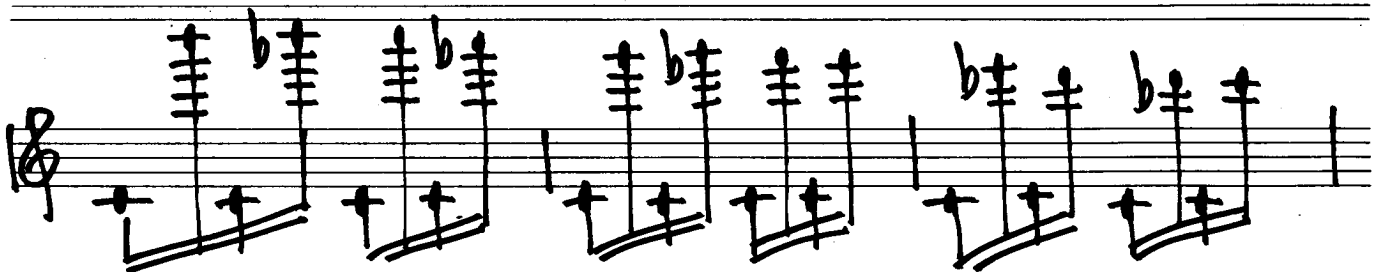
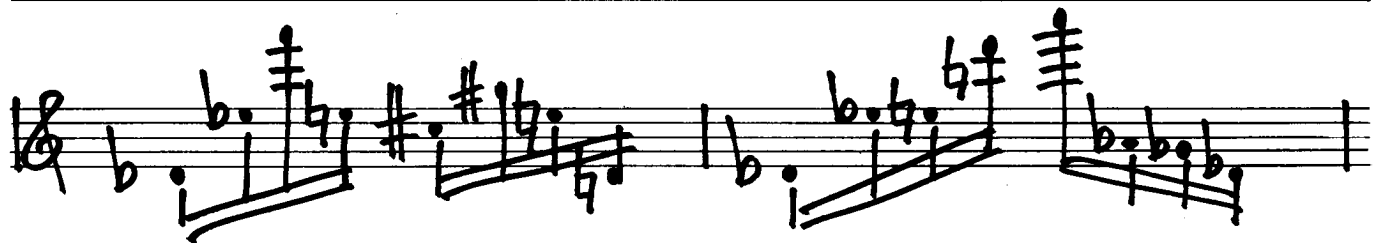
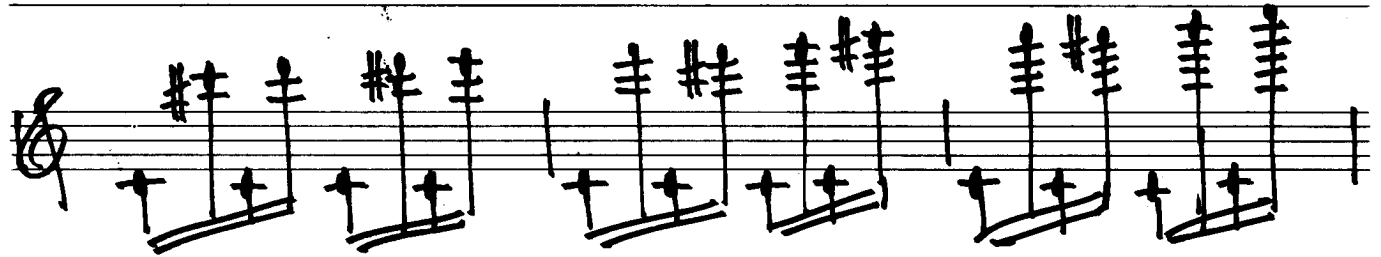
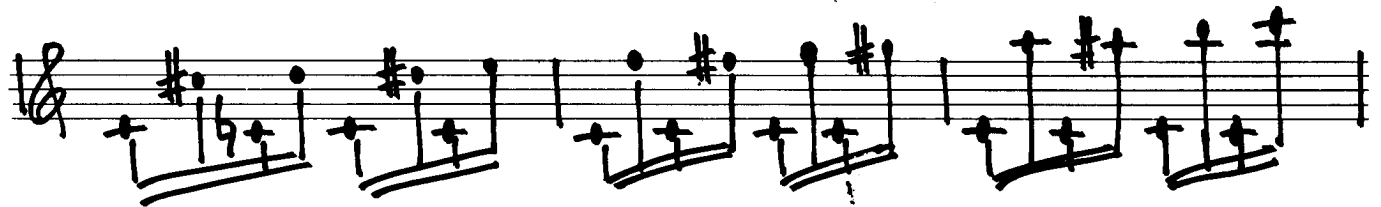
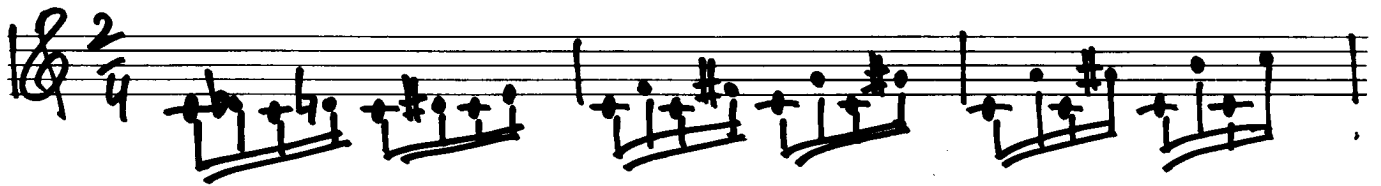


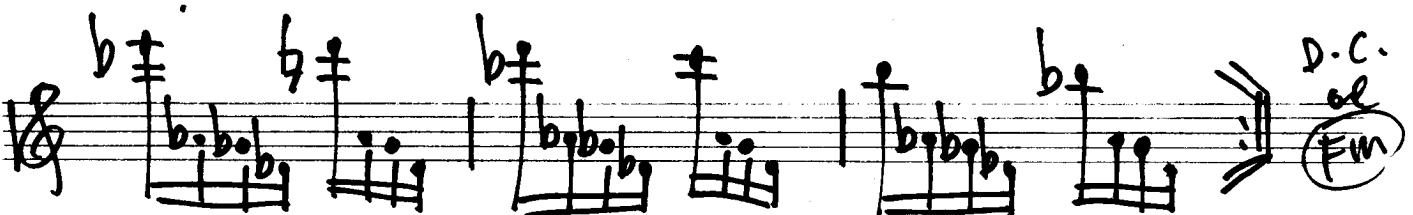
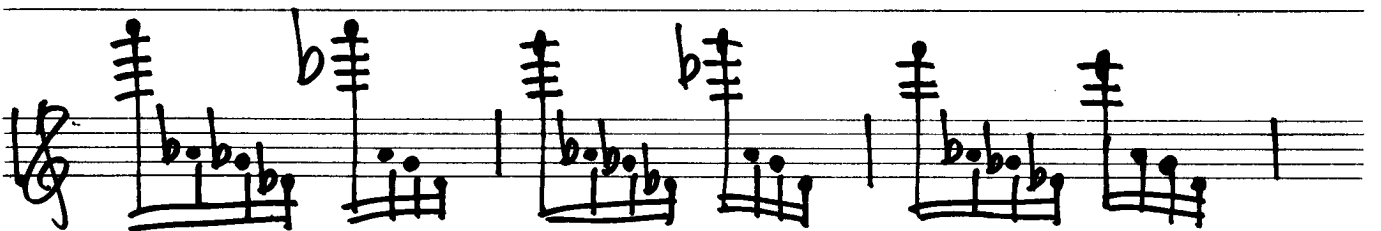
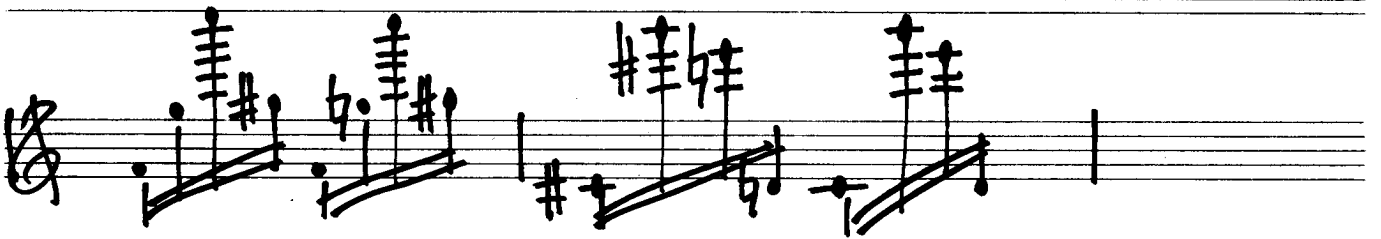
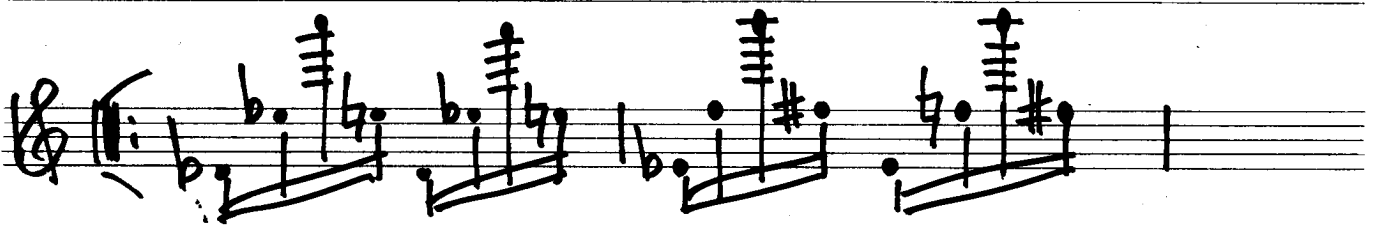
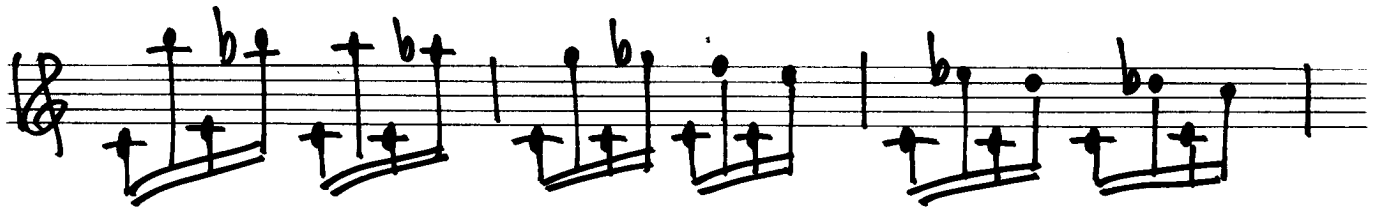
2x  
D.C.  
al  
Fin





3.

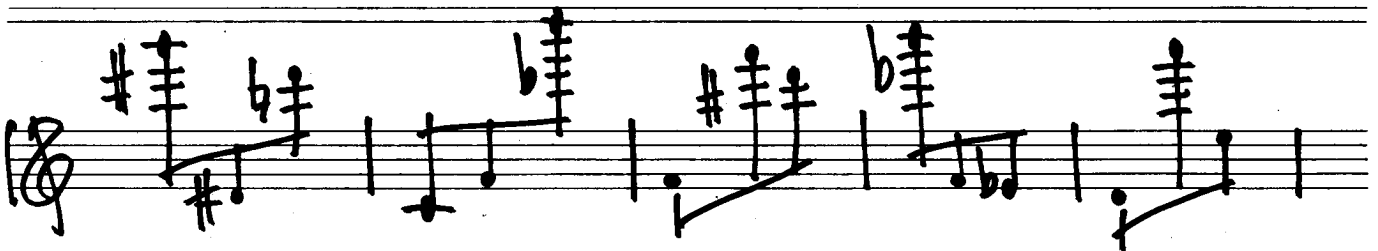
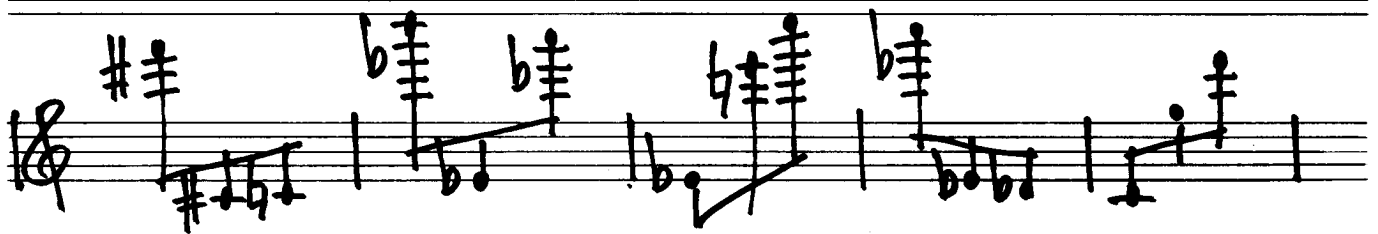






4

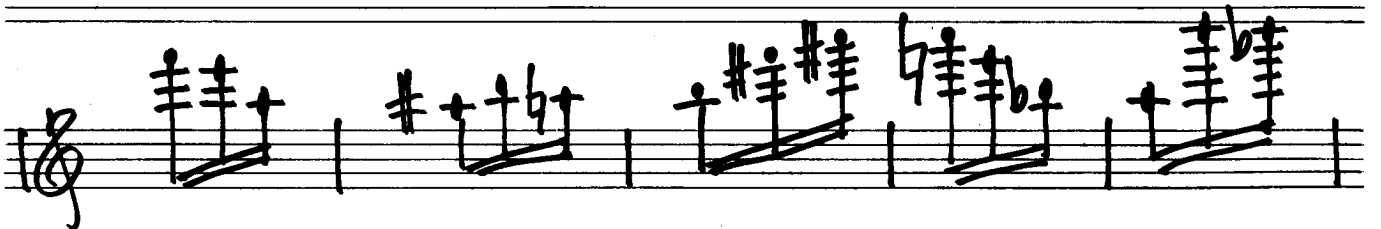
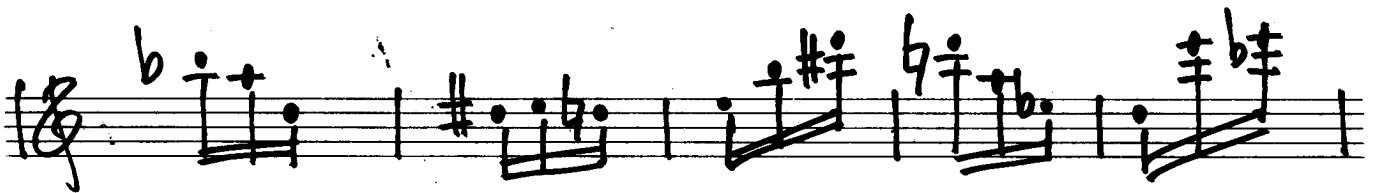
*Empire state.*





1+ leg.  
2+ stacc.  
3+ leg.

5.



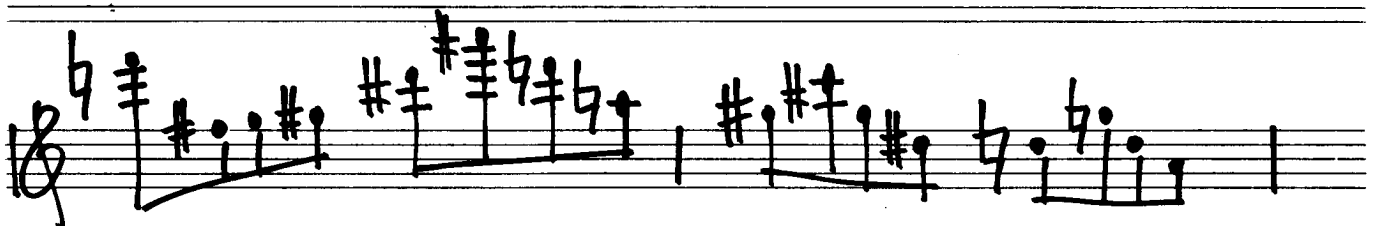


6.

Alleg.  
2. stand.



leg. 



1967  
Adolf Scherbaum

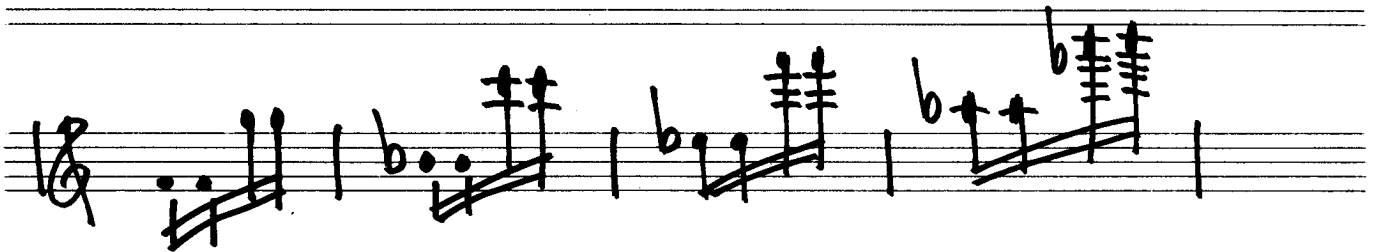
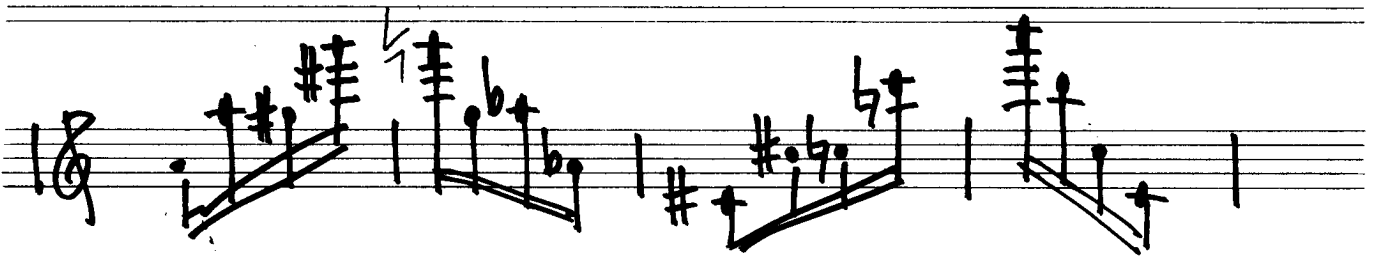


7 Studien für Flöte

Band. [2.]

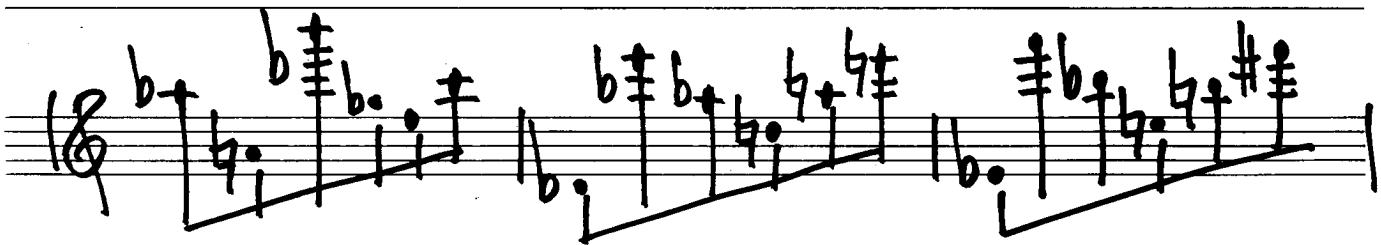
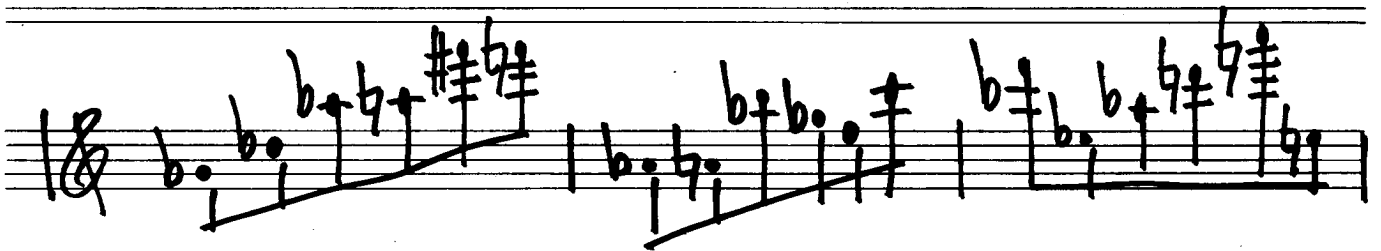
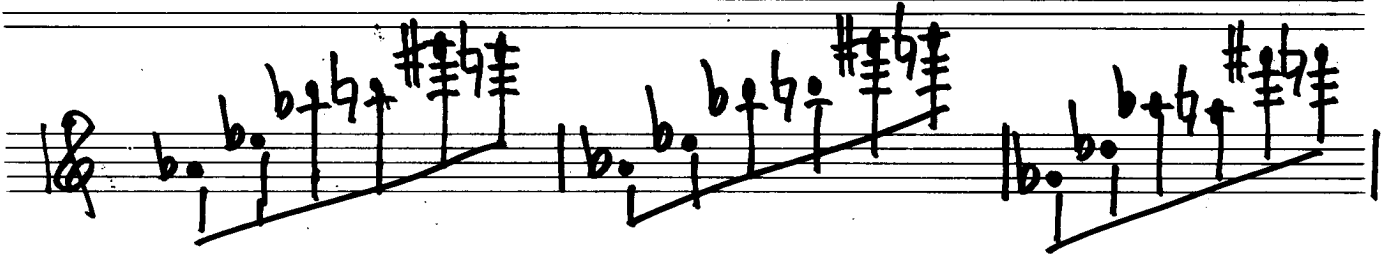
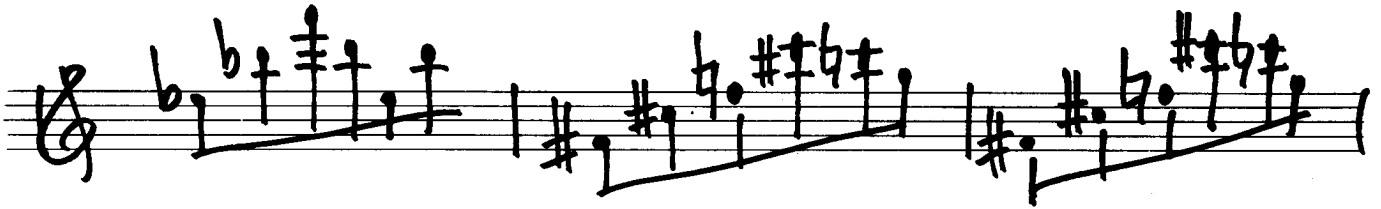
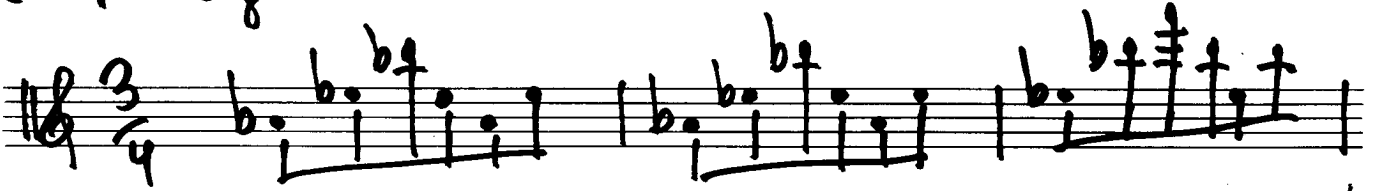
1.

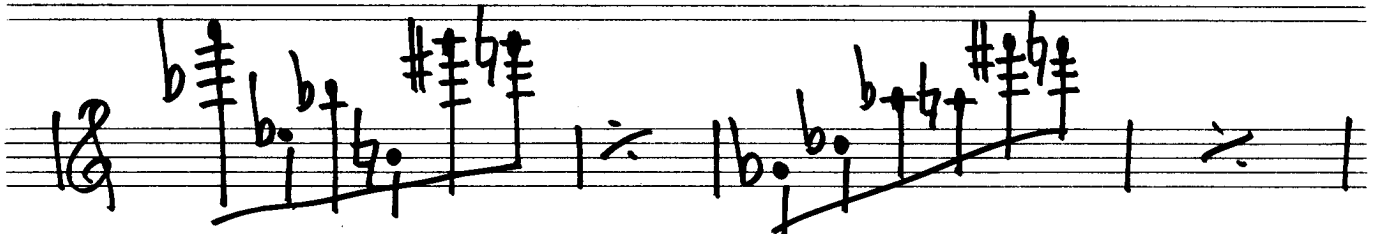
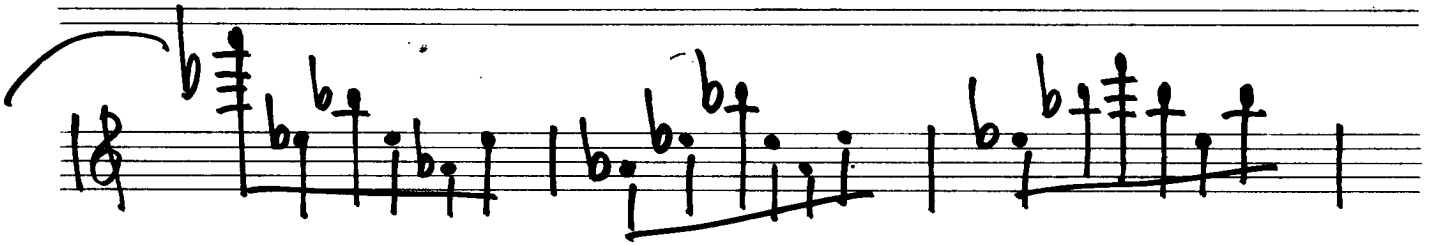
17



2.

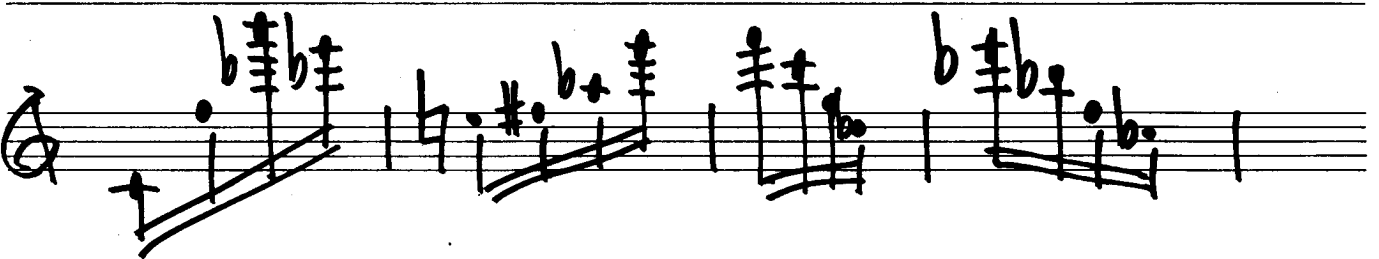
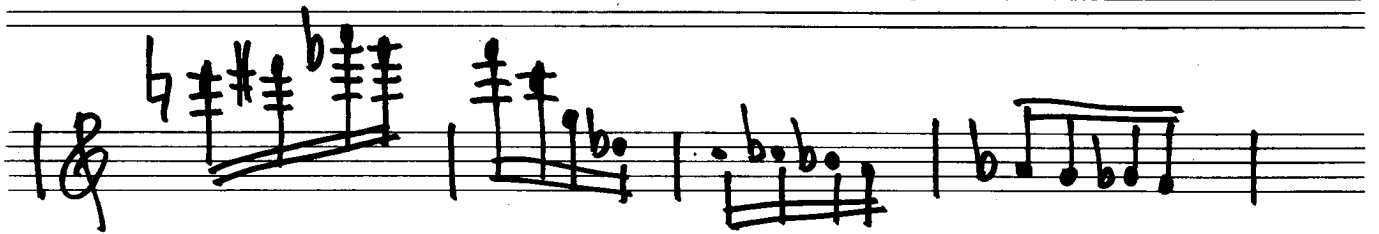
*sempre leg.*

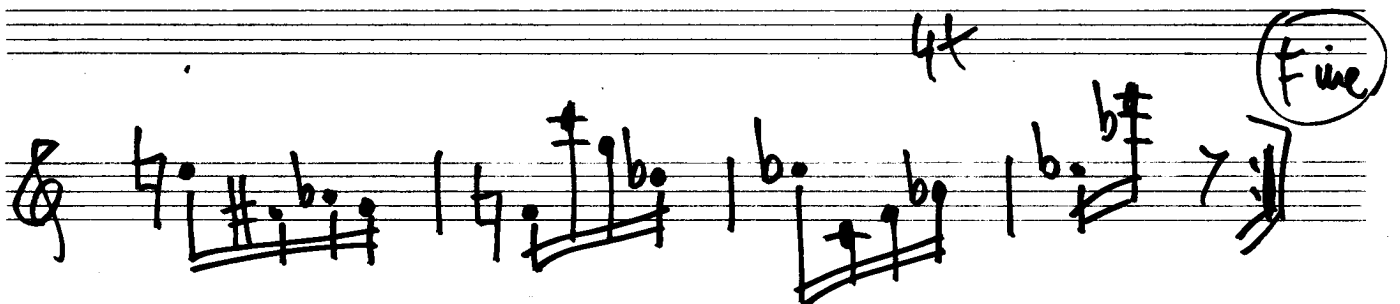
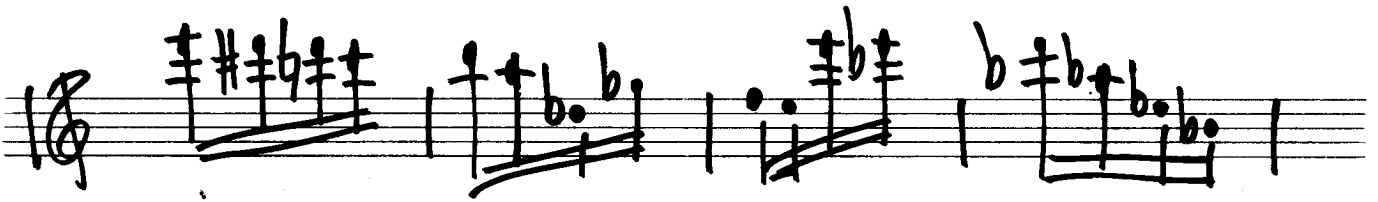
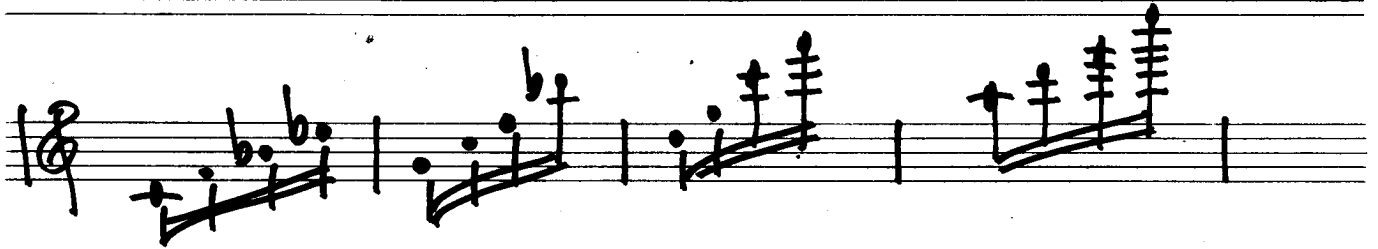




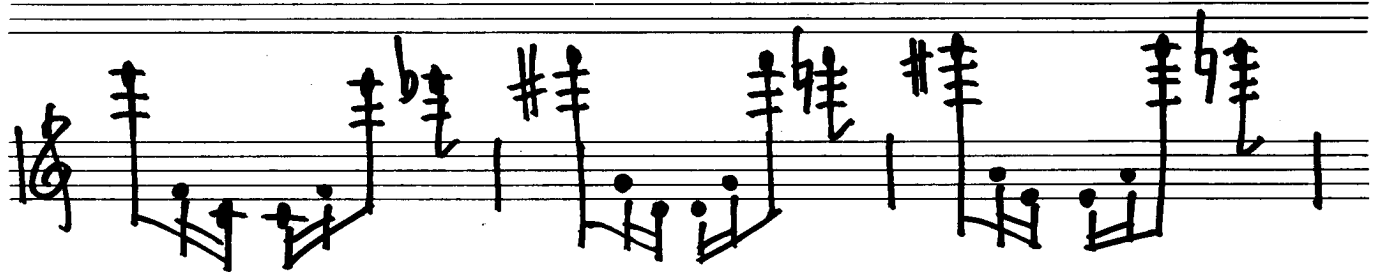
3.

stacc.





4.

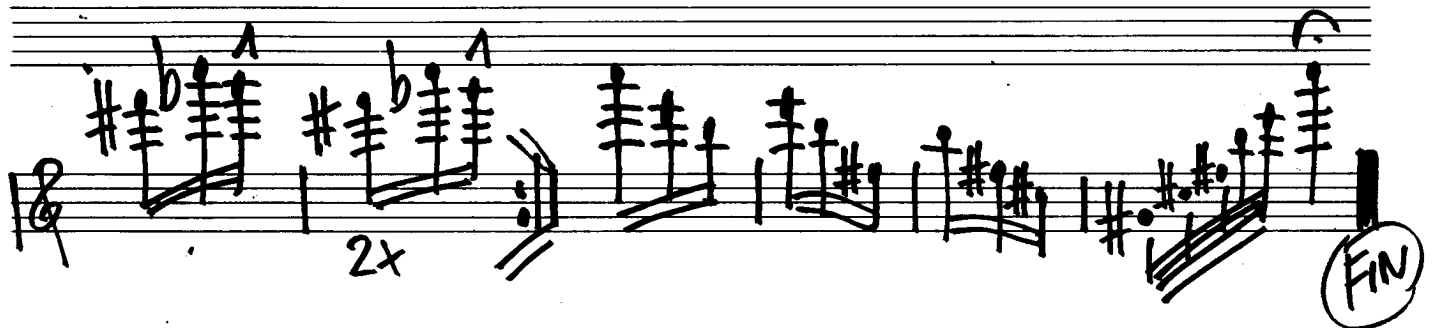
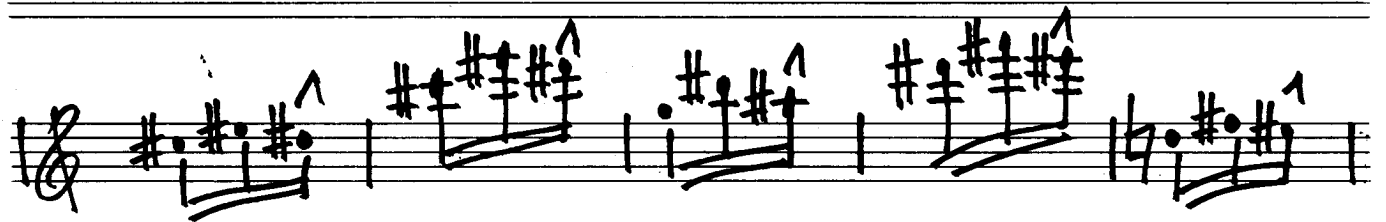
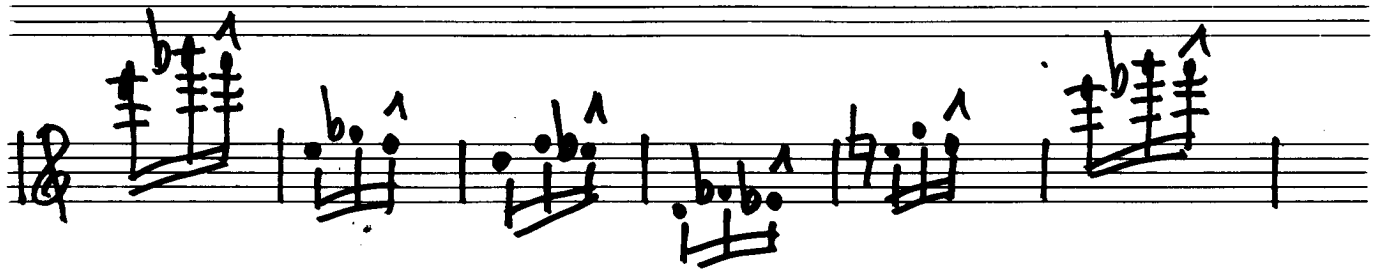




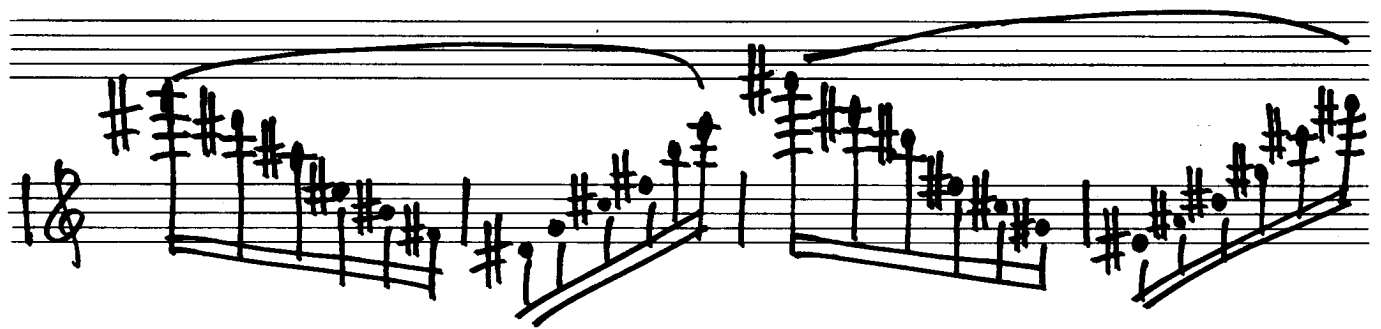
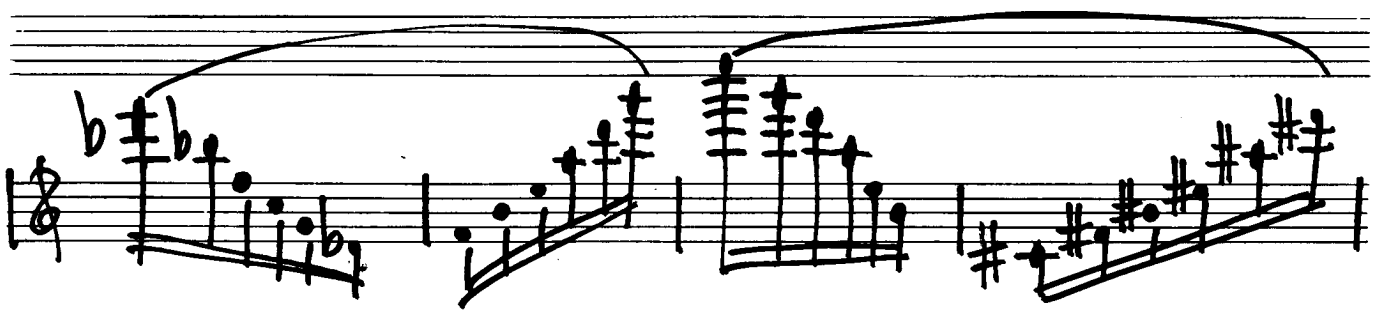
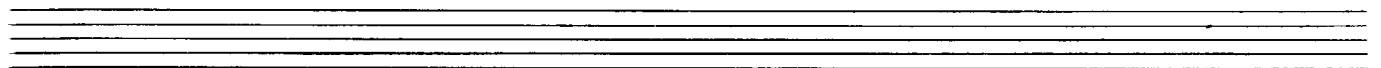


legato

5.



6.



Clacc. Prestissimo 7.

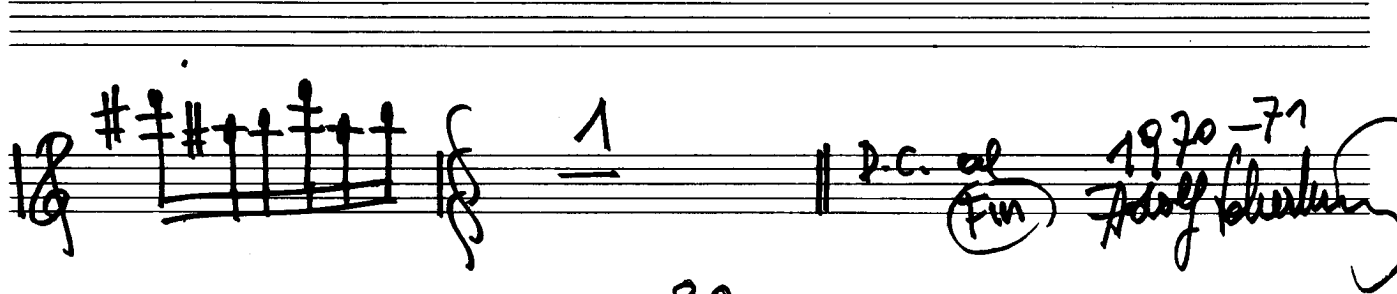
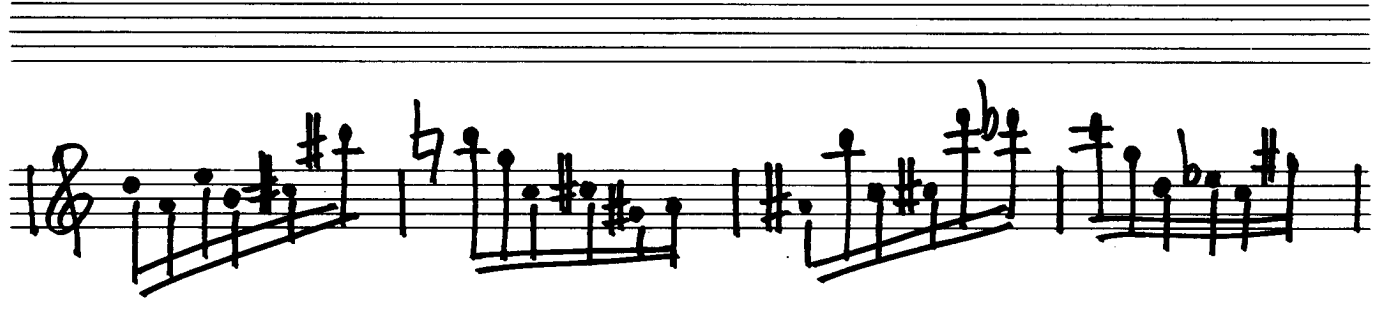
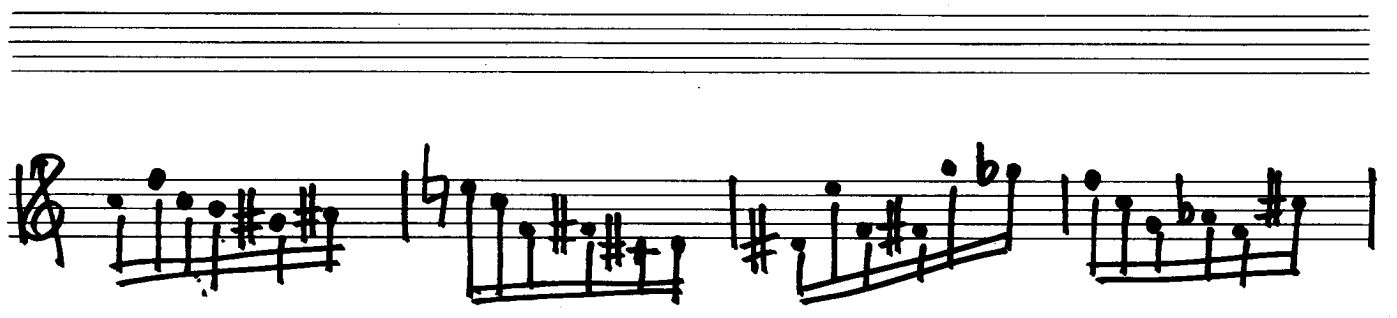
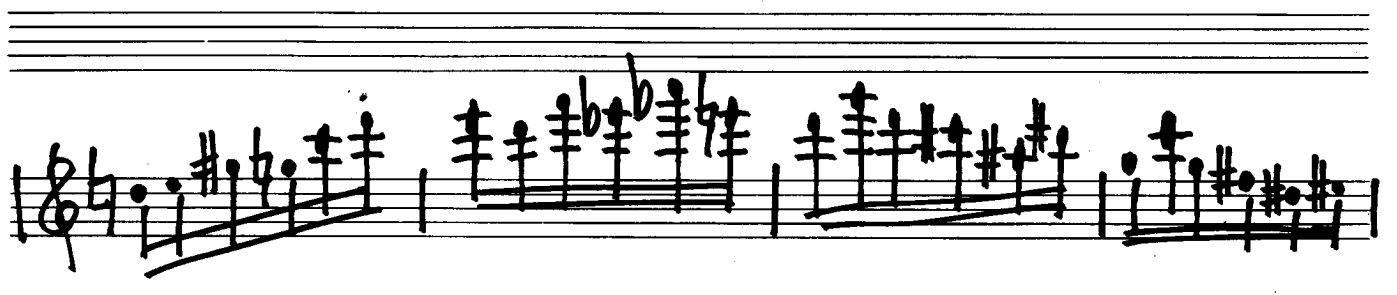
Handwritten musical notation on a single staff in treble clef, 3/8 time signature. It contains six measures of music with various accidentals and slurs.

Handwritten musical notation on a single staff in treble clef, 3/8 time signature. It contains six measures of music, ending with a double bar line and a box labeled "FIN".

Handwritten musical notation on a single staff in treble clef, 3/8 time signature. It contains six measures of music with various accidentals and slurs.

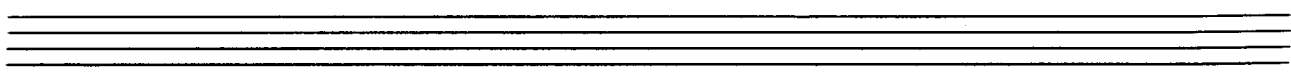
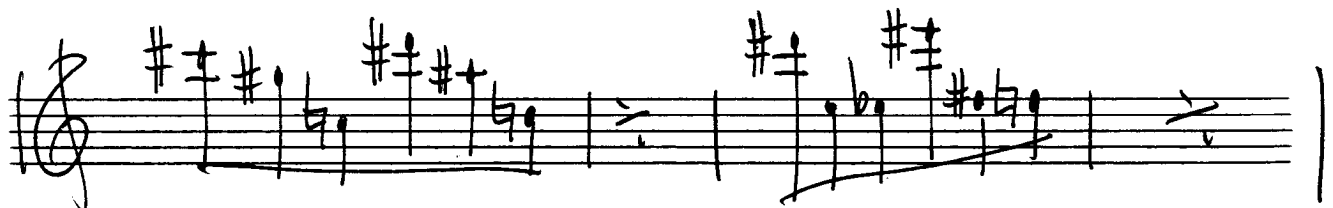
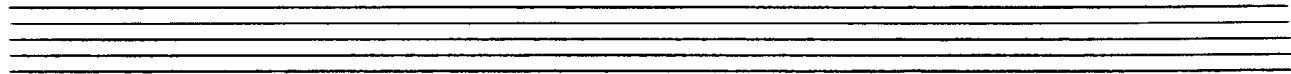
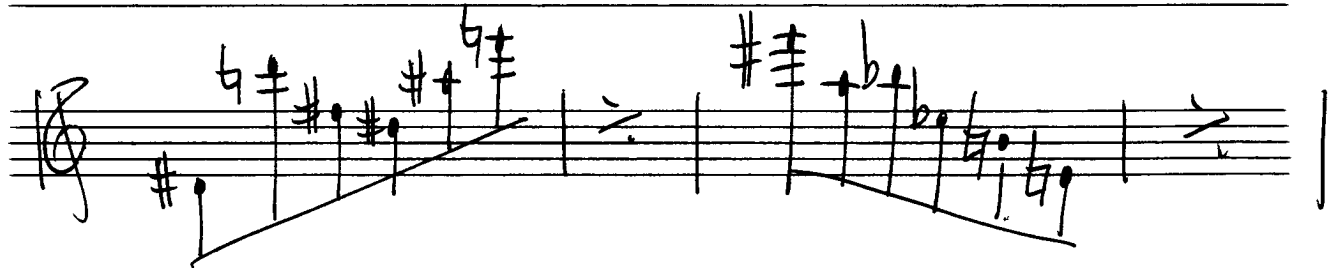
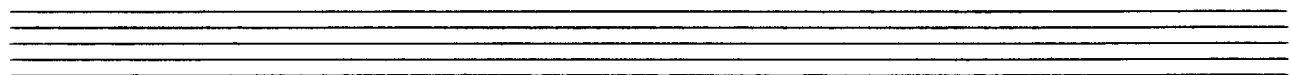
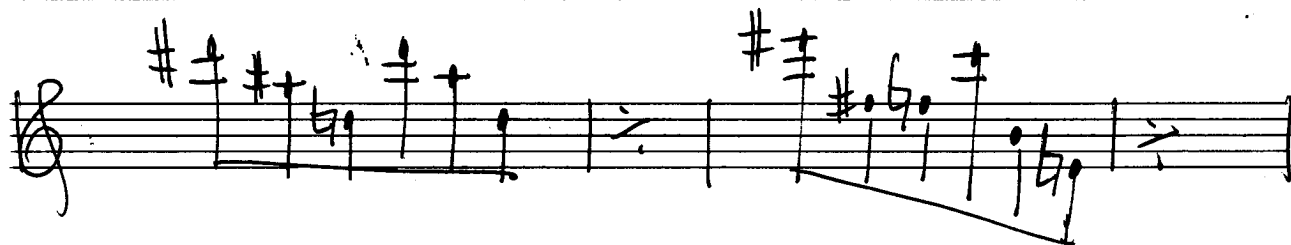
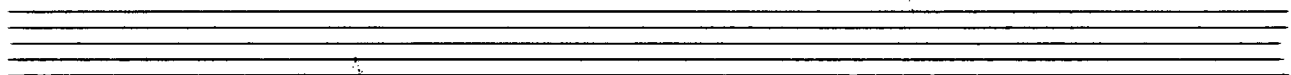
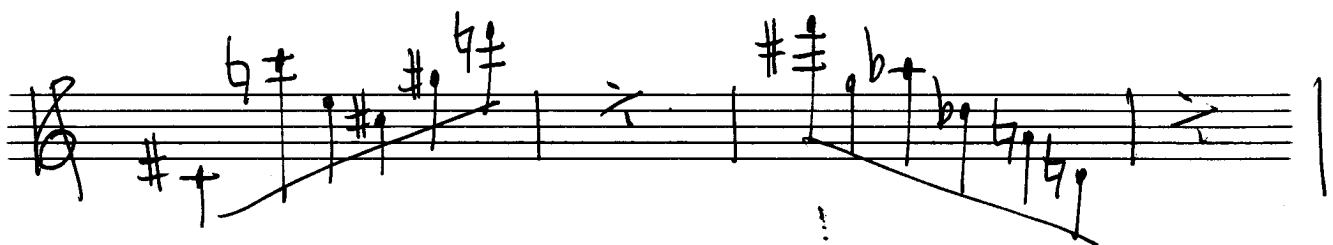
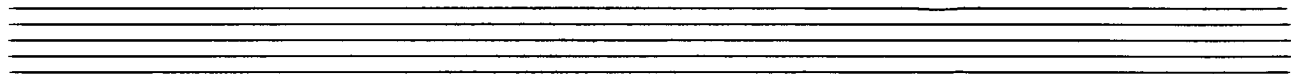
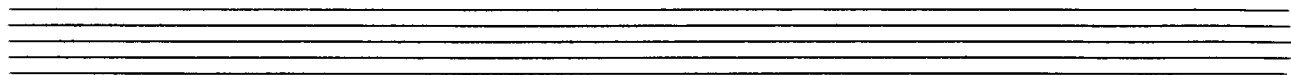
Handwritten musical notation on a single staff in treble clef, 3/8 time signature. It contains six measures of music with various accidentals and slurs.

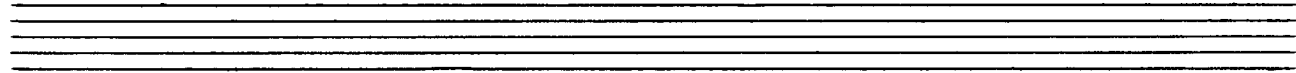
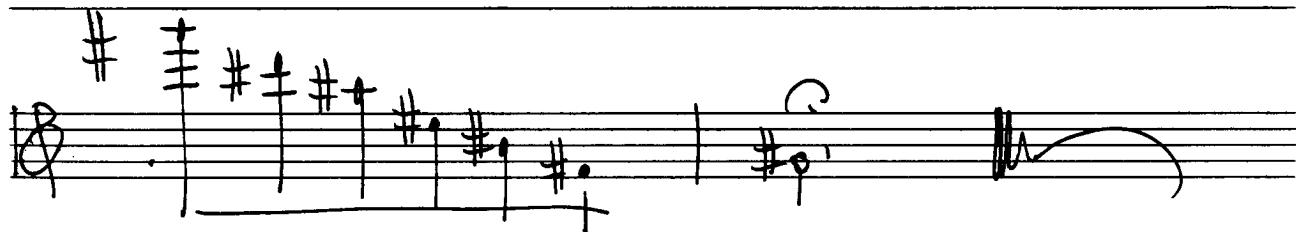
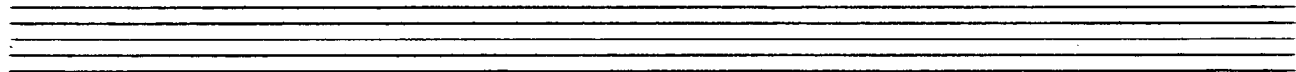
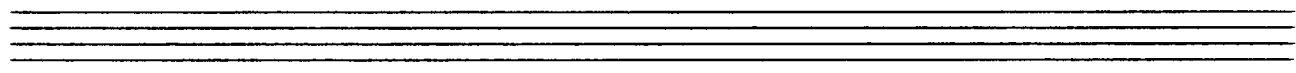
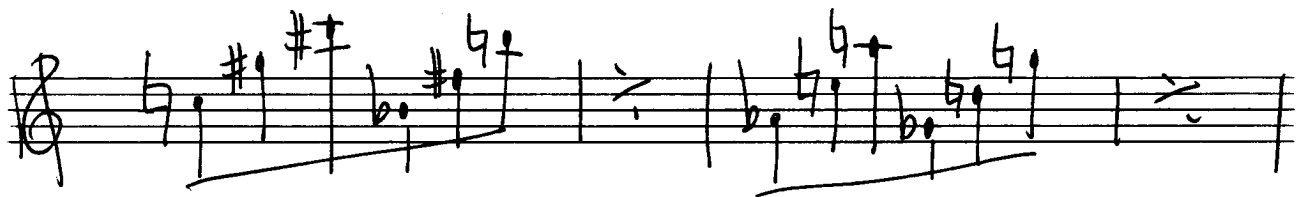
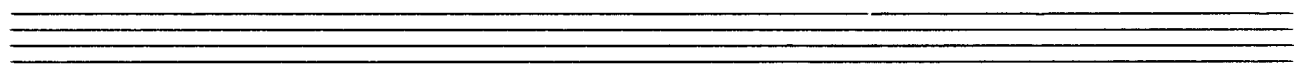
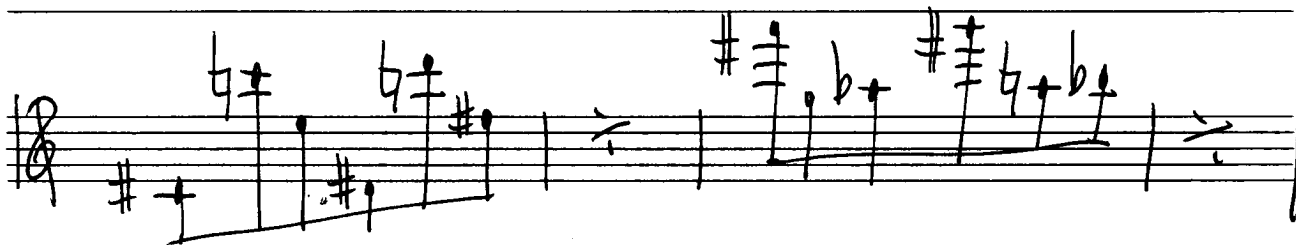
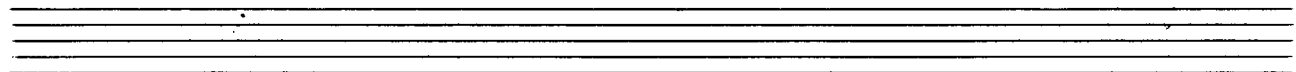
Handwritten musical notation on a single staff in treble clef, 3/8 time signature. It contains six measures of music with various accidentals and slurs.

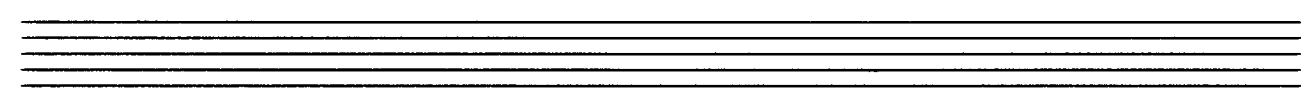
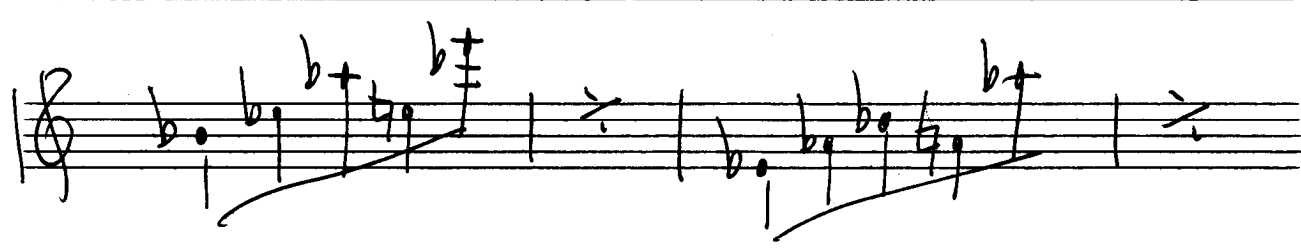
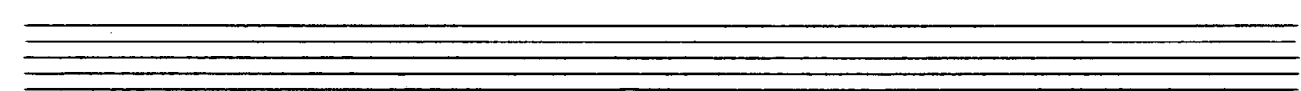
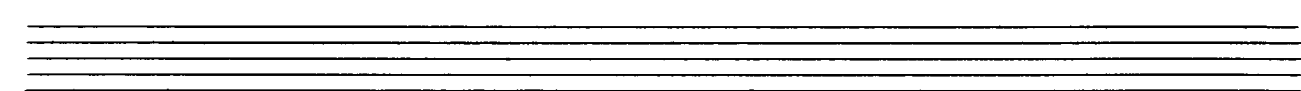
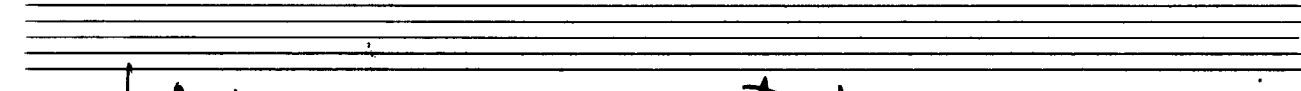
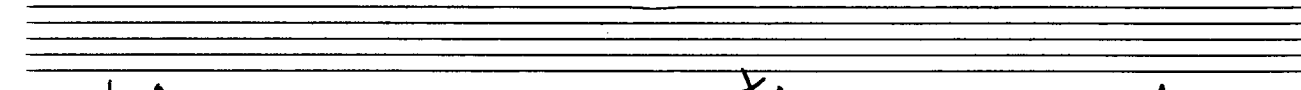
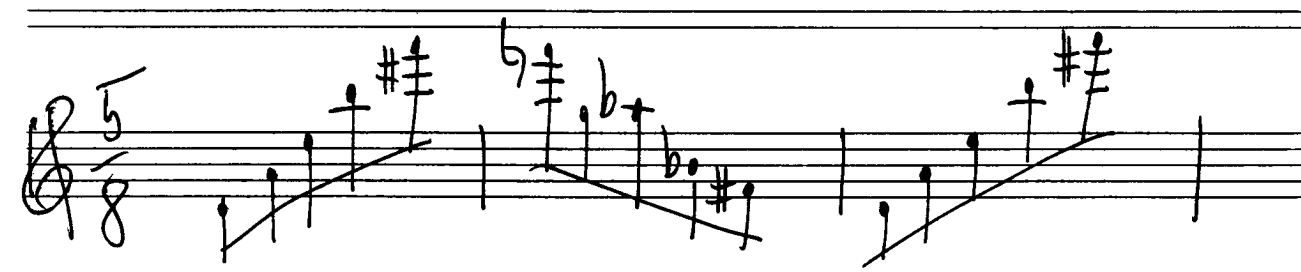
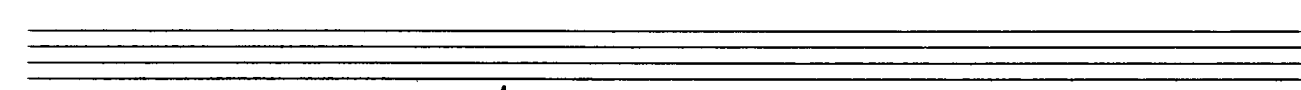
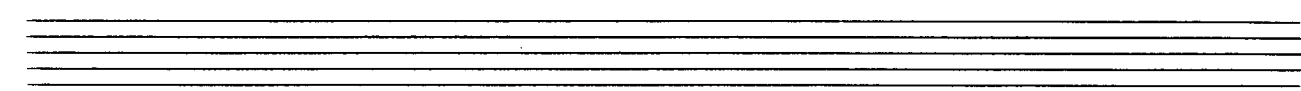


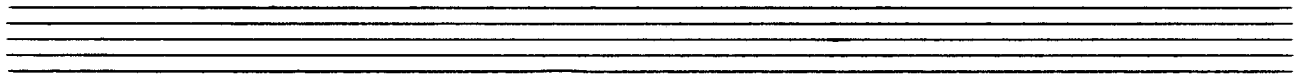
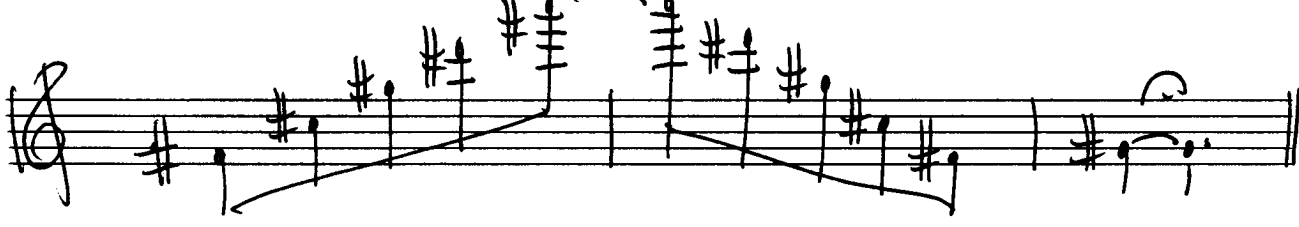
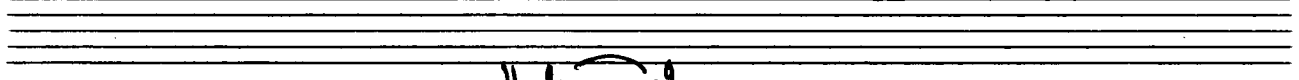
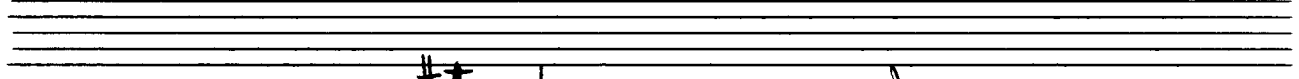
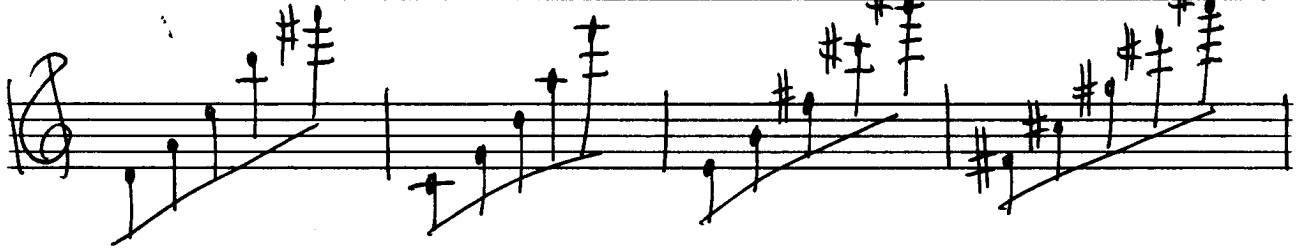
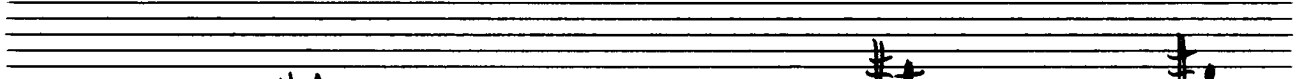
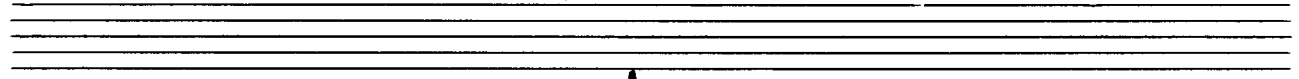
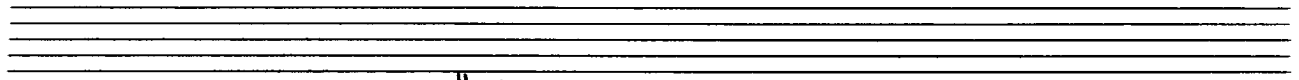
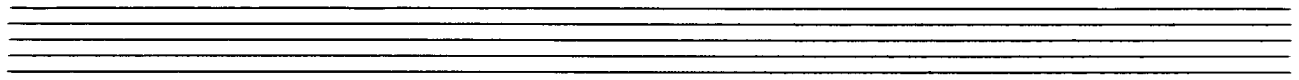
(Studien f. Flöte, Bd. 3)





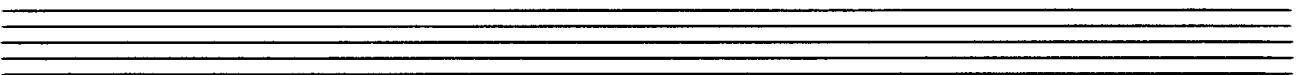
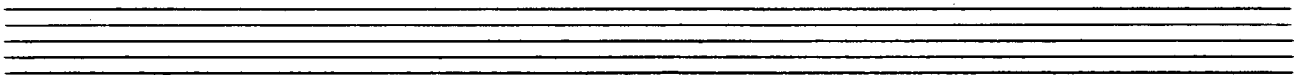
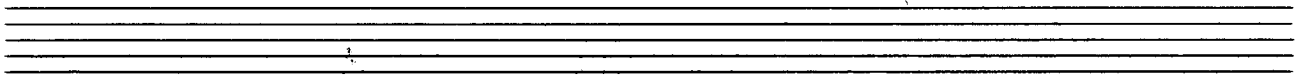
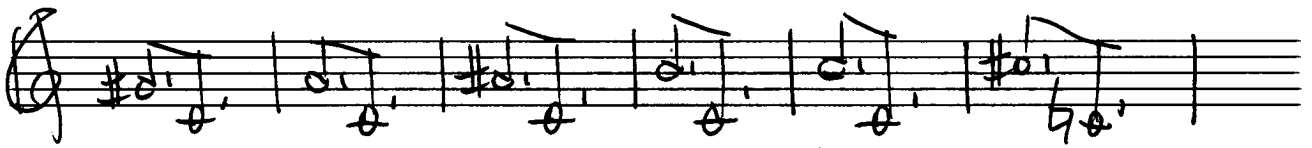
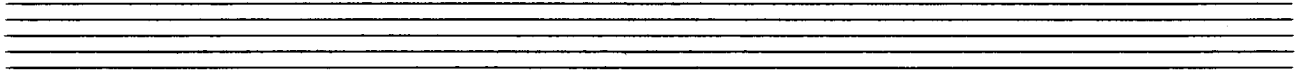
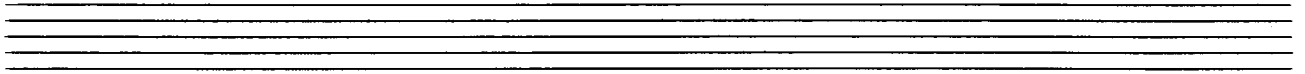






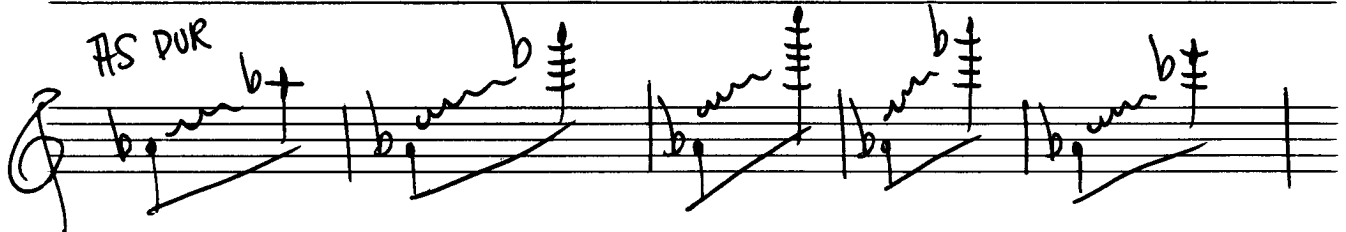
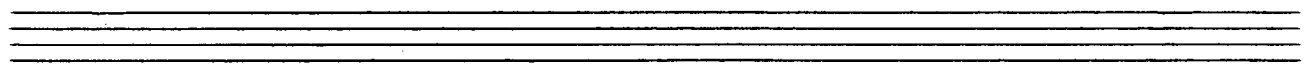
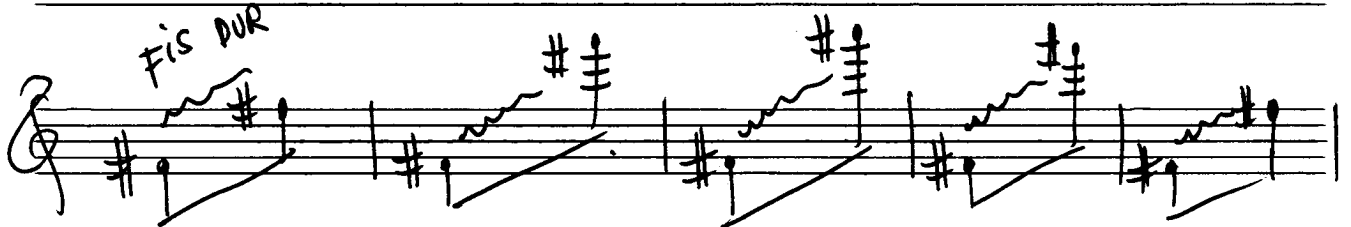
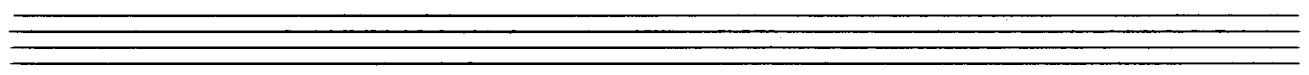
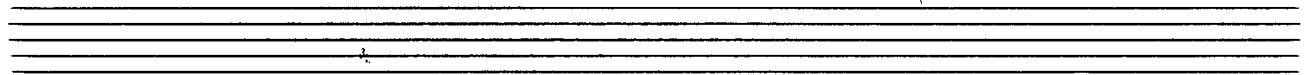
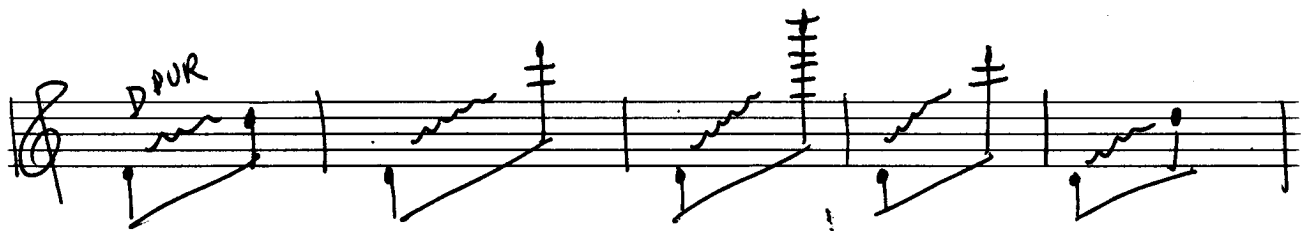
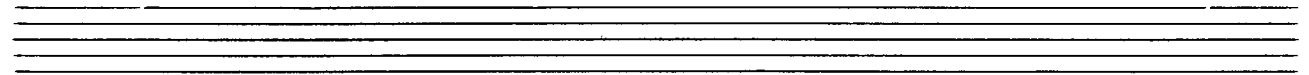
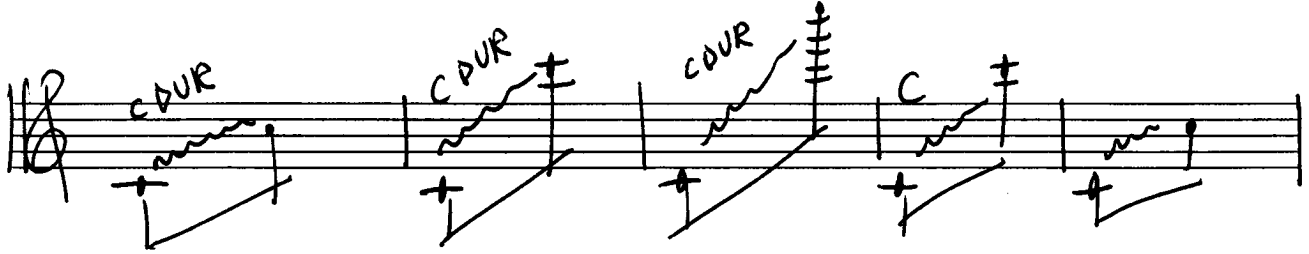
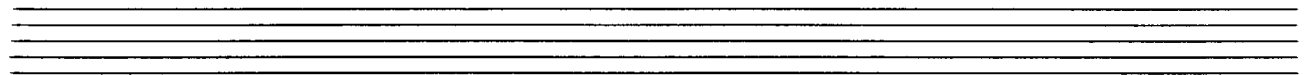
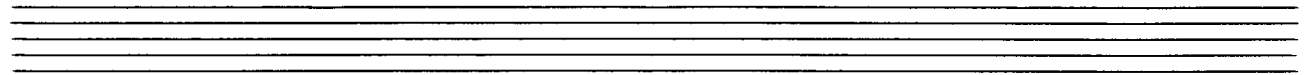
The image shows a handwritten musical score for flute, consisting of six staves. The notation is in treble clef and includes various notes, accidentals (sharps, flats, naturals), and slurs. The first staff begins with a treble clef and a key signature of one sharp (F#). The second staff continues the melody with a slur. The third staff shows a change in key signature to one flat (Bb). The fourth staff continues with a slur. The fifth staff shows a change in key signature to two flats (Bb, Eb). The sixth staff continues with a slur. The notation is dense and includes many accidentals, suggesting a complex or chromatic piece.











B DUR

Handwritten musical notation for the first line of the B major scale, starting with a treble clef and a key signature of one sharp (F#). The scale is written in a single line with a wavy line above it. The notes are B, C#, D, E, F#, G#, and A. The first measure is labeled "B DUR" and has a flat sign (b) above it.

C DUR

C# DUR

Handwritten musical notation for the second line, showing the C major and C# major scales. The C major scale is written in a single line with a wavy line above it. The notes are C, D, E, F, G, A, and B. The C# major scale is written in a single line with a wavy line above it. The notes are C#, D#, E#, F#, G#, and A#. The first measure of the C major scale is labeled "C DUR" and the first measure of the C# major scale is labeled "C# DUR".

E DUR

E MIN

Handwritten musical notation for the third line, showing the E major and E minor scales. The E major scale is written in a single line with a wavy line above it. The notes are E, F#, G#, A, B, C#, and D#. The E minor scale is written in a single line with a wavy line above it. The notes are E, F, G, A, B, C, and D. The first measure of the E major scale is labeled "E DUR" and the first measure of the E minor scale is labeled "E MIN".

F DUR

F# DUR

Handwritten musical notation for the fourth line, showing the F major and F# major scales. The F major scale is written in a single line with a wavy line above it. The notes are F, G, A, Bb, C, D, and Eb. The F# major scale is written in a single line with a wavy line above it. The notes are F#, G#, A, B, C#, D#, and E#. The first measure of the F major scale is labeled "F DUR" and the first measure of the F# major scale is labeled "F# DUR".

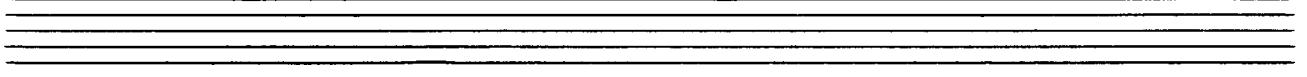
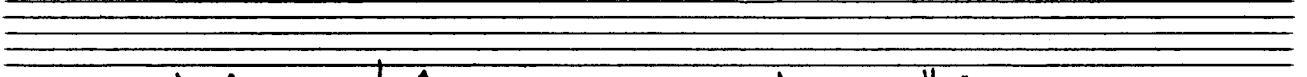
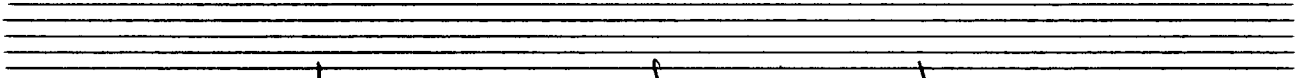
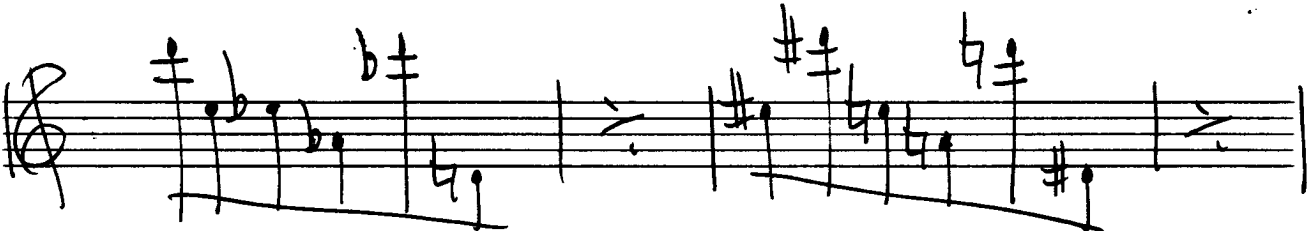
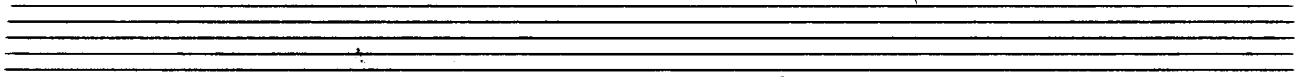
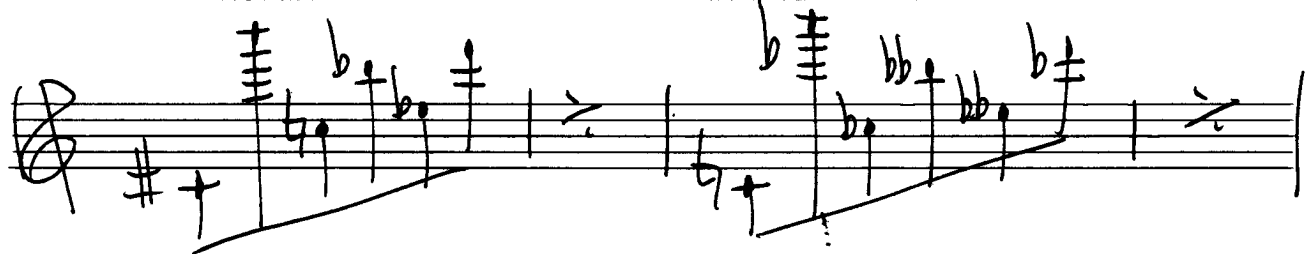
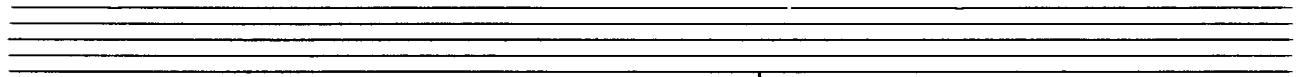
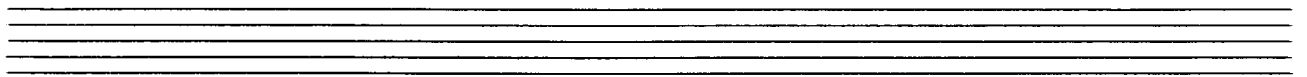
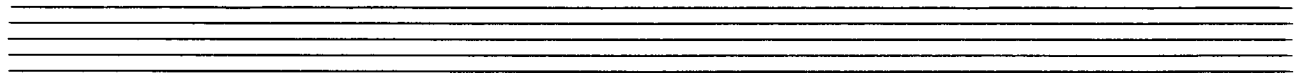
G DUR

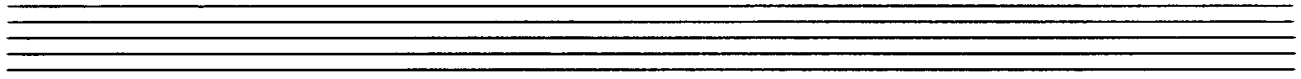
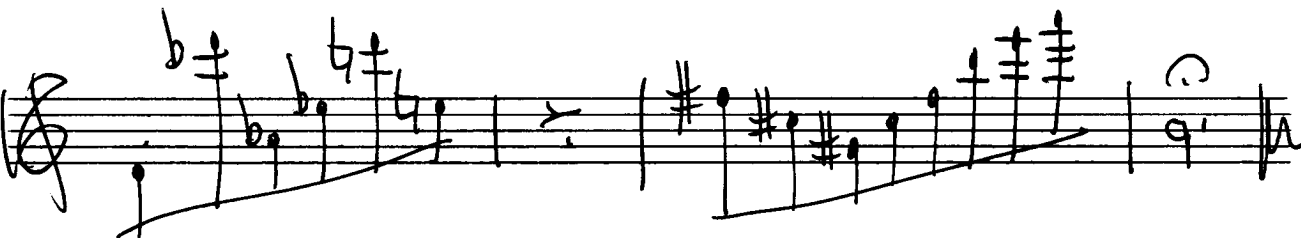
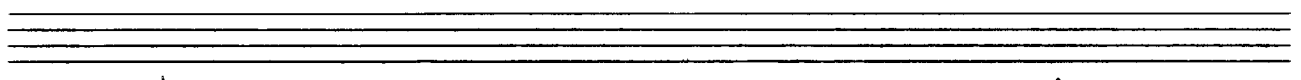
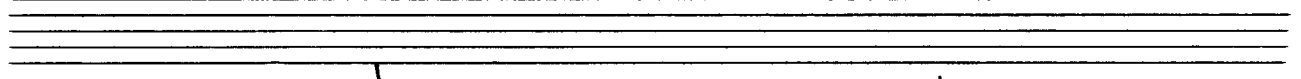
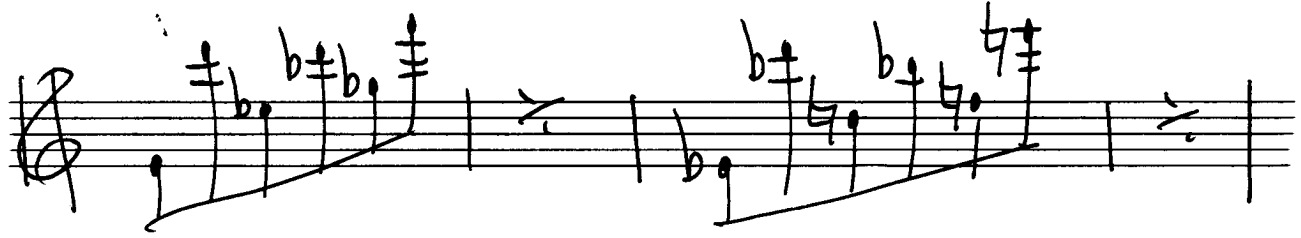
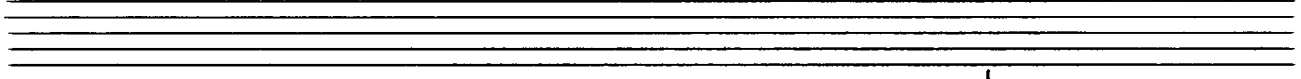
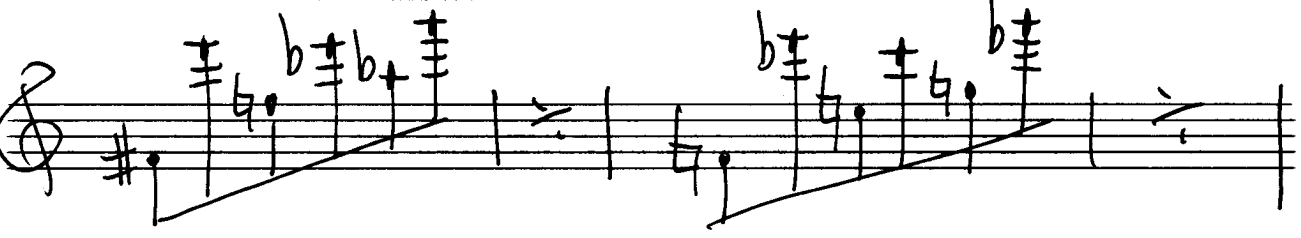
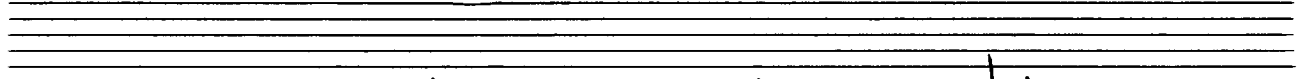
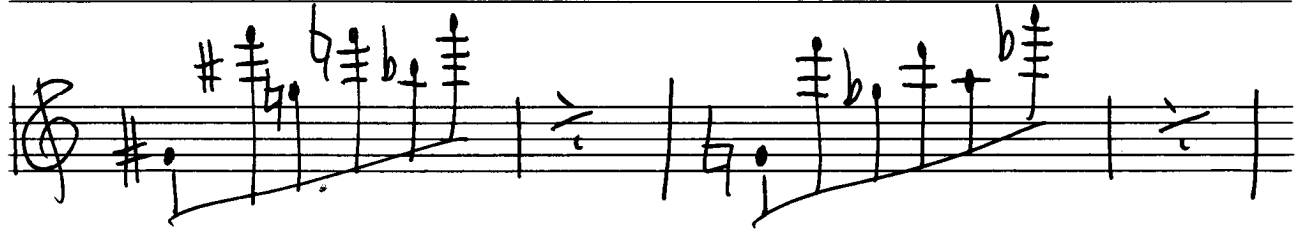
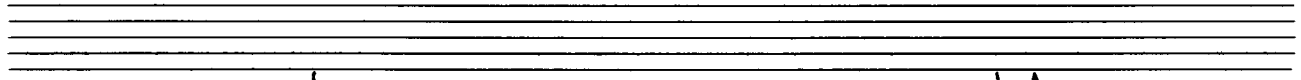
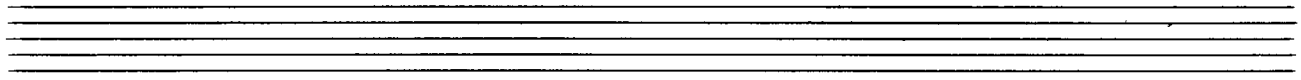
G# DUR

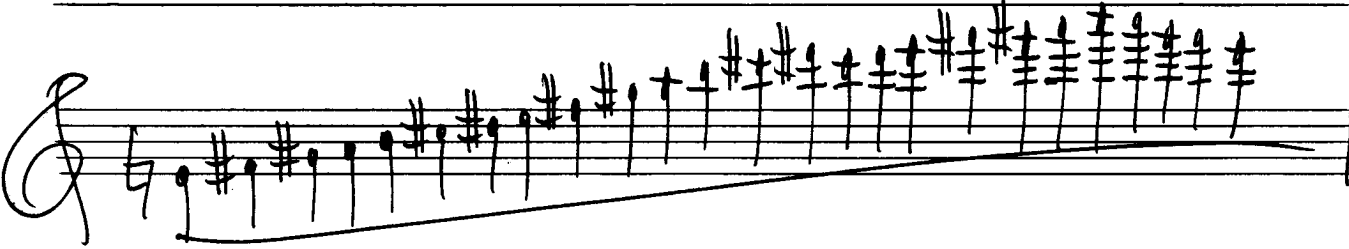
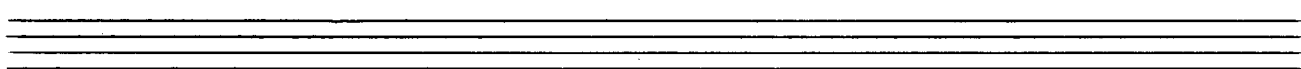
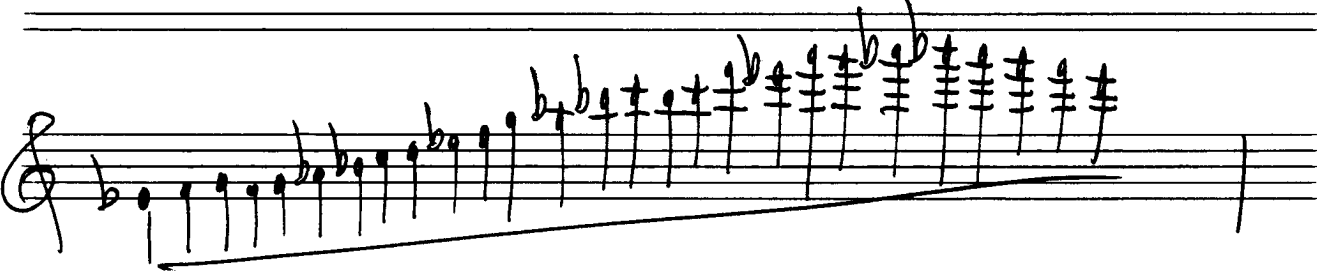
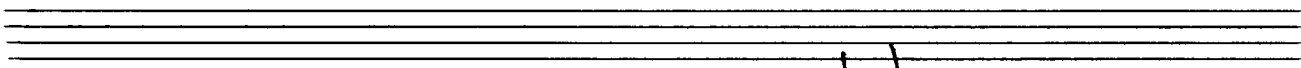
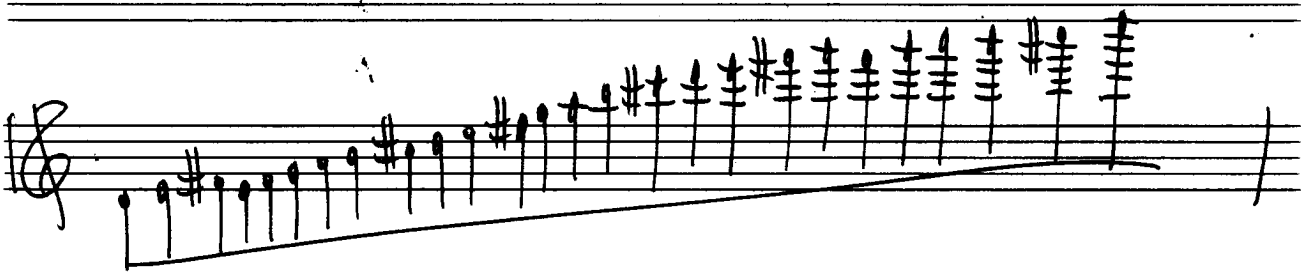
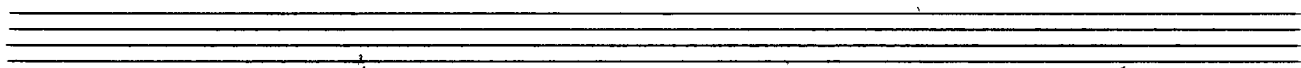
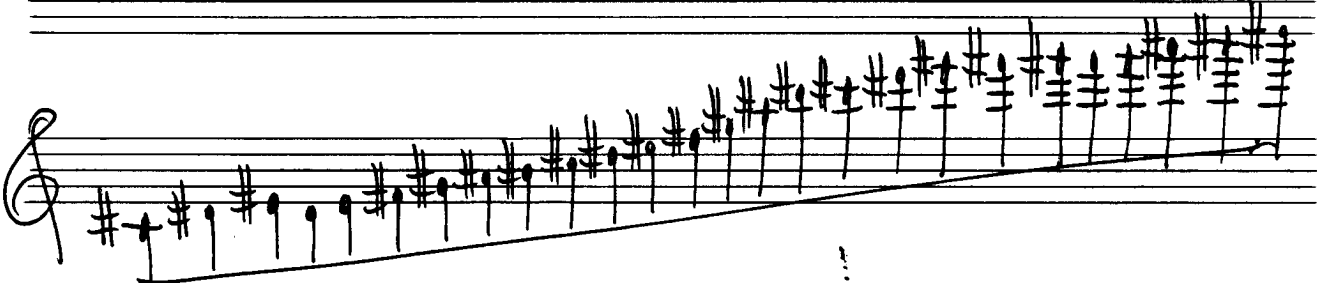
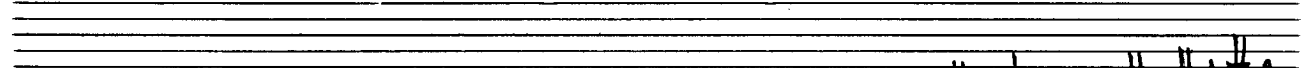
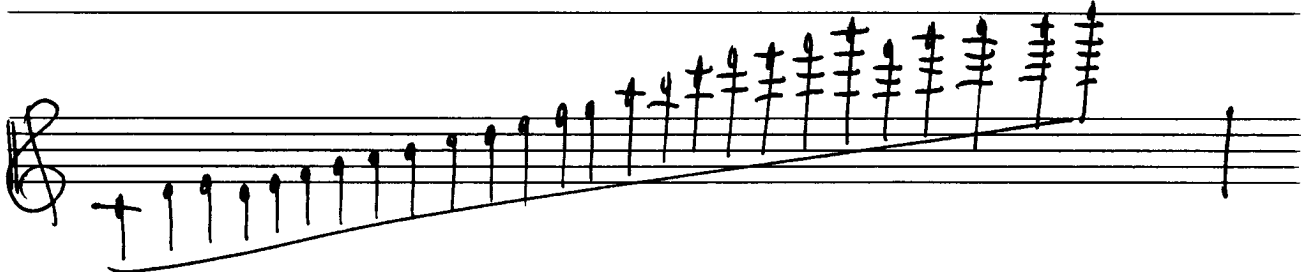
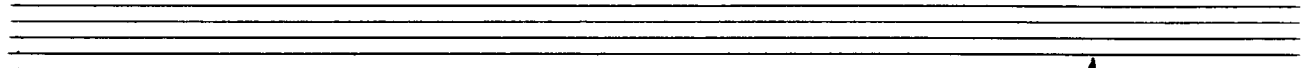
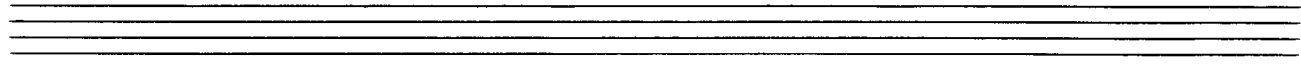
Handwritten musical notation for the fifth line, showing the G major and G# major scales. The G major scale is written in a single line with a wavy line above it. The notes are G, A, B, C, D, E, and F#. The G# major scale is written in a single line with a wavy line above it. The notes are G#, A#, B, C#, D#, and E#. The first measure of the G major scale is labeled "G DUR" and the first measure of the G# major scale is labeled "G# DUR".

A DUR

Handwritten musical notation for the sixth line, showing the A major scale. The scale is written in a single line with a wavy line above it. The notes are A, B, C, D, E, F#, and G#. The first measure is labeled "A DUR".







Handwritten musical notation on a single staff. The notation begins with a treble clef and a key signature of one flat (B-flat). The melody consists of a series of eighth notes, some with accidentals (sharps and flats), and concludes with a series of chords. The staff is part of a system of three staves.

Handwritten musical notation on a single staff. The notation begins with a treble clef and a key signature of one sharp (F-sharp). The melody consists of a series of eighth notes, some with accidentals (sharps and flats), and concludes with a series of chords. The staff is part of a system of three staves.

Handwritten musical notation on a single staff. The notation begins with a treble clef and a key signature of one sharp (F-sharp). The melody consists of a series of eighth notes, some with accidentals (sharps and flats), and concludes with a series of chords. The staff is part of a system of three staves.

Handwritten musical notation on a single staff. The notation begins with a treble clef and a key signature of two flats (B-flat and E-flat). The melody consists of a series of eighth notes, some with accidentals (sharps and flats), and concludes with a series of chords. The staff is part of a system of three staves.

Handwritten musical notation on a single staff. The notation begins with a treble clef and a key signature of one sharp (F-sharp). The melody consists of a series of eighth notes, some with accidentals (sharps and flats), and concludes with a series of chords. The staff is part of a system of three staves.

Handwritten musical notation on a single staff. The notation begins with a treble clef and a key signature of one flat (B-flat). The melody consists of a series of eighth notes, some with accidentals (sharps and flats), and concludes with a series of chords. The staff is part of a system of three staves.

