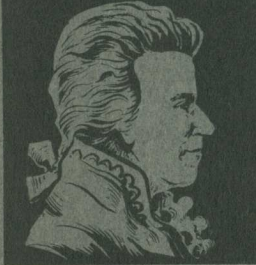


L.v. BEETHOVEN



W.A. MOZART



# NOTENHEFT

---

F. SCHUBERT



J. HAYDN



J. STRAUSS



Nr. 408

# Studien für Flöte

1961 Adolf Scherbaum

Die Etuden können (langsam) sehr rasch)

staccato — legato —

teilweise gebunden —

„ gestoßen —

( gespielt werden. ) —

( auch transponiert (kleine Sek.)

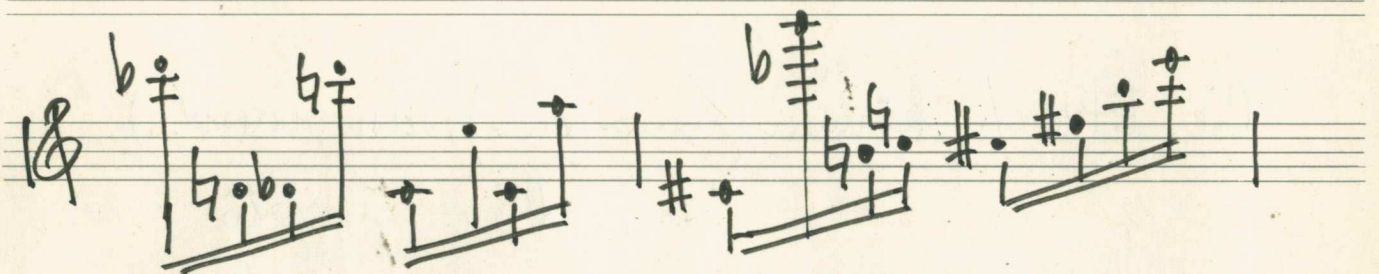
große „

Terz

Quint  
Quart )

( Atemzeichen dem Spieler  
überlassen )

1.





2.

*senza legato*

Handwritten musical notation on a five-line staff. The time signature is 2/4. The first measure contains a quarter note with a sharp sign, followed by a triplet of eighth notes with flats and a sharp. The second measure contains a quarter note with a sharp, followed by a quarter note with a sharp and a quarter note with a sharp. The third measure contains a quarter note with a flat and a quarter note with a sharp. The fourth measure contains a quarter note with a flat and a quarter note with a sharp. The fifth measure contains a quarter note with a flat and a quarter note with a sharp. The sixth measure contains a quarter note with a flat and a quarter note with a sharp. The seventh measure contains a quarter note with a flat and a quarter note with a sharp. The eighth measure contains a quarter note with a flat and a quarter note with a sharp. The piece ends with a double bar line.

Handwritten musical notation on a five-line staff. The first measure contains a quarter note with a sharp, followed by a quarter note with a sharp and a quarter note with a sharp. The second measure contains a quarter note with a sharp, followed by a quarter note with a sharp and a quarter note with a sharp. The third measure contains a quarter note with a flat, followed by a quarter note with a flat and a quarter note with a flat. The fourth measure contains a quarter note with a sharp, followed by a quarter note with a sharp and a quarter note with a sharp. The piece ends with a double bar line.

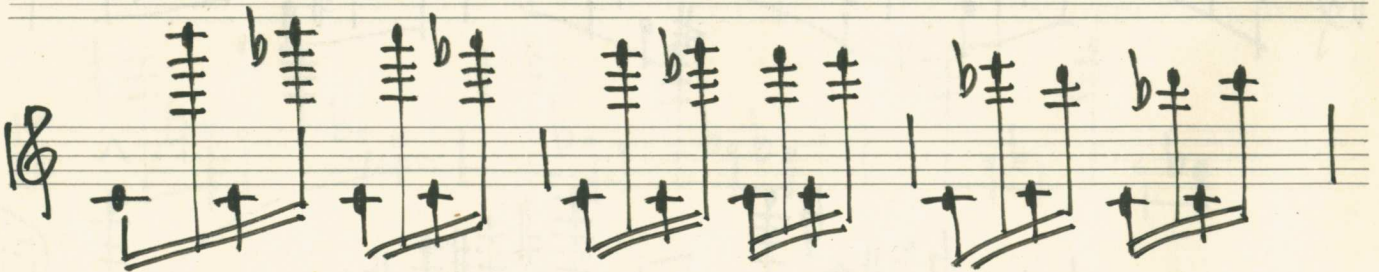
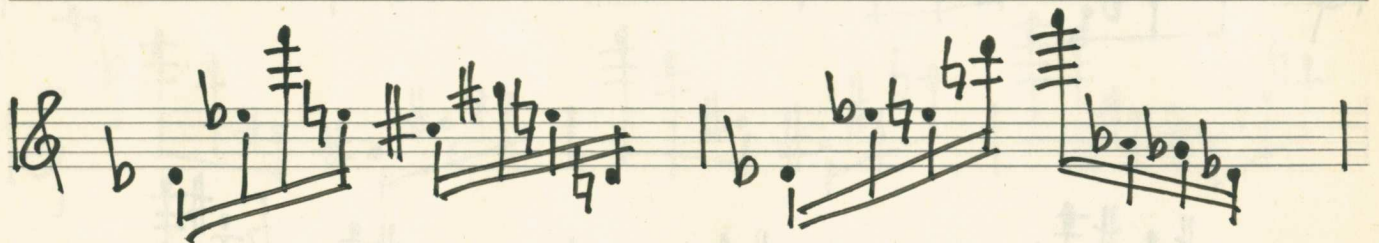
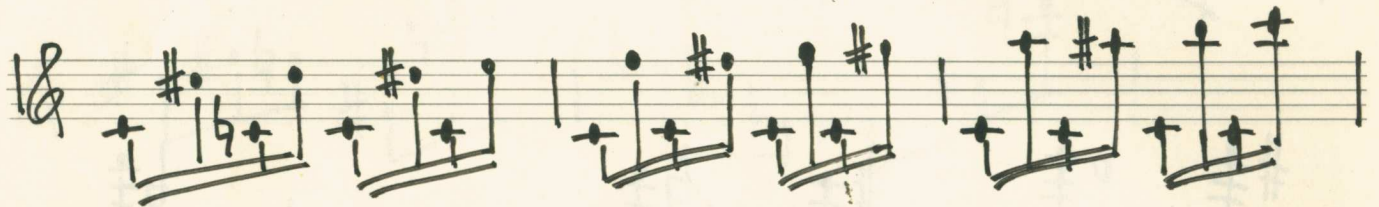
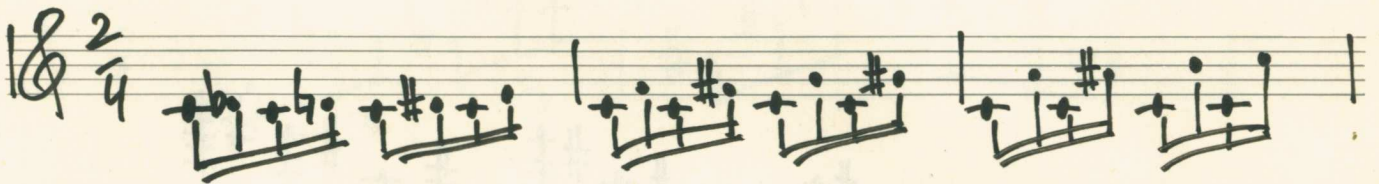
Handwritten musical notation on a five-line staff. The first measure contains a quarter note with a sharp, followed by a quarter note with a sharp and a quarter note with a sharp. The second measure contains a quarter note with a sharp, followed by a quarter note with a sharp and a quarter note with a sharp. The third measure contains a quarter note with a sharp, followed by a quarter note with a sharp and a quarter note with a sharp. The fourth measure contains a quarter note with a flat, followed by a quarter note with a flat and a quarter note with a flat. The fifth measure contains a quarter note with a flat, followed by a quarter note with a flat and a quarter note with a flat. The sixth measure contains a quarter note with a flat, followed by a quarter note with a flat and a quarter note with a flat. The piece ends with a double bar line.

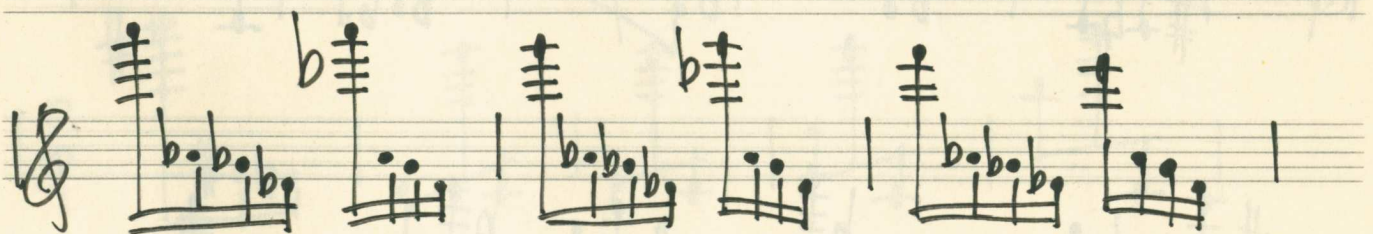
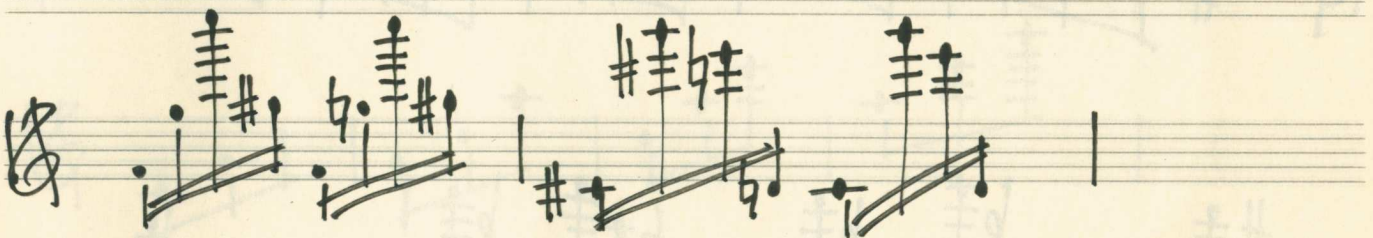
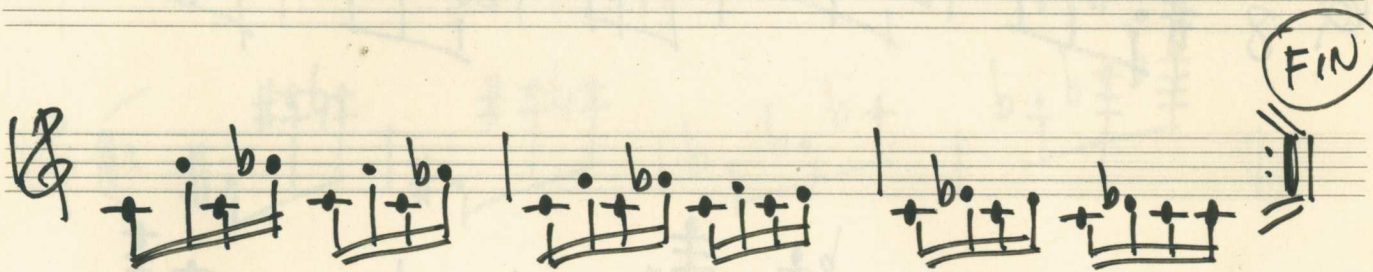
Handwritten musical notation on a five-line staff. The first measure contains a quarter note with a flat, followed by a quarter note with a sharp and a quarter note with a sharp. The second measure contains a quarter note with a sharp, followed by a quarter note with a sharp and a quarter note with a sharp. The third measure contains a quarter note with a sharp, followed by a quarter note with a sharp and a quarter note with a sharp. The fourth measure contains a quarter note with a sharp, followed by a quarter note with a sharp and a quarter note with a sharp. The fifth measure contains a quarter note with a sharp, followed by a quarter note with a sharp and a quarter note with a sharp. The sixth measure contains a quarter note with a sharp, followed by a quarter note with a sharp and a quarter note with a sharp. The piece ends with a double bar line.

Handwritten musical notation on a five-line staff. The first measure contains a quarter note with a sharp, followed by a quarter note with a sharp and a quarter note with a sharp. The second measure contains a quarter note with a sharp, followed by a quarter note with a sharp and a quarter note with a sharp. The third measure contains a quarter note with a sharp, followed by a quarter note with a sharp and a quarter note with a sharp. The fourth measure contains a quarter note with a sharp, followed by a quarter note with a sharp and a quarter note with a sharp. The fifth measure contains a quarter note with a sharp, followed by a quarter note with a sharp and a quarter note with a sharp. The sixth measure contains a quarter note with a sharp, followed by a quarter note with a sharp and a quarter note with a sharp. The piece ends with a double bar line.



3.

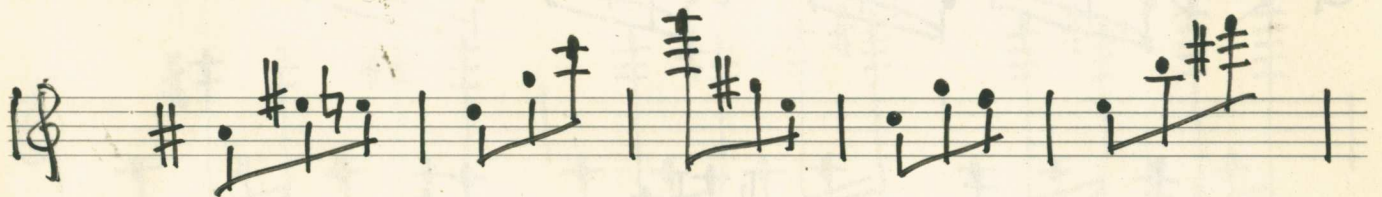






4

*Empire stacc.*



Handwritten musical notation on a single staff, starting with a treble clef and a key signature of one sharp (F#). The notation consists of five measures of music, ending with a double bar line and a circled "FIN".

Handwritten musical notation on a single staff, starting with a treble clef and a key signature of one sharp (F#). The notation consists of four measures of music, ending with a double bar line.

Handwritten musical notation on a single staff, starting with a treble clef and a key signature of one flat (Bb). The notation consists of four measures of music, ending with a double bar line.

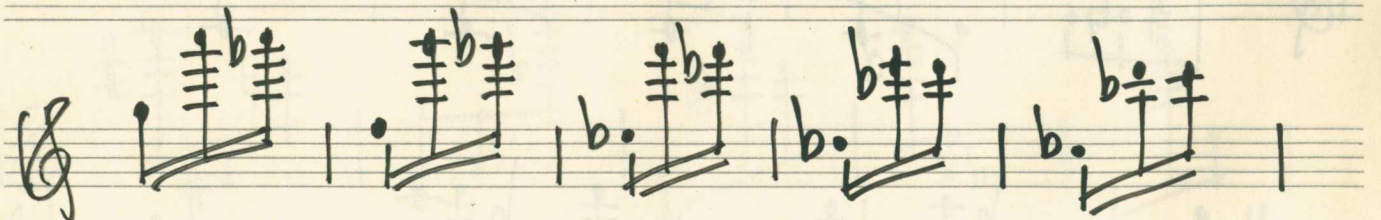
Handwritten musical notation on a single staff, starting with a treble clef and a key signature of one sharp (F#). The notation consists of four measures of music, ending with a double bar line.

Handwritten musical notation on a single staff, starting with a treble clef and a key signature of one sharp (F#). The notation consists of five measures of music, ending with a double bar line.

Handwritten musical notation on a single staff, starting with a treble clef and a key signature of one sharp (F#). The notation consists of five measures of music, ending with a double bar line, "D.C.", and a circled "Fin".

1+ leg.  
2+ stacc.  
3+ leg.

5.





6.

At leg  
2x stacc.

Handwritten musical notation on a single staff. It begins with a treble clef and a 4/16 time signature. The first measure contains a sharp sign followed by a dotted quarter note and an eighth note. The second measure contains a sharp sign, a dotted quarter note, and an eighth note. The third measure contains a dotted quarter note and an eighth note. The fourth measure contains a dotted quarter note and an eighth note. The piece ends with a bar line.


Handwritten musical notation on a single staff. It begins with a treble clef. The first measure contains a sharp sign, a dotted quarter note, and an eighth note. The second measure contains a dotted quarter note and an eighth note. The third measure contains a dotted quarter note and an eighth note. The fourth measure contains a dotted quarter note and an eighth note. The piece ends with a bar line.

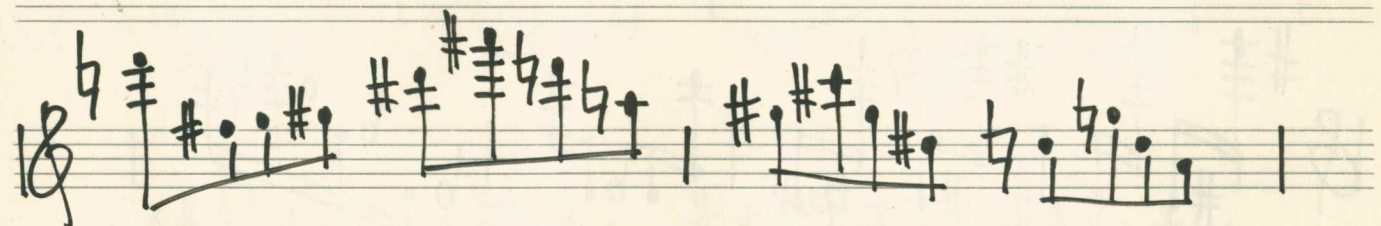
Handwritten musical notation on a single staff. It begins with a treble clef. The first measure contains a sharp sign, a dotted quarter note, and an eighth note. The second measure contains a sharp sign, a dotted quarter note, and an eighth note. The third measure contains a dotted quarter note and an eighth note. The fourth measure contains a dotted quarter note and an eighth note. The piece ends with a bar line.

Handwritten musical notation on a single staff. It begins with a treble clef. The first measure contains a sharp sign, a dotted quarter note, and an eighth note. The second measure contains a sharp sign, a dotted quarter note, and an eighth note. The third measure contains a dotted quarter note and an eighth note. The fourth measure contains a dotted quarter note and an eighth note. The piece ends with a bar line.

Handwritten musical notation on a single staff. It begins with a treble clef. The first measure contains a dotted quarter note and an eighth note. The second measure contains a dotted quarter note and an eighth note. The third measure contains a dotted quarter note and an eighth note. The fourth measure contains a dotted quarter note and an eighth note. The piece ends with a bar line.



leg. 



Handwritten musical notation on a five-line staff. It begins with a treble clef and a key signature of one sharp (F#). The notation consists of several measures of music with various notes, rests, and accidentals.

Handwritten musical notation on a five-line staff. It starts with a treble clef and a key signature of one sharp (F#). The notation shows a sequence of notes with various accidentals, including flats and naturals.

Handwritten musical notation on a five-line staff. It begins with a treble clef and a key signature of one flat (Bb). The notation includes various notes and accidentals.

Handwritten musical notation on a five-line staff. It starts with a treble clef and a key signature of one sharp (F#). The notation shows a sequence of notes with various accidentals.

Handwritten musical notation on a five-line staff. It begins with a treble clef and a key signature of one sharp (F#). The notation ends with a double bar line and a repeat sign. The number "3x" is written above the staff.

Handwritten musical notation on a five-line staff. It starts with a treble clef and a key signature of one sharp (F#). The notation concludes with a double bar line and a circled "FIN".

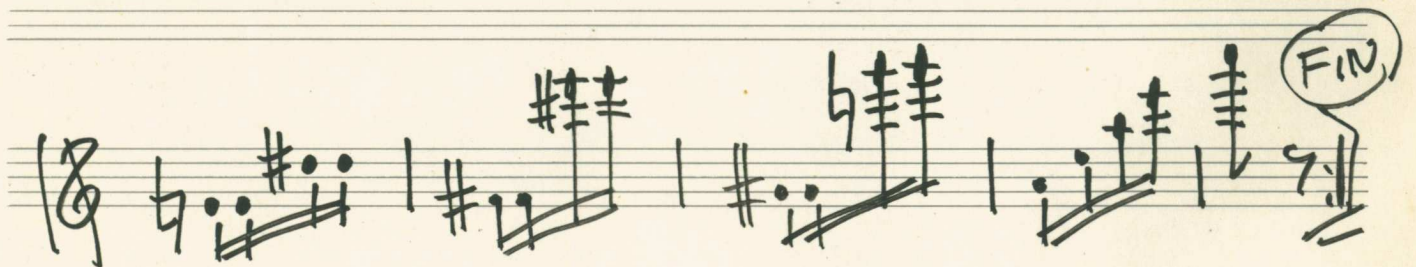
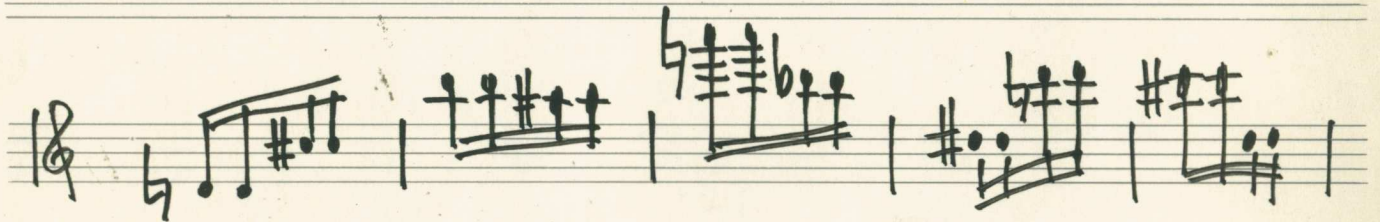
1967  
Adolf Scherbaum



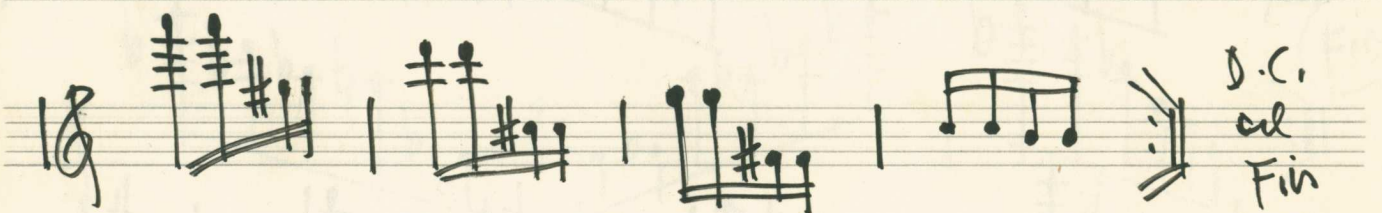
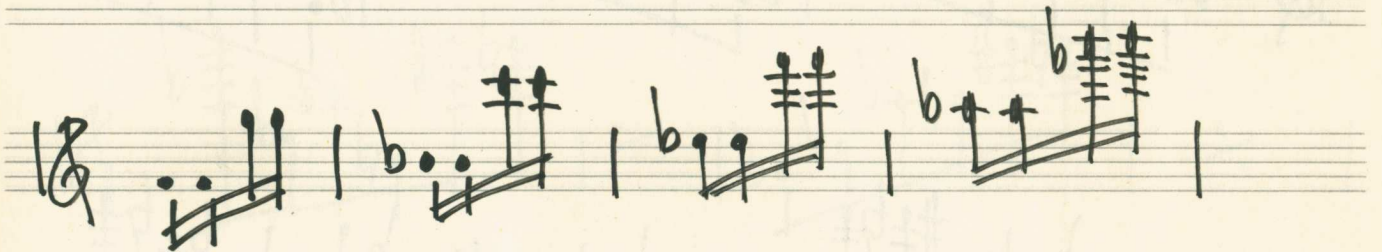
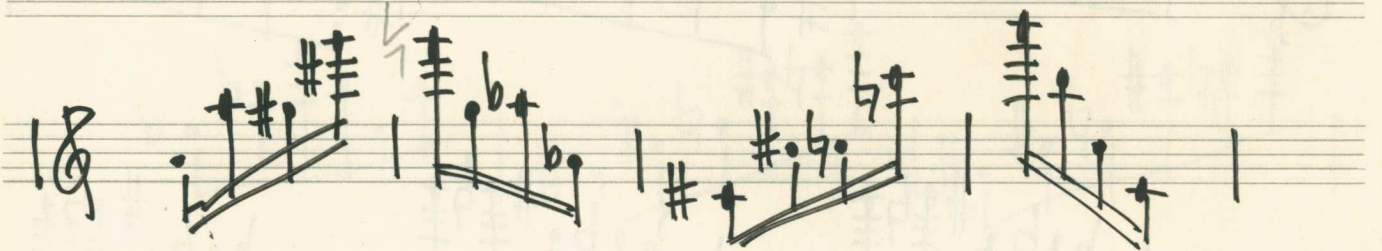
7 Studien für Flöte

Band. [2.]

1.

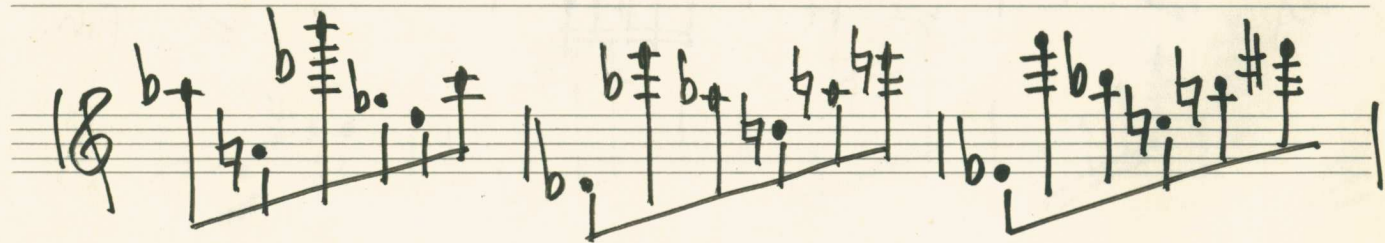
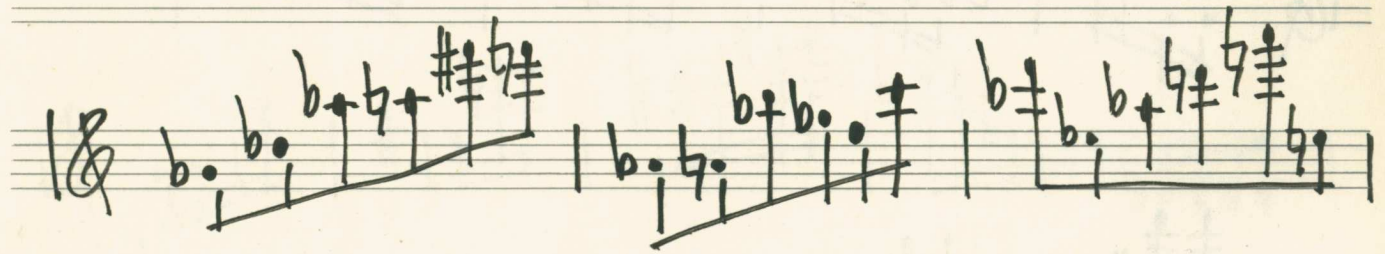
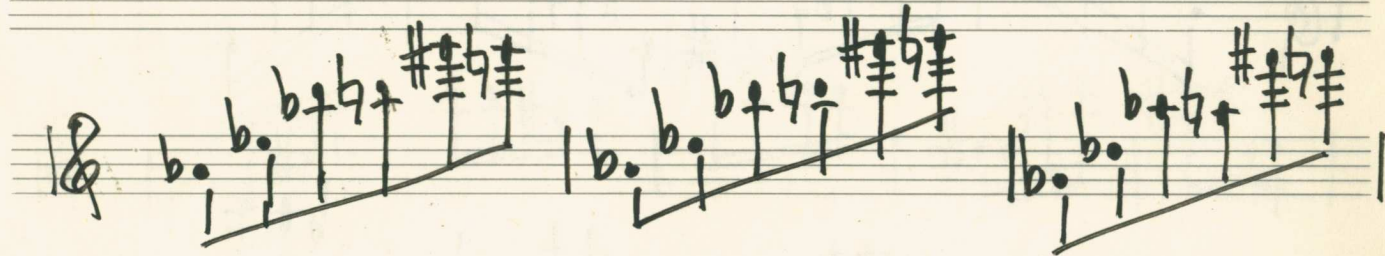
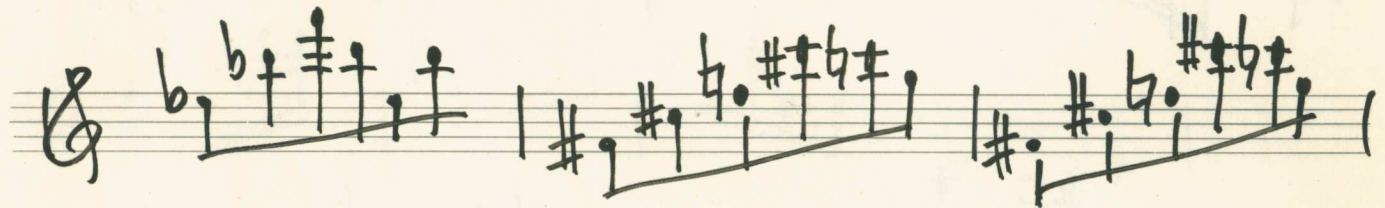
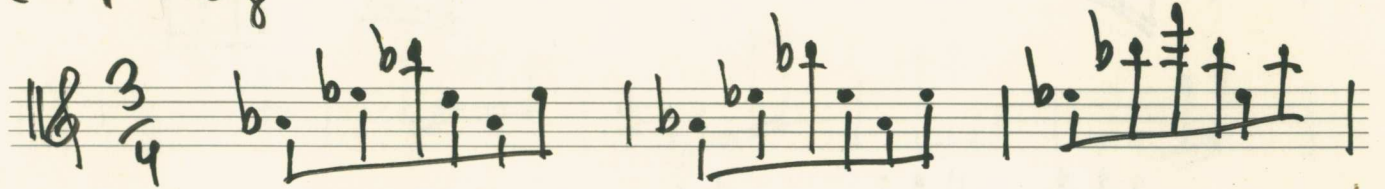


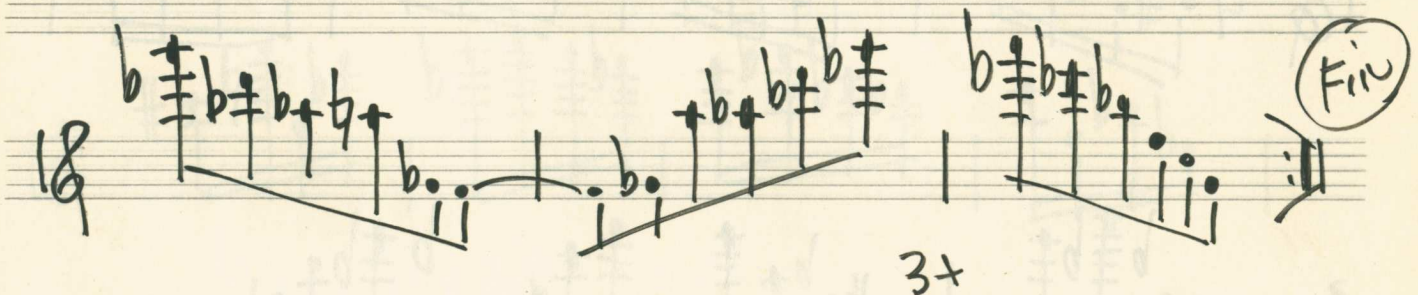
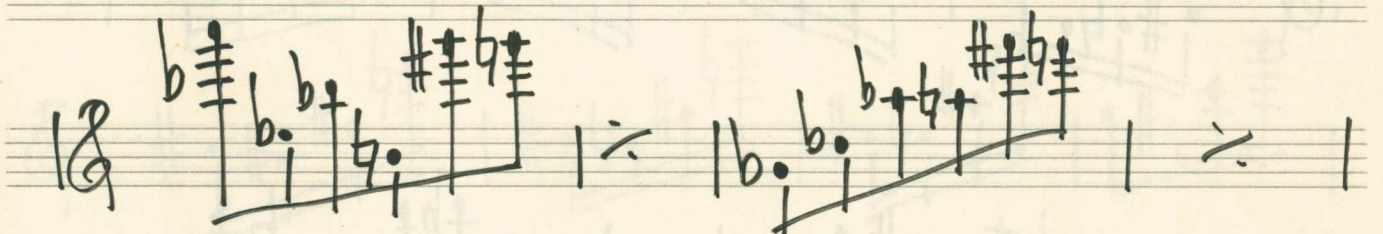
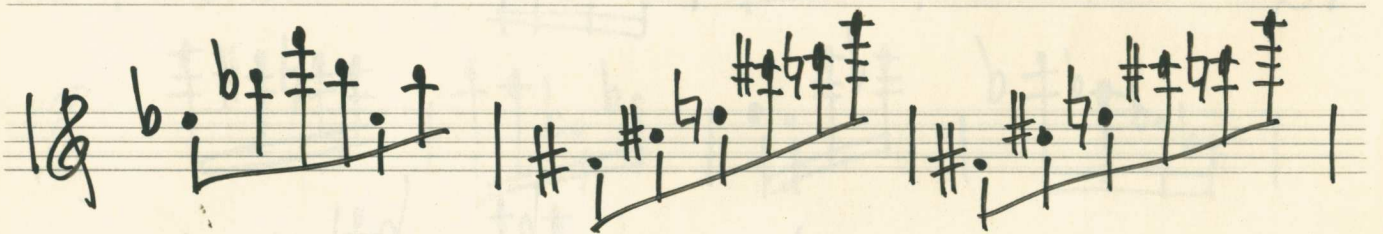
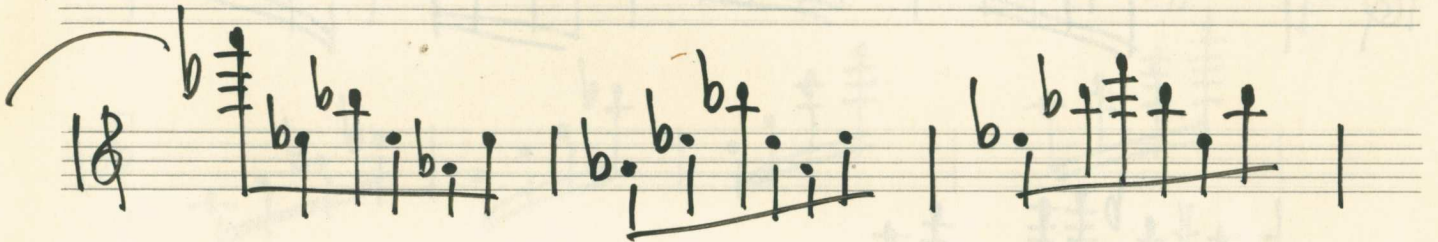
17



2.

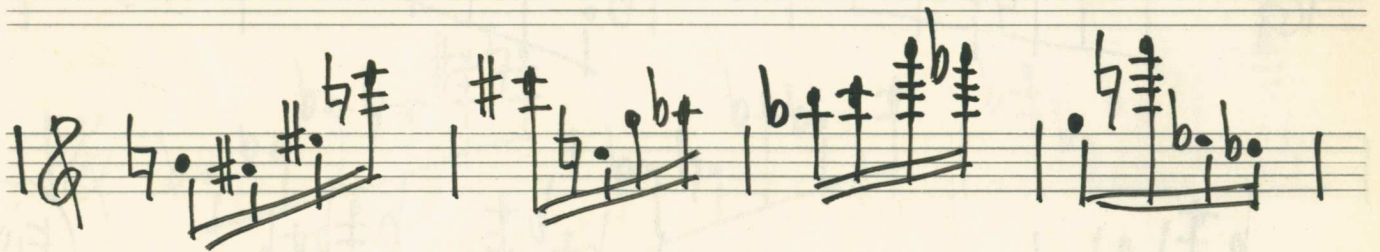
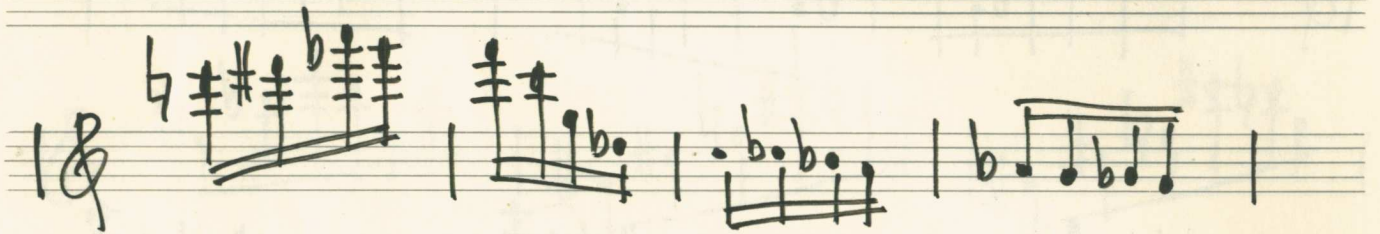
*Tempo leg.*

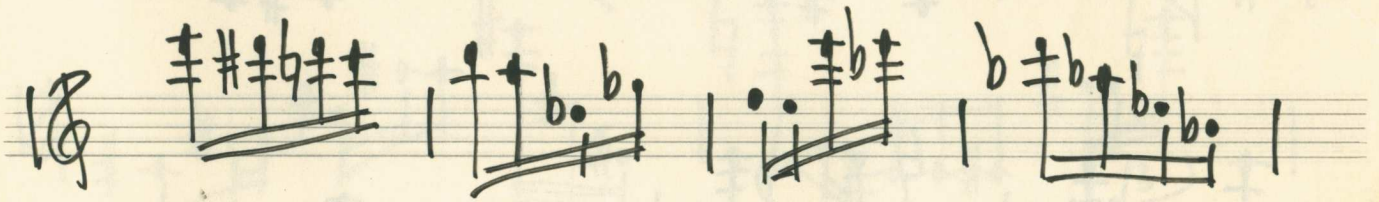
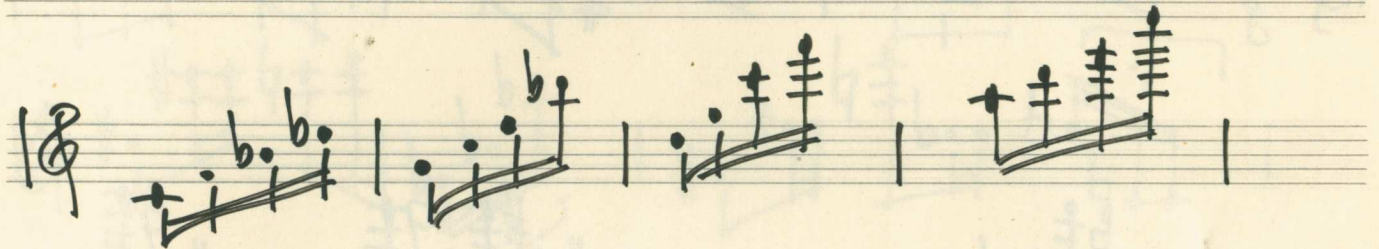
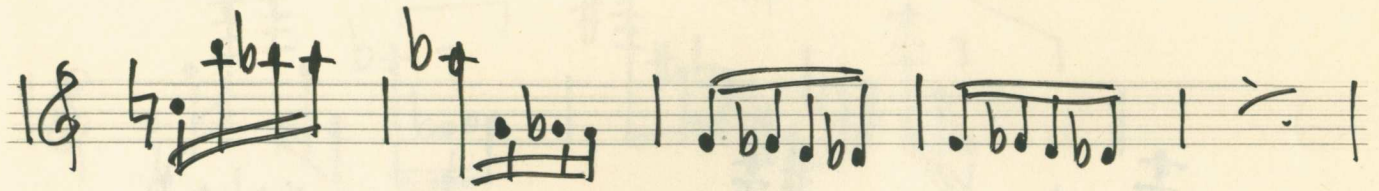




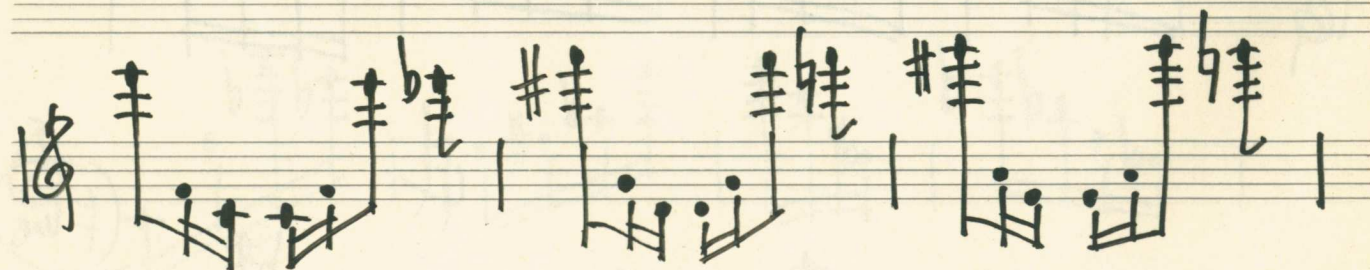
3.

stacc.





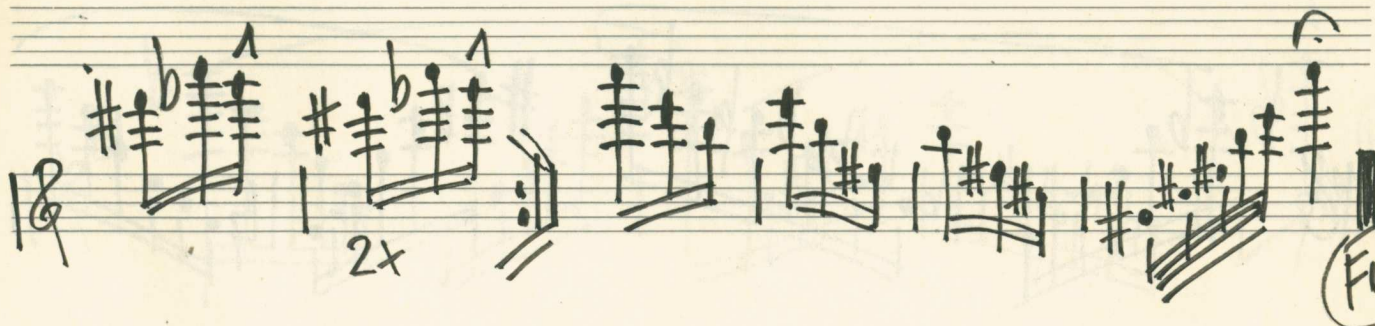
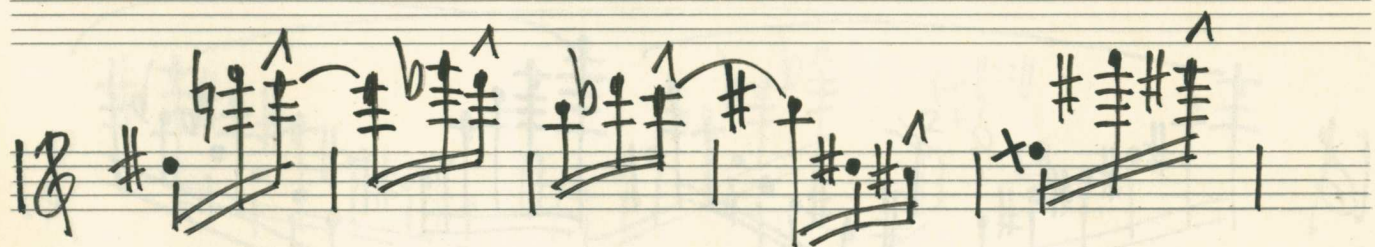
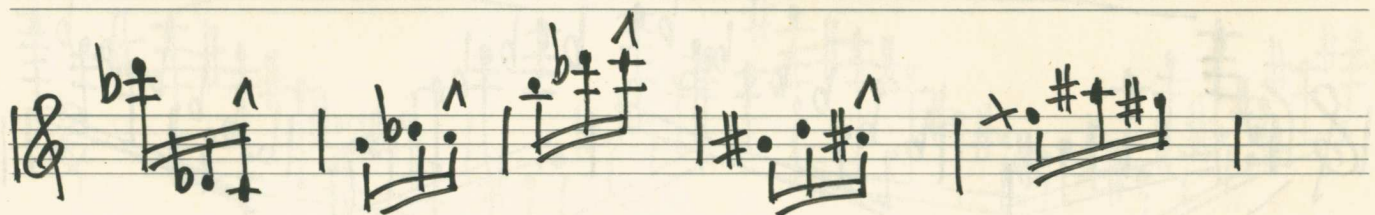
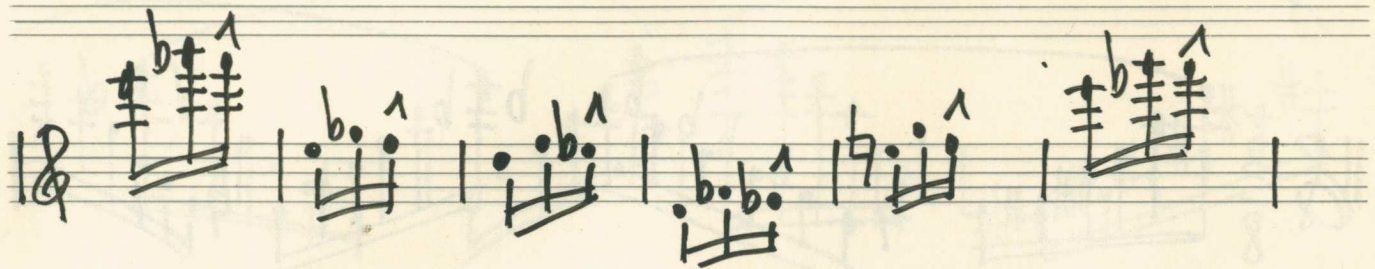
4.











6.



Acc. Prestissimo 7.

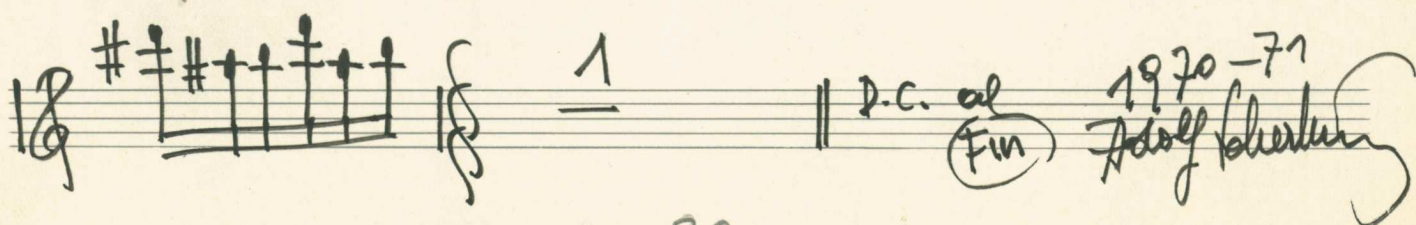
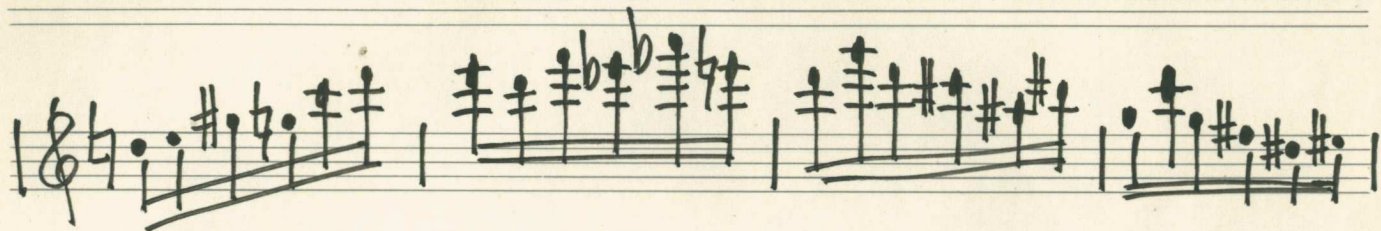
Handwritten musical notation on a five-line staff in treble clef, 3/8 time signature. It contains six measures of music with various accidentals and note values.

Handwritten musical notation on a five-line staff in treble clef, 3/8 time signature. It contains five measures of music, ending with a double bar line and a box containing the word "FIN".

Handwritten musical notation on a five-line staff in treble clef, 3/8 time signature. It contains four measures of music with various accidentals and note values.

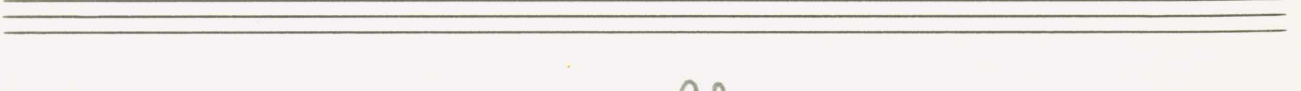
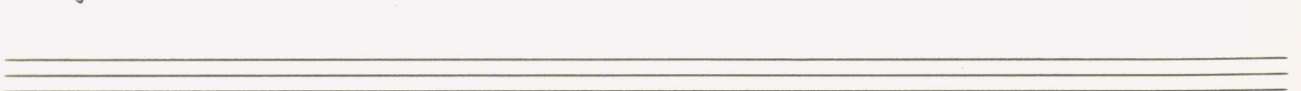
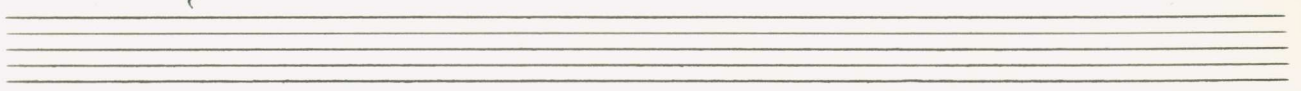
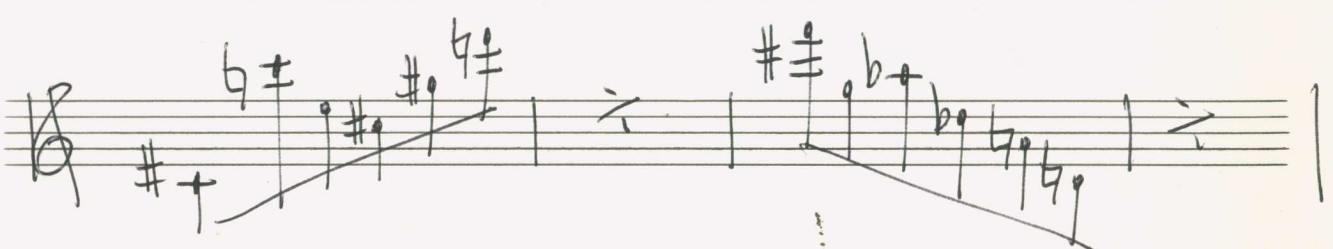
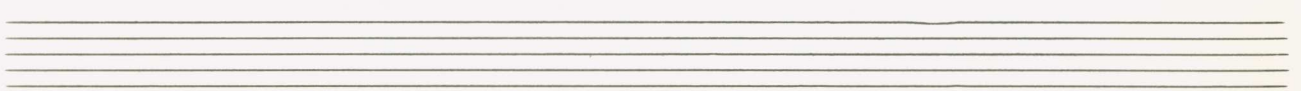
Handwritten musical notation on a five-line staff in treble clef, 3/8 time signature. It contains four measures of music with various accidentals and note values.

Handwritten musical notation on a five-line staff in treble clef, 3/8 time signature. It contains three measures of music with various accidentals and note values.

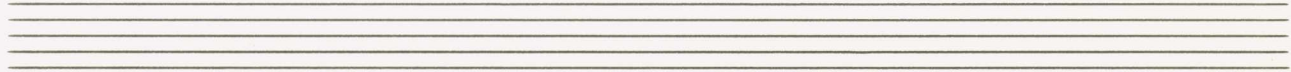
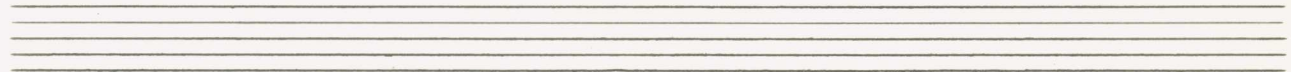
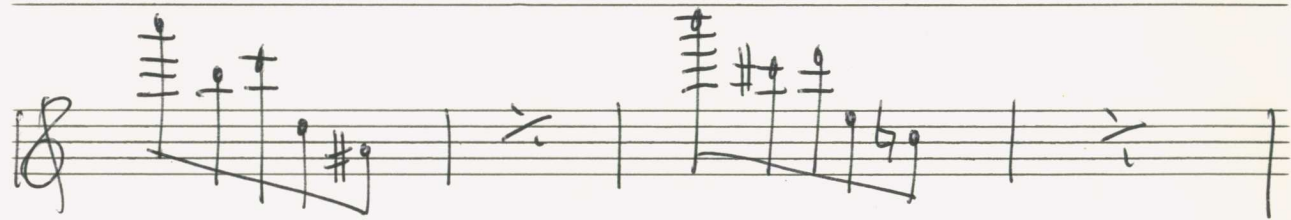
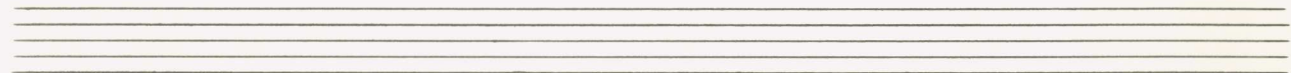
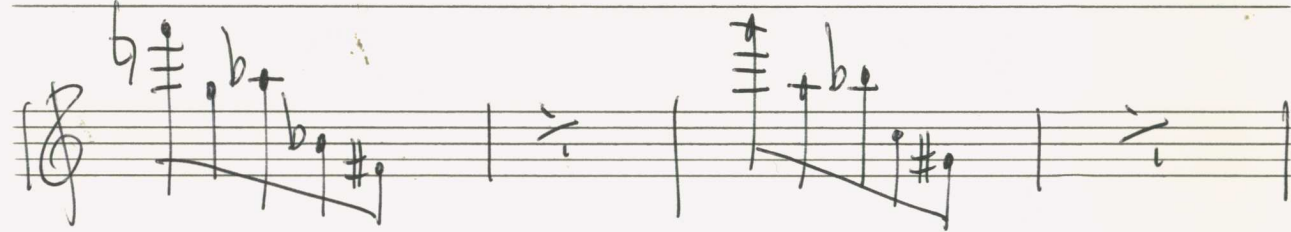
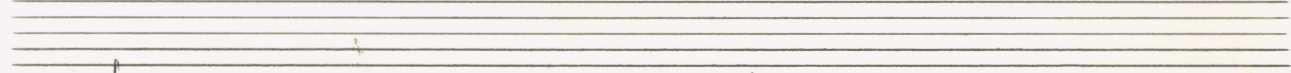
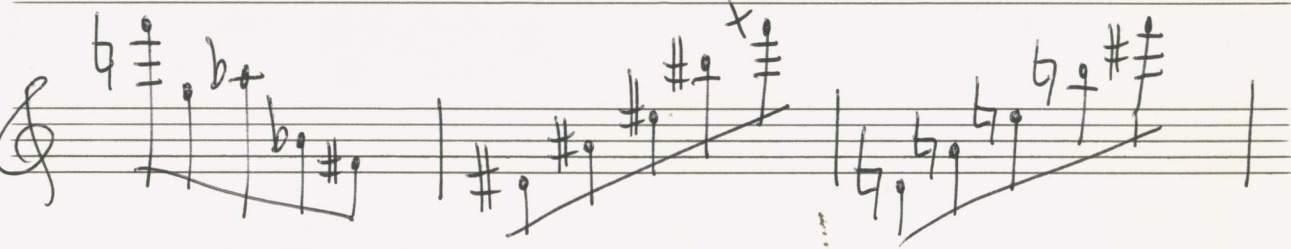
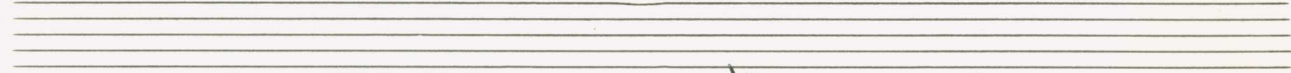
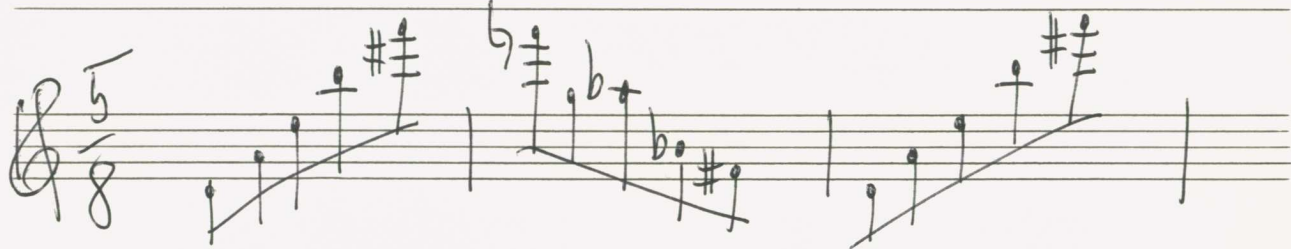
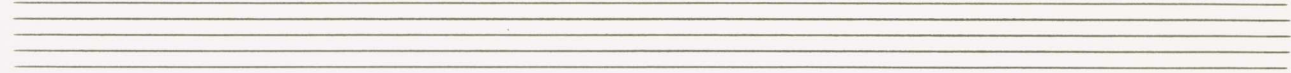


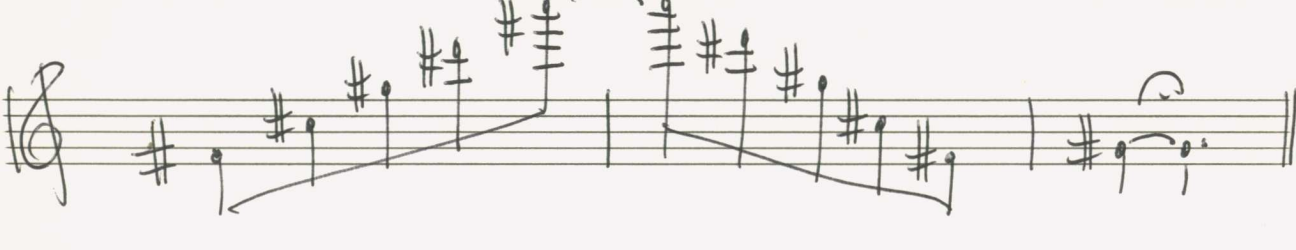
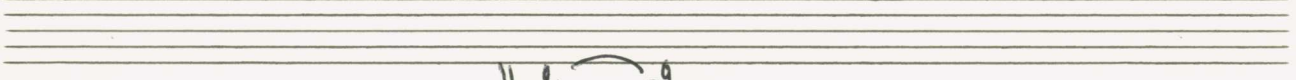
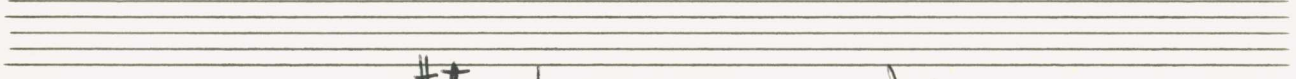
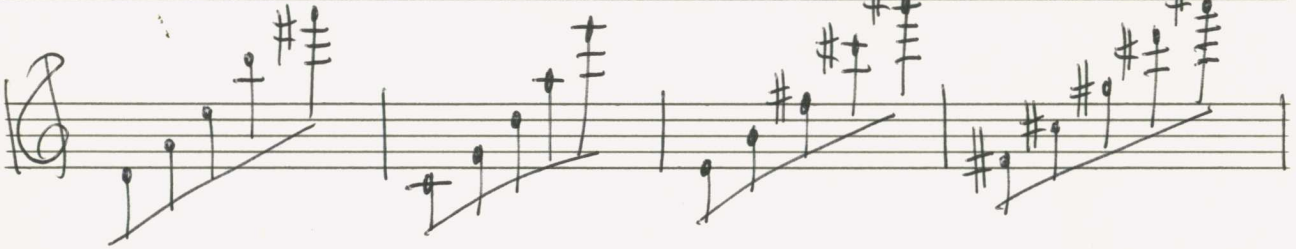
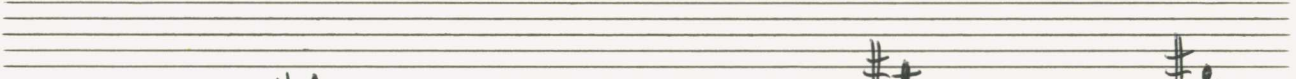
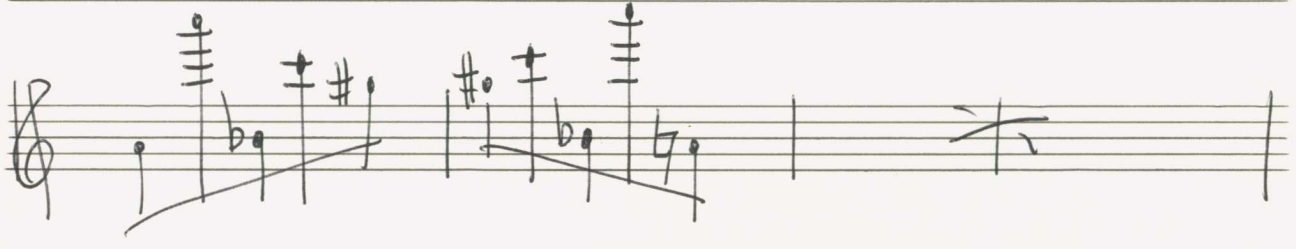
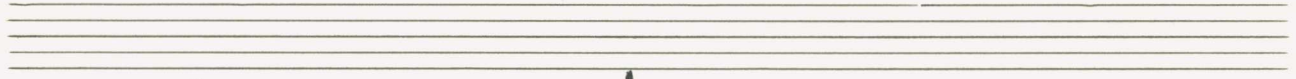
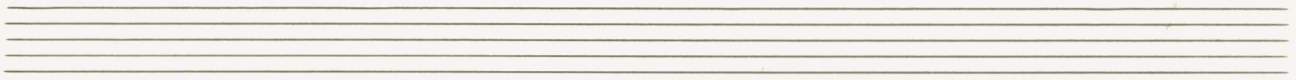
(Studien f. Flöte, Bd. 3)

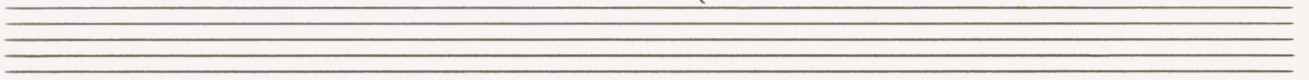
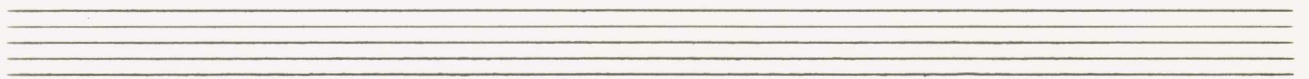
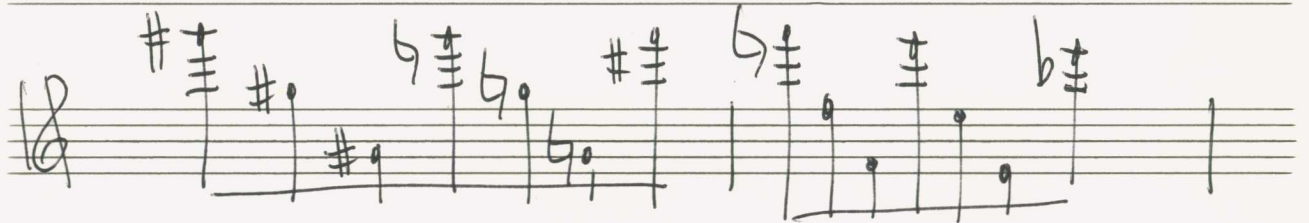
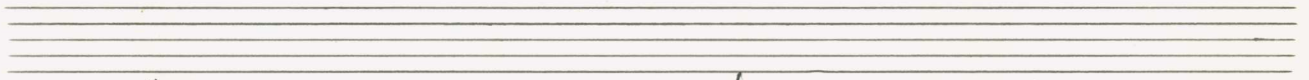
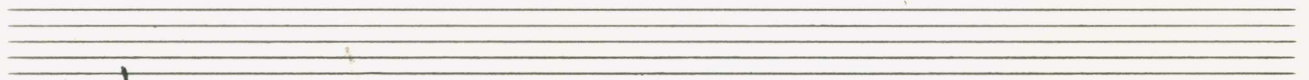
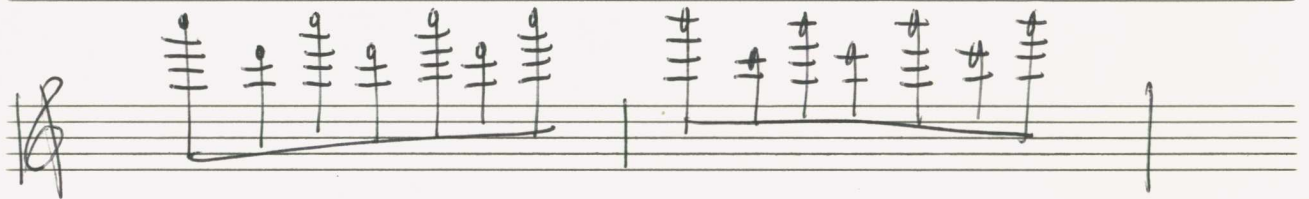
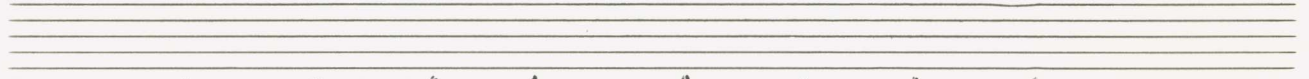
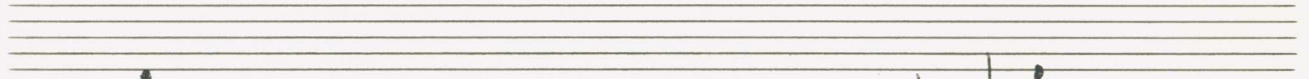
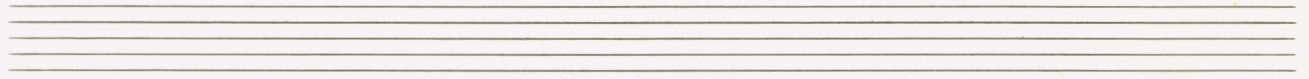


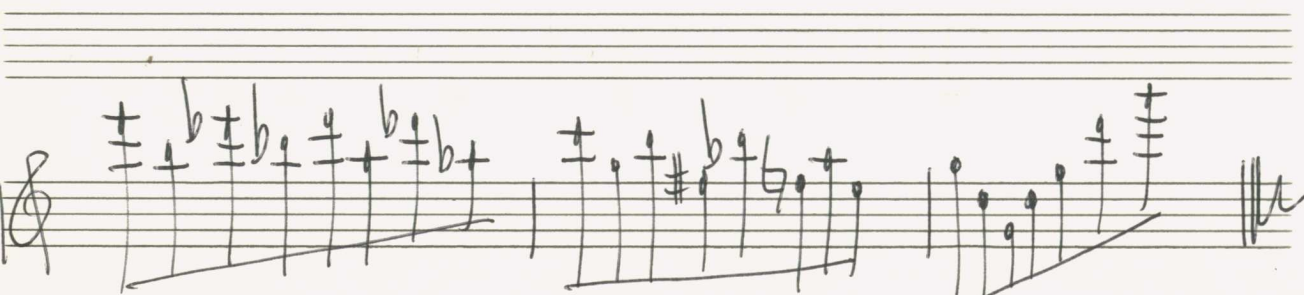
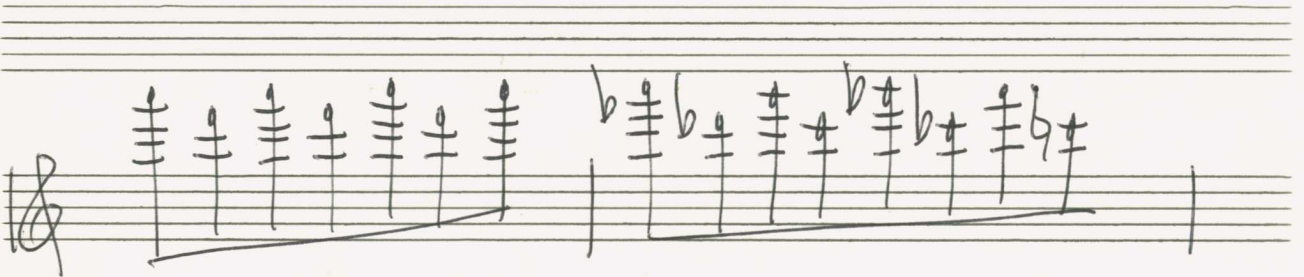
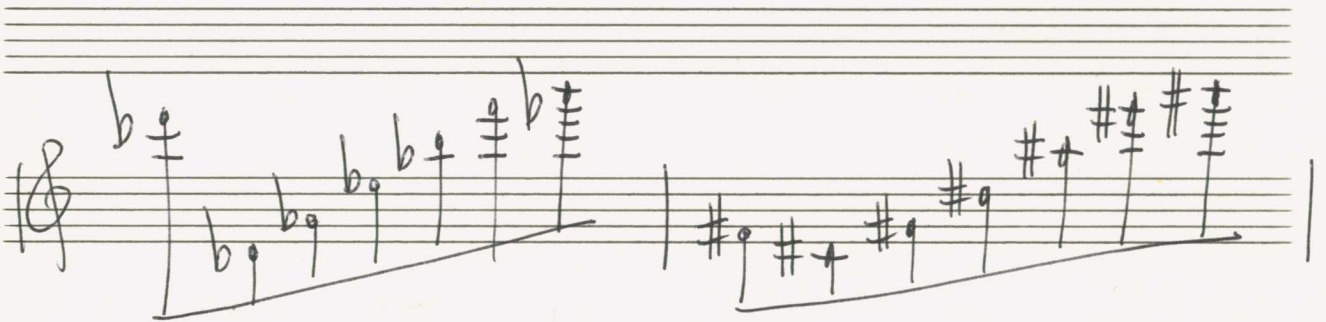
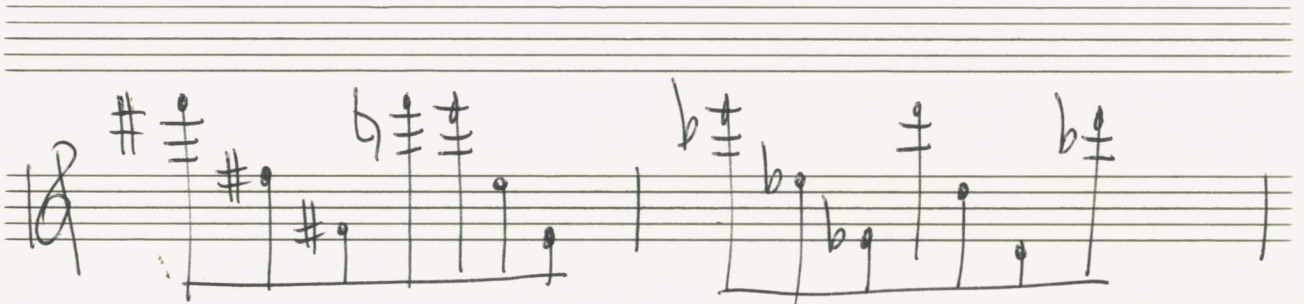
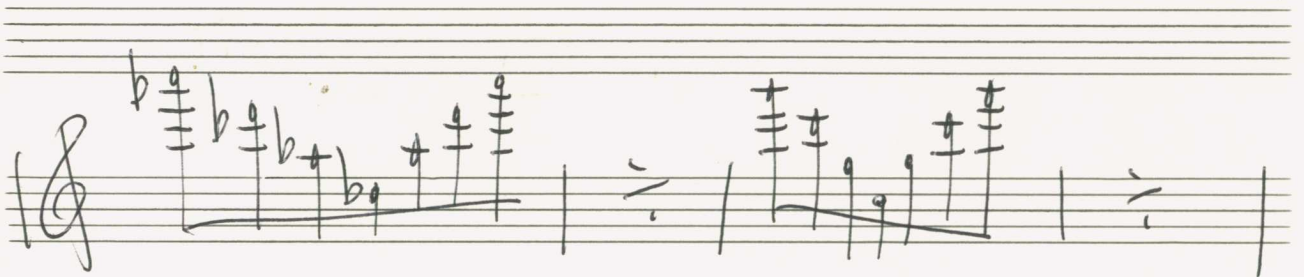


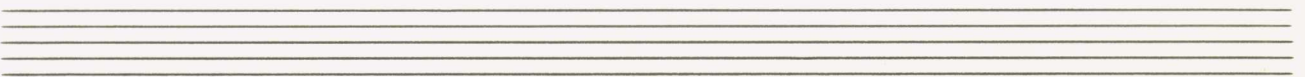
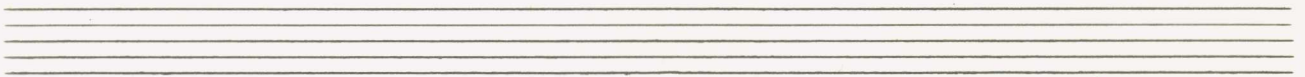
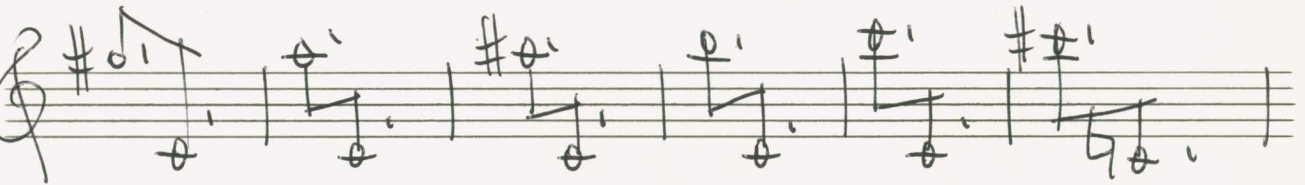
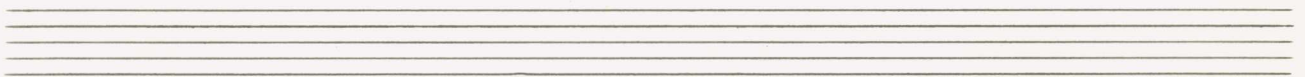
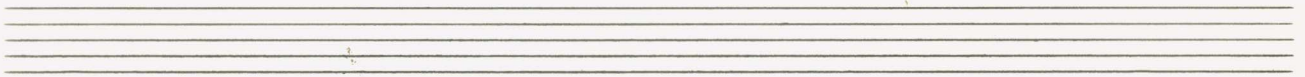
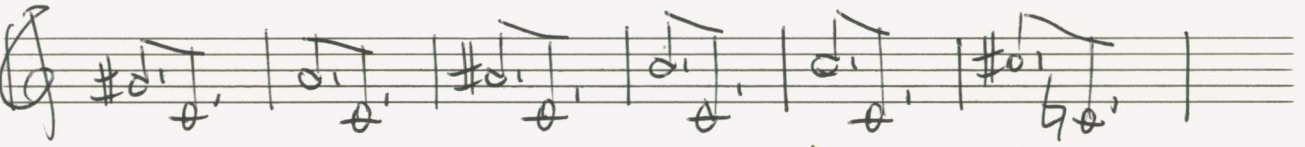
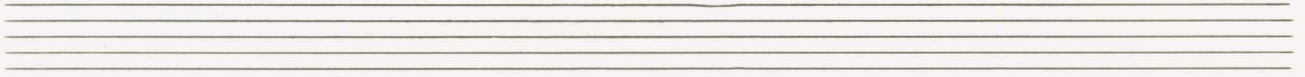
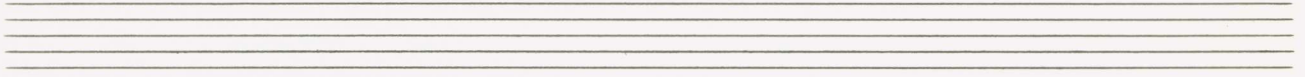
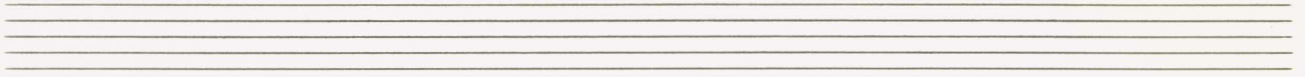


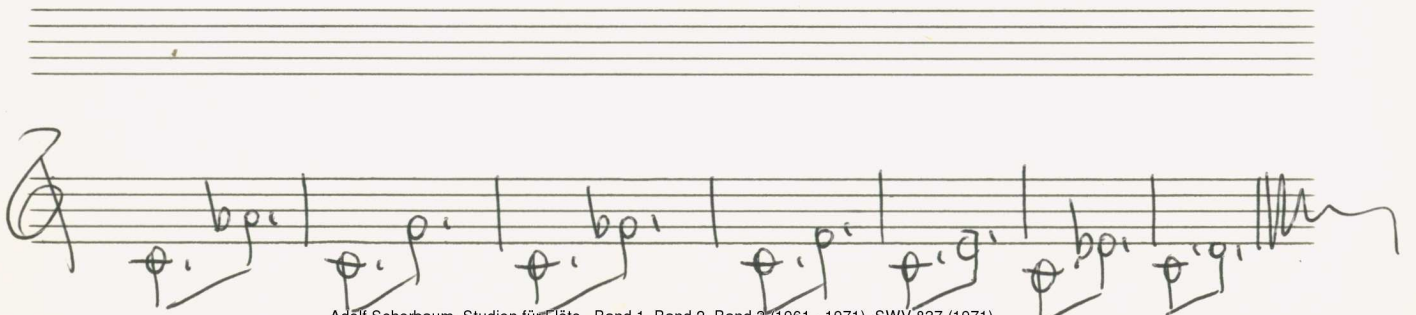
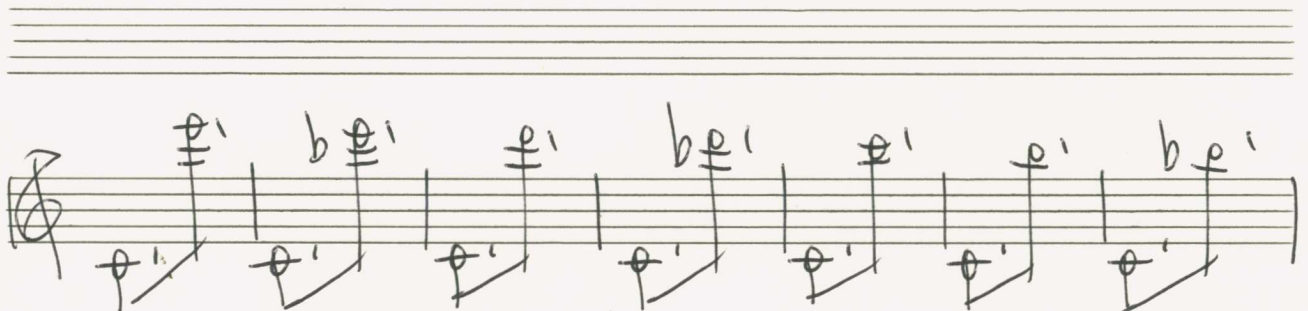
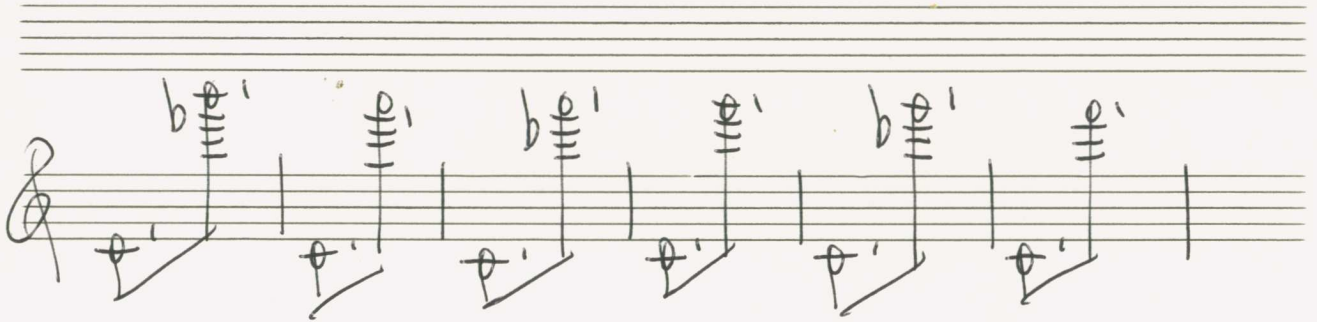




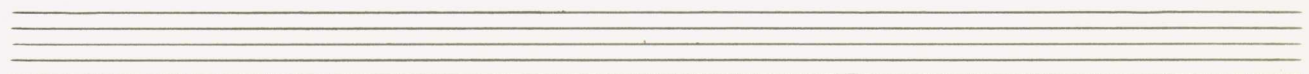
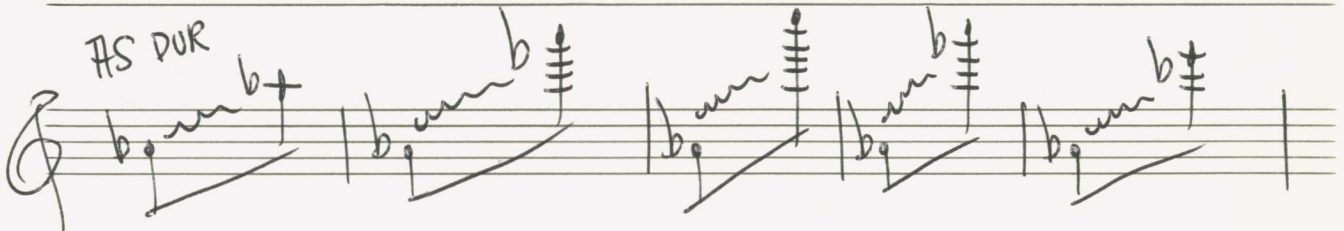
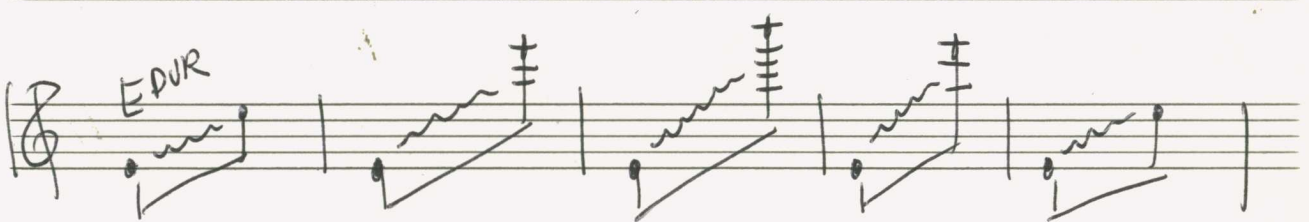
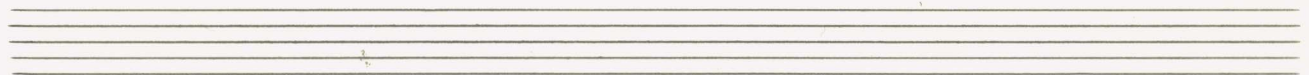
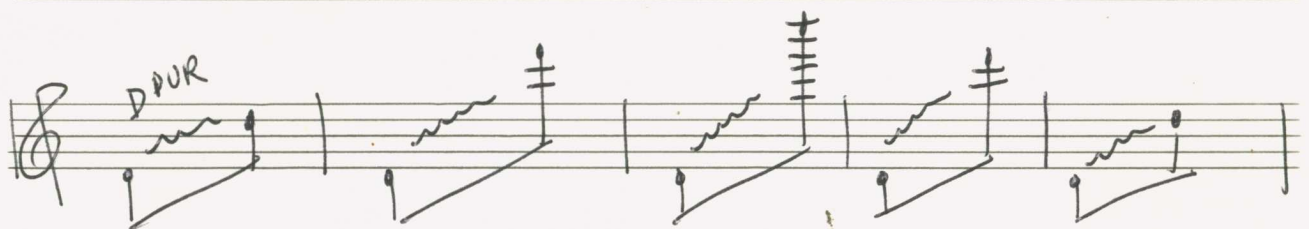
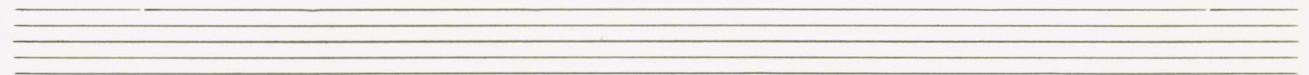
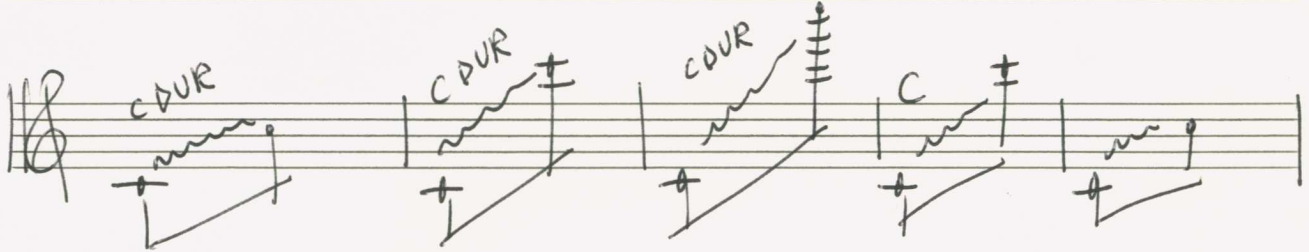
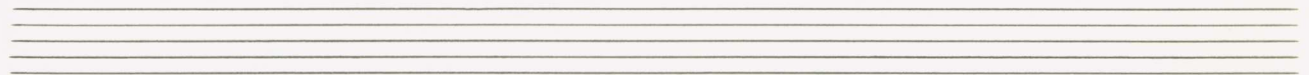
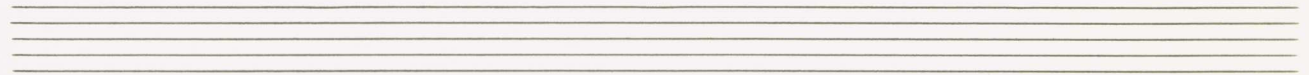












B DUR

Handwritten musical notation for the B major scale, first five notes: B, C#, D, E, F#. The notes are written on a treble clef staff with a wavy line above them. A sharp sign is placed above the B note, and a flat sign is placed above the F# note.

C DUR

Handwritten musical notation for the C major scale, first five notes: C, D, E, F, G. The notes are written on a treble clef staff with a wavy line above them. A sharp sign is placed above the C note, and a sharp sign is placed above the F note.

CIS DUR

Handwritten musical notation for the C# major scale, first five notes: C#, D#, E, F#, G#. The notes are written on a treble clef staff with a wavy line above them. A sharp sign is placed above the C# note, and a sharp sign is placed above the F# note.

ES DUR

Handwritten musical notation for the E major scale, first five notes: E, F#, G#, A, B. The notes are written on a treble clef staff with a wavy line above them. A sharp sign is placed above the E note, and a sharp sign is placed above the F# note.

F DUR

Handwritten musical notation for the F major scale, first five notes: F, G, A, B, C. The notes are written on a treble clef staff with a wavy line above them. A sharp sign is placed above the F note, and a sharp sign is placed above the C note.

G DUR

Handwritten musical notation for the G major scale, first five notes: G, A, B, C, D. The notes are written on a treble clef staff with a wavy line above them. A sharp sign is placed above the G note, and a sharp sign is placed above the C note.

F# DUR

Handwritten musical notation for the F# major scale, first five notes: F#, G#, A, B, C#. The notes are written on a treble clef staff with a wavy line above them. A sharp sign is placed above the F# note, and a sharp sign is placed above the C# note.

F# DUR

Handwritten musical notation for the F# major scale, first five notes: F#, G#, A, B, C#. The notes are written on a treble clef staff with a wavy line above them. A sharp sign is placed above the F# note, and a sharp sign is placed above the C# note.

