

Rhapsodie
für Orgel und
großes Streichorchester

1971-72

Holff Schenker

(A) solo setting

ORGAN Solo

Handwritten musical notation for the first system. It features a treble clef and a circled 'P' dynamic marking. The melody consists of several notes with accidentals (sharps and flats) and a fermata over the final note. The bass line is mostly blank.

2

Handwritten musical notation for the second system. It begins with a circled '2' indicating the second measure. The melody is highly complex with many accidentals and includes a fermata. The bass line has some notes with accidentals.

Handwritten musical notation for the third system. It features a treble clef and a melodic line with various accidentals and a fermata. The bass line has some notes with accidentals.

3

Handwritten musical notation for the fourth system. It begins with a circled '3' indicating the third measure. The melody is highly complex with many accidentals and includes a fermata. The bass line has some notes with accidentals.

Handwritten musical notation for the first system. It features a treble clef and a circled '1' in the first measure. The first measure contains a chord with a flat (b) and a circled '1' below it, followed by a second measure with a circled '6' below it. The second measure contains a chord with a sharp (♯) and a circled '6' below it, followed by a second measure with a circled '6' below it. The notes are written on a five-line staff.

Handwritten musical notation for the second system. It features a treble clef. The first measure contains a chord with a flat (b) and a circled '1' below it, followed by a second measure with a circled '6' below it. The second measure contains a chord with a sharp (♯) and a circled '6' below it, followed by a second measure with a circled '6' below it. The notes are written on a five-line staff.

Handwritten musical notation for the third system. It features a treble clef and a circled '4' in the first measure. The first measure contains a chord with a sharp (♯) and a circled '4' below it, followed by a second measure with a circled '4' below it. The second measure contains a chord with a sharp (♯) and a circled '4' below it, followed by a second measure with a circled '4' below it. The notes are written on a five-line staff.

Handwritten musical notation for the fourth system. It features a treble clef. The first measure contains a chord with a flat (b) and a circled '4' below it, followed by a second measure with a circled '4' below it. The second measure contains a chord with a sharp (♯) and a circled '4' below it, followed by a second measure with a circled '4' below it. The notes are written on a five-line staff.

Handwritten musical notation for the first system. The treble clef is on the left. The key signature has one flat (B-flat). The time signature is 9/8. The notation includes a melodic line with slurs and a bass line with a single note.

Handwritten musical notation for the second system. The treble clef is on the left. The key signature has two sharps (F# and C#). The time signature is 9/8. The notation includes a melodic line with slurs and a bass line with a single note.

Handwritten musical notation for the third system. The treble clef is on the left. The key signature has two flats (B-flat and E-flat). The time signature is 9/8. The notation includes a melodic line with slurs and a bass line with a single note. A circled number '5' is in the top right corner.

(etwas rascher werden (accel))

Handwritten musical notation for the fourth system. The treble clef is on the left. The key signature has one flat (B-flat). The time signature is 9/8. The notation includes a melodic line with slurs and a bass line with a single note.

(accel.)

recapite (1)

(accel.)

(rit.)

solobuch

Handwritten musical score for guitar, first system. It features a guitar diagram with fretted notes and three staves of music. The guitar diagram shows a G major chord (x02320) and a D major chord (xx0232). The first staff has a treble clef and a key signature of one sharp (F#). The second and third staves have bass clefs and a key signature of one flat (Bb). The first staff contains a melodic line with notes G4, A4, B4, C5, and a final chord G4-B4-D5. The second and third staves contain a bass line with notes G2, B2, D3, and a final chord G2-B2-D3.

Handwritten musical score for guitar, second system. It features a guitar diagram with fretted notes and three staves of music. The guitar diagram shows a G major chord (x02320) and a D major chord (xx0232). The first staff has a treble clef and a key signature of one sharp (F#). The second and third staves have bass clefs and a key signature of one flat (Bb). The first staff contains a melodic line with notes G4, A4, B4, C5, and a final chord G4-B4-D5. The second and third staves contain a bass line with notes G2, B2, D3, and a final chord G2-B2-D3.

Handwritten musical score for the first system. It consists of two staves with melodic lines and three staves with sustained notes. The top two staves have notes with accidentals (sharps and flats) and are connected by a slur. The bottom three staves have notes with accidentals and are also connected by a slur. The notes are written in a cursive, handwritten style.

Handwritten musical score for the second system. It consists of two staves with melodic lines and three staves with sustained notes. The top two staves have notes with accidentals (sharps and flats) and are connected by a slur. The bottom three staves have notes with accidentals and are also connected by a slur. The notes are written in a cursive, handwritten style.

(poco rit)

8

Handwritten musical score for strings, measures 7-8. The score is written on five staves. The top two staves (Violins I and II) feature sixteenth-note patterns with slurs and accents, and a 'poco rit' marking above. The bottom three staves (Violas, Cellos, and Double Basses) show sustained notes with slurs and accents. A circled '8' is in the top right corner.

pesante

poco rit

9

Handwritten musical score for strings, measures 9-10. The score is written on three staves labeled '1+2', 'Br.', and 'Cb'. The top staff (Violins) has notes with accents and slurs. The middle staff (Violas) has notes with slurs. The bottom staff (Cellos/Double Basses) has notes with slurs. A circled '9' is in the top right corner.

solo (solo pulg (A)

Handwritten musical notation for the first system. It features a treble clef and a circled 'P' (piano). The notation includes a melodic line with a slur and a bass line with chords and slurs. A circled '10' is present in the bass line.

Handwritten musical notation for the second system. It features a treble clef and a circled '10'. The notation includes a melodic line with a slur and a bass line with chords and slurs.

Handwritten musical notation for the third system. It features a treble clef and a circled '10'. The notation includes a melodic line with a slur and a bass line with chords and slurs.

Handwritten musical notation for the fourth system. It features a treble clef and a circled '10'. The notation includes a melodic line with a slur and a bass line with chords and slurs.

10

Handwritten musical notation for system 1, measures 10-11. Measure 10 has a circled '10' above it. Measure 11 has a circled '11' below it. The notation includes treble and bass staves with notes, rests, and dynamic markings.

Handwritten musical notation for system 2, measures 12-13. Measure 12 has a circled '12' below it. The notation includes treble and bass staves with notes, rests, and dynamic markings.

accel.

Handwritten musical notation for system 3, measures 14-15. Measure 14 has a circled '14' below it. The notation includes treble and bass staves with notes, rests, and dynamic markings.

rit.

Handwritten musical notation for system 4, measures 16-17. Measure 16 has a circled '16' below it. Measure 17 has a circled '17' below it. The notation includes treble and bass staves with notes, rests, and dynamic markings.

(poco rit.)

(A) sehr breit

(subato)

breit

subato

breit

subato

breit

subato

13

passionata

trist (A)

Handwritten musical score for the first system. The top staff is in treble clef and contains a melodic line with notes and accidentals (sharps and flats) grouped by a slur. Below it are four bass clef staves. The first bass staff has a large handwritten number '6' and a sharp sign. The second bass staff has a large handwritten number '8' and a sharp sign. The remaining two bass staves have sharp signs. The system is divided into four measures by vertical bar lines.

Handwritten musical score for the second system. It consists of four staves. The top staff is in treble clef and contains a melodic line with notes and accidentals, grouped by a slur. The second and third staves are in bass clef and contain rhythmic notation with notes and accidentals, also grouped by slurs. The bottom staff is in bass clef and contains a melodic line with notes and accidentals, grouped by a slur. The system is divided into four measures by vertical bar lines.

Handwritten musical score for the first system, consisting of five staves. The notation includes various notes, rests, and dynamic markings such as accents (^) and slurs. The first staff has a treble clef and a key signature of one sharp (F#). The second staff has a treble clef and a key signature of one sharp. The third staff has a bass clef and a key signature of one sharp. The fourth staff has a bass clef and a key signature of one sharp. The fifth staff has a bass clef and a key signature of one sharp. The music is written in a complex, expressive style with many slurs and accents.

Craco uit

Handwritten musical score for the second system, consisting of five staves. The notation includes various notes, rests, and dynamic markings such as accents (^) and slurs. The first staff has a treble clef and a key signature of one sharp (F#). The second staff has a treble clef and a key signature of one sharp. The third staff has a bass clef and a key signature of one sharp. The fourth staff has a bass clef and a key signature of one sharp. The fifth staff has a bass clef and a key signature of one sharp. The music is written in a complex, expressive style with many slurs and accents. A circled number "14" is visible in the top right corner.

Solo (♯) sehr ruhig (coll.)

ORCHESTRA

Handwritten musical score for the first system. It consists of two staves: a treble clef staff and a bass clef staff. The time signature is 4/8. A circled 'P' (piano) dynamic marking is present at the beginning. The music includes various notes, rests, and slurs.

Handwritten musical score for the second system. It consists of two staves: a treble clef staff and a bass clef staff. The key signature changes to one sharp (F#). The music continues with notes, rests, and slurs.

Handwritten musical score for the third system. It consists of two staves: a treble clef staff and a bass clef staff. The key signature changes to two sharps (F# and C#). The music continues with notes, rests, and slurs.

Handwritten musical score for the fourth system. It consists of two staves: a treble clef staff and a bass clef staff. The system ends with a circled '15' and the instruction '(poco rit)'. The music includes notes, rests, and slurs.

Handwritten musical notation for the first system, including a treble clef, a key signature of one sharp (F#), and a time signature of 2/4. A circled 'P' is written below the time signature.

Handwritten musical notation for the first system, showing a series of notes and rests on a five-line staff.

Handwritten musical notation for the second system, including a treble clef and a key signature of one flat (Bb).

Handwritten musical notation for the second system, showing a series of notes and rests on a five-line staff.

Handwritten musical notation for the third system, including a treble clef and a key signature of one sharp (F#).

Handwritten musical notation for the third system, featuring a large '4/8' time signature, a circled 'P', and a circled '16' at the end of the system. The notation includes various notes, rests, and dynamic markings.

Handwritten musical notation for the fourth system, including a treble clef and a key signature of one sharp (F#). The text 'Solo Viol.' is written above the staff.

Handwritten musical notation for the fourth system, featuring a large '6/8' time signature, a circled 'P', and a circled '17' at the end of the system. The text 'güt + dem' is written below the staff.

Handwritten musical score for page 19. The top staff is a treble clef staff containing a melodic line with various accidentals (sharps, flats, naturals) and slurs. Below it are three bass clef staves, each containing a single note with an accidental (flat or natural) and a slur, representing a chordal accompaniment.

(Variation 2)

Solo

Handwritten musical score for page 19, labeled "Solo". It consists of two staves. The top staff is a treble clef staff with a melodic line featuring triplets and various accidentals. The bottom staff is a bass clef staff with a bass line, also featuring triplets and accidentals. A dynamic marking "(20x f)" is present in the first measure of the bass line.

Handwritten musical score for page 20. It consists of two staves. The top staff is a treble clef staff with a melodic line featuring triplets and various accidentals. The bottom staff is a bass clef staff with a bass line, also featuring triplets and accidentals.

(Variation 3)

6
4

(acc?)

Handwritten musical score for a system with five staves. The top two staves contain melodic lines with many accidentals (flats). The bottom three staves contain bass notes with accidentals. The system is divided into two measures by a vertical bar line.

(Variation 4)

Handwritten musical score for a system with two staves. The top staff has a treble clef, a 4/4 time signature, and a circled number 77. It contains a melodic line with triplets and accidentals. The bottom staff has a bass clef and contains bass notes with accidentals. The system is divided into two measures.

Handwritten musical score for a system with two staves. The top staff has a treble clef and contains a melodic line with triplets and accidentals. The bottom staff has a bass clef and contains bass notes with accidentals. The system is divided into two measures.

(Variation 5)

Handwritten musical notation for the first system. The treble clef staff contains a melodic line with eighth notes. The bass clef staff contains chords. The key signature is one sharp (F#) and the time signature is 4/4.

23

Handwritten musical notation for the second system. The treble clef staff contains a melodic line with eighth notes. The bass clef staff contains chords. The key signature is two flats (Bb, Eb) and the time signature is 4/4.

Handwritten musical notation for the third system. The treble clef staff contains a melodic line with eighth notes. The bass clef staff contains chords. The key signature is one sharp (F#) and the time signature is 4/4.

Handwritten musical score for Variation 6, first system. It features three staves: a treble clef staff with a melodic line and a '3' above it, a bass clef staff with a single note, and a grand staff with a bass line. The key signature has one sharp (F#).

immer breiter werden (Variation 6)

Handwritten musical score for Variation 6, second system. It features three staves with a treble clef staff containing a sequence of chords, a bass clef staff with a sequence of chords, and a grand staff with a bass line. A large '6/4' is written on the left side.

Handwritten musical score for Variation 6, third system. It features three staves with a treble clef staff containing a sequence of chords, a bass clef staff with a sequence of chords, and a grand staff with a bass line.

(guit)

25

Prélude (A)

Variation F

Handwritten musical score for the first system. It consists of four staves. The top two staves are in treble clef with a 2/4 time signature. The first staff has a melodic line with a slur over six notes: G4, A4, B4, C5, B4, A4, with accidentals #, #, b, #, #, #. The second staff has a similar melodic line with a slur over six notes: G4, A4, B4, C5, B4, A4, with accidentals #, #, b, #, #, #. The bottom two staves are in bass clef and contain harmonic accompaniment with notes and accidentals.

Handwritten musical score for the second system. It consists of four staves. The top two staves are in treble clef with a 2/4 time signature. The first staff has a melodic line with a slur over six notes: G4, A4, B4, C5, B4, A4, with accidentals #, #, b, #, #, #. The second staff has a similar melodic line with a slur over six notes: G4, A4, B4, C5, B4, A4, with accidentals #, #, b, #, #, #. The bottom two staves are in bass clef and contain harmonic accompaniment with notes and accidentals. A circled number '26' is at the end of the system.

(f) sehr langsam

Handwritten musical score for measures 26-29. The score is written on five staves. The first staff is for the Violin (Vn.), the second for the Viola (Vla.), the third for the Violoncello (Vcllo), and the fourth for the Bass (Basse). The fifth staff is for the Bassoon (Fag.). The time signature is 6/8. The key signature has one sharp (F#). The dynamics are marked 'pp' (pianissimo) and 'f' (forte). The tempo is 'sehr langsam'. The notation includes various notes, rests, and slurs. The bassoon part has some unusual markings, possibly indicating fingerings or breath marks.

27

Handwritten musical score for measures 30-33. The score is written on five staves. The first staff is for the Violin (Vn.), the second for the Viola (Vla.), the third for the Violoncello (Vcllo), and the fourth for the Bass (B). The fifth staff is for the Bassoon (Fag.). The time signature is 6/8. The key signature has one sharp (F#). The dynamics are marked 'f' (forte) and 'arco' (arco). The tempo is 'sehr langsam'. The notation includes various notes, rests, and slurs. The bassoon part has some unusual markings, possibly indicating fingerings or breath marks.

28

großes röh

Handwritten musical score for a piano piece. It features a grand staff with five staves. The top staff has a treble clef and contains a melodic line with a slur and a fermata. The lower four staves have bass clefs and contain a harmonic accompaniment of quarter notes. The key signature has two sharps (F# and C#).

subito $\text{F}\sharp$
 (salvo breit)
 (voll stark)

Presto

Handwritten musical score for a piano piece, continuing from the previous page. It features a grand staff with five staves. The top staff has a treble clef and contains a melodic line with a slur and a fermata. The lower four staves have bass clefs and contain a harmonic accompaniment of quarter notes. The key signature has two sharps (F# and C#).

$\frac{6}{4}$

Andante

Violin

Violoncello

Violoncello

Violoncello

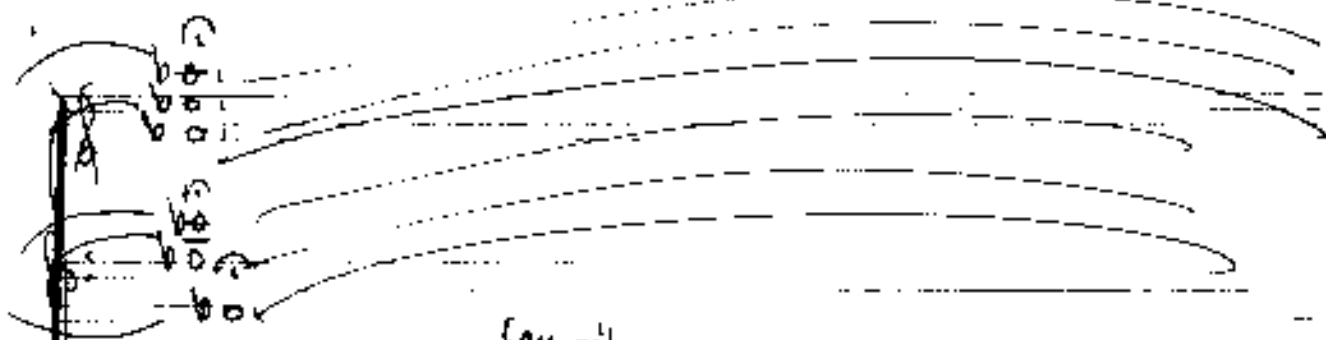
Andante

Violoncello

Violoncello

Violoncello

Fine



passato

Gr. rit

Lunga

Handwritten musical notation consisting of three staves. The first staff begins with a treble clef and a key signature of one sharp (F#). The notation includes various note values, stems, and beams, with some notes marked with accents (^). The second and third staves continue the melodic line with similar notation and key signature.



1971

Handwritten signature

nota
(17 -
Himnau)