

L.v. BEETHOVEN



W.A. MOZART



# NOTENHEFT

---

F. SCHUBERT



J. HAYDN



J. STRAUSS



# KONZERT FÜR FLÖTE UND ORCHESTER

Besetzung:

Flöte solo

2 Oboen

2 Klarinetten in C

2 Fagotte

3 Trompeten in C

4 Hörner in (C) hoch + tief

3 Posunen

1 Tuba

per Streichorchester

Schlagwerk (Vibraphon)

Leuchtpanor mit Hall-Hülse

Spieldauer - zirka 18 - 19 Min.

(p = )



Violin  
Br.  
C+Bass  
Schlagwerk

C  
O  
N  
S  
O  
R  
P.  
P.P.P.

Flageo.  
ad lib.  
(and pont.)

ppp  
ppp  
ppp

4 7 2 4 7 2  
4 7 2 4 7 2  
4 3

ppp  
ppp  
ppp

Flöte Solo (frei) mit (Halt Mikrophon)

mit Vibrato

pp  
f  
f

4  
5  
6

pp  
pp  
7  
8

(B)

(C)

ppp

ppp

ppp

Flagg. ad lib. sub part.

fff

fff

fff

ppp

ppp

ppp

9

10

11

fff

Solo (Flöte)

rit + dim

12

13

14

(D)

> p

ff

> pp

> ppp

15

sehr ruhig (R)

(E)

Flöte  
VIBR.

16 17 18

(F)

19 20 21

(G)

22 23 24

(H)

(ganz frei) —

gros rit — dim — (A)

pp =

pppp

25

26

(i)

resolut

10

ff

ffp

ppp

27

(J)

(sehr ruhig) —

Alle Streicher (und Schlagwerk)

	1	2	3	9	10	11
ppp						fff
Vibraphon						
ppp	16	17	18	19	20	24
Flöte Solo						fff
	12	13	14	15	15	15
						fff

28

29

30

31

32

33

*solo except Flöte Solo*  
*Presto*

16 *fff* 34 35 36

37 38 39 40

34 35 36 37

(K)

*fff* *fff* *fff*

*fff*

C  
G  
B  
E  
A

C  
G  
B  
E  
A

*flugg.*  
sul D  
sul G

*flugg.*  
sul C

*dichtestes Tremolo*

Handwritten musical score for the first system. The top staff is for the flute, showing a series of notes with various accidentals (flats and sharps) and rests. The bottom staff is for the piano, with a large hatched rectangular block covering the first few measures, indicating a specific texture or sound effect.

*noch steigern* → ..... →

Handwritten musical score for the second system. The flute part continues with similar notation. The piano part has a hatched block in the first few measures. A circled 'L' is written at the end of the system, possibly indicating a section or measure.

Flöte (Solo)

Handwritten musical score for the third system, labeled 'Flöte (Solo)'. The time signature is 3/16. The flute part consists of several measures of notes with various accidentals and rests.



soloz Breit  $\frac{8}{8}$  (Achtel) Lento

(groß. zeit-----)

M

$b_b$   $\frac{8}{8}$

2 Oboen  
2 Klarinetten in C  
2 Fag.  
3 Trompeten in C  
4 Hörner in C  
3 Pos. / 1 Tuba  
Viol. I  
Viol. II  
Br.  
Cb.  
Schlagwerk

Block A

Flöte

(frei)

Handwritten musical score for the first system. It consists of three staves: Flöte (Flute), Vibraphon (Vibraphone), and Pedal. The Flöte staff has a treble clef and contains a melodic line with some scribbles. The Vibraphon staff has a treble clef and contains a line with notes and accidentals, including a flat with a plus sign (b+) and a sharp (♯). The Pedal staff has a bass clef and contains a line with notes and accidentals, including a sharp (♯) and a circled sharp (♯). A circled '8' is written above the Vibraphon staff. The word 'Pedal' is written below the Pedal staff with a circled sharp symbol next to it.

Handwritten musical score for the second system. It consists of three staves: Flöte, Vibraphon, and Pedal. The Flöte staff has a treble clef and contains a melodic line with some scribbles. The Vibraphon staff has a treble clef and contains a line with notes and accidentals, including a flat (b) and a sharp (♯). The Pedal staff has a bass clef and contains a line with notes and accidentals, including a flat (b) and a sharp (♯).

Handwritten musical score for the third system. It consists of three staves: Flöte, Vibraphon, and Pedal. The Flöte staff has a treble clef and contains a melodic line with notes and accidentals, including a sharp (♯) and a flat (b). The Vibraphon staff has a treble clef and contains a line with notes and accidentals, including a flat (b) and a sharp (♯). The Pedal staff has a bass clef and contains a line with notes and accidentals, including a flat (b) and a sharp (♯). A circled 'N' is written at the end of the Flöte staff. The word 'Pedal' is written below the Pedal staff with a circled sharp symbol next to it.

Orchester (FFF) pp. rit. -----

Block [F]

so ruhig als möglich

Flöte

Viol.

Br.

Ott.

pp

collegio (mit Holz)

(von [O] - [P] = Block [B])

Handwritten musical score system 1. The top staff (flute) contains a melodic line with notes and accidentals (sharps and flats) and a wavy line above it. The bottom three staves (orchestra) contain chordal accompaniment with notes and accidentals.

Handwritten musical score system 2. The top staff (flute) contains a melodic line with notes, accidentals, and wavy lines. The bottom three staves (orchestra) contain chordal accompaniment with notes and accidentals.

Handwritten musical score system 3. The top staff (flute) contains a melodic line with notes, accidentals, wavy lines, and a boxed-in section marked with a 'P' in a square. The bottom three staves (orchestra) contain chordal accompaniment with notes, accidentals, and dynamic markings like 'pp' and '3'.

(Q)

(R)

Block [B]

Vibraphon

ppp

Pad. ~~♩~~

(Block [B] = Flöte - Streicher + Vibraphon)

(S)

(S)

Block [B]

3 Tromp. in C

4 Hörner in C

3 Pos. 1. Tub.

ppp

ppp

ppp

Block [C] = Block [B] (Flöte - Streicher - Vibraphon + Blech) = Bl. [C]

sempre crescendo und accel. →

(T) Violinen (nat.) übergehen → (U)

Block [ ] Block [ ]

sempre cresc. und accel. →

Flöte

dazu Block [ ] (aber Flöte folgt anders)

sempre cresc. und accel. →

so rasch als möglich

$\frac{8}{8}$  (Hektel)

Flöte Solo **f**

Block **gestopft** **pp** **VIBR** **pp**

(Block C) *mit Block*

**W** (Flatterz) (ad. lib.)

Block C *mit Block*

das zweite + Block-Block dynamisch stark steigern

Handwritten musical notation on a single staff, featuring a melodic line with various accidentals (sharps, flats, naturals) and a large slur over the first two measures. The notation is somewhat abstract and appears to be a sketch or a specific performance instruction.

Handwritten musical notation on a single staff, showing a melodic line with a large slur and a circled 'X' at the end. The notation includes various accidentals and a wavy line below the staff, possibly indicating a tremolo or a specific performance technique.

Handwritten musical notation on a single staff, featuring a melodic line with a circled 'Y' at the end. The notation includes various accidentals and a wavy line below the staff. Annotations include "freie Improvisation (aber im Takt)" and "mit Hall einblenden bis @".

freie Improvisation (aber im Takt)

mit Hall einblenden bis @

Block [C] (777)

Block

Handwritten musical notation on a single staff, featuring a melodic line with a circled 'Y' at the end. The notation includes various accidentals and a wavy line below the staff. Annotations include "Block [C]" and "(Block)".

Block [C]

(Block)



Hall aus



Orchester (FFF)

(Z)

(A1)

S  
C  
H  
E  
R  
B  
A  
U  
M

(B1)

(Orchester) (Block offen)

(FFF) (Block (F))

(C1)

S  
C  
H  
E  
R  
B  
A  
U  
M

*P*restissimo (4/4)

(D1)

Violinen

Bratschen C pppp  
N

Celli+B. S pppp  
O  
R  
P. pppp

ppp

Block D

mul tasto (am Griffbrett)

(E1)

Block D

(F1)

Flöte

*pp*

4

Flöte sempre crescendo

Flöte [D]

Flöte [D]

Flöte [D]

sempre cresc.

(G1)

Flöte [D]

(H1)

Flöte [D]

(11)

(nur Flöte alles einen Pauken höher)

$\frac{4}{4}$   $\text{p}$

(letzten 9 Takte nochmals)

$\frac{4}{4}$

(11)

(nur Flöte wieder einen Pauken höher)

$\frac{4}{4}$   $\text{mf}$

(letzten 9 Takte nochmals)

$\frac{4}{4}$

(11)

(nur Flöte wieder einen Pauken höher)

$\frac{4}{4}$   $\text{f}$

(letzten 9 Takte nochmals)

$\frac{4}{4}$

L1

( nur Flöte wieder einen Gangton höher )

M1

( nur Flöte wieder einen Gangton höher )

N1

(von (N1) - Q1) = Block [E]

01

Handwritten musical score for a concert band/orchestra. The score is written on multiple staves, each labeled with an instrument or section:

- 2OB** (2nd Oboe): *ppp*, *a2*  $b \sharp \sharp + b \sharp$
- 2 Klar. C** (2nd Clarinet in C): *ppp*, *a2*  $b \sharp \sharp + b \sharp$
- 2 Fag.** (2nd Bassoon): *ppp*, *a2*  $b \sharp \sharp + b \sharp$
- STR.** (Strings): *ppp*, *a3*
- 4 Hörn. C** (4 Horns in C): *ppp*, *a4*
- 3 Pos. 1 Tuba** (3 Trombones, 1 Tuba): *ppp*, *a4*
- Viol.** (Violins): *ppp*, *senza*, *senza*, *offen*, *Unterere Hälfte - gedämpft.*
- Vi.** (Violas): *ppp*, *offen*
- Bu.** (Bassoons): *ppp*, *offen*
- Celli** (Cellists): *ppp*, *offen*
- Paße** (Double Basses): *ppp*, *offen*

The score includes various musical notations such as notes, rests, and dynamic markings. A circled number '01' is present in the upper right corner and another circled number '01' is written in the lower left corner of the score area.

Handwritten musical score for Concerto for Flute and Orchestra, Op. 879 (1972) by Adolf Scherbaum. The score consists of 12 staves. The first three staves are for strings (Violins I, Violins II, and Violas/Cellos), each with a long melodic line. The next three staves are for woodwinds (Flute, Clarinet, Bassoon), with rhythmic patterns and some melodic fragments. The next three staves are for brass (Trumpets, Trombones, and Tuba/Euphonium), with block chords and some melodic lines. The final two staves are for the Flute and Cello/Double Bass, featuring more complex rhythmic and melodic passages. The score is written in a single system with a large brace at the top.

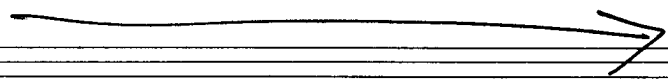
Q1

The image shows a handwritten musical score for a woodwind ensemble. It consists of 11 staves. The top four staves are for woodwinds (flute, oboe, clarinet, and bassoon), and the bottom seven staves are for strings. The score is divided into three measures. The first measure contains complex melodic lines for the woodwinds and rhythmic patterns for the strings. The second and third measures feature sustained notes and rests for the woodwinds, and rhythmic patterns for the strings. The notation includes various accidentals (sharps, flats, naturals), slurs, and dynamic markings like 'p' and 'f'. A circled 'Q1' is in the top right corner.



oder erzeugt (frei - Flöte Solo

( ins Tempo  $\frac{4}{4}$  übergehen →



*Prestissimo* (R1) (S1) (T1) (U1)

4/4 Orchester [Block E]

[Block E]

[Adagio] (*dempre dim + rit...*)

S  
U  
I  
T  
A  
S  
N  
A  
G  
S

Größtes mit — dim. —

V1

G - P<sub>1</sub>

V I O L I N N E N

8  
8

74 8

pppp

C # 8

pppp

O

pppp

N # 8

pppp

S 8

pppp

R # 8

pppp

D # 8

Bratschen

pppp

N # 8

pppp

↑ 8  
↓ 8

Celli +  
Bass

pppp

O 8  
# 8

S  
CHLAG  
pppp

W  
E  
R  
K

Handwritten rhythmic notation: ♩. ♩ ♩ ♩ ♩ ♩ ♩ ♩ ♩

Handwritten notes and symbols: 777, 777, 777, 777



Flöte (*frei*) <sup>ganz</sup> (viel Hall - Zusatzlautsprecher -)

Fl.

pp <

ffpp

VIBR

Tonband (Flöte)

Hall klingen lassen - ausbleichen (von Tonbandaufnahme)

Handwritten musical score for a woodwind section, likely Flute and Clarinet. The score is written on four staves. The first staff has a treble clef and a key signature of one sharp (F#). It begins with a dynamic marking of *pp* and a tempo marking of *4/4*. The second and third staves are grouped with a brace on the left and contain a large rectangular area with diagonal hatching, indicating a section where the instruments are silent. The fourth staff has a bass clef and contains a melodic line with notes marked with *b+* and *b-* above them, and a *pp* dynamic marking. The score concludes with a final note marked with a *pp* dynamic and a wavy line above it.

( ins Nichts — ausklingen ) —

Handwritten musical score for Flute and Vibraphone. The Flute part is on the top staff, starting with a treble clef and a key signature of one sharp (F#). It features a melodic line with notes marked with *pp* and *pppp* dynamics. The Vibraphone part is on the bottom staff, starting with a treble clef and a key signature of one sharp (F#). It features a melodic line with notes marked with *pppp* dynamics. The score concludes with a large, stylized "FIN" written in a box on the right side.

1972  
Adolf Scherbaum