

PARTITUR

Conzertino für
Flöte und
Jazzensemble
1972

Notenheft

Adolf Schöberl

Besetzung:
 Solo Flöte
 3 Trompeten (Jazz in B) in Partitur in C ^{schärf}
 4 Hörner in F " " "
 3 Posunen (Jazz)
 1 Tuba
 Solo Bass
 Schlagzeug - Vibraphon

VAVACE

1

Solo

3TRUMP
in C
natural

4H
in C
natural

3POS

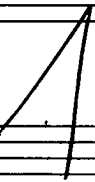
1Tuba

2Bb

Schlagz

Viola

pp < i i l l l



2

Handwritten musical score for the first system. It consists of several staves. The top staff is a blank five-line staff. Below it are two staves for woodwinds (flute and clarinet), with notes and accidentals. The next two staves are for strings, with notes and accidentals. The bottom staff of this system contains rhythmic notation (vertical lines) and a treble clef.

Handwritten musical score for the second system. It consists of two staves for strings with notes and accidentals. Below them are two staves for percussion, with notes and accidentals. A large handwritten number '2' is written between the two staves.

Timba = E. Bad!

3

A handwritten musical score for a woodwind ensemble. The score consists of ten staves. The top five staves are grouped by a brace on the left and contain woodwind parts. The bottom three staves are grouped by a brace on the left and contain a bass line. The score is divided into four measures. The first measure shows a sequence of notes: G4, A4, B4, C5, B4, A4, G4. The second measure shows a sequence: F4, G4, A4, B4, A4, G4, F4. The third measure shows a sequence: E4, F4, G4, A4, G4, F4, E4. The fourth measure shows a sequence: D4, E4, F4, G4, F4, E4, D4. The notes are written as stems with flags, indicating eighth notes. The bass line is written in a single staff with a treble clef and contains the same sequence of notes as the woodwind parts.

3

4

Handwritten musical score for a jazz ensemble. The score is written on a grand staff with five systems of staves. The top system consists of a treble clef staff with a whole rest, followed by two bass clef staves with chords and accidentals (sharps and flats), and a bass clef staff with a whole rest. The second system continues with similar notation, including a bass clef staff with a sequence of notes: 7, 9, 2, 1, 2. The third system shows a bass clef staff with a whole rest and a bass clef staff with a whole rest. The fourth system shows a bass clef staff with a whole rest and a bass clef staff with a whole rest. The fifth system shows a bass clef staff with a whole rest and a bass clef staff with a whole rest. The score is marked with a circled '4' in the top right corner.

4

15

Handwritten musical score for a jazz ensemble, measures 15-18. The score is written on a grand staff with a treble clef on the left and a bass clef on the right. The music is in 4/4 time and features complex harmonic structures with many accidentals and ties. The first two staves (treble clef) contain the main melodic and harmonic lines, with various chords and intervals. The third staff (bass clef) contains a bass line with some notes and rests. The fourth staff is mostly empty, with a few notes in the first measure. The fifth staff contains a rhythmic pattern of eighth notes. The sixth staff is empty. The score is enclosed in a large bracket on the left side.

J

Handwritten musical score for flute and jazz ensemble. The score is divided into two measures, labeled (6) and (7) in circled numbers. Measure (6) contains a series of chords: C, G, C, G, C, G, C, G, C, G, C, G, C, G, C, G, C, G. Measure (7) contains a series of chords: C, G, C, G, C, G, C, G, C, G, C, G, C, G, C, G, C, G. The score includes various musical notations such as notes, rests, and dynamic markings like *frei*, *accel*, and *pp*. A large bracket spans across measures 6 and 7, and a large number '6' is written below the staff in measure 7.

Solo *frei*

rit *dim*

7

Andante $\frac{4}{4}$

Handwritten musical score for a jazz ensemble. The score is written on five staves. The top staff is for the trumpet, with notes and slurs, and a dynamic marking of *p*. The second staff is for the piano, with chords and a dynamic marking of *pp*. The third staff is for the bass, with notes and a dynamic marking of *pp*, and a note "(BASS solo)". The fourth staff is for the drums, with notes and a dynamic marking of *pp*. The fifth staff is for the double bass, with notes and a dynamic marking of *pp*. The score is marked with various dynamics and articulations, including *3 TRUMP.*, *3 POS.*, and *SCC*.

Handwritten musical score for horn and piano. The top staff is for the horn, with notes and a dynamic marking of *pp*. The bottom staff is for the piano, with notes and a dynamic marking of *pp*. The score is marked with various dynamics and articulations, including *pp*.

9

The image shows a handwritten musical score for a jazz ensemble. The score is written on a system of staves. The top staff is for the flute, and the lower staves are for piano accompaniment. The music is divided into three measures. The first measure features a melodic line in the flute with notes G4, A4, Bb4, and C5, and piano accompaniment with chords Gb7 and Ab7. The second measure continues the melodic line with notes Bb4, C5, Bb4, and A4, with piano accompaniment chords Ab7 and Gb7. The third measure concludes the melodic line with notes G4, A4, Bb4, and C5, with piano accompaniment chords Gb7 and Ab7. The score includes various musical notations such as accidentals, dynamics (fp), and articulation marks.

9

10

Handwritten musical score for a concertino for flute and jazz ensemble, measures 10-13. The score is written on a grand staff with five systems of staves. The first system (measures 10-11) features a melodic line in the upper staff with various accidentals and a dynamic marking of *p*. The second system (measures 12-13) features a piano accompaniment with chords and a dynamic marking of *fp*. The third system (measures 14-15) features a melodic line in the lower staff with a dynamic marking of *p*. The fourth system (measures 16-17) features a piano accompaniment with chords and a dynamic marking of *fp*. The fifth system (measures 18-19) features a melodic line in the lower staff with a dynamic marking of *p*. The score is marked with various dynamics (*p*, *fp*) and includes a double bar line at the end of measure 19.

10

Handwritten musical score for a woodwind ensemble. The score is written on a grand staff with multiple staves. The notation includes complex chordal textures with various accidentals (sharps, flats, naturals) and stems. There are several measures of music, with some measures containing multiple notes and stems. The score is marked with dynamics such as *p* (piano) and *p=*. The notation is dense and appears to be a sketch or a working draft.

AA

cresc. (11)

Handwritten musical score for a jazz ensemble, measures 11-14. The score includes a flute line with trills and slurs, piano accompaniment with chords and dynamics (hp, p), and a bass line with rhythmic patterns. The music is marked 'cresc.' and measure 11 is circled.

12

Handwritten musical score for a jazz ensemble. The score consists of several staves. The top staff has a treble clef and contains a melodic line with notes and accidentals (flats and sharps). Below it are several staves with bass clefs, containing chords and rhythmic patterns. Dynamic markings such as 'f' (forte) are present. A marking 'con sord' (con sordina) is written on one of the lower staves. The score is divided into measures by vertical bar lines.

↑
col Sildymal

13 + (Imp)

Handwritten musical score for a jazz ensemble. The score is written on ten staves. The top staff is for the flute, with a circled "12" above it. The next three staves are for a string quartet. The fifth staff is for the saxophone section, with the instruction "can sax + tuben" written above it. The sixth staff is for the bass, with "Bass" written above it. The seventh staff is for the drums, with "Schlag." written above it. The score is divided into three measures. The first measure has a key signature of one flat and a common time signature. The second measure has a key signature of two flats and a common time signature. The third measure has a key signature of one sharp and a common time signature. There are various musical notations including notes, rests, and dynamic markings.

14

gut + oliv

Handwritten musical score for a piece titled "gut + oliv". The score consists of eight staves. The top staff has a treble clef and contains a melodic line with various accidentals and dynamics. The second staff has a bass clef and contains a bass line with a "din" annotation. The third and fourth staves are also in bass clef and contain bass lines with various dynamics. The fifth staff has a treble clef and contains a melodic line with a "pp" dynamic. The sixth and seventh staves are in bass clef and contain bass lines with various dynamics and a "pp" dynamic. The eighth staff is in bass clef and contains a bass line with a "pp" dynamic. The score is heavily annotated with slurs, accents, and dynamic markings.

15

Adolf Scherbaum

13

(frei)

16

Handwritten musical score for flute and jazz ensemble. The score consists of eight staves. The top staff is for the flute, starting with the tempo marking "Allegretto". It features a melodic line with various dynamics including *pp* and *f*, and includes slurs and accents. The remaining seven staves are for the jazz ensemble, each containing a whole note chord with a dynamic marking of *pp*. The chords are: Staff 2: C major (C-E-G); Staff 3: D major (D-F-A); Staff 4: E major (E-G-B); Staff 5: F major (F-A-C); Staff 6: G major (G-B-D); Staff 7: A major (A-C-E); Staff 8: B major (B-D-F). A large slur encompasses the entire ensemble section. A vertical line on the right side of the score indicates the end of the section.

17

14

Handwritten musical score for a concertino for flute and jazz ensemble. The score consists of eight staves. The top staff is for the flute, with notes and dynamics like 'pp' and 'ppp'. The next four staves are for a string quartet (Violin I, Violin II, Viola, and Cello/Double Bass), each with a long, sustained note and a 'ppp' dynamic marking. The bottom staff is for the double bass, with notes and a 'ppp' dynamic marking. The score is enclosed in a large hand-drawn bracket on the left side.

18

sehr
hoch

18

Handwritten musical score for a woodwind ensemble, measures 1-4. The score is written on six staves. The first three staves are for woodwinds (flute, clarinet, saxophone) and the last three are for brass (trumpet, trombone, tuba/euphonium). The notation includes various notes, rests, and articulation marks. A large bracket on the left side groups the first three staves. The bottom staff has some notes with a sharp sign and a slash through them.

Handwritten musical score for piano accompaniment, measures 1-4. The score is written on two staves (treble and bass clef). The notation includes various notes, rests, and articulation marks. A large arrow points from the first staff of the woodwind section down to the first staff of the piano section.

Handwritten musical score for a concertino for flute and jazz ensemble. The score is written on a grand staff with five systems. The first system contains a treble clef and a key signature of two flats (B-flat and E-flat). The second system contains a bass clef and a key signature of one flat (B-flat). The third system contains a treble clef and a key signature of one flat (B-flat). The fourth system contains a bass clef and a key signature of one flat (B-flat). The fifth system contains a treble clef and a key signature of one flat (B-flat). The score includes various musical notations such as notes, rests, accidentals, and dynamic markings. There are also some handwritten annotations and a large '21' at the bottom.

Bab?

21

16

Solo (Flöte)

17

Handwritten musical notation for a flute solo, including notes with accidentals and slurs. Below the notes is the text: diese 4 Takte soll lib. (facet)

Four empty musical staves, likely for piano accompaniment, with a large bracket on the left side.

Handwritten musical notation for a bass line (Bass) and a drum part (Schlag.). The bass line includes notes with accidentals and a circled 'ff' dynamic marking. The drum part includes a circled 'mf' dynamic marking and rhythmic notation.

22

Solo

Bass

Schlags

The first system of the handwritten musical score consists of three staves. The top staff is labeled 'Solo' and contains a melodic line with notes and accidentals: $\text{g} \cdot \text{b}_2 \text{f}' \text{g}$, $\text{f}' \text{g} \cdot \text{b}_2 \text{f}' \text{g}$, $\text{b}_2 \text{g} \cdot \text{b}_2 \text{f}' \text{g}$, and $\text{f}' \text{g} \cdot \text{f}' \text{g}$. The middle staff is labeled 'Bass' and contains a bass line with notes and accidentals: $\text{f}' \text{f}' \text{g} \text{g}$, $\text{b}_2 \text{g} \text{g} \text{g} \text{g}$, $\text{f}' \text{f}' \text{g} \text{g}$, and $\text{b}_2 \text{g} \text{g} \text{g} \text{g}$. The bottom staff is labeled 'Schlags' and contains rhythmic notation with a circled 'f' and various slash marks. There are circled 'f' symbols in the Solo and Bass staves as well.

The second system of the handwritten musical score consists of three staves. The top staff is labeled 'Solo' and contains a melodic line with notes and accidentals: $\text{b}_2 \text{f}' \text{b}_2 \text{f}' \text{b}_2 \text{f}'$, $\text{b}_2 \text{f}' \text{g} \cdot \text{b}_2 \text{f}'$, $\text{f}' \text{g} \cdot \text{b}_2 \text{f}'$, and $\text{f}' \text{g} \cdot \text{b}_2 \text{f}'$. The middle staff is labeled 'Bass' and contains a bass line with notes and accidentals: $\text{f}' \text{f}' \text{g} \text{g}$, $\text{b}_2 \text{g} \text{g} \text{g} \text{g}$, and a long horizontal line with a slash. The bottom staff is labeled 'Schlags' and contains rhythmic notation with slash marks.

The third system of the handwritten musical score consists of three staves. The top staff is labeled 'Solo' and contains a melodic line with notes and accidentals: $\text{f}' \text{g} \cdot \text{f}' \text{g}$, $\text{f}' \text{g} \cdot \text{b}_2 \text{f}' \text{g}$, $\text{b}_2 \text{g} \cdot \text{b}_2 \text{f}' \text{g}$, and $\text{b}_2 \text{g} \cdot \text{b}_2 \text{f}' \text{g}$. The middle staff is labeled 'Bass' and contains a bass line with notes and accidentals: $\text{f}' \text{f}' \text{g} \text{g}$, $\text{b}_2 \text{g} \text{g} \text{g} \text{g}$, and a long horizontal line with a slash. The bottom staff is labeled 'Schlags' and contains rhythmic notation with slash marks.

(Zweiter Block A dazu)

(25)

Handwritten musical score for the first system, measures 1-4. The notation includes a treble clef, a key signature of one sharp (F#), and a 2/4 time signature. The melody consists of eighth notes with various accidentals. The bass line includes chords and rests.

Handwritten musical score for the second system, measures 5-8. The notation includes a treble clef, a key signature of one sharp (F#), and a 2/4 time signature. The melody consists of eighth notes with various accidentals. The bass line includes chords and rests.

p = 2te + Block A dazu

Handwritten musical score for the third system, measures 9-12. The notation includes a treble clef, a key signature of one sharp (F#), and a 2/4 time signature. The melody consists of eighth notes with various accidentals. The bass line includes chords and rests.

25

(Block A (bestellt aus ganzem Block) Schlagzeug (nicht Bass))

19

3TR

4H

3Pos

2Bass

Schlag

Tempo overento

Block A 3 Takte

Bass?

Flöte

Bass

Schlag

Block A

Handwritten musical score for Block A, measures 1-3. The score is written on four staves: Flute (top), Bassoon (second), Trombone (third), and Drums (bottom). The Flute staff contains melodic lines with accidentals (sharps and flats) and slurs. The Bassoon staff contains rhythmic notation. The Trombone staff contains rhythmic notation with slurs. The Drums staff contains rhythmic notation with slurs. The entire section is bracketed and labeled "Block A".

Handwritten musical score for Block A, measures 4-6. The score is written on four staves: Flute (top), Bassoon (second), Trombone (third), and Drums (bottom). The Flute staff contains melodic lines with accidentals and slurs. The Bassoon staff contains rhythmic notation with dynamic markings like *mf* and *f*. The Trombone staff contains rhythmic notation with dynamic markings like *f*. The Drums staff contains rhythmic notation with dynamic markings like *f*. The number "20" is circled in the top right corner. The entire section is bracketed and labeled "Block A".

Handwritten musical score for Block A, measures 1-3. The score is written on five staves. The top staff is a treble clef with a key signature of one sharp (F#) and a 7-measure rest. The second staff is an alto clef with notes: F#4, F#4, F#4, F#4, Bb4, Bb4, Bb4, Bb4. The third staff is a bass clef with notes: Bb4, Bb4, Bb4, Bb4, F#4, F#4. The fourth and fifth staves are empty with a slash and a sharp sign. A bracket below the staves is labeled "Block A".

Handwritten musical score for Block A, measures 4-6. The score is written on five staves. The top staff is a treble clef with notes: Bb4, Bb4, Bb4, Bb4, F#4, F#4, F#4, F#4, Bb4, Bb4, Bb4, Bb4, F#4, F#4, F#4, F#4. The second staff is an alto clef with notes: G4, G4, Bb4, G4, G4, G4, Bb4, G4, G4, G4, Bb4, G4, G4, G4, Bb4, G4. The third staff is a bass clef with notes: G4, G4, Bb4, G4, G4, G4, Bb4, G4, G4, G4, Bb4, G4, G4, G4, Bb4, G4. The fourth and fifth staves are empty with a slash and a sharp sign. A bracket below the staves is labeled "Block A".

27

22

Handwritten musical score for a 7-staff ensemble. The score is written in treble clef with a key signature of one sharp (F#). The first staff has a circled '22' in the top right corner. The notation includes various notes, rests, and accidentals. A 'Solo' section is marked in the sixth staff, which contains rhythmic notation (e.g., 1 1 2 1 2) and a complex melodic line with many accidentals. The score is divided into measures by vertical bar lines.

28

Denke dir bei mir leiser

OFFEN

29

Handwritten musical score for page 23. The score consists of several staves. The top two staves are piano parts with notes and chords. The bottom two staves are bass parts with notes and chords. The music is written in a style that includes slurs, accents, and dynamic markings.

Solo !! *(cresce dim.)* *(ohne rit-----)*

Handwritten musical score for page 24. It features a single staff with notes and a sequence of numbers 1 through 8. The notes are marked with a circled 'p' and a 'pp' dynamic marking. The sequence of numbers is written below the staff.

flöte (solo)
frei

largo

p

breit

breit (cresc.)

mf

ff

Duet

Solo

3TR

4H

3Pos

Tuba

BarB

Schlag

Fine

Solo
frei

1
9
7
2