

KONZERT

FÜR FLÖTE UND
(Jazzensemble)

1972

Adolf Scherbaum

Konzert für Flöte und Ensemble

1992

H. Scherbaum

Flöte (frei)

pp <

Reheinsätze (im Stunden nach bei D.C. spielen)

pp =

Reheinsätze (Stück 3. Pos.)

1

CODA

pit - der

4/4 Ruhig (slow)

Flöte

Bass

Schlagzeug

3 Pos.

3 Tröp.

Handwritten musical notation on a grand staff. The upper staff (treble clef) begins with a dynamic marking $fp =$ and contains a melodic line with various accidentals (sharps and naturals) and a slur. The lower staff (bass clef) contains a rhythmic accompaniment with vertical stems and beams.

Handwritten musical notation on a grand staff. The upper staff (treble clef) features a melodic line with a slur and a dynamic marking $pp =$. The lower staff (bass clef) contains a rhythmic accompaniment with vertical stems and beams.

Handwritten musical notation on a grand staff. The upper staff (treble clef) features a melodic line with a slur, a dynamic marking fp , and a circled number 2. The lower staff (bass clef) contains a rhythmic accompaniment with vertical stems and beams.

Handwritten musical notation on a grand staff. The upper staff (treble clef) features a melodic line with a slur and a dynamic marking $fp =$. The lower staff (bass clef) contains a rhythmic accompaniment with vertical stems and beams.

Handwritten musical score for the first system, measures 1-3. It features a treble clef with a key signature of one sharp (F#) and a common time signature (C). The melody in the treble clef starts with a half note F#4, followed by quarter notes G4, A4, and B4, then a half note C5. The bass clef accompaniment consists of quarter notes: F#2, G2, A2, B2, C3, D3, E3, F3. A dynamic marking 'p' is present in both staves. A circled 'P' is written below the first measure. A circled '3' is written at the end of the system.

Handwritten musical score for the second system, measures 4-6. It features a treble clef with a key signature of one sharp (F#) and a common time signature (C). The melody in the treble clef starts with a half note F#4, followed by quarter notes G4, A4, and B4, then a half note C5. The bass clef accompaniment consists of quarter notes: F#2, G2, A2, B2, C3, D3, E3, F3. A dynamic marking 'p' is present in both staves. A circled '3' is written at the end of the system.

Handwritten musical score for the first system. The system consists of four staves. The top staff is a treble clef with a key signature of one sharp (F#) and a 2/4 time signature. It contains a melody line with slurs and accents. The second staff is a bass clef with a 'mf' dynamic marking. The third staff is a piano accompaniment with chords and a 'mf' dynamic marking. There are also some handwritten annotations like 'x x x x' above the piano part.

Handwritten musical score for the second system. The system consists of four staves. The top staff is a treble clef with a key signature of one sharp (F#) and a 2/4 time signature. It contains a melody line with slurs and accents. The second staff is a bass clef with a 'fp' dynamic marking. The third staff is a piano accompaniment with chords and a 'fp' dynamic marking. The bottom staff is a bass clef with a 'fp' dynamic marking.

Handwritten musical notation on two staves. The top staff is in treble clef with a key signature of one sharp (F#) and a 4/4 time signature. It contains a melodic line starting with a quarter note F#4, followed by a quarter rest, a quarter note G4, and a quarter note A4. The bottom staff is in bass clef and contains a bass line with a quarter note F3, a quarter note G3, and a quarter note A3. A dynamic marking *f* is present below the first measure of the bass staff.

Handwritten musical notation on two staves. The top staff is in bass clef and contains a complex melodic line with many beamed notes and slurs. It includes dynamic markings *f* and *decrescendo*. The bottom staff is in treble clef and contains a bass line with a few notes and rests. A dynamic marking *f* is present below the first measure of the bass staff.

Handwritten musical notation on two staves. The top staff is in treble clef and contains a melodic line with a circled number '4' at the end. The bottom staff is in bass clef and contains a bass line with a circled *f* dynamic marking. A dynamic marking *f* is also present below the second measure of the bass staff.

Handwritten musical notation on two staves. The top staff is in bass clef and contains a complex melodic line with many beamed notes and slurs. It includes dynamic markings *f* and *43*. The bottom staff is in treble clef and contains a bass line with a few notes and rests. A dynamic marking *f* is present below the first measure of the bass staff.

Handwritten musical score for the first system, consisting of five staves. The top staff features a complex melodic line with many notes and accidentals, including a circled '4' below it. The second staff has a few notes with accidentals and a dynamic marking of *ffp*. The third staff contains rhythmic markings and a dynamic marking of *ffp*. The fourth staff shows a melodic line with a dynamic marking of *ffp*. The fifth staff shows a melodic line with a dynamic marking of *ffp* and a circled '4' below it.

5

Handwritten musical score for the second system, consisting of five staves. The top staff features a complex melodic line with many notes and accidentals, including a circled '5' above it. The second staff has a few notes with accidentals and a dynamic marking of *ffp*. The third staff contains rhythmic markings and a dynamic marking of *ffp*. The fourth staff shows a melodic line with a dynamic marking of *ffp*. The fifth staff shows a melodic line with a dynamic marking of *ffp*.

Handwritten musical score for the first system. The top staff is in treble clef and contains a complex melodic line with many notes and slurs. The second staff is in bass clef and contains a simple accompaniment line. The third and fourth staves form a grand staff with piano accompaniment, including dynamic markings such as f , ff , and pp .

Handwritten musical score for the second system. The top staff is in treble clef and contains a complex melodic line with many notes and slurs. The second staff is in bass clef and contains a simple accompaniment line. The third and fourth staves form a grand staff with piano accompaniment, including dynamic markings such as f , ff , and pp .

Handwritten musical score for the first system. The top staff is in treble clef and contains a melodic line with a dynamic marking of *ff* and a crescendo hairpin. The middle staff is in bass clef and contains a piano accompaniment with dynamic markings of *fp* and *ff*. The bottom two staves are in bass clef and contain a piano accompaniment with dynamic markings of *ff* and *ff*.

Handwritten musical score for the second system. The top staff is in treble clef and contains a melodic line with a dynamic marking of *ff* and a crescendo hairpin. The middle staff is in bass clef and contains a piano accompaniment with dynamic markings of *fp* and *ff*. The bottom two staves are in bass clef and contain a piano accompaniment with dynamic markings of *ff* and *ff*.

Handwritten musical score for the first system. The top staff is in treble clef and contains a melodic line with a large slur and a circled sharp sign. The bottom staff is in bass clef and contains a bass line with dynamic markings such as *fp* and *p*.

Handwritten musical score for the second system. The top staff is in treble clef and contains a melodic line with a circled number '6'. The bottom staff is in bass clef and contains a bass line with a circled *p* dynamic marking.

Handwritten musical score for guitar, consisting of two systems of staves. The first system features a treble clef staff with a key signature of one sharp (F#) and a common time signature (C). Below it are two guitar staves with various notes, accidentals, and dynamic markings like 'f' and 'p'. The second system includes a bass clef staff with a key signature of one flat (Bb) and a common time signature (C). Below it are two guitar staves with notes and accidentals. A circled number '7' is written on the right side of the page.

Handwritten musical score for the first system. It consists of five staves. The top staff is for strings. The second staff is for woodwinds (flute/oboe), showing notes with slurs and accents. The third staff is for woodwinds (clarinet/bassoon), also with notes and slurs. The fourth staff is for woodwinds (saxophone), with notes and slurs. The fifth staff is for woodwinds (trumpet), with notes and slurs. There are various musical notations such as slurs, accents, and dynamic markings throughout the system.

8

Handwritten musical score for the second system. It consists of five staves. The top staff is for strings. The second staff is for woodwinds (flute/oboe), showing notes with slurs and accents. The third staff is for woodwinds (clarinet/bassoon), with notes and slurs. The fourth staff is for woodwinds (saxophone), with notes and slurs. The fifth staff is for woodwinds (trumpet), with notes and slurs. There are various musical notations such as slurs, accents, and dynamic markings throughout the system.

größer mit... dir... (P)

Flöte! ganz her wie zur Anfang

Handwritten musical notation for the first staff, featuring a treble clef, a key signature of one sharp (F#), and a melody with various notes and rests. A circled number '9' is written at the beginning of the staff.

Handwritten musical notation for the second staff, featuring a treble clef, a key signature of one sharp (F#), and a melody with various notes and rests. The dynamic marking "fp =" is written at the beginning.

sist - em

Handwritten musical notation for the third staff, featuring a treble clef, a key signature of one sharp (F#), and a melody with various notes and rests. A circled number '9' is written at the end of the staff.

10

Handwritten musical notation for the fourth staff, featuring a treble clef, a key signature of one sharp (F#), and a melody with various notes and rests. The dynamic marking "fp" and the text "frei solo" are written at the beginning.

Handwritten musical notation for the fifth staff, featuring a treble clef, a key signature of one sharp (F#), and a melody with various notes and rests. The dynamic marking "pp" and the text "frei solo" are written at the beginning. A circled number "10" is written at the end of the staff.

frei solo

grosche (frei) (mit Tempo in Bergstein)

Flöte

f (frei beginnen)

steigend

11

Polka waltz

pp

pp<

pp

pp<

12

Handwritten musical score, first system. It consists of five staves. The top staff has a treble clef and contains a melodic line with notes and rests, including a fermata. The second staff has a bass clef and contains a complex, dense melodic line with many notes and slurs. The third staff has a treble clef and contains a few notes with a dynamic marking *p*. The fourth and fifth staves have bass clefs and contain notes with dynamic markings *ff* and *ff* respectively. There are various annotations and markings throughout the system.

Handwritten musical score, second system. It consists of five staves. The top staff has a treble clef and contains a melodic line with notes and rests, including a fermata. The second staff has a bass clef and contains a few notes with a dynamic marking *f*. The third staff has a treble clef and contains notes with a dynamic marking *f*. The fourth and fifth staves have bass clefs and contain notes with a dynamic marking *f*. There are various annotations and markings throughout the system.

73

Handwritten musical notation for the first system. The top staff is in treble clef and contains a melodic line with slurs and ties. The bottom staff is in bass clef and contains a bass line. Dynamic markings include *mf*.

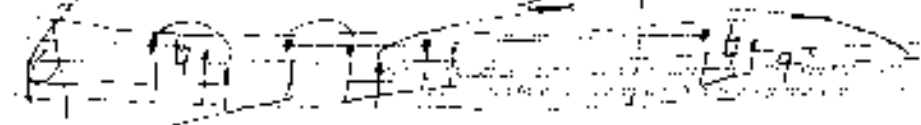
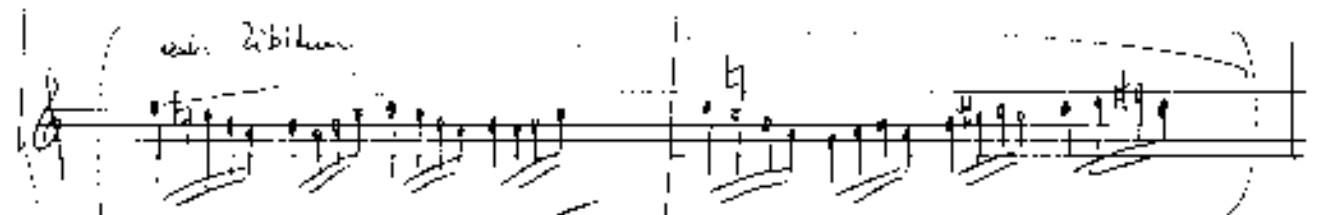
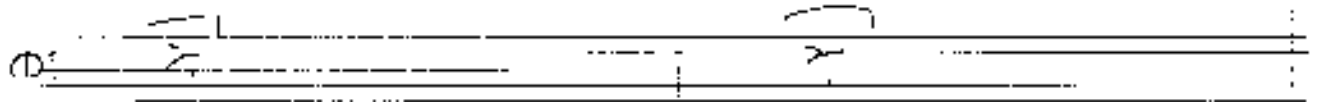
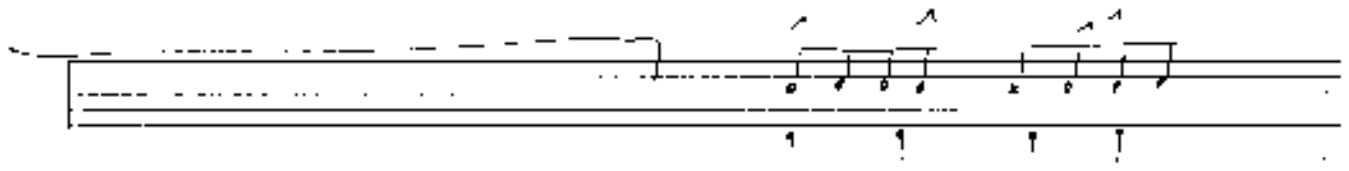
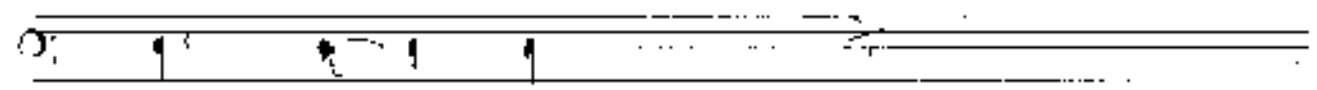
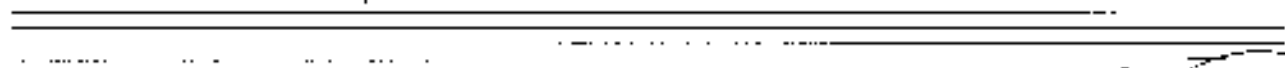
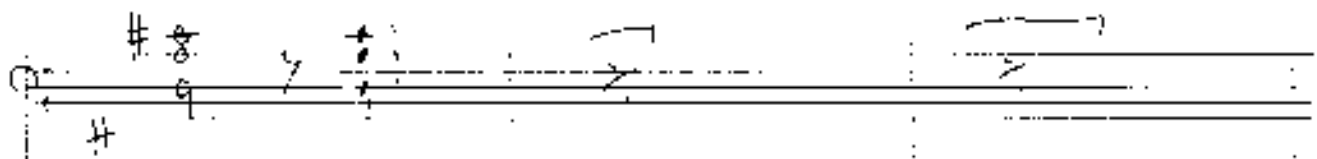
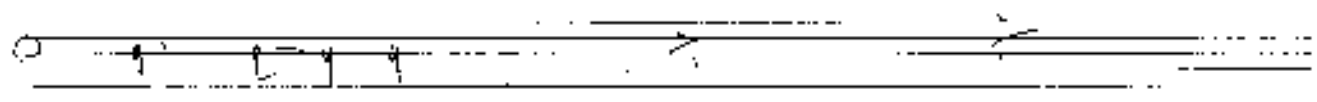
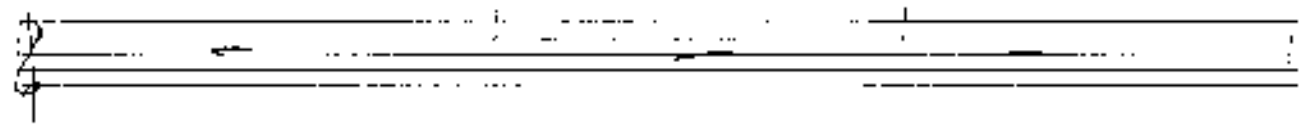
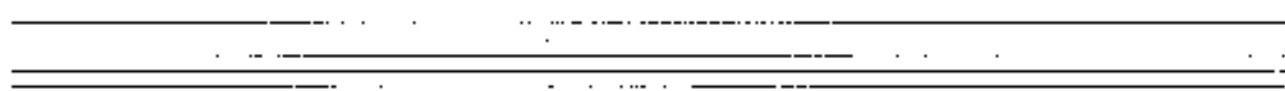
Handwritten musical notation for the second system, consisting of three staves. The top staff is in treble clef and contains notes with a slur and dynamic marking *mf*. The middle and bottom staves are in bass clef and contain notes with a slur and dynamic marking *mf*.

Handwritten musical notation for the third system. The top staff is in treble clef and contains a melodic line with slurs and ties. The bottom staff is in bass clef and contains a bass line. Dynamic markings include *mf*.

Handwritten musical notation for the fourth system, consisting of three staves. The top staff is in treble clef and contains notes with a slur and dynamic marking *f*. The middle and bottom staves are in bass clef and contain notes with a slur and dynamic marking *f*.

Solo

ad lib.



Flöte

Bar

Celli

Flöte

Bar

Celli

dim

dim

p

segue cresc.

Flöte

Bar

Celli

pp

pp

pp

pp

pp

15

große Flageoie

Handwritten musical notation for the first system. The top staff is in treble clef and contains a melodic line with notes, accidentals (sharps and naturals), and a fermata. The bottom staff is in bass clef and contains a bass line with notes and accidentals.

Handwritten musical notation for the second system. It consists of a grand staff with treble and bass clefs. The piano part includes a *p* dynamic marking and various chords and notes. The upper staff contains a melodic line with notes and accidentals.

Handwritten musical notation for the third system. It consists of a grand staff with treble and bass clefs. The piano part includes a *f* dynamic marking and a key signature change to B major (indicated by two sharps). The upper staff contains a melodic line with notes, accidentals, and a fermata.

Handwritten musical score for the first system. It consists of four staves. The top staff is in treble clef and contains a melodic line with several slurs and accents. The second staff is in bass clef and contains a bass line. The third and fourth staves are piano accompaniment staves, with the third staff in bass clef and the fourth in treble clef. Dynamics include 'f' and 'mf'. A circled 'Alb' is written at the end of the system.

Handwritten musical score for the second system. It consists of four staves. The top staff is in treble clef and contains a melodic line with several slurs and accents. The second staff is in bass clef and contains a bass line. The third and fourth staves are piano accompaniment staves, with the third staff in bass clef and the fourth in treble clef. Dynamics include 'f' and 'mf'.

Handwritten musical score for the first system. The top staff is in treble clef and contains a melodic line with various accidentals (sharps and naturals) and slurs. Below it are three piano accompaniment staves: the first is for the right hand, the second for the left hand, and the third is a bass line. The notation includes notes, rests, and dynamic markings.

Handwritten musical score for the second system. The top staff is in treble clef and contains a melodic line with various accidentals (sharps, naturals, and flats) and slurs. Below it are three piano accompaniment staves: the first is for the right hand, the second for the left hand, and the third is a bass line. The notation includes notes, rests, and dynamic markings.

Handwritten musical score for the first system. The top staff (treble clef) contains a melodic line with a key signature of one flat and a common time signature. The middle staff (bass clef) contains a bass line. The bottom staff (grand staff) contains chords. The system is marked with a common time signature.

Handwritten musical score for the second system. The top staff (treble clef) contains a melodic line with a key signature of one flat and a common time signature. The middle staff (bass clef) contains a bass line. The bottom staff (grand staff) contains chords. The system is marked with a common time signature. There are circled numbers 47, 48, and 49 above the treble staff.

20

21

haben - mit größter Eiferung bis [22]

folgendes Pils

gebres mit

side break (Flour Bag)

Handwritten musical score for the first system, measures 21-23. The score is written on four staves. The top staff is a treble clef with a key signature of one sharp (F#). The second staff is a bass clef with a key signature of one sharp (F#). The third staff is a bass clef with a key signature of one sharp (F#). The bottom staff is a bass clef with a key signature of one sharp (F#). The music consists of a melody in the top staff, a bass line in the second staff, and a bass line in the third staff. The bottom staff contains a complex bass line with many notes and accidentals. There are some handwritten annotations, including a circled '24' above the first staff and some numbers like '93' and '213' below the bottom staff.

Handwritten musical score for the second system, measures 24-27. The score is written on four staves. The top staff is a treble clef with a key signature of one sharp (F#). The second staff is a bass clef with a key signature of one sharp (F#). The third staff is a bass clef with a key signature of one sharp (F#). The bottom staff is a bass clef with a key signature of one sharp (F#). The music consists of a melody in the top staff, a bass line in the second staff, and a bass line in the third staff. The bottom staff contains a complex bass line with many notes and accidentals. There are some handwritten annotations, including a circled '24' above the first staff and some numbers like '93' and '213' below the bottom staff.

großes mit

Handwritten musical score for 'großes mit'. The score consists of five systems of staves. The first system includes a treble clef staff with a melodic line and a bass clef staff with a bass line. The second system continues the melodic and bass lines with various rhythmic markings and accidentals. The third system shows a continuation of the bass line with some rests. The fourth system features a treble clef staff with a melodic line and a bass clef staff with a bass line. The fifth system shows a continuation of the bass line with some rests.

gr. sch. (dün.)

Handwritten musical score for 'gr. sch. (dün.)'. The score consists of five systems of staves. The first system includes a treble clef staff with a melodic line and a bass clef staff with a bass line. The second system continues the melodic and bass lines with various rhythmic markings and accidentals. The third system shows a continuation of the bass line with some rests. The fourth system features a treble clef staff with a melodic line and a bass clef staff with a bass line. The fifth system shows a continuation of the bass line with some rests.

☒ CODA

Handwritten musical score for the CODA section. The top staff is in treble clef and contains several measures of music with notes, rests, and dynamic markings. The bottom four staves are in bass clef and are mostly empty, with some notes and rests in the final measure. There are circled numbers (1) and (2) above the final measures of the top staff.

Tempo: molto rubato (Slow)

Handwritten musical score for the section marked 'Tempo: molto rubato (Slow)'. The top staff is in treble clef and contains several measures of music with notes, rests, and dynamic markings. The bottom four staves are in bass clef and contain notes and rests. There are circled numbers (1) and (2) above the final measures of the top staff.

Handwritten musical notation for the first system. The top staff is in treble clef and contains a complex melodic line with many notes and slurs. The bottom staff is in bass clef and contains a simple accompaniment line with fewer notes.

Handwritten musical notation for the second system, showing a bass clef staff with a few notes.

Handwritten musical notation for the third system, featuring a grand staff with piano and forte markings. The top staff is in treble clef and the bottom staff is in bass clef. The notation includes slurs and dynamic markings like *pp* and *ff*.

Handwritten musical notation for the fourth system, featuring a treble clef staff with a complex melodic line.

Handwritten musical notation for the fifth system, showing a bass clef staff with a few notes.

Handwritten musical notation for the sixth system, featuring a grand staff with various markings. The top staff is in treble clef and the bottom staff is in bass clef. The notation includes slurs and dynamic markings like *pp* and *ff*.

Handwritten musical score for five staves. The top staff has a treble clef and contains a melodic line with notes and rests. The second staff has a bass clef and contains a bass line. The third staff has a bass clef and contains a bass line. The fourth staff has a bass clef and contains a bass line. The fifth staff has a bass clef and contains a bass line. The score is divided into two measures by a vertical bar line. The first measure is marked with 'V' and 'C#' below the notes. The second measure is marked with 'free', 'C#', 'LUNGA', and 'V' below the notes. The word 'FINE' is written in a box at the top right. Dynamics include 'ppp' and 'ppp'.

Handwritten musical score for five staves, mostly crossed out with a large 'X'. The staves are labeled on the right as 'C+B', 'B', 'A', and 'V'. The bottom staff is labeled 'Kod'. The score is divided into two measures by a vertical bar line. The first measure contains notes and rests. The second measure contains notes and rests. The word 'Kod' is written at the bottom right.