



Notenheft



7 Teile für Orgel (SWV 910)

1972

Adolf Scherbaum

7 Teile für Orgel (SWV 911)

über ein Thema v. J. S. Bach

1972

Adolf Scherbaum

Andante

I.

Handwritten musical notation for the first system. The treble clef staff contains a sequence of notes: G4, A4, B4, C5, B4, A4, G4, F4, E4, D4, C4. The bass clef staff contains notes: C3, D3, E3, F3, G3, A3, B3, C4. A large slur covers the entire system. A '4' is written in the bass clef staff, and a '7' is written above the treble clef staff.

Handwritten musical notation for the second system. The treble clef staff contains notes: G4, A4, B4, C5, B4, A4, G4, F4, E4, D4, C4. The bass clef staff contains notes: C3, D3, E3, F3, G3, A3, B3, C4. A large slur covers the entire system.

Handwritten musical notation for the third system. The treble clef staff contains notes: G4, A4, B4, C5, B4, A4, G4, F4, E4, D4, C4. The bass clef staff contains notes: C3, D3, E3, F3, G3, A3, B3, C4. A large slur covers the entire system.

Handwritten musical notation for the first system. The treble clef staff contains a melodic line with notes G4, A4, B4, and C5, with accidentals # and b. The bass clef staff contains a bass line with notes G3, A3, B3, and C4, with accidentals # and b. A large slur spans across both staves.

Handwritten musical notation for the second system. The treble clef staff contains notes G4, A4, B4, and C5 with accidentals # and b. The bass clef staff contains notes G3, A3, B3, and C4 with accidentals # and b. A large slur spans across both staves.

Handwritten musical notation for the third system. The treble clef staff contains notes G4, A4, B4, and C5 with accidentals # and b. The bass clef staff contains notes G3, A3, B3, and C4 with accidentals # and b. A large slur spans across both staves. The system concludes with the instruction "D.C." and "Fine".

II.

sehr ruhige Andite

Handwritten musical notation for the first system. It consists of two staves. The top staff is in treble clef with a 4/8 time signature. The bottom staff is in bass clef with an 8/8 time signature. The music is marked 'pp' (pianissimo). The first measure contains a half note G#4 and a half note A#4. The second measure contains a half note B#4 and a half note C5. The third measure contains a half note D5 and a half note E5. The fourth measure contains a half note F#5 and a half note G#5. The fifth measure contains a half note A5 and a half note B5. The sixth measure contains a half note C6 and a half note D6. The seventh measure contains a half note E6 and a half note F#6. The eighth measure contains a half note G#6 and a half note A6. The piece ends with a double bar line.

Handwritten musical notation for the second system. It consists of two staves. The top staff is in treble clef with a 4/8 time signature. The bottom staff is in bass clef with an 8/8 time signature. The music is marked 'pp' (pianissimo). The first measure contains a half note G#4 and a half note A#4. The second measure contains a half note B#4 and a half note C5. The third measure contains a half note D5 and a half note E5. The fourth measure contains a half note F#5 and a half note G#5. The fifth measure contains a half note A5 and a half note B5. The sixth measure contains a half note C6 and a half note D6. The seventh measure contains a half note E6 and a half note F#6. The eighth measure contains a half note G#6 and a half note A6. The piece ends with a double bar line.

Handwritten musical notation for the third system. It consists of two staves. The top staff is in treble clef with a 4/8 time signature. The bottom staff is in bass clef with an 8/8 time signature. The music is marked 'pp' (pianissimo). The first measure contains a half note G#4 and a half note A#4. The second measure contains a half note B#4 and a half note C5. The third measure contains a half note D5 and a half note E5. The fourth measure contains a half note F#5 and a half note G#5. The fifth measure contains a half note A5 and a half note B5. The sixth measure contains a half note C6 and a half note D6. The seventh measure contains a half note E6 and a half note F#6. The eighth measure contains a half note G#6 and a half note A6. The piece ends with a double bar line.



Handwritten musical notation on two staves. The top staff has a treble clef and contains a whole note chord with a sharp sign. The bottom staff has a bass clef and contains a melodic line with various accidentals (sharps and flats) and a double bar line.

Handwritten musical notation on two staves. The top staff has a treble clef and contains a series of chords with accidentals. The bottom staff has a bass clef and contains a melodic line with a sharp sign and a double bar line.

(2. Zeit)

Handwritten musical notation on two staves. The top staff has a treble clef and contains a melodic line with a double bar line. The bottom staff has a bass clef and contains a melodic line with various accidentals and a double bar line.

Handwritten musical notation on two staves. The top staff has a treble clef and contains a series of notes with a double bar line. The bottom staff has a bass clef and contains a series of notes with a double bar line.

III.

Presto

Handwritten musical notation for the first system. The top staff is in treble clef with a 12/8 time signature and a key signature of one sharp (F#). It contains a melodic line with eighth notes and slurs. The bottom staff is in bass clef with a key signature of one flat (Bb) and contains a bass line with dotted notes and slurs.

Handwritten musical notation for the second system. The top staff is in treble clef with a 12/8 time signature and a key signature of one sharp (F#). It contains a melodic line with eighth notes and slurs. The bottom staff is in bass clef with a key signature of one flat (Bb) and contains a bass line with dotted notes and slurs.

Handwritten musical notation for the third system. The top staff is in treble clef with a 12/8 time signature and a key signature of one flat (Bb). It contains a melodic line with eighth notes and slurs. The bottom staff is in bass clef with a key signature of one flat (Bb) and contains a bass line with dotted notes and slurs.

Handwritten musical notation for the first system. The top staff is in treble clef and contains a melodic line with various notes and accidentals. The bottom staff is in bass clef and contains a bass line with notes and dynamic markings 'p.' and 'q.'.

Handwritten musical notation for the second system. The top staff continues the melodic line, and the bottom staff continues the bass line with dynamic markings 'p.' and 'q.'.

Handwritten musical notation for the third system. The top staff ends with a double bar line and a box containing '24' and 'G.P.'. The bottom staff continues the bass line with dynamic markings 'p.' and 'q.'.

Handwritten musical notation for the fourth system. The top staff contains notes and accidentals, with the word 'breit' written above. The bottom staff contains notes and accidentals, with a circled cross symbol (⊕) written to the left.



IV.

so ruhig als möglich

Handwritten musical notation for the first system, measures 1-4. It features a treble and bass clef with a common time signature. The music is written in a key with one sharp (F#) and includes a circled 'pp' dynamic marking. The notes are: Treble: F#4, G#4, A4, Bb4; Bass: F#3, G#3, A3, Bb3.

Handwritten musical notation for the second system, measures 5-8. It continues the piece with treble and bass clefs. The notes are: Treble: Bb4, A4, G#4, F#4; Bass: Bb3, A3, G#3, F#3.

Handwritten musical notation for the third system, measures 9-12. It continues the piece with treble and bass clefs. The notes are: Treble: F#4, G#4, A4, Bb4; Bass: F#3, G#3, A3, Bb3.

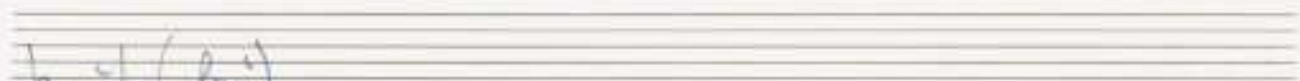
Handwritten musical notation for the first system. The treble clef staff contains a sequence of notes with various accidentals:  $\sharp$ ,  $\flat$ ,  $\sharp$ ,  $\flat$ ,  $\sharp$ ,  $\flat$ ,  $\sharp$ ,  $\flat$ ,  $\sharp$ ,  $\flat$ ,  $\sharp$ ,  $\flat$ ,  $\sharp$ ,  $\flat$ . The bass clef staff contains notes with accidentals:  $\sharp$ ,  $\sharp$ ,  $\flat$ ,  $\flat$ ,  $\sharp$ ,  $\sharp$ ,  $\flat$ .

Handwritten musical notation for the second system. The treble clef staff contains notes with accidentals:  $\flat$ ,  $\flat$ ,  $\sharp$ ,  $\flat$ ,  $\flat$ ,  $\flat$ ,  $\flat$ ,  $\flat$ . The bass clef staff contains notes with accidentals:  $\flat$ ,  $\flat$ ,  $\flat$ ,  $\flat$ ,  $\flat$ ,  $\flat$ .

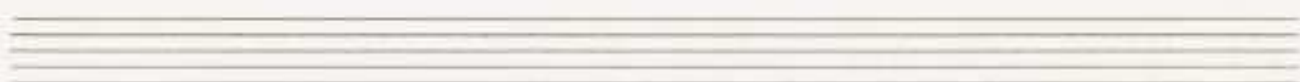
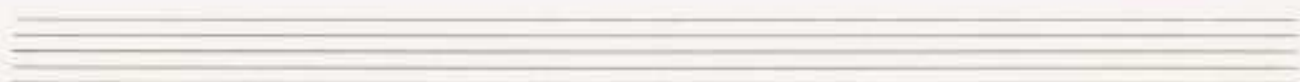
(2. + qu. rit. . . ) und n

Handwritten musical notation for the third system. The treble clef staff contains notes with accidentals:  $\sharp$ ,  $\sharp$ ,  $\sharp$ ,  $\flat$ ,  $\sharp$ . The bass clef staff contains notes with accidentals:  $\flat$ ,  $\sharp$ ,  $\sharp$ ,  $\flat$ . The system ends with a double bar line and a fermata.

D.C.



breit (frei)



Handwritten musical notation on a grand staff. The left hand part includes a treble clef, a 6/4 time signature, and a key signature of one sharp (F#). The right hand part includes a treble clef and a key signature of one sharp (F#). Both parts feature a series of notes with a bracket above them, and a large brace underneath the entire system.

Handwritten musical notation on a grand staff. The left hand part includes a treble clef and a key signature of one sharp (F#). The right hand part includes a treble clef and a key signature of one sharp (F#). Both parts feature a series of notes with a bracket above them, and a large brace underneath the entire system.

Handwritten musical notation on a grand staff. The left hand part includes a treble clef, a 4/4 time signature, and a key signature of one sharp (F#). The right hand part includes a treble clef and a key signature of one sharp (F#). Both parts feature a series of notes with a bracket above them, and a large brace underneath the entire system. The notation includes various accidentals and a final measure with a fermata.

Handwritten musical notation on a grand staff. The left hand part includes a treble clef and a key signature of one sharp (F#). The right hand part includes a treble clef and a key signature of one sharp (F#). Both parts feature a series of notes with a bracket above them, and a large brace underneath the entire system. The notation includes various accidentals and a final measure with a fermata.



III, VI.

Prata (beim Dec. # bleiben)

Handwritten musical notation for the first system. It consists of two staves. The upper staff is in treble clef and contains a sequence of notes with accidentals (sharps and naturals) and slurs. The lower staff is in bass clef and contains corresponding notes and accidentals. A circled 'p' is written in the left margin. A large slur arches over the entire system.

Handwritten musical notation for the second system. It consists of two staves. The upper staff is in treble clef and contains notes with accidentals and slurs. The lower staff is in bass clef and contains notes and accidentals. A large slur arches over the entire system.

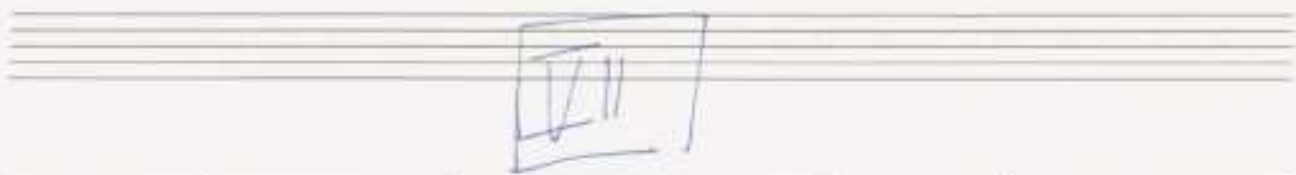
Handwritten musical notation for the third system. It consists of two staves. The upper staff is in treble clef and contains notes with accidentals and slurs. The lower staff is in bass clef and contains notes and accidentals. A large slur arches over the entire system.

Handwritten musical notation for the first system. The treble clef staff contains notes with accidentals (sharps) and slurs. The bass clef staff contains notes with accidentals (sharps). A large slur spans across both staves.

Handwritten musical notation for the second system. The treble clef staff contains notes with accidentals (sharps) and slurs. The bass clef staff contains notes with accidentals (sharps). A large slur spans across both staves.

Handwritten musical notation for the third system. The treble clef staff contains notes with accidentals (sharps and flats) and slurs. The bass clef staff contains notes with accidentals (sharps). A large slur spans across both staves. On the right side, there are handwritten notes: "2. +", "D.C.", "al", and a treble clef symbol.

Handwritten musical notation for the fourth system. The treble clef staff contains notes with accidentals (sharps) and slurs. The bass clef staff contains notes with accidentals (sharps). A large slur spans across both staves. Below the bass staff, there are handwritten notes: "#9.", "#9.", "9.", and "9.".



Lento (ppp — ständig cresc. bis ffff)

Handwritten musical score for the first system. It features two staves: a treble clef staff and a bass clef staff. The treble staff begins with a circled 'pppp' dynamic marking. The music consists of half notes and quarter notes, with slurs and ties. The bass staff includes a circled '4' and the text 'F. Pedal' below it. The key signature has one sharp (F#).

*sempre crescendo*

Handwritten musical score for the second system, continuing the two-staff format. It features slurs and ties across measures, with a circled 'f' dynamic marking above the treble staff in the final measure. The key signature remains one sharp.

Handwritten musical score for the third system. It continues the two-staff format. A circled 'ppp' dynamic marking is present at the beginning of the system. The notation includes slurs and ties. The key signature remains one sharp.



Handwritten musical notation for the first system. The treble staff contains notes: G4 (flat), A4 (flat), B4 (flat), C5 (flat), D5 (flat), E5 (flat), F5 (flat), G5 (flat). The bass staff contains notes: G3 (flat), A3 (flat), B3 (flat), C4 (flat), D4 (flat), E4 (flat), F4 (flat), G4 (flat). The system is divided into four measures by vertical bar lines.

Handwritten musical notation for the second system. The treble staff contains notes: G4 (flat), A4 (flat), B4 (flat), C5 (flat), D5 (flat), E5 (flat), F5 (flat), G5 (flat). The bass staff contains notes: G3 (flat), A3 (flat), B3 (flat), C4 (flat), D4 (flat), E4 (flat), F4 (flat), G4 (flat). A circled **pp** dynamic marking is present at the beginning of the system. The system is divided into four measures.

Handwritten musical notation for the third system. The treble staff contains notes: G4 (flat), A4 (flat), B4 (flat), C5 (flat), D5 (flat), E5 (flat), F5 (flat), G5 (flat). The bass staff contains notes: G3 (flat), A3 (flat), B3 (flat), C4 (flat), D4 (flat), E4 (flat), F4 (flat), G4 (flat). The system is divided into four measures.

Handwritten musical notation for the fourth system. The treble staff contains notes: G4 (flat), A4 (flat), B4 (flat), C5 (flat), D5 (flat), E5 (flat), F5 (flat), G5 (flat). The bass staff contains notes: G3 (flat), A3 (flat), B3 (flat), C4 (flat), D4 (flat), E4 (flat), F4 (flat), G4 (flat). A circled **p** dynamic marking is present at the beginning of the system. The system is divided into four measures.



Handwritten musical notation for the first system, featuring two staves with notes, rests, and slurs.

Handwritten musical notation for the second system, featuring two staves with notes, rests, and slurs. A circled **mf** dynamic marking is present.

Handwritten musical notation for the third system, featuring two staves with notes, rests, and slurs. A circled **f** dynamic marking is present.

Handwritten musical notation for the first system. The treble clef staff contains notes with accidentals:  $b d' \cdot$ ,  $d' \cdot$ ,  $b g \cdot$ , and  $b \frac{b}{a} \cdot$ . The bass clef staff contains notes with accidentals:  $b \cdot$ ,  $a \cdot$ ,  $\# a \cdot$ , and  $\# a \cdot$ . A circled  $\#$  is written below the bass clef staff.

Handwritten musical notation for the second system. The treble clef staff contains notes with accidentals:  $b \frac{b}{a} \cdot$ ,  $b \frac{b}{a} \cdot$ , and  $b \frac{b}{a} \cdot$ . The bass clef staff contains notes with accidentals:  $a \cdot$ ,  $b \cdot$ , and  $a \cdot$ . A circled  $ttt$  is written below the bass clef staff. The word *rit.* is written below the bass clef staff with a dashed line.

Handwritten musical notation for the third system. The treble clef staff contains notes with accidentals:  $b \frac{b}{a} \cdot$ ,  $b \frac{b}{a} \cdot$ , and  $b \frac{b}{a} \cdot$ . The bass clef staff contains notes with accidentals:  $\# a \cdot$  and  $a \cdot$ . A circled  $ttt$  is written below the bass clef staff. A large arrow points to the right at the end of the system.

zwei (perante)

zwei

zwei beginnen (accel.)

zwei (rubato)

trioso

Handwritten musical notation on two staves. The top staff is labeled "gitarra" and the bottom staff is labeled "bateria". The notation includes various notes, accidentals (sharps and flats), and dynamic markings such as "p" (piano) and "pp" (pianissimo). There are also some handwritten annotations like "33p" and "33p".

Handwritten musical notation on two staves. The top staff is labeled "largo" and the bottom staff is labeled "Mezzo". The notation includes notes, accidentals, and dynamic markings like "p" and "pp". There is a large, sweeping line drawn across the bottom staff.