

Notenheft

7 Teile für Orgel (SWV 910)

1972

Adolf Scherbaum

7 Teile für Orgel (SWV 911)

über ein Thema v. J. S. Bach

1972

Adolf Scherbaum

out

I.

Handwritten musical notation for the first system. The treble clef is on the top staff. The time signature is 6/8. The melody consists of quarter and eighth notes with various accidentals (sharps, flats, naturals). The bass staff contains a few notes, including a 4/8 time signature and a sharp sign.

Handwritten musical notation for the second system. The treble clef is on the top staff. The melody continues with quarter and eighth notes and accidentals. The bass staff contains notes and accidentals, including a sharp sign.

Handwritten musical notation for the third system. The treble clef is on the top staff. The melody continues with quarter and eighth notes and accidentals. The bass staff contains notes and accidentals, including a sharp sign and a fermata-like symbol.

II.

sehr ruhige Achtel

Handwritten musical notation for the first system. The treble staff contains a few notes with accidentals and a fermata. The bass staff contains a melodic line with various accidentals and a fermata.

Handwritten musical notation for the second system. The treble staff contains a melodic line with many notes and accidentals. The bass staff contains a few notes with accidentals.

(Zweit)

Handwritten musical notation for the third system. The treble staff contains a melodic line with many notes and accidentals. The bass staff contains a melodic line with many notes and accidentals.

Handwritten musical notation for the fourth system. The treble staff contains a few notes with accidentals and a fermata. The bass staff contains a few notes with accidentals and a fermata.

III.

Presto

Handwritten musical notation for the first system, featuring a treble clef, a 12/8 time signature, and a bass clef. The notation includes notes, slurs, and dynamic markings such as *p* and *f*.

Handwritten musical notation for the second system, featuring a treble clef, a 7/8 time signature, and a bass clef. The notation includes notes, slurs, and dynamic markings such as *p* and *f*.

Handwritten musical notation for the third system, featuring a treble clef, a 6/8 time signature, and a bass clef. The notation includes notes, slurs, and dynamic markings such as *p* and *f*.

Handwritten musical score for the first system. The top staff is in treble clef and contains a melodic line with a slur over the first two measures and a fermata over the last two. The bottom staff is in bass clef and contains a harmonic line with a slur over the first two measures and a fermata over the last two. A piano (*p.*) dynamic marking is present below the bass staff.

Handwritten musical score for the second system. The top staff is in treble clef and contains a melodic line with a slur over the first two measures and a fermata over the last two. The bottom staff is in bass clef and contains a harmonic line with a slur over the first two measures and a fermata over the last two. A piano (*p.*) dynamic marking is present below the bass staff.

Handwritten musical score for the third system. The top staff is in treble clef and contains a melodic line with a slur over the first two measures and a fermata over the last two. The bottom staff is in bass clef and contains a harmonic line with a slur over the first two measures and a fermata over the last two. A piano (*p.*) dynamic marking is present below the bass staff. The system concludes with a double bar line and a $2+$ measure rest.

Handwritten musical score for the fourth system. The top staff is in treble clef and contains a melodic line with a slur over the first two measures and a fermata over the last two. The bottom staff is in bass clef and contains a harmonic line with a slur over the first two measures and a fermata over the last two. A piano (*p.*) dynamic marking is present below the bass staff. The system concludes with a double bar line and a fermata.

IV.

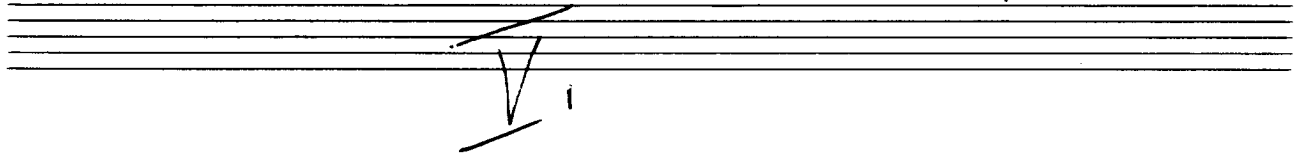
so ruhig als möglich

Handwritten musical notation for the first system. The treble staff contains notes with accidentals: G#4, A#4, B4, C5, D5, E5, F#5, G#5. The bass staff contains notes with accidentals: G#3, A#3, B3, C4, D4, E4, F#4, G#4. A circled 'pp' dynamic marking is present in the bass staff. The system is enclosed in a large slur.

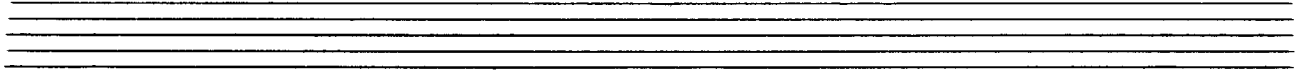
Handwritten musical notation for the second system. The treble staff contains notes with accidentals: G#4, A#4, B4, C5, D5, E5, F#5, G#5. The bass staff contains notes with accidentals: G#3, A#3, B3, C4, D4, E4, F#4, G#4. The system is enclosed in a large slur.

Handwritten musical notation for the third system. The treble staff contains notes with accidentals: G#4, A#4, B4, C5, D5, E5, F#5, G#5. The bass staff contains notes with accidentals: G#3, A#3, B3, C4, D4, E4, F#4, G#4. The system is enclosed in a large slur.

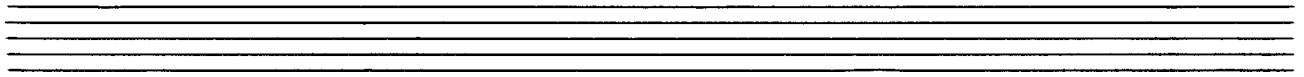
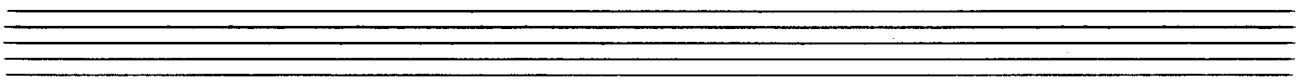
(2. + gr. rit. . .) und rit



breit (frei)



(2te x gut) coda ♯



Handwritten musical notation on two staves. The top staff has a treble clef and a 6/4 time signature. It contains several notes with accidentals (sharps) and a bracketed sequence of notes. The bottom staff has a bass clef and contains a few notes with accidentals and a large bracket underneath.

Handwritten musical notation on two staves. The top staff has a treble clef and contains notes with accidentals and a bracketed sequence. The bottom staff has a bass clef and contains notes with accidentals and a large bracket underneath.

Handwritten musical notation on two staves. The top staff has a treble clef and a 4/8 time signature. It contains notes with accidentals and a large bracket underneath. The bottom staff has a bass clef and a 4/4 time signature, containing notes with accidentals and a large bracket underneath.

Handwritten musical notation on two staves. The top staff has a treble clef and contains notes with accidentals and a bracketed sequence. The bottom staff has a bass clef and contains notes with accidentals and a large bracket underneath.

III, VI.

Prata (beim Dc. # bleiben)

Handwritten musical notation for the first system. It consists of two staves. The upper staff is in treble clef and contains a series of notes with accidentals (sharps and naturals). The lower staff is in bass clef and contains a series of notes, some with accidentals. A circled 'p' is written in the left margin. A large slur covers the entire system.

Handwritten musical notation for the second system. It consists of two staves. The upper staff is in treble clef and contains a series of notes with accidentals. The lower staff is in bass clef and contains a series of notes, some with accidentals. A large slur covers the entire system.

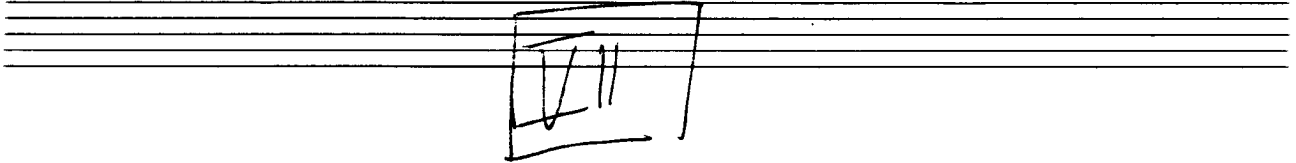
Handwritten musical notation for the third system. It consists of two staves. The upper staff is in treble clef and contains a series of notes with accidentals. The lower staff is in bass clef and contains a series of notes, some with accidentals. A double bar line is at the end of the system. A large slur covers the entire system.

Handwritten musical notation for the first system. It consists of two staves: a treble clef staff on top and a bass clef staff on the bottom. The treble staff contains a series of notes with sharp accidentals, some of which are beamed together. A large slur arches over the entire system. The bass staff contains notes with sharp accidentals, some beamed together, and a double bar line.

Handwritten musical notation for the second system. It consists of two staves: a treble clef staff on top and a bass clef staff on the bottom. The treble staff contains notes with sharp accidentals, some beamed together. A large slur arches over the entire system. The bass staff contains notes with sharp accidentals, some beamed together, and a double bar line.

Handwritten musical notation for the third system. It consists of two staves: a treble clef staff on top and a bass clef staff on the bottom. The treble staff contains notes with sharp and flat accidentals, some beamed together. A large slur arches over the entire system. The bass staff contains notes with sharp accidentals, some beamed together, and a double bar line. To the right of the system, there is a vertical list of handwritten notes: "2. +", "D. C.", "al", and a circled symbol.

Handwritten musical notation for the fourth system. It consists of two staves: a treble clef staff on top and a bass clef staff on the bottom. The treble staff contains notes with sharp accidentals, some beamed together. A large slur arches over the entire system. The bass staff contains notes with sharp accidentals, some beamed together, and a double bar line. Below the staves, there are handwritten notes: "# 9.", "# 9.", "9.", and "9." with a large slur underneath them.



lento (ppp — ständing cresc. bis ffff)

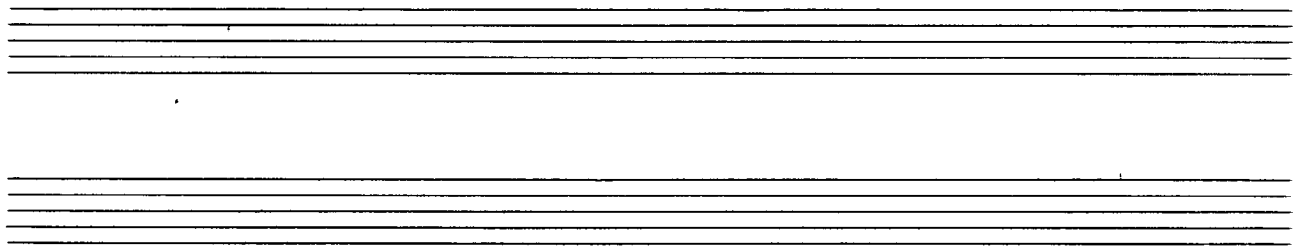
scarp. cresc.

Handwritten musical notation for the first system. The treble clef staff contains notes with accidentals: $b d$, d , d , d . The bass clef staff contains notes with accidentals: $\# d$, d , d , $\# d$. The system is divided into four measures by vertical bar lines.

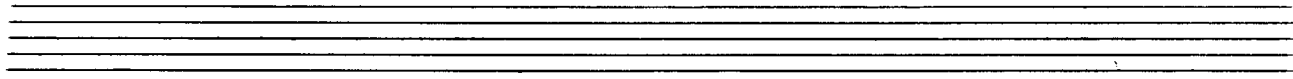
Handwritten musical notation for the second system. The treble clef staff contains notes with accidentals: $b d$, d , d , $b b d$. The bass clef staff contains notes with accidentals: $\# d$, $\# d$, $\# d$, $\# d$. A circled pp dynamic marking is present in the first measure of the bass staff. The system is divided into four measures.

Handwritten musical notation for the third system. The treble clef staff contains notes with accidentals: $b b d$, $b b d$, d , $b b d$. The bass clef staff contains notes with accidentals: $\# d$, $\# d$, d , d . The system is divided into four measures.

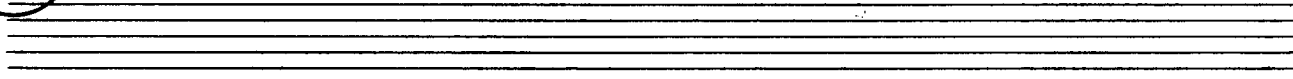
Handwritten musical notation for the fourth system. The treble clef staff contains notes with accidentals: $b b d$, $b d$, d . The bass clef staff contains notes with accidentals: d , d . A circled p dynamic marking is present in the first measure of the bass staff. The system is divided into four measures.



Handwritten musical notation for the first system. The upper staff contains a melodic line with notes $b^{\flat}g$, d , $b^{\flat}d$, and d , each with a slur above it. The lower staff contains a bass line with notes b , $b^{\flat}g$, $b^{\flat}g$, b , $b^{\flat}g$, $b^{\flat}g$, b , $b^{\flat}g$, $b^{\flat}g$, b , $\#f$, $\#f$.



Handwritten musical notation for the second system. The upper staff contains a melodic line with notes $b^{\flat}g$, d , d , and $\#f$, each with a slur above it. The lower staff contains a bass line with notes b , $b^{\flat}g$, $b^{\flat}g$, b , $b^{\flat}g$, $b^{\flat}g$, b , $b^{\flat}g$, $b^{\flat}g$. A circled mf dynamic marking is present at the beginning of the system.



Handwritten musical notation for the third system. The upper staff contains a melodic line with notes $\#f$, d , d , $b^{\flat}g$, and d , each with a slur above it. The lower staff contains a bass line with notes b , $b^{\flat}g$, $b^{\flat}g$, b , $b^{\flat}g$, $b^{\flat}g$, b , $b^{\flat}g$, $b^{\flat}g$, b , $b^{\flat}g$, $b^{\flat}g$. A circled f dynamic marking is present at the beginning of the system.



Handwritten musical notation for system 1. It consists of two staves. The upper staff has a treble clef and contains a melodic line with notes and accidentals (b, d, #) and slurs. The lower staff has a bass clef and contains a bass line with notes and accidentals. A circled number '77' is written in the left margin.

Handwritten musical notation for system 2. It consists of two staves. The upper staff has a treble clef and contains a melodic line with notes and accidentals (b, #) and slurs. The lower staff has a bass clef and contains a bass line with notes and accidentals. A circled number '777' is written in the left margin. The word 'rit.' is written below the lower staff with a dashed line extending to the right.

Handwritten musical notation for system 3. It consists of two staves. The upper staff has a treble clef and contains a melodic line with notes and accidentals (b, #) and slurs. The lower staff has a bass clef and contains a bass line with notes and accidentals. A circled number '7777' is written in the left margin. The system ends with a double bar line and a fermata.

Four empty musical staves at the bottom of the page.

der (pesante)

breit

breit beginnen (accel.)

frei (rubato)

rasch

ritornello

breite

lunga

1972