

L.v. BEETHOVEN



W.A. MOZART



# NOTENHEFT

F. SCHUBERT



J. HAYDN



J. STRAUSS



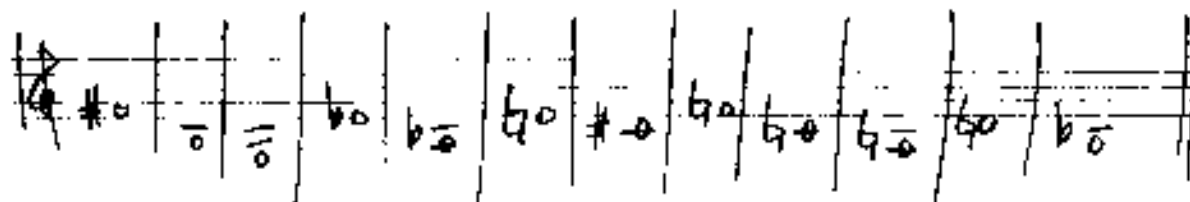
Studie in B 1972

für Solo Flöte (Altflöte)

Piano

Schlagbass und Schlagwerk

Adolf Scherbaum





Handwritten musical score for the first system. The top staff is in treble clef, one flat key signature, and 9/8 time. It contains a melody line with a slur over the first two measures and a fermata over the second measure. The second staff has a treble clef and contains a series of notes with slurs. The third staff has a bass clef and contains a series of notes with slurs. The fourth staff has a bass clef and contains a series of notes with slurs.

Handwritten musical score for the second system. The top staff is in treble clef, one flat key signature, and 9/8 time. It contains a melody line with a slur over the first two measures and a fermata over the second measure. The second staff has a treble clef and contains a series of notes with slurs. The third staff has a bass clef and contains a series of notes with slurs. The fourth staff has a bass clef and contains a series of notes with slurs.

Handwritten musical score for the first system. It consists of three staves. The top staff is a treble clef with a key signature of one flat (B-flat major) and a 3/4 time signature. It contains a melody line with slurs and accents. The middle staff is a bass clef with notes and rests. The bottom staff is a piano accompaniment with chords and a rhythmic pattern of eighth notes. The system is divided into three measures.

Handwritten musical score for the second system. It consists of three staves. The top staff is a treble clef with a key signature of two sharps (D major) and a 3/4 time signature. It contains a melody line with slurs and accents. The middle staff is a bass clef with notes and rests. The bottom staff is a piano accompaniment with chords and a rhythmic pattern of eighth notes. The system is divided into three measures.

Handwritten musical notation on a five-line staff. The notation includes notes, rests, and dynamic markings. A circled 'p' is written on the left side of the staff. The notes are written in a cursive, handwritten style.

Handwritten musical notation on a five-line staff, continuing from the first system. It features notes, rests, and dynamic markings. A circled 'p' is written on the left side of the staff. The notation is consistent with the first system.

Handwritten musical score for the first system. The notation includes a treble clef, a key signature of three sharps (F#, C#, G#), and a common time signature. The score is divided into three staves. The top staff contains a melodic line with a fermata over the final note. The middle staff contains a bass line with a triplet of eighth notes. The bottom staff contains a piano accompaniment with slurs and accents. The dynamic marking 'f' is present in the first and third staves.

Handwritten musical score for the second system. The notation includes a treble clef, a key signature of three sharps (F#, C#, G#), and a common time signature. The score is divided into three staves. The top staff contains a melodic line with a fermata over the final note. The middle staff contains a bass line with a triplet of eighth notes. The bottom staff contains a piano accompaniment with slurs and accents. The dynamic marking 'p' is present in the first and third staves.

Handwritten musical score for the first system. The top staff is in treble clef and contains several measures of music with notes, accidentals (sharps and flats), and slurs. Below it are three bass clef staves. The first bass staff has a circled 'P' and some notes. The second bass staff has a circled 'P' and some notes. The third bass staff has a circled 'P' and some notes. There are also some handwritten markings like 'b' and 'p'.

Handwritten musical score for the second system. The top staff is in treble clef and contains several measures of music with notes, accidentals (sharps and flats), and slurs. Below it are three bass clef staves. The first bass staff has a circled 'P' and some notes. The second bass staff has a circled 'P' and some notes. The third bass staff has a circled 'P' and some notes. There are also some handwritten markings like 'b' and 'p'.



Handwritten musical score for the first system, consisting of three staves. The top staff contains a melodic line with various notes and rests, including some with accents. The middle staff shows chordal accompaniment with notes and stems. The bottom staff contains a bass line with notes and rests. The system is divided into four measures by vertical bar lines.

Handwritten musical score for the second system, also consisting of three staves. The notation continues from the first system. The top staff has a melodic line with notes and rests. The middle staff shows chordal accompaniment. The bottom staff contains a bass line. Dynamic markings such as 'f' and 'ff' are present. The system is divided into four measures by vertical bar lines.

Handwritten musical score for the first system, featuring a treble clef, a key signature of one sharp (F#), and a 2/4 time signature. The score consists of four measures. The first measure contains a melody with eighth notes and a chord with a sharp sign. The second measure has a series of chords. The third measure continues the melody with eighth notes. The fourth measure has a final chord. There are also some handwritten notes and symbols below the staff.

Handwritten musical score for the second system, featuring a treble clef, a key signature of one sharp (F#), and a 2/4 time signature. The score consists of four measures. The first measure contains a melody with eighth notes and a chord with a sharp sign. The second measure has a series of chords. The third measure continues the melody with eighth notes. The fourth measure has a final chord. There are also some handwritten notes and symbols below the staff.

Handwritten musical notation for the first system, consisting of three staves. The top staff has a treble clef and contains several notes with stems and beams. The middle staff has a bass clef and contains notes with stems and beams. The bottom staff has a bass clef and contains notes with stems and beams. There are some markings like 'y' and '3' in the notation.

Handwritten musical notation for the second system, consisting of three staves. The top staff has a treble clef and contains several notes with stems and beams. The middle staff has a bass clef and contains notes with stems and beams. The bottom staff has a bass clef and contains notes with stems and beams. There are some markings like 'y' and '3' in the notation.

The image shows two systems of handwritten musical notation, each consisting of three staves. The notation is dense and includes various musical symbols such as notes, stems, beams, and rests.

**System 1 (Top):**

- Staff 1 (Top):** Contains several chords with notes and stems, some with accents (^) and slurs.
- Staff 2 (Middle):** Contains rhythmic notation with stems and flags, and some chordal symbols.
- Staff 3 (Bottom):** Contains rhythmic notation with stems and flags, and some chordal symbols.

**System 2 (Bottom):**

- Staff 1 (Top):** Contains several chords with notes and stems, some with accents (^) and slurs.
- Staff 2 (Middle):** Contains rhythmic notation with stems and flags, and some chordal symbols.
- Staff 3 (Bottom):** Contains rhythmic notation with stems and flags, and some chordal symbols.

Handwritten musical score for the first system, consisting of five staves. The top staff is in treble clef with a key signature of one sharp (F#) and a common time signature (C). It begins with a dynamic marking of *mf* and contains a melodic line with notes and rests. The second staff is in treble clef with a key signature of one sharp and contains a piano part with notes and rests, marked with a circled *p*. The third staff is labeled "Pedal" and contains a single note. The fourth staff is in bass clef with a key signature of one sharp and contains a bass line with notes and rests. The fifth staff is in bass clef with a key signature of one sharp and contains a bass line with notes and rests, marked with a circled *p*.

Handwritten musical score for the second system, consisting of five staves. The top staff is in treble clef with a key signature of one sharp and a common time signature. It begins with a dynamic marking of *fp* and contains a melodic line with notes and rests. The second staff is in treble clef with a key signature of one sharp and contains a piano part with notes and rests, marked with a circled *mf* and the word "Pedal". The third staff is labeled "Pedal" and contains a single note. The fourth staff is in bass clef with a key signature of one sharp and contains a bass line with notes and rests. The fifth staff is in bass clef with a key signature of one sharp and contains a bass line with notes and rests, marked with a circled *f*.

Handwritten musical score for the first system, consisting of four staves. The top staff is in treble clef and contains a melodic line with various notes and rests. The second staff is in bass clef and includes a circled 'F' with the word 'Pedal' and an arrow pointing left, indicating a pedal point. The third and fourth staves are in bass clef and contain rhythmic patterns and chordal structures. The system is divided into four measures by vertical bar lines.

Handwritten musical score for the second system, also consisting of four staves. The top staff is in treble clef and features a circled 'F' and a circled '7'. The second staff is in bass clef and contains a circled '7'. The third and fourth staves are in bass clef and contain rhythmic patterns and chordal structures. The system is divided into four measures by vertical bar lines.

CO DA

Handwritten musical score for the first system. It consists of five staves. The top staff is for strings, with a treble clef and a key signature of one flat. The second staff is for piano, with a treble clef and a key signature of one flat, and includes the instruction "(Pedal)". The third staff is for bass, with a bass clef and a key signature of one flat. The fourth staff contains rhythmic notation and dynamics like *ff* and *no*. The fifth staff contains rhythmic notation and dynamics like *no* and *ff*. The word "dim" is written across the piano and bass staves. The system ends with a double bar line and the instruction "1. 2." below it.

Handwritten musical score for the second system. It consists of five staves. The top three staves are mostly empty, with some horizontal lines. The fourth staff is for bass, with a bass clef and a key signature of one flat, and includes the instruction "Solo". The fifth staff contains rhythmic notation and dynamics like *ff*. The system ends with a double bar line.

Bass Solo

Handwritten musical notation for a bass solo. It shows a bass clef, a key signature of one flat, and a series of rhythmic notes. The word "dim" is written below the notes. The notation is enclosed in a large bracket with the text "(2x + rit... dim...)" below it.

Lento (freies Blaestempo) Teil 2.

beginnt mit Flöte

(Klingend natürlich)

(nicht schleppend!)

pp

pp



Handwritten musical score for the first system. It consists of three staves. The top staff is in treble clef with a key signature of one sharp (F#) and a 2/4 time signature. It contains a melodic line with slurs and accents. The middle staff is in bass clef and contains chords. The bottom staff is in bass clef and contains rhythmic patterns and dynamic markings such as 'f'.

Handwritten musical score for the second system. It consists of three staves. The top staff is in treble clef with a key signature of one sharp (F#) and a 2/4 time signature. It contains a melodic line with slurs. The middle staff is in bass clef and contains chords. The bottom staff is in bass clef and contains rhythmic patterns and dynamic markings such as 'p'.


Handwritten musical score for guitar, first system. The score is written on five staves. The top staff is in treble clef and contains a melodic line with a slur and a fermata. The second staff is in bass clef and contains a bass line with a slur and a fermata. The third and fourth staves are in bass clef and contain a bass line with a slur and a fermata. The fifth staff is in bass clef and contains a bass line with a slur and a fermata. A circled 'P' is written below the fifth staff.

Handwritten musical score for guitar, second system. The score is written on five staves. The top staff is in treble clef and contains a melodic line with a slur and a fermata. The second staff is in bass clef and contains a bass line with a slur and a fermata. The third and fourth staves are in bass clef and contain a bass line with a slur and a fermata. The fifth staff is in bass clef and contains a bass line with a slur and a fermata. A circled 'P' is written below the fifth staff.

Handwritten musical score for guitar, page 18. The score is written on a grand staff with five systems. The top staff is the treble clef, and the bottom staff is the bass clef. The music features complex chordal textures with many accidentals (sharps and flats) and slurs. The first system includes a treble clef, a key signature of one sharp (F#), and a common time signature. The second system has a treble clef and a key signature of one flat (Bb). The third system has a treble clef and a key signature of two flats (Bb, Eb). The fourth system has a treble clef and a key signature of two flats (Bb, Eb). The fifth system has a treble clef and a key signature of two flats (Bb, Eb). The notation includes various rhythmic values, slurs, and dynamic markings like 'p' and 'f'. There are also some handwritten annotations and arrows pointing to specific parts of the score.

Handwritten musical notation on a four-staff system. The notation includes various notes, rests, and accidentals (sharps and flats). Above the first staff, there are notes with accidentals:  $b_9 \cdot b_7 \cdot b_7 \cdot b_7$  and  $b_7 \cdot b_7 \cdot b_7 \cdot b_7$ . Above the second staff, there are notes with accidentals:  $b_7 \cdot b_7 \cdot b_7 \cdot b_7$ . Above the third staff, there are notes with accidentals:  $b_7 \cdot b_7 \cdot b_7 \cdot b_7$ . Above the fourth staff, there are notes with accidentals:  $b_7 \cdot b_7 \cdot b_7 \cdot b_7$ . There are also some vertical lines and arrows indicating relationships between notes.

(Pia)

(poco rit) 

Handwritten musical notation on a four-staff system. The notation includes various notes, rests, and accidentals. Above the first staff, there are notes with accidentals:  $b_7 \cdot b_7 \cdot b_7 \cdot b_7$  and  $b_7 \cdot b_7 \cdot b_7 \cdot b_7$ . Above the second staff, there are notes with accidentals:  $b_7 \cdot b_7 \cdot b_7 \cdot b_7$ . Above the third staff, there are notes with accidentals:  $b_7 \cdot b_7 \cdot b_7 \cdot b_7$ . Above the fourth staff, there are notes with accidentals:  $b_7 \cdot b_7 \cdot b_7 \cdot b_7$ . There is a large, dark, scribbled-out area in the right-hand part of the system. Below the fourth staff, there are notes with accidentals:  $b_7 \cdot b_7 \cdot b_7 \cdot b_7$  and  $b_7 \cdot b_7 \cdot b_7 \cdot b_7$ . There are also some vertical lines and arrows indicating relationships between notes.

salita (chords examples)

The first system of handwritten musical notation consists of three staves. The top staff is in treble clef and contains a melodic line with notes such as G4, A4, B4, C5, and D5, some with accents and slurs. The middle staff is in alto clef and shows chords with sharp signs (#) and upward-pointing arrows (^). The bottom staff is in bass clef and contains a rhythmic pattern of eighth notes. A circled '3' is written below the first measure of the bass staff.

The second system of handwritten musical notation also consists of three staves. The top staff continues the melodic line from the first system. The middle staff shows chords with flat signs (b) and upward-pointing arrows (^). The bottom staff continues the rhythmic pattern of eighth notes.

Handwritten musical score for the first system, consisting of three measures. The top staff is in treble clef with a key signature of one flat and a common time signature. The middle and bottom staves are in bass clef. The notation includes various notes, rests, and slurs.

Handwritten musical score for the second system, consisting of three measures. The top staff is in treble clef with a key signature of one flat and a common time signature. The middle and bottom staves are in bass clef. The notation includes various notes, rests, and slurs.

Handwritten musical score for the first system, consisting of three staves. The top staff contains a series of chords, with a bracket indicating a sequence of notes. The middle staff contains a melodic line with notes and stems. The bottom staff contains a bass line with notes and stems. The notation is in black ink on a white background.

(poco rit.)

Handwritten musical score for the second system, consisting of three staves. The top staff contains a series of chords, with a bracket indicating a sequence of notes. The middle staff contains a melodic line with notes and stems. The bottom staff contains a bass line with notes and stems. The notation is in black ink on a white background.

Canto (frei)

Handwritten musical score for Canto (frei). The score is written on a grand staff with five staves. The top staff contains a melodic line with a treble clef and a key signature of one flat. It begins with a piano (pp) dynamic and features a series of sixteenth-note passages. The music is divided into three measures by vertical bar lines. The first two measures are connected by a slur, and the third measure is also slurred. The score ends with a double bar line and repeat dots.

Schlagwerk Solo (frei)

Handwritten musical score for Schlagwerk Solo (frei). The score is written on a single staff with a treble clef and a key signature of one flat. It begins with a piano (pp) dynamic and features a series of sixteenth-note passages. The music is divided into three measures by vertical bar lines. The first two measures are connected by a slur, and the third measure is also slurred. The score ends with a double bar line and repeat dots.

Handwritten musical score for Schlagwerk Solo (frei). The score is written on a single staff with a treble clef and a key signature of one flat. It begins with a piano (pp) dynamic and features a series of sixteenth-note passages. The music is divided into three measures by vertical bar lines. The first two measures are connected by a slur, and the third measure is also slurred. The score ends with a double bar line and repeat dots.

Hand — rit + din

Handwritten musical score for Hand — rit + din. The score is written on a single staff with a treble clef and a key signature of one flat. It begins with a piano (pp) dynamic and features a series of sixteenth-note passages. The music is divided into five measures by vertical bar lines. The first two measures are connected by a slur, and the third measure is also slurred. The score ends with a double bar line and repeat dots.

ritig

Handwritten musical score for ritig. The score is written on a single staff with a treble clef and a key signature of one flat. It begins with a piano (pp) dynamic and features a series of sixteenth-note passages. The music is divided into three measures by vertical bar lines. The first two measures are connected by a slur, and the third measure is also slurred. The score ends with a double bar line and repeat dots.

pp dal f (dove 4:4)

al f coda



♩ CODA (für Teil 2)

(nimmt Normalflöte)

folgt (Moderato assai) Teil 1.

al ♩ CODA

♩ CODA (für Teil 1) (sempre din)

ff (2b+p)

(+) (2b+p)



(frei)

Handwritten musical score for the first system, consisting of five staves. The notation includes notes, rests, and dynamic markings such as *pp* and *p*. The first staff has a treble clef and a key signature of one flat. The second staff has a treble clef and a key signature of one flat. The third staff has a bass clef and a key signature of one flat. The fourth and fifth staves have bass clefs and a key signature of one flat. The score is divided into measures by vertical bar lines.

(lunga)

Handwritten musical score for the second system, consisting of five staves. The notation includes notes, rests, and dynamic markings such as *pp* and *p*. The first staff has a treble clef and a key signature of one flat. The second and third staves have treble clefs and a key signature of one flat. The fourth and fifth staves have bass clefs and a key signature of one flat. The score is divided into measures by vertical bar lines. A large scribble is present at the bottom right of the page.