

L.v. BEETHOVEN



W.A. MOZART



NOTENHEFT

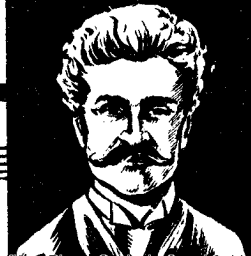
F. SCHUBERT



J. HAYDN



J. STRAUSS



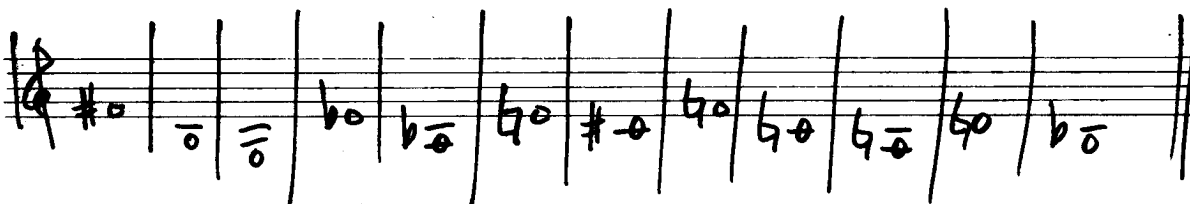
Studie in B 1972

für Solo Flöte (Altflöte)

Piano

Schlagbaß und Schlagwerk

Adolf Scherbaum



Teil 1

Moderato assai

Flöte

Flöte

Piano

Baß

Schlagwerk

Handwritten musical score for the first system. The top staff is in treble clef, showing a melodic line with a key signature of two flats and a common time signature. The middle staves are a grand staff with piano accompaniment, and the bottom staff is in bass clef with a rhythmic line. The music is divided into four measures by vertical bar lines.

Handwritten musical score for the second system. The top staff is in treble clef, showing a melodic line with a key signature of two flats and a common time signature. The middle staves are a grand staff with piano accompaniment, and the bottom staff is in bass clef with a rhythmic line. The music is divided into five measures by vertical bar lines.

Handwritten musical score for the first system, consisting of five staves. The notation includes complex chords, dynamics such as *f* and *ff*, and various articulation marks like accents and slurs. The first staff has a treble clef and a key signature of one flat. The second staff has a treble clef and a key signature of one flat. The third staff has a bass clef and a key signature of one flat. The fourth staff has a bass clef and a key signature of one flat. The fifth staff has a bass clef and a key signature of one flat.

Handwritten musical score for the second system, consisting of five staves. The notation includes complex chords, dynamics such as *f* and *ff*, and various articulation marks like accents and slurs. The first staff has a treble clef and a key signature of one sharp. The second staff has a treble clef and a key signature of one sharp. The third staff has a bass clef and a key signature of one sharp. The fourth staff has a bass clef and a key signature of one sharp. The fifth staff has a bass clef and a key signature of one sharp. The word "dim." is written above the fifth staff in the second measure.

Handwritten musical score for the first system, consisting of five staves. The notation includes notes, rests, and dynamic markings such as $fp=$ and $p=$. The first staff has a treble clef and a key signature of one flat. The second staff has a bass clef and a key signature of one flat. The third staff has a bass clef and a key signature of one flat. The fourth staff has a bass clef and a key signature of one flat. The fifth staff has a bass clef and a key signature of one flat. The score is divided into two measures by a vertical bar line.

Handwritten musical score for the second system, consisting of five staves. The notation includes notes, rests, and dynamic markings such as $f=$ and $fp=$. The first staff has a treble clef and a key signature of one flat. The second staff has a bass clef and a key signature of one flat. The third staff has a bass clef and a key signature of one flat. The fourth staff has a bass clef and a key signature of one flat. The fifth staff has a bass clef and a key signature of one flat. The score is divided into two measures by a vertical bar line.

Handwritten musical score for the first system, consisting of five staves. The notation includes notes, rests, and dynamic markings such as $f =$ and f . The first staff has a treble clef and a key signature of one sharp (F#). The second staff has a bass clef and a key signature of one flat (Bb). The third staff has a bass clef and a key signature of one flat (Bb). The fourth staff has a bass clef and a key signature of one flat (Bb). The fifth staff has a bass clef and a key signature of one flat (Bb). The music is divided into four measures by vertical bar lines.

Handwritten musical score for the second system, consisting of five staves. The notation includes notes, rests, and dynamic markings such as fp and p . The first staff has a treble clef and a key signature of one sharp (F#). The second staff has a bass clef and a key signature of one flat (Bb). The third staff has a bass clef and a key signature of one flat (Bb). The fourth staff has a bass clef and a key signature of one flat (Bb). The fifth staff has a bass clef and a key signature of one flat (Bb). The music is divided into four measures by vertical bar lines.

Handwritten musical score for the first system, consisting of four staves. The top staff contains a melodic line with notes and slurs. The second staff has a circled 'p' and a chord. The third staff has a circled 'p' and notes with accents. The bottom staff has a circled 'p' and rests. Vertical bar lines divide the system into measures.

Handwritten musical score for the second system, consisting of four staves. The top staff contains a melodic line with notes and slurs. The second staff has a circled 'p' and chords. The third staff has notes and rests. The bottom staff has a circled 'p' and a rhythmic pattern. Vertical bar lines divide the system into measures.

Handwritten musical score for the first system, consisting of three staves. The top staff contains a melodic line with various notes and rests, including some with accents. The middle staff shows chordal accompaniment with notes and rests. The bottom staff contains a bass line with notes and rests. There are several dynamic markings and slurs throughout the system.

Handwritten musical score for the second system, also consisting of three staves. The notation continues from the first system. The top staff has a melodic line with notes and rests. The middle staff shows chordal accompaniment. The bottom staff contains a bass line. Dynamic markings, including 'f' (forte), are present in the second and third measures of this system.

Handwritten musical score for the first system. It consists of three staves: treble clef (top), alto clef (middle), and bass clef (bottom). The treble staff contains two measures of music with notes and accents, followed by two measures of rests. The alto staff contains two measures of music with notes and accents, followed by two measures of rests. The bass staff contains two measures of music with notes and rests, followed by two measures of rests. There are dynamic markings like *ff* and *f* throughout.

Handwritten musical score for the second system. It consists of three staves: treble clef (top), alto clef (middle), and bass clef (bottom). The treble staff contains two measures of music with notes and accents, followed by two measures of rests. The alto staff contains two measures of music with notes and accents, followed by two measures of rests. The bass staff contains two measures of music with notes and rests, followed by two measures of rests. There are dynamic markings like *ff* and *f* throughout.

Handwritten musical score for the first system. It consists of three staves: treble, alto, and bass. The treble staff contains complex rhythmic patterns with slurs and accents. The alto staff shows chords with a sharp sign. The bass staff contains rhythmic notation with slurs. A 'din' marking is present in the bottom right of the system.

Handwritten musical score for the second system. It consists of three staves: treble, alto, and bass. The treble staff contains complex rhythmic patterns with slurs and accents. The alto staff shows chords with a sharp sign. The bass staff contains rhythmic notation with slurs. Dynamic markings like 'A' are present below the bass staff.

Handwritten musical score for the first system. The top staff (treble clef) contains complex chords with various accidentals (flats and naturals) and slurs. The bottom staff (bass clef) contains rhythmic notation with stems and flags, and some chordal symbols.

Handwritten musical score for the second system. The notation continues with complex chords in the treble clef and rhythmic patterns in the bass clef. The system concludes with a double bar line.

Handwritten musical score for the first system, consisting of five staves. The notation includes notes, rests, and dynamic markings. The first staff has a treble clef and a key signature of one sharp (F#). The second staff has a treble clef and a key signature of one sharp (F#). The third staff is labeled "Pedal" and has a bass clef. The fourth staff has a bass clef and a key signature of one sharp (F#). The fifth staff has a bass clef and a key signature of one sharp (F#). The dynamic marking *mf* is present in the first staff. The notation is dense and includes various rhythmic values and articulations.

Handwritten musical score for the second system, consisting of five staves. The notation continues from the first system. The first staff has a treble clef and a key signature of one sharp (F#). The second staff has a treble clef and a key signature of one sharp (F#). The third staff is labeled "Pedal (mf)" and has a bass clef. The fourth staff has a bass clef and a key signature of one sharp (F#). The fifth staff has a bass clef and a key signature of one sharp (F#). The dynamic marking *fp* is present in the first staff. The notation is dense and includes various rhythmic values and articulations.

Handwritten musical score for the first system. It consists of three staves: Treble Clef (top), Piano (middle), and Bass Clef (bottom). The Treble staff contains a melodic line with notes and rests, including a fermata over the final note. The Piano staff includes a circled 'Pedal' marking and rests. The Bass staff contains a bass line with notes and rests, including a circled 'p' marking. The system is divided into four measures by vertical bar lines.

Handwritten musical score for the second system. It consists of five staves: Treble Clef (top), Piano (middle), Bass Clef (bottom), and two additional staves at the bottom. The Treble staff contains complex chordal textures with notes and rests. The Piano staff includes a circled 'p' marking and rests. The Bass staff contains a bass line with notes and rests, including a circled 'p' marking. The two bottom staves contain rhythmic patterns and rests. The system is divided into four measures by vertical bar lines.

CODA

Handwritten musical score for the first system. It consists of three staves: Treble Clef (top), Alto Clef (middle), and Bass Clef (bottom). The Treble staff has a key signature of one flat and contains several measures with notes and rests, including a circled 'P' at the end. The Alto staff contains notes and rests, with the word 'dün' written below it. The Bass staff contains notes and rests, with 'ff' and 'no' markings. There are various dynamic markings like 'ff', 'ff (Pedal)', and 'ff' throughout. The system ends with a double bar line and a 'CODA' box in the top right corner.

1. 2.

Handwritten musical score for the second system. It consists of three staves: Treble Clef (top), Alto Clef (middle), and Bass Clef (bottom). The Treble and Alto staves contain mostly rests. The Bass staff contains notes and rests, with 'Solo' and 'ff' markings. There are various dynamic markings like 'ff' and 'ff' throughout. The system ends with a double bar line.

Bass Solo

Handwritten musical score for the Bass Solo section. It consists of a single Bass Clef staff. The staff contains notes and rests, with 'ff' and 'dün' markings. There are various dynamic markings like 'ff' and 'ff' throughout. The section ends with a double bar line and a fermata.

Canto (freies Bluestempo) Teil 2.

nimmt Altflöte)

(Klingend und nicht)

(nicht schleppend!)

pp

pp

pp

pp

pp

pp

pp

pp

pp

pp

Handwritten musical score for the first system. It consists of three staves. The top staff is in treble clef, the middle in alto clef, and the bottom in bass clef. The music includes various notes, rests, and dynamic markings such as *f* and *p*. There are also some handwritten annotations like "uua" and "b" above notes.

Handwritten musical score for the second system. It continues the notation from the first system, using the same three-staff layout (treble, alto, bass clefs). The notation includes notes, rests, and dynamic markings like *f* and *p*. There are also some handwritten annotations like "p" in circles.

frei

Handwritten musical score for the first system. The top staff is a flute line in treble clef, starting with a melodic phrase in 4/4 time, marked 'frei'. The piano accompaniment consists of four staves: the first two are grand staff (treble and bass clefs), and the last two are bass clefs. The piano part includes chords and rhythmic patterns, with a circled 'P' (piano) marking at the beginning of the second measure.

Handwritten musical score for the second system. The flute line continues with a melodic phrase, marked with a '4' above the staff. The piano accompaniment continues with chords and rhythmic patterns, also marked with a circled 'P' (piano) at the beginning of the second measure.

Handwritten musical score for the first system. The top staff is for the flute, showing a melodic phrase with a slur and accents. The piano accompaniment consists of three staves: the first has chords and a dynamic marking of mf ; the second has a rhythmic pattern of eighth notes; the third has a similar rhythmic pattern. The system spans three measures.

Handwritten musical score for the second system. The flute line continues with a melodic phrase, including a sharp exclamation mark and accents. The piano accompaniment continues with chords and rhythmic patterns, featuring several arrows pointing to specific notes or groups of notes. The system spans three measures.

Handwritten musical notation on a grand staff (treble, alto, and bass clefs). The notation includes various notes, rests, and dynamic markings. A large slur covers the first two measures. The third measure contains a complex chord structure with a sharp sign and a double bar line. The fourth measure is mostly empty with a few notes. A circled area in the bass clef contains the number '3' and some scribbles.

Handwritten musical notation on a grand staff. The first measure has a circled area with the word '(frei)'. The second measure has a circled area with the word '(poco rit)'. The third measure has a circled area with a scribble. The fourth measure has a circled area with a scribble. The notation includes various notes, rests, and dynamic markings.

sobito (claras breves)

The first system of the handwritten musical score consists of four measures. The top staff is for the flute, marked with a treble clef and a key signature of one sharp (F#). It begins with a 'sola' marking and a dynamic of 'ff'. The notes are: F#4 (quarter), G4 (quarter), A4 (quarter), B4 (quarter), C5 (quarter), D5 (quarter), E5 (quarter), and F#5 (quarter). The second and third staves are for the piano, with a bass clef and a key signature of one sharp. The second staff contains chords: F#4-G4-A4 (quarter), B4-C5 (quarter), and D5-E5 (quarter). The third staff contains arpeggiated chords: F#4-G4-A4 (quarter), B4-C5 (quarter), and D5-E5 (quarter). The fourth staff contains a circled 'F' and a sequence of notes: F#4 (quarter), G4 (quarter), A4 (quarter), B4 (quarter), and C5 (quarter).

The second system of the handwritten musical score consists of four measures. The top staff is for the flute, marked with a treble clef and a key signature of one sharp. It begins with a circled 'F' and a sequence of notes: F#4 (quarter), G4 (quarter), A4 (quarter), B4 (quarter), and C5 (quarter). The second and third staves are for the piano, with a bass clef and a key signature of one sharp. The second staff contains chords: F#4-G4-A4 (quarter), B4-C5 (quarter), and D5-E5 (quarter). The third staff contains arpeggiated chords: F#4-G4-A4 (quarter), B4-C5 (quarter), and D5-E5 (quarter). The fourth staff contains a circled 'F' and a sequence of notes: F#4 (quarter), G4 (quarter), A4 (quarter), B4 (quarter), and C5 (quarter).

Handwritten musical score for the first system, consisting of three staves. The top staff is in treble clef with a key signature of one flat and a 7/8 time signature. It contains four measures of music with various notes, rests, and slurs. The middle and bottom staves are in bass clef and contain rhythmic patterns represented by slanted lines and some notes.

Handwritten musical score for the second system, consisting of three staves. The top staff is in treble clef with a key signature of one flat and a 7/8 time signature. It contains four measures of music with various notes, rests, and slurs. The middle and bottom staves are in bass clef and contain rhythmic patterns represented by slanted lines and some notes.

The first system of the handwritten musical score consists of three staves. The top staff is in treble clef and contains several chords, some with an '8' marking above them. The middle staff is in bass clef and contains chords, some with a '7B' marking. The bottom staff is in bass clef and contains a melodic line with slurs and accents. The system is divided into four measures by vertical bar lines.

(poco rit)

The second system of the handwritten musical score consists of three staves. The top staff is in treble clef and contains chords with '8' markings and accents. The middle staff is in bass clef and contains chords with '8' markings and accents. The bottom staff is in bass clef and contains a melodic line with slurs and accents. The system is divided into four measures by vertical bar lines.

Canto (frei)

Schlagwerk Solo (frei)

al COPPA
 dal COPPA (ohne 11:1)

♩ CODA (für Teil 2)

(nimmt Normalflöte)

folgt (Moderato assai) Teil 1.

al ♩ CODA

(♩ CODA (für Teil 1) (sempre diu)

ff (2te+p)

(+) → (2te+p)

(4+ - 6 + wiederh.) sempre dim
Tempo bleibt gleich.

Handwritten musical score for the first system, consisting of five staves. The notation includes notes, rests, and dynamic markings such as accents and slurs. A circled 'P' is present in the second staff. The tempo marking 'Tempo bleibt gleich.' is written above the staves, and 'sempre dim' is written below the staves.

Handwritten musical score for the second system, continuing the notation from the first system. It features five staves with notes, rests, and dynamic markings. A circled 'P' is present in the first staff. The notation is consistent with the first system, showing a continuation of the musical piece.

(frei)

Handwritten musical score for the first system, consisting of five staves. The top staff is mostly empty with a few notes. The second staff has a melodic line starting with a pp dynamic. The third and fourth staves have rhythmic patterns with b/o markings. The fifth staff has a melodic line with pp and p dynamics. The system concludes with a double bar line and a pp marking.

(lunga)

Handwritten musical score for the second system, consisting of five staves. The top staff features a sequence of notes numbered 1 through 6, followed by a melodic line. The second and third staves are mostly empty. The fourth staff has a melodic line with b/o markings. The fifth staff has a melodic line with b/o markings and a $\#$ symbol. The system concludes with a double bar line and a $\#$ symbol. Below the staves, there are handwritten notes: "freies Solo" and "ad lib.".