

Sonate für Jazzensemble

Adolf Scherbaum

Sonate für

Flöte — 3 Posaunen

Solo Bass und

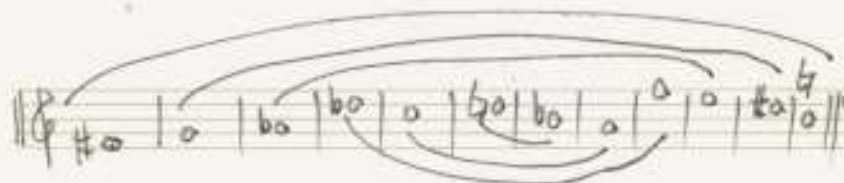
Schlagwerk -

1972

Adolf Scherbaum

(Jazzrhythmen über eine
12-Tonreihe) —

(*mm* = *peiss* (immer im letzten
Augulloch))



Teil 1

Flügel
Flöte Solo

3 Personen

Bass Solo

Pizz

Schlagwerke

Handwritten musical score for the first system, featuring four staves. The notation includes notes, rests, and dynamic markings such as f and ff . A circled '2' is present in the first staff. A circled 'H' is located below the second staff. A circled 'F' is located below the third staff. A circled 'F' is located below the fourth staff. The score is divided into two measures by a vertical bar line.

Handwritten musical score for the second system, featuring four staves. The notation includes notes, rests, and dynamic markings such as p . A circled '2' is present in the first staff. A circled 'p' is located below the second staff. A circled 'p' is located below the third staff. A circled 'p' is located below the fourth staff. A red arrow points to the right above the second staff. The score is divided into two measures by a vertical bar line.

2

Handwritten musical notation for system 2, measures 92-94. The system consists of three staves. The top staff is in treble clef and contains notes with accidentals (sharps and naturals) and dynamic markings like $mf =$ and ff . A circled measure number '92' is at the start, and another circled '94' is in the middle. The middle staff is in bass clef with rhythmic notation and dynamic markings. The bottom staff is in bass clef with rhythmic notation and dynamic markings. The system ends with a double bar line.

3

Handwritten musical notation for system 3, measures 95-97. The system consists of three staves. The top staff is in treble clef with notes and accidentals, starting with a circled measure number '93'. The middle staff is in bass clef with rhythmic notation and accidentals, starting with a circled measure number '94'. The bottom staff is in bass clef with rhythmic notation. The system ends with a double bar line.

Handwritten musical score for the first system, featuring three staves:

- Top Staff:** Treble clef, 4/4 time signature. Contains two measures of dense, sixteenth-note chords. A circled **(H)** is written below the first measure.
- Middle Staff:** Bass clef. Contains two measures of sustained chords. A circled **(ff)** is written below the first measure.
- Bottom Staff:** Treble clef. Contains rhythmic notation: $\underline{2} \underline{4} \underline{2} \underline{4} \underline{2} \underline{4} \underline{2}$ in the first measure and $\underline{4} \underline{2} \underline{2} \underline{4} \underline{2} \underline{4} \underline{2}$ in the second measure. A circled **(ff)** is written below the first measure.

Handwritten musical score for the second system, featuring three staves:

- Top Staff:** Treble clef. Contains two measures of chords with wavy lines above them. A circled **(p)** is written below the second measure.
- Middle Staff:** Bass clef. Contains two measures of chords. A circled **(H)** is written below the first measure. A circled **(p)** is written below the second measure.
- Bottom Staff:** Treble clef. Contains rhythmic notation: $\underline{2} \underline{4} \underline{3} \underline{3} \underline{2} \underline{3} \underline{3}$ in the first measure and $\underline{4} \underline{3} \underline{3} \underline{2} \underline{3} \underline{3}$ in the second measure. A circled **(pp)** is written below the second measure.

On the right side of the page, there is a large, hand-drawn red symbol consisting of a vertical line with a horizontal bar at the top and several dots along the line, resembling a stylized musical notation or a decorative element.

Handwritten musical score for the first system, consisting of four staves. The notation includes notes, rests, and dynamic markings such as p . The first staff has a circled p and a circled $\#$. The second staff has a circled p and a circled $\#$. The third staff has a circled p . The fourth staff has a circled p . The music is written in a system with a vertical bar line.

Handwritten musical score for the second system, consisting of four staves. The notation includes notes, rests, and dynamic markings such as f . The first staff has a circled f . The second staff has a circled f . The third staff has a circled f . The fourth staff has a circled f . The music is written in a system with a vertical bar line.

5

Handwritten musical score for system 5. It consists of three staves. The top staff is in treble clef with a key signature of one sharp (F#) and contains notes with various accidentals (b, #) and slurs. The middle staff is in treble clef with a key signature of one sharp (F#) and contains notes with accidentals and slurs. The bottom staff is in bass clef with a key signature of one sharp (F#) and contains a series of notes with stems pointing up. There are several circled numbers (3, 4, 4) and dynamic markings like mf and pp .

6

2+ D.C.

Handwritten musical score for system 6. It consists of three staves. The top staff is in treble clef with a key signature of one sharp (F#) and contains notes with accidentals and slurs. The middle staff is in treble clef with a key signature of one sharp (F#) and contains notes with accidentals and slurs. The bottom staff is in bass clef with a key signature of one sharp (F#) and contains notes with stems pointing up. There are several circled numbers (3, 4, 4) and dynamic markings like pp and ppp . A large red bracket is drawn on the right side of the staves, and there is a red scribble at the end of the system.



capit

mit (dies)

Handwritten musical score for guitar and bass. The score is written on five staves. The top staff is for guitar, and the bottom staff is for bass. The music is in 4/4 time and features a key signature of one sharp (F#). The score is divided into two systems by a double bar line. The first system contains two measures, and the second system contains two measures. The guitar part includes various notes, rests, and dynamics like 'p' and 'pp'. The bass part includes notes, rests, and dynamics like 'pp'. There are also some handwritten annotations and a large red bracket on the right side of the score.

2

Presto.

1

Handwritten musical score for the first system, measures 1-8. It features a grand staff with four staves. The top three staves are mostly empty with some horizontal lines. The bottom staff contains rhythmic notation: 'pp' followed by '1 1 2 1 2' and then a series of eighth notes with stems pointing down. A circled '7' is written below the staff.

2

Handwritten musical score for the second system, measures 9-12. It features a grand staff with four staves. The top staff has notes with accidentals and stems, including a circled '9' and a circled '11'. The second staff has notes with stems and a circled '11'. The third staff has notes with stems. The bottom staff has rhythmic notation.

Handwritten musical score for the first system. It consists of three staves: treble clef (top), alto clef (middle), and bass clef (bottom). The music is written in a complex, rhythmic style with many notes, some beamed together, and various accidentals (sharps, flats, naturals). A large red number '3' is written at the end of the system. There are also some circled numbers '93' and '93' in the first two staves.

Handwritten musical score for the second system. It continues the notation from the first system, with three staves (treble, alto, and bass clefs). The music is highly complex, featuring many notes, rests, and accidentals. There are several circled numbers '93' and '93' in the first two staves. The notation is dense and appears to be a study or a specific exercise.

4

Handwritten musical score for system 4. The system consists of four staves. The top staff is in treble clef and contains complex rhythmic patterns with many accidentals (sharps and flats) and slurs. The second staff is in bass clef and contains simpler notation with slurs. The third and fourth staves are also in bass clef and contain simpler notation with slurs. A circled sharp symbol is present on the second staff. At the bottom left, there is a small rhythmic notation: $f = | \cdot | \cdot | \cdot | \cdot |$.

5

Handwritten musical score for system 5. The system consists of four staves. The top staff is in treble clef and contains complex rhythmic patterns with many accidentals (sharps and flats) and slurs. The second staff is in bass clef and contains simpler notation with slurs. The third and fourth staves are also in bass clef and contain simpler notation with slurs. At the bottom left, there is a small rhythmic notation: $f = | \cdot | \cdot | \cdot | \cdot |$.

Handwritten musical notation for the first system, consisting of four staves:

- Staff 1 (Soprano):** Chordal notation with accidentals: $\sharp \sharp \sharp$, $\sharp \flat \sharp$, $\flat \sharp \flat \sharp$, $\sharp \flat \flat \sharp$.
- Staff 2 (Alto):** Chordal notation: $\flat \flat \flat$.
- Staff 3 (Tenor):** Chordal notation with accidentals: $\sharp \flat \flat \flat$, $\flat \flat \flat \flat$, $\flat \flat \flat \flat$, $\flat \flat \flat \flat$.
- Staff 4 (Bass):** Rhythmic notation with notes and rests.

Handwritten musical notation for the second system, consisting of four staves:

- Staff 1 (Soprano):** Chordal notation with accidentals: $\flat \flat \flat \flat$, $\sharp \sharp \sharp \sharp$, $\sharp \sharp \sharp$, $\flat \flat \flat \flat$.
- Staff 2 (Alto):** Chordal notation: $\flat \flat \flat \flat$.
- Staff 3 (Tenor):** Chordal notation with accidentals: $\flat \flat \flat \flat$.
- Staff 4 (Bass):** Rhythmic notation with notes and rests.

Large red handwritten markings on the right side of the page, including a large $\flat \sharp$ and a vertical line with dots.

Handwritten musical score for strings (1 Pos, 2 Pos, 3 Pos, Bass) and Cello/Double Bass. The score consists of six measures. The first measure is heavily obscured by a thick red vertical bar. The subsequent measures contain handwritten notes, accidentals, and dynamic markings such as *f* and *pp*. Above the staves, there are handwritten annotations including $\#p q b g$, $b p q b g$, and $\#p d b p$, which appear to be shorthand for specific chords or intervals.

Handwritten musical score for Flute (Flöte), 3rd Position (3 Pos.), Bassoon (Fagott), and Cello/Double Bass. The score consists of six measures. The first measure is obscured by a thick red vertical bar. The 3rd Position and Bassoon parts feature notes with accents (^) and slurs. The Cello/Double Bass part has a dynamic marking of *ff*. A large red vertical bar is present at the end of the sixth measure.

Handwritten musical score for the first system. The top staff (treble clef) contains a melodic line with notes and rests, including a slur over the first two measures and a dynamic marking 'f' in the third measure. The second staff (bass clef) contains a bass line with notes and rests, including a slur over the first two measures. The third staff (bass clef) contains a bass line with notes and rests, including a slur over the first two measures. The fourth staff (bass clef) contains a bass line with notes and rests, including a slur over the first two measures. The word 'Fill!' is written vertically on the left side of the fourth staff.

Handwritten musical score for the second system. The top staff (treble clef) contains a melodic line with notes and rests, including a slur over the first two measures and a dynamic marking 'ff' in the third measure. The second staff (bass clef) contains a bass line with notes and rests, including a slur over the first two measures. The third staff (bass clef) contains a bass line with notes and rests, including a slur over the first two measures. The fourth staff (bass clef) contains a bass line with notes and rests, including a slur over the first two measures. The word 'Fill!' is written vertically on the left side of the fourth staff. A large red '8' is written on the right side of the system.

folgt
 (Teil 1 bis 6)
 dann Teil 2
 al. f. corda

COPP

Handwritten musical score for the first system, featuring a grand staff with four staves. The notation includes complex chords, accidentals, and dynamic markings. A large red 'X' is drawn over the top left corner. The score is enclosed in a red bracket on the left and right sides.

Handwritten musical score for the second system, featuring a grand staff with four staves. The notation includes rests, complex chords, and dynamic markings. The score is enclosed in a red bracket on the left and right sides.