

Sonate für Jazzensemble

Adolf Scherbaum

Sonate für

Flöte — 3 Posunen

Solo Bass und

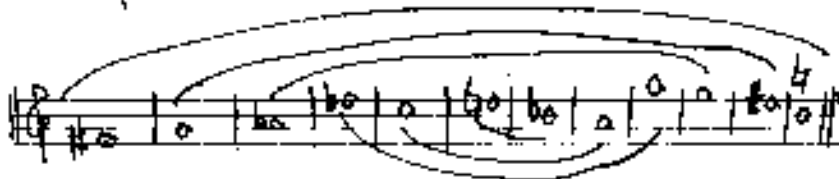
Schlagwerk

1972

Adolf Scherbaum

(Jazzrhythmen über eine
12/10-Metrik)

(*man* = *pliss* (immer im letzten
Taktteil))



Teil 1

Handlung

Flöte Solo

3 Personen

Bass Solo

pizz

Schlagwerk

Handwritten musical score for the first system. The score is written on three staves. The top staff is in treble clef with a key signature of one sharp (F#) and a 4/4 time signature. It contains a melodic line with notes and rests, including a circled '2' and a circled 'H'. The middle staff is in bass clef and contains a bass line with notes and rests, including a circled 'H'. The bottom staff contains a piano accompaniment with chords and rests, including a circled 'H'. The music is divided into two measures by a vertical bar line.



Handwritten musical score for the second system. The score is written on three staves. The top staff is in treble clef with a key signature of one sharp (F#) and a 4/4 time signature. It contains a melodic line with notes and rests, including a circled '2' and a circled 'p'. The middle staff is in bass clef and contains a bass line with notes and rests, including a circled 'p'. The bottom staff contains a piano accompaniment with chords and rests, including a circled 'p'. The music is divided into two measures by a vertical bar line.

2

Handwritten musical notation for system 2. The staff begins with a treble clef and a circled number '2'. The notation includes a series of notes with stems, some marked with accents, and rests. A large slur covers a group of notes in the first measure. A circled number '4' is written below the staff in the second measure. The system concludes with a double bar line.

3

Handwritten musical notation for system 3. The staff begins with a treble clef and a circled number '3'. The notation includes a series of notes with stems, some marked with accents, and rests. A large slur covers a group of notes in the first measure. A circled number '4' is written below the staff in the first measure. The system concludes with a double bar line.

Handwritten musical score for the first system, consisting of three staves. The top staff is in treble clef with a circled sharp sign (♯) and contains complex chordal figures with various accidentals. The middle staff is in alto clef with a circled sharp sign (♯) and contains fewer notes, including a circled sharp sign (♯) and a circled flat sign (♭). The bottom staff is in bass clef with a circled sharp sign (♯) and contains a rhythmic pattern of notes: ♯ 2 3 4 2 4 4 2 | 4 4 2 4 4 2 4 4 2.

Handwritten musical score for the second system, consisting of three staves. The top staff is in treble clef and contains complex chordal figures with various accidentals and a circled 'p' dynamic marking. The middle staff is in alto clef with a circled sharp sign (♯) and contains notes with various accidentals and a circled 'p' dynamic marking. The bottom staff is in bass clef with a circled sharp sign (♯) and contains a rhythmic pattern of notes: ♯ 2 3 3 2 1 3 3 | 4 3 3 2 1 3 3. A large, thick black scribble is present on the right side of the page, overlapping the staves.

Handwritten musical score for the first system, consisting of four staves. The notation includes various notes, rests, and dynamic markings. The first staff begins with a treble clef and a key signature of one sharp (F#). It contains several measures of music, including a circled 'p' (piano) marking. The second staff starts with a bass clef and contains a circled 'p' marking. The third staff also begins with a bass clef and contains a circled 'p' marking. The fourth staff starts with a bass clef and contains a circled 'p' marking. The system concludes with a double bar line.

Handwritten musical score for the second system, consisting of four staves. The notation includes various notes, rests, and dynamic markings. The first staff begins with a treble clef and a key signature of one sharp (F#). It contains several measures of music, including a circled 'p' (piano) marking. The second staff starts with a bass clef and contains a circled 'p' marking. The third staff also begins with a bass clef and contains a circled 'p' marking. The fourth staff starts with a bass clef and contains a circled 'p' marking. The system concludes with a double bar line.

5

Handwritten musical score for system 5. It consists of three staves. The top staff is in treble clef with a key signature of one sharp (F#) and a 3/4 time signature. It contains a melodic line with notes and accidentals (b, #) and dynamic markings like *mf* and *f*. The middle staff is in bass clef with a key signature of one sharp (F#) and contains a lower melodic line with notes and accidentals. The bottom staff is in bass clef with a key signature of one sharp (F#) and contains a rhythmic accompaniment of eighth notes. There are circled numbers 3 and 4 in the left margin.

6

2 + D.C.

Handwritten musical score for system 6. It consists of three staves. The top staff is in treble clef with a key signature of one sharp (F#) and contains a melodic line with notes and accidentals, ending with a double bar line. The middle staff is in bass clef with a key signature of one sharp (F#) and contains a lower melodic line with notes and accidentals. The bottom staff is in bass clef with a key signature of one sharp (F#) and contains a rhythmic accompaniment of eighth notes. There are circled numbers 1, 2, 3, and 4 in the left margin. The system ends with a double bar line and a fermata-like symbol.

~~A cord~~ out (dim)

Handwritten musical score for guitar, consisting of five staves. The score is divided into two systems by a double bar line. The first system contains three measures, and the second system contains one measure. The notation includes notes, accidentals, and dynamic markings such as *p* and *pp*. A large bracket on the left groups the first four staves, and another on the right groups the last two staves. Below the bottom staff, there are guitar-specific notations including fret numbers (e.g., 3, 5, 7, 9, 11, 12) and a circled *pp* marking.

2

Presto

1

Handwritten musical score for the first system, measures 1-7. The score is written on five staves. The first two staves are for the right hand, with a treble clef and a 2/2 time signature. The third staff is for the left hand, with a bass clef. The bottom two staves are for the piano accompaniment, with a bass clef and a 2/2 time signature. The music consists of several measures of notes and rests, with some notes beamed together. A circled '2' is written at the end of the system.

2

Handwritten musical score for the second system, measures 8-11. The score is written on five staves. The first two staves are for the right hand, with a treble clef and a 2/2 time signature. The third staff is for the left hand, with a bass clef. The bottom two staves are for the piano accompaniment, with a bass clef and a 2/2 time signature. The music consists of several measures of notes and rests, with some notes beamed together. A circled '2' is written at the end of the system.

Handwritten musical score for the first system. It features a treble clef, a key signature of one sharp (F#), and a 3/4 time signature. The score consists of four measures. The first measure has a circled '93' and an accent (^) over the first note. The second measure has an accent (^) over the first note. The third measure has an accent (^) over the first note. The fourth measure has an accent (^) over the first note and a circled '3' at the end of the staff. The bass line includes a forte (ff) dynamic marking in the fourth measure.

Handwritten musical score for the second system. It features a treble clef, a key signature of one sharp (F#), and a 3/4 time signature. The score consists of four measures. The first measure has a circled '93' and a circled 'p'. The second measure has a circled 'p'. The third measure has a circled 'p'. The fourth measure has a circled 'p'. The bass line includes a circled 'p' in the first measure and a circled 'p' in the second measure.

4

Handwritten musical score for system 4. The system consists of five measures. The top staff is in treble clef with a key signature of one flat (B-flat) and a common time signature. It features a melodic line with slurs and accents. The second staff from the top has a circled sharp sign (#) and contains a bass line with a slash. The third staff from the top has a circled sharp sign (#) and contains a bass line with a slash. The bottom staff contains a guitar part with a slash and a circled sharp sign (#). The system is marked with a large number '4' at the beginning.

5

Handwritten musical score for system 5. The system consists of five measures. The top staff is in treble clef with a key signature of one flat (B-flat) and a common time signature. It features a melodic line with slurs and accents. The second staff from the top has a circled sharp sign (#) and contains a bass line with a slash. The third staff from the top has a circled sharp sign (#) and contains a bass line with a slash. The bottom staff contains a guitar part with a slash and a circled sharp sign (#). The system is marked with a large number '5' at the beginning.

Handwritten musical score for the first system, consisting of four staves. The notation includes complex chords with various accidentals (sharps, flats, naturals) and dynamic markings such as mp and fp . The first staff has a treble clef and a key signature of one sharp. The second staff has a soprano clef and a key signature of one sharp. The third staff has a soprano clef and a key signature of one sharp. The fourth staff has a bass clef and a key signature of one sharp. The music is written in a style that suggests a contemporary or experimental composition.

Handwritten musical score for the second system, consisting of four staves. The notation includes complex chords with various accidentals (sharps, flats, naturals) and dynamic markings such as fp and mp . The first staff has a treble clef and a key signature of one sharp. The second staff has a soprano clef and a key signature of one sharp. The third staff has a soprano clef and a key signature of one sharp. The fourth staff has a bass clef and a key signature of one sharp. The music is written in a style that suggests a contemporary or experimental composition. A large handwritten '6' is visible on the right side of the page.

Handwritten musical score for guitar, featuring a vertical bar across the first measure and various chord diagrams and dynamics.

Staff 1 (Guitar):

- Measure 1: Vertical bar with circled 'P' and 'D' symbols.
- Measure 2: Chord $\#p\ g\ b_2\ g$.
- Measure 3: Chord $b_2\ g\ b_2\ g$.
- Measure 4: Chord $\#p\ g\ b_2\ g$.
- Measure 5: Chord $b_2\ g\ b_2\ g$.
- Measure 6: Chord $\#p\ g\ b_2\ g$.
- Measure 7: Chord $b_2\ g\ b_2\ g$.

Staff 2 (Guitar):

- Measure 2: Chord $\#p\ g\ b_2\ g$.
- Measure 3: Chord $b_2\ g\ b_2\ g$.
- Measure 4: Chord $\#p\ g\ b_2\ g$.
- Measure 5: Chord $b_2\ g\ b_2\ g$.
- Measure 6: Chord $\#p\ g\ b_2\ g$.
- Measure 7: Chord $b_2\ g\ b_2\ g$.

Staff 3 (Guitar):

- Measure 2: Chord $\#p\ g\ b_2\ g$.
- Measure 3: Chord $b_2\ g\ b_2\ g$.
- Measure 4: Chord $\#p\ g\ b_2\ g$.
- Measure 5: Chord $b_2\ g\ b_2\ g$.
- Measure 6: Chord $\#p\ g\ b_2\ g$.
- Measure 7: Chord $b_2\ g\ b_2\ g$.

Staff 4 (Bass):

- Measure 1: Vertical bar.
- Measure 2: Chord $\#p\ g\ b_2\ g$.
- Measure 3: Chord $b_2\ g\ b_2\ g$.
- Measure 4: Chord $\#p\ g\ b_2\ g$.
- Measure 5: Chord $b_2\ g\ b_2\ g$.
- Measure 6: Chord $\#p\ g\ b_2\ g$.
- Measure 7: Chord $b_2\ g\ b_2\ g$.

Dynamics: f (forte) is indicated in measures 4, 5, 6, and 7 of the bass staff.

Handwritten musical score for guitar, featuring a vertical bar at the end of the piece.

Staff 1 (Guitar):

- Measure 1: Chord $\#p\ g\ b_2\ g$.
- Measure 2: Chord $b_2\ g\ b_2\ g$.
- Measure 3: Chord $\#p\ g\ b_2\ g$.
- Measure 4: Chord $b_2\ g\ b_2\ g$.
- Measure 5: Chord $\#p\ g\ b_2\ g$.
- Measure 6: Chord $b_2\ g\ b_2\ g$.
- Measure 7: Chord $\#p\ g\ b_2\ g$.
- Measure 8: Chord $b_2\ g\ b_2\ g$.

Staff 2 (Guitar):

- Measure 1: Chord $\#p\ g\ b_2\ g$.
- Measure 2: Chord $b_2\ g\ b_2\ g$.
- Measure 3: Chord $\#p\ g\ b_2\ g$.
- Measure 4: Chord $b_2\ g\ b_2\ g$.
- Measure 5: Chord $\#p\ g\ b_2\ g$.
- Measure 6: Chord $b_2\ g\ b_2\ g$.
- Measure 7: Chord $\#p\ g\ b_2\ g$.
- Measure 8: Chord $b_2\ g\ b_2\ g$.

Staff 3 (Guitar):

- Measure 1: Chord $\#p\ g\ b_2\ g$.
- Measure 2: Chord $b_2\ g\ b_2\ g$.
- Measure 3: Chord $\#p\ g\ b_2\ g$.
- Measure 4: Chord $b_2\ g\ b_2\ g$.
- Measure 5: Chord $\#p\ g\ b_2\ g$.
- Measure 6: Chord $b_2\ g\ b_2\ g$.
- Measure 7: Chord $\#p\ g\ b_2\ g$.
- Measure 8: Chord $b_2\ g\ b_2\ g$.

Staff 4 (Bass):

- Measure 1: Chord $\#p\ g\ b_2\ g$.
- Measure 2: Chord $b_2\ g\ b_2\ g$.
- Measure 3: Chord $\#p\ g\ b_2\ g$.
- Measure 4: Chord $b_2\ g\ b_2\ g$.
- Measure 5: Chord $\#p\ g\ b_2\ g$.
- Measure 6: Chord $b_2\ g\ b_2\ g$.
- Measure 7: Chord $\#p\ g\ b_2\ g$.
- Measure 8: Chord $b_2\ g\ b_2\ g$.

A thick vertical bar is drawn at the end of the piece, spanning all staves.

Handwritten musical score for the first system. It features a treble clef, a key signature of one sharp (F#), and a 3/4 time signature. The score consists of four staves. The top staff contains a melodic line with various notes and rests. The second staff has a bass line with notes and rests. The third and fourth staves contain rhythmic patterns and rests. There are several circled 'p' markings in the second and third staves.

Handwritten musical score for the second system. It features a treble clef, a key signature of one sharp (F#), and a 3/4 time signature. The score consists of four staves. The top staff contains a melodic line with various notes and rests. The second staff has a bass line with notes and rests. The third and fourth staves contain rhythmic patterns and rests. There are several circled 'p' markings in the second and third staves. A large black vertical bar is drawn across the right side of the system.

Handwritten musical score for a string quartet. The score is written on four staves. The top two staves are for violins and violas, and the bottom two are for cellos and double basses. The notation includes various notes, rests, and dynamic markings. There are circled 'H' and 'P' symbols. The piece ends with a double bar line.

Handwritten musical score for a string quartet, continuing from the previous page. The score is written on four staves. A large vertical bar is drawn across the staves. Annotations include "großes Mittelteil", "Pianos Solo", and "(4 Takte bis 12 Takte Solo (mit rit + clari))". There are circled "H" and "P" symbols. The piece ends with a double bar line.

10
folgt
(Teil 1 bis 6)
dann Teil 2
al f coda

COPP

Handwritten musical score for the first system. It features a treble clef, a key signature of one sharp (F#), and a 9/8 time signature. The score includes a vocal line with lyrics "COPP", a piano accompaniment with various chords and melodic lines, and a bass line with rhythmic notation. There are several circled annotations and a large blacked-out section on the right side.

Handwritten musical score for the second system. It features a treble clef, a key signature of one sharp (F#), and a 9/8 time signature. The score includes a vocal line with lyrics "COPP", a piano accompaniment with various chords and melodic lines, and a bass line with rhythmic notation. There are several circled annotations and a large blacked-out section on the right side.