

Musik für

Orgel und Sprecher

1972

(nach Bertolt Brecht)

v. A. Scherbaum

sehr langsam (auf Achtel)

Handwritten musical notation for the first system, featuring a treble clef, a 6/8 time signature, and a piano (pp) dynamic marking. The melody consists of quarter notes with various accidentals: G#4, A4, Bb4, C5, Bb4, A4, G#4, F#4. The bass line consists of dotted quarter notes: D4, D4, D4, D4.

Handwritten musical notation for the second system, continuing the melody and bass line from the first system. The melody includes notes Bb4, A4, G#4, F#4, and a dotted quarter note G#4. The bass line includes a dotted quarter note D4 and a quarter note D4 with a sharp sign.

Handwritten musical notation for the third system, featuring a treble clef and a 6/8 time signature. The melody consists of dotted quarter notes: G#4, A4, Bb4, C5, Bb4, A4, G#4, F#4. The bass line consists of dotted quarter notes: D4, D4, D4, D4. There are some additional markings like '47' and '97' near the notes.

Handwritten musical notation for the first system. The top staff is in treble clef and the bottom staff is in bass clef. The music consists of three measures. The first measure has a whole note chord in the treble and a whole note chord in the bass. The second and third measures have a half note chord in the treble and a half note chord in the bass. The notes are: Measure 1: Treble (A4, C5), Bass (F3, A2); Measure 2: Treble (G#4, B4), Bass (G2, B1); Measure 3: Treble (F4, A4), Bass (F2, A1).

Handwritten musical notation for the second system. The top staff is in treble clef and the bottom staff is in bass clef. The music consists of three measures. The first measure has a half note chord in the treble and a half note chord in the bass. The second measure has a half note chord in the treble and a half note chord in the bass. The third measure has a half note chord in the treble and a half note chord in the bass. The notes are: Measure 1: Treble (B4, D5), Bass (B1, D2); Measure 2: Treble (C5, E5), Bass (C2, E2); Measure 3: Treble (D5, F5), Bass (D2, F2).

großes git. ...

Handwritten musical notation for the third system. The top staff is in treble clef and the bottom staff is in bass clef. The music consists of three measures. The first measure has a half note chord in the treble and a half note chord in the bass. The second measure has a half note chord in the treble and a half note chord in the bass. The third measure has a half note chord in the treble and a half note chord in the bass. The notes are: Measure 1: Treble (E5, G5), Bass (E2, G2); Measure 2: Treble (F5, A5), Bass (F2, A2); Measure 3: Treble (G5, B5), Bass (G2, B2).

lange halten

FINE

Au See tief zwischen

Tann und Silberpappel -

Beschirmt von Mauer und

Gesträuch ein Garten +

so weise angelegt mit

monatlichen Blumen -

Daß er vom März bis zum

Oktober blüht.

Hier, in der Früh, nicht allzu
häufig, sitz ich —

Und wünsche mir, auch ich mög
allezeit —

In den verschiedenen Wettern,
guten, schlechten

Dies oder jenes Augenehne
zeigen.

sehr langsame Adagio

Handwritten musical notation for the first system. The treble clef staff contains two measures of music. The first measure has a whole note chord with a sharp sign above it, and the second measure has a whole note chord with a sharp sign above it. The bass clef staff contains two measures. The first measure has a whole rest, and the second measure has a whole note chord with a sharp sign above it. There are some handwritten annotations like '77' and '72' near the notes.

Handwritten musical notation for the second system. The treble clef staff contains two measures of music. The first measure has a whole note chord with a flat sign above it, and the second measure has a whole note chord with a flat sign above it. The bass clef staff contains two measures. The first measure has a whole rest, and the second measure has a whole note chord with a sharp sign above it.

Handwritten musical notation for the third system. The treble clef staff contains three measures of music, each with a whole note chord and a flat sign above it. The bass clef staff contains three measures of music, each with a whole note chord and a sharp sign above it.

2. x D.C.
al
Fine

Dies ist nun alles und ist
nicht genug —

Doch sagt es euch vielleicht,
ICH BIN NOCH DA.

Dem gleich' ich, der den
Backstein mit sich trug —
der Welt zu zeigen,
wie sein Haus aussah.

Maestoso (presente)

Handwritten musical notation for the first system. The treble clef staff contains a melodic line with notes and rests. The bass clef staff contains a bass line with notes and rests. The key signature has one sharp (F#) and the time signature is 4/4. A fermata is placed over the first measure of the bass line.

Handwritten musical notation for the second system. The treble clef staff continues the melodic line. The bass clef staff continues the bass line. A fermata is placed over the first measure of the bass line.

Handwritten musical notation for the third system. The treble clef staff concludes the melodic line. The bass clef staff concludes the bass line with a fermata over the final measure.

Im Hofe steht ein
Pflaumenbaum —

Der ist klein, man glaubt es kaum —

Er hat ein Gitter drum —

So tritt ihn keiner um. —

Der Kleine kann nicht
größer wer'n —

Ja, größer wer'n, das mücht er gerne —

Es ist keine Red' drum —

Er hat zu wenig Sonne.

Den Pflaumenbaum glaubt man
ihm kaum —

Weil er nie eine Pflaume hat —

Doch es ist ein Pflaumenbaum —

Man kennt es an dem Blatt.

sehr ruhig (flüsternd)

Handwritten musical notation for the first system. It consists of two staves: a treble clef staff and a bass clef staff. The time signature is 6/4. The key signature has one flat (B-flat). The first measure starts with a piano (pp) dynamic. The melody in the treble clef begins with a whole note B-flat, followed by quarter notes G and F. The bass clef part follows with quarter notes B-flat, G, and F. The second measure continues the melody with a whole note G and a half note G. The bass clef part continues with quarter notes E, D, and C. The system concludes with a fermata over the final notes.

Handwritten musical notation for the second system, continuing from the first. It consists of two staves. The treble clef staff has a melody with notes G, F, E, D, C, B, A, and G, mostly tied across measures. The bass clef staff continues the accompaniment with notes B, A, G, F, E, D, C, and B. The system ends with a fermata over the final notes.

Handwritten musical notation for the third system. The treble clef staff contains notes G, F, E, D, C, B, A, and G, with some notes tied or marked with 'z' for ornaments. The bass clef staff continues the accompaniment with notes B, A, G, F, E, D, C, and B. The system ends with a fermata over the final notes.

Au meiner Wand hängt ein
japanisches Holzwerk —

Maske eines bösen Dämons,
bemalt mit Goldlack —

Mitfühlend sehe ich —

Die geschwellenen Himmler,
undeutend —

Wie austreuend es ist,
böse zu sein.

Ressale (2 Schläge)

Handwritten musical score for the first system of "Ressale (2 Schläge)". It features a grand staff with three staves. The top staff is in treble clef, the middle in alto clef, and the bottom in bass clef. The key signature has one sharp (F#). The time signature is 6/4. The music consists of four measures with various rhythmic patterns and accidentals.

Handwritten musical score for the second system of "Ressale (2 Schläge)". It features a grand staff with three staves. The top staff is in treble clef, the middle in alto clef, and the bottom in bass clef. The key signature has one flat (Bb). The time signature is 6/4. The music consists of four measures with various rhythmic patterns and accidentals.

Handwritten musical score for the third system of "Ressale (2 Schläge)". It features a grand staff with three staves. The top staff is in treble clef, the middle in alto clef, and the bottom in bass clef. The key signature has one sharp (F#). The time signature is 6/4. The music consists of four measures with various rhythmic patterns and accidentals.

Handwritten musical score for the first system. The treble clef is on the top staff, and the bass clef is on the bottom staff. The key signature has one sharp (F#). The time signature is 3/4. The notation includes a melody line with slurs and ties, and a bass line with chords and a fermata. The piece concludes with a double bar line and a circled 'F'.

Handwritten musical score for the second system. The treble clef is on the top staff, and the bass clef is on the bottom staff. The notation includes a melody line with slurs and ties, and a bass line with chords and a fermata. The piece concludes with a double bar line and a circled 'F'. There are dynamic markings like 'p' and 'f' and a 'D.C.' instruction at the end.

Handwritten musical score for the third system. The treble clef is on the top staff, and the bass clef is on the bottom staff. The tempo marking 'Lento' is written above the treble staff. The notation includes a melody line with slurs and ties, and a bass line with chords and a fermata. The piece concludes with a double bar line and a circled 'Fuge'.

Das kleine Haus unter
Bäumen am See —

Vom Dach steigt Rauch —

Fehlte er —

Wie trostlos dann wären —

Haus Bäume und See.

sehr ruhige Andante

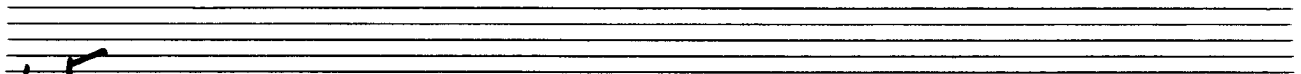
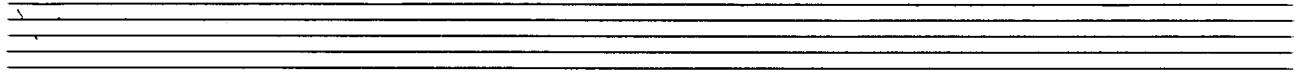
pp

Handwritten musical notation for the first system. The treble staff contains a melodic line with a slur over the first two measures and a fermata over the final note. The bass staff provides accompaniment. A circled cross symbol is at the end of the system.

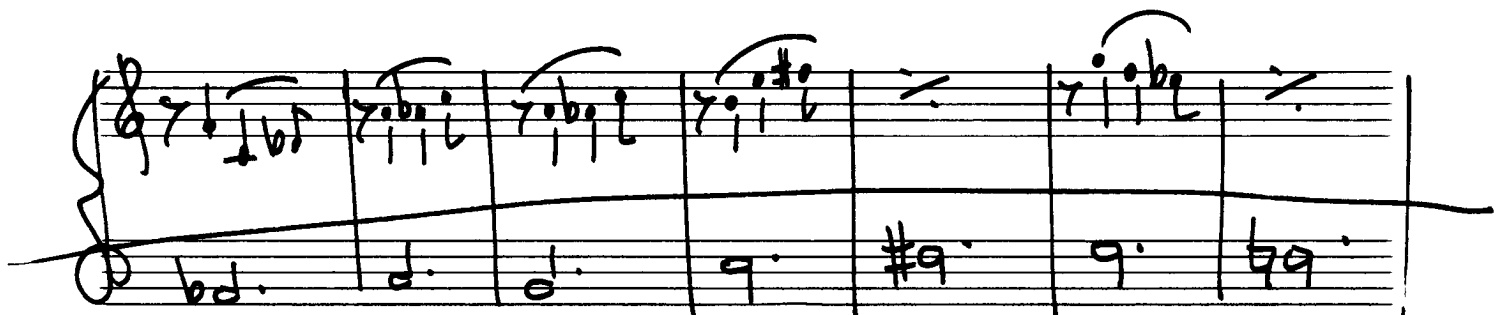
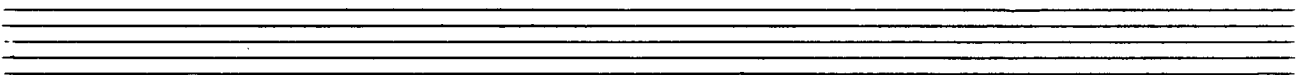
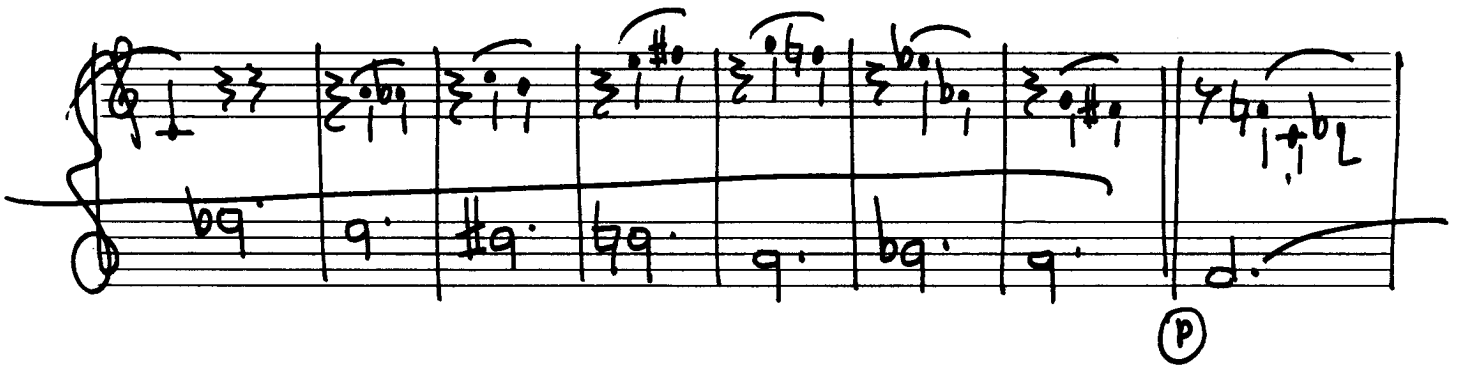
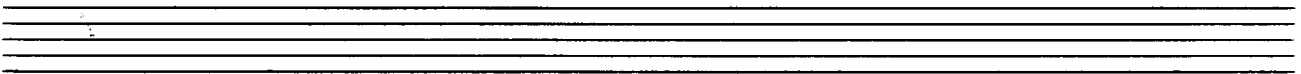
Handwritten musical notation for the second system. The treble staff continues the melodic line with a slur. The bass staff continues the accompaniment. A circled cross symbol is at the end of the system.

Handwritten musical notation for the third system. The treble staff has a slur over the first two measures. The bass staff includes performance instructions: "2.+", "D.C.", and "2.+ rit". A circled cross symbol is at the end of the system.

Handwritten musical notation for the fourth system. The treble staff has a slur over the first two measures. The bass staff includes the instruction "Lunga!". The system ends with a circled "fine" and a double bar line.



lento



Handwritten musical notation for the first system. The treble clef staff contains two measures of chords. The first measure has a chord with notes G4, A4, B4, and C5, with a flat sign above the staff. The second measure has a chord with notes G4, A4, B4, and C5, with a flat sign above the staff. The bass clef staff contains a single note G2 in the first measure and a whole note G2 in the second measure.

Handwritten musical notation for the second system. The treble clef staff contains two measures of chords. The first measure has a chord with notes G4, A4, B4, and C5, with a sharp sign above the staff. The second measure has a chord with notes G4, A4, B4, and C5, with a flat sign above the staff. The bass clef staff contains a single note G2 in the first measure and a whole note G2 in the second measure.

Handwritten musical notation for the third system. The treble clef staff contains two measures of chords. The first measure has a chord with notes G4, A4, B4, and C5, with a flat sign above the staff. The second measure has a chord with notes G4, A4, B4, and C5, with a flat sign above the staff. The bass clef staff contains a single note G2 in the first measure and a whole note G2 in the second measure.

Handwritten musical notation for the fourth system. The treble clef staff contains two measures of chords. The first measure has a chord with notes G4, A4, B4, and C5, with a flat sign above the staff. The second measure has a chord with notes G4, A4, B4, and C5, with a flat sign above the staff. The bass clef staff contains a single note G2 in the first measure and a whole note G2 in the second measure.

Handwritten musical notation for the fifth system. The treble clef staff contains a melodic line with a circled sharp sign at the beginning. The bass clef staff contains a single note G2 in the first measure and a whole note G2 in the second measure.

Handwritten musical notation for the sixth system. The treble clef staff contains a melodic line with a circled sharp sign at the beginning. The bass clef staff contains a single note G2 in the first measure and a whole note G2 in the second measure.

Handwritten musical notation for the first system, featuring a treble clef, a key signature of one sharp (F#), and a 9/8 time signature. The right hand has three measures of sixteenth-note chords, and the left hand has a single dotted quarter note. A slur covers the entire system.

Handwritten musical notation for the second system, similar to the first, with a treble clef, one sharp key signature, and 9/8 time signature. The right hand has three measures of sixteenth-note chords, and the left hand has a single dotted quarter note. A slur covers the entire system.

Handwritten musical notation for the third system, with a treble clef, one sharp key signature, and 9/8 time signature. The right hand has three measures of sixteenth-note chords, and the left hand has a single dotted quarter note. A slur covers the entire system.

Handwritten musical notation for the fourth system, with a treble clef, one sharp key signature, and 9/8 time signature. The right hand has three measures of sixteenth-note chords, and the left hand has a single dotted quarter note. A slur covers the entire system.

Handwritten musical notation for the fifth system, with a treble clef, one sharp key signature, and 9/8 time signature. The right hand has three measures of sixteenth-note chords, and the left hand has a single dotted quarter note. A slur covers the entire system.

Handwritten musical notation for the sixth system, with a treble clef, one sharp key signature, and 9/8 time signature. The right hand has three measures of sixteenth-note chords, and the left hand has a single dotted quarter note. A slur covers the entire system.

Handwritten musical notation on a grand staff. The right hand contains three measures of sixteenth-note runs. The left hand contains a single note, b^9 .

Handwritten musical notation on a grand staff. The right hand contains three measures of sixteenth-note runs. The left hand contains a single note, b^d .

Handwritten musical notation on a grand staff. The right hand contains three measures of sixteenth-note runs. The left hand contains a single note, d .

Handwritten musical notation on a grand staff. The right hand contains three measures of sixteenth-note runs. The left hand contains a single note, $\#d$.

Handwritten musical notation on a grand staff. The right hand contains three measures of sixteenth-note runs. The left hand contains a single note, b^d . The word "rit." is written below the right hand.

Handwritten musical notation on a grand staff. The right hand contains two measures of chords. The left hand contains a single note, d . The word "Pesante" is written below the right hand.

Handwritten musical notation for the first system, featuring treble and bass staves with chords and melodic lines.

Handwritten musical notation for the second system, continuing the piece with various chordal textures.

Handwritten musical notation for the third system, showing more complex harmonic structures.

Handwritten musical notation for the fourth system, including melodic phrases and chordal accompaniment.

Handwritten musical notation for the fifth system, with the instruction "großes mit..." written below.

Handwritten musical notation for the sixth system, ending with a circled signature "Inge".