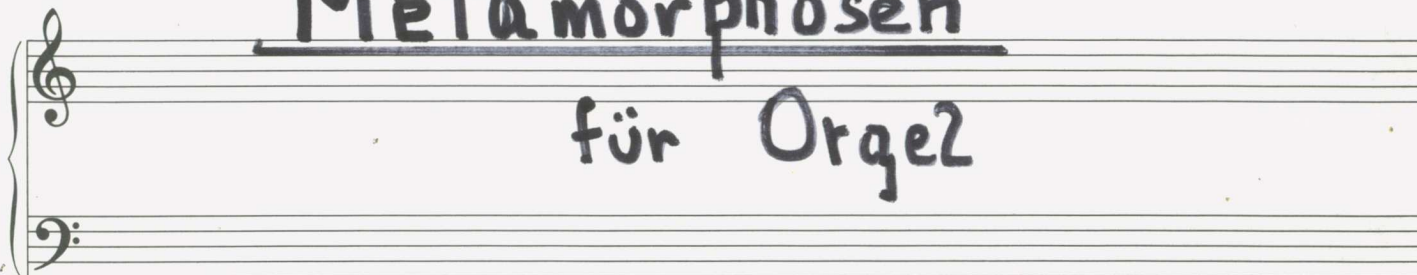


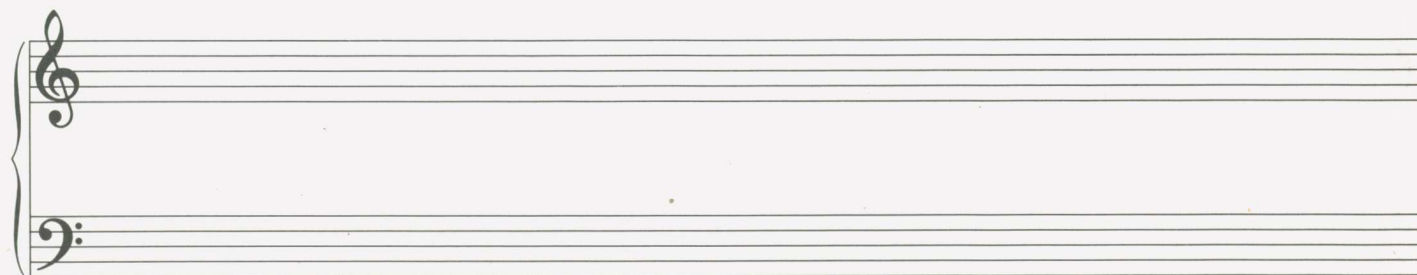
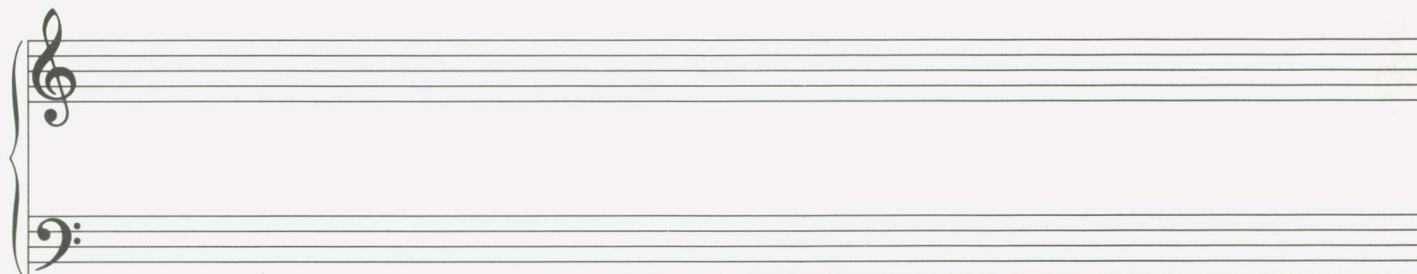
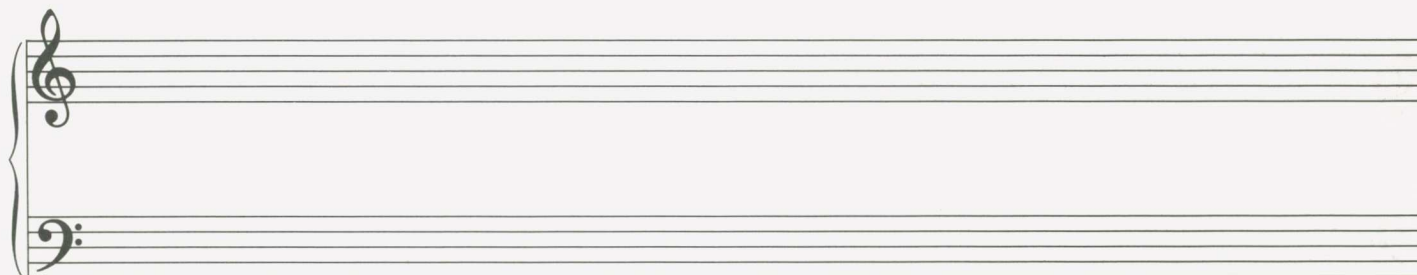


Metamorphosen
für Orgel



A. Scherbaum

1973



Ruhig schreitend (♩)

Handwritten musical score for the first system. The treble clef staff begins with a treble clef, a common time signature, and a dynamic marking of *mp*. The bass clef staff starts with a bass clef and a common time signature. The music consists of several measures with notes, rests, and dynamic markings. A first ending bracket is present in the second measure of the bass staff.

Handwritten musical score for the second system. The treble clef staff continues with notes and rests. The bass clef staff features a first ending bracket in the first measure and a fermata over a note in the final measure.

Handwritten musical score for the third system. The treble clef staff includes a dynamic marking of *p* in the first measure. The bass clef staff has a first ending bracket in the first measure and a fermata over a note in the final measure.

Handwritten musical score for the fourth system. The treble clef staff contains notes and rests. The bass clef staff has a first ending bracket in the first measure and a fermata over a note in the final measure.

Handwritten musical score for the fifth system. The treble clef staff has notes and rests. The bass clef staff has a first ending bracket in the first measure and a fermata over a note in the final measure.

Handwritten musical score for the sixth system. The treble clef staff includes a dynamic marking of *mf* in the first measure. The bass clef staff has a first ending bracket in the first measure and a fermata over a note in the final measure.

Handwritten musical notation for the first system. The treble clef staff contains a melodic line with eighth and sixteenth notes, including a trill. The bass clef staff contains a bass line with a whole note chord and a half note. The key signature has one sharp (F#).

Handwritten musical notation for the second system. The treble clef staff features triplets of eighth notes. The bass clef staff contains a bass line with a whole note chord and a half note. The key signature has one sharp (F#).

Handwritten musical notation for the third system. The treble clef staff contains a melodic line with a trill. The bass clef staff contains a bass line with a whole note chord and a half note. The key signature has one sharp (F#).

Handwritten musical notation for the fourth system. The treble clef staff contains a melodic line with a trill. The bass clef staff contains a bass line with a whole note chord and a half note. The key signature has one sharp (F#).

Handwritten musical notation for the fifth system. The treble clef staff features triplets of eighth notes. The bass clef staff contains a bass line with a whole note chord and a half note. The key signature has one sharp (F#).

Handwritten musical notation for the sixth system. The treble clef staff contains a melodic line with a trill. The bass clef staff contains a bass line with a whole note chord and a half note. The key signature has one sharp (F#).

neuner-notenschreibpapiere, 6x2 systeme, 1011

Handwritten musical notation for the first system. The right hand features a melodic line with a triplet of eighth notes (B-flat, A-flat, G-flat) and a fermata over a B-flat. The left hand has a whole note chord (F#) and a triplet of eighth notes (G-flat, F, E-flat).

Handwritten musical notation for the second system. The right hand continues the melodic line with a triplet of eighth notes (F#, E-flat, D) and a fermata over a D. The left hand has a whole note chord (F#) and a triplet of eighth notes (D, C#, B).

Handwritten musical notation for the third system. The right hand features a melodic line with a triplet of eighth notes (D, C#, B) and a fermata over a B. The left hand has a whole note chord (F#) and a triplet of eighth notes (B, A, G).

Handwritten musical notation for the fourth system. The right hand has a melodic line with a fermata over a B. The left hand has a whole note chord (F#) and a fermata over a B. The system includes a dynamic marking of *mf*.

Handwritten musical notation for the fifth system. The right hand has a melodic line with a fermata over a B. The left hand has a whole note chord (F#) and a fermata over a B.

Handwritten musical notation for the sixth system. The right hand has a melodic line with a fermata over a B. The left hand has a whole note chord (F#) and a fermata over a B. The system includes a dynamic marking of *p*.

rubato (erect)

Handwritten musical notation for the first system, featuring a grand staff with treble and bass clefs. The music includes a large slur over the first two measures and various accidentals (sharps and naturals) on the notes. The bass clef has a '4' written below it.

Handwritten musical notation for the second system. The treble clef has a '2' and the bass clef has a '4'. The word 'legg.' is written above the bass clef. A circled 'p' is written below the bass clef. The music consists of eighth and sixteenth notes with various accidentals.

Handwritten musical notation for the third system. The treble clef has a '9' and the bass clef has a '9'. The music features eighth notes and rests, with various accidentals and slurs.

Handwritten musical notation for the fourth system. The treble clef has a '9' and the bass clef has a '9'. The music consists of eighth notes and rests, with various accidentals and slurs.

Handwritten musical notation for the fifth system. The treble clef has a '#9' and the bass clef has a '9'. The music includes a large slur over the first three measures and various accidentals. The word 'rit' is written above the bass clef.

Handwritten musical notation for the sixth system. The treble clef has the word 'bewegten (a.cel)' and an arrow pointing right. The bass clef has the word 'accel.' and an arrow pointing right. The music features eighth notes and rests with various accidentals.

Allegro con brio (2te ff)

The image shows a handwritten musical score for organ, consisting of six systems of staves. The first system includes a piano (p) dynamic marking. The second system includes a forte (f) dynamic marking. The third system includes a fortissimo (ff) dynamic marking. The fourth system includes a mezzo-forte (mf) dynamic marking. The fifth system includes a piano (p) dynamic marking. The sixth system includes a piano (p) dynamic marking. The score is written in a major key with a 2/4 time signature.

Presto

7

appassionata (frei)

G1
P.

ff
rubato
accel.

Presto

poco rit.

immer breiter werden —

Handwritten musical score for the first system. The treble staff contains complex chordal textures with many sharps and naturals, and a wavy line indicating a tremolo or rapid oscillation. The bass staff features a melodic line with eighth notes and some accidentals.

Handwritten musical score for the second system. The treble staff has complex chords and a wavy line. The bass staff has a melodic line with many flats. A marking "gr. rit." (grand ritardando) is present. A first ending bracket labeled "1" spans the final measures.

Handwritten musical score for the third system, marked "frei) appassionata". The treble staff has a melodic line with slurs and some accidentals. The bass staff has a melodic line with slurs and some accidentals.

Handwritten musical score for the fourth system, marked "ADAGIO" and "pp (sehr langsam)". The treble staff has a melodic line with slurs and some accidentals. The bass staff has a melodic line with slurs and some accidentals.

Handwritten musical score for the fifth system. The treble staff has a large slur over the notes, with some accidentals. The bass staff has a melodic line with slurs and some accidentals.

Handwritten musical score for the sixth system. The treble staff has a melodic line with slurs and some accidentals. The bass staff has a melodic line with slurs and some accidentals. A first ending bracket is present at the end.

Handwritten musical notation, first system. Treble clef, 4/4 time signature. Key signature: one sharp (F#). The system contains four measures. The first measure has a treble clef, a key signature change to one sharp, and a common time signature. The bass line consists of eighth notes. The second measure has a treble clef and a common time signature. The third measure has a treble clef and a common time signature. The fourth measure has a treble clef and a common time signature.

Handwritten musical notation, second system. Treble clef, 4/4 time signature. The system contains four measures. The first measure has a treble clef and a common time signature. The second measure has a treble clef and a common time signature. The third measure has a treble clef and a common time signature. The fourth measure has a treble clef and a common time signature.

Handwritten musical notation, third system. Treble clef, 4/4 time signature. The system contains four measures. The first measure has a treble clef and a common time signature. The second measure has a treble clef and a common time signature. The third measure has a treble clef and a common time signature. The fourth measure has a treble clef and a common time signature.

Handwritten musical notation, fourth system. Treble clef, 4/4 time signature. The system contains four measures. The first measure has a treble clef and a common time signature. The second measure has a treble clef and a common time signature. The third measure has a treble clef and a common time signature. The fourth measure has a treble clef and a common time signature.

Handwritten musical notation, fifth system. Treble clef, 4/4 time signature. The system contains four measures. The first measure has a treble clef and a common time signature. The second measure has a treble clef and a common time signature. The third measure has a treble clef and a common time signature. The fourth measure has a treble clef and a common time signature.

Handwritten musical notation, sixth system. Treble clef, 4/4 time signature. The system contains four measures. The first measure has a treble clef and a common time signature. The second measure has a treble clef and a common time signature. The third measure has a treble clef and a common time signature. The fourth measure has a treble clef and a common time signature.

neuner-notenschreibpapiere, 6x2 systeme, 1011

Ku
G.p.

Allegro con brio

Handwritten musical notation for the first system. The treble clef staff begins with a treble clef, a common time signature 'C', and a dynamic marking 'pp'. The music consists of several measures with notes, rests, and accidentals. A slur covers the first two measures, and an accent (^) is placed over a note in the second measure. The bass clef staff contains rests for the first two measures.

Handwritten musical notation for the second system. Both staves contain complex rhythmic patterns and accidentals. The treble staff has a slur over the first two measures. The bass staff has a slur over the first two measures.

Handwritten musical notation for the third system. The treble staff has a slur over the first two measures. The bass staff has a slur over the first two measures. There are various note values and accidentals throughout the system.

Handwritten musical notation for the fourth system. The treble staff features a mix of eighth and sixteenth notes. The bass staff has a slur over the first two measures.

Handwritten musical notation for the fifth system. Both staves show melodic lines with various note values and accidentals. The treble staff has a slur over the first two measures.

Handwritten musical notation for the sixth system. The treble staff has a slur over the first two measures. The bass staff has a slur over the first two measures. The system concludes with a final cadence. A handwritten number '11' is visible in the bottom right corner.

Handwritten musical notation for the first system, featuring a treble and bass clef with various notes and accidentals.

Handwritten musical notation for the second system, including a piano (*p*) dynamic marking and complex rhythmic patterns.

Handwritten musical notation for the third system, showing a transition in the bass line with a fermata.

Handwritten musical notation for the fourth system, characterized by dense sixteenth-note passages in the treble.

Handwritten musical notation for the fifth system, featuring a forte (*f*) dynamic marking and a "meno" instruction.

Handwritten musical notation for the sixth system, including a "rit." (ritardando) marking and a final cadence.

sehr breit (♩)

Handwritten musical score for the first system, featuring a treble and bass clef with a 4/4 time signature. The music consists of several measures of chords and single notes. A circled '77' is written in the lower left corner.

Handwritten musical score for the second system, continuing the piece with similar chordal textures in both hands.

Handwritten musical score for the third system, showing a change in texture with more complex chordal structures and some ledger lines in the bass clef.

Handwritten musical score for the fourth system, including a section with a treble clef and a 4/4 time signature. It features a large signature 'Adolf Scherbaum' and the year '1973'. The word 'lunga' is written near the bottom left.