

L. BEETHOVEN



W. A. MOZART



NOTENHEFT

F. SCHUBERT



J. HAYDN



J. STRAUSS



FLIPART

Kantate 1943

für gemischten ev. Chor (Solo)
und Orchester

(Text: (Die dunkle Wolke)

Scheidelied aus der Zeit
des Dreißigjährigen Krieges (1646)

Besetzung:

3 Fagotten (Klar.)

3 Oboen

3 Fagotte

3 Trompeten (im Bassbereich)

3 Posunen

8-10 Hörner
6-8 Waldhörner
5-6 Basshörner

Schlagwerk

sehr langsam I.

1 Flöten
2+3

1 Oboen
2+3

Streicher

2 Trompeten
in C

3 Hörner

Bratschen (in D) *(in D)*

Celli + Bass

Holzbock

gemischter Chor

(p) *(f)* *(sf)*

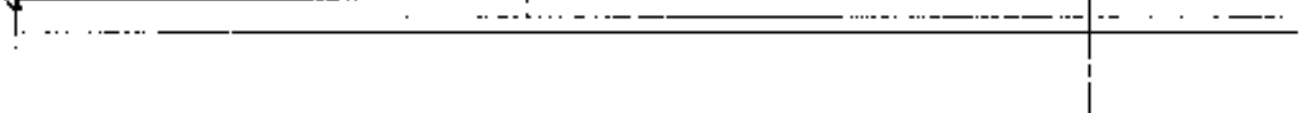
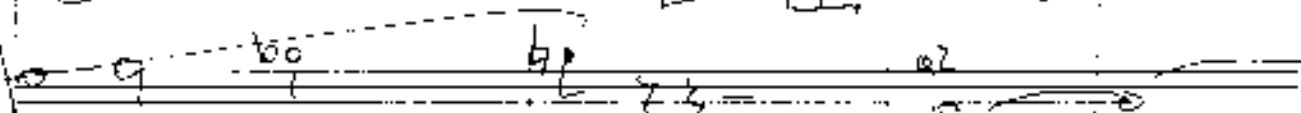
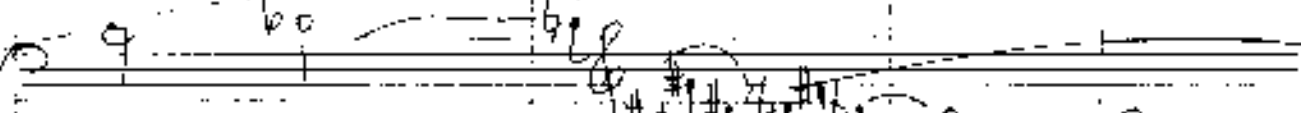
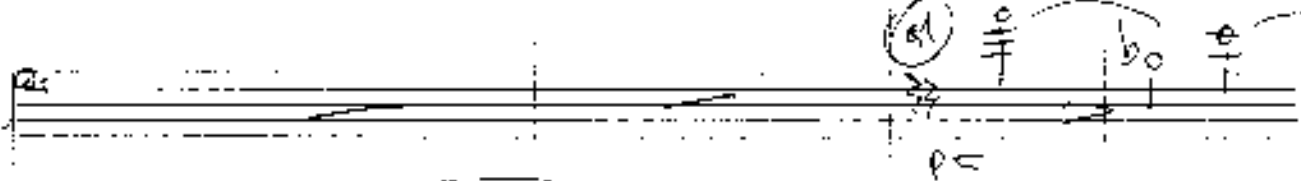
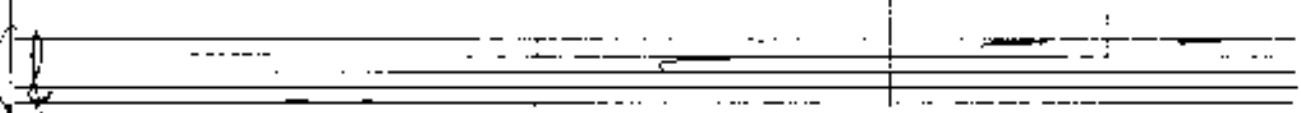
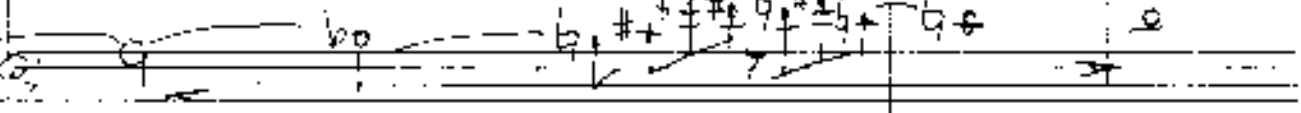
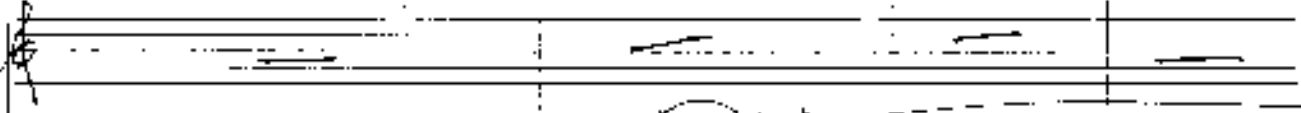
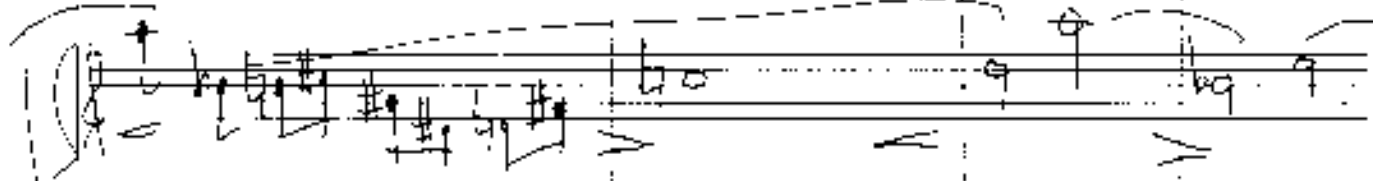
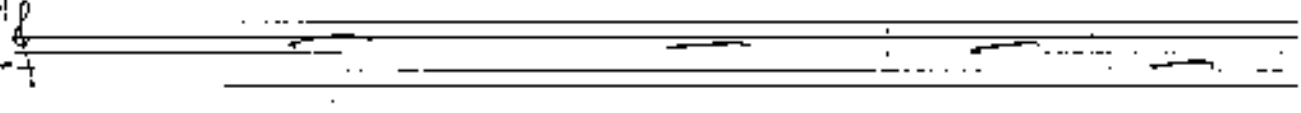
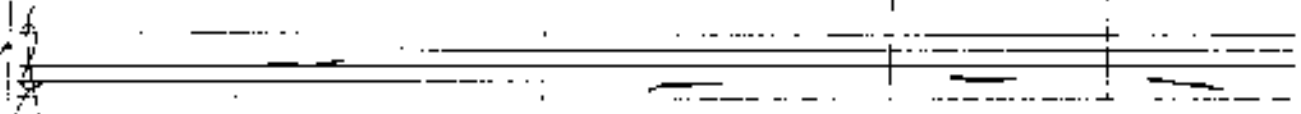
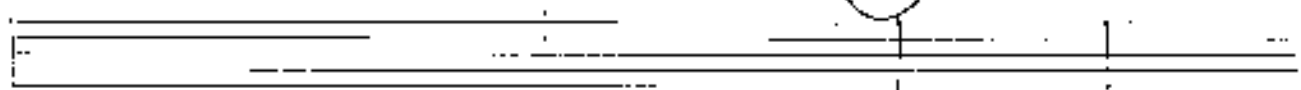


Handwritten musical notation on a grand staff. The top staff contains a circled symbol. The middle two staves show a melodic line with various notes, including accidentals (sharps and flats) and slurs. The bottom staff contains rhythmic markings, including a treble clef, a sharp sign, and a series of rhythmic notations (possibly '4444') and accidentals (sharps and flats).

Handwritten musical notation on a grand staff. The top staff shows a treble clef, a sharp sign, and rhythmic markings ('4444'). The middle two staves show a melodic line with notes, accidentals, and slurs. The bottom staff contains rhythmic markings and accidentals.

This image shows a handwritten musical score for a piano piece. The score is written on multiple staves, with some sections grouped by a large curly brace on the left. The notation includes various notes, rests, and dynamic markings such as *p* (piano) and *pp* (pianissimo). There are also circled numbers (1, 2, 3) and some handwritten annotations. The score is divided into measures by vertical bar lines, and some notes are connected by slurs. The handwriting is clear and legible, typical of a composer's draft.

2



3

Handwritten musical score for a string quartet, measures 1-6. The score is written on four staves, with the first two staves grouped by a brace on the left. The music is in a key with two sharps (F# and C#) and a common time signature. Measure 1 contains a whole note chord of F# and C# in the first two staves. Measure 2 contains a whole note chord of F# and C# in the first two staves, with a dynamic marking of *pp*. Measure 3 contains a whole note chord of F# and C# in the first two staves, with a dynamic marking of *pp*. Measure 4 contains a whole note chord of F# and C# in the first two staves, with a dynamic marking of *pp*. Measure 5 contains a whole note chord of F# and C# in the first two staves, with a dynamic marking of *pp*. Measure 6 contains a whole note chord of F# and C# in the first two staves, with a dynamic marking of *pp*. The score includes various musical notations such as notes, rests, and dynamic markings.

Handwritten musical notation for the first system. It features a treble clef staff with a melodic line and a grand staff below it for piano accompaniment. The notation includes various notes, rests, and dynamic markings.

Handwritten musical notation for the second system. It consists of a grand staff with piano accompaniment and a treble clef staff with notes. The notes are marked with a circled '3' and a 'p' dynamic marking.

Handwritten musical notation for the third system. It features a treble clef staff with a melodic line and a grand staff below it for piano accompaniment. The notation includes various notes, rests, and dynamic markings.

Handwritten musical notation for the fourth system. It consists of a grand staff with piano accompaniment and a treble clef staff with notes. The notes are marked with a circled '2' and a 'p' dynamic marking.

Handwritten musical notation for the fifth system. It includes a vocal line with lyrics and a grand staff with piano accompaniment. The lyrics are: "Es geht dunkel und feinst und nicht wird im Regen". The notation includes various notes, rests, and dynamic markings.

Handwritten musical score for piano and voice. The score is written on four systems of staves. The first system shows the piano introduction with treble and bass clefs. The second system continues the piano accompaniment with circled '1' and '2' markings. The third system shows the vocal line with lyrics "sein ein Finger aus dem Wald" and piano markings "p" and "f". The fourth system continues the piano accompaniment with circled "p" and "f" markings.

4

Handwritten musical score for a piano piece, numbered 4. The score is written on ten staves, with the first four staves grouped by a brace on the left. The notation includes treble and bass clefs, various note values (quarter, eighth, sixteenth notes), rests, and dynamic markings such as 'f' (forte) and 'mf' (mezzo-forte). There are also circled annotations and slurs throughout the piece. The bottom two staves contain lyrics in German: 'Kee' and 'wohl in das grüne Gras'.

Probes mit...

Handwritten musical score for a string quartet, consisting of four staves. The notation includes notes, rests, and dynamic markings such as *pp* and *ppp*. The score is divided into measures by vertical bar lines. The first staff contains a melodic line with notes and rests, including a circled measure. The second and third staves contain similar melodic lines. The fourth staff contains a bass line with notes and rests. The score is enclosed in a large, hand-drawn bracket on the right side.

Solo breit-

II.

Handwritten musical score for a solo section. The score is written on ten staves, grouped into three systems. The instruments are labeled on the left: 3 Flöten (Flutes), 3 Oboen (Oboes), 3 Fagotte (Bassoons), 3 Trompeten (Trumpets), 3 Trombonen (Trumpets), Bb (Baritone), C/B (Cornet/Bassoon), and Schlagwerk (Percussion). The percussion part includes a section labeled 'CHOR' and 'Schlagwerk' with notes and rests. The score features various musical notations including notes, rests, accidentals (sharps, flats, naturals), and dynamic markings (ff, sf). The notation is dense and appears to be a working draft or a specific performance arrangement.

1

Handwritten musical score for piano and strings. The score consists of several staves. The top two staves are for the right hand, and the bottom two are for the left hand. The music is in a key with one sharp (F#) and a common time signature (C). The score includes various musical notations such as notes, rests, and dynamic markings. A circled '1' is written at the top. A box containing the word 'FINE' is written on the third staff. The instruction 'ETWAS BEWEGTER' is written on the fifth staff. The left hand part includes a section marked '2te Zeit' and 'erst'.

Schleier

Handwritten musical score for a choir. The score is written on two staves. The top staff is for the vocal line, and the bottom staff is for the accompaniment. The music is in a key with one sharp (F#) and a common time signature (C). The lyrics are written below the notes. A circled '1' is written above the second measure of the vocal line. The lyrics are: "und künnt du liebe Sonne nicht hold so". Below the first staff, there are handwritten notes: "Es geht an die Welt hinein".

wenig - all's in finnen wald:

2

Handwritten musical notation for the first system. It features a treble clef and a circled number '2'. The notation includes several notes with accidentals (sharps and naturals) and some dynamic markings like 'p'.

Handwritten musical notation for the second system, continuing the piece with a treble clef and a circled '2'.

Handwritten musical notation for the third system, featuring a treble clef and circled numbers '2' and '3'.

Handwritten musical notation for the fourth system, showing a treble clef and circled numbers '2' and '3'.

Handwritten musical notation for the fifth system, including a treble clef, circled numbers '2' and '3', and a '1/2' marking.

CHOR

Handwritten musical notation for the chorus section. The lyrics are: "und alle die müden Bienen die haben - müden Bienen die". The notation includes a treble clef, a circled 'p', and various notes.

und alle die müden
14

Handwritten musical notation on two staves. The upper staff contains a melodic line with a slur and a fermata. The lower staff contains a bass line with a slur and a fermata. The notes in the upper staff are $\text{f}^{\#}, \text{g}^{\#}, \text{a}^{\#}, \text{b}^{\#}, \text{c}^{\#}, \text{d}^{\#}, \text{e}^{\#}$.

Handwritten musical notation on two staves. The upper staff has a melodic line with a slur and a fermata. The lower staff has a bass line with a slur and a fermata.

Handwritten musical notation on two staves. The upper staff has a melodic line with a slur and a fermata. The lower staff has a bass line with a slur and a fermata. A circled number '3' is written above the second measure of the upper staff.

2x
D.C.
al fine
(mit gr. zeit...)

Handwritten musical notation on two staves. The upper staff has a melodic line with a slur and a fermata. The lower staff has a bass line with a slur and a fermata. Dynamics markings pp are present. Circled numbers '1' and '2' are written above the first and second measures of the upper staff.

Handwritten musical notation on two staves. The upper staff has a melodic line with a slur and a fermata. The lower staff has a bass line with a slur and a fermata.

Handwritten musical notation on two staves. The upper staff has a melodic line with a slur and a fermata. The lower staff has a bass line with a slur and a fermata. The word "Tod" is written above the first measure of the upper staff.

die haben münden fort

Allegro con brio 1+p 3+p 4+p 2+p 7+p 4+p 7+p ||| Allegro con brio
 26 pagine alla meglio

1
 2+3
 (P)
 (23)
 UWS.
 (2+3)
 mit Piccolo

wie Flöte 1
 wie Oboe 1/aber
 nur das 2+4x

(P)
 (23)
 (P)

(P)
 (23)
 (P)

(P) piz
 (P) piz

mit 2+4 x Chor und Haupt des Lied
 dann mit faldel

1

Handwritten musical notation for the first system. The treble clef staff contains a series of chords with stems pointing upwards, some marked with '+' signs. The bass clef staff contains rhythmic patterns with stems pointing downwards.

Two empty musical staves for the second system.

Handwritten musical notation for the third system. The treble clef staff has notes with stems pointing upwards, some with '+' signs. The bass clef staff has notes with stems pointing downwards.

Two empty musical staves for the fourth system.

Handwritten musical notation for the fifth system. The treble clef staff has notes with stems pointing upwards, some with '+' signs. The bass clef staff has notes with stems pointing downwards.

Two empty musical staves for the sixth system.

Handwritten musical notation for the seventh system, including lyrics: "ni sacer altis in World". The treble clef staff has notes with stems pointing upwards, and the bass clef staff has notes with stems pointing downwards.

mel all die sünden Ble - me

2

Handwritten musical notation for the first system. The piano part consists of chords in the left hand and a melodic line in the right hand. The treble clef staff contains a series of notes, some beamed together, with a circled '2' above it.

Handwritten musical notation for the second system. The piano part shows chords in the left hand. The treble clef staff is mostly blank, with some faint lines and a few notes.

Handwritten musical notation for the third system. The piano part consists of chords in the left hand. The treble clef staff contains a melodic line with several notes and a slur.

Handwritten musical notation for the fourth system. The piano part consists of chords in the left hand. The treble clef staff contains a melodic line with several notes and a slur.

Handwritten musical notation for the fifth system. The piano part consists of chords in the left hand. The treble clef staff contains a melodic line with several notes and a slur.

— er und alle die sünden Ble — men die

Handwritten musical notation for the sixth system. The piano part consists of chords in the left hand. The treble clef staff contains a vocal line with lyrics: "— er und alle die sünden Ble — men die".

Handwritten musical score for piano and voice. The piano part consists of six staves. The first staff has a treble clef and a key signature of one sharp (F#). The second and third staves are grouped with a brace on the left. The fourth and fifth staves are grouped with a brace on the left. The sixth staff is a bass clef. The score includes various musical notations such as notes, rests, and dynamic markings like 'p' and 'f'. There are also some handwritten annotations like '44' and '47' near the first two staves.

Handwritten musical score for voice. It consists of two staves, a treble clef on the top and a bass clef on the bottom. The lyrics "selven", "miden", and "tod" are written above the notes. The notes are simple quarter and eighth notes.

24 * Cuor

sehr breit

IV

Handwritten musical notation for the first system, featuring a treble clef and a key signature of one sharp (F#). The notes are: F#4, A4, B4, C5, B4, A4, G#4, F#4. A slur covers the first three notes, and another slur covers the last three. A handwritten note "(2 Flöten)" is written below the first two notes, with a downward arrow pointing to the first note and an upward arrow pointing to the second note. The system concludes with a double bar line and a repeat sign.

Handwritten musical notation for the second system, featuring a treble clef and a key signature of one sharp (F#). The notes are: F#4, A4, B4, C5, B4, A4, G#4, F#4. A slur covers the first three notes, and another slur covers the last three. A handwritten note "wie Felsen" is written above the first two notes. The system concludes with a double bar line and a repeat sign.

Handwritten musical notation for the third system, featuring a treble clef and a key signature of one sharp (F#). The notes are: F#4, A4, B4, C5, B4, A4, G#4, F#4. A slur covers the first three notes, and another slur covers the last three. A handwritten note "(26+23)" is written above the first two notes. The system concludes with a double bar line and a repeat sign.

Handwritten musical notation for the fourth system, featuring a treble clef and a key signature of one sharp (F#). The notes are: F#4, A4, B4, C5, B4, A4, G#4, F#4. A slur covers the first three notes, and another slur covers the last three. The system concludes with a double bar line and a repeat sign.

Handwritten musical notation for the fifth system, featuring a treble clef and a key signature of one sharp (F#). The notes are: F#4, A4, B4, C5, B4, A4, G#4, F#4. A slur covers the first three notes, and another slur covers the last three. A handwritten note "2 Flöten" is written above the first two notes. The system concludes with a double bar line and a repeat sign.

Handwritten musical score for the first system. It consists of five staves. The top staff is a vocal line with a treble clef and a key signature of one sharp (F#). The second staff is a piano accompaniment with a grand staff (treble and bass clefs). The third and fourth staves are guitar accompaniment, with the third staff in treble clef and the fourth in bass clef. The music is written in a simple, sketchy style.

Handwritten musical score for the second system. It consists of two staves. The top staff is a vocal line with a treble clef and a key signature of one sharp (F#). The bottom staff is a piano accompaniment with a grand staff (treble and bass clefs). The music is written in a simple, sketchy style.

deutsch es wird ein Regen sein ein Regen aus den Wolken

Handwritten musical score for the third system. It consists of two staves. The top staff is a vocal line with a treble clef and a key signature of one sharp (F#). The bottom staff is a piano accompaniment with a grand staff (treble and bass clefs). The lyrics are written above the vocal line.

Handwritten musical notation for the first system. The treble clef staff contains notes: $\#c'$, a , b , $\#a'$, g , b , $\#c'$, e , f , $\#c'$, e . The bass clef staff has four upward-pointing stems corresponding to the first four notes of the treble staff.

Handwritten musical notation for the second system, showing a grand staff with diagonal lines across the staves, possibly indicating a section to be omitted or a specific performance instruction.

Handwritten musical notation for the third system. The treble clef staff contains notes: c' , b , a , $\#c'$, $\#c'$. The bass clef staff contains notes: c , b , a , $\#c$, $\#c$.

Handwritten musical notation for the fourth system, showing a grand staff with notes and accidentals. The treble clef staff contains notes: $\#c'$, a , b , $\#a'$, g , b , $\#c'$, e , f , $\#c'$, e . The bass clef staff contains notes: c , b , a , $\#c$, $\#c$.

Handwritten musical notation for the fifth system. The treble clef staff contains notes: $\#c'$, a , b , $\#a'$, g , b , $\#c'$, e , f , $\#c'$, e . The bass clef staff contains notes: c , b , a , $\#c$, $\#c$.

Handwritten musical notation for the sixth system, showing a grand staff with notes and accidentals. The treble clef staff contains notes: $\#c'$, a , b , $\#a'$, g , b , $\#c'$, e , f , $\#c'$, e . The bass clef staff contains notes: c , b , a , $\#c$, $\#c$.

ein Regen aus den Wolken ein Regen aus den

Handwritten musical notation for the seventh system, featuring a treble clef staff with notes and a bass clef staff with notes. The treble clef staff contains notes: $\#c'$, a , b , $\#a'$, g , b , $\#c'$, e , f , $\#c'$, e . The bass clef staff contains notes: c , b , a , $\#c$, $\#c$.

(2. + 3. gut)

Länge.

Handwritten musical score for piano and strings. The piano part is on the top two staves, and the string part is on the bottom two staves. The score is divided into three measures. The first measure contains chords and a melodic line. The second measure contains a melodic line and a chord. The third measure contains a complex chord structure with a "3 oben" annotation. The piano part includes dynamic markings like "f" and "p".

Wochen - wohl in der grüne Gras
 in der grüne Gras

Handwritten musical score for voice and piano. The voice part is on the top staff, and the piano accompaniment is on the bottom staff. The lyrics are written above the notes. The piano part includes dynamic markings like "f" and "p".

Photo (auf 3) (34) V.

Handwritten musical notation for the first system, including a treble clef, a key signature of one sharp (F#), and a 6/8 time signature. The notation features a melodic line with many beamed notes and a bass line with a circled 'F' and the instruction 'C.S.Z. Piccolo' with downward-pointing arrows.

Handwritten musical notation for the second system, featuring a treble clef and the lyrics 'wie Flöhen'. The notation includes a circled '12' and a circled '13'.

Handwritten musical notation for the third system, featuring a treble clef and a circled '13'.

Handwritten musical notation for the fourth system, including a treble clef, a circled '13', and the instruction '3. Streich' with a bracket over the notes.

Handwritten musical notation for the fifth system, featuring a treble clef and the lyrics 'wie zusammen'.

Handwritten musical notation for the sixth system, featuring a treble clef and the lyrics 'geht ein' and 'dunkle'.

Handwritten musical notation for the seventh system, featuring a treble clef, a circled '14', and the lyrics 'es muß ge- schieben sein es muß ge-'.

Handwritten musical score for piano and voice. The score consists of several staves. The top staff shows a melodic line with a key signature of one sharp (F#) and a common time signature. Below it are two staves for piano accompaniment, with some notes and slurs. The middle section shows a vocal line with lyrics in German. The bottom section shows a piano accompaniment for the vocal line. The handwriting is in black ink on aged paper.

Wohle be - reit es soll und muß ge -

schieden sein dein Lieb dein Schicksal macht mir das

Handwritten musical notation for piano accompaniment, including notes, rests, and slurs.

Schieden sein dein Lieb dein Schicksal macht mir das

Hörst du schwer macht das

Hörst

so

(3+ diesen Takt aushalten!)

A handwritten musical score for piano, consisting of approximately 10 staves. The notation includes various musical symbols such as notes, rests, and slurs. A large bracket at the top spans across the first few staves, with an arrow pointing to a specific measure and the handwritten instruction "(3+ diesen Takt aushalten!)". The score is written in a fluid, sketchy style.

Lein

Schwer

leuto

VI (langsam - aber nicht schlapp)

2te: erst wie (b)oe

pp

pp

pp

pp

2te: erst wie
pp Fagott

ritardo
1x
mit
Kell
p
caldo
1/2

pp
2te
x
erst wie
pp

Polo (Fagott)

mit

erst das 2te

Polo (Fagott)

pp

Freund der Zeit kann nicht bald —

Ⓟ

1

Handwritten musical notation for the first system, consisting of two staves with various notes and rests.

Handwritten musical notation for the second system, including a treble clef, a key signature of one sharp (F#), and a melodic line with slurs.

Handwritten musical notation for the third system, continuing the melodic line with slurs and a treble clef.

Handwritten musical notation for the fourth system, consisting of two staves with notes and rests.

Handwritten musical notation for the fifth system, featuring a treble clef, a key signature of one sharp, and a melodic line with slurs.

Handwritten musical notation for the sixth system, including a treble clef, a key signature of one sharp, and a melodic line with slurs.

Handwritten musical notation for the seventh system, including a treble clef, a key signature of one sharp, and a melodic line with slurs.

erst - all' im Grünen

schicken sein

2

Handwritten musical notation for the first system, consisting of two staves. The top staff contains several notes with stems, and the bottom staff contains rests.

Handwritten musical notation for the second system, featuring a treble clef. The top staff contains notes with stems and accidentals (sharps), and the bottom staff contains rests.

Handwritten musical notation for the third system, featuring a treble clef. The top staff contains notes with stems and accidentals, and the bottom staff contains rests.

Handwritten musical notation for the fourth system, consisting of two staves with various notes and rests.

Handwritten musical notation for the fifth system, featuring a treble clef. The top staff contains notes with stems and accidentals, and the bottom staff contains rests.

Handwritten musical notation for the sixth system, consisting of two staves with various notes and rests.

Wald + und alle die münden

Handwritten musical notation for the seventh system, featuring a treble clef and lyrics. The top staff contains notes with stems and accidentals, and the bottom staff contains rests.

The first system of the handwritten musical score consists of six staves. The top two staves are for piano accompaniment, with the right hand playing a melody of quarter notes and the left hand providing harmonic support. The next two staves are for a vocal line, featuring a melodic line with various accidentals and a bass line. The bottom two staves are for piano accompaniment, with the right hand playing a melody of quarter notes and the left hand providing harmonic support. The system concludes with a double bar line and a fermata over the final notes.

The second system of the handwritten musical score consists of six staves. The top two staves are for piano accompaniment, with the right hand playing a melody of quarter notes and the left hand providing harmonic support. The next two staves are for a vocal line, featuring a melodic line with various accidentals and a bass line. The bottom two staves are for piano accompaniment, with the right hand playing a melody of quarter notes and the left hand providing harmonic support. The system concludes with a double bar line and a fermata over the final notes.

Blümen die haben
 fein *mf* Lieb dein Scheiden macht
 mich weh dass

lunga

Handwritten musical score for voice and piano. The score is written on ten staves, with the top two staves for the voice and the bottom two for the piano. The music is in G major and 4/4 time. The lyrics are "miden Tod" and "Herse".

The score is divided into two systems. The first system contains the first two staves, and the second system contains the last two staves. The middle staves are mostly empty, suggesting they are for other instruments or are part of a larger score.

Lyrics:
miden Tod
Herse Herse

Annotations:
- "2++ ent" (two plus plus entrance) is written above the first and last staves.
- "pp 333" (pianissimo triplets) is written below the first and second staves.
- "lunga" (longa) is written at the top right.
- "miden Tod" and "Herse Herse" are written below the first and second staves respectively.
- There are various musical notations including notes, rests, and dynamic markings.

Allegro agitato

sempre leg.

VII

Violins I: *pp*, *acc.*, *vols.*

Violins II: *pp*, *wie Flöten solo*

Violas: *pp*, *acc.*

Cellos: *pp*, *acc.*

Double Basses: *pp*, *acc.*

Voice: *pp*, *acc.*

Lyrics: alle geht ein dunkle Walk here

Performance instruction: *Sempre (Steigerung) →*

Handwritten musical notation for the first system. The treble clef staff contains a melodic line with a circled '1' above it. The bass clef staff contains a rhythmic accompaniment with a circled 'p' below it.

Handwritten musical notation for the second system. The treble clef staff contains a melodic line with a circled 'p' below it. The bass clef staff contains a rhythmic accompaniment.

Handwritten musical notation for the third system. The treble clef staff contains a melodic line with a circled 'p' below it. The bass clef staff contains a rhythmic accompaniment.

Handwritten musical notation for the fourth system. The treble clef staff contains a melodic line with a circled 'p' below it. The bass clef staff contains a rhythmic accompaniment.

Handwritten musical notation for the fifth system. The treble clef staff contains a melodic line with a circled 'p' below it. The bass clef staff contains a rhythmic accompaniment.

Handwritten musical notation for the sixth system. The treble clef staff contains a melodic line with a circled 'p' below it. The bass clef staff contains a rhythmic accompaniment.

Handwritten musical notation for the seventh system. The treble clef staff contains a melodic line with the word "sein" written above it. The bass clef staff contains a rhythmic accompaniment with the words "Es folgt ein" written above it. A circled 'p' is below the treble staff.

Handwritten musical notation for the first system. The top staff is in treble clef and contains a melodic line with a long slur over the first two measures and another slur over the last two measures. The bottom staff is in bass clef and contains five downward-pointing arrows, indicating a descending bass line.

Handwritten musical notation for the second system. The top staff is in treble clef and contains a melodic line with notes and slurs. The bottom staff is in bass clef and contains notes with dynamic markings: $\#p$, $\#p$, $\#p$, pp , pp , pp , and pp .

Handwritten musical notation for the third system. The top staff is in treble clef and contains a melodic line with notes and slurs. The bottom staff is in bass clef and contains notes with dynamic markings: $\#p$, $\#p$, $\#p$, pp , pp , pp , and pp .

Handwritten musical notation for the fourth system. The top staff is in treble clef and contains a melodic line with notes and slurs. The bottom staff is in bass clef and contains notes with slurs.

Handwritten musical notation for the fifth system. The top staff is in treble clef and contains a melodic line with notes and slurs. The bottom staff is in bass clef and contains notes with dynamic markings: pp , pp , pp , and pp .

2

3

Handwritten musical score for a four-part setting. The top staff is a vocal line with a melodic line and a 'p' dynamic marking. Below it are three staves for a string quartet (violin I, violin II, and viola/cello), each with a 'p' dynamic marking. The bottom staff is a vocal line with lyrics. The music is divided into four measures by vertical bar lines.

dunkle oo oo wolk herein oo oo oo oo
 wolk herein ————— her-rein

4

Handwritten musical notation for the first system, featuring a treble clef and a grand staff with various notes and rests.

ff oben
wie Fleck

Handwritten musical notation for the second system, including dynamic markings and slurs.

Handwritten musical notation for the third system, showing a melodic line with slurs.

Handwritten musical notation for the fourth system, featuring a melodic line with slurs and accidentals.

Handwritten musical notation for the fifth system, showing a melodic line with slurs.

es will und mich
galt ein dank

Handwritten musical notation for the sixth system, including lyrics and musical notes.

le ——— schieden sein
 le Welt her ——— sein

5

Handwritten musical notation for the first system, featuring a treble clef, a key signature of one sharp (F#), and a series of sixteenth-note chords and melodic lines.

Handwritten musical notation for the second system, consisting of two staves with diagonal slash marks indicating rests or specific performance instructions.

Handwritten musical notation for the third system, showing a treble clef, a key signature of one sharp, and a melodic line with a slur over five notes.

Handwritten musical notation for the fourth system, showing a treble clef, a key signature of one sharp, and a melodic line with a slur over five notes.

Handwritten musical notation for the fifth system, showing a treble clef, a key signature of one sharp, and a melodic line with a slur over five notes.

Handwritten musical notation for the sixth system, including lyrics "soll und und ge" and "soll und und ge" written below the notes.

6

Handwritten musical score for the first system. It features a treble clef staff with a melodic line of eighth notes and a bass clef staff with a bass line. A circled '6' is at the top. A key signature of one sharp (F#) is indicated. A circled '6' is also present in the bass staff.

Handwritten musical score for the second system. It continues the musical notation from the first system. A circled '6' is present in the bass staff. A circled '6' is also present in the bass staff.

Erster
wie Fagotte

Handwritten musical score for the third system. It features a treble clef staff with a melodic line and a bass clef staff with a bass line. The lyrics 'scheiden sein!' are written above the treble staff, and 'scheiden sein' is written below the bass staff. A circled '6' is present in the bass staff.

scheiden sein!

scheiden sein

Handwritten musical score for a string quartet. The score is organized into systems, each containing staves for Violin I, Violin II, Viola, and Cello/Double Bass. The notation includes notes, rests, slurs, and dynamic markings such as *p* and *f*. The score is divided into two main sections by a vertical dashed line. The first section contains several measures of music, while the second section begins with a measure marked *Belit* and continues with further musical notation. The handwriting is clear and legible.

Handwritten musical score for a string quartet. The score is written on four staves, likely representing Violin I, Violin II, Viola, and Cello/Double Bass. The notation includes various notes, rests, and dynamic markings. The first staff (Violin I) has a treble clef and a key signature of one flat. The second staff (Violin II) has a treble clef and a key signature of one flat. The third staff (Viola) has an alto clef and a key signature of one flat. The fourth staff (Cello/Double Bass) has a bass clef and a key signature of one flat. The score is divided into two measures by a vertical dashed line. The first measure contains several notes and rests, while the second measure contains more notes and rests. The notation is somewhat sketchy and appears to be a working draft.

drunkle Walk he — sein

Handwritten musical score for a vocal line. The score is written on a single staff with a treble clef. The lyrics are "drunkle", "Walk he — sein", and "Taine". The notation includes notes, rests, and dynamic markings. The score is divided into two measures by a vertical dashed line. The first measure contains the lyrics "drunkle" and "Walk he", while the second measure contains the lyrics "sein" and "Taine". The notation is somewhat sketchy and appears to be a working draft.

Taine

Handwritten musical notation for the first system. The top staff has a treble clef and contains two measures of music with a sharp sign (#) above a note and a slur. The grand staff below it has two staves, both with a sharp sign (#) above a note and a slur.

Handwritten musical notation for the second system. The top staff has a treble clef and contains two measures of music with a sharp sign (#) above a note and a slur. The grand staff below it has two staves, both with a sharp sign (#) above a note and a slur.

Handwritten musical notation for the third system. The top staff has a treble clef and contains two measures of music with a flat sign (b) above a note and a slur. The grand staff below it has two staves, both with a sharp sign (#) above a note and a slur.

Handwritten musical notation for the fourth system. The top staff has a treble clef and contains two measures of music with a flat sign (b) above a note and a slur. The grand staff below it has two staves, both with a sharp sign (#) above a note and a slur.

Handwritten musical notation for the fifth system. The top staff has a treble clef and contains two measures of music with a flat sign (b) above a note and a slur. The grand staff below it has two staves, both with a sharp sign (#) above a note and a slur.

Handwritten musical notation for the sixth system. The top staff has a treble clef and contains two measures of music with a flat sign (b) above a note and a slur. The grand staff below it has two staves, both with a sharp sign (#) above a note and a slur.

Handwritten musical score for a string quartet. The score is written on ten staves, with the first four staves grouped by a brace on the left. The notation includes various musical symbols such as notes, rests, and dynamic markings.

At the top of the page, there is a circled number **7**. Above the first staff, there are vertical lines and a circled **7**. Above the second staff, there are vertical lines and a circled **7**. Above the third staff, there are vertical lines and a circled **7**. Above the fourth staff, there are vertical lines and a circled **7**. Above the fifth staff, there are vertical lines and a circled **7**. Above the sixth staff, there are vertical lines and a circled **7**. Above the seventh staff, there are vertical lines and a circled **7**. Above the eighth staff, there are vertical lines and a circled **7**. Above the ninth staff, there are vertical lines and a circled **7**. Above the tenth staff, there are vertical lines and a circled **7**.

The score is divided into measures by vertical bar lines. The first measure contains a circled **7**. The second measure contains a circled **7**. The third measure contains a circled **7**. The fourth measure contains a circled **7**. The fifth measure contains a circled **7**. The sixth measure contains a circled **7**. The seventh measure contains a circled **7**. The eighth measure contains a circled **7**. The ninth measure contains a circled **7**. The tenth measure contains a circled **7**.

At the bottom of the page, there is a line of text: **mit** **pe -** **solisten** **sein**. Below this text, there are musical notes and rests on the staves.

immer breiter werden

8 # 10

Handwritten musical notation on a grand staff (treble and bass clefs). The first measure contains a treble clef, a bass clef, and a key signature of one sharp (F#). Above the staff, there are vertical lines and the number '1110'. A circled '8' and '# 10' are written above the first measure. The notation includes various notes and rests.

Handwritten musical notation on a grand staff. The first measure contains a treble clef, a bass clef, and a key signature of one sharp (F#). Above the staff, there are vertical lines and the number '1010'. A circled '8' and '# 10' are written above the first measure. The notation includes various notes and rests.

Handwritten musical notation on a grand staff. The first measure contains a treble clef, a bass clef, and a key signature of one sharp (F#). Above the staff, there are vertical lines and the number '1010'. A circled '8' and '# 10' are written above the first measure. The notation includes various notes and rests.

Handwritten musical notation on a grand staff. The first measure contains a treble clef, a bass clef, and a key signature of one sharp (F#). Above the staff, there are vertical lines and the number '1010'. A circled '8' and '# 10' are written above the first measure. The notation includes various notes and rests.

Handwritten musical notation on a grand staff. The first measure contains a treble clef, a bass clef, and a key signature of one sharp (F#). Above the staff, there are vertical lines and the number '1010'. A circled '8' and '# 10' are written above the first measure. The notation includes various notes and rests.

Handwritten musical notation on a grand staff. The first measure contains a treble clef, a bass clef, and a key signature of one sharp (F#). Above the staff, there are vertical lines and the number '1010'. A circled '8' and '# 10' are written above the first measure. The notation includes various notes and rests.

Handwritten musical notation on a grand staff. The first measure contains a treble clef, a bass clef, and a key signature of one sharp (F#). Above the staff, there are vertical lines and the number '1010'. A circled '8' and '# 10' are written above the first measure. The notation includes various notes and rests.

Handwritten musical notation on a grand staff. The first measure contains a treble clef, a bass clef, and a key signature of one sharp (F#). Above the staff, there are vertical lines and the number '1010'. A circled '8' and '# 10' are written above the first measure. The notation includes various notes and rests.

Handwritten musical notation on a grand staff. The first measure contains a treble clef, a bass clef, and a key signature of one sharp (F#). Above the staff, there are vertical lines and the number '1010'. A circled '8' and '# 10' are written above the first measure. The notation includes various notes and rests.

spirit.

9

Handwritten musical score for strings and woodwinds. The score is divided into two systems. The first system contains staves for Violin I (5), Violin II (#), Viola (5), Cello (#), Clarinet (C), and Bassoon (#). The second system contains staves for Violin I (#), Violin II (#), Viola (#), Clarinet (C), and Bassoon (#). The woodwind parts feature rhythmic notation with slurs and accents.

Grds. rit.

lento (breit)

lunga

Dein Heiligtum macht mir das Herz so schwer!