

Studie in D  
 für  
 Flöte (Altflöte) Piano - Bass (Fazz)  
 Schlagzeug (1+33) 3 Posaunen (Fazz)  
 1974  
 Adolf Scherbaum

Sammlungsnummer:

Besetzung: 1 Flöte (Altflöte) Piano | Bass | Schlagzeug (ohne Posaunen)  
 1. Flöte: 2 Flöten (Altflöte) " " "  
 2. Flöte: 1 Flöte (Altflöte) " " " 3 Posaunen  
 3. Flöte: 2 Flöten (Altflöte) " " " "

Wichtig bei allen Werken mit betontem 4/3 Tempo sind die 12 Töne  
 dokumentiert. Besonders die 12 Töne sind ein Tempo abnehmend aufgebaut  
 sind, die 12 Töne abnehmend aufgebaut sind. 12 Töne abnehmend aufgebaut



Handwritten musical score for the first system. It features a treble clef, a key signature of one sharp (F#), and a 3/4 time signature. The score consists of four staves. The top staff contains a melodic line with slurs and accents. The second staff contains a chordal accompaniment with slurs. The third staff is a bass line with slurs. The fourth staff contains rhythmic markings. The system concludes with a double bar line and a fermata. A page number '22' is written in the top right corner.

Handwritten musical score for the second system. It features a treble clef, a key signature of one flat (Bb), and a 3/4 time signature. The score consists of four staves. The top staff contains a melodic line with slurs and accents. The second staff contains a chordal accompaniment with slurs. The third staff is a bass line with slurs. The fourth staff contains rhythmic markings. The system concludes with a double bar line and a fermata. A page number '23' is written in the bottom right corner.

Handwritten musical score for the first system. It begins with a treble clef and a circled 'f' dynamic marking. The notation includes several measures with notes, rests, and slurs, indicating a melodic line. There are also some vertical lines and symbols that might represent chords or specific performance instructions.

Handwritten musical score for the second system. It starts with a treble clef and a circled 'f' dynamic marking. The notation is more complex, featuring many notes with slurs and some vertical lines. There are also some symbols that look like 'b' and 'o' which might be part of the notation or performance instructions. The system ends with a double bar line.

Handwritten musical notation for a guitar-like instrument, showing a fretboard with notes and a treble clef.

Handwritten notes and symbols, possibly indicating dynamics or performance instructions.

Large handwritten musical score with multiple staves. It includes a vocal line with lyrics "dieu" and "den", and various instrumental parts. The notation is dense and includes many accidentals and dynamic markings.

Handwritten musical notation, possibly a bass line or a specific instrumental part, with a treble clef.

Detailed handwritten musical score for a single instrument, featuring a treble clef, a key signature of one sharp, and a complex melodic line with a triplet. The notation includes many accidentals and dynamic markings.



(2)

Handwritten musical notation for system 2. It features three staves: guitar, bass, and drums. The guitar staff shows a sequence of chords and melodic lines with various markings like accents and slurs. The bass staff shows a rhythmic pattern with notes and rests. The drum staff shows a simple drum pattern with notes and rests.

(3)

Handwritten musical notation for system 3. It features three staves: guitar, bass, and drums. The guitar staff shows a sequence of chords and melodic lines with various markings like accents and slurs. The bass staff shows a rhythmic pattern with notes and rests. The drum staff shows a simple drum pattern with notes and rests.

Handwritten musical score for the first system, consisting of three staves. The top staff is a treble clef with a key signature of one sharp (F#) and contains a melodic line with slurs and accents. The middle staff is a bass clef with a key signature of one sharp (F#) and contains a rhythmic line with vertical stems. The bottom staff is a bass clef with a key signature of one sharp (F#) and contains a melodic line with slurs and accents. A circled number '1' is written at the end of the system.

Handwritten musical score for the second system, consisting of three staves. The top staff is a treble clef with a key signature of one sharp (F#) and contains a melodic line with slurs and accents. The middle staff is a bass clef with a key signature of one sharp (F#) and contains a rhythmic line with vertical stems. The bottom staff is a bass clef with a key signature of one sharp (F#) and contains a melodic line with slurs and accents. A circled number '2' is written at the end of the system.



Pedal > din

Handwritten musical score for the first system. It consists of five staves. The top staff has a piano (p) dynamic and a slur. The second staff has a forte (f) dynamic and a slur. The third staff has a piano (p) dynamic and a slur. The fourth staff has a piano (p) dynamic and a slur. The fifth staff has a piano (p) dynamic and a slur. There are various musical notations including notes, rests, and slurs. The word "din" is written below the fourth staff.

(Solo)

Handwritten musical score for the second system. It consists of five staves. The top staff has a piano (p) dynamic and a slur. The second staff has a piano (p) dynamic and a slur. The third staff has a piano (p) dynamic and a slur. The fourth staff has a piano (p) dynamic and a slur. The fifth staff has a piano (p) dynamic and a slur. There are various musical notations including notes, rests, and slurs. The word "(Solo)" is written above the first staff.

Handwritten musical score for the first system, consisting of four staves. The notation includes treble and bass clefs, various notes, rests, and dynamic markings. A large bracket spans the first two staves of the first measure. A circled measure number '12' is written above the second measure. Below the staves, there are handwritten notes and symbols, including a circled '19'.

Handwritten musical score for the second system, also consisting of four staves. The notation includes treble and bass clefs, notes, rests, and dynamic markings. A large bracket spans the first two staves of the first measure. Below the staves, there are handwritten notes and symbols, including a circled '19'.

Handwritten musical score for the first system, featuring a treble clef and a key signature of one sharp (F#). The notation includes a melodic line with a "tolo" marking, a bass line with a "bb" marking, and a guitar-style staff with a "1 2 3" sequence. The system is divided into three measures by vertical bar lines.

Handwritten musical score for the second system, featuring a treble clef and a key signature of one sharp (F#). The notation includes a melodic line with a "1 2 3" sequence, a bass line with a "1 1 1" sequence, and a guitar-style staff with a "1 1 1" sequence. The system is divided into three measures by vertical bar lines.

Handwritten musical notation for the first system, including staves with notes, clefs, and dynamic markings.

Handwritten musical notation for the first system, including staves with notes, clefs, and dynamic markings.

Handwritten musical notation for the first system, including staves with notes, clefs, and dynamic markings.

Handwritten musical notation for the first system, including staves with notes, clefs, and dynamic markings.

Handwritten musical notation for the second system, including staves with notes, clefs, and dynamic markings.

Handwritten musical notation for the second system, including staves with notes, clefs, and dynamic markings.

Handwritten musical notation for the second system, including staves with notes, clefs, and dynamic markings.

Handwritten musical notation for the second system, including staves with notes, clefs, and dynamic markings.

1. > dññ ...

2. rit + dññ

# Langsam (Bluestempo)

Handwritten musical score for the first system. It features a treble clef, a key signature of one flat (B-flat), and a 4/4 time signature. The score includes a melody line with slurs and accents, a bass line with notes and rests, and a guitar accompaniment line with 'x' marks for fretted notes. A circled 'P' indicates a piano dynamic. The notation is dense with accidentals and slurs.

Handwritten musical score for the second system. It features a treble clef, a key signature of one flat (B-flat), and a 4/4 time signature. The score includes a melody line with slurs and accents, a bass line with notes and rests, and a guitar accompaniment line with 'x' marks for fretted notes. A circled 'f' indicates a forte dynamic. The notation is dense with accidentals and slurs.

Handwritten musical notation on a page with a vertical dashed line down the center. The notation includes notes with stems and beams, some with accents (^). Above the notes, there are some numbers and symbols like "3 2 7" and "#". Below the notes, there are some symbols like "din" and "p".

Handwritten musical notation consisting of a few notes with stems and beams, and some symbols like "#".

(poco rit. ....)

Handwritten musical notation on a page with a vertical dashed line down the center. The notation includes notes with stems and beams, some with accents (^). Above the notes, there are some numbers and symbols like "10" and "11". Below the notes, there are some symbols like "p" and "P".

Beethoven (Appassionato)

This image shows a handwritten musical score for Beethoven's 'Appassionato' (Op. 108). The score is written on four systems of staves, each system containing a piano (p) part and a violin (v) or cello (c) part. The piano parts are written in treble clef, and the violin/cello parts are written in bass clef. The key signature is three sharps (F#, C#, G#), and the time signature is 3/4. The score includes various musical notations such as notes, rests, slurs, and dynamic markings. There are several annotations and corrections in the score, including circled numbers (1, 2, 3, 4) and handwritten notes like 'offen' and 'cresc.'. The handwriting is in black ink on aged paper.



ritardando Tempo zurück nehmen

(poco rit)

(frei)

(2te + 3te Satz)

(12)

17. Satz

Handwritten musical score for the first system. It includes a piano part with chords and a violin part with notes. The tempo marking is "(poco rit)". There are dynamic markings like "poco rit" and "din".

Handwritten musical score for the second system. It includes a piano part with chords and a violin part with notes. The tempo marking is "(frei)". There are dynamic markings like "f" and "p".

Handwritten musical score for the third system. It includes a piano part with chords and a violin part with notes. The tempo marking is "rit".

Handwritten musical score for the fourth system. It includes a piano part with chords and a violin part with notes. The tempo marking is "leggi". There are dynamic markings like "f".

(12)

Handwritten musical score for the fifth system. It includes a piano part with chords and a violin part with notes. The dynamic marking is "pp".

**Bab Solo**

(frei) (Pos. 1. Solo)

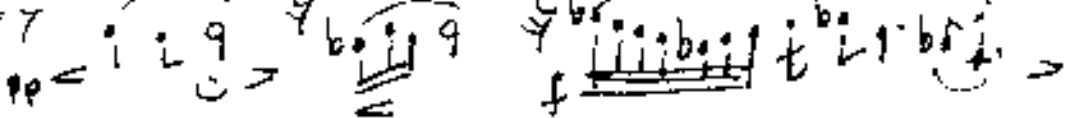
gitar

Fr. Pl. (richtig notiert | alles frei gestalten!

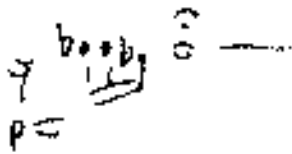
(mit Mikroplasma)

subito

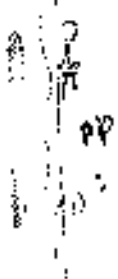
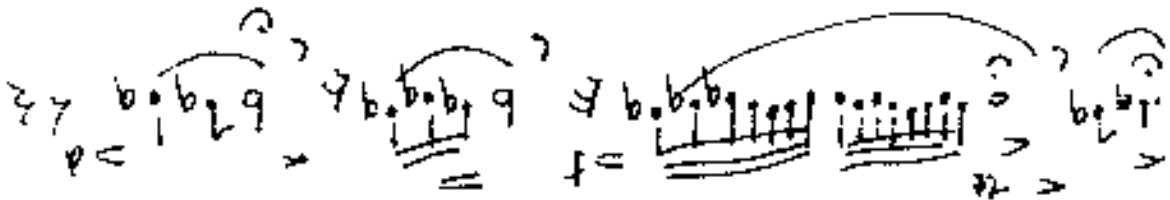
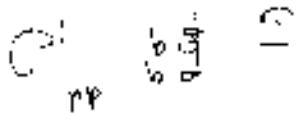
(mit - drei



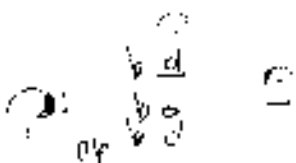
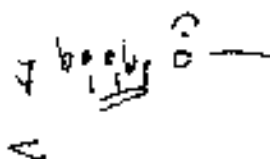
Colpaso



CON SURO.



Colpaso



Flügelhorn! sehr fein!

(2. H. Note) spielt auch nächste Note von Fl. Flöte

Handwritten musical notation for the first staff, featuring a treble clef, a key signature of one sharp (F#), and a 2/4 time signature. The music includes various notes, rests, and dynamic markings such as *p* and *f*.

Handwritten musical notation for the second staff, continuing the piece with similar notation and dynamic markings.

Handwritten musical notation for the third staff, including a section labeled "Solo" and dynamic markings.

Handwritten musical notation for the fourth staff, with dynamic markings like *pp* and *f*.

Handwritten musical notation for the fifth staff, featuring a treble clef and dynamic markings.

Handwritten musical notation for the sixth staff, ending with a double bar line and a circled number 18.

frei (except) sehr rasch  
Fl. Flöte Solo

Handwritten musical notation for the seventh staff, starting with a treble clef and a key signature of one sharp, and including dynamic markings like *pp* and *f*.

Handwritten musical notation for the eighth staff, featuring a treble clef and dynamic markings.

Handwritten musical notation for the ninth staff, including a treble clef and dynamic markings.

Handwritten musical notation for the tenth staff, ending with a treble clef, dynamic markings, and a circled number 18.

Größ Solo (ganz frei) ad. lib.

ff subito →

p =  
nasche (1)      ff = accel.

end.

ff

rit - dim      ff >

D.C. 4 Mod. assai  
al CODA

♩ Coda

(dim) 4+ (dim bis pp)

(E)

Handwritten musical score for a piano piece. The score is written on a grid of five staves. The top staff contains a melodic line with notes and rests, marked with a circled 'E' and a '(4?)'. The second staff contains a series of notes with slurs and accents. The third staff contains notes with slurs and accents, and a circled '10'. The fourth staff contains notes with slurs and accents. The fifth staff contains notes with slurs and accents. The word 'Solo' is written on the left side of the score. The score is marked with various dynamics, including '(dim)', '4+', '(dim bis pp)', and '10'. There are also some handwritten annotations and markings throughout the score.

Handwritten musical score for a piano piece. The score is written on a grid of five staves. The top staff contains a melodic line with notes and rests, marked with a circled 'E' and a '(4?)'. The second staff contains a series of notes with slurs and accents. The third staff contains notes with slurs and accents, and a circled '10'. The fourth staff contains notes with slurs and accents. The fifth staff contains notes with slurs and accents. The word 'Solo' is written on the left side of the score. The score is marked with various dynamics, including '(dim)', '4+', '(dim bis pp)', and '10'. There are also some handwritten annotations and markings throughout the score.

Handwritten musical notation in a system with three staves. The top staff contains a melodic line with notes and rests. The middle and bottom staves contain chordal accompaniment with notes and stems. There are various musical symbols such as slurs, accents, and dynamic markings.

A horizontal line of handwritten musical notation, possibly a bass line or a specific rhythmic pattern, with notes and stems.

(\*) let's go (pp)

(C)(D)(E)

A large section of handwritten musical notation. It features a central staff with notes and stems, flanked by other staves with musical symbols. There are several slurs and dynamic markings throughout. At the bottom right, there is a circled musical phrase and the dynamic marking 'pp'.

Handwritten musical notation for the first system, including a treble clef, a key signature of one sharp (F#), and a common time signature (C). The notation consists of several staves with notes, rests, and dynamic markings such as *ppp* and *pp*. There are also some handwritten annotations and symbols.

Handwritten musical notation for the second system, featuring a treble clef, a key signature of one sharp (F#), and a common time signature (C). The notation is similar to the first system, with notes, rests, and dynamic markings.

Handwritten musical notation for the third system, featuring a treble clef, a key signature of one sharp (F#), and a common time signature (C). The notation continues the piece with notes and rests.

Handwritten musical notation for the fourth system, including a treble clef, a key signature of one sharp (F#), and a common time signature (C). The notation shows notes, rests, and dynamic markings.

Fin

*Edvard Grieg*

Handwritten notes and signatures at the bottom of the page, including the name "Edvard Grieg" and other illegible markings.