

Notenheft

Das Lied vom Wasserrad
(nach Bertolt Brecht)

für gemischten Chor und Basssolo
mit großem Orchester

1944

Adolf Scherbaum

(Klavierauszug)

lento (sehr langsam) cresc.

Handwritten musical notation for the first system. The treble clef staff begins with a circled '2' and a piano 'p' dynamic. The melody consists of quarter notes with slurs. The bass line features a sharp sign and a circled '0'. A crescendo hairpin spans the system.

Handwritten musical notation for the second system. The treble clef staff continues the melody with slurs. The bass line includes a sharp sign and a circled '0'. A crescendo hairpin is present.

cresc.

Handwritten musical notation for the third system. The treble clef staff shows a piano 'p' dynamic followed by a fortissimo 'ff' dynamic. The bass line includes a sharp sign and a circled '0'. A crescendo hairpin spans the system.

oder breit

(accel.)

Handwritten musical notation for the fourth system. The treble clef staff begins with a circled 'ff' and a fortissimo 'ff' dynamic. The melody includes accents (^). The bass line includes a sharp sign and a circled '0'. An acceleration '(accel.)' marking is present.

2. (e). (poco rit)

Piano accompaniment for the first system, featuring treble and bass staves with chords and melodic lines. The music is in a minor key with a key signature of two flats (B-flat and E-flat). The tempo is marked 'poco rit'.

sehr breit (♩)

Vocal and orchestral staves for the second system. The vocal parts are labeled Soprano, Alto, Tenor, and Bass. The lyrics are: "von den Großen dieser Erde melden". The orchestral part includes piano accompaniment with triplets and slurs. The tempo is marked 'sehr breit (♩)'.

Vocal and orchestral staves for the third system. The vocal parts continue with the lyrics: "muss die Helden = Lieder". The piano accompaniment features triplets and slurs. The tempo is marked 'sehr breit (♩)'.

Handwritten musical score for piano, featuring two systems of staves. The first system shows a piano introduction with a treble and bass clef, containing two systems of chords and melodic lines with slurs and accents. The second system continues the piano part with similar notation.

Steigend: auf so wie ge = stinue

Handwritten musical score for voice and piano. The top system shows a vocal line with lyrics "auf so wie ge = stinue" and a piano accompaniment. The bottom system shows a piano accompaniment with a treble and bass clef, featuring a melodic line with slurs and accents.

Gehu sie wie Se-stimme wieder

Handwritten musical score for the first system. It features a vocal line with lyrics "Gehu sie wie Se-stimme" and "wieder", a piano accompaniment, and a bass line. The piano part has a melodic line in the right hand and chords in the left hand. The bass line shows a progression from a low chord to a higher one with a sharp sign.

das klingt tröstlich

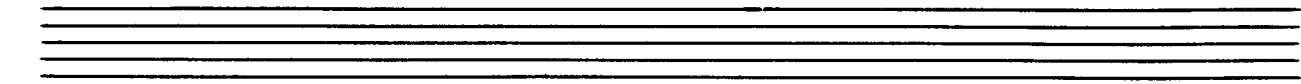
Handwritten musical score for the second system. It features a vocal line with lyrics "das klingt tröstlich", a piano accompaniment, and a bass line. The piano part has a melodic line in the right hand and chords in the left hand. The bass line shows a progression from a low chord to a higher one with a sharp sign.

Handwritten musical score for the first system. It consists of three staves: a vocal line (treble clef), a piano accompaniment line (treble clef), and a bass line (bass clef). The vocal line has two phrases of lyrics: "und man muß es wissen" and "und man muß es wissen". The piano accompaniment features a sequence of chords in the right hand and a bass line in the left hand. The bass line starts with a double bar line and a flat sign, followed by a double bar line and a flat sign with a double underline.

Handwritten musical score for the second system. It consists of three staves: a vocal line (treble clef), a piano accompaniment line (treble clef), and a bass line (bass clef). The vocal line has two phrases of lyrics: "wissen" and "für uns die wir sie nähern müssen". The piano accompaniment features a sequence of chords in the right hand and a bass line in the left hand. The bass line starts with a double bar line and a flat sign, followed by a double bar line and a flat sign with a double underline.

ist das leider immer ziemlich *plötzlich = messen*
(погода)

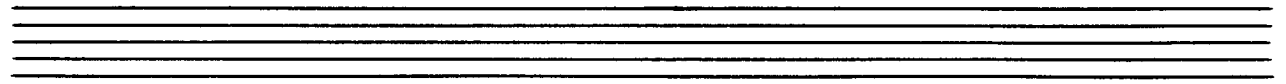
oder weit



gut dein

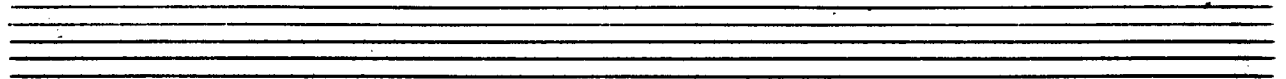
Aufstieg oder Fall verträgt die Spesen

Aufstieg oder Fall verträgt die Spesen

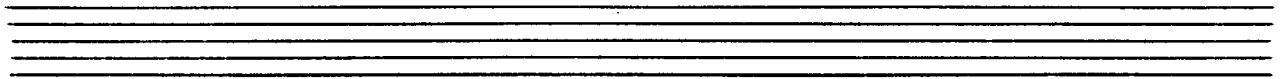


Leute (♩) sehr ruhig

Handwritten musical score for the first system. It consists of three staves: a vocal line in treble clef, a piano accompaniment in treble clef, and a bass line in bass clef. The key signature has one sharp (F#). The tempo/mood is marked 'sehr ruhig'. The lyrics are: 'Bass Solo freilich dreht das Rad nicht immer weiter'. The piano part includes a 'pp' dynamic marking and various articulation marks like accents and slurs. The bass line has some rhythmic notation and accidentals.



Handwritten musical score for the second system. It continues the three-staff format from the first system. The lyrics are: 'das was oben ist nicht oben bleibt'. The piano accompaniment continues with similar articulation and dynamics. The bass line also continues with its rhythmic pattern.



proo mit

aber für das Wasser
unten heißt das leider

frei gut dein

nur daß es das
Rad halt ewig treibt

(♩) subito ff (nicht schleppend)

Ach wir hatten viele Herren hatten

CHOR

Handwritten musical score for the first system. It features a vocal line and a piano accompaniment. The piano part includes a grand staff with treble and bass clefs, showing chords and triplets. The vocal line is on a single staff with notes and lyrics. Dynamics include 'subito ff' and 'ff'.

Adler sind Hy = änen

Handwritten musical score for the second system. It features a vocal line and a piano accompaniment. The piano part includes a grand staff with treble and bass clefs, showing chords and triplets. The vocal line is on a single staff with notes and lyrics. Dynamics include 'ff'.

Handwritten musical score for piano and voice. The piano part features two staves with complex rhythmic patterns, including triplets and slurs. The voice part is indicated by a single staff with a long dash, suggesting a rest or a specific vocal line.

(drückende Akkord) →

hatten Adler hatten Schweine

hatten Adler hatten Schweine

Handwritten musical score for piano and voice. The piano part features two staves with complex rhythmic patterns, including triplets and slurs. The voice part is indicated by a single staff with a long dash, suggesting a rest or a specific vocal line.

doch wir nähsten den und fernem -

ob sie besser waren

ob sie besser waren

ob sie besser waren

(vorwärts →)

Handwritten musical score for the first system. It consists of three staves. The top staff is a vocal line with lyrics "oder schlimmer" written above it. The middle staff is a vocal line with lyrics "oder schlimmer" written above it. The bottom staff is a piano accompaniment with a bass line and a treble line. The piano part includes a series of chords and a melodic line in the treble clef. There are some handwritten annotations like "7" and "!" in the piano part.

Handwritten musical score for the second system. It consists of three staves. The top staff is a vocal line with lyrics "schlimmer" written above it. The middle staff is a vocal line with lyrics "hoch den Stiefel gleich dem Stiefel immer" written above it. The bottom staff is a piano accompaniment with a bass line and a treble line. The piano part includes a series of chords and a melodic line in the treble clef. There are some handwritten annotations like "7" and "!" in the piano part.

(zuerück in tempo) *(rit)*

und uns trat er und uns trat er ihr verstellte vor ich meine

(sehr frei (breit) rubato) *(accel)* *rit* *(breit)*

das wir keine andern Herren brauchen sondern keine!

10 *## (fast schreiend)*

Bass Solo (Leute (A) sehr ruhig)

freilich dreht das Rad sich immer weiter

Daß, was oben ist, nicht offen bleibt.

Adagio

Aber für das Wasser unten heißt das leider

(frei) *mit* *das es das* *Rad halt ewig* *(gibt + dinst)*

Tempo $\frac{2}{8}$ (oder ruhig) =

treibt

großes mit - - - - -

Leito (s) sehr langsam (große Steigerung) cresc + accel.

ORCH

ppp = #

#

#

#

Handwritten musical score for piano. The top staff shows a treble clef with a key signature of one flat (B-flat) and a 4/4 time signature. The music consists of several measures of chords and melodic lines. A circled 'mf' (mezzo-forte) dynamic marking is present in the first measure. The bottom staff shows the bass clef with corresponding chords. A circled 'mf' dynamic marking is also present in the bottom staff.

Allegro (sehr bewegt)

Handwritten musical score for voice and piano. The top staff is for the voice, with lyrics: "und sie schlagen sich die". The bottom staff is for the piano accompaniment. The key signature is one sharp (F#) and the time signature is 4/4. A circled 'mf' dynamic marking is present in the piano part. The lyrics "und sie schlagen" are written below the piano part.

Handwritten musical score for voice and piano. The top staff is for the voice, with lyrics: "Köpfe blühend sind die". The bottom staff is for the piano accompaniment. The key signature is one sharp (F#) and the time signature is 4/4. The lyrics "und sie schlagen" and "schlagen" are written below the piano part.

Beute und sie

sich die Köpfe blutig

Handwritten musical score for the first system. It consists of four staves. The top two staves are vocal lines with lyrics: "Beute und sie" and "sich die Köpfe blutig". The bottom two staves are piano accompaniment. The music is in a minor key and 4/4 time. There are various musical notations including notes, rests, and dynamic markings.

schlagen sich die Köpfe blutig

und sie schlagen

Handwritten musical score for the second system. It consists of four staves. The top two staves are vocal lines with lyrics: "schlagen sich die Köpfe blutig" and "und sie schlagen". The bottom two staves are piano accompaniment. The music continues from the first system with similar notation and dynamics.

Handwritten musical score for the first system. It consists of four staves. The top two staves are for the vocal line, with lyrics "manfred nun die Beute" written above. The bottom two staves are for the piano accompaniment. The music is in a minor key, indicated by a flat sign (b) on the first line of the vocal staff. The piano part includes a treble clef staff with notes and a bass clef staff with chords. There are some handwritten annotations like accents (^) and a sharp sign (#) in the piano part.

Handwritten musical score for the second system, continuing from the first. It also consists of four staves. The top two staves are for the vocal line, which is mostly blank with a few notes and rests. The bottom two staves are for the piano accompaniment, featuring more complex piano textures with chords and melodic lines. The notation includes various clefs, notes, and rests.

Handwritten musical score for the first system. It consists of a vocal line and a piano accompaniment. The vocal line has lyrics: "nennen andre gierige Tröpfe". The piano accompaniment includes a right-hand part with chords and a left-hand part with a bass line. Dynamics include *mf* and *f*. There are various musical notations such as slurs, accents, and fermatas.

Handwritten musical score for the second system. It consists of a vocal line and a piano accompaniment. The vocal line has lyrics: "und sich selber gute Leute". The piano accompaniment includes a right-hand part with chords and a left-hand part with a bass line. Dynamics include *mf*. There are various musical notations such as slurs, accents, and fermatas.

und sich selber gute

Handwritten musical score for the first system. It features a vocal line with lyrics "und sich selber gute", a piano accompaniment with chords and a bass line. The piano part includes a circled "F#" and a circled "7".

Leute

Handwritten musical score for the second system. It features a vocal line with lyrics "Leute", a piano accompaniment with chords and a bass line. The piano part includes a circled "F#" and a circled "7".

Handwritten musical score for the first system. The upper staff (treble clef) contains a melody with notes G4, A4, Bb4, and C5, each with an accent (^) above it. The lower staff (bass clef) contains a chordal accompaniment with notes G2, Bb2, D3, and F3. A circled 'fff' dynamic marking is present at the beginning of the first measure.

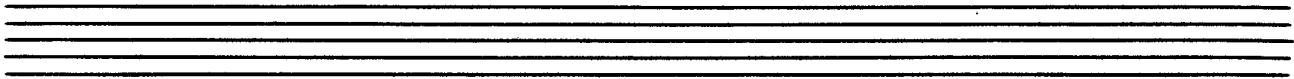
Handwritten musical score for the second system. The upper staff (treble clef) contains a melody with notes G4, Ab4, Bb4, and C5, each with an accent (^) above it. The lower staff (bass clef) contains a chordal accompaniment with notes G2, Bb2, D3, and F3. A circled 'fff' dynamic marking is present at the beginning of the first measure.

Leute
CHOR (leise / flüsternd - / große Steigerung bis schreiend)

Unaufhörlich sehen wir sie
 einander grollen - und bekämpfen -
 Einzig und alleinig -

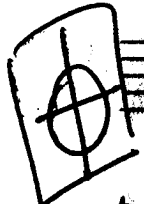
ORCHESTER (mit CHOR / große Steigerung bis ppp)

Wenn wir sie nicht mehr beschreiben wollen -
 Sind sie sich auf einmal völlig einzig



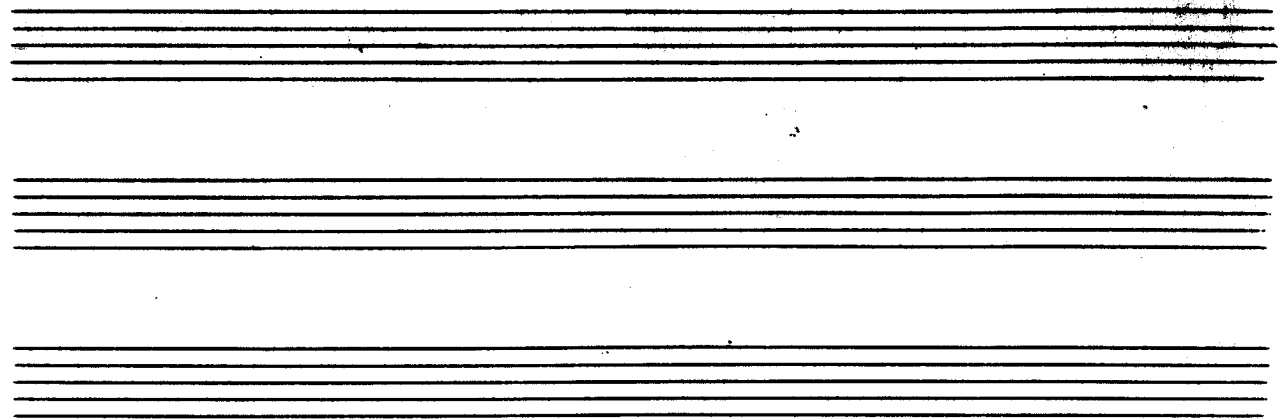
dieses Feset
ständig wiederholen -
(durcheinander - u.s.w.) mit immer größerer Bewegung:
bis (schreiend fff)

folgt



sehr breit (pesante) (♩)

ORCH.



Handwritten musical score for the first system, featuring a vocal line and a piano accompaniment. The piano part includes complex chords and arpeggiated figures.

großes mit - dem.

Handwritten musical score for the second system, continuing the vocal and piano parts with various musical notations.

Handwritten musical score for the third system, showing dynamic markings like 'p' and 'pp' and specific chord structures.

Handwritten musical score for the fourth system, concluding with a boxed 'G.P.' marking.

Lento (♩) sehr ruhig

Dann drehn dreht Rad nicht weiter
das sich mehr \uparrow \sharp

Handwritten musical score for the first system. It features a vocal line on a single staff and piano accompaniment on two staves. The piano part includes a treble clef with a key signature of one sharp (F#) and a bass clef with a key signature of one flat (Bb). The tempo is marked 'Lento (♩) sehr ruhig'. The lyrics are 'Dann drehn dreht Rad nicht weiter' and 'das sich mehr' with a sharp sign above. The piano part has a 'pp' dynamic marking and includes circled 'X' symbols. Pedal markings are present at the end of the system.

und das heitere Spiel
was zurück bleibt

Handwritten musical score for the second system. It features a vocal line on a single staff and piano accompaniment on two staves. The piano part includes a treble clef with a key signature of one flat (Bb) and a bass clef with a key signature of one flat (Bb). The lyrics are 'und das heitere Spiel' and 'was zurück bleibt'. The piano part includes a 'p' dynamic marking and includes circled 'X' symbols. Pedal markings are present at the end of the system.

(poco più =)

dann das Wasser endlich mit fe= frischer Stärke

Handwritten musical score for the third system. It features a vocal line on a single staff and piano accompaniment on two staves. The piano part includes a treble clef with a key signature of one flat (Bb) and a bass clef with a key signature of one flat (Bb). The lyrics are 'dann das Wasser endlich mit fe= frischer Stärke'. The piano part includes a 'p' dynamic marking and includes circled 'X' symbols. Pedal markings are present at the end of the system.

Ped.

Handwritten musical score on ten staves. The top staff contains the word "Lunge" and a circled "n". The second staff is a grand staff with piano notation, including a treble clef, a key signature of one sharp (F#), and a time signature of 3/4. The notation includes notes, rests, and dynamic markings such as "ppp". A double bar line is present. The bottom of the second staff is marked with "Fin". The third staff has a circled "n" and a signature "Scherbaum" with the year "1974" written below it. The remaining staves are mostly empty, with some faint markings and a large scribble on the fourth staff.