

Notenheft



Das Lied vom Wasserrad
(nach Bertolt Brecht)

für gemischten Chor und Bass -
mit großem Orchester

1974

Adolf Scherbaum

(Klavierauszug)

lento (sehr langsam) cresc.

Handwritten musical notation for the first system. The treble clef part begins with a circled '2' and a 'p' dynamic marking. The bass clef part features a circled '2' and a 'pp' dynamic marking. The notation includes eighth notes, quarter notes, and chords with accidentals (sharps and naturals). A crescendo hairpin is present. The system concludes with a double bar line.

Handwritten musical notation for the second system. The treble clef part includes notes with slurs and accents. The bass clef part features a circled '2' and a 'p' dynamic marking. The notation includes eighth notes, quarter notes, and chords with accidentals. A crescendo hairpin is present. The system concludes with a double bar line.

Handwritten musical notation for the third system. The treble clef part includes notes with slurs and accents. The bass clef part features a circled '2' and a 'p' dynamic marking. The notation includes eighth notes, quarter notes, and chords with accidentals. A crescendo hairpin is present. The system concludes with a double bar line.

oder breit

Handwritten musical notation for the fourth system. The treble clef part includes notes with slurs and accents. The bass clef part features a circled '2' and a 'p' dynamic marking. The notation includes eighth notes, quarter notes, and chords with accidentals. A crescendo hairpin is present. The system concludes with a double bar line.

and.

(poco rit)

Handwritten musical notation for piano accompaniment. It features two staves: a treble clef staff and a bass clef staff. The treble staff contains chords with flats (B-flat, E-flat) and some triplets. The bass staff contains a bass line with some triplets. There are dynamic markings like *mf* and *f*, and a circled key signature change to three sharps (F#, C#, G#).

sehr breit (f)

Handwritten musical score for a choir and orchestra. The choir part includes Soprano, Alto, Tenor, and Bass staves with lyrics: "von den Großen dieser Erde melden". The orchestra part includes Violin I, Violin II, and Cello/Double Bass staves. The music is in a key with three sharps (F#, C#, G#) and features triplets and dynamic markings like *pp* and *fff*.

Handwritten musical score for a choir and orchestra. The choir part includes Soprano, Alto, Tenor, and Bass staves with lyrics: "müs die Helden = Lieder". The orchestra part includes Violin I, Violin II, and Cello/Double Bass staves. The music is in a key with three sharps (F#, C#, G#) and features triplets and dynamic markings like *mf* and *f*.

Steigend: auf so wie ge = stürme

Gehu sie wie Se-stigme wieder

Handwritten musical score for the first system. It consists of three staves. The top staff is a vocal line with lyrics "Gehu sie wie Se-stigme" and "wieder". The middle staff is a piano accompaniment with a melodic line. The bottom staff shows chord progressions: a triad of D, F, A in the first measure, and a D major chord with a sharp sign in the second measure.

das klingt tröstlich das klingt tröstlich

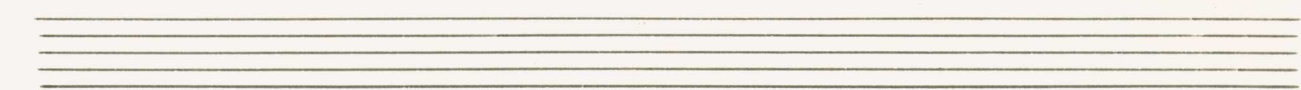
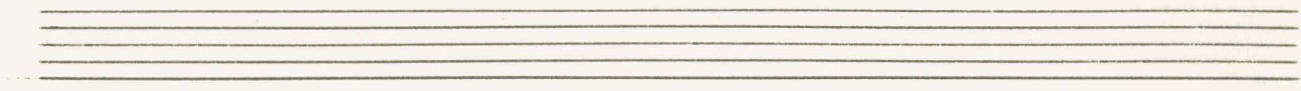
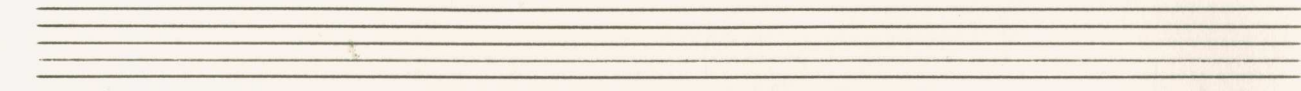
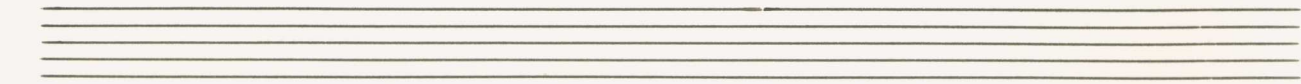
Handwritten musical score for the second system. It consists of three staves. The top staff is a vocal line with lyrics "das klingt tröstlich" and "das klingt tröstlich". The middle staff is a piano accompaniment with a melodic line. The bottom staff shows chord progressions: a D major chord with a sharp sign in the first measure, and D major and D minor chords in the second measure.

Handwritten musical score for the first system. It consists of three staves. The top staff is a vocal line with lyrics: "und man muß es wissen". The notes are: b_0 , b_1 , b_2 , b_3 . The second staff is a piano accompaniment line with notes: b_0 , b_1 , b_2 , b_3 . The bottom staff shows chords: b_0 and b_1 . A vertical line separates the system into two measures.

Handwritten musical score for the second system. It consists of three staves. The top staff is a vocal line with lyrics: "für uns die wir sie nähren müssen". The notes are: b_0 , b_1 , b_2 , b_3 . The second staff is a piano accompaniment line with notes: b_0 , b_1 , b_2 , b_3 . The bottom staff shows chords: b_0 , b_1 , b_2 , b_3 . A vertical line separates the system into two measures.

ist das leider immer ziehnlich gleichge=wesen
(пооо рт)

sehr breit



gut du

Aufstieg oder Fall

wer trägt die Spesen

Aufstieg oder Fall

wer trägt die Spesen

Leute (♩) sehr ruhig

Handwritten musical score for the first system. It consists of three staves: vocal line (treble clef), piano accompaniment (treble and bass clefs), and a bass line (bass clef). The vocal line has lyrics: "Bass Solo freilich dreht das Rad sich immer weiter". The piano accompaniment includes a *pp* dynamic marking and various articulations like accents and slurs. The bass line shows chords and rhythmic patterns.

Handwritten musical score for the second system. It continues the three-staff format from the first system. The vocal line has lyrics: "das was oben ist nicht oben bleibt". The piano accompaniment and bass line continue with similar musical notation and dynamics.

(poco rit)

Handwritten musical score for the first system. It consists of a vocal line and a piano accompaniment. The vocal line has the lyrics: "aber für das Wasser unten heißt das leider". The piano part includes chords and melodic lines. The tempo marking "(poco rit)" is written at the top right.

(frei) auf dein

Handwritten musical score for the second system. It consists of a vocal line and a piano accompaniment. The vocal line has the lyrics: "daß es das Rad halt ewig treibt". The piano part includes chords and melodic lines. The tempo marking "(frei)" is written at the top left.

Tempo (♩) 1

Handwritten musical score for the first system. It consists of three staves. The top staff is a grand staff with a treble clef and a bass clef. The middle staff has a treble clef and contains a series of notes with dynamics *pp* and *pp* circled. The bottom staff has a bass clef and contains notes with dynamics *pp* and *pp* circled. There are various musical notations including slurs, accents, and dynamic markings.

Handwritten musical score for the second system. It consists of three staves. The top staff has a treble clef and contains notes with a *rit.* marking. The middle staff has a treble clef and contains notes with dynamics *p* and *pp*. The bottom staff has a bass clef and contains notes with dynamics *pp* and *pp* circled. There are various musical notations including slurs, accents, and dynamic markings.

(♩) subito ff (nicht schleppend)
 Chor
 Hoch wir hatten viele Hennen hatten

This system contains a vocal line and a piano accompaniment. The vocal line is written in a single staff with lyrics: "Hoch wir hatten viele Hennen hatten". The piano accompaniment consists of two staves (treble and bass clef). The first measure of the piano part features a triplet of eighth notes in both hands, marked with a forte (ff) dynamic. The music is in a key with one sharp (F#) and a 4/4 time signature.

Adler sind Hy = änen

This system continues the musical score with a vocal line and piano accompaniment. The vocal line has the lyrics: "Adler sind Hy = änen". The piano accompaniment continues with similar triplet patterns in both hands. The notation is consistent with the first system, maintaining the key signature and time signature.

(dringende Mittel) →

hatten Adler hatten Schweine

doch wir nähsten den und jenen -

Handwritten musical score for the first system. It features a vocal line with lyrics "doch wir nähsten den und jenen -", a piano accompaniment with chords and notes, and a bass line with a series of notes and a few chords. The piano part includes some markings like "447".

ob sie besser waren

Handwritten musical score for the second system. It features a vocal line with lyrics "ob sie besser waren", a piano accompaniment with chords and notes, and a bass line with notes and chords. There is a handwritten note "(vorwärts ->)" in the bass line. The piano part includes some markings like "447".

Handwritten musical score for piano accompaniment. The score is divided into two systems. The first system has two staves (treble and bass clef). The second system has two staves (treble and bass clef). The music is in a key with one flat (B-flat major or D minor) and a 4/4 time signature. The lyrics "oder schlimmer" are written above the notes in both systems. The notation includes chords, single notes, and rests.

Handwritten musical score for piano accompaniment. The score is divided into two systems. The first system has two staves (treble and bass clef). The second system has two staves (treble and bass clef). The music is in a key with one flat (B-flat major or D minor) and a 4/4 time signature. The lyrics "schlimmer" and "hoch der Stiefel gleich dem Stiefel immer" are written above the notes in both systems. The notation includes chords, single notes, and rests.

(zurück in tempo) (gut)

und uns trat er und uns trat er
 ihr verstellte was ich meine

(sehr frei (breit) rubato) (accel) gut (breit)

sondern keine!

das wir keine andern Herren brauchen

Bass Solo (Leute (A) sehr ruhig)

freilich dreht das Rad sich immer weiter

Daß, was oben ist,

nicht offen bleibt.

Aber für das Wasser

Allegro rit

unten heißt das leider

(frei) (gilt + dir)

mir daß es das Recht halt ewig

6 ⊕ = < > < > 77 > dir >

Tempo $\frac{8}{8}$ (sehr ruhig) —

treibt

pp

Pedale # # # # #

großes gut — — — —

pp

Ped. aus

lento (f) sehr langsam (große Steigerung) cresc. + accel.

ORCH

ppp = #

#

f

f

Handwritten musical score for piano. The score is in G major (one sharp) and 4/4 time. It features a melody in the right hand and a bass line in the left hand. There are dynamic markings *mf* circled in blue ink. The piece concludes with a final chord in the right hand.

Allegro (sehr bewegt)

Handwritten musical score for voice and piano. The score is in G major (one sharp) and 4/4 time. It includes lyrics in German. The lyrics are: "und sie schlagen sich die Köpfe blutig aneinander und sie schlagen schlagen". The score features a vocal line, a piano accompaniment, and a grand staff. There are dynamic markings *mf* circled in blue ink. The piece concludes with a final chord in the right hand.

Beute und sie

sich die Köpfe blutig

schlagen sich die Köpfe blutig

und sie ~~schlagen~~

Handwritten musical score for the first system. It consists of four staves. The top two staves are vocal parts with lyrics: "manfend nun die Beute" and "manfend nun die Beute". The bottom two staves are piano accompaniment. The notation includes notes, rests, and dynamic markings like z .

Handwritten musical score for the second system, continuing from the first. It also consists of four staves with piano accompaniment. The notation includes notes, rests, and dynamic markings like z .

Handwritten musical score for the first system. It consists of three staves: vocal line, piano accompaniment, and a lower piano accompaniment. The lyrics are: "nennen andre gierige Tröpfe".

Vocal Line: Treble clef, 4/4 time. Notes: G4 (nennen), A#4 (andre), G4 (gierige), F#4 (Tröpfe). Dynamics: *mf* (first measure), *mf* (second measure).

Piano Accompaniment (Top): Treble clef. Chords: G4 (nennen), A#4 (andre), G4 (gierige), F#4 (Tröpfe). Dynamics: *mf* (first measure), *mf* (second measure).

Piano Accompaniment (Bottom): Bass clef. Chords: G4 (nennen), A#4 (andre), G4 (gierige), F#4 (Tröpfe). Dynamics: *mf* (first measure), *mf* (second measure).

Handwritten musical score for the second system. It consists of three staves: vocal line, piano accompaniment, and a lower piano accompaniment. The lyrics are: "sind sich selber gute Leute".

Vocal Line: Treble clef, 4/4 time. Notes: G4 (sind), A4 (sich), G4 (selber), F#4 (gute), G4 (Leute). Dynamics: *mf* (first measure), *mf* (second measure).

Piano Accompaniment (Top): Treble clef. Chords: G4 (sind), A4 (sich), G4 (selber), F#4 (gute), G4 (Leute). Dynamics: *mf* (first measure), *mf* (second measure).

Piano Accompaniment (Bottom): Bass clef. Chords: G4 (sind), A4 (sich), G4 (selber), F#4 (gute), G4 (Leute). Dynamics: *mf* (first measure), *mf* (second measure).

und sich selber gute

ff =

f

Leute

ff

f

7

Handwritten musical score for the first system. The upper staff (treble clef) contains a melodic line with a circled **fff** dynamic marking. The lower staff (bass clef) contains a harmonic accompaniment. The music is in 4/4 time and features a key signature of one flat (B-flat).

Handwritten musical score for the second system. The upper staff (treble clef) continues the melodic line, and the lower staff (bass clef) continues the harmonic accompaniment. The music maintains the same key signature and time signature as the first system.

Leute

CHOR (leise / flüsternd - / große Steigerung bis
schreiend)

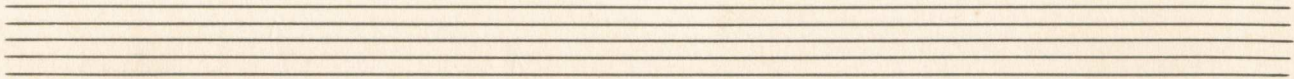
Unerhörlich sehr wir sie
einander zollen - und bekämpfen -
Einzig und alleinig -

ppp

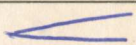
ORCHESTER (mit CHOR / großer Steigerung
bis ppp)

Wessen wir sie nicht mehr erwähnen wollen -

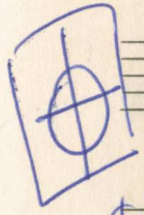
Sind sie sich auf einmal völlig einig



dieses Terzet -
ständig wiederholen -
(durcheinander - u.s.w.) mit immer größerer Erregung:
bis (schreiend fff)



folgt
4/4



sehr breit (pesante) (♩)

ORCH.

Handwritten musical notation for the first system. The treble clef staff contains a melody with notes G4, A4, Bb4, C5, Bb4, A4, G4. The bass clef staff contains a complex accompaniment with many accidentals and slurs. A large blue slur spans across both staves.

großes mit - dünn.

Handwritten musical notation for the second system. The treble clef staff continues the melody with notes Bb4, A4, G4, F4, E4, D4. The bass clef staff continues the accompaniment with notes G3, F3, E3, D3. A large blue slur spans across both staves.

Handwritten musical notation for the third system. The treble clef staff has a circled 'f' and notes G4, A4, Bb4, C5. The bass clef staff has a circled 'f' and notes G4, F4, E4, D4. A large blue slur spans across both staves.

Handwritten musical notation for the fourth system. The treble clef staff has a circled 'p' and notes G4, A4, Bb4, C5. The bass clef staff has a circled 'p' and notes G4, F4, E4, D4. The system ends with a circled 'G.P.' in a box. A large blue slur spans across both staves.

Lento (♩) sehr ruhig

Dem dann dreht das Rad sich nicht weiter
dann dreht das Rad sich nicht weiter

Handwritten musical score for the first system. It consists of three staves: a vocal line (soprano clef), a piano accompaniment (treble and bass clefs), and a pedal line (bass clef). The vocal line has lyrics: "Dem dann dreht das Rad sich nicht weiter". The piano accompaniment features a melody in the right hand and chords in the left hand. The pedal line shows bass notes and dynamic markings like pp and p . There are also circled plus signs (\oplus) in the pedal line.

und das heitere Spiel es unter-bleibt

Handwritten musical score for the second system. It consists of three staves: a vocal line (soprano clef), a piano accompaniment (treble and bass clefs), and a pedal line (bass clef). The vocal line has lyrics: "und das heitere Spiel es unter-bleibt". The piano accompaniment features a melody in the right hand and chords in the left hand. The pedal line shows bass notes and dynamic markings like p . There is a circled plus sign (\oplus) in the pedal line.

(poco rit...)

wenn das Wasser endlich mit befreiter Stärke seine

Handwritten musical score for the third system. It consists of three staves: a vocal line (soprano clef), a piano accompaniment (treble and bass clefs), and a pedal line (bass clef). The vocal line has lyrics: "wenn das Wasser endlich mit befreiter Stärke seine". The piano accompaniment features a melody in the right hand and chords in the left hand. The pedal line shows bass notes and dynamic markings like p and f . There is a circled plus sign (\oplus) in the pedal line.

Tempo (♩)

(frei) breit (n)(n)(n) eigue (n)(n) sprach be= treibt

♯ # ♯ # ♯

lunga

pp # $\frac{3}{4}$ # 0

größtes rit + dü...

$\frac{3}{4}$ # 0

$\frac{3}{4}$ # 0

pp Pedal

$\frac{3}{4}$ # 0

$\frac{3}{4}$ # 0

Lunga n

Fin

1974

Adolf
Scherbaum