

Coplas

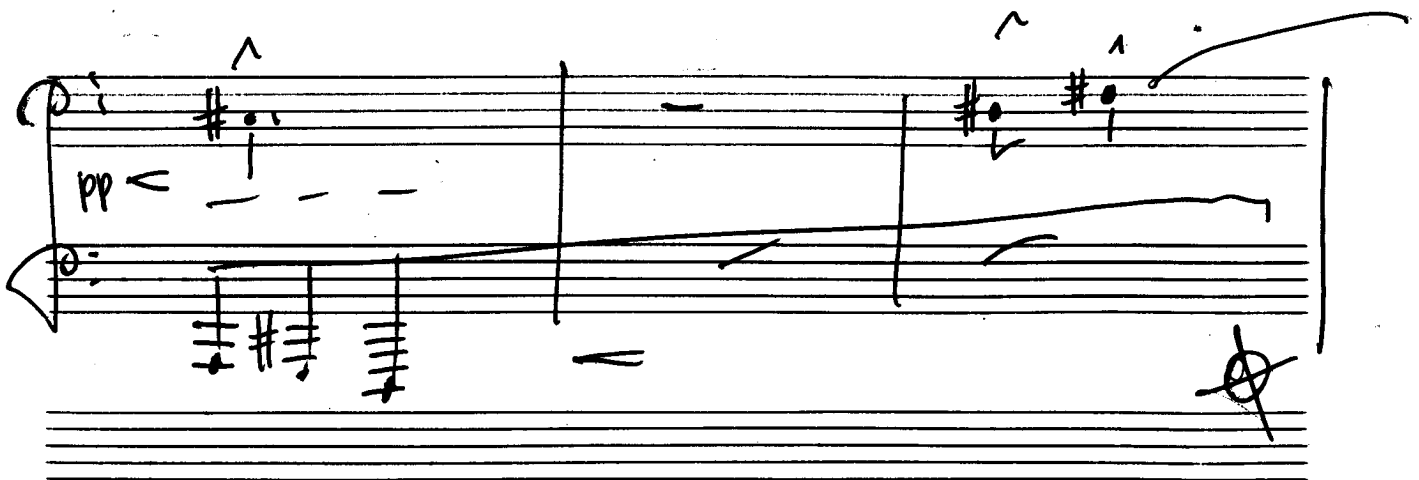
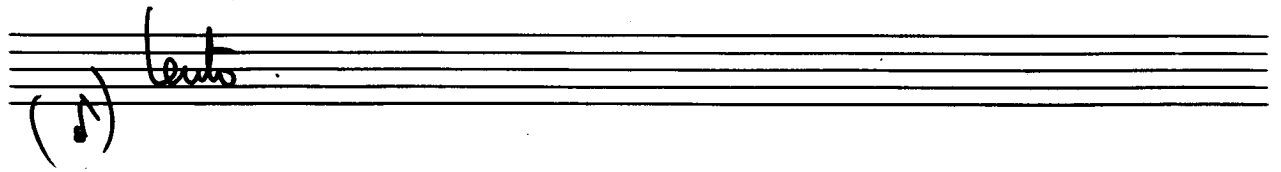
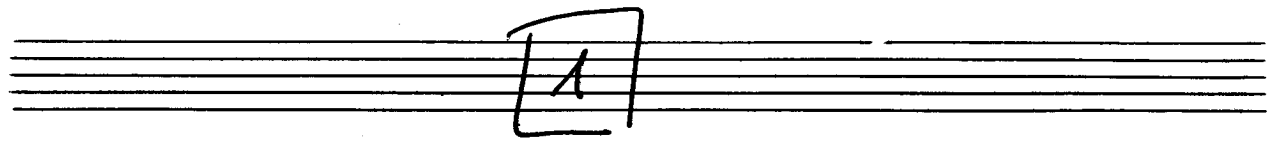
(Strophen.) (Orchesterlied.) (2)

für Bassbariton und  
Orchester

(Klavierauszug)

1975

Adolf Scherbaum



Handwritten musical score for the first system. The top staff is in treble clef with a key signature of one sharp (F#) and a 4/4 time signature. It contains three measures of music with notes and rests, including a wavy line above the first measure and a '4' above the second. A piano (*pp*) dynamic marking is present. The bottom staff is labeled 'Pedal' and contains three measures of chordal accompaniment with a key signature of one sharp (F#).

Handwritten musical score for the second system. The top staff is in treble clef with a key signature of one sharp (F#) and a 4/4 time signature. It contains three measures of music with notes and rests, including accents (^) above the first and second measures. The bottom staff contains three measures of chordal accompaniment with a key signature of one sharp (F#).

Handwritten musical score for the third system. The top staff is in treble clef with a key signature of one sharp (F#) and a 4/4 time signature. It contains three measures of music with notes and rests, including accents (^) above the first and second measures. A piano (*p*) dynamic marking is circled in the first measure. The bottom staff contains three measures of chordal accompaniment with a key signature of one sharp (F#). A circled 'p' is also present at the end of the system.

Handwritten musical score for the first system. The top staff is in treble clef and the bottom staff is in bass clef. The top staff contains notes with slurs and accents. A circled 'p' is written on the left side. Below the bass staff, the word 'Pedal' is written with a downward-pointing arrow.

Handwritten musical score for the second system. The top staff is in treble clef and the bottom staff is in bass clef. The top staff features wavy lines and some notes. The bottom staff contains notes with a 'p' dynamic marking.

Handwritten musical score for the third system. The top staff is in treble clef and the bottom staff is in bass clef. The top staff has notes with accents and a circled 'p'. The bottom staff contains notes.

Handwritten musical score for the first system. The top staff is in treble clef and contains notes with accents (^) and a circled 'f' dynamic marking. The middle staff is in bass clef and features a long slur over several notes, with a circled 'f' dynamic marking. The bottom staff is labeled 'Pedal' and contains a circled 'f' dynamic marking and chordal accompaniment.

Handwritten musical score for the second system. The top staff is in treble clef and contains notes with accents (^) and a circled 'f' dynamic marking. The middle staff is in bass clef and features a long slur over several notes, with a circled 'f' dynamic marking. The bottom staff is labeled 'Pedal' and contains a circled 'f' dynamic marking and chordal accompaniment.

Handwritten musical score for the third system. The top staff is in treble clef and contains notes with accents (^) and a circled 'ff' dynamic marking. The middle staff is in bass clef and features a long slur over several notes, with a circled 'ff' dynamic marking. The bottom staff is labeled 'Pedal' and contains a circled 'ff' dynamic marking and chordal accompaniment.

Empty musical staves at the bottom of the page.

# Descente

Handwritten musical score for the first system. It consists of two staves. The upper staff is in treble clef and contains a melodic line with several notes marked with accents (^) and slurs. The lower staff is in bass clef and contains a bass line with notes and rests. A circled **fff** dynamic marking is present on the left side of the upper staff. The word "Pedal" is written below the lower staff, with a circled **fff** dynamic marking underneath it.

Handwritten musical score for the second system. It consists of two staves. The upper staff is in treble clef and contains a melodic line with notes marked with accents (^) and slurs. The lower staff is in bass clef and contains a bass line with notes and rests. A circled **fff** dynamic marking is present on the left side of the upper staff.

Handwritten musical score for the third system. It consists of two staves. The upper staff is in treble clef and contains a melodic line with notes marked with accents (^) and slurs. The lower staff is in bass clef and contains a bass line with notes and rests. The word "Pedal" is written below the lower staff.

Handwritten musical score for the fourth system. It consists of two staves. The upper staff is in treble clef and contains a melodic line with notes marked with accents (^) and slurs. The lower staff is in bass clef and contains a bass line with notes and rests.

Handwritten musical score for the first system. It consists of a treble clef staff and a bass clef staff. The treble staff begins with a long note (B-flat) with a slur and a fermata, followed by rhythmic patterns. The bass staff contains chords. Below the bass staff, a 'Pedal' section is indicated with a 4/4 time signature and chords.

Handwritten musical score for the second system. It continues the treble and bass staves. The treble staff has a wavy line above the first measure, followed by rhythmic patterns. The bass staff has chords. A double bar line with a fermata symbol is at the end.

Handwritten musical score for the third system, labeled 'großes Viol.' and 'Pedal'. The treble staff has a circled 'III' and rhythmic patterns. The bass staff has chords. A 'CODA' box is at the end.

Handwritten musical score for the fourth system, continuing the treble and bass staves. The treble staff has a circled 'III' and rhythmic patterns. The bass staff has chords. A 'CODA' box is at the end.



(oder langsam)

Handwritten musical notation for the first system. The treble clef staff contains a melodic line with a slur over the first two notes and a fermata over the last note. The bass clef staff contains a bass line with a slur over the first two notes. The dynamic marking 'ppp' is written in the first measure.

Handwritten musical notation for the second system. The treble clef staff contains a melodic line with a slur over the first two notes and a fermata over the last note. The bass clef staff contains a bass line with a slur over the first two notes and a fermata over the last note.

größtes gut

Handwritten musical notation for the third system. The treble clef staff contains a melodic line with a slur over the first two notes and a fermata over the last note. The bass clef staff contains a bass line with a slur over the first two notes and a fermata over the last note.

Handwritten musical notation for the fourth system. The treble clef staff contains a melodic line with a slur over the first two notes and a fermata over the last note. The bass clef staff contains a bass line with a slur over the first two notes and a fermata over the last note.

Pedal

frei (♩) *gras* *das da* *wächst an den* *Wegen* *des*

*treten* *nieder* *die* *Leute*

*breit*

*Pedal*

frei (♩)

Gras das da wächst an den Wegen

das treten nieder die Leute

(erregt) frei

doch auf die Arbeiter - frauen

Arbeiter - frauen da treten hier von der

Meute die haben Geld in den (poco rit)

Klaunen (rit... die)

Pedal

sehr langsam (ruhig)

(♩)

welche Schuld

Handwritten musical score for the first system. The vocal line (soprano clef) contains the lyrics "welche Schuld" and includes a *pp* dynamic marking. The piano accompaniment (treble and bass clefs) features a circled *pp* marking and rests in the first measure.

hat

die! To- mate

Handwritten musical score for the second system. The vocal line (soprano clef) contains the lyrics "hat die! To- mate" and includes a *pp* dynamic marking. The piano accompaniment (treble and bass clefs) features rests in the first measure.

die ruhig hören

Handwritten musical score for the third system. The vocal line (soprano clef) contains the lyrics "die ruhig hören" and includes a *pp* dynamic marking. The piano accompaniment (treble and bass clefs) features rests in the first measure.

an dem Strau-

de (poco rit)

welche Schuld welche

Schild (leuto (1)) großes aut...

Pedal —

subito (attaca)

Ped.

oder Wunsch (except (1)) (1.)

Handwritten musical score for the first system. It features a treble clef, a 2/4 time signature, and a key signature of one sharp (F#). The first staff contains a melody with notes G4, A4, B4, and C5. The second staff contains a bass line with notes G3, A3, B3, and C4. The piece is marked 'mf' and includes a 'Block II' section indicated by a bracket.

Handwritten musical score for the second system. It features a treble clef, a 2/4 time signature, and a key signature of one sharp (F#). The first staff contains a melody with notes G4, A4, B4, and C5. The second staff contains a bass line with notes G3, A3, B3, and C4. The piece is marked 'mf' and includes a 'Block II' section indicated by a bracket.



Solm einer Hure

kommt an der Solm einer

Hure

mit sie in Kisten zu

stauen

frei und schickt und schickt sie ab nach Ca-ra =

*breit* *lento (r)*

*cars*

*pesante (nicht schleppen!)*

Handwritten musical score for the first system. The system consists of two staves. The upper staff is in treble clef and contains a melodic line with several notes, including a half note with a sharp sign, and some notes with accents (^). The lower staff is in bass clef and contains a bass line with several notes, including a half note with a sharp sign and a quarter note with a sharp sign. The key signature is one sharp (F#).

Handwritten musical score for the second system. The system consists of two staves. The upper staff continues the melodic line from the first system, with notes and accents. The lower staff continues the bass line. The key signature remains one sharp (F#).

Handwritten musical score for the third system. The system consists of two staves. The upper staff continues the melodic line. The lower staff shows a change in the bass line, starting with a half note with a flat sign (Bb) and a quarter note with a flat sign (Bb). The key signature changes to one flat (Bb).

großes (dieu + rit)

Handwritten musical notation for the first system. The treble clef staff contains a series of notes with a wavy line above them, followed by a series of eighth notes. The bass clef staff contains a series of notes with a wavy line below them. Dynamic markings include a circled 'f' and '>'.

Handwritten musical notation for the second system. The treble clef staff contains a series of notes with a circled 'p' and '>' marking. The bass clef staff contains a series of notes with a wavy line below them. Dynamic markings include a circled 'p' and '>'.

Handwritten musical notation for the third system. The treble clef staff contains a series of notes with a circled 'p' and '>' marking. The bass clef staff contains a series of notes with a wavy line below them. Dynamic markings include a circled 'p' and '>'.

Handwritten musical notation for the fourth system. The treble clef staff contains a series of notes with a circled '>pp' and '>' marking. The bass clef staff contains a series of notes with a wavy line below them. Dynamic markings include a circled '>pp' and '>'.

*lento*

Herrnen der Grube  
 Geld zu wiegen

haben ge = kauft eine  
 das Geld zu

Waage  
 wiegen  
 eine  
 zu

W a g e (p o l d r i t)

K l a u b e n

frei (breit)

das sie die Worten - Sage dem

A r b e i - t e r

K l a u b e n



Mod. assai (pp) = sempre cresc. + accel. bis ~~Allegro~~  
 die großen Herren der Gnube *Allegro con brio*

(cresc. + accel.)

das Geld zu wiegen      das Geld zu

*Molto con brio*

wiegen      das Geld zu wiegen

das sie      Wochenende dem Arbeiter      rauben

*sehr frei (cappiaucata)*

Texto Wann einmal will Gott im Himmel

Wann einmal will Gott im Himmel

Tango (Steigerung)

(größte Steigerung)

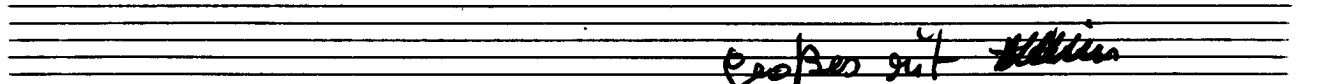
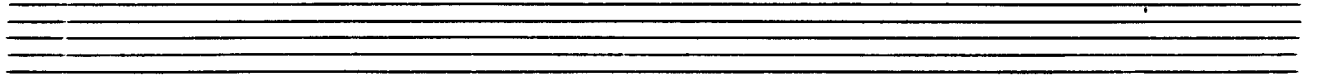
dass der Paukerchen werde sie

(frei)

daß arme essen dann Brot und

(sehr breit und langsam)

Reiche — mit — erda —



großes mit ~~Stücken~~

