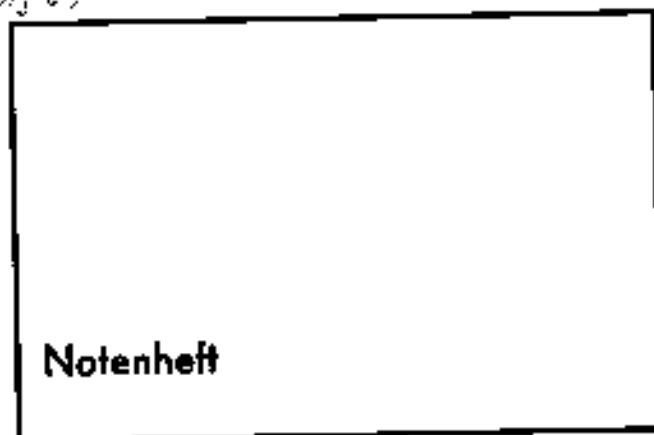


1361

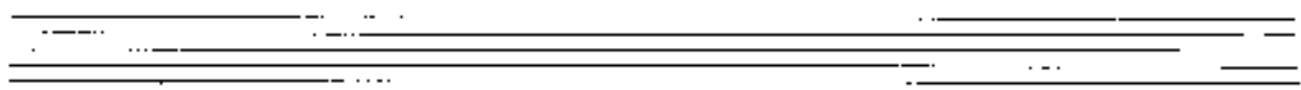


Notenheft

Wagner
für Orchester

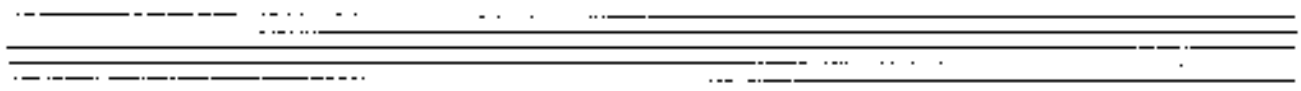
Klavierstücke

176 Adagio sostenuto

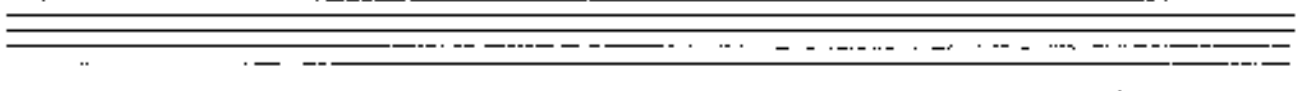
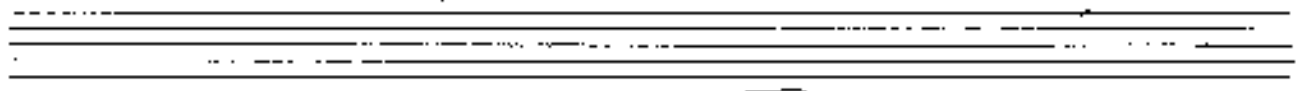


Mod.

1



Cresc. !



Handwritten musical notation for the first system. The treble clef staff contains a half note G#4, a quarter note G#4, and a quarter note G#4. The bass clef staff contains a half note G3, a quarter note G3, and a quarter note G3. There are various accidentals and markings throughout the system.

Handwritten musical notation for the second system. The treble clef staff contains a half note G#4, a quarter note G#4, and a quarter note G#4. The bass clef staff contains a half note G3, a quarter note G3, and a quarter note G3. There are various accidentals and markings throughout the system.

Handwritten musical notation for the third system. The treble clef staff contains a half note G#4, a quarter note G#4, and a quarter note G#4. The bass clef staff contains a half note G3, a quarter note G3, and a quarter note G3. There are various accidentals and markings throughout the system.

Handwritten musical notation for the fourth system. The treble clef staff contains a half note G#4, a quarter note G#4, and a quarter note G#4. The bass clef staff contains a half note G3, a quarter note G3, and a quarter note G3. There are various accidentals and markings throughout the system.

Handwritten musical score system 1. Treble clef. Key signature: one flat (B-flat). The melody is written on a single staff with a treble clef. It features two measures of music, each with a slur over it. The first measure contains notes B-flat, C, D, E, F, G, A, B-flat. The second measure contains notes B-flat, C, D, E, F, G, A, B-flat. The bass line is written on a grand staff (treble and bass clefs). It features two measures of music, each with a slur over it. The first measure contains notes B-flat, C, D, E, F, G, A, B-flat. The second measure contains notes B-flat, C, D, E, F, G, A, B-flat. The tempo is marked *Allegro*.

Handwritten musical score system 2. Treble clef. Key signature: one flat (B-flat). The melody is written on a single staff with a treble clef. It features two measures of music, each with a slur over it. The first measure contains notes B-flat, C, D, E, F, G, A, B-flat. The second measure contains notes B-flat, C, D, E, F, G, A, B-flat. The bass line is written on a grand staff (treble and bass clefs). It features two measures of music, each with a slur over it. The first measure contains notes B-flat, C, D, E, F, G, A, B-flat. The second measure contains notes B-flat, C, D, E, F, G, A, B-flat. The tempo is marked *Allegro*.

Handwritten musical score system 3. Treble clef. Key signature: one flat (B-flat). The melody is written on a single staff with a treble clef. It features two measures of music, each with a slur over it. The first measure contains notes B-flat, C, D, E, F, G, A, B-flat. The second measure contains notes B-flat, C, D, E, F, G, A, B-flat. The bass line is written on a grand staff (treble and bass clefs). It features two measures of music, each with a slur over it. The first measure contains notes B-flat, C, D, E, F, G, A, B-flat. The second measure contains notes B-flat, C, D, E, F, G, A, B-flat. The tempo is marked *Allegro*.

Handwritten musical score system 4. Treble clef. Key signature: one flat (B-flat). The melody is written on a single staff with a treble clef. It features two measures of music, each with a slur over it. The first measure contains notes B-flat, C, D, E, F, G, A, B-flat. The second measure contains notes B-flat, C, D, E, F, G, A, B-flat. The bass line is written on a grand staff (treble and bass clefs). It features two measures of music, each with a slur over it. The first measure contains notes B-flat, C, D, E, F, G, A, B-flat. The second measure contains notes B-flat, C, D, E, F, G, A, B-flat. The tempo is marked *Allegro*.

Handwritten musical notation for the first system. The right hand part consists of three measures with eighth and quarter notes, some beamed together. The left hand part consists of three measures with quarter notes. A dynamic marking of 'p' is present in the first measure of the right hand.

Handwritten musical notation for the second system. The right hand part continues with three measures of eighth and quarter notes. The left hand part continues with three measures of quarter notes. A dynamic marking of 'p' is present in the first measure of the right hand.

Handwritten musical notation for the third system. The right hand part features more complex rhythmic patterns with sixteenth notes. The left hand part continues with quarter notes. A dynamic marking of 'p' is present in the first measure of the right hand.

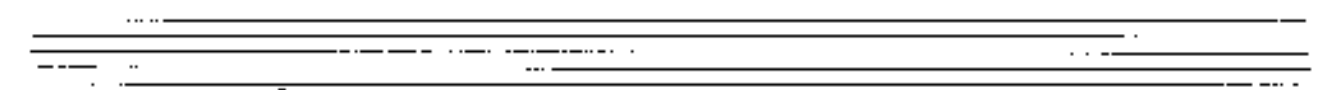
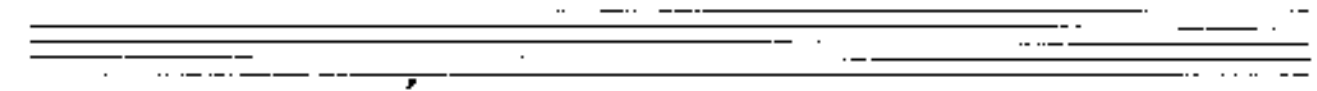
Handwritten musical notation for the fourth system. The right hand part concludes with a quarter note. The left hand part concludes with a quarter note. A dynamic marking of 'p' is present in the first measure of the right hand.

Handwritten musical notation for the first system. The treble clef staff contains a sequence of notes with accidentals (sharps and flats) and slurs. The bass clef staff contains a sequence of notes with accidentals and slurs, including some triplets.

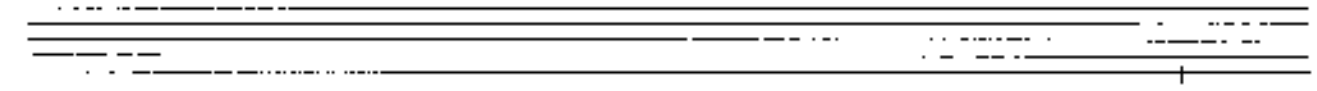
Handwritten musical notation for the second system. The treble clef staff has notes with accidentals and slurs. The bass clef staff features a circled 'f' dynamic marking, notes with accidentals, and slurs. There are also some chordal structures indicated by vertical lines.

Handwritten musical notation for the third system. The treble clef staff has notes with accidentals and slurs. The bass clef staff features a circled 'ff' dynamic marking, notes with accidentals, and slurs. There are also some chordal structures indicated by vertical lines.

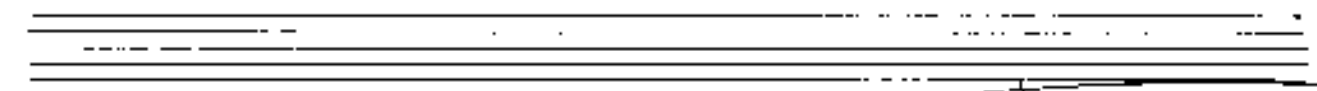
Handwritten musical notation for the fourth system. The treble clef staff has notes with accidentals and slurs. The bass clef staff features a circled 'ff' dynamic marking, notes with accidentals, and slurs. There are also some chordal structures indicated by vertical lines.



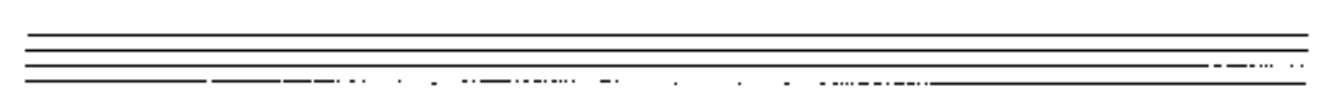
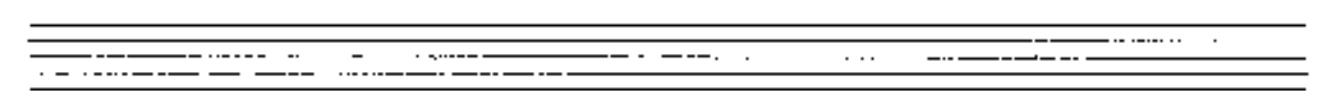
Handwritten musical notation for the first system. The upper staff contains notes with stems and beams, some with dynamic markings like 'p'. The lower staff contains notes with stems and beams, some with dynamic markings like 'p'. There are also some vertical lines and symbols above the upper staff.



Handwritten musical notation for the second system. The upper staff contains notes with stems and beams, some with dynamic markings like 'p'. The lower staff contains notes with stems and beams, some with dynamic markings like 'p'. There are also some vertical lines and symbols above the upper staff.



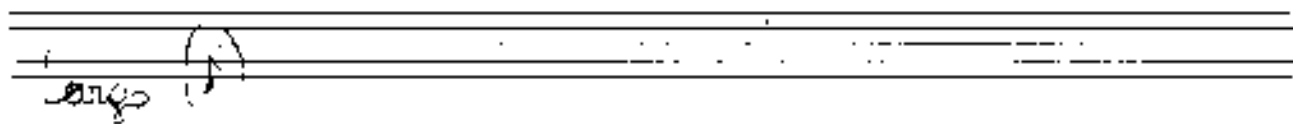
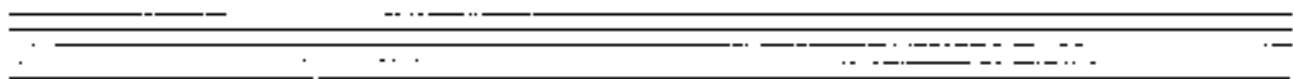
Handwritten musical notation for the third system. The upper staff contains notes with stems and beams, some with dynamic markings like 'p' and 'ff'. The lower staff contains notes with stems and beams, some with dynamic markings like 'p' and 'ff'. There are also some vertical lines and symbols above the upper staff.



Handwritten musical notation for the first system. The upper staff is a vocal line in treble clef with a key signature of one sharp (F#). The lyrics "die" are written below the notes. The lower staff is a piano accompaniment in bass clef. A circled "D" with a double bar line is present in the second measure of the piano part.

Handwritten musical notation for the second system. The upper staff continues the vocal line. The lower staff is the piano accompaniment, starting with a circled "pp" dynamic marking and the instruction "(Piano forte)". The piano part includes some chordal textures and a fermata over the final measure.

Handwritten musical notation for the third system. The upper staff continues the vocal line. The lower staff is the piano accompaniment, starting with a circled "ff" dynamic marking and the instruction "(poco rit...)" written above the staff. The system concludes with a double bar line and the marking "D.C." (Da Capo).



PA 8

Tr.

yy b

yy b

yy #

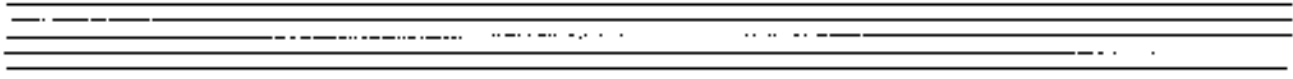
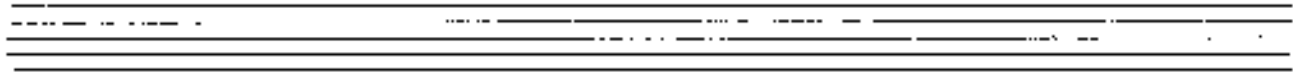
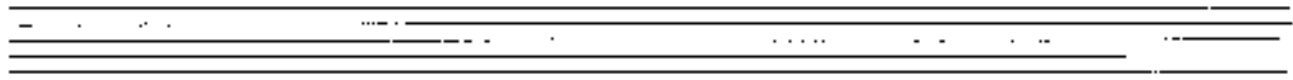
yy #

yy 9

yy 9

yy 9

yy 9



Handwritten musical notation for the first system. It features a treble clef and a circled '11'. The notation includes a melodic line with notes and accidentals, and a bass line with chord symbols. A circled '11' is present in the lower left. The system concludes with the handwritten instruction 'rit + dim'.

Handwritten musical notation for the second system. It begins with a 'piano' marking. The notation is dense with complex chord structures and melodic lines, including various accidentals and slurs. A circled '11' is visible in the lower left.

Handwritten musical notation for the third system. It continues the musical piece with various chord symbols and melodic lines. The notation is somewhat sparse compared to the previous systems.

pesante (f) (rit + dim)

Handwritten musical notation for the fourth system. It features a circled '11' and ends with a double bar line. The notation includes a melodic line and a bass line with chord symbols.

no marking note ⁴ ₅ ⁶ ₇

Handwritten musical notation for the first system. It consists of three staves. The top staff has a treble clef and contains three measures with notes and accidentals. The middle staff has a bass clef and contains three measures with notes and accidentals. The bottom staff has a bass clef and contains three measures with notes and accidentals. A circled 'pp' dynamic marking is present in the first measure of the middle staff. Chord symbols are written above the notes in the middle and bottom staves.

Handwritten musical notation for the second system. It consists of three staves. The top staff has a treble clef and contains three measures with notes and accidentals. The middle staff has a bass clef and contains three measures with notes and accidentals. The bottom staff has a bass clef and contains three measures with notes and accidentals. Chord symbols are written above the notes in the middle and bottom staves. Dynamic markings like 'pp' are present.

Handwritten musical notation for the third system. It consists of three staves. The top staff has a treble clef and contains three measures with notes and accidentals. The middle staff has a bass clef and contains three measures with notes and accidentals. The bottom staff has a bass clef and contains three measures with notes and accidentals. Chord symbols are written above the notes in the middle and bottom staves. Dynamic markings like 'pp' are present.

D.C. al ♩

Tempo (♩)

2

(Andrei)

Handwritten musical notation for the first system. It includes a treble clef, a 4/4 time signature, and a piano (pp) dynamic marking. The melody consists of quarter notes and half notes, with a slur over the first two measures. The bass line features chords with accidentals (sharps and flats) and a slur over the first two measures.

scritto

Handwritten musical notation for the second system. It includes a treble clef and a piano (pp) dynamic marking. The melody consists of quarter notes and half notes. The bass line features chords with accidentals and a slur over the first two measures.

Handwritten musical notation for the third system. It includes a treble clef. The melody consists of quarter notes and half notes. The bass line features chords with accidentals and a slur over the first two measures.

Handwritten musical notation for the first system. The treble clef staff contains a melodic line with notes and accidentals (flats and naturals). The bass clef staff contains a bass line with notes and accidentals. A circled 'p' is written in the first measure of the treble staff. A 'p' with a sharp sign is written in the second measure of the bass staff.

Handwritten musical notation for the second system. The treble clef staff continues the melodic line. The bass clef staff continues the bass line. A 'p' with a sharp sign is written in the second measure of the bass staff.

Cresc. →

Handwritten musical notation for the third system. The treble clef staff continues the melodic line. The bass clef staff continues the bass line. A 'p' with a sharp sign is written in the second measure of the bass staff.

Handwritten musical notation for the fourth system. The treble clef staff continues the melodic line. The bass clef staff continues the bass line. A circled 'p' is written in the second measure of the treble staff.

ola breu (pasante)

Handwritten musical notation for the first system. It features a treble clef and a circled sharp sign (#). The melody consists of several notes with accidentals (sharps and naturals) and a slur. The bass line has a circled sharp sign (#) and a circled letter A. There are also circled letters B and C below the staff.

Handwritten musical notation for the second system. It features a treble clef and a circled sharp sign (#). The melody continues with notes and accidentals, including a slur. The bass line has a circled sharp sign (#) and a circled letter D. There are also circled letters C and D below the staff.

Handwritten musical notation for the third system. It features a treble clef and a circled sharp sign (#). The melody consists of notes with accidentals and a slur. The bass line has a circled sharp sign (#) and a circled letter E. There are also circled letters E and F below the staff.

(auf Brust spielen)

Handwritten musical score for the first system. The top staff is a treble clef with a circled 'p' and a circled 'ppc'. The bottom two staves are a grand staff with 'ppc' in a circle on the left. The system is divided into two measures by a double bar line. The first measure has a treble clef and the second has an alto clef. There are various musical notations including notes, rests, and dynamic markings.

Handwritten musical score for the second system. The top staff is a treble clef with a circled 'p'. The bottom two staves are a grand staff with 'ppc' in a circle on the left. The system is divided into two measures by a double bar line. The first measure has a treble clef and the second has an alto clef. There are various musical notations including notes, rests, and dynamic markings.

Handwritten musical score for the third system. The top staff is a treble clef with a circled 'p'. The bottom two staves are a grand staff with 'ppc' in a circle on the left. The system is divided into two measures by a double bar line. The first measure has a treble clef and the second has an alto clef. There are various musical notations including notes, rests, and dynamic markings.

(steigern in Tempo)

Ad libitum

M N

Andante

Tempo 1 Ad libitum (ritard.)

P P

Q R

P P

2x $\frac{1}{2}$ $\frac{1}{4}$ $\frac{1}{8}$ $\frac{1}{16}$

Handwritten musical score for a piano piece. The score is written on a grand staff consisting of a treble clef and a bass clef. The music is in a key with one flat (B-flat major or E-flat minor) and a common time signature. The piece begins with a *pp* (pianissimo) dynamic marking. The melody in the treble clef features a series of eighth notes in the first measure, followed by a long note with a slur. The bass clef part has a similar rhythmic pattern. The score includes various musical notations such as slurs, ties, and dynamic markings like *pp* and *Cresc.* (Crescendo). The piece concludes with a double bar line and a wavy line indicating the end of the section.

3 Finale

Allegro con brio

(ritard.)

1 2 3 4

ritard.

5 6 7 8 9

ritard.

10 11 12 13

Allargato agitato

Handwritten musical notation for measures 14-17. The system consists of two staves. The upper staff has a circled '14' at the beginning. A slur covers measures 14-17. Measure numbers 14, 15, 16, and 17 are written below the staves.

Handwritten musical notation for measures 18-21. The system consists of two staves. Measure numbers 18, 19, 20, and 21 are written below the staves.

Handwritten musical notation for measures 22-23. The system consists of two staves. Measure numbers 22 and 23 are written below the staves.

Handwritten musical notation for measures 24-26. The system consists of two staves. Measure numbers 24, 25, and 26 are written below the staves.

Handwritten musical notation for measures 27-29. The top staff shows a melodic line with a slur over measures 28 and 29. The bottom staff shows a bass line with chords. Measure numbers 27, 28, and 29 are written below the staves.

Handwritten musical notation for measures 30-32. The top staff shows a melodic line with a slur over measures 31 and 32. The bottom staff shows a bass line with chords. Measure numbers 30, 31, and 32 are written below the staves.

Handwritten musical notation for measures 33-37. The top staff shows a melodic line with a slur over measures 34-37. The bottom staff shows a bass line with chords. Measure numbers 33, 34, 35, 36, and 37 are written below the staves.

Handwritten musical notation for measures 38-42. The top staff shows a melodic line with a slur over measures 38-42. The bottom staff shows a bass line with chords. Measure numbers 38, 39, 40, 41, and 42 are written below the staves. A circled 'P' is written above measure 41. The word "cello" is written vertically below measure 39.

resaultlich möglich

Handwritten musical score for measures 43 and 44. The score is written on two staves (treble and bass clef). Measure 43 features a treble staff with a melodic line and a bass staff with a chordal accompaniment. Measure 44 continues the melodic and harmonic development. A circled 'P' is present in the first measure of measure 43. A large bracket spans across both measures.

Handwritten musical score for measures 45 and 46. The score is written on two staves. Measure 45 shows a treble staff with a melodic line and a bass staff with a chordal accompaniment. Measure 46 continues the melodic and harmonic development. A large bracket spans across both measures.

Handwritten musical score for measures 47, 48, and 49. The score is written on two staves. Measure 47 features a treble staff with a melodic line and a bass staff with a chordal accompaniment. Measure 48 continues the melodic and harmonic development. Measure 49 continues the melodic and harmonic development. A circled 'pp' is present in the first measure of measure 47. A large bracket spans across all three measures.

Handwritten musical score for measures 50, 51, and 52. The score is written on two staves. Measure 50 features a treble staff with a melodic line and a bass staff with a chordal accompaniment. Measure 51 continues the melodic and harmonic development. Measure 52 continues the melodic and harmonic development. A circled 'p' is present in the first measure of measure 50. A large bracket spans across all three measures.

(first part)

53 54 55

second part

56 57 58 59

60 61 62 63

64 65 66 67

25

string.

Handwritten musical score for strings, measures 68-69. The score is written on a grand staff with a treble clef and a 4/4 time signature. A dynamic marking of *mf* is present. The music features a melodic line in the upper voice and a more active bass line. A slur covers both measures, with a dashed line above it indicating a crescendo. Measure numbers 68 and 69 are written below the staff.

and.

Handwritten musical score for strings, measures 70-71. The score is written on a grand staff with a treble clef. A dynamic marking of *and.* is present. The music continues with a melodic line and a bass line. A slur covers both measures, with a dashed line above it indicating a crescendo. Measure numbers 70 and 71 are written below the staff.

Handwritten musical score for strings, measures 72-74. The score is written on a grand staff with a treble clef. A dynamic marking of *and.* is present. The music features a melodic line and a bass line. A slur covers all three measures, with a dashed line above it indicating a crescendo. Measure numbers 72, 73, and 74 are written below the staff.

Tempo \uparrow

Handwritten musical score for strings, measures 75-77. The score is written on a grand staff with a treble clef. A dynamic marking of *mf* is present. A tempo change marking *Tempo \uparrow* is shown in a box above the staff. The music features a melodic line and a bass line. A slur covers all three measures, with a dashed line above it indicating a crescendo. Measure numbers 75, 76, and 77 are written below the staff.

Handwritten musical notation for measures 78-80. The system consists of two staves. The upper staff contains complex chordal structures with various accidentals (sharps, flats, naturals) and some slurs. The lower staff contains a bass line with notes and rests. Measure numbers 78, 79, and 80 are written below the lower staff.

Handwritten musical notation for measures 81-83. The system consists of two staves. The upper staff features complex chordal structures with many accidentals and slurs. The lower staff has a bass line. Measure numbers 81, 82, and 83 are written below the lower staff.

Handwritten musical notation for measures 84-86. The system consists of two staves. The upper staff contains complex chordal structures with many accidentals and slurs. The lower staff has a bass line. Measure numbers 84, 85, and 86 are written below the lower staff.

Handwritten musical notation for measures 87-92. The system consists of two staves. The upper staff contains complex chordal structures with many accidentals and slurs. The lower staff has a bass line. Measure numbers 87, 88, 89, 90, 91, and 92 are written below the lower staff. A circled measure number '91' is visible in the upper staff area.

sempre cresc. ...

(größer Hebungsmenge →)

meno

93 94 95 96 97

98 99 100 101 102

(accel.)

103 104 105 106 107

fast motion Tempo (f)

108 109 110 111 112

Tempo

Handwritten musical score for measures 113-116. The score is written on a grand staff with treble and bass clefs. It features a melodic line in the upper voice and a more complex accompaniment in the lower voice. Measure 113 starts with a circled sharp sign. A slur covers measures 113-115. Measure 116 has a circled lambda symbol. The notes are mostly eighth and quarter notes.

Handwritten musical score for measures 117-120. The score continues on a grand staff. Measure 117 has a circled lambda symbol. A slur covers measures 117-120. The accompaniment features a steady eighth-note pattern in the bass line.

Handwritten musical score for measures 121-124. The score is on a grand staff. Measure 121 has a circled lambda symbol. Measure 122 has a circled 'pp' (pianissimo) dynamic marking. A slur covers measures 121-124. The melodic line shows some chromatic movement.

Handwritten musical score for measures 125-129. The score is on a grand staff. Measure 125 has a circled lambda symbol. A slur covers measures 125-128. Measure 129 has a circled lambda symbol. The melodic line continues with various intervals and accidentals.

folgt (Takt 113 - bis 133)

folgt (Takt 15 - bis 92
(mit pr. ruh...))

oder ruhig (folgt

folgt (43 - 46) folgt (43 - 46)

folgt (47 bis 67) folgt (aus Satz 1 bis 2)

folgt (56 - (Takt 3) aber *pp* bis 67
crescendo | bei 67 *fff*)

folgt (68 - bis 74) folgt (14 - 37)

folgt (75 - 133) folgt (113 - bis 134)

folgt → Coda →

(Prestissimo)

♩ C O P P

The first system of handwritten musical notation consists of two staves. The top staff is in treble clef and contains several notes with stems, some marked with accents (^) and slurs. The bottom staff is in bass clef and contains notes with stems, some marked with accents (^) and slurs. Above the staves, there are dynamic markings including a circled 'ff' and a 'C O P P' marking. A circled '7#' is also present in the first measure of the top staff.

The second system of handwritten musical notation consists of two staves. The top staff is in treble clef and contains notes with stems, some marked with accents (^) and slurs. The bottom staff is in bass clef and contains notes with stems, some marked with accents (^) and slurs. Above the staves, there are dynamic markings including a circled 'ff' and a 'C O P P' marking.

The third system of handwritten musical notation consists of two staves. The top staff is in treble clef and contains notes with stems, some marked with accents (^) and slurs. The bottom staff is in bass clef and contains notes with stems, some marked with accents (^) and slurs. Above the staves, there are dynamic markings including a circled 'ff' and a 'C O P P' marking.

The fourth system of handwritten musical notation consists of two staves. The top staff is in treble clef and contains notes with stems, some marked with accents (^) and slurs. The bottom staff is in bass clef and contains notes with stems, some marked with accents (^) and slurs. Above the staves, there are dynamic markings including a circled 'ff' and a 'C O P P' marking. The system concludes with a double bar line and a large, decorative flourish.