

13'97



Notenheft



Konzert
für Orchester

(Klavierskizze)

1975 Adolf Scherbaum

Mod.

1

Handwritten musical notation for the first system. It features a treble clef, a 3/4 time signature, and a circled 'p' dynamic marking. The notation shows a melodic line in the treble clef and a bass line with rests in the bass clef. A circled '1' is written above the staff.

Cresc. !

Handwritten musical notation for the second system. It features a treble clef, a 3/4 time signature, and a 'Cresc.' marking. The notation shows a melodic line in the treble clef and a bass line with chords in the bass clef.

Handwritten musical notation for the third system. It features a treble clef, a 3/4 time signature, and a 'Cresc.' marking. The notation shows a melodic line in the treble clef and a bass line with chords in the bass clef.

Handwritten musical notation for the first system. The treble clef staff contains a melody line with a slur over the first two measures and a fermata over the third measure. The key signature is one sharp (F#). The bass clef staff contains chords and a fermata. The time signature is 4/4.

Handwritten musical notation for the second system. The treble clef staff contains a melody line with a slur over the first two measures and a fermata over the third measure. The key signature is two flats (Bb, Eb). The bass clef staff contains chords and a fermata. The time signature is 4/4.

Handwritten musical notation for the third system. The treble clef staff contains a melody line with a slur over the first two measures and a fermata over the third measure. The key signature is one sharp (F#). The bass clef staff contains chords and a fermata. The time signature is 4/4.

Handwritten musical notation for the fourth system. The treble clef staff contains a melody line with a slur over the first two measures and a fermata over the third measure. The key signature is one sharp (F#). The bass clef staff contains chords and a fermata. The time signature is 4/4.

Handwritten musical score system 1. It consists of two staves. The upper staff is in treble clef and contains a melodic line with a circled plus sign at the beginning. The notes are: G4, A4, B4, C5, D5, E5, F5, G5. The lower staff is in bass clef and contains a bass line with notes: G2, A2, B2, C3, D3, E3, F3, G3. There are dynamic markings 'ff' and 'ff' above the staff, and a fermata over the final notes of both staves.

Handwritten musical score system 2. It consists of two staves. The upper staff is in treble clef and contains a melodic line with notes: G4, A4, B4, C5, D5, E5, F5, G5. The lower staff is in bass clef and contains a bass line with notes: G2, A2, B2, C3, D3, E3, F3, G3. There are dynamic markings 'ff' and 'ff' above the staff, and a fermata over the final notes of both staves.

Handwritten musical score system 3. It consists of two staves. The upper staff is in treble clef and contains a melodic line with notes: G4, A4, B4, C5, D5, E5, F5, G5. The lower staff is in bass clef and contains a bass line with notes: G2, A2, B2, C3, D3, E3, F3, G3. There are dynamic markings 'ff' and 'ff' above the staff, and a fermata over the final notes of both staves.

Handwritten musical score system 4. It consists of two staves. The upper staff is in treble clef and contains a melodic line with notes: G4, A4, B4, C5, D5, E5, F5, G5. The lower staff is in bass clef and contains a bass line with notes: G2, A2, B2, C3, D3, E3, F3, G3. There are dynamic markings 'ff' and 'ff' above the staff, and a fermata over the final notes of both staves.

Handwritten musical notation for the first system. The upper staff is in treble clef and contains a melodic line with notes and accidentals (flats and naturals) under a slur. The lower staff is in bass clef and contains a bass line with notes and accidentals. There are some handwritten annotations like 'b b' and 'p'.

Handwritten musical notation for the second system. The upper staff is in treble clef and contains a melodic line with notes and accidentals under a slur. The lower staff is in bass clef and contains a bass line with notes and accidentals. There are some handwritten annotations like 'b b' and 'p'.

Handwritten musical notation for the third system. The upper staff is in treble clef and contains a melodic line with notes and accidentals under a slur. The lower staff is in bass clef and contains a bass line with notes and accidentals. There are some handwritten annotations like 'din' and '>'.

Handwritten musical notation for the fourth system. The upper staff is in treble clef and contains a melodic line with notes and accidentals under a slur. The lower staff is in bass clef and contains a bass line with notes and accidentals. There are some handwritten annotations like 'din' and '>'.

Handwritten musical notation for the first system, measures 1-3. The treble clef staff contains a melody with notes b^2 , d^3 , b^2 , d^3 , b^2 , d^3 . The bass clef staff contains a bass line with notes b^2 , b^1 , b^2 , b^1 , b^2 , b^1 . A circled 'p' is written in the first measure.

Handwritten musical notation for the second system, measures 4-7. The treble clef staff contains a melody with notes b^2 , d^3 , b^2 , d^3 , $\#^2$, d^3 , b^2 , d^3 . The bass clef staff contains a bass line with notes b^2 , b^1 , b^2 , b^1 , b^2 , b^1 , $\#^2$, b^1 . A circled 'p' is written in the first measure.

Handwritten musical notation for the third system, measures 8-11. The treble clef staff contains a melody with notes $\#^2$, d^3 , $\#^2$, d^3 , $\#^2$, d^3 , b^2 , d^3 . The bass clef staff contains a bass line with notes $\#^2$, b^1 , $\#^2$, b^1 , $\#^2$, b^1 , b^2 , b^1 . A circled 'p' is written in the first measure.

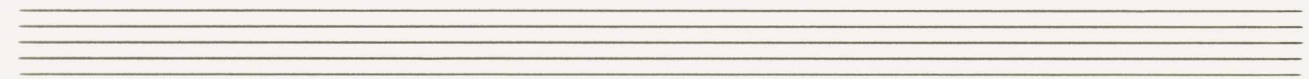
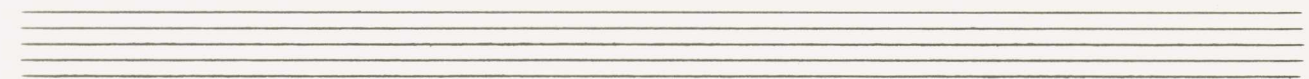
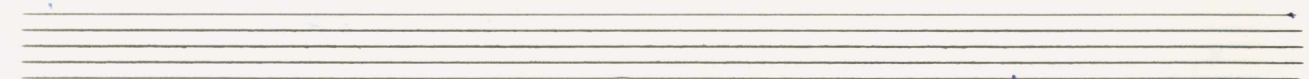
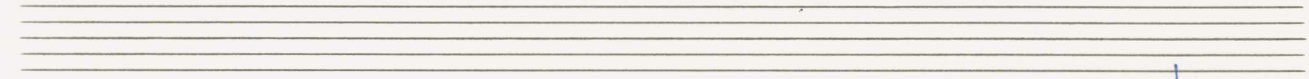
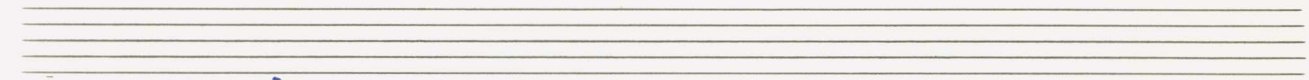
Handwritten musical notation for the fourth system, measures 12-14. The treble clef staff contains a melody with notes b^2 , b^2 , d^3 , b^2 , b^2 , d^3 . The bass clef staff contains a bass line with notes b^2 , b^1 , b^2 , b^1 , b^2 , b^1 , b^2 , b^1 . A circled 'p' is written in the first measure.

Handwritten musical notation for the first system. The treble clef staff contains notes with a sharp sign (#) and a flat sign (b). The bass clef staff contains notes with a sharp sign (#) and a flat sign (b), along with a circled sharp sign (#) and a circled flat sign (b). There are slurs and accents (^) over the notes.

Handwritten musical notation for the second system. The treble clef staff has notes with a double flat sign (bb) and a sharp sign (#). The bass clef staff has notes with a flat sign (b) and a sharp sign (#), and a circled 'f' dynamic marking. There are slurs and accents (^) over the notes.

Handwritten musical notation for the third system. The treble clef staff has notes with a sharp sign (#) and a flat sign (b). The bass clef staff has notes with a sharp sign (#) and a flat sign (b), and a circled 'ff' dynamic marking. There are slurs and accents (^) over the notes.

Handwritten musical notation for the fourth system. The treble clef staff has notes with a sharp sign (#) and a flat sign (b). The bass clef staff has notes with a flat sign (b) and a sharp sign (#), and a circled sharp sign (#). There are slurs and accents (^) over the notes.



Handwritten musical notation for the first system. The treble clef staff contains a melodic line with a sharp sign and various note values. A dynamic marking *pp* is circled. The word "die" is written below the staff.

Handwritten musical notation for the second system. The treble clef staff contains a melodic line with a sharp sign and various note values. A dynamic marking *pp* is circled. The text "(Parkeren gr. tr.)" is written below the staff.

Handwritten musical notation for the third system. The treble clef staff contains a melodic line with a sharp sign and various note values. A dynamic marking *pp* is circled. The text "(poco rit.....)" is written below the staff. The system ends with a double bar line and the text "D.C."

Largo (♩)

Handwritten musical score for the first system. It consists of three staves. The top staff is in treble clef with a key signature of one flat (B-flat) and a 6/8 time signature. It contains two measures of music with notes and rests, and a circled *pp* dynamic marking. The middle staff is in bass clef with a key signature of one flat and a 6/8 time signature, also containing two measures of music and a circled *pp* dynamic marking. The bottom staff is labeled "p. tr." and contains a long, sweeping line with a slur and a fermata, indicating a sustained or glissando effect. Below the bottom staff, there are some handwritten notes and symbols, including a treble clef with a sharp sign and a bass clef with a flat sign.

Handwritten musical score for the second system. It consists of two staves. The top staff is in treble clef with a key signature of one flat and a 6/8 time signature, containing two measures of music. The bottom staff is in bass clef with a key signature of one flat and a 6/8 time signature, also containing two measures of music. A long, sweeping line with a slur and a fermata spans across both staves, indicating a sustained or glissando effect.

Handwritten musical score system 1. It consists of two staves. The upper staff contains a melodic line with notes and accidentals, including a circled 'P' and a circled '47'. The lower staff is mostly empty with some horizontal lines. A dynamic marking '(poco rit)' is written in the right margin.

Handwritten musical score system 2. It consists of two staves. The upper staff has a circled '8' and contains several chords and notes. The lower staff has a circled '11' and contains notes with stems. There are various accidentals and dynamic markings throughout.

Handwritten musical score system 3. It consists of two staves. The upper staff contains several chords and notes. The lower staff contains notes with stems and accidentals. The system ends with a double bar line.

pesante (♩) (rit + din)

Handwritten musical score system 4. It consists of two staves. The upper staff contains a melodic line with notes and accidentals, including a circled 'P'. The lower staff is mostly empty with some horizontal lines. The system ends with a double bar line.

so ruhig wie möglich

Handwritten musical notation for the first system. It consists of three staves: a treble clef staff, a grand staff (treble and bass clefs), and a bass clef staff. The treble staff contains three measures with notes and accidentals: $b^b a^b$, $b^b a^b$, and $\# a^b$. The grand staff contains chords and notes: $b^b a^b$, $b^b a^b$, and $\# a^b$. The bass staff contains notes and accidentals: $b^b a^b$, $b^b a^b$, and $\# a^b$. A circled pp dynamic marking is present in the first measure of the grand staff.

Handwritten musical notation for the second system. It consists of three staves: a treble clef staff, a grand staff (treble and bass clefs), and a bass clef staff. The treble staff contains three measures with notes and accidentals: $b^b a^b$, $b^b a^b$, and $b^b a^b$. The grand staff contains chords and notes: $b^b a^b$, $b^b a^b$, and $b^b a^b$. The bass staff contains notes and accidentals: $b^b a^b$, $b^b a^b$, and $b^b a^b$.

Handwritten musical notation for the third system. It consists of three staves: a treble clef staff, a grand staff (treble and bass clefs), and a bass clef staff. The treble staff contains three measures with notes and accidentals: $b^b a^b$, $b^b a^b$, and $b^b a^b$. The grand staff contains chords and notes: $b^b a^b$, $b^b a^b$, and $b^b a^b$. The bass staff contains notes and accidentals: $b^b a^b$, $b^b a^b$, and $b^b a^b$.

Handwritten musical notation for the first system. It consists of three staves. The top staff has a treble clef and a double bar line. The middle staff has a double bar line. The bottom staff has a bass clef and contains a few notes with accidentals (flats and naturals). To the right of the staves, the instruction "D.c. ad ♩" is written in blue ink.

Handwritten musical notation for the second system. It consists of three staves. The top staff has a treble clef and contains a circled sharp symbol (♯) followed by a series of notes with various accidentals (flats, naturals, sharps) and a triplet marking. The middle staff has a bass clef and contains notes with accidentals. The bottom staff has a bass clef and contains notes with accidentals. There are several circled sharp symbols (♯) and other markings throughout the system.

Handwritten musical notation for the third system. It consists of three staves. The top staff has a treble clef and contains notes with various accidentals. The middle staff has a bass clef and contains notes with accidentals. The bottom staff has a bass clef and contains notes with accidentals. There are several circled sharp symbols (♯) and other markings throughout the system.

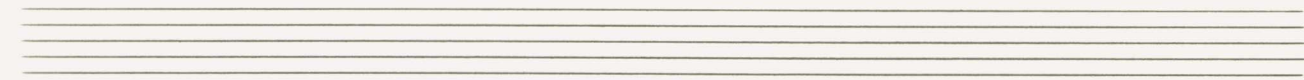
Handwritten musical score for the first system. The treble clef has a key signature of one flat (B-flat). The bass clef has a key signature of one sharp (F-sharp). The music consists of a melodic line in the treble and a bass line. The bass line features a long horizontal line across the first two measures. Annotations include a circled "gutes (rit)" and various accidentals.

Handwritten musical score for the second system. The treble clef has a key signature of one flat (B-flat). The bass clef has a key signature of one sharp (F-sharp). The music consists of a melodic line in the treble and a bass line. The bass line features a long horizontal line across the first two measures. Annotations include a circled "gutes (rit)" and various accidentals.

longo (♩)

2

(Admet)



Handwritten musical notation for the first system. It consists of two staves. The upper staff has a treble clef and contains a melodic line with notes and accidentals (flats and sharps). The lower staff has a bass clef and contains a bass line with notes and accidentals. A circled 'p' is written to the left of the first measure. A bar line is present, with a circled 'p' and a sharp sign below it in the second measure.

Handwritten musical notation for the second system, similar to the first. It features two staves with treble and bass clefs. The notation includes various notes, accidentals, and a bar line. A circled 'p' is visible below the second measure.

Cresc. →

Handwritten musical notation for the third system, following the 'Cresc.' marking. It consists of two staves with treble and bass clefs. The notation includes notes, accidentals, and a bar line. A circled 'p' is written below the second measure.

Handwritten musical notation for the fourth system. It consists of two staves with treble and bass clefs. The notation includes notes, accidentals, and a bar line. A circled 'p' is written below the second measure.

schwer (pesante)

Handwritten musical notation for the first system. It features a treble clef and a circled sharp sign (#). The melody consists of several notes with accidentals (flats and sharps) and a circled letter 'A' below the staff. The bass line shows a chord with a flat and a circled letter 'B' below it.

Handwritten musical notation for the second system. It features a treble clef and a circled letter 'C' below the staff. The melody continues with notes and accidentals, and a circled letter 'D' is placed below the staff. The bass line shows a chord with a sharp and a circled letter 'D' below it.

Handwritten musical notation for the third system. It features a treble clef and a circled letter 'E' below the staff. The melody includes notes with accidentals and a circled letter 'P' below the staff. The bass line shows a chord with a flat and a circled letter 'P' below it.

(äußerst ruhig)

Handwritten musical score for the first system. The treble clef staff contains a melodic line with a circled *p* dynamic marking. The grand staff below contains piano accompaniment with a circled *ppp* marking. The system ends with a fermata and the letter *G* below the staff.

Handwritten musical score for the second system. The treble clef staff continues the melodic line with a circled *f* dynamic marking. The grand staff continues the piano accompaniment. The system concludes with a fermata.

Handwritten musical score for the third system. The treble clef staff continues the melodic line. The grand staff continues the piano accompaniment. The system concludes with a fermata and the letter *K* below the staff.

(Skizzen im Tempo)

sehr breit

M N

sehr

Tempo [1] *sehr breit*
(ruhig)

Schlagwerk

(P)

Q R

dim

(p) (pp)

(p) (pp)

1x D.C. (obse!!)
2x dal g al φ

Handwritten musical score for a piano concerto, measures 37-38. The score is written in blue ink on a page with ten blank staves below. It features a treble clef, a key signature of one flat (B-flat), and a common time signature. The music includes a melody in the treble clef and accompaniment in the bass clef. The first measure of the system is marked 'pp' in a circle. The second measure has a circled '38' next to it. The third measure is marked 'ppp' and 'Lunga'. The fourth measure is marked '38' and 'A'. The system ends with a wavy line indicating a fermata or a specific ending. The notes are mostly whole notes and half notes, with some sixteenth notes in the bass clef. There are also some handwritten annotations like '7b' and '7b' in the bass clef.

3 Finale

Allegro con brio

(rubato)

1 2 3 4

Lento

(rit)

(sehr breit)

5 6 7 8 9

sehr breit

(accel...)

10 11 12 13

Alllegro agitato

14 15 16 17

18 19 20 21

22 23

24 25 26

Handwritten musical score for measures 27-29. The top staff is in treble clef with a key signature of one flat (B-flat). The bottom staff is in bass clef. Measure 27 has a whole note chord with notes G2, B-flat2, and D3. Measure 28 has a whole note chord with notes G2, B-flat2, and D3, followed by a fermata. Measure 29 has a whole note chord with notes G2, B-flat2, and D3, followed by a fermata.

Handwritten musical score for measures 30-32. The top staff is in treble clef with a key signature of one flat (B-flat). The bottom staff is in bass clef. Measure 30 has a whole note chord with notes G2, B-flat2, and D3. Measure 31 has a whole note chord with notes G2, B-flat2, and D3, followed by a fermata. Measure 32 has a whole note chord with notes G2, B-flat2, and D3, followed by a fermata.

Handwritten musical score for measures 33-37. The top staff is in treble clef with a key signature of one flat (B-flat). The bottom staff is in bass clef. Measure 33 has a whole note chord with notes G2, B-flat2, and D3. Measure 34 has a whole note chord with notes G2, B-flat2, and D3. Measure 35 has a whole note chord with notes G2, B-flat2, and D3. Measure 36 has a whole note chord with notes G2, B-flat2, and D3. Measure 37 has a whole note chord with notes G2, B-flat2, and D3.

Handwritten musical score for measures 38-42. The top staff is in treble clef with a key signature of one flat (B-flat). The bottom staff is in bass clef. Measure 38 has a whole note chord with notes G2, B-flat2, and D3. Measure 39 has a whole note chord with notes G2, B-flat2, and D3. Measure 40 has a whole note chord with notes G2, B-flat2, and D3. Measure 41 has a whole note chord with notes G2, B-flat2, and D3. Measure 42 has a whole note chord with notes G2, B-flat2, and D3.

wesentlich ruhiger

43 44

45 46

47 48 49

50 51 52

(poco rit)

Handwritten musical notation for measures 53-55. The top staff shows chords with accidentals (b, +) and a fermata. The bottom staff shows a melodic line with triplets and slurs. Measure numbers 53, 54, and 55 are written below the staff.

sehr breit

Handwritten musical notation for measures 56-59. The top staff shows chords with accidentals (b, +) and a circled 'ff'. The bottom staff shows chords and a melodic line. Measure numbers 56, 57, 58, and 59 are written below the staff.

Handwritten musical notation for measures 60-63. The top staff shows chords with accidentals (#) and a fermata. The bottom staff shows chords and a melodic line. Measure numbers 60, 61, 62, and 63 are written below the staff.

Handwritten musical notation for measures 64-67. The top staff shows chords with accidentals (#) and a fermata. The bottom staff shows chords and a melodic line. Measure numbers 64, 65, and 67 are written below the staff.

string.

Handwritten musical notation for strings, measures 68-69. The system includes a treble clef staff and a bass clef staff. Measure 68 features a melodic line in the treble clef with notes G4, A4, Bb4, C5, and a bass line with notes G2, F2, E2, D2. Measure 69 continues the melodic line with notes Bb4, A4, G4, F4 and the bass line with notes G2, F2, E2, D2. A handwritten "4" is written below the bass clef staff in measure 68.

cel.

Handwritten musical notation for cello, measures 70-71. The system includes a treble clef staff and a bass clef staff. Measure 70 features a melodic line in the treble clef with notes G4, A4, Bb4, C5 and a bass line with notes G2, F2, E2, D2. Measure 71 continues the melodic line with notes Bb4, A4, G4, F4 and the bass line with notes G2, F2, E2, D2. A handwritten "4" is written below the bass clef staff in measure 70.

Handwritten musical notation for cello, measures 72-74. The system includes a treble clef staff and a bass clef staff. Measure 72 features a melodic line in the treble clef with notes G4, A4, Bb4, C5 and a bass line with notes G2, F2, E2, D2. Measure 73 continues the melodic line with notes Bb4, A4, G4, F4 and the bass line with notes G2, F2, E2, D2. Measure 74 continues the melodic line with notes Bb4, A4, G4, F4 and the bass line with notes G2, F2, E2, D2. A handwritten "4" is written below the bass clef staff in measure 72.

Tempo \uparrow

Handwritten musical notation for strings, measures 75-77. The system includes a treble clef staff and a bass clef staff. Measure 75 features a melodic line in the treble clef with notes G4, A4, Bb4, C5 and a bass line with notes G2, F2, E2, D2. Measure 76 continues the melodic line with notes Bb4, A4, G4, F4 and the bass line with notes G2, F2, E2, D2. Measure 77 continues the melodic line with notes Bb4, A4, G4, F4 and the bass line with notes G2, F2, E2, D2. A handwritten "4" is written below the bass clef staff in measure 75.

78 79 80

81 82 83

84 85 86

87 88 89 90 91 92

rit

p

sempre cresc... (große Steigerungen →)

meno

pp

p3 p4 p5 p6 p7

p8 p9 p10 p11 p12

(accel.....)

p13 p14 p15 p16 p17

fast oder Tempo ①

p18 p19 p20 p21 p22

Tempo 1

Handwritten musical score for measures 113-116. The score is written on a grand staff with treble and bass clefs. Measure 113 starts with a treble clef and a key signature of one sharp (F#). The music features a melodic line in the treble and a bass line in the bass. A circled '1' is written in the treble clef area. A slur covers measures 113-115. Measure 116 has a dynamic marking of mf .

Handwritten musical score for measures 117-120. The score continues on the grand staff. Measure 117 has a dynamic marking of mf . Measure 118 has a dynamic marking of mf . Measure 119 has a dynamic marking of mf . Measure 120 has a dynamic marking of mf . A slur covers measures 117-120.

Handwritten musical score for measures 121-124. The score continues on the grand staff. Measure 121 has a dynamic marking of pp . Measure 122 has a dynamic marking of pp . Measure 123 has a dynamic marking of pp . Measure 124 has a dynamic marking of pp . A slur covers measures 121-124. A circled '1' is written in the treble clef area.

Handwritten musical score for measures 125-129. The score continues on the grand staff. Measure 125 has a dynamic marking of f . Measure 126 has a dynamic marking of f . Measure 127 has a dynamic marking of f . Measure 128 has a dynamic marking of f . Measure 129 has a dynamic marking of f . A slur covers measures 125-129.

folgt (Takt 113 — bis 133) ||

folgt (Takt 75 — bis 92
(mit gr. rit...)) ||

sehr ruhig (folgt

(folgt 43 — 46) folgt (43 — 46) ||

(folgt 47 bis 67) folgt (aus Satz 2 17 bis 18) ||

(folgt 56 — (Satz 3) aber pp bis 67
crescendo (bei 67 fff) —

folgt 68 — bis 74) folgt (14 — 37 —)

(folgt 75 — 133 —) folgt 113 bis 121)

folgt → CODA →

(Prestissimo)

♩ CODA

Handwritten musical notation for the first system. It consists of two staves. The top staff is in treble clef and contains a series of notes with various accidentals (sharps, flats, naturals) and slurs. The bottom staff is in bass clef and contains notes with accidentals, including a circled '7#'. There are also some vertical lines and symbols above the staves.

Handwritten musical notation for the second system. It consists of two staves. The top staff has notes with slurs and accents. The bottom staff has notes with slurs and accents, including a circled '7#'. There are also some vertical lines and symbols above the staves.

Handwritten musical notation for the third system. It consists of two staves. The top staff has a complex rhythmic pattern with many notes and slurs. The bottom staff has notes with slurs and accents, including a circled '7#'. There are also some vertical lines and symbols above the staves.

Handwritten musical notation for the fourth system. It consists of two staves. The top staff has a complex rhythmic pattern with many notes and slurs. The bottom staff has notes with slurs and accents, including a circled '7#'. There is a large flourish at the end of the system and the number '148' written next to it.