

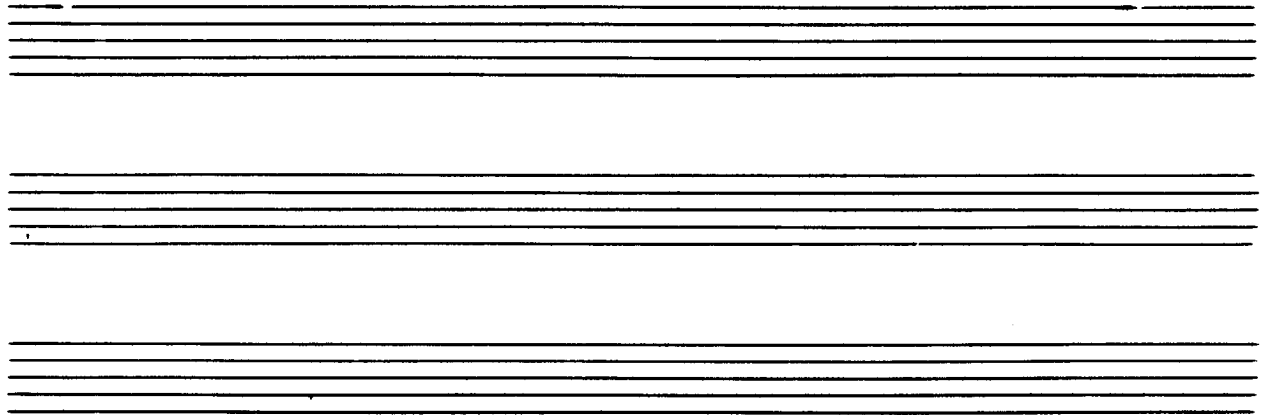
KONZERT FÜR FLÖTE

in 7 Teilen

1976

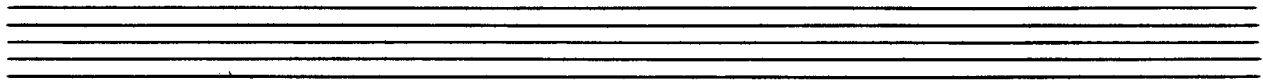
Adolf Scherbaum

**Notenheft**



Hauptreihe:

Handwritten musical notation for the main series (Hauptreihe) on a single staff. It shows a sequence of notes with fingerings 1-12 and breath marks above them.

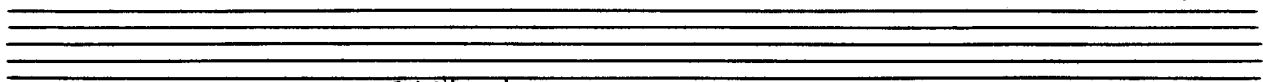


Flöte Live (Tonband)

Elektronenorgel Live + (Tonband)

Tonbandmontagen

mehrere große Lautsprecher (die auf der Bühne und im Saal verteilt aufgestellt werden)

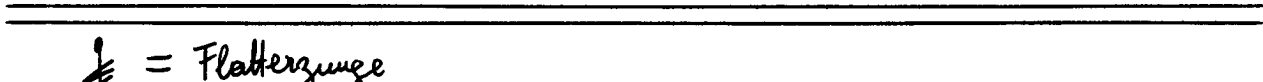


= viel Vibrato

= dichter Triller

oder = Cluster (zwei Tontraben / Lauter kleine Sec. und ev. Sec.)

= bedeutet von der Hauptnote im letzten Moment ein glissando (oder statt gliss.) nachher Tonfolgen (die auf einem Blasinstrument möglich sind - verboten natürlich Tonleitern der alten Harmonielehre.)



= Flatterzunge

= bedeutet freie Improvisationen des jeweiligen Solisten. (wenn möglich nach der Hauptreihe)

# Teil 1

Flöte

Elektronen-  
Orgel

15 Sek.

Clusken

pppp

fff

frei

fff

(flaumend)

Handwritten musical score for the first system. It consists of five staves. The top staff has a circled 'p' and the text '10 sek.' above it. A diagonal line starts from the bottom left of the piano part and extends to the top right of the flute part. The piano part is marked 'ppp' and 'Cluster', and the flute part is marked 'ffff'.

Handwritten musical score for the second system. The top staff is marked 'frei' in a box and contains complex rhythmic and melodic notation with various accidentals and slurs. The piano part below has several rests. The system is divided into two measures by a vertical dashed line.

Lento

VIBRATO

pp < > ff > ff > pp

8

8

8

8

pp < f > ff > pp < f > =

8

8

8

8

8

accel. →

pp >

1 2 3 4 5 6 7 8 9

7777

(hohl) (viel Vibrato)

pp >

pp <

5 Sek.

PAUSE

ppp

lange halten

# Teil 2

(1)

ppp (vibrato)

(8 Sek.)

(8 Sek.)

(frei) (r) (l)

*rubato*

5 Sec.

pp < p < ff < ppp < ff > pp

*rubato*

5 Sec.

pp < p < ff < ppp < ff > pp

5  
Sec.  
P  
A  
U  
S  
E



# Teil 3

TONBAND 1

(A) (live) *lento*

viel VIBR.

Handwritten musical score for the first system. The top staff is a treble clef with a 4/4 time signature. It contains a melodic line with notes G4, A4, B4, C5, and D5. Dynamics include *pp*, *fp*, and *ffp*. A large slur covers the first two measures, and a smaller slur covers the last two. A vibrato marking is present over the final note. The piano accompaniment consists of a single note G4 in the right hand and a whole note chord (F#4, G4, A4) in the left hand. The bottom two staves show a piano accompaniment with a bass line and chords.

Handwritten musical score for the second system. The top staff continues the melodic line with notes E5, F#5, G5, and A5. Dynamics include *ffp*. The piano accompaniment continues with the same harmonic structure as the first system.

Handwritten musical score for the first system. The top staff is for the flute, and the bottom two staves are for the piano. The flute part begins with a *pp* dynamic and includes a slur over a series of notes, with a circled  $\oplus$  and  $\#$  below. A large slur covers the final notes, which are marked with a *pp* dynamic and a  $b^1$  marking. The piano accompaniment consists of a series of notes in the right hand and sustained chords in the left hand.

Handwritten musical score for the second system. The flute part continues with a *pp* dynamic and includes a slur over notes, with a circled  $\oplus$  and  $\#$  below. A large slur covers the final notes, which are marked with a *pp* dynamic and a  $b^1$  marking. The piano accompaniment continues with notes in the right hand and sustained chords in the left hand.

Handwritten musical score system 1. It features five staves. The top staff has a treble clef and a wavy line. The second staff has a treble clef, a key signature of one flat (B-flat), a time signature of 4/4, and the dynamic marking "pp". Above the staff are handwritten notes "49" and "4444". The third staff contains a melodic line with notes and accidentals. The fourth staff has a treble clef and contains a series of notes with accidentals, some of which are crossed out with heavy scribbles. The fifth staff is empty.

Handwritten musical score system 2. It features five staves. The top staff has a treble clef and contains a few notes. The second staff contains a melodic line with notes and accidentals. The third staff has a treble clef and contains a series of notes with accidentals, some of which are crossed out with heavy scribbles. The fourth and fifth staves are empty.

(frei) (viel Vibr.) (mit mit Kopf der Flöte)

ppp  
muu  
Lunga

p  
muu  
Lunga  
S  
E  
R  
P  
A  
C  
S  
E

# Teil 4

T  
 O (Montage)  
 N  
 B mit  $9\frac{1}{2}$  Geschwindigkeit  
 A Aufnahme (Ticken einer Uhr)  
 N oder abgespielt mit  $4\frac{7}{8}$  oder  $2\frac{7}{8}$  Geschwindigkeit

dazu einen Cluster = (ohne Cluster)  
 dann (wieder mit) u.s.w.

2

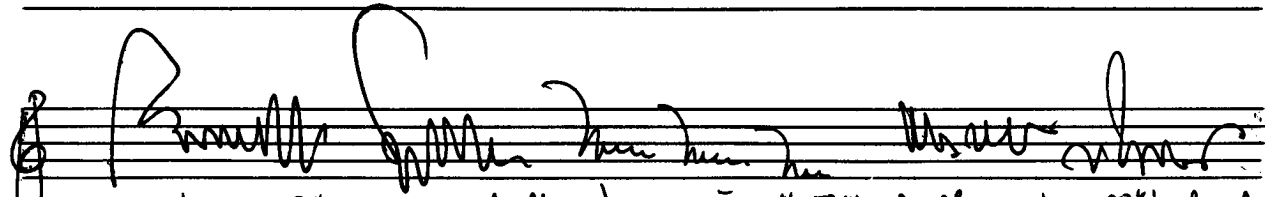
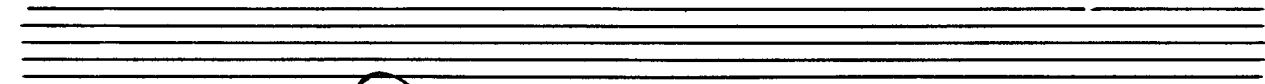
frei (auch dynamisch) | Teil 4 kann bis  ad lib. ausgedehnt werden

pp *... [musical notation]*

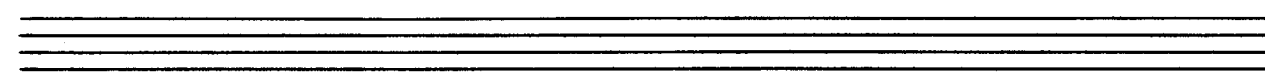
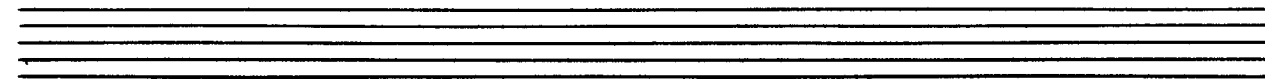
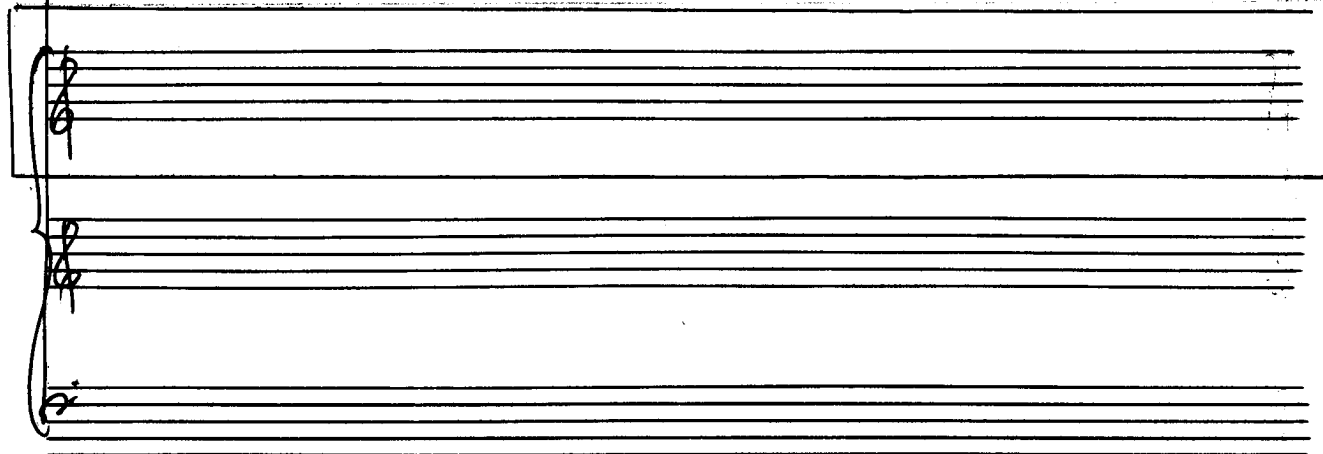
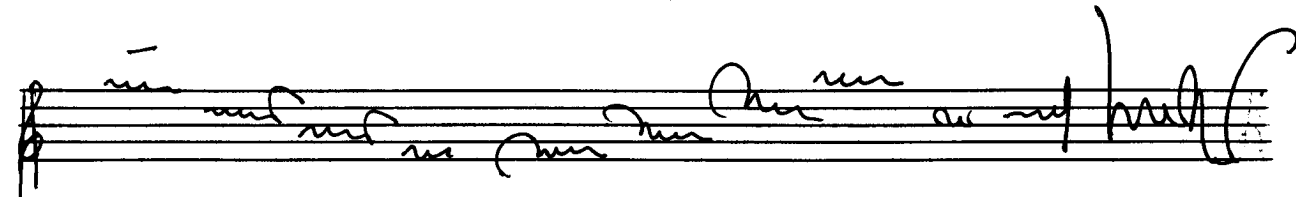
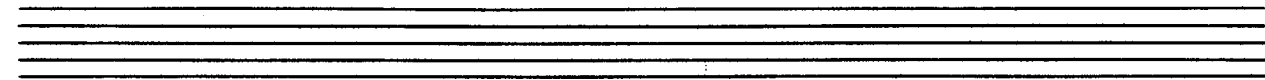
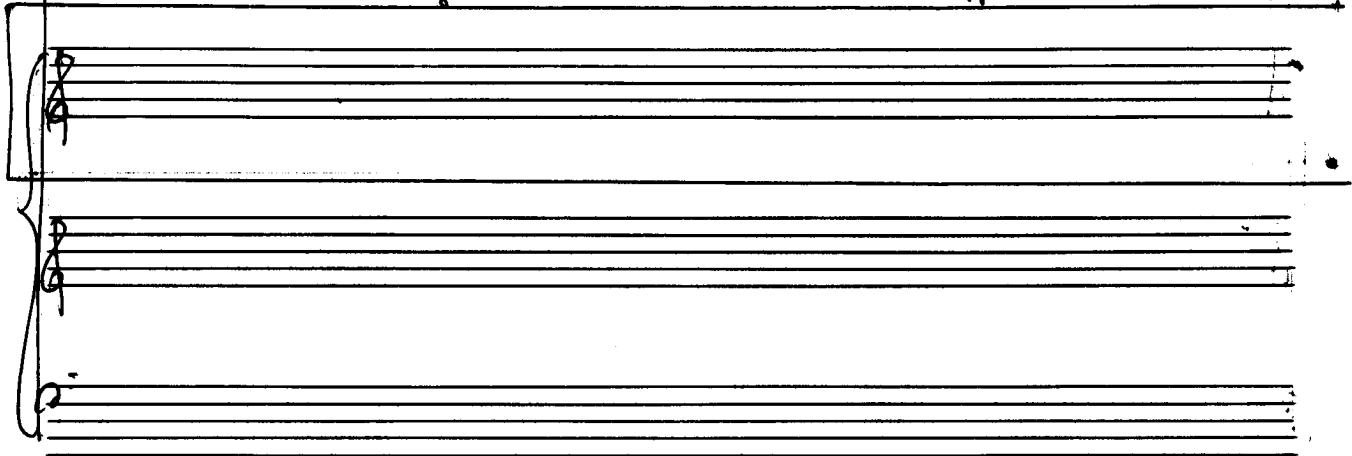
Handwritten musical notation on a treble clef staff, including a key signature of one flat and a 2/4 time signature. The notes are written in a cursive, handwritten style. Below the treble staff is a grand staff consisting of three empty staves (treble, middle, and bass clefs).

Handwritten musical notation on a treble clef staff, including a key signature of one flat and a 2/4 time signature. The notes are written in a cursive, handwritten style. Below the treble staff is a grand staff consisting of three empty staves (treble, middle, and bass clefs).

(folist kann auch wechseln) Kopf (Holz) einer alten Flöte (Flauto traverso) auf



moderne Flöte ausgewechselt - ) - nur mit Flötenkopf - ohne Flötenkopf -





Normalflöte

pp

(Flöte verklingen)

(ad. 210 (wie oft))

ppp

mit Figur

5  
S  
E  
K.  
P  
R  
O  
S  
E

Tonband auslaufen lassen

# Teil 5

Handwritten musical score for Part 5, measures 1-4. The score is for a string quartet (Violin I, Violin II, Viola, Cello/Double Bass). It features a 'Live' section with a 10-second duration. The dynamics are marked 'ffff' (fortississimo) for all parts. The word 'Cluster' is written in the Viola part. There are handwritten annotations above the staves, including a circled 'P' and a circled 'C'.

Handwritten musical score for Part 5, measures 5-8. The score is for a string quartet (Violin I, Violin II, Viola, Cello/Double Bass). It features two 5-second durations. The first duration is marked with a trapezoidal shape, and the second is marked with a rectangular shape. There are handwritten annotations above the staves, including a circled 'P' and a circled 'C'.

sehr schnell Prestissimo

Flatterz.

Cluster

Block A

Block A

Block A

Block A

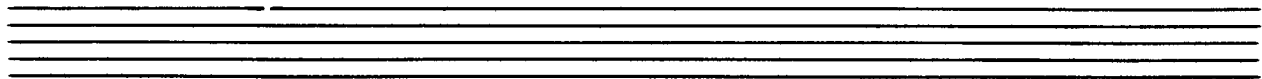
(Tonband dazu) (Tonband besteht aus: 1. Rhythmus - mechanisch)

3.

Block A

Block A

3



*frei* *erregt*

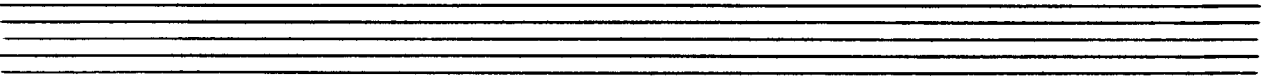
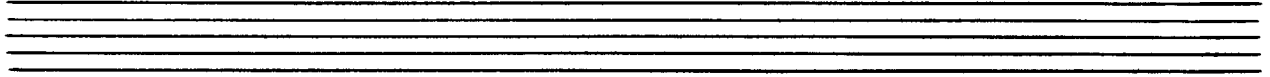
Handwritten musical score for the first system. The top staff is for the flute, marked *frei* and *erregt*. It contains several slurs and ornaments. The piano accompaniment consists of four staves. The first two staves show chords and a melodic line, while the last two staves are mostly empty with some markings.

A set of empty musical staves, likely a placeholder for a second system of music.

Handwritten musical score for the second system. The top staff is for the flute, which is mostly empty with some markings. The piano accompaniment consists of four staves. The first two staves show chords and a melodic line, while the last two staves are mostly empty with some markings.

Handwritten musical score for the first system. It features a flute part on the top staff and a piano accompaniment on the bottom staves. The flute part includes dynamic markings such as *ff* and *Fallos.*, and various articulations like slurs and accents. The piano part consists of chords and some melodic fragments, with a prominent *ff* marking at the beginning.

Handwritten musical score for the second system, continuing the piece. It shows the flute and piano parts with various chordal structures and melodic lines. The notation includes notes, rests, and dynamic markings, all written in a handwritten style.





Handwritten musical score for piano and flute. The piano part is on the left, and the flute part is on the right. The piano part features a melodic line with a slur and a fermata, and a chordal accompaniment. The flute part has a long note with a slur and a fermata. There are some handwritten annotations and a small box in the piano part.

Handwritten musical score for piano and flute. The piano part is on the left, and the flute part is on the right. The piano part has a long note with a slur and a fermata, and a chordal accompaniment. The flute part has a long note with a slur and a fermata. There are some handwritten annotations and a small box in the piano part.

Bei sehr langs.

15 - 20 Sek.

2te Hand

Handwritten musical score for flute and piano. The top staff is for the flute, featuring a melodic line with various ornaments and slurs. The piano accompaniment consists of three staves with block chords and some melodic fragments. The score is marked with dynamic levels such as *ppp* and *pp*.

Block [B]

Handwritten musical score for piano, showing three measures of music. Each measure is marked with the text "Block [B]" and is bracketed together. The score is written on a grand staff with a grid-like structure.

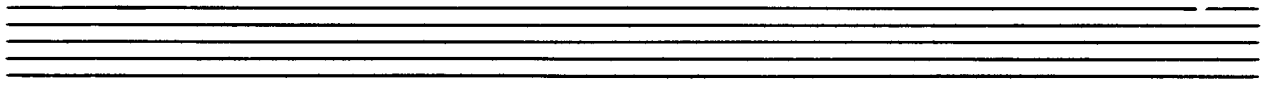
Handwritten musical score for three staves. The top staff has a treble clef and a key signature of one sharp (F#). The middle and bottom staves have bass clefs. The music consists of several measures with notes, rests, and dynamic markings like 'pp' and 'ppp'. There are also some handwritten annotations like '3/4' and '3/4' with a squiggle below them.

Handwritten musical score for three staves showing a dynamic crescendo. A box labeled 'ppp' is on the left with an arrow pointing to the start of the music. A diagonal line rises from the bottom left to the top right across the staves, with the text '20 sek.' written above it. The music ends with a double bar line and a 'fff' dynamic marking on the right.

so rasch und erregt wie möglich (4x ||:||)

Handwritten musical score for the first system. It consists of three staves: a single treble clef staff at the top, and a grand staff (treble and bass clefs) below. The piano part (grand staff) features a complex, rhythmic accompaniment with many beamed notes and rests. The violin part (single staff) has a melodic line with various ornaments and slurs. A rehearsal mark is present: **30- 40 Sept :||**. The key signature is one sharp (F#).

Handwritten musical score for the second system. It consists of three staves: a single treble clef staff at the top, and a grand staff (treble and bass clefs) below. The piano part (grand staff) continues with complex rhythmic patterns. The violin part (single staff) features a melodic line with a prominent trill-like figure and a section labeled **Gliss** (glissando). A rehearsal mark is present at the end of the system. The key signature is one sharp (F#).



Handwritten musical notation on four staves. Each staff begins with a treble clef and a single note, likely a G, marked with a dynamic marking 'p'.

Tonband von

größter Lautstärke immer mehr ausbleichen (bis ppppp)  
 20 - 30 Sek. verklängen lassen )



Handwritten musical notation on four staves. Each staff begins with a treble clef and a single note, likely a G, marked with a dynamic marking 'p'. A large diagonal line is drawn across the bottom of the staves, indicating a dynamic change or performance instruction.

längere  
 G.P.  
 Längere  
 G.P.  
 ↓

ppppp

Teil 6 und Teil 7

(♩) oder (♩)

(♩)

(8 sek.)

ppp (Vibrato)

(♩)

(10 sek.)

(lang frei)

pp

ppp

(A)

fpp > pp

Tonband 2 (deutlich) aber ohne (cluster)

ppp

fp

f

ppp

Handwritten musical score for the first system. The top staff is a flute part with a complex melodic line, including a trill marked with '7777'. The bottom two staves are a piano accompaniment. The piano part includes dynamic markings: *ppp*, *pp*, *fff*, and *pppp*. A section of the piano part is marked 'vibrato' and is enclosed in a large triangle that tapers to the right.

Handwritten musical score for the second system. The top staff continues the flute part with various dynamic markings: *ppp*, *f*, *fff*, *pp*, *pp*, *fff*, and *pp*. The bottom two staves are a piano accompaniment. A large triangle is drawn in the piano part, starting from the middle of the system and tapering to the right.



Handwritten musical score for the first system. The top staff is for the flute, showing a long melodic line with various accidentals (sharps, flats, naturals) and a dynamic marking of *ppp*. The piano accompaniment is written in the lower staves, with a circled *f* marking and a *ppp* marking. A large slur covers the entire system.

Handwritten musical score for the second system. The top staff is for the flute, featuring tremolos and dynamic markings including *fppp*, *ppp*, and *pppp*. The piano accompaniment is in the lower staves, with a circled *fppp* marking. A large slur covers the system. On the right side, there are vertical markings: *F*, *A*, *N*. Below the piano part, there is a bracketed instruction: "5 Sek - 10) oder )  
15 Sek - 20". At the bottom of the system, there is a handwritten note: "Tonband [2] vollständig nachhören lassen".