

KONZERT FÜR FLÖTE  
in 7 Teilen

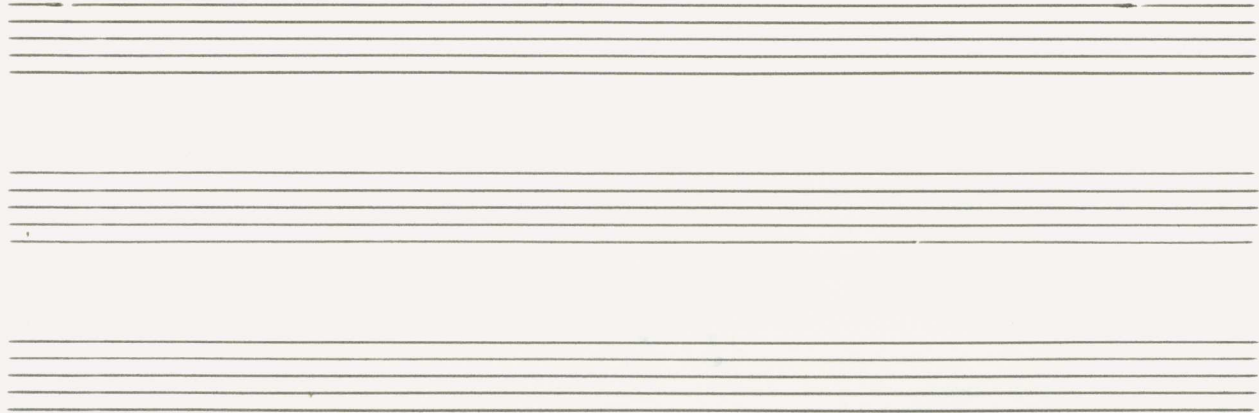
1976

Adolf Scherbaum

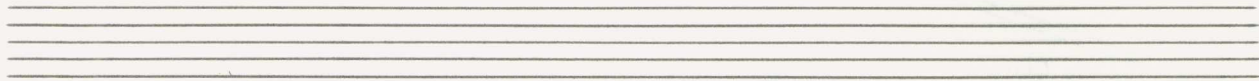
Notenheft







Hauptreihe:

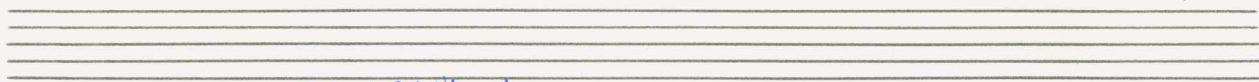


Flöte Live (Tonband)

Elektronenorgel Live + (Tonband)

Tonbandmontagen

mehrere große Lautsprecher (die auf der Bühne und im  
Saal verteilt aufgestellt  
werden)



= viel Vibrato

= dichter Triller

= Cluster (enge Tonwaben / lauter kleine Sec. und ev. Sec.)

= bedeutet von der Hauptnote im letzten Moment ein glissando (oder statt gliss.) nächster Tonfolgen (die auf einem Blasinstrument möglich sind - verboten natürlich Tonleitern der alten Harmonielehre.)

= Flatterzunge

= bedeutet freie Improvisationen des jeweiligen Solisten.  
(wenn möglich nach der Hauptreihe)

# Teil 1

Flöte

Elektronen- Orgel

15 Sek.

Cluster

pppp

fff

frei

fff

(flammend)



Cluster

ppp

ffff

10 Sek.

frei

fff



Lento (

VIBRATO

ppp

pp

f

ff

pp

f



Handwritten musical score for the first system. The top staff is in treble clef with a key signature of one sharp (F#). It begins with a dynamic marking of *pp* and a fermata. A bracket above the staff indicates a duration of 8 measures. The notation consists of a series of notes followed by a series of slanted lines representing a tremolo. Above the slanted lines, the word "accel." is written with an arrow pointing to the right. Below the slanted lines, the numbers 1 through 9 are written, with a horizontal line underneath them. The number 7 is written below the 8th measure, and the number 9 is written below the 9th measure. The bottom two staves show a tremolo pattern that gradually increases in amplitude.

Handwritten musical score for the second system. The top staff is in treble clef with a key signature of one sharp (F#). It begins with a dynamic marking of *pp* and a fermata. The notation includes notes with slurs and accents, and a dynamic marking of *pp* with an arrow pointing left. Above the first two measures, the words "(hohl)" and "(viel Vibrato)" are written. The bottom two staves show a tremolo pattern that gradually increases in amplitude. To the right of the system, the text "5 Sek." and "PAUSE" is written vertically. Below the bottom staff, the text "Lange halten" and "ppp" is written.



# Teil 2

(a)

ppp (vibrato)

(8 Sek.)

(8 Sek.)



(frei) (A/B)

*rubato*

5 Sec.

pp < # p < ff < ppp < ff > pp

*rubato*

5 Sec.

pp < b p < ff < ppp < ff > pp

5 Sek.  
P  
A  
U  
S  
E

# Teil 3

(A) (Live) *lento*

TONBAND 1

TONBAND 1



viel VIBR.

Handwritten musical score for the first system. The top staff is in treble clef and contains a melodic line with notes, slurs, and dynamic markings: *pp*, *fp*, and *ffp*. Above the notes are accents (^) and a wavy line indicating vibrato. The second staff contains a sequence of notes with accidentals: #, #, ♭, ♭, ♭, ♭. The third and fourth staves show notes with slurs and accidentals (♭, ♭, ♭, ♭).

Handwritten musical score for the second system. The top staff continues the melodic line with notes, slurs, and dynamic markings: *mf*, *ffp*, and *ffp*. Above the notes are accents (^) and a wavy line indicating vibrato. The second staff contains a sequence of notes with accidentals: #, #, ♭, ♭, ♭, ♭. The third and fourth staves show notes with slurs and accidentals (♭, ♭, ♭, ♭).

Handwritten musical score for the first system. The top staff is for the flute, showing a melodic line with dynamics *pp*, *f*, and *pp*. It includes a circled *f* and a circled *#*. The middle staff is for the bassoon, with notes and accidentals. The bottom staff is for the double bass, with a sustained note marked *#*.

Handwritten musical score for the second system. The top staff continues the flute part with dynamics *pp*, *f*, and *mf*. It includes a circled *f* and a circled *#*. The middle staff continues the bassoon part. The bottom staff continues the double bass part with a sustained note marked *#*.



Handwritten musical score for the first system. The top staff shows a flute part with a melodic line and a dynamic marking of  $pp$ . The piano accompaniment consists of a right-hand part with a sequence of notes:  $b$ ,  $b$ ,  $b$ ,  $b$ ,  $\sharp$ ,  $\sharp$ , and a left-hand part with a sequence of notes:  $\sharp$ ,  $\sharp$ ,  $\sharp$ ,  $\sharp$ ,  $\sharp$ ,  $\sharp$ . The system is marked with a  $4/4$  time signature and includes various musical notations such as slurs and dynamic markings.

Handwritten musical score for the second system. The flute part continues with a melodic line. The piano accompaniment continues with the same sequence of notes in the right hand and the same sequence of notes in the left hand. The system is marked with a  $4/4$  time signature and includes various musical notations such as slurs and dynamic markings.

(frei) (viel Vibr.) (mit mit Kopf der Flöte)

ppp

Lunga

Lunga

Lunga

S  
E  
F  
P  
A  
C  
S  
H



# Teil 4

T  
 O  
 N  
 B mit  $9\frac{1}{2}$  Geschwindigkeit  
 A Aufnahme (Ticken einer Uhr)  
 N oder abgespielt mit  $4\frac{7}{8}$  oder  $2\frac{1}{4}$  Geschwindigkeit  
 P dazu einen Cluster - (dann ohne Cluster)  
 (wieder mit) u.s.w.

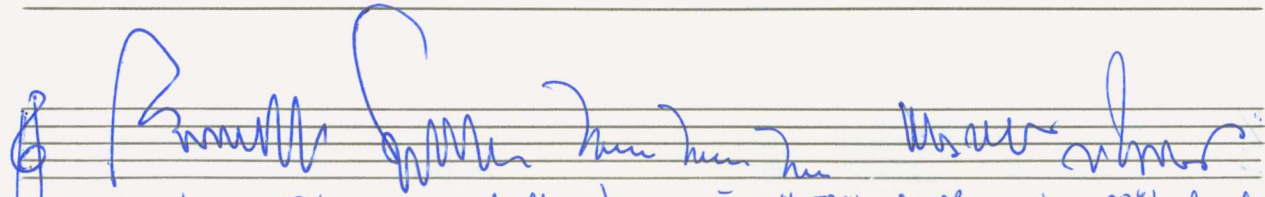
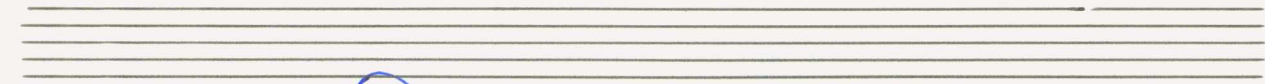
2

ganz frei (auch dynamisch) | Teil 4 kann bis  $\square$  ad.lib. ausgedehnt werden

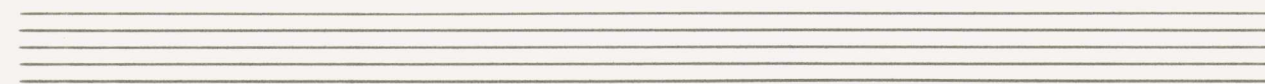
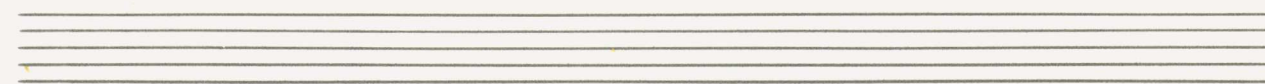
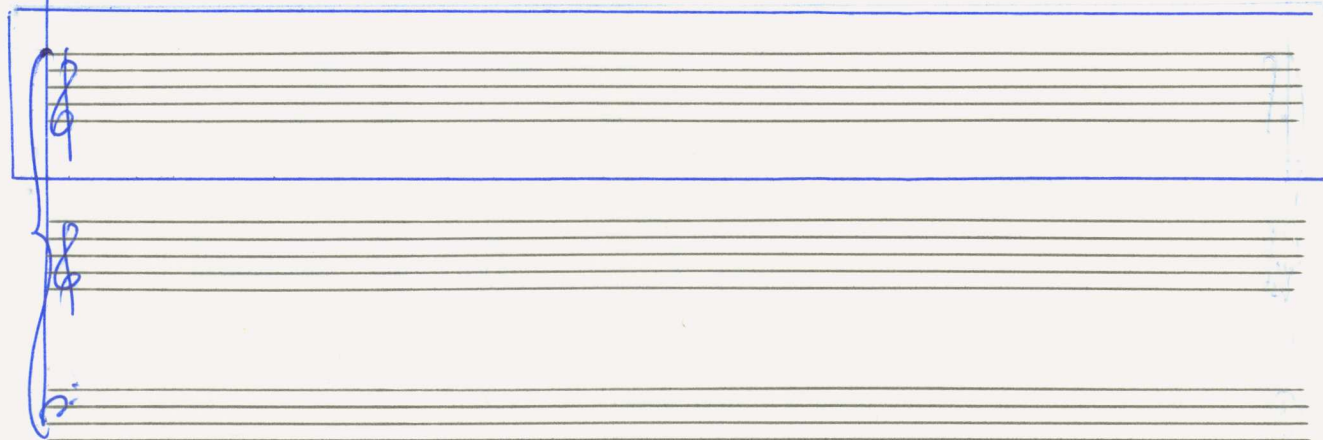
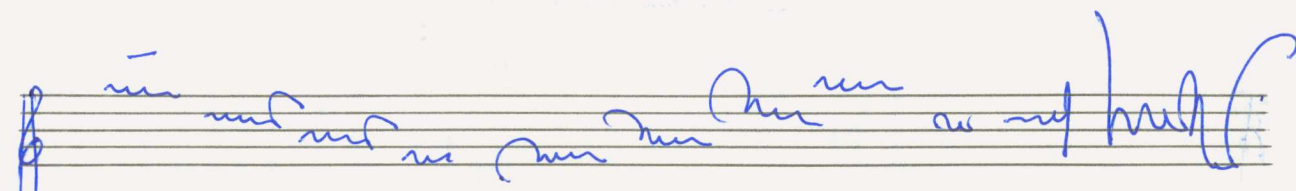
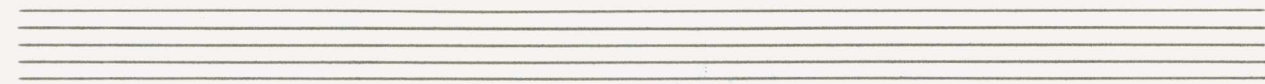
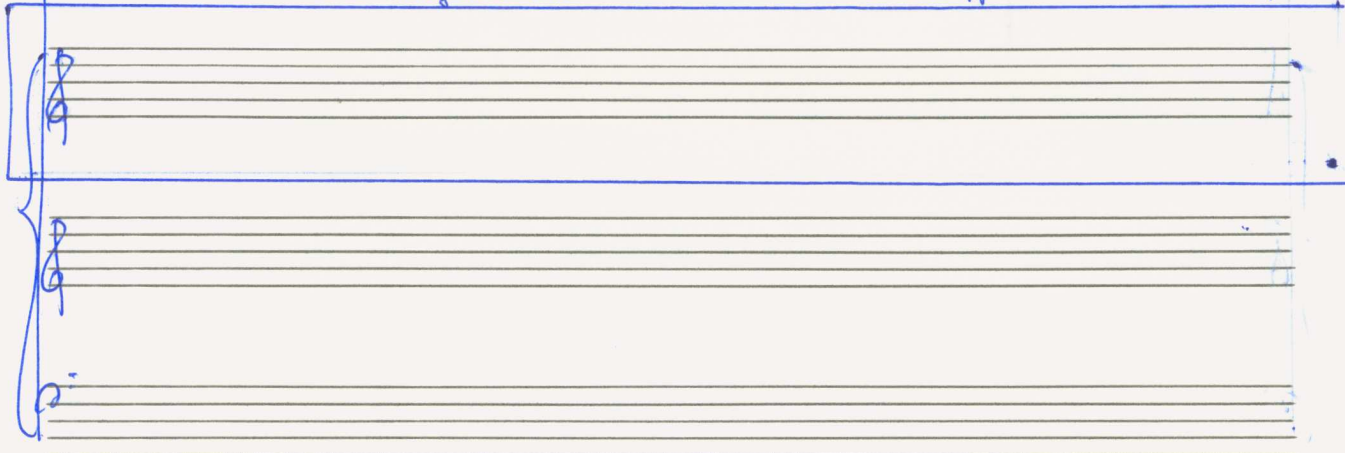
pp *... [handwritten musical notation]*

(Flötist kann auch wechseln) Kopf (Holz) einer alten Flöte (Flauto traverso) auf





moderne Flöte ausgetauscht - ) - mit mit Flötenkopf - ohne Flötenkopf -



Normalflöte

(Flöte verklingen)

mit Figur

5  
S  
E  
K.  
P  
A  
U  
S  
E

(Tonband auslaufen lassen)



# Teil 5

ff

live

ffff

ffff

ffff

(10 Sek.)

Cluster

ff

ff

ff

ff

(5 Sek.)

(5 Sek.)

sehr weit Prestissimo

Flattenz.

Cluster

Block A

Block A

Block A

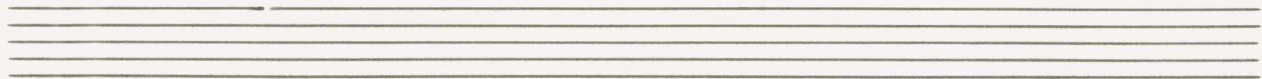


Block A

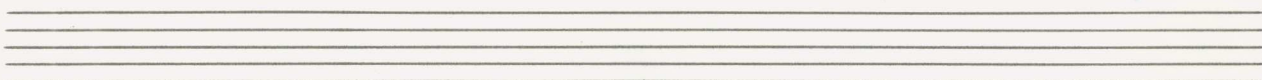
(Tonband dazu) (Tonband besteht aus: 1. Rhythmus - monoton  
2.  
3

Block A

Block A



Handwritten musical score for the first system. It features a treble clef staff with a whole rest, and a grand staff (piano) with notes 5 and 8 in the first measure, 4 and 8 in the second, 6 and 8 in the third, 5 and 8 in the fourth, 4 and 8 in the fifth, and 6 and 8 in the sixth. A diagonal line connects the bottom of the piano staff to the top of the treble staff. The system ends with a double bar line.



Handwritten musical score for the second system. It features a treble clef staff with a whole rest, and a grand staff (piano) with notes 5 and 8 in the first measure, 4 and 8 in the second, 6 and 8 in the third, 5 and 8 in the fourth, 4 and 8 in the fifth, 6 and 8 in the sixth, 5 and 8 in the seventh, 4 and 8 in the eighth, and 6 and 8 in the ninth. The system ends with a double bar line.



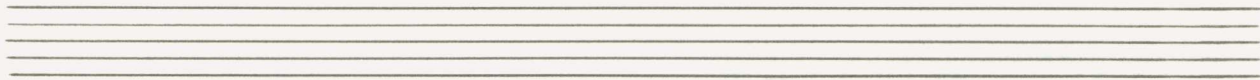
Handwritten musical score for flute and piano. The score is written in blue ink on a five-line staff. The top staff is for the flute, and the bottom staff is for the piano. The tempo marking "frei (erweit)" is written at the top left. The score includes various musical notations such as slurs, accents, and dynamic markings. The piano part features a series of chords and a long, sustained note. The flute part includes a complex melodic line with many notes and slurs.

Handwritten musical score for flute and piano. The score is written in blue ink on a five-line staff. The top staff is for the flute, and the bottom staff is for the piano. The score includes various musical notations such as slurs, accents, and dynamic markings. The piano part features a series of chords and a long, sustained note. The flute part includes a complex melodic line with many notes and slurs.

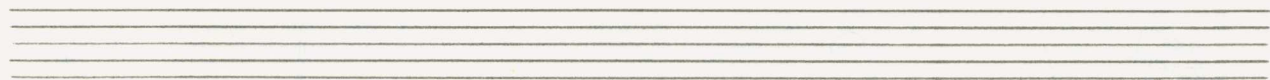
Handwritten musical score for the first system, featuring a flute part and a piano accompaniment. The flute part includes dynamic markings such as *ff* and *erregt*, and technical instructions like *Falterz.* (Flutterz.). The piano part consists of chords and rhythmic patterns, with some notes enclosed in dashed boxes.

Handwritten musical score for the second system, continuing the flute and piano parts. The flute part features various chordal textures and melodic lines, while the piano part provides harmonic support with chords and rhythmic accompaniment.





Handwritten musical score for the first system. It consists of a treble clef staff and a bass clef staff. The treble staff begins with a whole rest, followed by a melodic line in the second measure with notes G4, A4, B4, C5, B4, A4, G4, and a half note F4. The bass staff begins with a whole rest, followed by a melodic line in the second measure with notes G3, A3, B3, C4, B3, A3, G3, and a half note F3. The system concludes with a final measure containing a whole rest in both staves.



Handwritten musical score for the second system. It consists of a treble clef staff and a bass clef staff. The treble staff starts with a whole rest, followed by a melodic line in the second measure with notes G4, A4, B4, C5, B4, A4, G4, and a half note F4. The bass staff starts with a whole rest, followed by a melodic line in the second measure with notes G3, A3, B3, C4, B3, A3, G3, and a half note F3. The system concludes with a final measure containing a whole rest in both staves.

Handwritten musical score for the first system. The top staff is for the flute, showing a melodic line with a slur and a fermata. The piano accompaniment consists of two staves with chords and rhythmic markings, including a '7' with a vertical bar and a colon, and a '9' with a vertical bar and a colon. The system is enclosed in a large blue bracket on the left.

Handwritten musical score for the second system. The top staff is for the flute, featuring a complex melodic line with slurs and a fermata. The piano accompaniment consists of two staves with simple chords. Performance instructions include "(frei)" and "sehr energ." above the flute staff, and "15-20 Sek." below it. A decorative flourish is on the right side. At the bottom right, there is a box containing a note with the instruction "2te Hand" and an arrow pointing to it.



Handwritten musical score for the first system. The top staff is for the flute, containing several measures of music with various markings including slurs, accents, and dynamic markings like  $ppp$ . Below the flute staff are three staves for piano accompaniment, with dynamic markings  $ppp$ ,  $ppp$ , and  $ppp$  respectively. The piano part consists of vertical lines and horizontal bars indicating chordal structures.

A single staff with a large bracket underneath it, labeled "Block B".

A multi-staff musical score consisting of three measures. Each measure is labeled "Block B" and contains vertical lines and horizontal bars, representing a rhythmic or structural pattern. The staves are grouped together with a brace on the left.

Handwritten musical score for three staves. The top staff has a treble clef and contains notes with accidentals and slurs. The middle staff has a treble clef and contains notes with slurs and some handwritten markings like '33' and '40'. The bottom staff has a bass clef and contains notes with slurs. The score is divided into measures by vertical lines.

Handwritten musical score for three staves showing a dynamic change. A box labeled 'ppp' is connected by a line to a '20 sek.' label. The score ends with a double bar line and a repeat sign. There are handwritten 'fff' markings on the right side of the staves.

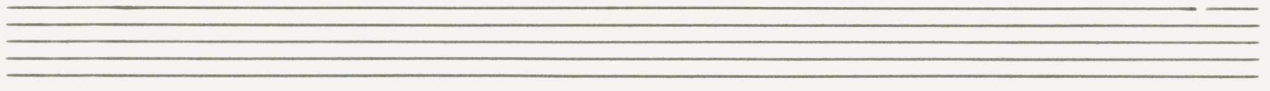


so rasch und bewegt wie möglich (4 x ||:||)

Handwritten musical score for the first system. The top staff is for the flute, containing several measures with various ornaments and slurs. The piano accompaniment consists of three staves. The right hand part features a series of rectangular boxes, likely representing chords or specific fingerings. A tempo marking "30-40 Sek" is present.

Empty musical staff with a treble clef and a key signature of three sharps (F#, C#, G#).

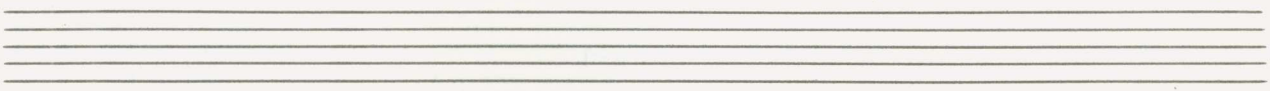
Handwritten musical score for the second system. The top staff is for the flute, containing several measures with various ornaments and slurs. The piano accompaniment consists of three staves. A prominent "gliss" (glissando) marking is visible in the middle of the piano part. The system concludes with a double bar line.



Handwritten musical notation for four staves, each containing a single note labeled 'G1'.

Tonband von

größter Lautstärke immer mehr ausbleichen (bis ppppp)  
 20 - 30 Sek. (verklungen lassen)



Handwritten musical notation for four staves, each containing a single note labeled 'G1'. A vertical line on the right side is labeled 'Kassete' and 'G.P.'. Below it, the text 'Längere G.P.' is written with a downward arrow. At the bottom, a diagonal line indicates a dynamic change, labeled 'ppppp'.



Teil 6 und Teil 7

(♩) oder (♩)

PPP (Vibrato)

(8 sek.)

(10 sek.)

p

(gang frei)

Tonband 2 (deutlich) aber ohne Cluster

ppp



Handwritten musical score for the first system. The top staff is for the flute, and the bottom two staves are for the piano. The flute part begins with a *ppp* dynamic and includes notes with accidentals (sharps and flats), slurs, and accents. A *fff* dynamic is marked below the first few notes. The piano accompaniment features a *ppp* dynamic and a section labeled "vibrato" with a triangular dynamic shape that tapers from *ppp* to *pppp*.

Handwritten musical score for the second system. The flute part continues with notes, slurs, and accents, including dynamics such as *ppp*, *f*, *fff*, and *pp*. The piano accompaniment includes a triangular dynamic shape that tapers from *ppp* to *pp*.

