

L. V. BEETHOVEN



W. A. MOZART



NOTENHEFT

F. SCHUBERT



J. HAYDN



J. STRAUSS



FORNET

4 Nutzen

für Klavier (Solo)

(ad. lib.) Schlagwerk (dazu)

1876

Adolf Scherbaum

Test 1

Seveso wird nun entgiftet

Milano - Nach fünf Jahren Überlegungen hat die Regierung der italienischen Provinz Lombardei einen Plan zur Entgiftung des Industriekomplexes Seveso vorgelegt. Das verunreinigte Material soll durch ein Gemisch aus Wasser und Soda verbrannt werden. Die Giftgaswolke, die sich im Juli 1976 gebildet hat,

erste (1) (aber nicht schlüssig)

Handwritten musical notation for the first system, consisting of two staves. The upper staff contains a sequence of four chords with upward-pointing accents above them. The lower staff contains a sequence of three chords, with a final upward-pointing accent above the last one.

Handwritten musical notation for the second system, consisting of two staves. The upper staff contains a sequence of four chords with upward-pointing accents above them. The lower staff contains a sequence of three chords, with upward-pointing accents above the first two.

Handwritten musical notation for the third system, consisting of two staves. The upper staff contains a sequence of four chords with upward-pointing accents above them. The lower staff contains a sequence of three chords, with upward-pointing accents above the first two.

Handwritten musical notation for the fourth system, consisting of two staves. The upper staff contains a sequence of four chords with upward-pointing accents above them. The lower staff contains a sequence of three chords, with upward-pointing accents above the first two. At the bottom left, there is a key signature of two sharps (F# and C#) and a common time signature (C). At the bottom right, there is a key signature of two sharps (F# and C#) and a common time signature (C).

Handwritten musical notation for the first system. The top staff is in treble clef and contains a melodic line with four notes: B \flat , A, G, F, each with an accent (^). The bottom staff is in bass clef and contains a chord progression: B \flat major (B \flat , D \flat , F), G major (G, B, D), and F major (F, A, C), with a fermata over the final chord.

Handwritten musical notation for the second system. The top staff is in treble clef and contains a melodic line with four notes: G, F, E, D, each with an accent (^). The bottom staff is in bass clef and contains a chord progression: G major (G, B, D), F major (F, A, C), and E major (E, G, B), with a fermata over the final chord.

Handwritten musical notation for the third system. The top staff is in treble clef and contains a melodic line with four notes: D, C, B, A, each with an accent (^). The bottom staff is in bass clef and contains a chord progression: D major (D, F, A), C major (C, E, G), and B major (B, D, F), with a fermata over the final chord.

Handwritten musical notation for the fourth system. The top staff is in treble clef and contains a melodic line with four notes: G, F, E, D, each with an accent (^). The bottom staff is in bass clef and contains a chord progression: G major (G, B, D), F major (F, A, C), and E major (E, G, B), with a fermata over the final chord. A circled number '10' and the number '58' are written at the end of the system.

Handwritten musical notation on a five-line staff. The top staff contains a melodic line with notes and rests. The bottom staff contains a bass line with notes and rests. There are two measures shown, with a bracket spanning across them. The notation includes various accidentals and dynamic markings.

Handwritten musical notation on a five-line staff. Similar to the first system, it shows a melodic line and a bass line. The notation includes various accidentals and dynamic markings.

dim

Handwritten musical notation on a five-line staff. The top staff contains a melodic line with notes and rests. The bottom staff contains a bass line with notes and rests. There are two measures shown, with a bracket spanning across them. The notation includes various accidentals and dynamic markings.

Handwritten musical notation on a five-line staff. The top staff contains a melodic line with notes and rests. The bottom staff contains a bass line with notes and rests. There are two measures shown, with a bracket spanning across them. The notation includes various accidentals and dynamic markings.

rit. rit.

Handwritten musical notation for the first system. It features a treble clef with a circled 'p' and a bass clef. The treble staff contains notes with slurs and accents, and a circled 'p' below it. The bass staff contains notes with slurs and accents. The system is divided into three measures.

Handwritten musical notation for the second system. It features a treble clef with a circled 'pp' and a bass clef. Above the treble staff is the instruction '(Ped.)' with a horizontal line. The treble staff contains notes with slurs and accents. The bass staff contains notes with slurs and accents. The system is divided into three measures. To the right of the system is a vertical staff with notes and a circled 'aus' below it.

Handwritten musical notation for the third system. It features a treble clef with a circled 'ppp' and a bass clef. Above the treble staff is the instruction 'lento (♩)' and a box containing the text 'sehr langsam'. The treble staff contains notes with slurs and accents. The bass staff contains notes with slurs and accents. The system is divided into three measures.

Handwritten musical notation for the fourth system. It features a treble clef with a circled 'pp' and a bass clef. The treble staff contains notes with slurs and accents. The bass staff contains notes with slurs and accents. The system is divided into three measures.

Handwritten musical notation for the first system. It features a treble clef, a key signature of one sharp (F#), and a 9/8 time signature. The notation includes a circled 'p' in the first measure and a circled 'mit' in the third measure. The piece concludes with a double bar line.

so ruhig wie möglich

Handwritten musical notation for the second system. It includes a piano (*ppp*) dynamic marking and a 'Ped.' (pedal) instruction. The notation shows a treble clef and a 9/8 time signature.

Handwritten musical notation for the third system. It includes a 'Ped.' (pedal) instruction and a 'aus' (release) instruction. The notation shows a treble clef and a 9/8 time signature.

Handwritten musical notation for the fourth system. It includes a circled 'mit', a piano (*ppp*) dynamic marking, and a 'Ped.' (pedal) instruction. The notation shows a treble clef and a 9/8 time signature.

Presto (ppp - sempre cresc. bis **fff**)

$\frac{2}{4}$ ppp \leftarrow cresc. $b \frac{1}{4}$ $\frac{1}{4}$ $b \frac{1}{4}$ $\frac{1}{4}$
 (doppio Tremolo)

$b \frac{1}{4}$ $\frac{1}{4}$ $b \frac{1}{4}$ $\frac{1}{4}$

ppp $\frac{1}{2}$ $\frac{1}{2}$ $\frac{1}{2}$ $\frac{1}{2}$

$\frac{1}{4}$ $\frac{1}{4}$ $\frac{1}{4}$ $\frac{1}{4}$

Handwritten musical notation for the first system. It consists of two staves. The upper staff is in treble clef with a key signature of one sharp (F#) and a common time signature (C). It contains four measures of music with notes and rests, some grouped by brackets. The lower staff is in bass clef and contains two measures of music, each represented by a vertical line with a 'b' symbol, indicating a whole rest.

Handwritten musical notation for the second system. It consists of two staves. The upper staff is in treble clef with a key signature of one sharp (F#) and a common time signature (C). It contains four measures of music with notes and rests, some grouped by brackets. The lower staff is in bass clef and contains two measures of music, each represented by a vertical line with a 'b' symbol, indicating a whole rest.

Handwritten musical notation for the third system. It consists of two staves. The upper staff is in treble clef with a key signature of one sharp (F#) and a common time signature (C). It contains four measures of music with notes and rests, some grouped by brackets. The lower staff is in bass clef and contains two measures of music, each represented by a vertical line with a 'b' symbol, indicating a whole rest.

Handwritten musical notation for the fourth system, labeled "(harp)" on the left. It consists of two staves. The upper staff is in treble clef with a key signature of one sharp (F#) and a common time signature (C). It contains four measures of music with notes and rests, some grouped by brackets. The lower staff is in bass clef and contains four measures of music with notes and rests, some grouped by brackets.

Ped. *arco*

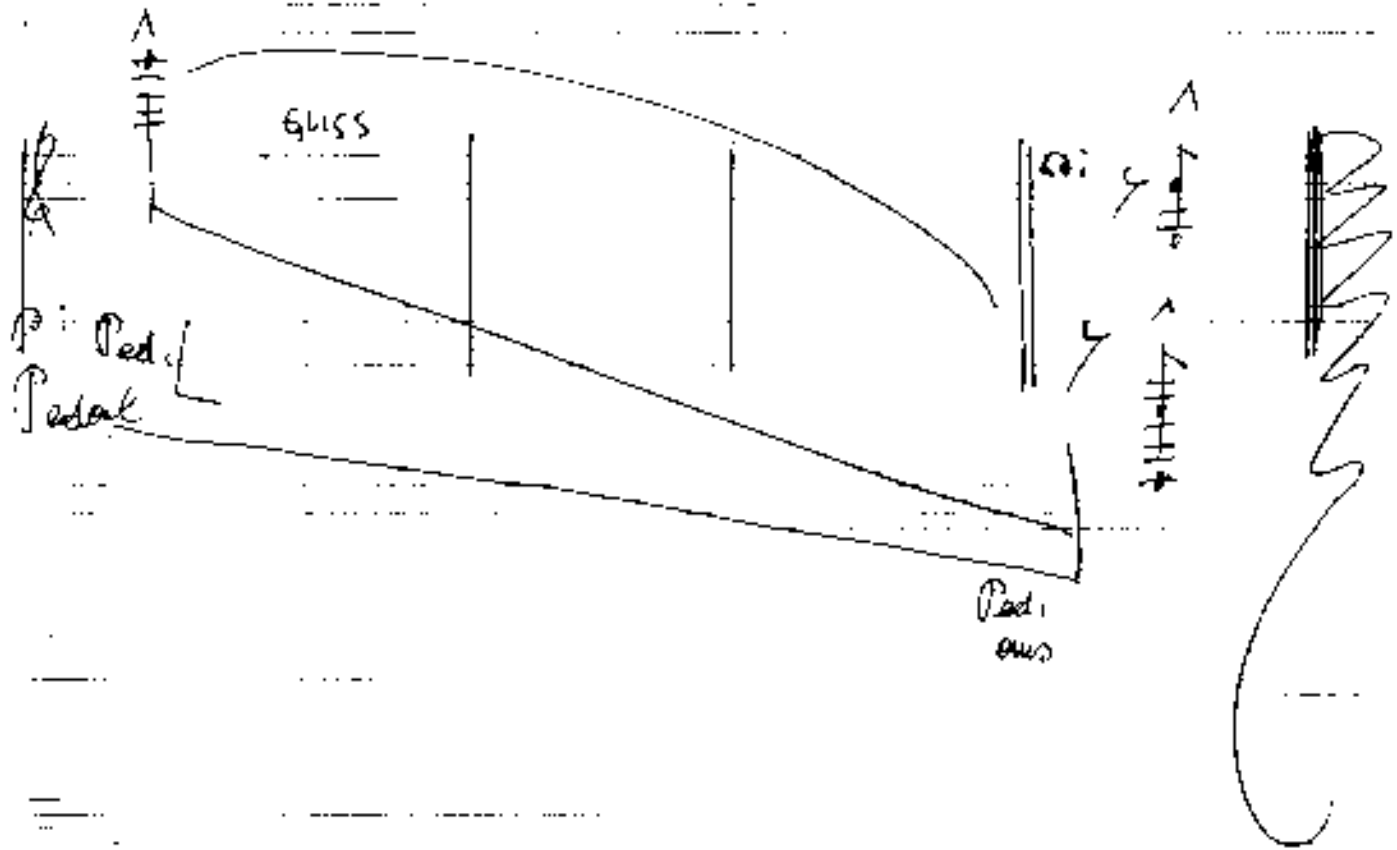
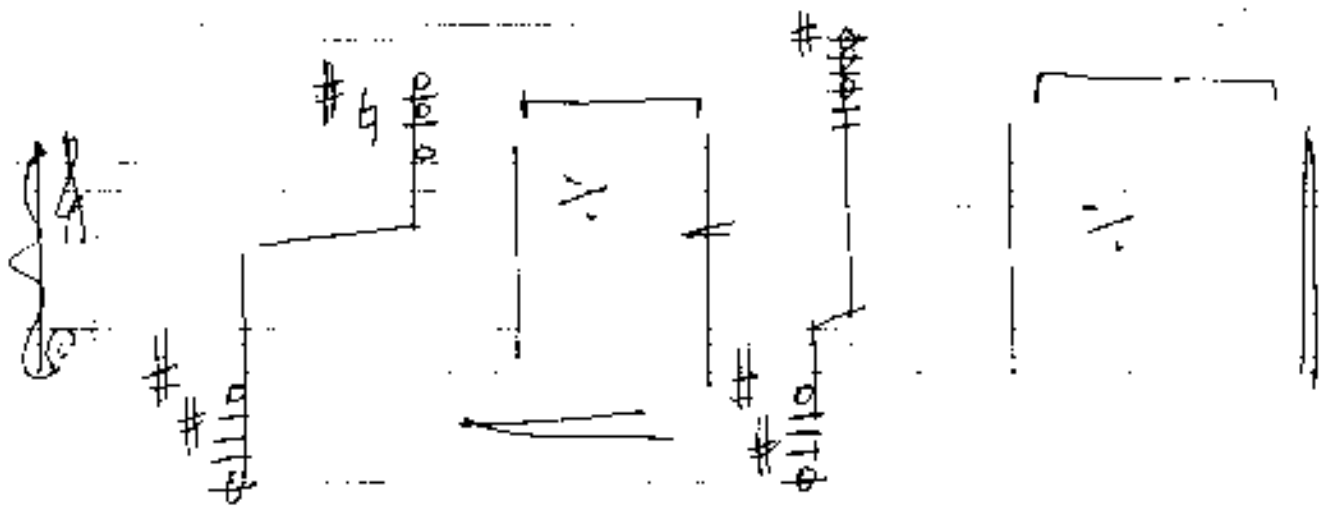
Handwritten musical notation for the first system. It features a treble clef and a circled key signature of three sharps (F#, C#, G#). The staff contains several notes with accidentals, including a double sharp (x) and various sharps and naturals. There are also some bracketed markings above the staff.

Handwritten musical notation for the second system. It features a treble clef and a staff with notes and accidentals. There are some bracketed markings above the staff, and the notation includes various sharps and naturals.

(cap 1)

Handwritten musical notation for the third system, labeled "(cap 1)". It features a treble clef and a circled key signature of three sharps (F#, C#, G#). The staff contains notes with accidentals, including a double sharp (x) and various sharps and naturals. There are also some bracketed markings above the staff.

Handwritten musical notation for the fourth system. It features a treble clef and a staff with notes and accidentals. There are some bracketed markings above the staff, and the notation includes various sharps and naturals.



2

sehr ruhig

1

Jeder 10. Politiker geht zu Callgirls

Washington. Wie bunt es Amerikas höchste Politiker in Washington treiben, hat jetzt der Psychologieprofessor Sam Janus enthüllt. Jeder zehnte von ihnen geht zwei bis dreimal pro Woche zu einem Callgirl und läßt sich dieses Vergnügen ein kleines Vermögen kosten.



Musical notation on a staff with a treble clef and a key signature of one sharp (F#). The melody consists of notes G4, A4, B4, C5, B4, A4, G4. Below the staff is a bass line with notes G2, A2, B2, C3, D3, E3, F3, G3.



Musical notation on a staff with a treble clef and a key signature of one sharp (F#). The melody consists of notes G4, A4, B4, C5, B4, A4, G4. Below the staff is a bass line with notes G2, A2, B2, C3, D3, E3, F3, G3.



Musical notation on a staff with a treble clef and a key signature of one sharp (F#). The melody consists of notes G4, A4, B4, C5, B4, A4, G4. Below the staff is a bass line with notes G2, A2, B2, C3, D3, E3, F3, G3.

Handwritten musical notation for system 1. It features a treble clef staff with a melodic line and a bass clef staff with a bass line. The key signature has one flat (B-flat). A slur covers the first two measures of the melody. The number '27' is written in the upper right. The bass line consists of quarter notes on a single staff.

Handwritten musical notation for system 2. It features a treble clef staff with a melodic line and a bass clef staff with a bass line. The key signature has two sharps (F# and C#). A slur covers the first two measures of the melody. The number '28' is written in the upper right. The bass line consists of quarter notes on a single staff.

Handwritten musical notation for system 3. It features a treble clef staff with a melodic line and a bass clef staff with a bass line. The key signature has two sharps (F# and C#). A slur covers the first two measures of the melody. The number '29' is written in the upper right. The bass line consists of quarter notes on a single staff.

Handwritten musical notation for system 4. It features a treble clef staff with a melodic line and a bass clef staff with a bass line. The key signature has one flat (B-flat). A slur covers the first two measures of the melody. The number '30' is written in the upper right. The bass line consists of quarter notes on a single staff.

Erhöhtes ist + dim

mysterioso

Handwritten musical notation for the first system. It features a treble clef with a key signature of one sharp (F#) and a common time signature. The notation includes a melodic line with a slur and a fermata, and a bass line with a '49' marking and several chords with upward-pointing accents (^).

große Steigerung - cresc + accel.

Handwritten musical notation for the second system. The treble clef has a key signature of two flats (Bb, Eb). The notation shows a melodic line with a slur and a fermata, and a bass line with chords. The text "große Steigerung - cresc + accel." is written above the first measure.

Handwritten musical notation for the third system. The treble clef has a key signature of two flats (Bb, Eb). The notation includes a melodic line with a slur and a fermata, and a bass line with chords.

quel.

Handwritten musical notation for the fourth system. The treble clef has a key signature of one sharp (F#). The notation includes a melodic line with a slur and a fermata, and a bass line with chords. The text "quel." is written above the first measure, and "ditt. Tremolo" is written below the first measure.

frei (Pentatonic oder octat.) (2-4t) (4t)

Large Cluster

pp

772
16

VOM ANFANG auf FINE.

Handwritten musical score for the first system. The treble clef staff contains a melodic line with notes G4, A4, B4, C5, B4, A4, G4, and F4, with a slur over the first four notes and an accent (^) over the fifth. The bass clef staff contains a bass line with notes G2, F2, E2, D2, C2, B1, and A1. The system is divided into three measures by vertical bar lines.

simple vers. tacet

Handwritten musical score for the second system. The treble clef staff begins with a piano (*pp*) dynamic marking. The melodic line has notes G4, A4, B4, C5, B4, A4, G4, and F4, with a slur over the first four notes and an accent (^) over the fifth. The bass clef staff contains a bass line with notes G2, F2, E2, D2, C2, B1, and A1. The system is divided into three measures.

Handwritten musical score for the third system. The treble clef staff contains a melodic line with notes G4, A4, B4, C5, B4, A4, G4, and F4, with a slur over the first four notes and an accent (^) over the fifth. The bass clef staff contains a bass line with notes G2, F2, E2, D2, C2, B1, and A1. The system is divided into three measures.

Handwritten musical score for the fourth system. The treble clef staff contains a melodic line with notes G4, A4, B4, C5, B4, A4, G4, and F4, with a slur over the first four notes and an accent (^) over the fifth. The bass clef staff contains a bass line with notes G2, F2, E2, D2, C2, B1, and A1. The system is divided into three measures.

Handwritten musical notation for the first system. The treble staff begins with a treble clef and a key signature of one sharp (F#). It contains a melodic line with a slur over the first two measures, followed by a wavy line in the third measure. The bass staff contains a bass clef and a bass line with notes and rests. A circled 'p' (piano) dynamic marking is present in the first measure of the bass staff.

Handwritten musical notation for the second system. The treble staff continues the melodic line with a slur and a wavy line. The bass staff continues the bass line with notes and rests. A circled 'p' dynamic marking is present in the first measure of the bass staff.

Handwritten musical notation for the third system. The treble staff continues the melodic line with a slur and a wavy line. The bass staff continues the bass line with notes and rests. A circled 'p' dynamic marking is present in the first measure of the bass staff.

Tango (immer wieder) und (stärker werden →)

Handwritten musical notation for the first system. The treble clef staff contains a circled 'p' dynamic marking, followed by notes with accents and slurs. The bass clef staff contains notes with flats and a slur. The system is divided into three measures by vertical bar lines.

Handwritten musical notation for the second system. The treble clef staff begins with a sharp sign and contains notes with accents and slurs. The bass clef staff contains notes with flats and a slur. The system is divided into three measures.

Handwritten musical notation for the third system. The treble clef staff starts with a wavy line, followed by notes with accents and slurs. The bass clef staff contains notes with flats and a slur. The system is divided into three measures.

Handwritten musical notation for the fourth system. The treble clef staff begins with a sharp sign and contains notes with accents and slurs. The bass clef staff contains notes with flats and a slur. The system is divided into three measures.

allargando ————— (*accel.* — *cresc.*)

Handwritten musical notation for the first system. The treble clef staff contains notes with accidentals (flats and naturals) and slurs. The bass clef staff contains notes with accidentals. A dynamic marking 'f' is present in the first measure. The system concludes with a fermata over a note in the treble staff.

Handwritten musical notation for the second system. The treble clef staff begins with a key signature change to one sharp (F#). It features a sequence of notes with slurs and a fermata. The bass clef staff contains notes with accidentals.

Handwritten musical notation for the third system. The treble clef staff has notes with slurs and a fermata. The bass clef staff contains notes with accidentals. A dynamic marking 'f' is present in the second measure.

Handwritten musical notation for the fourth system. The treble clef staff has notes with slurs and a fermata. The bass clef staff contains notes with accidentals.

Handwritten musical score for the first system, featuring a treble clef and a bass clef. The treble staff has a wavy line above it with a 'b' underneath. The music consists of two measures with various notes and rests.

Quinta

Handwritten musical score for the second system, featuring a treble clef and a bass clef. The music consists of two measures with various notes and rests.

Allegro (and. cresc.)

Handwritten musical score for the third system, featuring a treble clef and a bass clef. The music consists of two measures with various notes and rests.

Handwritten musical score for the fourth system, featuring a treble clef and a bass clef. The music consists of two measures with various notes and rests.

Handwritten musical notation for the first system. The treble staff contains notes with a wavy line above it, and the bass staff contains notes with stems. A double bar line is present.

Handwritten musical notation for the second system. The treble staff has notes with stems and a double bar line. The bass staff has notes with stems and a double bar line.

Handwritten musical notation for the third system. The treble staff has notes with stems and a double bar line. The bass staff has notes with stems and a double bar line.

Handwritten musical notation for the fourth system. The treble staff has notes with stems and a double bar line. The bass staff has notes with stems and a double bar line.

Presto

Handwritten musical notation for the first system. It features a treble clef and a piano (p) dynamic marking. The notation consists of a series of vertical stems with dots, representing notes, arranged in a rhythmic pattern across the staff.

(accel.) cresc.

Handwritten musical notation for the second system. It includes the marking "(accel.) cresc." and various musical symbols such as slurs, accents, and dynamic markings like "p". The notation shows a progression of notes with increasing intensity and speed.

Handwritten musical notation for the third system. It features a treble clef and a piano (p) dynamic marking. The notation includes a series of notes with slurs and accents, indicating a melodic line.

Handwritten musical notation for the fourth system. It features a treble clef and a piano (p) dynamic marking. The notation includes a series of notes with slurs and accents, indicating a melodic line.

Handwritten title: *Handwritten title*

Handwritten musical notation for the first system, featuring treble and bass staves with notes, rests, and circled chord symbols.

Handwritten musical notation for the second system, including treble and bass staves with notes, rests, and dynamic markings.

Handwritten musical notation for the third system, showing treble and bass staves with notes, rests, and dynamic markings.

Handwritten musical notation for the fourth system, including treble and bass staves with notes, rests, and a 'Ped.' marking.

so weit wie möglich (44)

(auf 1)

Handwritten musical notation for the first system. The treble clef is circled. The notation includes a double bar line with repeat dots, followed by a series of notes and chords. Chord symbols above the staff include b^b , a^b , e^b , b^b , e^b , and e^b . The bass staff shows corresponding chord voicings with accidentals.

Handwritten musical notation for the second system. The notation continues with notes and chords. Chord symbols above the staff include b^b , a^b , e^b , b^b , e^b , and e^b . The bass staff shows corresponding chord voicings.

Handwritten musical notation for the third system. The notation concludes with a double bar line. Chord symbols above the staff include b^b , a^b , e^b , b^b , e^b , and e^b . The bass staff shows corresponding chord voicings.

Handwritten musical notation on a grand staff. The upper staff is labeled "Perc." and contains a long, sweeping line with a bracket above it labeled "8" and "b4 to 0". The lower staff contains a series of notes with stems, some marked with "8" and "#9cc". A dynamic marking "pp" is present. A large, curved line spans across both staves, with the word "Gloss" written below it.

Handwritten musical notation on a grand staff. The upper staff is labeled "Perc." and contains a long, sweeping line with a bracket above it labeled "8". The lower staff contains a series of notes with stems, some marked with "8". A dynamic marking "pp" is present. A large, curved line spans across both staves, with the word "Gloss" written below it.

Handwritten musical notation on a grand staff. The upper staff contains notes with stems and dynamic markings "p" and "y". The lower staff contains notes with stems and dynamic markings "p" and "y". A large, scribbled-out section is present on the right side of the page.

3-jähriger starb an

Hunger

No. 11

(Musiknoten)

Leute (Mutter, Schwester)

Handwritten musical notation for the first system, including a treble clef, notes, and a bass line with chord symbols.

Handwritten musical notation for the second system, including a treble clef, notes, and a bass line with chord symbols.

Handwritten musical notation for the third system, including a treble clef, notes, and a bass line with chord symbols.

Bruder im Spital

- Gmündner Ehepaar qualte Kinder
- Fürsorgebehörden kamen zu spät

Jetzt erstattet die Gendarmerie Anzeige gegen das Ehepaar Willibald, 40, und Frieda Reiserblechler, 37, aus Gmünden: Der dreijährige Sohn Frank war an Unterernährung gestorben, sein sechsjähriger Bruder Harald wurde ebenfalls entkräftet und mißhandelt, im Linzer Kinderspital gelettet; Harald will nicht mehr heim.

Handwritten musical notation for the first system. The treble clef is on the left. A circled 'p' (piano) dynamic marking is present. The notation includes several notes with stems and beams, and rests. There are also some markings that look like 'b' and 'd'.

Handwritten musical notation for the second system. The treble clef is on the left. A circled 'p' (piano) dynamic marking is present. The notation includes several notes with stems and beams, and rests. There are also some markings that look like 'b' and 'd'.

Handwritten musical notation for the third system. The treble clef is on the left. A circled 'f' (forte) dynamic marking is present. The notation includes several notes with stems and beams, and rests. There are also some markings that look like 'b' and 'd'.

Handwritten musical notation for the fourth system. The treble clef is on the left. A circled 'f' (forte) dynamic marking is present. The notation includes several notes with stems and beams, and rests. There are also some markings that look like 'b' and 'd'.

Handwritten musical notation, first system. The top staff contains notes with accents and slurs. The bottom staff contains chords with accidentals. A circled annotation "(dim)" is present above the second measure.

Handwritten musical notation, second system. The top staff features a circled note and a circled "p" dynamic marking. The bottom staff shows complex chordal textures. A circled "p" is also present in the middle of the system.

Handwritten musical notation, third system. The top staff has notes with slurs and accents. The bottom staff contains dense chordal passages with various accidentals.

Handwritten musical notation, fourth system. The top staff includes notes with slurs and accents. The bottom staff features complex chordal structures. A circled "p" is visible at the bottom of the system.

(poco rit) Solo brief

Handwritten musical notation for the first system. The top staff is in treble clef and the bottom staff is in bass clef. The music consists of several measures with notes, rests, and dynamic markings. A circled sharp sign (#) is present in the second measure of the top staff.

Handwritten musical notation for the second system. The top staff is in treble clef and the bottom staff is in bass clef. The music continues with notes and rests.

Handwritten musical notation for the third system. The top staff is in treble clef and the bottom staff is in bass clef. A bracketed section in the bottom staff is labeled *(poco rit)*.

Handwritten musical notation for the fourth system. The top staff is in treble clef and the bottom staff is in bass clef. A circled sharp sign (#) is present in the first measure of the top staff. A bracketed section in the bottom staff is labeled *cluster*.

Graves mit

Handwritten musical score for 'Graves mit'. It consists of two staves. The upper staff is in treble clef and contains a series of notes with stems, some marked with 'p' (piano) and 'f' (forte). There are also some circled notes and a circled key signature of three sharps (F#). The lower staff is in bass clef and contains a series of notes, some marked with 'p' and 'f'. There are also some circled notes and a circled key signature of three sharps (F#).

reigere mit + dem

Handwritten musical score for 'reigere mit + dem'. It consists of two staves. The upper staff is in treble clef and contains a series of notes with stems, some marked with 'p' and 'f'. There are also some circled notes and a circled key signature of three sharps (F#). The lower staff is in bass clef and contains a series of notes, some marked with 'p' and 'f'. There are also some circled notes and a circled key signature of three sharps (F#).

von Anfang an

Handwritten musical score for 'von Anfang an'. It consists of two staves. The upper staff is in treble clef and contains a series of notes with stems, some marked with 'p' and 'f'. There are also some circled notes and a circled key signature of three sharps (F#). The lower staff is in bass clef and contains a series of notes, some marked with 'p' and 'f'. There are also some circled notes and a circled key signature of three sharps (F#).

Graves mit

Handwritten musical score for 'Graves mit'. It consists of two staves. The upper staff is in treble clef and contains a series of notes with stems, some marked with 'p' and 'f'. There are also some circled notes and a circled key signature of three sharps (F#). The lower staff is in bass clef and contains a series of notes, some marked with 'p' and 'f'. There are also some circled notes and a circled key signature of three sharps (F#).