

Ballett

1976

nach Edgar Allan Poe
(Huppfrosch)

Notenheft

(Skizzen.)



Ballett

1976

F 153 Scherbaum 1104

MUSIKSAMMLUNG
ÖSTERREICH
NATIONALBIBLIOTHEK

1

Modi (Mazurkantig)

Handwritten musical score for the first system. It consists of two staves. The upper staff is in treble clef with a 4/4 time signature. It begins with a piano (p) dynamic marking. The melody starts on a whole note G#4, followed by quarter notes A4, B4, and C5. The lower staff is in bass clef, showing a series of five lines with a sharp sign (#) above them, representing a chord. The system concludes with a double bar line.

Handwritten musical score for the second system. It consists of two staves. The upper staff is in treble clef with a 4/4 time signature. The melody starts on a whole note Bb4, followed by quarter notes C5, D5, and Eb5. The lower staff is in bass clef, showing a series of five lines with a flat sign (b) above them, representing a chord. The system concludes with a double bar line.

Handwritten musical score for the third system. It consists of two staves. The upper staff is in treble clef with a 4/4 time signature. The melody starts on a whole note G#4, followed by quarter notes A4, Bb4, and C5. There are wavy lines above the notes, possibly indicating a trill or a specific articulation. The lower staff is in bass clef, showing a series of five lines with a flat sign (b) above them, representing a chord. The system concludes with a double bar line.

(poco rit)

Handwritten musical score for the first system. It consists of two staves. The upper staff is in treble clef and contains a melodic line starting with a quarter note, followed by a half note, and then a quarter note with a slur. A piano (*p*) dynamic marking is present. The lower staff is in bass clef and contains a bass line with quarter notes. There are some handwritten annotations above the notes, including a flat sign (*b*) and a sharp sign (*#*).

perante (feindlich)

Handwritten musical score for the second system, labeled "perante (feindlich)". It consists of two staves. The upper staff is in treble clef and contains a melodic line with eighth notes and a circled "H" in the first measure. The lower staff is in bass clef and contains a bass line with quarter notes. There are various handwritten annotations, including slurs and accents.

Handwritten musical score for the third system. It consists of two staves. The upper staff is in treble clef and contains a melodic line with eighth notes and a circled "H" in the first measure. The lower staff is in bass clef and contains a bass line with quarter notes. There are various handwritten annotations, including slurs and accents.

Handwritten musical score for the fourth system. It consists of two staves. The upper staff is in treble clef and contains a melodic line with eighth notes and a circled "H" in the first measure. The lower staff is in bass clef and contains a bass line with quarter notes. There are various handwritten annotations, including slurs and accents.

gut ---

Handwritten musical notation for the first system. It consists of two staves. The upper staff is in treble clef and contains several notes with stems, some beamed together. A circled 'III' is written in the left hand. The lower staff is in bass clef and contains several notes with stems, some beamed together. A circled 'III' is written in the right hand. A bracket with the number '8' spans across the right side of the system.

sehr ruhig (frei)

Handwritten musical notation for the second system. It consists of two staves. The upper staff is in treble clef and contains several notes with stems, some beamed together. A circled 'P' is written in the left hand. The lower staff is in bass clef and contains several notes with stems, some beamed together. A circled 'f' is written in the right hand.

Handwritten musical notation for the third system. It consists of two staves. The upper staff is in treble clef and contains several notes with stems, some beamed together. A circled 'f' is written in the left hand. The lower staff is in bass clef and contains several notes with stems, some beamed together. A circled 'f' is written in the right hand.

bweit

Handwritten musical notation for the first system. The left hand (treble clef) features a circled **ff** dynamic marking and a series of chords with accents (^) above them. The right hand (bass clef) contains a melodic line with eighth notes and accents (^) above them.

Handwritten musical notation for the second system. The left hand (treble clef) has a melodic line with eighth notes and accents (^) above them. The right hand (bass clef) has a bass line with chords and accents (^) above them.

Handwritten musical notation for the third system. The left hand (treble clef) is marked **frei** and **fff**, featuring a dense texture of notes with a slur over the first three measures and a **Pedal** marking below. The right hand (bass clef) has a melodic line with accents (^) above it. A box containing **D.C.** is located at the bottom right of the system.

Adagio giusto (rit.)

Handwritten musical score for the first system. The piano staff (top) contains notes with accents (^) and dynamic markings (pp). The bass staff (bottom) contains notes with accents (^) and dynamic markings (pp). The system concludes with a double bar line.

(rit.)

Handwritten musical score for the second system. The piano staff (top) contains notes with accents (^) and dynamic markings (pp). The bass staff (bottom) contains notes with accents (^) and dynamic markings (pp). A fermata is placed over the final note of the piano staff. The word "lunga" is written above the staff, with a long horizontal line extending across the system. The system concludes with a double bar line.

2

weit

Handwritten musical notation for the first system. It features a treble clef and a 4/4 time signature. The music consists of two staves. The upper staff contains several notes with accidentals (sharps and naturals) and stems, some with accents. The lower staff contains chords with accidentals and stems, some with wavy lines indicating vibrato or tremolo. There are vertical bar lines separating the measures.

Handwritten musical notation for the second system. It features a treble clef. The music consists of two staves. The upper staff contains notes with accidentals and stems, some with accents. The lower staff contains chords with accidentals and stems, some with wavy lines. There are vertical bar lines separating the measures.

Handwritten musical notation for the third system. It features a treble clef. The music consists of two staves. The upper staff contains notes with accidentals and stems, some with accents. The lower staff contains chords with accidentals and stems, some with wavy lines. There are vertical bar lines separating the measures.

(poco rit) breit

The image shows a handwritten musical score for piano, consisting of five systems of staves. The notation is in red ink on aged paper. The first system has a treble clef and a key signature of one sharp (F#). It features a melody with slurs and accents, and a bass line with chords and slurs. The second system continues the melody and bass line. The third system shows a wavy line above the staff, possibly indicating a tremolo or a specific texture. The fourth system has a treble clef and a key signature of one flat (Bb), with a melody and bass line. The fifth system also has a treble clef and a key signature of one flat, with a melody and bass line. There are various performance markings throughout, including slurs, accents, and dynamic markings like 'pp'.

Größe

ruhig beginnen / Steigerung ----- cresc. tacc?

rivel. cresc.

(rit-----) D.C. al

Coda (Lento) ()

3/8 **ppp**

Pedal #0

3

Molto assai

Handwritten musical score for the first system. The top staff is a treble clef with notes and accidentals. The bottom staff is a bass clef with a circled "Key" and chord diagrams. A circled "8" is under the first two chords.

Handwritten musical score for the second system. The top staff has notes with accents. The bottom staff has a circled "8" and chord diagrams.

Handwritten musical score for the third system. The top staff has notes with accents. The bottom staff has a circled "8" and chord diagrams.

Handwritten musical notation for the first system. The treble clef staff contains two measures of music. The first measure has notes G4, A4, B4, and C5, with a slur over the last three notes and an accent (^) over the first. The second measure has notes G4, A4, B4, and C5, with a slur over the last three notes and an accent (^) over the first. The bass clef staff has a whole rest in the first measure and a half note G3 in the second measure. A dynamic marking 'ppp' is written above the first measure.

Handwritten musical notation for the second system. The treble clef staff has two measures. The first measure has notes G4, A4, B4, and C5, with a slur over the last three notes and an accent (^) over the first. The second measure has notes G4, A4, B4, and C5, with a slur over the last three notes and an accent (^) over the first. The bass clef staff has a whole rest in the first measure and a half note G3 in the second measure.

Handwritten musical notation for the third system. The treble clef staff has two measures. The first measure has notes G4, A4, B4, and C5, with a slur over the last three notes and an accent (^) over the first. The second measure has notes G4, A4, B4, and C5, with a slur over the last three notes and an accent (^) over the first. The bass clef staff has a whole rest in the first measure and a half note G3 in the second measure.

Handwritten musical notation for the fourth system. The treble clef staff has two measures. The first measure has notes G4, A4, B4, and C5, with a slur over the last three notes and an accent (^) over the first. The second measure has notes G4, A4, B4, and C5, with a slur over the last three notes and an accent (^) over the first. The bass clef staff has a whole rest in the first measure and a half note G3 in the second measure.

(2/4 + Tempo - Steigerung)

Handwritten musical notation for the first system, measures 1-3. The music is written on two staves (treble and bass clefs). The first staff contains a melodic line with eighth notes and slurs. The second staff contains a bass line with eighth notes and slurs. The key signature has one sharp (F#).

Handwritten musical notation for the second system, measures 4-6. The music continues on two staves. The first staff has a melodic line with eighth notes and slurs. The second staff has a bass line with eighth notes and slurs. The key signature has one sharp (F#).

Handwritten musical notation for the third system, measures 7-9. The music is written on two staves. The first staff features a triplet of eighth notes with a sharp sign (#) above each note. The second staff has a bass line with notes and slurs. The key signature has one sharp (F#).

Handwritten musical notation for the fourth system, measures 10-12. The music is written on two staves. The first staff features a triplet of eighth notes with a sharp sign (#) above each note. The second staff has a bass line with notes and slurs. The key signature has one sharp (F#).

oder nach + rhythmisch)

Handwritten musical score for the first system. The treble clef staff contains several chords with notes marked with accents (^) and slurs. The bass clef staff contains a few notes, including a low F. The system concludes with two measures of whole rests.

Handwritten musical score for the second system. The treble clef staff shows chords with notes and slurs. The bass clef staff features a complex chordal structure with multiple sharps (#) and notes. The system ends with two measures of whole rests.

Handwritten musical score for the third system. The treble clef staff has notes with slurs and accents. The bass clef staff contains a long melodic line with a wavy line above it, indicating a specific articulation or performance style. The system ends with a measure of whole rest.

Handwritten musical score for the fourth system. The treble clef staff has notes with slurs and accents. The bass clef staff contains a long melodic line with a wavy line above it. The system concludes with a circled symbol in the treble clef staff and a measure of whole rest in the bass clef staff.

perante (Lento)

Handwritten musical score for the first system. The piano staff (top) contains chords: $\text{C}\sharp\text{m}$, $\text{B}\flat\text{m}$, $\text{A}\flat\text{m}$, $\text{G}\flat\text{m}$, and $\text{F}\sharp\text{m}$. The bass staff (bottom) contains chords: $\text{C}\sharp\text{m}$, $\text{B}\flat\text{m}$, $\text{A}\flat\text{m}$, and $\text{G}\flat\text{m}$. Above the piano staff, there are four slanted lines with upward-pointing arrows. The system is enclosed in a double bar line.

Lento (8/8)

Handwritten musical score for the second system. The piano staff (top) contains chords: $\text{B}\flat\text{m}$ and $\text{A}\flat\text{m}$. The bass staff (bottom) contains chords: $\text{G}\flat\text{m}$ and $\text{F}\sharp\text{m}$. The system is enclosed in a double bar line.

Handwritten musical score for the third system. The piano staff (top) contains chords: $\text{B}\flat\text{m}$ and $\text{A}\flat\text{m}$. The bass staff (bottom) contains chords: $\text{G}\flat\text{m}$ and $\text{F}\sharp\text{m}$. The system is enclosed in a double bar line.

Handwritten musical score for the fourth system. The piano staff (top) contains chords: $\text{G}\flat\text{m}$, $\text{F}\sharp\text{m}$, $\text{E}\flat\text{m}$, and $\text{D}\flat\text{m}$. The bass staff (bottom) contains chords: $\text{G}\flat\text{m}$, $\text{F}\sharp\text{m}$, $\text{E}\flat\text{m}$, and $\text{D}\flat\text{m}$. The system is enclosed in a double bar line.

Handwritten musical score for the first system. It consists of two staves. The upper staff is in treble clef and contains several notes with stems, some with slurs and accents. The lower staff is in bass clef and contains notes with stems, some with slurs and accents. A dynamic marking 'p' is circled in the first measure of the lower staff.

Handwritten musical score for the second system. It consists of two staves. The upper staff is in treble clef and contains notes with stems, some with slurs and accents. The lower staff is in bass clef and contains notes with stems, some with slurs and accents. Dynamic markings 'mp' and 'f' are present in the first and second measures of the lower staff, respectively.

ohne Wert

Handwritten musical score for the third system. It consists of two staves. The upper staff is in treble clef and contains notes with stems, some with slurs and accents. The lower staff is in bass clef and contains notes with stems, some with slurs and accents. A dynamic marking 'ff' is circled in the first measure of the lower staff.

(poco rit)

Handwritten musical score for the fourth system. It consists of two staves. The upper staff is in treble clef and contains notes with stems, some with slurs and accents. The lower staff is in bass clef and contains notes with stems, some with slurs and accents. A dynamic marking 'ff' is present in the second measure of the lower staff.

(mit größter RUHE)

Handwritten musical score for the first system. It consists of two staves. The upper staff is in treble clef with a key signature of one flat (B-flat) and a 4/4 time signature. It contains three measures of music with notes and rests. The lower staff is in bass clef with a key signature of one flat and a 4/4 time signature. It contains three measures of music, including a circled chord in the second measure. The dynamic marking *ppp* is written in the first measure of the upper staff, and the word *Pedal* is written below the first measure of the lower staff.

Handwritten musical score for the second system. It consists of two staves. The upper staff is in treble clef with a key signature of one flat and a 4/4 time signature. It contains three measures of music, including a large slur over the first two measures and a fermata over the third. The lower staff is in bass clef with a key signature of one flat and a 4/4 time signature. It contains three measures of music, including a large slur over the first two measures and a fermata over the third. The dynamic marking *fp* is written in the first measure of the upper staff, and the word *frei* is written above the first measure.

Handwritten musical score for the third system. It consists of two staves. The upper staff is in treble clef with a key signature of one flat and a 4/4 time signature. It contains three measures of music with notes and rests. The lower staff is in bass clef with a key signature of one flat and a 4/4 time signature. It contains three measures of music with notes and rests. The dynamic marking *ppp* is written in the first measure of the upper staff, and the word *ritorale* is written above the first measure.

Handwritten musical score for the fourth system. It consists of two staves. The upper staff is in treble clef with a key signature of one flat and a 4/4 time signature. It contains three measures of music with notes and rests. The lower staff is in bass clef with a key signature of one flat and a 4/4 time signature. It contains three measures of music with notes and rests. The dynamic marking *ppp* is written in the first measure of the upper staff, and the word *Andante* is written below the first measure. The word *accel. cresc.* is written above the first measure of the upper staff.

accel.

Handwritten musical notation for the first system. The treble clef staff contains a series of notes with various accidentals (sharps, flats, naturals) and dynamic markings like accents and slurs. The bass clef staff contains a series of notes with accidentals. The system concludes with a double bar line and a final chord.

D.C.
No. 3 al

CODA accel.

Handwritten musical notation for the second system. The treble clef staff starts with a circled 'FFF' dynamic marking and contains notes with various accidentals. The bass clef staff contains notes with accidentals. The system concludes with a double bar line and a final chord.

Prestissimo

Handwritten musical notation for the third system. The treble clef staff begins with a circled 'FFF' dynamic marking and contains notes with various accidentals. The bass clef staff contains notes with accidentals. The system concludes with a double bar line and a final chord.

4

Allegretto (by + Scherzo)
Scherzo

3/4
pp
Pedal
f

ff

ff

Handwritten musical notation for the first system. The treble clef staff contains a melodic line with notes G4, A4, B4, C5, and D5, with a slur over the first three notes and an accent over the final note. The bass clef staff contains a bass line with notes G2, A2, B2, and C3, with a slur over the first three notes. The key signature has one sharp (F#).

Handwritten musical notation for the second system. The treble clef staff contains a melodic line with notes G4, A4, B4, C5, and D5, with a slur over the first three notes and an accent over the final note. The bass clef staff contains a bass line with notes G2, A2, B2, and C3, with a slur over the first three notes. The key signature has one sharp (F#).

Handwritten musical notation for the third system. The treble clef staff contains a melodic line with notes G4, A4, B4, C5, and D5, with a slur over the first three notes and an accent over the final note. The bass clef staff contains a bass line with notes G2, A2, B2, and C3, with a slur over the first three notes. The key signature has one sharp (F#).

Handwritten musical notation for the fourth system. The treble clef staff contains a melodic line with notes G4, A4, B4, C5, and D5, with a slur over the first three notes and an accent over the final note. The bass clef staff contains a bass line with notes G2, A2, B2, and C3, with a slur over the first three notes. The key signature has one sharp (F#).

(2te pp)

1+2 (p) ←

immer turbulenter

Handwritten musical notation for the first system. The treble staff contains a series of notes with a fermata over the first two measures and a slur over the last two. The bass staff has notes with a slur over the first two measures. A dynamic marking 'ff' is present in the first measure of the treble staff.

Handwritten musical notation for the second system. The treble staff has notes with a slur over the first two measures and a fermata over the last two. The bass staff has notes with a slur over the first two measures. A dynamic marking 'ff' is present in the first measure of the treble staff.

Handwritten musical notation for the third system. The treble staff has notes with a slur over the first two measures and a fermata over the last two. The bass staff has notes with a slur over the first two measures. A dynamic marking 'ff' is present in the first measure of the treble staff.

Presto

CODA



Handwritten musical notation for the fourth system. The treble staff has notes with a slur over the first two measures and a fermata over the last two. The bass staff has notes with a slur over the first two measures. A dynamic marking 'ff' is present in the first measure of the treble staff.

Leute

4/4

Handwritten musical notation for the first system, including piano and bass staves. The piano staff shows chords: $\sharp\sharp\sharp$, $\sharp\sharp\sharp$, $\flat\sharp\sharp$, $\sharp\sharp\sharp$. The bass staff shows chords: $\sharp\sharp\sharp$, $\sharp\sharp\sharp$. Dynamics include accents and a circled $\sharp\sharp\sharp$ in the piano staff.

frei

Handwritten musical notation for the second system. The piano staff has a melodic line with dynamics fp , f , ff , and pp . The bass staff shows chords: $\flat\sharp\sharp$, $\sharp\sharp\sharp$, $\flat\sharp\sharp$. There is a circled pp in the piano staff.

Handwritten musical notation for the third system. The piano staff shows chords: $\flat\sharp\sharp$, $\flat\sharp\sharp$, $\flat\sharp\sharp$, $\flat\sharp\sharp$. The bass staff shows chords: $\sharp\sharp\sharp$, $\sharp\sharp\sharp$. Dynamics include accents and a circled $\sharp\sharp\sharp$ in the piano staff.

Handwritten musical notation for the fourth system. The piano staff has a melodic line with dynamics pp , ff , and pp . The bass staff shows chords: $\sharp\sharp\sharp$, $\flat\sharp\sharp$. There is a circled pp in the piano staff.

Handwritten musical score for the first system. The treble clef has a circled key signature of two sharps (F# and C#). The notation includes eighth and sixteenth notes with accents and slurs, and a bass line with chords and slurs.

(frei)

Handwritten musical score for the second system, marked *pp* and *poco rit*. It features a treble clef and a circled key signature of two sharps. The notation includes a long slur over several notes and dynamic markings.

perante (rit)

Handwritten musical score for the third system, marked *pp* and *poco rit*. It features a treble clef and a circled key signature of two sharps. The notation includes chords and slurs, ending with a double bar line and "G.P."

Lento *(poco rit)*

Handwritten musical score for the fourth system, marked *pp* and *Lento*. It features a treble clef and a circled key signature of two sharps. The notation includes notes with slurs and accents, ending with a double bar line.

lefts (A)

Handwritten musical notation for the first system. The treble staff contains a melodic line with a slur and a fermata. The bass staff contains a bass line with a slur and a fermata. Dynamics include *pp* and *f*.

Handwritten musical notation for the second system. The treble staff contains a melodic line with a slur and a fermata. The bass staff contains a bass line with a slur and a fermata. Dynamics include *pp*, *p*, and *fp*.

Handwritten musical notation for the third system. The treble staff contains a melodic line with a slur and a fermata. The bass staff contains a bass line with a slur and a fermata. Dynamics include *fp* and *f*.

schreibt (tempo di)

ritacca

Handwritten musical notation for the fourth system. The treble staff contains a melodic line with a slur and a fermata. The bass staff contains a bass line with a slur and a fermata. Dynamics include *pp* and *D.C.*

D.C. (2/4)
 esse mit //
 al *COR*

CODA (Prestissimo)

5

Mo di. (Kvotegk)

Handwritten musical notation for the first system. It features a treble clef and a circled 'p' dynamic marking. The notation includes several notes with accents (^) and slurs. There are also some markings that look like 'y' and 'i' below the notes. The system ends with a double bar line and a fermata-like symbol.

Handwritten musical notation for the second system. It features a treble clef and notes with various accidentals (sharps and flats) and slurs. The notation is somewhat complex with many accidentals and slurs. The system ends with a double bar line and a fermata-like symbol.

Handwritten musical notation for the third system. It features a treble clef and a circled 'p' dynamic marking. The notation includes notes with various accidentals (sharps and flats) and slurs. There are also some markings that look like 'y' and 'i' below the notes. The system ends with a double bar line and a fermata-like symbol.

Handwritten musical notation for the first system. The top staff is in treble clef and the bottom staff is in bass clef. The music consists of two measures. The first measure has notes with accidentals (flats and naturals) and a dynamic marking 'p'. The second measure has notes with accidentals and a dynamic marking 'f'. There are also some handwritten annotations like 'up' and 'V'.

Handwritten musical notation for the second system. The top staff is in treble clef and the bottom staff is in bass clef. The music consists of three measures. The first measure has notes with accidentals and a circled 'p' dynamic marking. The second measure has notes with accidentals and a circled 'f' dynamic marking. The third measure has notes with accidentals and a circled 'p' dynamic marking. There are also some handwritten annotations like 'V' and 'f'.

Handwritten musical notation for the third system. The top staff is in treble clef and the bottom staff is in bass clef. The music consists of three measures. The first measure has notes with accidentals and a circled 'p' dynamic marking. The second measure has notes with accidentals and a circled 'f' dynamic marking. The third measure has notes with accidentals and a circled 'p' dynamic marking. There are also some handwritten annotations like 'V' and 'f'.

Handwritten musical notation for the fourth system. The top staff is in treble clef and the bottom staff is in bass clef. The music consists of three measures. The first measure has notes with accidentals and a circled 'p' dynamic marking. The second measure has notes with accidentals and a circled 'f' dynamic marking. The third measure has notes with accidentals and a circled 'p' dynamic marking. There are also some handwritten annotations like 'V' and 'f'.

Handwritten musical notation for the first system. The treble clef staff contains notes with accidentals (sharps and flats) and a circled 'ff' dynamic marking. The bass clef staff contains a rhythmic pattern of eighth notes with a sharp sign.

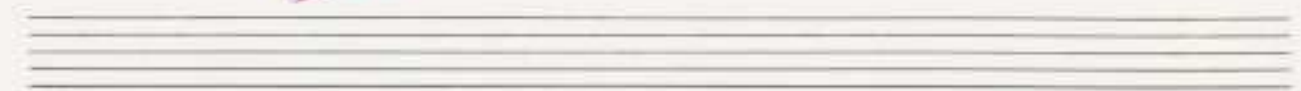
Handwritten musical notation for the second system. The treble clef staff shows complex chordal structures with multiple accidentals. The bass clef staff continues the rhythmic pattern with some rests.

Handwritten musical notation for the third system. The treble clef staff features a circled 'ff' dynamic marking and melodic lines with accents. The bass clef staff has a rhythmic pattern with accents.

Handwritten musical notation for the fourth system. The treble clef staff ends with a circled 'CODA' marking. The bass clef staff has a rhythmic pattern with accents.



Handwritten musical notation in red ink. The system consists of two staves. The upper staff contains four measures of music with notes and rests. A circled 'pp' dynamic marking is present in the first measure. The lower staff contains a melodic line with notes and rests.



Handwritten musical notation in red ink. The system consists of two staves. The upper staff contains four measures of music with notes and rests. A circled 'p' dynamic marking is present in the first measure. The lower staff contains a melodic line with notes and rests.



Handwritten musical notation in red ink. The system consists of two staves. The upper staff contains four measures of music with notes and rests. A circled 'f' dynamic marking is present in the first measure. The lower staff contains a melodic line with notes and rests.



Handwritten musical notation in red ink. The system consists of two staves. The upper staff contains four measures of music with notes and rests. The lower staff contains a melodic line with notes and rests.

Handwritten musical score for the first system. It consists of two staves. The upper staff has notes with accidentals (sharps and naturals) and dynamic markings 'ff' and 'cresc.'. The lower staff has notes with accidentals and dynamic markings 'ff' and 'cresc.'. There are also some handwritten annotations above the notes, possibly indicating fingerings or phrasing. The system ends with a double bar line and a fermata.

immer mehr steigern →

Handwritten musical score for the second system. It consists of two staves. The upper staff has notes with accidentals and dynamic markings 'accel.' and 'cresc.'. There is a circled 'p' marking. The lower staff has notes with accidentals and dynamic markings 'p' and 'cresc.'. The system ends with a double bar line and a fermata.

Handwritten musical score for the third system. It consists of two staves. The upper staff has notes with accidentals and dynamic markings 'p' and 'cresc.'. The lower staff has notes with accidentals and dynamic markings 'p' and 'cresc.'. The system ends with a double bar line and a fermata.

Handwritten musical score for the fourth system. It consists of two staves. The upper staff has notes with many accidentals and dynamic markings 'p' and 'cresc.'. The lower staff has notes with many accidentals and dynamic markings 'p' and 'cresc.'. There are also some handwritten annotations above the notes. The system ends with a double bar line and a fermata.

Presto (Ausschnitt)

Handwritten musical notation for the first system, measures 1-3. The music is in 3/4 time with a key signature of one sharp (F#). The first staff (treble clef) contains a melodic line with a slur over measures 1 and 2, and a fermata over the final note in measure 3. The second staff (bass clef) contains a bass line with a slur over measures 1 and 2, and a fermata over the final note in measure 3.

Handwritten musical notation for the second system, measures 4-6. The music continues in 3/4 time with a key signature of one sharp. The first staff (treble clef) features a melodic line with a slur over measures 4 and 5, and a fermata over the final note in measure 6. The second staff (bass clef) contains a bass line with a slur over measures 4 and 5, and a fermata over the final note in measure 6.

Handwritten musical notation for the third system, measures 7-9. The music continues in 3/4 time with a key signature of one sharp. The first staff (treble clef) contains a melodic line with a slur over measures 7 and 8, and a fermata over the final note in measure 9. The second staff (bass clef) contains a bass line with a slur over measures 7 and 8, and a fermata over the final note in measure 9.

Handwritten musical notation for the fourth system, measures 10-12. The music continues in 3/4 time with a key signature of one sharp. The first staff (treble clef) features a melodic line with a slur over measures 10 and 11, and a fermata over the final note in measure 12. The second staff (bass clef) contains a bass line with a slur over measures 10 and 11, and a fermata over the final note in measure 12.

Handwritten musical notation for the first system. The treble clef staff contains a melodic line starting with a quarter note G#4, followed by a quarter note A4, and a half note B4. The bass clef staff contains a chord of G#4, B4, and D5. The second measure has a half note G#4. The third measure has a half note G#4. The fourth measure has a half note G#4. The fifth measure has a half note G#4. The sixth measure has a half note G#4.

Handwritten musical notation for the second system. The treble clef staff contains a melodic line starting with a quarter note G#4, followed by a quarter note A4, and a half note B4. The bass clef staff contains a chord of G#4, B4, and D5. The second measure has a half note G#4. The third measure has a half note G#4. The fourth measure has a half note G#4. The fifth measure has a half note G#4. The sixth measure has a half note G#4.

Handwritten musical notation for the third system. The treble clef staff contains a melodic line starting with a quarter note G#4, followed by a quarter note A4, and a half note B4. The bass clef staff contains a chord of G#4, B4, and D5. The second measure has a half note G#4. The third measure has a half note G#4. The fourth measure has a half note G#4. The fifth measure has a half note G#4. The sixth measure has a half note G#4.

Handwritten musical notation for the fourth system. The treble clef staff contains a melodic line starting with a quarter note G#4, followed by a quarter note A4, and a half note B4. The bass clef staff contains a chord of G#4, B4, and D5. The second measure has a half note G#4. The third measure has a half note G#4. The fourth measure has a half note G#4. The fifth measure has a half note G#4. The sixth measure has a half note G#4.

immer turbulenter

Handwritten musical notation for the first system. It consists of two staves. The upper staff has a treble clef and contains a circled 'III' marking, followed by notes and rests. The lower staff contains notes with accents and rests.

Handwritten musical notation for the second system. It consists of two staves. The upper staff has a treble clef and contains notes with sharp signs. The lower staff contains notes with sharp signs and rests.

Handwritten musical notation for the third system. It consists of two staves. The upper staff has a treble clef and contains notes with various accidentals and accents. The lower staff contains notes with various accidentals and accents.

Andantissimo

Handwritten musical notation for the fourth system. It consists of two staves. The upper staff has a treble clef and contains notes with sharp signs and a circled 'III' marking. The lower staff contains notes with sharp signs and rests.

leuto

guit

Handwritten musical notation for the first system. The treble clef staff contains notes with accidentals (sharps) and dynamic markings like pp . The bass clef staff contains notes with accidentals and dynamic markings like pp . There are also some handwritten annotations and a circled sharp sign.

Handwritten musical notation for the second system. The treble clef staff contains notes with accidentals and dynamic markings like pp . The bass clef staff contains notes with accidentals and dynamic markings like pp . There are also some handwritten annotations and a circled sharp sign.

leuto bereit

guit

Handwritten musical notation for the third system. The treble clef staff contains notes with accidentals and dynamic markings like pp . The bass clef staff contains notes with accidentals and dynamic markings like pp . There are also some handwritten annotations and a circled sharp sign.

Handwritten musical notation for the fourth system. The treble clef staff contains notes with accidentals and dynamic markings like pp . The bass clef staff contains notes with accidentals and dynamic markings like pp . There are also some handwritten annotations and a circled sharp sign.

Größtes mit + oben

mit
größter Ruhe

D.C. No. 5 al

⊕ CODA

CODA

sempre
dein
Zeit

Gesetz mit - dein

(p)

Adagio

No 6

6

Andante

Handwritten musical score for the first system. It features a treble clef and a circled key signature of three sharps (F#, C#, G#). The notation includes notes, rests, and dynamic markings such as pp and $rit...$. There are also some handwritten annotations and a large bracket at the top right.

Handwritten musical score for the second system. It features a treble clef and a circled key signature of three sharps. The notation includes notes, rests, and dynamic markings such as pp . There are also some handwritten annotations and a large bracket at the top right.

Handwritten musical score for the third system. It features a treble clef and a circled key signature of three sharps. The notation includes notes, rests, and dynamic markings such as p . There are also some handwritten annotations and a large bracket at the top right.

Handwritten musical score for the fourth system. It features a treble clef and a circled key signature of three sharps. The notation includes notes, rests, and dynamic markings such as p . There are also some handwritten annotations and a large bracket at the top right.

sehr ruhig (dolce)

Handwritten musical notation for the first system. The treble clef staff contains notes with accidentals (flats and naturals) and dynamic markings including p and ffp . The bass clef staff contains notes with accidentals and a circled ffp marking.

Handwritten musical notation for the second system. The treble clef staff features notes with accidentals and dynamic markings p and ffp . The bass clef staff contains notes with accidentals and a circled ffp marking.

Handwritten musical notation for the third system. The treble clef staff has notes with accidentals and dynamic markings p and ffp . The bass clef staff contains notes with accidentals and a circled ffp marking.

Handwritten musical notation for the fourth system. The treble clef staff contains notes with accidentals and dynamic markings p and ffp . The bass clef staff has notes with accidentals and a circled ffp marking.

Handwritten musical notation for a piano piece. It features two staves with chords and notes. The first staff has a treble clef and a 4/4 time signature. The second staff has a bass clef. The music includes a key signature of one sharp (F#) and a dynamic marking of 'pp'. There are various annotations like slurs, accents, and a double bar line with repeat signs.

langsam beginnen (ständig steigern bis Presto)

Handwritten musical notation for a piano piece. It features two staves. The first staff has a treble clef and a common time signature. The second staff has a bass clef. The music includes a key signature of one sharp (F#) and a dynamic marking of 'mp'. There are various annotations like slurs and a double bar line with repeat signs.

exc. cresc.

Handwritten musical notation for a piano piece. It features two staves. The first staff has a treble clef and a common time signature. The second staff has a bass clef. The music includes a key signature of one sharp (F#) and a dynamic marking of 'pp'. There are various annotations like slurs and a double bar line with repeat signs.

Handwritten musical notation for a piano piece. It features two staves. The first staff has a treble clef and a common time signature. The second staff has a bass clef. The music includes a key signature of one sharp (F#) and a dynamic marking of 'p'. There are various annotations like slurs and a double bar line with repeat signs.

Handwritten musical notation on two staves. The upper staff contains notes with accidentals (flats and naturals) and dynamic markings. The lower staff contains chord diagrams with accidentals and a circled '8'.

Handwritten musical notation on two staves. The upper staff begins with a dynamic marking 'f' and contains notes with accidentals. The lower staff contains chord diagrams with accidentals and a circled '8'.

And. (rit.)

Handwritten musical notation on two staves. The upper staff contains notes with accidentals and dynamic markings. The lower staff contains chord diagrams with accidentals and a circled '8'.

Handwritten musical notation on two staves. The upper staff contains notes with accidentals and dynamic markings. The lower staff contains chord diagrams with accidentals and a circled '8'.

Presto

bavt stacc.

bavt stacc.

bavt stacc.

bavt stacc.

pp \leftarrow cresc.

Handwritten musical notation for the first system. It features a treble clef and a circled '2'. The notation includes several chords with accidentals (flats and naturals) and stems, along with some vertical lines indicating bar boundaries.

Handwritten musical notation for the second system. It features a treble clef and a circled '4'. The notation includes several chords with accidentals and stems, along with vertical lines indicating bar boundaries.

Handwritten musical notation for the third system. It features a treble clef and a circled '11'. The notation includes several chords with accidentals and stems, along with vertical lines indicating bar boundaries.

Handwritten musical notation for the fourth system. It features a treble clef and a circled '11'. The notation includes several chords with accidentals and stems, along with vertical lines indicating bar boundaries.

Handwritten musical notation on a grand staff. Above the staff, there are rhythmic markings: $\uparrow \uparrow \uparrow \uparrow \uparrow \uparrow \uparrow$. The notation consists of two staves with notes and stems, and a large blue scribble at the bottom right.

Handwritten musical notation on a grand staff. The first staff begins with the marking *af 1*. The notation includes notes, stems, and various markings such as $\circ \vee \circ$ and \wedge .

Handwritten musical notation on a grand staff. The notation includes notes, stems, and various markings such as \uparrow , \wedge , and \approx . There is a large blue scribble on the right side of the staff.



Er wird laufend — (uns Mente —) Die Trauergebote gehen
 langsam auseinander — —

Pauken —

ihre Unheil:

mein Paulin — schade ^{und} zu = müde jetzt ^{ist} die was sich hier
 ver = fassen

ab = spielte — deswegen sollst du auch ^{Stulien} zu Senzor

(Am Hofe des Königs) — (König — 7 Minister —
Hoflinge — Hofgesellschaft)

Scene ①

pesante (Mod.) (♩)

Handwritten musical score for the first system. The treble clef part begins with a series of notes, followed by a melodic line with a slur and a fermata. The bass clef part consists of a series of notes with stems pointing downwards.

Handwritten musical score for the second system. The treble clef part continues with a melodic line, including a slur and a fermata. The bass clef part continues with notes and stems pointing downwards.

Handwritten musical score for the third system. The treble clef part includes a dynamic marking 'dim' and a fermata. The bass clef part includes a dynamic marking 'mf' and a fermata.

Handwritten musical score for the fourth system. The treble clef part features a circled 'fff' marking and a fermata. The bass clef part includes a 'Pedal' instruction and a fermata.

breit

Handwritten musical score for the first system. It consists of two staves, treble and bass clef. The music is marked with a circled word "breit". The notation includes various notes, rests, and slurs, with some notes having accents (^) above them.

Handwritten musical score for the second system. It consists of two staves, treble and bass clef. The notation includes various notes, rests, and slurs. There are some markings above the notes, possibly indicating dynamics or articulation. The system ends with a double bar line.

pesante

Handwritten musical score for the third system. It consists of two staves, treble and bass clef. The music is marked with the word "pesante". The notation includes various notes, rests, and slurs, with some notes having accents (^) above them.

accel. →

Handwritten musical score for the fourth system. It consists of two staves, treble and bass clef. The music is marked with the word "accel." followed by an arrow pointing to the right. The notation includes various notes, rests, and slurs, with some notes having accents (^) above them.

accel.

Handwritten musical notation for the first system, featuring a treble clef with a right-pointing arrow and a bass clef with a left-pointing arrow. The music includes eighth notes with accents, a key signature change to one sharp, and a final measure with a double bar line and a left-pointing arrow.

schon wesentlich schneller) → accel.

Handwritten musical notation for the second system, showing a treble clef with eighth notes and a bass clef with a whole note chord. The music continues with eighth notes and a final measure with a double bar line.

rasch - hektisch -

Handwritten musical notation for the third system, marked "2/4" in the treble clef. It features eighth notes with accents and a final measure with a double bar line and a right-pointing arrow.

Handwritten musical notation for the fourth system, showing a treble clef with eighth notes and a bass clef with eighth notes. The music includes a key signature change to one sharp and a final measure with a double bar line.

Presto

breit (♩) (rit.)

din

breit- (♩) (Maestoso)

Handwritten musical score for the first system. It consists of two staves: a piano staff (treble clef) and a bass staff (bass clef). The key signature has two sharps (F# and C#). The time signature is 4/8. The piano staff begins with a half note G4, followed by a quarter note F#4, and then a triplet of eighth notes (E4, D4, C4). The bass staff begins with a half note G3, followed by a quarter note F#3, and then a triplet of eighth notes (E3, D3, C3). There are various accents and slurs throughout the piece.

(dün + zeit ...)

Handwritten musical score for the second system. It consists of two staves: a piano staff (treble clef) and a bass staff (bass clef). The key signature has two sharps (F# and C#). The time signature is 4/8. The piano staff begins with a half note G4, followed by a quarter note F#4, and then a triplet of eighth notes (E4, D4, C4). The bass staff begins with a half note G3, followed by a quarter note F#3, and then a triplet of eighth notes (E3, D3, C3). There are various accents and slurs throughout the piece. Dynamic markings include 'pp' (pianissimo) in the piano staff and 'p' (piano) in the bass staff.

Auftritt (Hopp-Frosch) Scene ②

Handwritten musical score for the third system. It consists of two staves: a piano staff (treble clef) and a bass staff (bass clef). The key signature has two sharps (F# and C#). The time signature is 4/8. The piano staff begins with a half note G4, followed by a quarter note F#4, and then a triplet of eighth notes (E4, D4, C4). The bass staff begins with a half note G3, followed by a quarter note F#3, and then a triplet of eighth notes (E3, D3, C3). There are various accents and slurs throughout the piece. Dynamic markings include 'pp' (pianissimo) in the piano staff and 'p' (piano) in the bass staff.

Handwritten musical score for the fourth system. It consists of two staves: a piano staff (treble clef) and a bass staff (bass clef). The key signature has two sharps (F# and C#). The time signature is 4/8. The piano staff begins with a half note G4, followed by a quarter note F#4, and then a triplet of eighth notes (E4, D4, C4). The bass staff begins with a half note G3, followed by a quarter note F#3, and then a triplet of eighth notes (E3, D3, C3). There are various accents and slurs throughout the piece. Dynamic markings include 'pp' (pianissimo) in the piano staff and 'p' (piano) in the bass staff.

(Tanz - Solo) - Hopp-Frusch

Allegretto (protesk) markant

Handwritten musical notation for the first system. It consists of two staves: a treble clef staff and a bass clef staff. The time signature is 2/4. The key signature has one flat (B-flat). The first measure of the treble staff has a dynamic marking 'p' and a circled '1'. The second measure has a circled '2'. The third measure has a circled '3'. The fourth measure has a circled '4'. The bass staff has notes with stems and beams, and a circled '5' in the second measure.

Handwritten musical notation for the second system. It consists of two staves. The treble staff has a dynamic marking 'mf' in the first measure and 'f' in the second. The bass staff has notes with stems and beams, and a dynamic marking 'f' in the second measure. There are accents (^) over several notes in both staves.

Handwritten musical notation for the third system. It consists of two staves. The treble staff has a dynamic marking 'ff' and the instruction '(poco rit)' written above it. The bass staff has notes with stems and beams, and a dynamic marking 'ff' in the first measure. There are accents (^) over several notes in both staves.

Handwritten musical notation for the fourth system. It consists of two staves. The treble staff has notes with stems and beams, and a dynamic marking 'ff'. The bass staff has notes with stems and beams, and a dynamic marking 'ff'. There is a 'breit' marking above the treble staff. The system ends with a double bar line and repeat dots.

Tempo (Allegretto)

Handwritten musical score for the first system, featuring a treble and bass clef with various notes and rests.

Handwritten musical score for the second system, continuing the piece with similar notation.

erue) →

(rit... dim...)

Handwritten musical score for the third system, including dynamic markings like 'f' and 'rit'.

süß/dim

breit (f) ↑ lautes lachen und Gebärden des Königs und Gefolges

Handwritten musical score for the fourth system, with performance instructions and dynamic markings.

Handwritten musical score for piano, featuring a treble and bass clef. The music includes notes, rests, and dynamic markings such as *mf* and *mf*. The lyrics "sit -" and "dir" are written above the notes. A circled \sharp is present above the first measure of the second system.

Handwritten musical score for piano, featuring a treble and bass clef. The tempo marking is *Allegretto* with the instruction "immer rascher" and *accel.*. The music includes notes, rests, and dynamic markings such as *mf*. A circled \sharp is present above the second measure of the second system.

Handwritten musical score for piano, featuring a treble and bass clef. The music includes notes, rests, and dynamic markings such as *f*. A circled \sharp is present above the first measure of the first system.

Handwritten musical score for piano, featuring a treble and bass clef. The tempo marking is *Presto*. The music includes notes, rests, and dynamic markings such as *ff*. A circled \sharp is present above the first measure of the first system.

(rit...)

pasante

(rit)

breit

(rit)

Presto (immer turbulenter | Hopp Frosch - Tanz) grotesk)

Handwritten musical notation for a piano piece. The system consists of two staves. The left staff is in treble clef and the right in bass clef. The time signature is 2/4. The key signature has two sharps (F# and C#). The notation includes a circled 'ff' (fortissimo) dynamic marking, a circled 'rit.' (ritardando) marking, and a circled 'p' (piano) marking. The piece concludes with a double bar line and a bracketed fingering diagram for the right hand: [7-5-8].

Handwritten musical notation for a piano piece. The system consists of two staves. The left staff is in treble clef and the right in bass clef. The time signature is 2/4. The key signature has two sharps (F# and C#). The notation includes a circled 'ff' (fortissimo) dynamic marking and a circled 'rit.' (ritardando) marking. The piece concludes with a double bar line and a bracketed fingering diagram for the right hand: [7-5-8].

(poco rit.)

Handwritten musical notation for a piano piece. The system consists of two staves. The left staff is in treble clef and the right in bass clef. The time signature is 2/4. The key signature has two sharps (F# and C#). The notation includes a circled 'rit.' (ritardando) marking and a circled 'p' (piano) marking. The piece concludes with a double bar line and a bracketed fingering diagram for the right hand: [7-5-8].

(rit.)

Handwritten musical notation for a piano piece. The system consists of two staves. The left staff is in treble clef and the right in bass clef. The time signature is 2/4. The key signature has two sharps (F# and C#). The notation includes a circled 'rit.' (ritardando) marking and a circled 'p' (piano) marking. The piece concludes with a double bar line and a bracketed fingering diagram for the right hand: [7-5-8].

breit (zit... diu)

Lento (enttäushtes Mürmeln)

Lento (f) letzten Versuch | Hopp-Frosch) Scene ③

(kläglich) — (seit...)

lento

salto (letzter Versuch) den König + Gefolge zu erheitern — (Scene 4)

wild — immer mehr Ekstase

ecce!

Handwritten musical notation for the first system. The treble clef staff contains a sequence of notes: G4, A4, B4, C5, B4, A4, G4, F4, E4, D4, C4. Above the staff are slurs and accents. The bass clef staff contains a sequence of notes: C3, D3, E3, F3, G3, A3, B3, C4, B3, A3, G3, F3, E3, D3, C3. There are slurs and accents above the bass staff. A sharp sign (#) is written to the left of the bass staff. An arrow points from the treble staff to the bass staff.

Handwritten musical notation for the second system. The treble clef staff contains a sequence of notes: C4, D4, E4, F4, G4, A4, B4, C5, B4, A4, G4, F4, E4, D4, C4. Above the staff are slurs and accents. The bass clef staff contains a sequence of notes: C3, D3, E3, F3, G3, A3, B3, C4, B3, A3, G3, F3, E3, D3, C3. There are slurs and accents above the bass staff.

(Hepp-Frosch - bricht allmählich zusammen)

Handwritten musical notation for the third system. The treble clef staff contains a sequence of notes: C4, D4, E4, F4, G4, A4, B4, C5, B4, A4, G4, F4, E4, D4, C4. Above the staff are slurs and accents. The bass clef staff contains a sequence of notes: C3, D3, E3, F3, G3, A3, B3, C4, B3, A3, G3, F3, E3, D3, C3. There are slurs and accents above the bass staff.

immer langsamer und leiser

Handwritten musical notation for the fourth system. The treble clef staff contains a sequence of notes: C4, D4, E4, F4, G4, A4, B4, C5, B4, A4, G4, F4, E4, D4, C4. Above the staff are slurs and accents. The bass clef staff contains a sequence of notes: C3, D3, E3, F3, G3, A3, B3, C4, B3, A3, G3, F3, E3, D3, C3. There are slurs and accents above the bass staff.

grün - dünn)

Handwritten musical notation for a piano part, consisting of four measures. The first measure has a circled 'p' and a dynamic marking of 'p'. The second measure has a circled 'p'. The third measure has a circled 'fp'. The fourth measure has a circled 'p'. The notes are mostly quarter notes with accents.

Lento (Tripetta - Hoftritt) (sie tanzt zu Hopp-Frosch - tröstend)

Handwritten musical notation for a piano part in 4/8 time, labeled 'Scene 5'. It features a piano part with a circled '5' and a dynamic marking of 'pp'. The notes are mostly quarter notes with accents.

Handwritten musical notation for a piano part, consisting of three measures. The first measure has a circled '5' and a dynamic marking of 'p'. The second measure has a circled '5'. The third measure has a circled '5'. The notes are mostly quarter notes with accents.

Handwritten musical notation for a piano part, consisting of three measures. The first measure has a circled '5' and a dynamic marking of 'p'. The second measure has a circled '5'. The third measure has a circled '5'. The notes are mostly quarter notes with accents.

Handwritten musical notation for the first system, featuring a treble and bass clef with various notes and accidentals.

andite
pressionata (Drehungen - Bösartigkeit
des Köpfs + Minister.)
Sc. (8)

Handwritten musical notation for the second system, including performance instructions like "ff" and "rascher".

Handwritten musical notation for the third system, showing complex melodic lines in both staves.

Handwritten musical notation for the fourth system, concluding with a double bar line.

Leute (Tanz der Triquetra - Tröstet Hopp-Frosch)

Handwritten musical score for the first system. The treble clef part begins with a series of notes: $\hat{1}$, $\hat{2}$, $\hat{3}$, $\hat{4}$, $\hat{5}$, $\hat{6}$, $\hat{7}$, $\hat{8}$, $\hat{9}$, $\hat{10}$. The bass clef part has notes $\hat{1}$, $\hat{2}$, $\hat{3}$, $\hat{4}$, $\hat{5}$, $\hat{6}$, $\hat{7}$, $\hat{8}$, $\hat{9}$, $\hat{10}$. There are various accidentals and dynamics markings throughout.

Handwritten musical score for the second system. The treble clef part continues with notes $\hat{1}$, $\hat{2}$, $\hat{3}$, $\hat{4}$, $\hat{5}$, $\hat{6}$, $\hat{7}$, $\hat{8}$, $\hat{9}$, $\hat{10}$. The bass clef part has notes $\hat{1}$, $\hat{2}$, $\hat{3}$, $\hat{4}$, $\hat{5}$, $\hat{6}$, $\hat{7}$, $\hat{8}$, $\hat{9}$, $\hat{10}$. There are various accidentals and dynamics markings throughout.

Handwritten musical score for the third system. The treble clef part continues with notes $\hat{1}$, $\hat{2}$, $\hat{3}$, $\hat{4}$, $\hat{5}$, $\hat{6}$, $\hat{7}$, $\hat{8}$, $\hat{9}$, $\hat{10}$. The bass clef part has notes $\hat{1}$, $\hat{2}$, $\hat{3}$, $\hat{4}$, $\hat{5}$, $\hat{6}$, $\hat{7}$, $\hat{8}$, $\hat{9}$, $\hat{10}$. The text "Hopp Frosch" is written below the first measure. There is a piano part at the bottom with notes $\hat{1}$, $\hat{2}$, $\hat{3}$, $\hat{4}$, $\hat{5}$, $\hat{6}$, $\hat{7}$, $\hat{8}$, $\hat{9}$, $\hat{10}$. There are various accidentals and dynamics markings throughout.

Handwritten musical score for the first system. The treble clef staff contains a melodic line with notes G4, A4, B4, C5, D5, E5, F5, G5, with slurs and accents. The bass clef staff contains chords: G4-B4, G4-B4, G4-B4, G4-B4, G4-B4, G4-B4, G4-B4, G4-B4. Dynamic markings include f and p .

Handwritten musical score for the second system. The treble clef staff starts with a tempo marking "dal sf" and "Lento (rit...)" above a slur. The bass clef staff contains chords: G4-B4, G4-B4, G4-B4, G4-B4, G4-B4, G4-B4, G4-B4, G4-B4. Dynamic markings include f and p .

Handwritten musical score for the third system. The treble clef staff contains notes: G4, A4, B4, C5, D5, E5, F5, G5, with slurs and accents. The bass clef staff contains chords: G4-B4, G4-B4, G4-B4, G4-B4, G4-B4, G4-B4, G4-B4, G4-B4. Dynamic markings include pp and "lunga".

Scene 6

sehr breit (Der König fordert Hefrosch auf) zu trinken - er reicht einen Becher Wein -

Handwritten musical notation for the first system. It features a grand staff with treble and bass clefs. The time signature is 6/4 and the key signature has three sharps (F#, C#, G#). The notation consists of several vertical stems with dots, representing chords or notes, with some accents (^) and a fermata over the final note in the first measure.

Handwritten musical notation for the second system. It includes the tempo marking "Presto" and the instruction "(Frosch)". The time signature is 3/4. The notation shows a series of chords in the right hand and a long, continuous line in the left hand. There are dynamic markings like "p" and "f", and a slur over the right-hand part with the word "rit" written above it.

Handwritten musical notation for the third system. It starts with the tempo marking "breit". The time signature is 6/4 and the key signature has three sharps. The notation features vertical stems with dots and accents (^) in both hands, with a fermata over the final note in the first measure.

Handwritten musical notation for the fourth system. It includes the tempo marking "Allegretto" and the instruction "(rit)" with a downward arrow. The time signature is 3/4. The notation shows chords in the right hand and a long line in the left hand, with dynamic markings like "p" and "f".

breit

ff

Scene ⑦

wütend (erregt) (ag 2) (er wird gezwungen - Wein zu trinken)

ff

3/4

Hoff
Frosch

|| & letzten 8 Takte nochmals || letzten 8 Takte
(immer wilder → nochmals

sehr breit (schmerzlich)

kurze
G.P.

ff

dim

(poco rit ----)

ff

Pedal

Pedal

dal

Scene ⑧

Tripetta nähert sich dem König

ruhig (d)

kniet sich auf die Knie — bittet — ihm Freund zu sein

pesante

poco più.....

ruhig -

Der König stößt sie wortlos
 von sich - und schüttet
 ihr den vollen Becher Wein
 ins Gesicht

sie erhebt sich - wankend -
 nimmt ihren Platz am
 Fuße des Tisches ein

(Es herrscht Totenstille im Saal)

da tönt in das Schweigen ein leiser - doch scharfer
 und anhaltender knirschender Ton - aus allen
 Ecken des Saales

misterioso

ad. lib. — wie Zunge

Scene ⑨

langsam (accel. + cresc.
 beginnend

(Cresc.)

(Hopp - Frosch - tanzt wieder | erzählt von Maskerade) - fünf Fest -
 - (mit Verkleidung (als Onang Utans))

grotesk (skurril) - Allegretto -

Handwritten musical score for the first system, featuring a treble and bass clef, a 2/4 time signature, and various notes and rests. The score includes dynamic markings like 'p' and 'f', and some annotations like '5/8' and '8'.

Handwritten musical score for the second system, continuing the piece with treble and bass clefs, a 2/4 time signature, and various notes and rests. There are dynamic markings like 'p' and 'f', and some annotations like '5/8' and '8'.

(allmählich tanzen auch der König + seine 7 Minister
 von Begeisterung - mit ...)

Handwritten musical score for the third system, featuring a treble and bass clef, a 2/4 time signature, and various notes and rests. There are dynamic markings like 'p' and 'f', and some annotations like '5/8' and '8'.

Handwritten musical score for the fourth system, featuring a treble and bass clef, a 2/4 time signature, and various notes and rests. There are dynamic markings like 'p' and 'f', and some annotations like '5/8' and '8'.

parcours... (frei -

Handwritten musical score for the first system. It consists of two staves: a piano part on the left and a violin part on the right. The piano part begins with a dynamic marking of *f* and includes several notes with accents. The violin part starts with a key signature of one flat and includes a section marked *ff* with a circled *ff* and the instruction "mit - drei". A time signature of $\frac{3}{4}$ is indicated. The system concludes with a double bar line.

Tempo (Allegretto) - sempre accel. + cresc.

Handwritten musical score for the second system. It features piano and violin parts. The piano part is in $\frac{2}{4}$ time and contains several circled annotations. The violin part also includes circled annotations and dynamic markings. The system ends with a double bar line.

Handwritten musical score for the third system, primarily focusing on the violin part. It shows several measures of music with various notes, rests, and dynamic markings. The system concludes with a double bar line.

Handwritten musical score for the fourth system, primarily focusing on the piano part. It shows several measures of music with various notes, rests, and dynamic markings. The system concludes with a double bar line.

(immer turbulenter)

accel. →

ff

pp - rasch - (Tanz (Hopp-Frosch - König-Minister - (Häfflinge)
(bei Dal 5 #)

ff

Scene 10

Handwritten musical notation for the first system. The treble clef part consists of two measures of sixteenth-note runs, followed by a measure with a fermata and a final measure with a fermata. The bass clef part consists of four quarter notes in the first measure, followed by a measure with a fermata and a final measure with a fermata.

Handwritten musical notation for the second system. The treble clef part has four measures of eighth-note patterns with accents. The bass clef part has four measures of quarter notes with accents, including a fermata in the second measure.

Handwritten musical notation for the third system. The treble clef part has four measures of quarter notes with accents. The bass clef part has four measures of quarter notes, including a fermata in the second measure.

Handwritten musical notation for the fourth system. The treble clef part has four measures of eighth-note patterns with accents. The bass clef part has four measures of eighth-note patterns, including a fermata in the second measure.

Handwritten musical notation for the first system, featuring a treble clef with a circled *ff* dynamic marking and a bass clef with a circled *ff* dynamic marking. The music consists of four measures with various notes, rests, and slurs.

Handwritten musical notation for the second system, featuring a treble clef with a circled *f* dynamic marking and a bass clef with a circled *ff* dynamic marking. The music consists of four measures with various notes, rests, and slurs.

Handwritten musical notation for the third system, featuring a treble clef with a circled *f* dynamic marking and a bass clef with a circled *ff* dynamic marking. The music consists of four measures with various notes, rests, and slurs.

Handwritten musical notation for the fourth system, featuring a treble clef with a circled *ff* dynamic marking and a bass clef with a circled *ff* dynamic marking. The music consists of four measures with various notes, rests, and slurs.

1.

stin

2. (alle - Begeisterung - turbulent...)

ff

Handwritten musical notation for the first system, measures 1-3. The treble clef part has notes with accents and slurs. The bass clef part has chords with stems pointing up.

Handwritten musical notation for the second system, measures 4-6. The treble clef part has notes with accents and slurs. The bass clef part has chords with stems pointing up.

Handwritten musical notation for the third system, measures 7-9. The treble clef part has notes with accents and slurs. The bass clef part has chords with stems pointing up.

Handwritten musical notation for the fourth system, measures 10-12. The treble clef part has notes with accents and slurs. The bass clef part has chords with stems pointing up.

Handwritten musical notation for the first system, featuring a treble and bass clef with various notes and rests.

Handwritten musical notation for the second system, including a circled 'III' in the bass clef and various rhythmic markings.

sehr breit (aber nicht schleppend) appassionata

Handwritten musical notation for the third system, starting with a circled '(5)' and a '6/8' time signature.

Handwritten musical notation for the fourth system, including the instruction '(poco rit ----)'.

allmählich

(es wird finster — auf die Bühne —

Scene 11

Pause (Umbau) —

Ein großer Saal — in dem das Maskenfest stattfinden wird.)
(Mittelpunkt — ein großer Kronleuchter — der an einer
Kette von der Mitte des Kuppelfensters hängt —
(und mittels eines Gegengewichtes herabgelassen und wieder
hinaufgezogen werden kann.)

(große Maskengesellschaft) —

(ganze Beschreibung im Originaltext) beiliegend.

Polaris (♩) — allmählich Vorhang auf. —

rascher werden. — — — poco rit.

Bühne offen ----

Maestoso (

Handwritten musical notation for the first system. It features a treble clef and a bass clef. The key signature is two sharps (F# and C#), indicated by a circled 'F#' and a sharp sign. The time signature is 3/4. The notation includes eighth notes with accents and slurs, and chordal structures with brackets. The first measure has a circled 'F#' and a sharp sign. The second measure has a circled '3' over a '4'.

Handwritten musical notation for the second system, continuing the piece. It features a treble clef and a bass clef. The notation includes eighth notes with accents and slurs, and chordal structures with brackets. The first measure has a circled '3' over a '4'.

Handwritten musical notation for the third system, continuing the piece. It features a treble clef and a bass clef. The notation includes eighth notes with accents and slurs, and chordal structures with brackets.

Handwritten musical notation for the fourth system, continuing the piece. It features a treble clef and a bass clef. The key signature changes to two flats (Bb and Eb). The notation includes eighth notes with accents and slurs, and chordal structures with brackets.

Handwritten musical notation for the first system. The treble staff contains a series of notes with accents and slurs, followed by rests. The bass staff contains notes with accents and slurs, followed by a long rest. Dynamic markings include *mf* and *f*.

Handwritten musical notation for the second system. The treble staff contains notes with accents and slurs, followed by rests. The bass staff contains notes with accents and slurs, followed by a long rest. Dynamic markings include *mf* and *f*.

Handwritten musical notation for the third system. The treble staff contains notes with accents and slurs, followed by rests. The bass staff contains notes with accents and slurs, followed by a long rest. Dynamic markings include *mf* and *f*. The text "poco rit" is written above the staff.

Tempo (Walzer) (arg)

Handwritten musical notation for the fourth system. The treble staff contains notes with accents and slurs, followed by rests. The bass staff contains notes with accents and slurs, followed by a long rest. Dynamic markings include *mf* and *f*. The tempo marking "Tempo (Walzer) (arg)" is written above the staff.

Handwritten musical notation for the first system, featuring a treble clef and a bass clef. The treble staff contains a melodic line with notes G4, A4, B4, C5, and D5, with various accidentals and slurs. The bass staff contains a bass line with notes G3, A3, B3, and C4, also with accidentals and slurs.

Handwritten musical notation for the second system, featuring a treble clef and a bass clef. The treble staff contains a melodic line with notes G4, A4, B4, C5, and D5, with various accidentals and slurs. The bass staff contains a bass line with notes G3, A3, B3, and C4, also with accidentals and slurs.

Handwritten musical notation for the third system, featuring a treble clef and a bass clef. The treble staff contains a melodic line with notes G4, A4, B4, C5, and D5, with various accidentals and slurs. The bass staff contains a bass line with notes G3, A3, B3, and C4, also with accidentals and slurs.

Handwritten musical notation for the fourth system, featuring a treble clef and a bass clef. The treble staff contains a melodic line with notes G4, A4, B4, C5, and D5, with various accidentals and slurs. The bass staff contains a bass line with notes G3, A3, B3, and C4, also with accidentals and slurs.

Handwritten musical notation for the first system. It consists of two staves. The upper staff has a treble clef and a circled '5'. It contains a series of notes with slurs and accents, including a large slur over the first two measures. The lower staff has a bass clef and contains notes with slurs and accents.

Handwritten musical notation for the second system. It consists of two staves. The upper staff has a treble clef and contains notes with slurs and accents. The lower staff has a bass clef and contains notes with slurs and accents.

Handwritten musical notation for the third system. It consists of two staves. The upper staff has a treble clef and a circled '5'. It contains notes with slurs and accents, including a large slur over the first two measures. The lower staff has a bass clef and contains notes with slurs and accents.

poco rit

Handwritten musical notation for the fourth system. It consists of two staves. The upper staff has a treble clef and a circled '5'. It contains notes with slurs and accents, including a large slur over the first two measures. The lower staff has a bass clef and contains notes with slurs and accents.

Handwritten musical score for the first system. It consists of three staves. The top staff has a treble clef and contains notes with various accidentals (sharps, naturals) and a slur. The middle staff has a bass clef and contains notes with accidentals and a slur. The bottom staff has a treble clef and contains notes with accidentals. There are dynamic markings like f and mf and a circled '3'.

Handwritten musical score for the second system. It consists of three staves. The top staff has a treble clef and contains notes with accidentals and a slur. The middle staff has a bass clef and contains notes with accidentals and a slur. The bottom staff has a treble clef and contains notes with accidentals. There are dynamic markings like f and mf .

Handwritten musical score for the third system. It consists of three staves. The top staff has a treble clef and contains notes with accidentals and a slur. The middle staff has a bass clef and contains notes with accidentals and a slur. The bottom staff has a treble clef and contains notes with accidentals. There are dynamic markings like f and mf , and circled symbols.

Handwritten musical notation for the first system. The top staff is in treble clef with a key signature of one flat (B-flat). It contains several notes with accents and slurs, including a circled 'f' dynamic marking. The bottom staff shows chordal accompaniment with notes and rests.

Handwritten musical notation for the second system. The top staff continues with notes and slurs. A circled 'f' dynamic marking is present. The bottom staff shows chordal accompaniment with notes and rests.

Handwritten musical notation for the third system. The top staff features notes with accents and slurs. The bottom staff shows chordal accompaniment with notes and rests.

Handwritten musical notation for the first system. It consists of two staves. The upper staff has a treble clef and contains several notes with accidentals (sharps and flats) and a slur. The lower staff has a bass clef and contains notes with accidentals. A circled square symbol is located at the end of the system.

Handwritten musical notation for the second system. It consists of two staves. The upper staff has a treble clef and contains notes with accidentals and a slur. The lower staff has a bass clef and contains notes with accidentals. A circled 'dim' marking is present on the left side.

Handwritten musical notation for the third system. It consists of two staves. The upper staff has a treble clef and contains notes with accidentals and a slur. The lower staff has a bass clef and contains notes with accidentals.

poco rit - - - - -

Handwritten musical notation for the fourth system. It consists of two staves. The upper staff has a treble clef and contains notes with accidentals and a slur. The lower staff has a bass clef and contains notes with accidentals. A circled 'p' marking is present on the right side.

Tempo (Menuett) grotesk)

rit + dim

Tempo (Mouvet)

Handwritten musical score for "Tempo (Mouvet)". It consists of two staves. The top staff is in treble clef and the bottom in bass clef. The key signature has one sharp (F#). The first measure is marked "Café" and the second "acc.". The music features chords and melodic lines with various dynamics and articulations.

acc. = Valse tempo

Handwritten musical score for "acc. = Valse tempo". It consists of two staves. The top staff is in treble clef and the bottom in bass clef. The key signature has two sharps (F# and C#). The time signature is 3/4. The music features chords and melodic lines with various dynamics and articulations.


Presto

Handwritten musical score for "Presto". It consists of two staves. The top staff is in treble clef and the bottom in bass clef. The key signature has three sharps (F#, C#, G#). The music features chords and melodic lines with various dynamics and articulations.

gibt + dir - - -

Tempo (Mauvett)

Tempo (Walzer) plott) große Steigerung)

 Immer turbulenter (hektischer) !!

Handwritten musical score for the first system. The treble clef part starts with a key signature of one sharp (F#) and contains several notes with accents and slurs. The bass clef part has a key signature of two sharps (F# and C#) and includes a dynamic marking 'fff'.

Handwritten musical score for the second system. The treble clef part continues with notes and slurs, showing a key signature change to two sharps. The bass clef part has a key signature of two sharps and includes a dynamic marking 'ff'.

Handwritten musical score for the third system. The treble clef part features a key signature of two flats (Bb and Eb) and includes a dynamic marking 'ff'. The bass clef part has a key signature of two flats and includes a dynamic marking 'ff'.

(Mitternachtsglocken beginnen zu läuten...)

Handwritten musical score for the fourth system. The treble clef part has a key signature of two flats and includes a dynamic marking 'ff'. The bass clef part has a key signature of two flats and includes a dynamic marking 'ff'.

Handwritten musical score for the first system. The treble clef staff contains a sequence of notes: G4, A4, B4, C5, D5, E5, F5, G5, with a slur over the last four notes. The bass clef staff contains notes: G3, A3, B3, C4, D4, E4, F4, G4, with a slur over the last four notes. There are various rests and dynamic markings throughout.

(die Orang Utans (König + 7 Minister verkleidet) stürzen (stolpern in den Saal) viele trachten aus den Saal zu kommen) aber die Türen hatte Herr Frost gleich wieder versperrt -

Handwritten musical score for the second system. It begins with a circled **ff** dynamic marking and a **2/2** time signature. The treble clef staff has notes: G4, A4, B4, C5, D5, E5, F5, G5. The bass clef staff has notes: G3, A3, B3, C4, D4, E4, F4, G4. The word **Presto** is written below the bass clef staff.

Handwritten musical score for the third system. The treble clef staff continues with notes: G4, A4, B4, C5, D5, E5, F5, G5. The bass clef staff continues with notes: G3, A3, B3, C4, D4, E4, F4, G4. There are various rests and dynamic markings throughout.

Handwritten musical score for the fourth system. The treble clef staff has notes: G4, A4, B4, C5, D5, E5, F5, G5. The bass clef staff has notes: G3, A3, B3, C4, D4, E4, F4, G4. There are various rests and dynamic markings throughout.

(das Gedränge wird lebensgefährlich) Langsam senkt sich der Kronleuchter auf (die Erde - den Erdboden)

(af2) appassionata -

(af2)

Handwritten musical score for the first system, featuring a treble clef, a 3/2 time signature, and a key signature of one sharp (F#). The music consists of two staves with various notes, rests, and dynamic markings.

Handwritten musical score for the second system, continuing the piece with two staves and various musical notations.

Handwritten musical score for the third system, including a circled '3' and a circled 'F#', indicating a 3/2 time signature and a key signature of one sharp.

Handwritten musical score for the fourth system, including a circled '3' and a circled 'F#', indicating a 3/2 time signature and a key signature of one sharp.

(Hopp Frosch -ocklieft die Kette der Affen) an den Krouleuchter ^{en}
~~(wie ein ungeschickter Hand wird der Leuchter (mit den Affen~~

~~3/4~~

Prestissimo

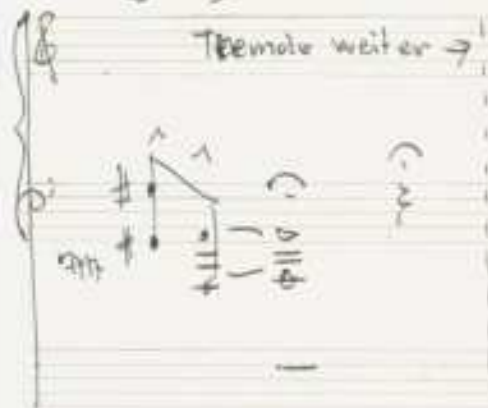
breit (pesante)

die Maskengäste beginnen allmählich zu lachen an -----

(Über Lautsprecher = Stimme des Zwerges)

breit (frei) — Schreiend — Kriechend :

Tremolo bleibt bis ♯



Überläßt sie mir; Überläßt sie mir —
ich glaube — ich kenne sie, — Wenn ich sie mir
nur einmal recht anschauen könnte, ich
würde euch gleich sagen — wer sie sind!

(und über die Köpfe der Menge kriechend, gelangt er zur
Sax?wand, nahm einen der Karyatiden die Fackel aus der
Hand, kehrt zur Mitte zurück und springt mit Affen =
Geschwindigkeit dem König auf die Schulter und von der
von der Kette hinauf. Über den Orang - Utans senkt
er seine Fackel, leuchtet ihnen ins Antlitz und
schreit von neuem: Ich werde bald herausziehen — wer
sie sind! " — (Tremolo wacke chaos, dann aus ♯)

Szene 12

(Alle, auch die Affen — schütteln sich vor Lachen -

großente (Moderato) derb -



accel.

(Hopp-Frosch läßt einen Pfiff ertönen - das Netz mit den zappelnden Affen - (oben darauf der Zwerg) wird in halbe Höhe des Saales - rasch hinauf gezogen -

Presto

(auf 1) (hinauf mit dem Netz)

Pesante

lange Totenstille im Saal) es ertönt wieder ein
 leises - scharfes -
 keinschendes Geräusch -

5. P.

Lento (Langsam senkt er die Fackel -

(bis die Affen — lichterloh — brennen —

(sehr breit) (passionato)

(es wird allmählich dunkel im See) —

nur die (Fackel) mit den Affen leuchtet purpurrot —

(Hopp-Frosch läßt sich an einem Seil - rasch herab - und verschwindet -)

Presto

Vorhang - fällt

(großes
Sitz.....)

1980
Adolf Schreier