

Variationen in 2 Teilen

für Klavier

A. Scherbaum

1976

F 153 Scherbaum 1128

MUSIKSAMMLUNG
ÖSTERR.
NATIONALBIBLIOTHEK

Bass clef: ruhig fließend (p) Teil ①

Handwritten musical score for piano, consisting of five systems of staves. The score includes various musical notations such as notes, rests, accidentals, and dynamic markings.

System 1: Includes dynamic marking *pp* and a tempo/rhythm marking $\frac{2}{8}$. Pedal markings include *Pedal* and *Pedal aus*. Circled numbers 1 and 2 are present.

System 2: Includes circled number 3.

System 3: Includes circled number 4.

System 4: Includes dynamic marking *p* and circled number 5. Pedal markings include *Pedal* and *Pedal aus*. A *(rit)* marking is also present.

The score concludes with a double bar line and a circled number 5.

etwas flüssiger (6)

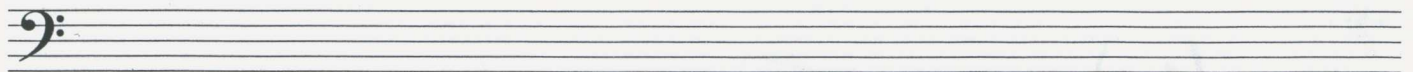
Musical notation for measures 6 and 7. The system consists of two staves. The upper staff is in treble clef with a key signature of one sharp (F#) and a 3/8 time signature. It contains triplet chords and eighth notes. The lower staff is in bass clef with a key signature of one sharp (F#) and a 3/8 time signature. It contains eighth notes and rests. Pedal markings include 'Ped. pp' and 'Ped.'. A circled number '6' is at the end of the system.

Musical notation for measures 8 and 9. The system consists of two staves. The upper staff is in treble clef with a key signature of one sharp (F#) and a 3/8 time signature. It contains triplet chords and eighth notes. The lower staff is in bass clef with a key signature of one sharp (F#) and a 3/8 time signature. It contains eighth notes and rests. Pedal markings include 'Ped.'. A circled number '7' is at the end of the system.

Musical notation for measures 10 and 11. The system consists of two staves. The upper staff is in treble clef with a key signature of one sharp (F#) and a 3/8 time signature. It contains a wavy line indicating a tremolo or rapid oscillation. The lower staff is in bass clef with a key signature of one sharp (F#) and a 3/8 time signature. It contains eighth notes and rests. Pedal markings include 'Ped. pp' and 'Ped.'. Tempo markings include 'Tempo 1.', 'Anfang', 'poco rit...', and 'pp'. A circled number '8' is at the end of the system.

Musical notation for measures 12 and 13. The system consists of two staves. The upper staff is in treble clef with a key signature of one sharp (F#) and a 3/8 time signature. It contains eighth notes and rests. The lower staff is in bass clef with a key signature of one sharp (F#) and a 3/8 time signature. It contains eighth notes and rests. Pedal markings include 'Ped.'. Tempo markings include 'A Tempo'. A circled number '9' is at the end of the system.

Musical notation for measures 14 and 15. The system consists of two staves. The upper staff is in treble clef with a key signature of one sharp (F#) and a 3/8 time signature. It contains triplet chords and eighth notes. The lower staff is in bass clef with a key signature of one sharp (F#) and a 3/8 time signature. It contains eighth notes and rests. Pedal markings include 'Ped.', 'Pedale', and '(poco rit...)'. A circled number '9' is at the end of the system.

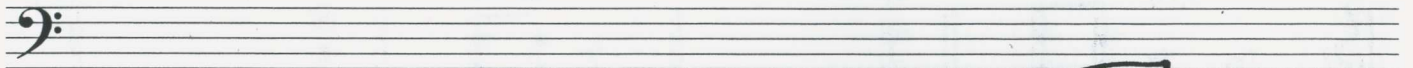


Adagio

10

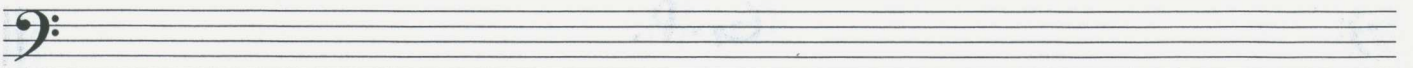
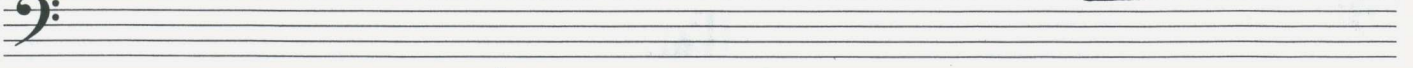
Handwritten musical notation for measures 10 and 11. The system consists of two staves. The upper staff is in bass clef and contains a whole note chord with a sharp sign and a circled 'p'. The lower staff is in bass clef and contains a whole note chord with a sharp sign and a circled 'p'. There are various annotations including accents, slurs, and dynamic markings.

Handwritten musical notation for measures 10 and 11. The system consists of two staves. The upper staff is in bass clef and contains a whole note chord with a sharp sign and a circled 'p'. The lower staff is in bass clef and contains a whole note chord with a sharp sign and a circled 'p'. There are various annotations including accents, slurs, and dynamic markings.



Handwritten musical notation for measures 12 and 13. The system consists of two staves. The upper staff is in treble clef and contains a whole note chord with a sharp sign and a circled 'pp'. The lower staff is in bass clef and contains a whole note chord with a sharp sign and a circled 'pp'. There are various annotations including accents, slurs, and dynamic markings.

Handwritten musical notation for measures 12 and 13. The system consists of two staves. The upper staff is in treble clef and contains a whole note chord with a sharp sign and a circled 'pp'. The lower staff is in bass clef and contains a whole note chord with a sharp sign and a circled 'pp'. There are various annotations including accents, slurs, and dynamic markings.



Handwritten musical score for measures 14 and 15. The system includes a bass clef staff with the instruction *legg. (frei)* and a piano (*pp*) dynamic marking. The right hand part features a melodic line with a long slur over measures 14 and 15. The left hand part consists of chords and single notes, with a *Ped.* marking. Measure numbers 14 and 15 are circled at the end of the system.

Handwritten musical score for measures 15 and 16. The system includes a bass clef staff with a circled measure number 15 and a *Ped.* marking. The right hand part continues the melodic line from the previous system. The left hand part features chords and single notes, with a *Ped.* marking. Measure numbers 15 and 16 are circled at the end of the system.

Handwritten musical score for measures 16 and 17. The system includes a bass clef staff with a circled measure number 16 and a *pp* dynamic marking. The right hand part features a melodic line with a circled measure number 16. The left hand part consists of chords and single notes, with a *Ped.* marking. Measure numbers 16 and 17 are circled at the end of the system.

Handwritten musical score for measures 17 and 18. The system includes a bass clef staff with a circled measure number 17 and a *mf* dynamic marking. The right hand part features a melodic line with a circled measure number 17. The left hand part consists of chords and single notes, with a *Ped.* marking. Measure numbers 17 and 18 are circled at the end of the system.

G.P. ||

pesante (♩) Lento

gr. rit.....

ruhige (P)

5/8 pp

Pedal

22

23

gr. rit.

24

lunga

ppp

Presto

Teil 2.

Handwritten musical notation for measures 1-3. Treble clef, key signature of one sharp (F#), common time. Dynamics include pp and p. Accents are present on notes.

Handwritten musical notation for measures 4-6. Treble clef, key signature of one sharp (F#), common time. Dynamics include mf and ff. Measure numbers 25 and 26 are circled.

Handwritten musical notation for measures 7-9. Treble clef, key signature of one sharp (F#), common time. Slurs and accents are used.

Handwritten musical notation for measures 10-12. Treble clef, key signature of one sharp (F#), common time. Measure number 27 is circled.

Handwritten musical notation for measures 13-15. Treble clef, key signature of one sharp (F#), common time. Slurs and accents are used.

Handwritten musical notation for measures 16-18. Treble clef, key signature of one sharp (F#), common time. Dynamics include dim and p. Measure number 28 is circled.

Handwritten musical score for piano, consisting of six systems of staves. The score includes treble and bass clefs, various musical notations such as notes, rests, and slurs, and performance instructions like "Pedal", "p", "f", and "3/4". Measure numbers 29, 30, 31, and 32 are circled. The notation is dense and includes many accidentals and dynamic markings.

Handwritten musical score for piano, consisting of six systems of staves. The notation includes notes, rests, and various performance markings such as dynamics (p, f, ff, pp), accents, and phrasing slurs. Measure numbers 33, 34, 35, 36, and 37 are circled. The score is written in a key signature of one sharp (F#) and a 2/4 time signature.

System 1: Treble clef, notes with accents and slurs. Bass clef, notes with slurs. Dynamics: *p*.

System 2: Treble clef, notes with accents and slurs. Bass clef, notes with slurs. Dynamics: *p*, *f*. Measure 33 circled.

System 3: Treble clef, notes with slurs. Bass clef, notes with slurs. Dynamics: *pp*. Pedal markings: Pedal =, Ped. Measure 34 circled.

System 4: Treble clef, notes with slurs. Bass clef, notes with slurs. Dynamics: *ff*. Pedal markings: Ped., Ped. Measure 35 circled.

System 5: Treble clef, notes with slurs. Bass clef, notes with slurs. Dynamics: *ff*. Pedal markings: Ped. Measure 36 circled.

System 6: Treble clef, notes with slurs. Bass clef, notes with slurs. Dynamics: *ff*, *p*. Pedal markings: Ped. Measure 37 circled.

Bass clef line

Handwritten musical notation for measures 37-38. Treble clef starts with *pp*. Bass clef has accents and slurs. Measure 38 is circled.

Handwritten musical notation for measures 39-40. Treble clef has a circled *p*. Bass clef has accents and slurs. Measure 40 is circled.

Handwritten musical notation for measures 41-42. Treble clef has accents. Bass clef has accents and slurs.

Handwritten musical notation for measures 43-44. Treble clef has accents. Bass clef has accents and slurs. Measure 44 is circled.

Bass clef line with the instruction *(2te x poco rit)*

Handwritten musical notation for measures 45-46. Treble clef has accents. Bass clef has accents and slurs. Measure 46 is circled.

Presto Tempo 1.

Handwritten musical notation for the first system, measures 38-40. The system includes a treble clef with a key signature of one sharp (F#) and a common time signature (C). The bass clef part features a key signature of one flat (Bb) and a common time signature (C). Dynamics include *pp* and *p*. Accents (^) are placed over many notes. Measure 40 ends with a double bar line and repeat dots.

Handwritten musical notation for the second system, measures 41-42. Measure 41 is circled. The treble clef part has a key signature of one sharp (F#) and a common time signature (C). The bass clef part has a key signature of one flat (Bb) and a common time signature (C). Dynamics include *mf*, *f*, and *ff*. Measure 42 ends with a double bar line and repeat dots.

Handwritten musical notation for the third system, measures 43-44. The treble clef part has a key signature of one sharp (F#) and a common time signature (C). The bass clef part has a key signature of one flat (Bb) and a common time signature (C). Measure 44 ends with a double bar line and repeat dots.

Handwritten musical notation for the fourth system, measures 45-46. The treble clef part has a key signature of one sharp (F#) and a common time signature (C). The bass clef part has a key signature of one flat (Bb) and a common time signature (C). Measure 46 ends with a double bar line and repeat dots.

Handwritten musical notation for the fifth system, measures 47-48. The treble clef part has a key signature of one sharp (F#) and a common time signature (C). The bass clef part has a key signature of one flat (Bb) and a common time signature (C). Measure 48 ends with a double bar line and repeat dots.

Handwritten musical notation for the sixth system, measures 49-50. The treble clef part has a key signature of one sharp (F#) and a common time signature (C). The bass clef part has a key signature of one flat (Bb) and a common time signature (C). Dynamics include *dim*, *mf*, and *p*. Measure 50 ends with a double bar line and repeat dots.

reiner-notenschreib-papier, 12 systeme, 0301

Handwritten musical score for piano, consisting of six systems of staves. The notation includes treble and bass clefs, various notes, rests, and dynamic markings such as *p*, *f*, and *ff*. Pedal markings are present throughout, including "Pedal" and "Ped." with arrows indicating the timing of the pedal. Measure numbers 46, 47, 48, and 49 are circled in the right margin. The score features complex rhythmic patterns, including sixteenth and thirty-second notes, and rests. A 3/4 time signature is visible in the fourth system. The piece concludes with a final chord and a fermata.

Handwritten musical notation for measures 48-49. The system consists of two staves. The right staff contains chords with accents and dynamic markings like *mf*. The left staff contains a melodic line with slurs and accents.

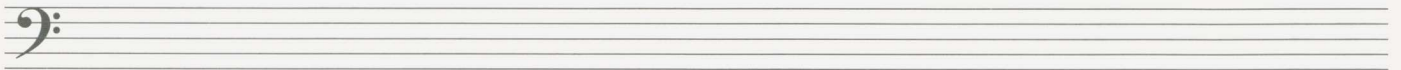
Handwritten musical notation for measures 50-52. Measure 50 is circled. The right staff has chords with accents and dynamics like *p* and *f*. The left staff has a melodic line with slurs and accents.

Handwritten musical notation for measures 51-52. Measure 51 is circled. The right staff has chords with accents and dynamics like *pp*. The left staff has a melodic line with slurs and accents. The word "Pedal" is written below the left staff.

Handwritten musical notation for measures 52-53. Measure 52 is circled. The right staff has chords with accents and dynamics like *f*. The left staff has a melodic line with slurs and accents. The word "Pedal" is written below the left staff.

Handwritten musical notation for measures 53-54. The right staff has chords with accents and dynamics like *ff*. The left staff has a melodic line with slurs and accents. The word "Pedal" is written below the left staff.

Handwritten musical notation for measures 54-55. Measure 54 is circled. The right staff has chords with accents and dynamics like *ff*. The left staff has a melodic line with slurs and accents. The word "Pedal" is written below the left staff.

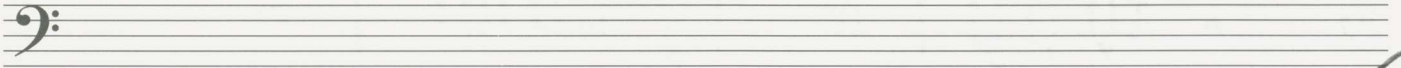


Handwritten musical notation for measures 53 and 54. The system consists of two staves: a treble clef staff and a bass clef staff. The treble staff begins with a piano (*pp*) dynamic marking and contains a melodic line with slurs and ties. The bass staff contains a bass line with slurs and ties. Measure 54 is circled at the end of the system.

Handwritten musical notation for measures 55 and 56. The system consists of two staves: a treble clef staff and a bass clef staff. The treble staff contains a melodic line with slurs and ties. The bass staff contains a bass line with slurs and ties. Measure 56 is circled at the end of the system.

Handwritten musical notation for measures 57 and 58. The system consists of two staves: a treble clef staff and a bass clef staff. The treble staff contains a melodic line with slurs and ties. The bass staff contains a bass line with slurs and ties. Measure 58 is circled at the end of the system.

Handwritten musical notation for measures 59 and 60. The system consists of two staves: a treble clef staff and a bass clef staff. The treble staff contains a melodic line with slurs and ties. The bass staff contains a bass line with slurs and ties. Measure 60 is circled at the end of the system.



Handwritten musical notation for measures 61 and 62. The system consists of two staves: a treble clef staff and a bass clef staff. The treble staff contains a melodic line with slurs and ties. The bass staff contains a bass line with slurs and ties. Measure 62 is circled at the end of the system.

Handwritten musical score for the first system, measures 55-56. The system consists of two staves. The left staff is in bass clef with a 2/2 time signature. The right staff is in bass clef. The music features complex chords and melodic lines with accents (^) and a fortissimo (*ff*) dynamic marking.

Handwritten musical score for the second system, measures 57-58. The system consists of two staves. The left staff is in bass clef, and the right staff is in bass clef. Measure 57 is circled. The music continues with complex harmonic structures and melodic fragments.

Handwritten musical score for the third system, measures 59-60. The system consists of two staves. The left staff is in bass clef, and the right staff is in treble clef. Measure 58 is circled. The music features a mix of bass and treble clefs, with complex chords and melodic lines.

Handwritten musical score for the fourth system, measures 61-62. The system consists of two staves. The left staff is in treble clef, and the right staff is in bass clef. Measure 59 is circled. The music continues with complex harmonic structures and melodic fragments.

Handwritten musical score for the fifth system, measures 63-64. The system consists of two staves. The left staff is in treble clef, and the right staff is in bass clef. Measure 60 is circled. The music features a mix of bass and treble clefs, with complex chords and melodic lines. Dynamics include *mf*, *fff*, *dim*, and *pp*.

Handwritten musical score for the sixth system, measures 65-66. The system consists of two staves. The left staff is in bass clef, and the right staff is in bass clef. The music concludes with simple harmonic structures.

Handwritten musical notation on a grand staff (treble and bass clefs). The notation includes a double bar line, a fermata, and notes with slurs. Annotations include "Tempo" above the first staff, "G. P." in the left margin, "Lunga" above the second staff, and "Fine" above the end of the piece. There are also some scribbles and a wavy line at the end of the piece.

Eight empty musical staves, each starting with a bass clef, arranged vertically on the page.