

Seite für Picus
1876

Alois Schwan

Notenheft

SUITE

FÜR

PIANO

1976

Inge Adamiker-Scherbaum

Teil ①

langsam beginnen (Steigerung bis Prestissimo) *ppp*

Handwritten musical notation for the first system, including a grand staff with treble and bass clefs, a 2/4 time signature, a key signature of one flat, and dynamic markings 'pp' and 'ppp'. The notation includes quarter notes and eighth notes with stems, and whole notes in the bass clef.

Handwritten musical notation for the second system, continuing the grand staff from the first system. The notation includes eighth notes, quarter notes, and whole notes with stems.

Handwritten musical notation for the third system, continuing the grand staff from the second system. The notation includes quarter notes, eighth notes, and whole notes with stems.

Handwritten musical notation for the first system. The treble clef staff contains a sequence of notes: a whole rest, followed by a quarter note G4, a quarter note A4, a quarter note B4, a quarter note C5, a quarter note B4, a quarter note A4, and a quarter note G4. The bass clef staff contains a whole rest, followed by a quarter note B3, a quarter note C4, a quarter note D4, and a quarter note E4. A circled '2' is at the end of the system.

Handwritten musical notation for the second system. The treble clef staff starts with a fermata over a whole note G4, followed by a quarter note A4, a quarter note B4, and a quarter note C5. The bass clef staff contains a whole rest, followed by a quarter note B3, a quarter note C4, a quarter note D4, and a quarter note E4. A circled '2' is at the end of the system.

Handwritten musical notation for the third system. The treble clef staff contains a sequence of notes: a whole rest, followed by a quarter note G4, a quarter note A4, a quarter note B4, a quarter note C5, a quarter note B4, a quarter note A4, and a quarter note G4. The bass clef staff contains a whole rest, followed by a quarter note B3, a quarter note C4, a quarter note D4, and a quarter note E4. A circled '3' is at the end of the system.

Handwritten musical notation for the first system, measures 1-3. The system consists of two staves. The right staff is in treble clef and the left staff is in bass clef. Measure 1 starts with a circled 'f' dynamic marking. Above the first measure, there is a 'b' with a 'u' underneath it. Above the second measure, there is a sharp sign (#) with a 'u' underneath it. The notation includes various note values, rests, and slurs.

Handwritten musical notation for the second system, measures 4-6. The system consists of two staves. The right staff is in treble clef and the left staff is in bass clef. Measure 6 ends with a circled '4' marking. The notation includes various note values, rests, and slurs.

Handwritten musical notation for the third system, measures 7-9. The system consists of two staves. The right staff is in treble clef and the left staff is in bass clef. Measure 7 starts with a circled 'ff' dynamic marking. The notation includes various note values, rests, and slurs.

Allegro con brio (molto accel. + cresc.)

Handwritten musical notation for the first system. It consists of a treble clef staff and a bass clef staff. The treble staff begins with a circled 'ff' dynamic marking. The first measure contains a quarter note with an accent (^) and a sharp sign (#). The second measure contains a quarter note with an accent (^) and a flat sign (b). The third measure contains a quarter note with an accent (^) and a sharp sign (#). The fourth measure contains a quarter note with an accent (^) and a sharp sign (#). The bass staff contains two chords, each with an accent (^) above it. The first chord is a triad of notes, and the second is a triad of notes. The system concludes with a fermata over the final measure.

Handwritten musical notation for the second system. It consists of a treble clef staff and a bass clef staff. The treble staff begins with a quarter note with an accent (^) and a sharp sign (#). The second measure contains a quarter note with an accent (^) and a flat sign (b). The third measure contains a quarter note with an accent (^) and a sharp sign (#). The fourth measure contains a quarter note with an accent (^) and a sharp sign (#). The bass staff contains two chords, each with an accent (^) above it. The first chord is a triad of notes, and the second is a triad of notes. The system concludes with a fermata over the final measure.

Handwritten musical notation for the third system. It consists of a treble clef staff and a bass clef staff. The treble staff begins with a quarter note with an accent (^) and a sharp sign (#). The second measure contains a quarter note with an accent (^) and a sharp sign (#). The third measure contains a quarter note with an accent (^) and a sharp sign (#). The fourth measure contains a quarter note with an accent (^) and a sharp sign (#). The bass staff contains two chords, each with an accent (^) above it. The first chord is a triad of notes, and the second is a triad of notes. The system concludes with a fermata over the final measure.

Handwritten musical notation for the first system. The treble clef staff contains notes with accents and a fermata. The bass clef staff contains chords with plus signs. Above the treble staff, there are handwritten accents and a tilde symbol.

Prestissimo $\wedge \wedge \wedge \wedge$

Handwritten musical notation for the second system, marked "Prestissimo". It features a circled sharp sign in the treble clef, plus signs in the bass clef, and various rhythmic markings like slurs and accents.

Handwritten musical notation for the third system, continuing the piece with complex rhythmic patterns and slurs in both staves.

(moder. accel.)

Teil 1B

schon ruhig

cresc.

Handwritten musical notation for the first system. The treble clef is on the top staff. The key signature is one flat (F), indicated by a circled 'F'. The music consists of a melodic line in the treble clef and a bass line in the bass clef. The melodic line starts with a quarter note G4, followed by a quarter note A4, a quarter note B4, and a quarter note C5. There are slurs over the first two notes and the last two notes. Dynamic markings include 'p' and 'pp'. A circled 'F' is written in the left margin.

Handwritten musical notation for the second system. The treble clef is on the top staff. The key signature is one flat (F), indicated by a circled 'F'. The music consists of a melodic line in the treble clef and a bass line in the bass clef. The melodic line has a quarter note G4, a quarter note A4, and a quarter note B4. There are slurs and dynamic markings. The bass line features chords with notes G2, B2, and D3. A circled 'F' is written in the left margin.

Handwritten musical notation for the third system. The treble clef is on the top staff. The key signature is one flat (F), indicated by a circled 'F'. The music consists of a melodic line in the treble clef and a bass line in the bass clef. The melodic line has a quarter note G4, a quarter note A4, and a quarter note B4. There are slurs and dynamic markings. The bass line features chords with notes G2, B2, and D3. A circled 'F' is written in the left margin. The text "(poco rit)" is written at the bottom of the system.

meno mosso

Handwritten musical notation for the first system. The treble staff contains notes with various accidentals (flats and naturals) and dynamic markings such as accents (^) and a hairpin (>). The bass staff contains notes with accidentals and dynamic markings. There are also some vertical lines and symbols between the staves.

lento

Handwritten musical notation for the second system. The treble staff begins with a circled key signature change to three sharps (F#, C#, G#). It contains notes with accidentals and dynamic markings. The word "din" is written between the staves. The bass staff contains notes with accidentals and dynamic markings.

(poco rit)

Handwritten musical notation for the third system. The treble staff contains notes with accidentals and dynamic markings, including a circled 'p' (piano). The bass staff contains notes with accidentals and dynamic markings. The system concludes with a double bar line and fermatas on both staves.

leuto gr. mit (din)

(pp) b b ppp

(Ped.) Ped. aus

folgt Teil 1

Satz [2] Teil [1]

sehr ruhig / frei

(orgäblend)

lento

Handwritten musical notation on two staves. The upper staff contains rhythmic markings (upbeats) and notes with stems. The lower staff contains notes with stems. A circled 'C' is present in the first measure of the upper staff.

Handwritten musical notation on two staves. The upper staff contains rhythmic markings and notes. The lower staff contains notes with stems. A circled 'C' is present in the first measure of the upper staff.

Handwritten musical notation on two staves. The upper staff is labeled "bweit (A) pesante" and contains notes with stems. The lower staff contains notes with stems. A circled 'C' is present in the first measure of the upper staff.

vorwärts →

Handwritten musical notation for the first system. The treble clef staff contains a sequence of notes with accents (^) above them. The bass clef staff contains a sequence of notes with a flat (b) below the first one. The system concludes with a double bar line.

vorwärts →

Handwritten musical notation for the second system. The treble clef staff begins with a sharp sign (#) and contains notes with accents (^). The bass clef staff contains notes with a flat (b) below the first one. The system ends with a double bar line.

Handwritten musical notation for the third system. The treble clef staff features complex chordal structures, including a circled '5i' marking. The bass clef staff contains notes with a flat (b) below the first one. The system ends with a double bar line.

(proceed with)

sehr ruhig \wedge \wedge \wedge \wedge \wedge \wedge \wedge

(rit) *(din)*

(paz frei)

FINE

sehr langsam (zart)

(p)

Pedal *(pp)*

(pp)

(pp)

Handwritten musical notation for the first system. The upper staff contains three chords, each with an accent (^) above it: $G\#4$, $G\#4$, and $G\#4$. The lower staff shows a sequence of notes with accents (^) above them, starting with a circled 'f' dynamic marking.

Handwritten musical notation for the second system. The upper staff contains three chords, each with an accent (^) above it: $G\#8$, $G\#8$, and $G\#8$. The lower staff shows a sequence of notes with accents (^) above them, starting with a circled 'f' dynamic marking.

Handwritten musical notation for the third system. The upper staff contains three chords, each with an accent (^) above it: $G\#6$, $G\#6$, and $G\#6$. The lower staff shows a sequence of notes with accents (^) above them, starting with a circled 'ff' dynamic marking.

(immer breiter)

(gut)

sehr appassionata (sehr energisch $\frac{4}{8}$) (fres)

Pedal

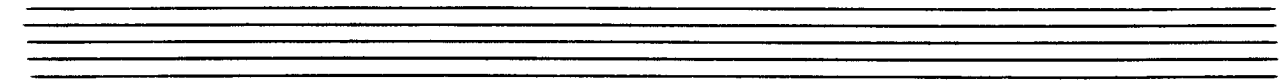
aus)

Pedal

Handwritten musical notation for the first system. The treble clef staff contains a circled '5' and several notes with accents. The bass clef staff has a sharp sign (#) and a '5' over a note. A large bracket spans the bottom of the system with the handwritten word '(aus)' written below it.

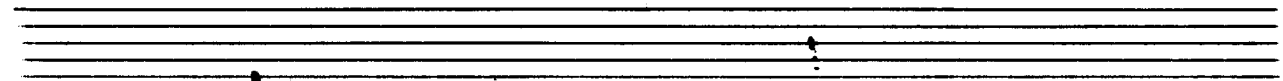
Handwritten musical notation for the second system. The treble clef staff shows notes with accents and a slur. The bass clef staff has a sharp sign (#) and a '5' over a note. A large bracket spans the bottom of the system.

Handwritten musical notation for the third system. It includes a 'Ped.' marking. The treble clef staff has notes with accents. The bass clef staff has a sharp sign (#) and a '5' over a note. A large bracket spans the bottom of the system with the handwritten word 'vorwärts' written below it. The word '(aus)' is also written at the end of the system.

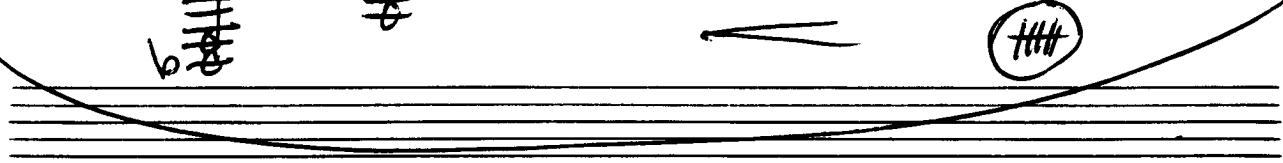


Alleg.

Pedal

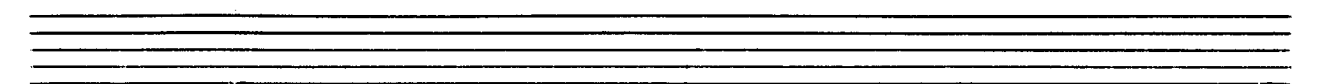
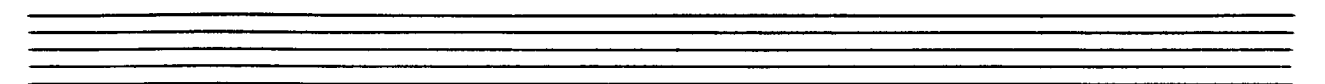
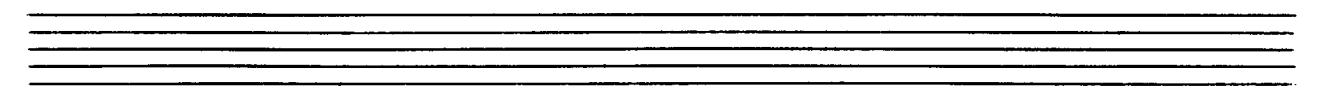
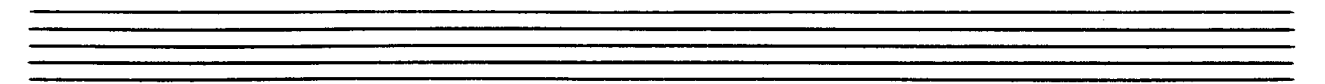
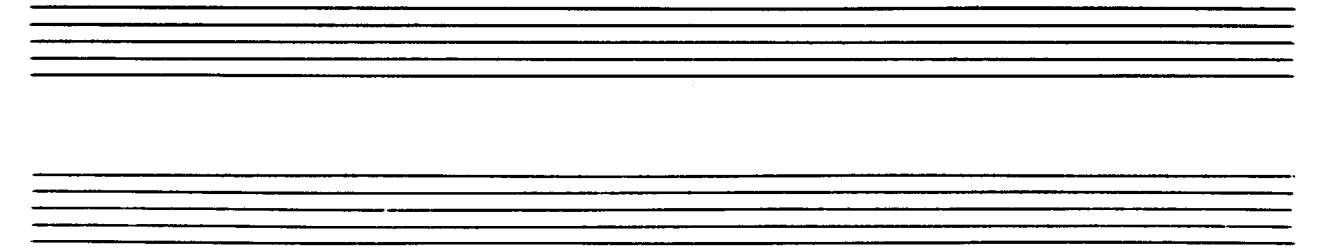


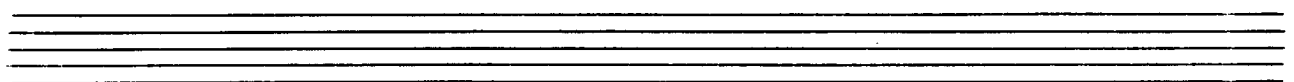
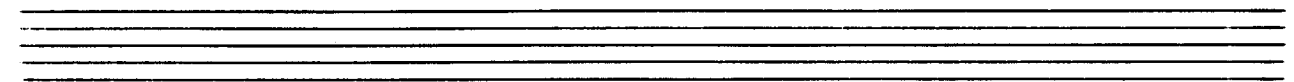
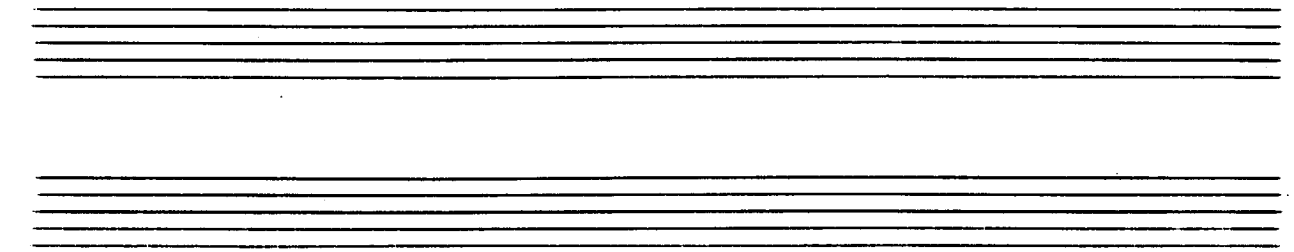
G.P.

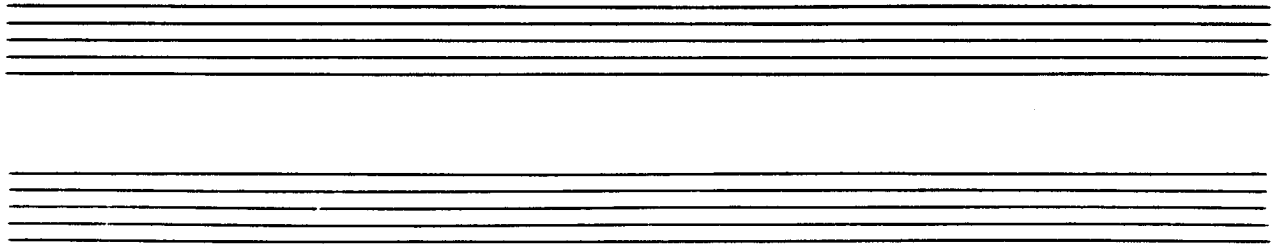


pesante (Lento) sempre dim + gut)

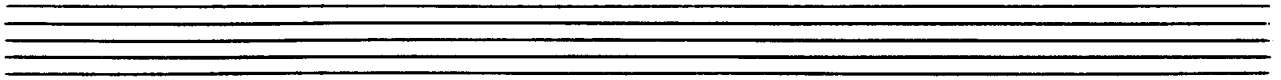
Handwritten musical notation on a grand staff. The top staff has a treble clef and a key signature of one sharp (F#). The bottom staff has a bass clef. The notation includes a circled *pp* with an accent (>) above a chord of F#4 and C5, and another circled *pp* with a colon (:) below a chord of F#4 and C5. A vertical bar line separates the two chords. To the right of the bar line, there are handwritten notes: *D.C.*, *satz [2]*, and *al Fine* with a double underline.







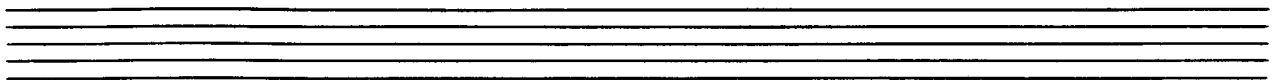
Handwritten musical notation for the first system. The upper staff contains two measures with notes and accents. The lower staff contains two measures with complex chordal structures and accents.



Handwritten musical notation for the second system. The upper staff contains two measures with notes and accents. The lower staff contains two measures with complex chordal structures and accents.



Handwritten musical notation for the third system. The upper staff contains two measures with notes and accents. The lower staff contains two measures with complex chordal structures and accents.



CODA.

(poco rit. ~~~~~)

Handwritten musical score for the first system. The piano staff (top) contains several chords with accidentals (sharps and naturals) and dynamic markings. The bass staff (bottom) features a series of vertical strokes with accents and a 'Pedal' marking. A 'Coda' symbol is present at the end of the system.

Handwritten musical score for the second system. The piano staff begins with a circled 'P' and a 'ruidig' marking. It contains a melodic line with a slur and various accidentals. The bass staff shows chords with accidentals.

Handwritten musical score for the third system. The piano staff is dominated by a long slur covering several notes with various accidentals. The bass staff contains chords with accidentals.

(*frei*)

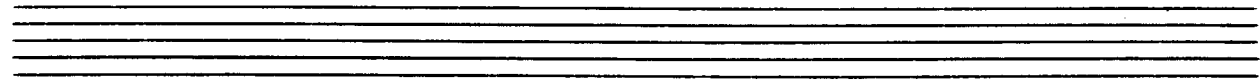
Pedal (aus)

Pedal (aus)

Lento (♩)

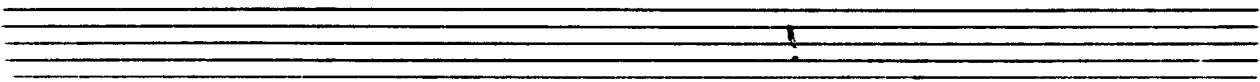
ppp (auf 6) D.C. Satz 3 [3] auf CODA

Ped. (aus)

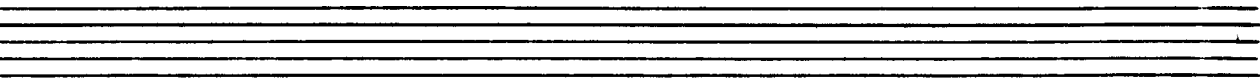


Tempo ♩ Prestissimo

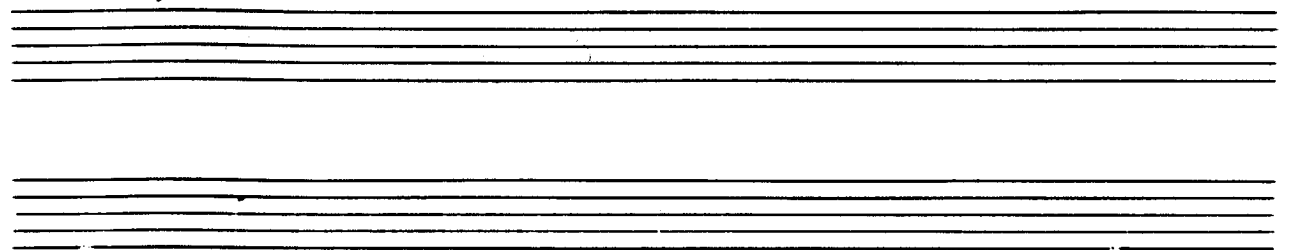
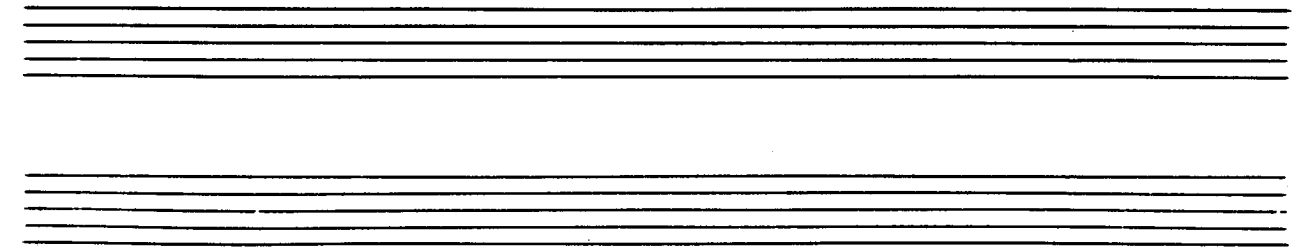
Handwritten musical notation for the first system. It consists of a grand staff with treble and bass clefs. The treble clef part starts with a circled '5i' and a circled 'pp' dynamic marking. The bass clef part has a circled '5i' and a circled 'p' dynamic marking. The notation includes a half note with a 'cresc.' marking, followed by two measures of chords in G-flat major (G-flat, B-flat, D-flat). The piece ends with a fermata over a final chord.



Handwritten musical notation for the second system. It consists of a grand staff with treble and bass clefs. The treble clef part starts with a circled '5i' and a circled 'p' dynamic marking. The bass clef part has a circled '5i' and a circled 'p' dynamic marking. The notation includes a half note with a 'cresc.' marking, followed by two measures of chords in G-flat major (G-flat, B-flat, D-flat). The piece ends with a fermata over a final chord.



Handwritten musical notation for the third system. It consists of a grand staff with treble and bass clefs. The treble clef part starts with a circled '5i' and a circled 'p' dynamic marking. The bass clef part has a circled '5i' and a circled 'p' dynamic marking. The notation includes a half note with a 'cresc.' marking, followed by two measures of chords in G-flat major (G-flat, B-flat, D-flat). The piece ends with a fermata over a final chord.



pppp

Pedal

Ped. aus

(ff)

(af1)

(Gliss)

1976

Adolf Scherbaum