

L.v. BEETHOVEN



W.A. MOZART



# NOTENHEFT

F. SCHUBERT



J. HAYDN



J. STRAUSS



6 Improvisationen

(im alten Stil)

über ein Thema v.

J. S. Bach

1977

(für Orgel)

Adolf Scherbaum

# Adagio (♩) auf Adtel Thema

Sehr breit

6/8 F#

q' q' q'

q' q' q'

q'

2

Handwritten musical notation for the first system. It features a treble clef and a C-clef on the left. The notation includes various notes, accidentals, and a triplet of notes in the final measure.

Handwritten musical notation for the second system, showing two staves with notes and accidentals.

Handwritten musical notation for the third system, featuring a treble clef and a C-clef on the left. The notation includes various notes, accidentals, and a triplet of notes in the final measure.

Handwritten musical notation for the first system. It consists of three staves. The top staff is in treble clef with a key signature of one sharp (F#) and a common time signature. It features a melodic line with a slur. The middle staff is in bass clef with notes and accidentals. The bottom staff contains rhythmic markings and a 'p' dynamic marking.

(2te + 3te mit)

Handwritten musical notation for the second system. It consists of two staves. The top staff is in treble clef with a key signature of one sharp and a common time signature. It features a melodic line with a slur. The bottom staff is in bass clef with notes and accidentals.

Handwritten musical notation for the third system. It consists of two staves. The top staff is in treble clef with a key signature of one sharp and a common time signature. It features a melodic line with a slur. The bottom staff is in bass clef with notes and accidentals.

1977  
FINE

Adolf Schönbauer

# Adagio

(1)

Handwritten musical notation for the first system. It features a treble clef and a key signature of one flat (B-flat). The notation includes a melodic line with various accidentals and a bass line with chords and fingerings. A circled 'P' is written below the first measure. The time signature is 6/8.

Handwritten musical notation for the second system, continuing the piece. It shows further melodic and harmonic development in the same style as the first system.

(2te + 3rit)

Handwritten musical notation for the third system. The notation includes a treble clef and a key signature of one flat. It features a melodic line with a sharp sign and a bass line with chords. The time signature is 6/8.

Handwritten musical notation for the fourth system. It includes a treble clef and a key signature of one flat. The notation is heavily scribbled over with ink. A circled signature is visible at the bottom.

(2)

frei / rubato

Handwritten musical notation for the first system. It consists of two staves. The top staff is in treble clef with a key signature of one sharp (F#). The bottom staff is in bass clef. The music includes various rhythmic values (quarter, eighth, and sixteenth notes) and accidentals (flats and sharps). There are also some circled annotations, including a circled '7' in the bass staff.

(frei / rascher)

Handwritten musical notation for the second system. It features a treble clef and a key signature of one flat (Bb). The music is characterized by a long slur over a series of notes, indicating a rapid or flowing passage.

rasch

Handwritten musical notation for the third system. It consists of two staves. The top staff is in treble clef and the bottom staff is in bass clef. The key signature is one sharp (F#). A long slur spans across both staves, covering a series of notes and chords.

rascher (dringender)

Handwritten musical notation for the fourth system. It consists of two staves. The top staff is in treble clef and the bottom staff is in bass clef. The key signature is one flat (Bb). The music includes various rhythmic values and accidentals, with some notes marked with accents.

(gut)

Handwritten musical notation for the fifth system. It consists of two staves. The top staff is in treble clef and the bottom staff is in bass clef. The key signature is two flats (Bb, Eb). The music includes various rhythmic values and accidentals, with some notes marked with accents.

sehr ruhig

Handwritten musical notation for the first system. The treble clef contains a circled 'p' dynamic marking. The first measure shows a sequence of notes with flats, and the second measure continues with similar notation. The bass clef part consists of two measures of rhythmic patterns with stems and flags.

Handwritten musical notation for the second system. The treble clef part continues with melodic lines. The bass clef part has a circled 'p' dynamic marking in the first measure and 'poco rit' written below the second measure. The notation includes various notes, accidentals, and slurs.

(subito) breit

Handwritten musical notation for the third system. The treble clef has a circled 'ff' dynamic marking. The first measure shows wide intervals, and the second measure continues with similar notation. The bass clef part consists of two measures of rhythmic patterns with stems and flags.

(rit)

Handwritten musical notation for the fourth system. The treble clef part is very dense with many notes and accidentals, including a circled 'p' dynamic marking. The bass clef part consists of two measures of rhythmic patterns with stems and flags.




3

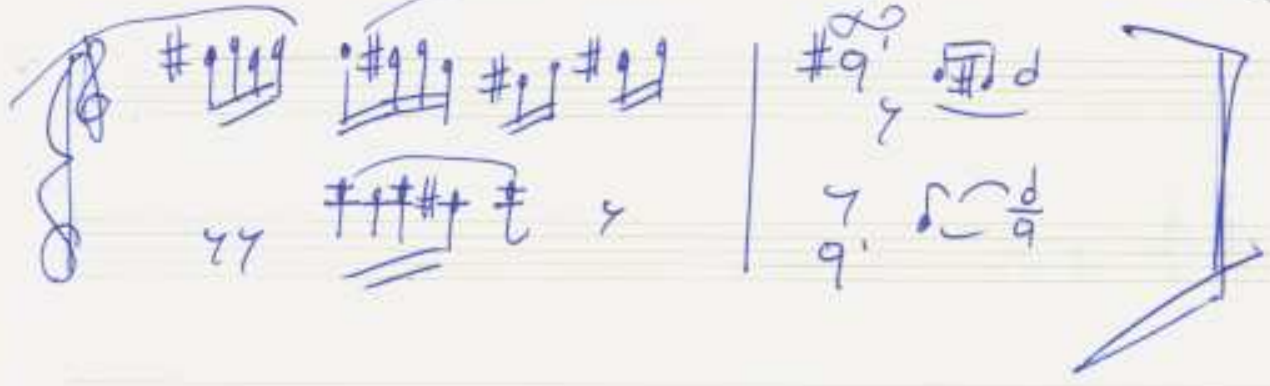
(d) sehr ruhig

Handwritten musical notation for system 1. It consists of two staves. The top staff is in treble clef with a key signature of one flat (Bb) and a circled 'P' dynamic marking. The bottom staff is in bass clef. The first measure of the top staff contains a half note Bb, a quarter note G, and a quarter note F. The second measure contains a quarter note E, a quarter note D, and a quarter note C. The first measure of the bottom staff contains a half note Bb, a quarter note G, and a quarter note F. The second measure contains a quarter note E, a quarter note D, and a quarter note C. A large slur covers the entire system.

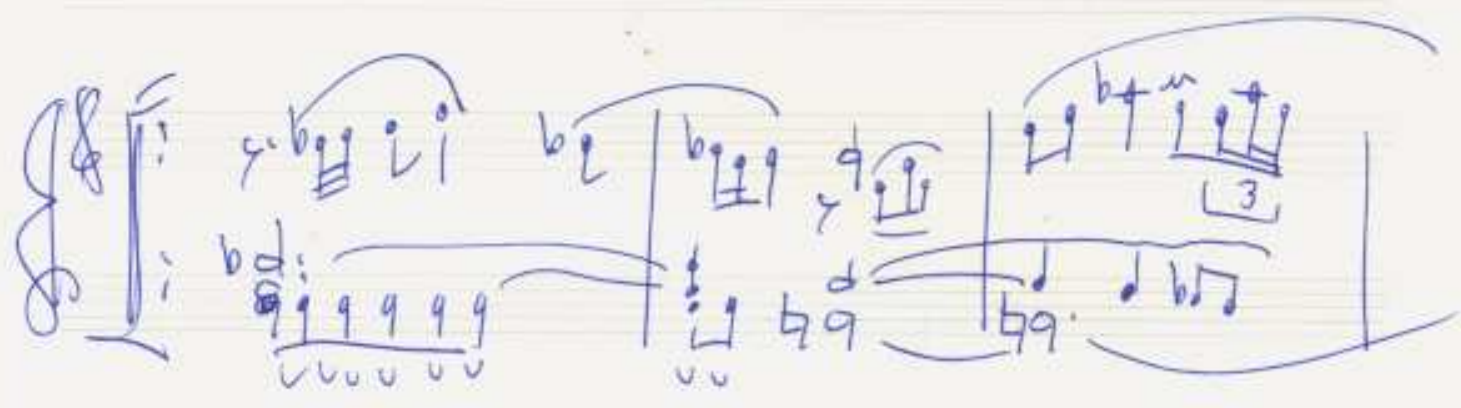
Handwritten musical notation for system 2. It consists of two staves. The top staff is in treble clef with a key signature of one flat (Bb). The bottom staff is in bass clef. The first measure of the top staff contains a half note Bb, a quarter note G, and a quarter note F. The second measure contains a quarter note E, a quarter note D, and a quarter note C. The first measure of the bottom staff contains a half note Bb, a quarter note G, and a quarter note F. The second measure contains a quarter note E, a quarter note D, and a quarter note C. A large slur covers the entire system.

Handwritten musical notation for system 3. It consists of two staves. The top staff is in treble clef with a key signature of one flat (Bb). The bottom staff is in bass clef. The first measure of the top staff contains a half note Bb, a quarter note G, and a quarter note F. The second measure contains a quarter note E, a quarter note D, and a quarter note C. The first measure of the bottom staff contains a half note Bb, a quarter note G, and a quarter note F. The second measure contains a quarter note E, a quarter note D, and a quarter note C. A large slur covers the entire system.

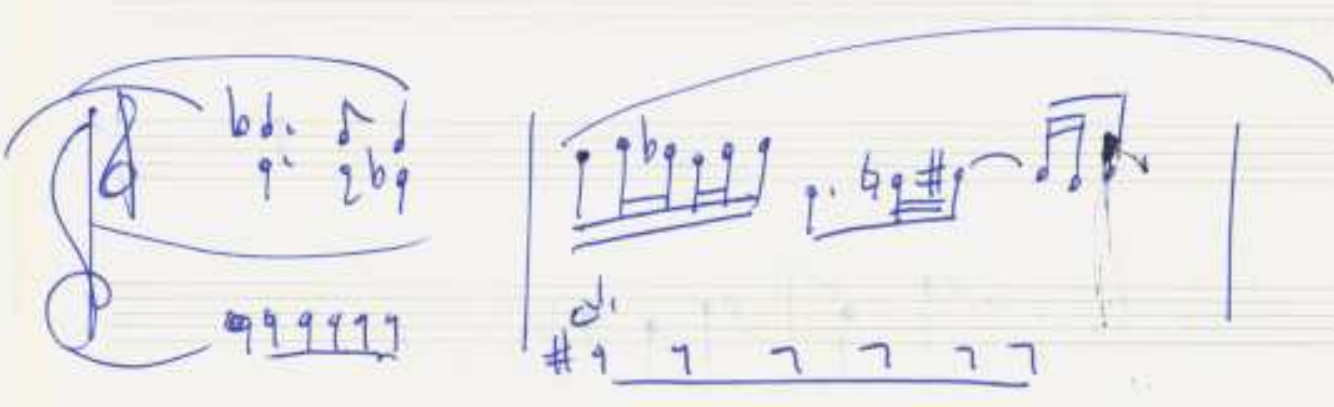
(poco rit) 



Handwritten musical notation for the first system. The treble staff contains notes with sharps and a fermata. The bass staff contains notes with sharps and a fermata. A large bracket on the right side of the system indicates a section.

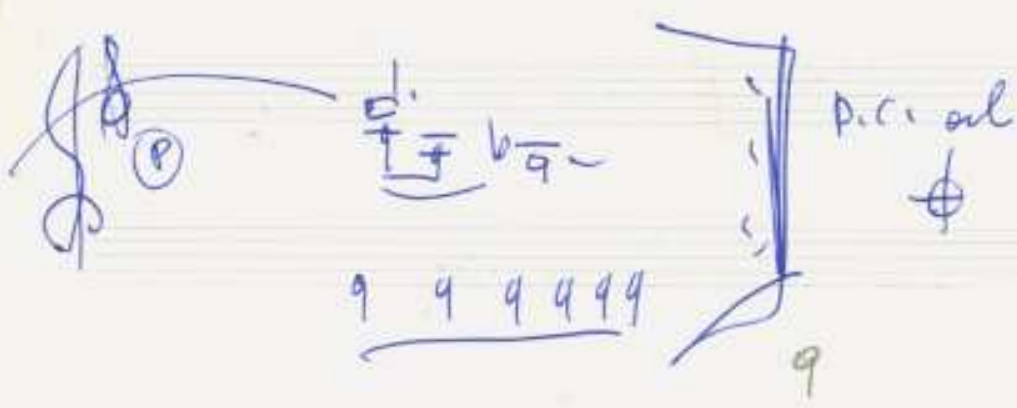


Handwritten musical notation for the second system. The treble staff contains notes with flats and a triplet. The bass staff contains notes with flats and a fermata.



Handwritten musical notation for the third system. The treble staff contains notes with flats and a fermata. The bass staff contains notes with flats and a fermata.

(2te poco rit)



Handwritten musical notation for the fourth system. The treble staff contains notes with flats and a circled 'p'. The bass staff contains notes with flats and a fermata. A large bracket on the right side of the system indicates a section.

Handwritten musical notation on a grand staff. The left hand part shows a treble clef with notes G4, A4, B4, C5, D5. The right hand part shows a bass clef with notes G3, F3, E3, D3. A large bracket spans across both staves, and below it, the numbers '4' and '5' are written in a circle and a square respectively, with a plus sign between them.

breit (frei) rubato

Handwritten musical notation for a single staff. The left hand part shows a treble clef with a circled sharp sign (F#) and a 6/4 time signature. The right hand part shows a bass clef with a circled sharp sign (F#) and a 6/4 time signature. The notes are: F#4, G4, A4, B4, C5, D5, E5, F#5, G5, A5, B5, C6. A large bracket spans across the notes.

Handwritten musical notation for a single staff. The left hand part shows a treble clef with notes G4, A4, B4, C5, D5, E5, F#5, G5, A5, B5, C6. The right hand part shows a bass clef with notes G3, F3, E3, D3, C3, B2, A2, G2. A large bracket spans across the notes.

Handwritten musical notation on a grand staff. The right hand part consists of two measures: the first has a treble clef, a key signature of one sharp (F#), and a dotted quarter note followed by an eighth rest; the second has a treble clef, a key signature of one sharp, and a dotted quarter note. The left hand part consists of two measures: the first has a bass clef, a key signature of one sharp, and a dotted quarter note followed by an eighth rest; the second has a bass clef, a key signature of one sharp, and a dotted quarter note.

Handwritten musical notation on a grand staff. The right hand part consists of two measures: the first has a treble clef, a key signature of one sharp, and a dotted quarter note followed by an eighth rest; the second has a treble clef, a key signature of one sharp, and a dotted quarter note. The left hand part consists of two measures: the first has a bass clef, a key signature of one sharp, and a dotted quarter note followed by an eighth rest; the second has a bass clef, a key signature of one sharp, and a dotted quarter note. The word "(And.)" is written above the first measure of the right hand.

Handwritten musical notation on a grand staff. The right hand part consists of two measures: the first has a treble clef, a key signature of one sharp, and a dotted quarter note followed by an eighth rest; the second has a treble clef, a key signature of one sharp, and a dotted quarter note. The left hand part consists of two measures: the first has a bass clef, a key signature of one sharp, and a dotted quarter note followed by an eighth rest; the second has a bass clef, a key signature of one sharp, and a dotted quarter note.

Handwritten musical notation on a grand staff. The right hand part consists of two measures: the first has a treble clef, a key signature of one sharp, and a dotted quarter note followed by an eighth rest; the second has a treble clef, a key signature of one sharp, and a dotted quarter note. The left hand part consists of two measures: the first has a bass clef, a key signature of one sharp, and a dotted quarter note followed by an eighth rest; the second has a bass clef, a key signature of one sharp, and a dotted quarter note. The word "rit..." is circled above the first measure of the right hand. The word "ritorno" is written above the first measure of the left hand, with an arrow pointing to the right.

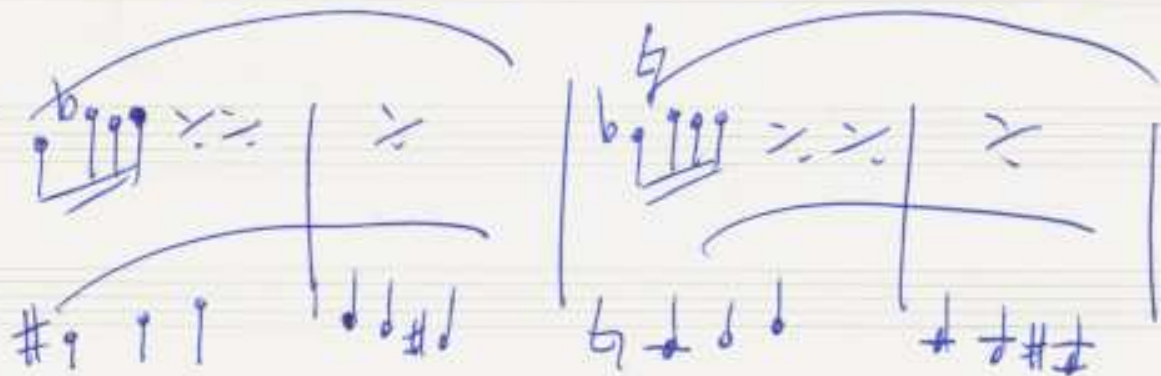
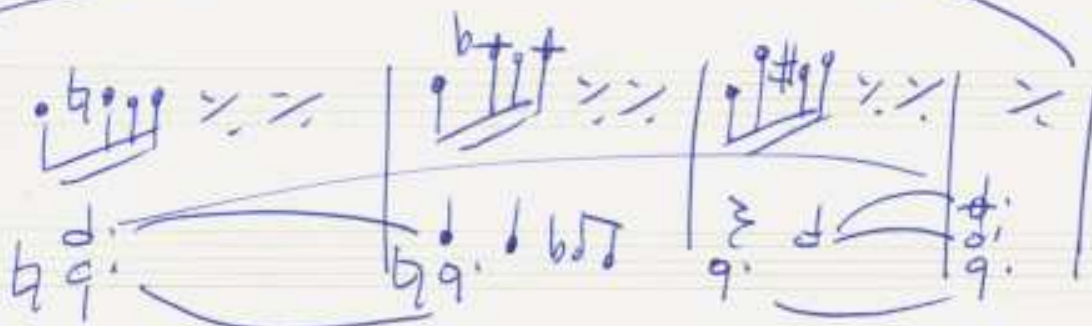
6

# Allegro con brio

Handwritten musical notation for the first system. It features a treble clef and a key signature of one sharp (F#). The music is written in a 3/4 time signature. The first measure contains a treble staff with a quarter note G4, a quarter note A4, and a quarter note B4, followed by a fermata. The bass staff has a quarter rest, a quarter note G3, and a quarter note A3. The second measure has a treble staff with a quarter note A4, a quarter note B4, and a quarter note C5, followed by a fermata. The bass staff has a quarter note G3, a quarter note A3, and a quarter note B3. The third measure has a treble staff with a quarter note B4, a quarter note C5, and a quarter note D5, followed by a fermata. The bass staff has a quarter note G3, a quarter note A3, and a quarter note B3. A circled sharp symbol is present in the first measure of the bass staff.

Handwritten musical notation for the second system. It features a treble clef and a key signature of one sharp (F#). The music is written in a 3/4 time signature. The first measure contains a treble staff with a quarter note G4, a quarter note A4, and a quarter note B4, followed by a fermata. The bass staff has a quarter note G3, a quarter note A3, and a quarter note B3. The second measure has a treble staff with a quarter note A4, a quarter note B4, and a quarter note C5, followed by a fermata. The bass staff has a quarter note G3, a quarter note A3, and a quarter note B3. The third measure has a treble staff with a quarter note B4, a quarter note C5, and a quarter note D5, followed by a fermata. The bass staff has a quarter note G3, a quarter note A3, and a quarter note B3.

Handwritten musical notation for the third system. It features a treble clef and a key signature of one sharp (F#). The music is written in a 3/4 time signature. The first measure contains a treble staff with a quarter note G4, a quarter note A4, and a quarter note B4, followed by a fermata. The bass staff has a quarter note G3, a quarter note A3, and a quarter note B3. The second measure has a treble staff with a quarter note A4, a quarter note B4, and a quarter note C5, followed by a fermata. The bass staff has a quarter note G3, a quarter note A3, and a quarter note B3. The third measure has a treble staff with a quarter note B4, a quarter note C5, and a quarter note D5, followed by a fermata. The bass staff has a quarter note G3, a quarter note A3, and a quarter note B3. The system ends with a double bar line and repeat dots.



dal  
dal

Adagio

Violin I  
Violin II

W  
Alto

D.C. Thema al fine