

4 STÜCKE 1 FÜR ALTFLÖTE UND ORCHESTER

1977

Adolf Scherbaum

Duet

ALTFLÖTE (wichtig notiert)

Handwritten musical score for the first system, consisting of four staves. The notation includes various notes, rests, and dynamic markings. The first staff has a treble clef and a common time signature. The second and third staves have a bass clef. The fourth staff has a bass clef and a common time signature. The notes are written in a shorthand style, often with stems and flags. There are several slurs and accents. Dynamic markings include ff and ff . A marking $(+B)$ is present below the fourth staff.

Handwritten musical score for the second system, consisting of four staves. The notation includes various notes, rests, and dynamic markings. The first staff has a treble clef and a common time signature. The second, third, and fourth staves have a bass clef. The notes are written in a shorthand style, often with stems and flags. There are several slurs and accents. Dynamic markings include ff and $p=$. The first staff has a ff marking. The second staff has a $p=$ marking. The third and fourth staves have a $p=$ marking. There are also markings like 3 and 3 under some notes.

poco rit breit (frei)

Handwritten musical score for the first system. It consists of a piano part with four staves (treble, alto, tenor, and bass clefs) and a vocal line. The piano part begins with a 6/9 time signature and a key signature of one sharp (F#). The vocal line starts with a melodic phrase marked with an accent (^) and a slur. The score is divided into two measures by a double bar line. The first measure shows the piano accompaniment and the vocal line. The second measure continues the piano accompaniment and the vocal line, which ends with a fermata. The tempo marking 'poco rit' and the performance instruction 'breit (frei)' are written above the score.

Handwritten musical score for the second system. It continues the piano part and vocal line from the first system. The piano part has four staves (treble, alto, tenor, and bass clefs). The vocal line continues with a melodic phrase marked with an accent (^) and a slur. The score is divided into two measures by a double bar line. The first measure shows the piano accompaniment and the vocal line. The second measure continues the piano accompaniment and the vocal line, which ends with a fermata. The tempo marking 'poco rit' and the performance instruction 'breit (frei)' are written above the score.

poco rit - dim. -)

sehr ruhig (frei) (viel Vib.)

Handwritten musical score for the first system, featuring a treble clef and a grand staff (flute, bassoon, and double bass).

Treble Clef: $f =$ $f =$. Notes: b_1 , g_1 , \hat{a}_1 , p_1 , g_1 , b_1 , g_1 , $\#_1$, a_1 , b_1 , \hat{a}_1 . Dynamics: $f =$, $f =$. Phrasing: \hat{a}_1 and $\#_1$ are accented.

Flute: $f =$ b_1 a_1 . Dynamics: $f =$. Phrasing: b_1 and a_1 are accented.

Bassoon: $f =$ b_1 a_1 . Dynamics: $f =$. Phrasing: b_1 and a_1 are accented.

Double Bass: $f =$ b_1 a_1 . Dynamics: $f =$. Phrasing: b_1 and a_1 are accented.

Handwritten musical score for the second system, featuring a treble clef and a grand staff (flute, bassoon, and double bass).

Treble Clef: $ff =$. Notes: $\#_1$, g_1 , b_1 , f_1 , $\#_1$, g_1 , b_1 , f_1 , g_1 , a_1 , b_1 , a_1 , b_1 . Dynamics: $ff =$. Phrasing: $\#_1$, g_1 , b_1 , f_1 and $\#_1$, g_1 , b_1 , f_1 are accented.

Flute: $f =$ $\#_1$ b_1 a_1 . Dynamics: $f =$. Phrasing: $\#_1$ and b_1 are accented.

Bassoon: $f =$ a_1 . Dynamics: $f =$. Phrasing: a_1 is accented.

Double Bass: $f =$ b_1 a_1 . Dynamics: $f =$. Phrasing: b_1 and a_1 are accented.

Handwritten musical score for the third system, featuring a treble clef and a grand staff (flute, bassoon, and double bass).

Treble Clef: $f =$ $f =$. Notes: $\#_1$, g_1 , b_1 , g_1 , $\#_1$, g_1 , b_1 , g_1 , \hat{a}_1 , \hat{a}_1 , \hat{a}_1 . Dynamics: $f =$, $f =$. Phrasing: \hat{a}_1 , \hat{a}_1 , \hat{a}_1 are accented.

Flute: $f =$ b_1 g_1 . Dynamics: $f =$. Phrasing: b_1 and g_1 are accented.

Bassoon: $f =$ b_1 g_1 . Dynamics: $f =$. Phrasing: b_1 and g_1 are accented.

Double Bass: $f =$ b_1 g_1 . Dynamics: $f =$. Phrasing: b_1 and g_1 are accented.

Additional markings: *legg.* (leggero), *poco rit.* (poco ritardando).

breit

(frei)

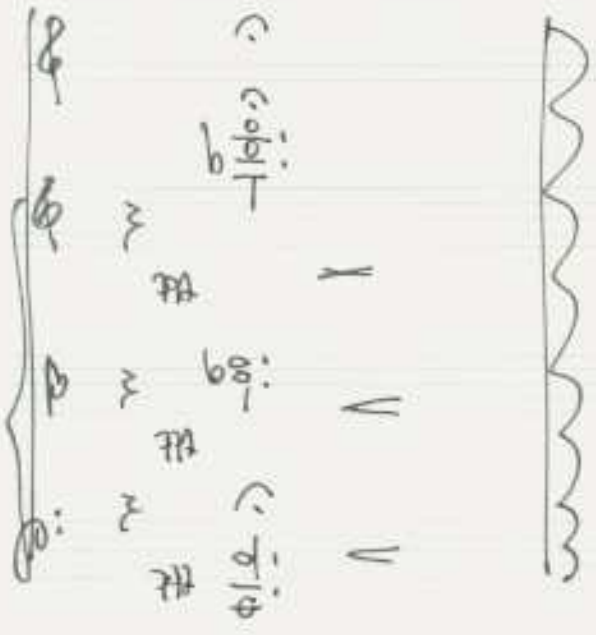
Handwritten musical score for the first system. It consists of two measures separated by a vertical bar line. The notation is spread across six staves: a woodwind section with four staves (Flute, Clarinet, Bassoon, and Contrabass) and a string section with two staves. The woodwind parts feature notes with various accidentals (sharps, flats, naturals) and some notes are beamed together. The string parts are mostly rests with some notes in the second measure. Dynamic markings include 'ff' and 'f'. The word 'breit' is written at the top left, and '(frei)' is written above the first measure.

Handwritten musical score for the second system, similar in layout to the first system. It consists of two measures separated by a vertical bar line. The notation is spread across six staves: a woodwind section with four staves (Flute, Clarinet, Bassoon, and Contrabass) and a string section with two staves. The woodwind parts feature notes with various accidentals and some notes are beamed together. The string parts are mostly rests with some notes in the second measure. Dynamic markings include 'f' and '>'. The second measure has a 'ff' marking above the first staff.

(poco rit - dim)

Lento (frei -

Solo (ex. rit - ...



breit - pesante

2

Handwritten musical score for three staves. The top staff is in treble clef with a 3/4 time signature. It features a triplet of eighth notes followed by a sixteenth-note sextuplet. The middle and bottom staves are in bass clef with a 4/4 time signature. The middle staff has a sharp sign and the bottom staff has a sharp sign and a flat sign. The music is divided into three measures by vertical bar lines.

frei - ruhig

Handwritten musical score for three staves. The top staff is in treble clef with a 3/4 time signature. It features a series of notes with a dynamic marking 'p ='. The middle and bottom staves are in bass clef with a 4/4 time signature. The middle staff has a sharp sign and the bottom staff has a sharp sign and a flat sign. The music is divided into three measures by vertical bar lines.

Handwritten musical score for the first system, featuring four staves:

- Staff 1 (Treble Clef):** Contains melodic lines with notes, slurs, and accents. Includes dynamic markings like ff and $arco$.
- Staff 2 (Violin):** Shows a sustained note with a sharp sign and a dynamic marking of ff .
- Staff 3 (Viola):** Shows a sustained note with a flat sign and a dynamic marking of ff .
- Staff 4 (Cello/Bass):** Shows a melodic line with notes, slurs, and accents, including a dynamic marking of ff .

Handwritten musical score for the second system, featuring four staves:

- Staff 1 (Treble Clef):** Contains melodic lines with notes, slurs, and accents. Includes dynamic markings like p and f .
- Staff 2 (Violin):** Shows a sustained note with a sharp sign and a dynamic marking of $ffpp$.
- Staff 3 (Viola):** Shows a sustained note with a sharp sign and a dynamic marking of $ffpp$.
- Staff 4 (Cello/Bass):** Shows a melodic line with notes, slurs, and accents, including a dynamic marking of $ffpp$.

Additional notes: The word "rit..." is written above the third measure of the first staff. The number "10" is written above the footer.

Lento

(git)

Handwritten musical score for 'Lento' (guitar). The score is divided into three measures. The top staff is for guitar, with notes $b\hat{q}.$, $b\hat{q}.$, and $\#q.$. The first measure includes a fp dynamic marking and a 'Solo' instruction with a wavy line. The second and third measures have a $>$ accent. The piano accompaniment consists of three staves: the first staff has a pp dynamic and a $\#$ sign; the second staff has a B and pp dynamic; the third staff has a p and pp dynamic. Vertical lines separate the three measures.

breit (appassionata)

Handwritten musical score for 'breit (appassionata)'. The score is divided into three measures. The top staff is for guitar, with notes $\#$, $\#$, and $\#$. The first measure includes an 'alle' marking and a wavy line. The second and third measures have a \div symbol. The piano accompaniment consists of three staves: the first staff has a B and $\#$ dynamic; the second staff has a b and $q.$ dynamic; the third staff has a b and $d.$ dynamic. Vertical lines separate the three measures.

(frei)

Handwritten musical score for the first system. It features a treble clef staff with notes and rests, and three bass clef staves. The treble staff has dynamics like 'f=' and '3', and notes with accidentals (b, #). The bass staves are mostly empty with some initial notes and dynamics like 'ffpp' and 'b'.

Handwritten musical score for the second system. It features a treble clef staff with notes and rests, and three bass clef staves. The treble staff has dynamics like 'ff=' and 'f', and notes with accidentals. The bass staves have complex rhythmic patterns and dynamics like 'ff' and 'f'.

(frei) (mit + dem...)

ffp
ffp
ffp

Lento

Solo
pp
Solo
Cello

(mit...)

(♩)(♩)

(zeit ———)

Handwritten musical notation for the first system, consisting of three measures. The notation includes dynamics (fp, pp), articulation (accents, slurs), and notes with stems.

Measure 1: Treble clef, *fp* $\hat{f} \hat{g} \hat{a}$ with a slur and accents. Bass clef, *alle pp* $f \# g$. Bass clef, *alle pp* $\# g$. Bass clef, *alle ctB pp* $f d$.

Measure 2: Treble clef, $t \hat{b} \hat{g}$ with an accent and *fp*. Bass clef, \hat{f} . Bass clef, \hat{f} . Bass clef, \hat{f} .

Measure 3: Treble clef, $t \hat{b} \hat{g}$ with an accent and *fp* with a slur. Bass clef, $f \# g$ with an accent. Bass clef, $f d$ with an accent. Bass clef, $b g$ with an accent.

Handwritten musical notation for the second system, consisting of two measures. The notation includes dynamics (pp), articulation (accents, slurs), and notes with stems.

Measure 1: Treble clef, $f g$ with an accent and $i b g$ with an accent and a slur. Bass clef, f with an accent. Bass clef, f with an accent. Bass clef, $b g$ with an accent.

Measure 2: Treble clef, f . Bass clef, f with *pp* and *lunga*. Bass clef, f with *pp*. Bass clef, $b g$ with *pp*.

Leute (siehe frei gehalten)

Handwritten musical score for the first system, measures 1-4. The score is in 3/4 time and features a piano (p) dynamic. The first staff (treble clef) contains a melodic line with notes b_2 , g_2 , b_2 , g_2 , $\#_2$, b_2 , $\#_2$, $\#_2$. The piano accompaniment (piano) consists of chords in the right hand (3/4, $\#_2$) and single notes in the left hand (b_2 , $\#_2$, $\#_2$).

Handwritten musical score for the second system, measures 5-8. The score continues in 3/4 time. The first staff (treble clef) contains a melodic line with notes $\#_2$, g_2 , $\#_2$, g_2 . The piano accompaniment (piano) consists of chords in the right hand ($\#_2$, g_2) and single notes in the left hand (b_2 , $\#_2$).

breit

Handwritten musical score for the 'breit' section. It consists of four staves. The top staff is a treble clef with a whole note chord consisting of a sharp sign, a flat sign, and a plus sign. The second staff is a treble clef with a sharp sign, a flat sign, and a plus sign. The third staff is a bass clef with a sharp sign, a flat sign, and a plus sign. The fourth staff is a bass clef with a sharp sign, a flat sign, and a plus sign. The score is divided into four measures by vertical bar lines. The first measure has a whole note chord. The second measure has a whole note chord with a sharp sign and a flat sign. The third measure has a whole note chord with a sharp sign and a flat sign. The fourth measure has a whole note chord with a sharp sign and a flat sign. There are various markings above the notes, including accents and slurs.

sehr ruhig (zart)

Handwritten musical score for the 'sehr ruhig (zart)' section. It consists of four staves. The top staff is a treble clef with a whole note chord consisting of a sharp sign, a flat sign, and a plus sign. The second staff is a treble clef with a sharp sign, a flat sign, and a plus sign. The third staff is a bass clef with a sharp sign, a flat sign, and a plus sign. The fourth staff is a bass clef with a sharp sign, a flat sign, and a plus sign. The score is divided into four measures by vertical bar lines. The first measure has a whole note chord. The second measure has a whole note chord with a sharp sign and a flat sign. The third measure has a whole note chord with a sharp sign and a flat sign. The fourth measure has a whole note chord with a sharp sign and a flat sign. There are various markings above the notes, including accents and slurs.

Handwritten musical score for a string quartet, consisting of four staves. The notation includes various dynamics and articulations:

- Staff 1 (Violin I):** Starts with a forte (*f*) dynamic and a slur over a sixteenth-note figure. A first ending bracket is present. Dynamics include *f* and *ff*.
- Staff 2 (Violin II):** Features a forte (*f*) dynamic and a slur over a sixteenth-note figure. Dynamics include *f* and *ff*.
- Staff 3 (Viola):** Features a forte (*f*) dynamic and a slur over a sixteenth-note figure. Dynamics include *f* and *ff*.
- Staff 4 (Cello/Double Bass):** Features a forte (*f*) dynamic and a slur over a sixteenth-note figure. Dynamics include *f* and *ff*. Includes the instruction *con sord.* and a circled *p* dynamic.

Handwritten musical score for a string quartet, consisting of four staves. The notation includes various dynamics and articulations:

- Staff 1 (Violin I):** Features a slur over a sixteenth-note figure. Dynamics include *f* and *ff*.
- Staff 2 (Violin II):** Features a slur over a sixteenth-note figure. Dynamics include *f* and *ff*.
- Staff 3 (Viola):** Features a slur over a sixteenth-note figure. Dynamics include *f* and *ff*.
- Staff 4 (Cello/Double Bass):** Features a slur over a sixteenth-note figure. Dynamics include *f* and *ff*.

(poco rit. ---)

Handwritten musical score for a string quartet, consisting of two staves. The notation includes various dynamics and articulations:

- Staff 1 (Violin I):** Features a slur over a sixteenth-note figure. Dynamics include *f* and *ff*. Includes the instruction *rubato*.
- Staff 2 (Violin II):** Features a slur over a sixteenth-note figure. Dynamics include *f* and *ff*.

soler ruhig (lento) frei

3/4

Handwritten musical score for the first system. It features a piano part with three staves: Flute (top), Solo Flute (middle), and Solo Cello (bottom). A vocal line is written above the piano part. The score is in 3/4 time. The first measure has a key signature of one flat (B-flat) and a common time signature. The second measure has a key signature of one flat (B-flat) and a common time signature. The third measure has a key signature of one flat (B-flat) and a common time signature. The fourth measure has a key signature of one flat (B-flat) and a common time signature. The score includes dynamic markings such as *fp* and *p*. There are also some handwritten notes and symbols, including a large bracket over the first two measures and a large bracket over the last two measures.

Handwritten musical score for the second system. It features a piano part with four staves: Flute (top), Flute (middle), Flute (bottom), and Cello/Bass (bottom). A vocal line is written above the piano part. The score is in 3/4 time. The first measure has a key signature of one flat (B-flat) and a common time signature. The second measure has a key signature of one flat (B-flat) and a common time signature. The third measure has a key signature of one flat (B-flat) and a common time signature. The fourth measure has a key signature of one flat (B-flat) and a common time signature. The score includes dynamic markings such as *fp*, *ff*, and *pp*. There are also some handwritten notes and symbols, including a large bracket over the first two measures and a large bracket over the last two measures.

(poco rit.....)

Handwritten musical score for a string quartet, measures 1-4. The score is written for four staves: Violin I, Violin II, Viola, and Cello/Double Bass. Measure 1: Violin I has a sixteenth-note chord (F#, G, A, B) with an accent and a fermata. Violin II has a quarter note (F#), Viola has a quarter note (F#), and Cello/Bass has a quarter note (B). Measure 2: Violin I has a sixteenth-note chord (F#, G, A, B) with an accent and a fermata. Violin II has a quarter note (F#), Viola has a quarter note (F#), and Cello/Bass has a quarter note (B). Measure 3: Violin I has a sixteenth-note chord (F#, G, A, B) with an accent and a fermata. Violin II has a quarter note (F#), Viola has a quarter note (F#), and Cello/Bass has a quarter note (B). Measure 4: Violin I has a sixteenth-note chord (F#, G, A, B) with an accent and a fermata. Violin II has a quarter note (F#), Viola has a quarter note (F#), and Cello/Bass has a quarter note (B). Dynamics include 'f' and 'p'.

breit

(poco rit.....)

Handwritten musical score for a string quartet, measures 5-8. The score is written for four staves: Violin I, Violin II, Viola, and Cello/Double Bass. Measure 5: Violin I has a sixteenth-note chord (F#, G, A, B) with an accent and a fermata. Violin II has a quarter note (F#), Viola has a quarter note (F#), and Cello/Bass has a quarter note (B). Measure 6: Violin I has a sixteenth-note chord (F#, G, A, B) with an accent and a fermata. Violin II has a quarter note (F#), Viola has a quarter note (F#), and Cello/Bass has a quarter note (B). Measure 7: Violin I has a sixteenth-note chord (F#, G, A, B) with an accent and a fermata. Violin II has a quarter note (F#), Viola has a quarter note (F#), and Cello/Bass has a quarter note (B). Measure 8: Violin I has a sixteenth-note chord (F#, G, A, B) with an accent and a fermata. Violin II has a quarter note (F#), Viola has a quarter note (F#), and Cello/Bass has a quarter note (B). Dynamics include 'f' and 'p'.

(frei)

pp

p

f

f

f

(#)

(b) > p

p

p

p

sehr ruhig.

Solo

hülle

pp

pp

pp

nur cello

pp

f

f

f

Solo (ruhig) seit + diem.....

p

pp

Lunga

frei) rubato

frei (wie ein Rezitativ) Bloestempo

buck

Handwritten musical score for the first system. It consists of three staves: Treble Clef (top), Alto Clef (middle), and Bass Clef (bottom). The Treble staff contains a melodic line with notes and rests, marked with dynamics f and f . The Alto staff has a whole rest. The Bass staff has notes $b^{\flat} o$ and $b^{\flat} o$, marked with f . A second measure shows a melodic line in the Treble staff with dynamics f and f , and a melodic line in the Bass staff with dynamics f and f . The word "buck" is written above the Treble staff.

Handwritten musical score for the second system. It consists of three staves: Treble Clef (top), Alto Clef (middle), and Bass Clef (bottom). The Treble staff contains a melodic line with notes and rests, marked with dynamics f and f . The Alto staff has a whole rest. The Bass staff has notes $b^{\flat} o$ and $b^{\flat} o$, marked with f . A second measure shows a melodic line in the Treble staff with dynamics f and f , and a melodic line in the Bass staff with dynamics f and f . The word "buck" is written above the Treble staff.

breit

Handwritten musical score for strings and woodwinds. The score is in 3/4 time and consists of four measures. The instruments are Flute (Fl.), Clarinet in B-flat (Cl. B), Bassoon (Fag.), and Double Bass (Baß). The Flute part has a dynamic marking of *ff*. The woodwinds have various notes and rests, with some notes marked with accents (^) and slurs. The bass part has notes marked with accents (^) and slurs.

Handwritten musical score for woodwinds and strings. The score is in 3/4 time and consists of three measures. The instruments are Flute (Fl.), Clarinet in B-flat (Cl. B), Bassoon (Fag.), and Double Bass (Baß). The Flute part has a dynamic marking of *ff* and a slur over the first two measures. The woodwinds have various notes and rests, with some notes marked with accents (^) and slurs. The bass part has notes marked with accents (^) and slurs.

Handwritten musical score for a solo. The score is in 6/4 time and consists of two measures. The instrument is a Solo. The first measure has a dynamic marking of *ff* and a slur over the notes. The second measure has a dynamic marking of *ff* and a slur over the notes. The notes are marked with accents (^) and slurs.

breit — pesante

Handwritten musical score for four staves (Soprano, Alto, Tenor, Bass) in 4/4 time. The score is divided into three measures. The first measure has a key signature of one sharp (F#) and a common time signature (C). The second measure has a key signature of two sharps (F#, C#) and a common time signature (C). The third measure has a key signature of one sharp (F#) and a common time signature (C). The notation includes various notes, rests, and dynamic markings such as 'ff' and 'p'. There are also some handwritten annotations above the staves, including 'dein' and 'p'.

(frei)

(poco rit.)

Handwritten musical score for four staves (Soprano, Alto, Tenor, Bass) in 4/4 time. The score is divided into three measures. The first measure has a key signature of one flat (Bb) and a common time signature (C). The second measure has a key signature of one flat (Bb) and a common time signature (C). The third measure has a key signature of one sharp (F#) and a common time signature (C). The notation includes various notes, rests, and dynamic markings such as 'p'. There are also some handwritten annotations above the staves, including 'p' and 'rit.'.

breit

Handwritten musical score for three staves (treble, alto, and bass clefs). The first staff has a whole rest. The second and third staves contain notes with accents and slurs. The second measure shows a change in dynamics and phrasing. The third measure features a fermata over a note in the second staff and a slur over notes in the other two staves.

sehr
frei-

Handwritten musical score for three staves (treble, alto, and bass clefs). The first staff has a melodic line with a slur and a fermata. The second and third staves have notes with accents and slurs. The second measure shows a change in dynamics and phrasing. The third measure features a fermata over a note in the second staff and a slur over notes in the other two staves.

Handwritten musical score for a string quartet. The top staff is the first violin, with notes and slurs. Below it are the second violin, viola, and cello/bass staves, each with a single note. The word "frei" with an arrow is written between the staves. The dynamic marking "pp" is at the end.

Lento

Handwritten musical score for a string quartet, marked "Lento". It shows four measures. The first measure has a treble clef and a key signature of one sharp (F#). The second measure has a dynamic marking "pp" and a key signature of one sharp. The third measure has a key signature of one sharp. The fourth measure has a key signature of one sharp and a dynamic marking "pp". The staves are labeled with instrument abbreviations: V1, V2, V, and C/B. A box containing "4/4" is in the bottom right corner.

Tempo 1.

Handwritten musical score for the first system. It consists of three staves: Treble clef (top), Alto clef (middle), and Bass clef (bottom).
 - Treble clef: Starts with a dynamic marking $p = \gamma$. The first measure contains notes $\hat{i} \hat{i} \hat{i} \hat{i}$ with a slur and a breath mark. The second measure contains notes $\hat{i} \hat{i} \hat{i} \hat{i}$ with a slur and a breath mark. The third measure contains a whole note \hat{o} .
 - Alto clef: Contains rests in all three measures.
 - Bass clef: Starts with a dynamic marking pp and a note $\# \hat{o}$. The second measure contains a whole note $\# \hat{o}$. The third measure contains a whole note \hat{o} .
 - Performance markings: $p133$ with a slur and breath mark is written below the bass clef staff in the second and third measures. A large bracket spans the second and third measures of the entire system.

Handwritten musical score for the second system. It consists of three staves: Treble clef (top), Alto clef (middle), and Bass clef (bottom).
 - Treble clef: Starts with a dynamic marking $p = \gamma$. The first measure contains notes $\hat{i} \hat{i} \hat{i} \hat{i}$ with a slur and a breath mark. The second measure contains notes $\hat{i} \hat{i} \hat{i} \hat{i}$ with a slur and a breath mark. The third measure contains notes $\hat{i} \hat{i} \hat{i} \hat{i}$ with a slur and a breath mark. The fourth measure contains notes $\hat{i} \hat{i} \hat{i} \hat{i}$ with a slur and a breath mark.
 - Alto clef: Contains rests in all four measures.
 - Bass clef: Starts with a dynamic marking pp and a note $\flat \hat{o}$. The second measure contains a whole note $\flat \hat{o}$. The third measure contains a whole note $\flat \hat{o}$. The fourth measure contains a whole note $\flat \hat{o}$.
 - Performance markings: $p133$ with a slur and breath mark is written below the bass clef staff in the second and third measures. $p133$ is written below the bass clef staff in the fourth measure. A large bracket spans the second, third, and fourth measures of the entire system.

breve

Handwritten musical score for a piece titled "breve". The score is written on four staves. The first staff is in treble clef with a key signature of one flat (B-flat). The second and third staves are in bass clef with a key signature of one flat. The fourth staff is in C-bass clef with a key signature of one flat. The score is divided into three measures. The first measure contains notes and rests. The second measure contains notes with accents and dynamic markings like "ffp" and "f". The third measure contains notes with accents and dynamic markings like "f". There are various annotations including "f", "ffp", and "f" with arrows, and a circled "arru" at the bottom left.

(poco rit-dim) (frei.....)

Handwritten musical score for a piece titled "poco rit-dim (frei.....)". The score is written on four staves. The first staff is in treble clef with a key signature of one flat (B-flat). The second and third staves are in bass clef with a key signature of one flat. The fourth staff is in C-bass clef with a key signature of one flat. The score is divided into two measures. The first measure contains notes and rests. The second measure contains notes with accents and dynamic markings like "pp" and "p". There are various annotations including "pp", "p", and "p" with arrows.