

UFSUS

Notenheft



Sonate 1978

für Trompete in C

und Klavier (3 Sätze)

Adolf Scherbaum

1

And.

inc

ff 6

ff

ff

1

ff

Handwritten musical score for the first system. It consists of a treble clef staff and a bass clef staff. The treble staff contains a melodic line with a quarter note marked with an accent (^) and a dynamic marking of f . The bass staff contains a bass line with a quarter note marked with an accent (^) and a dynamic marking of f . There are various rests and slurs throughout the system.

Handwritten musical score for the second system. A circled number '2' is written above the treble staff. The treble staff has a quarter note with an accent (^) and a dynamic marking of f . The bass staff has a quarter note with an accent (^) and a dynamic marking of f . There are various rests and slurs throughout the system.

Handwritten musical score for the third system. A circled number '3' is written above the treble staff. The treble staff has a quarter note with an accent (^) and a dynamic marking of f . The bass staff has a quarter note with an accent (^) and a dynamic marking of ff . There are various rests and slurs throughout the system.

4

5

Handwritten musical score for measures 6, 7, and 8. Measure 6 features a melodic line in the right hand with accents and slurs, and a bass line with chords. Measure 7 continues the melodic line with a slur and accents, and the bass line has a chord. Measure 8 is mostly empty with a few notes in the bass line.

Handwritten musical score for measures 9 and 10. Measure 9 shows a melodic line in the right hand with accents and slurs, and a bass line with chords. Measure 10 continues the melodic line with a slur and accents, and the bass line has a chord.

Handwritten musical score for measures 11 and 12. Measure 11 shows a melodic line in the right hand with accents and slurs, and a bass line with chords. Measure 12 continues the melodic line with a slur and accents, and the bass line has a chord.

8

pp

pp

f

Pedal

10

f

f

Ped.

Ped.

11

f

f

f

Ped.

Ped.

weit (appassionata)

ff

12

13

13

(rit+din)

p

frei rubato

6

quod.

f

14

frei 6

f

15

6

f

16

G.P.

lento (con sord.)

Handwritten musical score for the first system, measures 1-4. The score is written for a trumpet and piano. The tempo is marked 'lento' and the performance instruction is '(con sord.)'. The key signature has one sharp (F#). The first system consists of four measures. The trumpet part begins with a whole note chord (F#4, A4, C5) and continues with a melodic line. The piano accompaniment features chords and moving lines in both hands. Dynamics include *pp* and *p*. There are handwritten annotations such as a circled '6' and a circled note in the first measure.

Handwritten musical score for the second system, measures 5-8. The score continues from the first system. The trumpet part features a melodic line with a circled '17' at the end of the system. The piano accompaniment consists of chords and moving lines. Dynamics include *fp*. There are handwritten annotations such as a circled '17' and various slurs and accents.

Handwritten musical score for the third system, measures 9-12. The score continues from the second system. The trumpet part features a melodic line with a circled '18' at the end of the system. The piano accompaniment consists of chords and moving lines. Dynamics include *pp*. There are handwritten annotations such as a circled 'rit' and a circled '18', and the word 'lunga' written in the piano part.

Teil ②

(A) ruhig schreitend

CON SORD.

sehr legato

p =

19

20

(with ...)

21

sehr langsam

Handwritten musical score for the first system, measures 21-22. It features a treble clef staff with a melodic line and a grand staff (piano and bass clefs) with a bass line and a pedal point. The tempo is 'sehr langsam'. Dynamics include pp and p. A circled measure number '22' is at the end of the system.

Handwritten musical score for the second system, measures 23-24. It features a treble clef staff with a melodic line and a grand staff (piano and bass clefs) with a bass line and a pedal point. Dynamics include pp and p. A circled measure number '23' is at the end of the system.

Op. (rit.)

Handwritten musical score for the third system, measures 25-28. It features a treble clef staff with a melodic line and a grand staff (piano and bass clefs) with a bass line and a pedal point. Dynamics include pp and p. A circled measure number '23' is at the end of the system.

Sehr ruhig

Handwritten musical score for the first system, measures 22-23. The top staff is in treble clef with a key signature of one flat and a common time signature. It contains a melodic line with dynamics *pp* and *f*. The middle staff is in treble clef with a circled measure 22. The bottom staff is in bass clef with a key signature of one flat and a common time signature, containing a bass line with dynamics *pp*.

Handwritten musical score for the second system, measures 24-25. The top staff is in treble clef with a key signature of one flat and a common time signature. It contains a melodic line with dynamics *ff* and a circled measure 24. The middle staff is in treble clef with a circled measure 25. The bottom staff is in bass clef with a key signature of one flat and a common time signature.

Handwritten musical score for the third system, measures 26-27. The top staff is in treble clef with a key signature of one flat and a common time signature. It contains a melodic line with dynamics *mp* and a circled measure 26. The middle staff is in treble clef with a key signature of one flat and a common time signature, containing a bass line with dynamics *mp* and a circled measure 27. The bottom staff is in bass clef with a key signature of one flat and a common time signature, containing a bass line with dynamics *ppp* and a circled measure 27.

teil (3)

Presto
(offen) *erregt*

3

hart (stacc.)

8

26

4

28

Handwritten musical score for measures 27-29. The score is in G major (one sharp) and 4/4 time. It features a melody in the upper voice with accents and slurs, and accompaniment in the lower voices with chords and rhythmic patterns. Measure 29 is circled.

Handwritten musical score for measures 30-32. The score continues in G major and 4/4 time. It includes a melody with slurs and accents, and accompaniment with chords and rhythmic patterns. Measure 30 is circled.

Handwritten musical score for measures 33-35. The score continues in G major and 4/4 time. It features a melody with slurs and accents, and accompaniment with chords and rhythmic patterns. Measure 33 is circled.

Handwritten musical score for measures 31 and 32. The system includes a treble clef staff with notes and rests, and a grand staff (piano) with chords and arpeggios. Measure 31 is circled in the top right. The piano part features complex chordal textures with various accidentals and dynamics.

Handwritten musical score for measures 33 and 34. The system includes a treble clef staff with notes and rests, and a grand staff (piano) with chords and arpeggios. Measure 33 is circled in the top right. A dynamic marking of *pp* is present in the piano part, along with a *cresc.* (crescendo) hairpin.

Handwritten musical score for measures 35 and 36. The system includes a treble clef staff with notes and rests, and a grand staff (piano) with chords and arpeggios. Measure 35 is circled in the top right. A dynamic marking of *p* is present in the piano part, along with a *cresc.* (crescendo) hairpin.

33

Handwritten musical score for measures 33-34. The score is written on three staves. The top staff is for the trumpet, the middle for the right hand of the piano, and the bottom for the left hand. The key signature is one sharp (F#) and the time signature is 4/4. Measure 33 features a melodic line in the trumpet with accents and slurs, and a piano accompaniment with chords and triplets. Measure 34 continues the melodic line in the trumpet and piano accompaniment with triplets and slurs. There are circled 'ff' markings in both measures.

Handwritten musical score for measures 35-36. The score is written on three staves. The top staff is for the trumpet, the middle for the right hand of the piano, and the bottom for the left hand. The key signature is one sharp (F#) and the time signature is 4/4. Measure 35 features a melodic line in the trumpet with accents and slurs, and a piano accompaniment with chords and triplets. Measure 36 continues the melodic line in the trumpet and piano accompaniment with triplets and slurs. There are circled 'ff' markings in both measures.

34

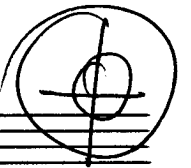
Handwritten musical score for measures 37-38. The score is written on three staves. The top staff is for the trumpet, the middle for the right hand of the piano, and the bottom for the left hand. The key signature is one sharp (F#) and the time signature is 4/4. Measure 37 features a melodic line in the trumpet with accents and slurs, and a piano accompaniment with chords and triplets. Measure 38 continues the melodic line in the trumpet and piano accompaniment with triplets and slurs.

Handwritten musical score for the first system. The top staff is for the trumpet, showing a melodic line with notes G#4, A4, B4, C5, and D5, with slurs and accents. The middle staff is the right-hand piano accompaniment, featuring a rhythmic pattern of eighth notes with slurs and accents. The bottom staff is the left-hand piano accompaniment, showing a bass line with notes G3, F3, E3, and D3, with slurs and accents.

Handwritten musical score for the second system. The top staff is for the trumpet, showing a melodic line with notes G#4, A4, B4, C5, and D5, with slurs and accents. The middle staff is the right-hand piano accompaniment, featuring a rhythmic pattern of eighth notes with slurs and accents. The bottom staff is the left-hand piano accompaniment, showing a bass line with notes G3, F3, E3, and D3, with slurs and accents.

Handwritten musical score for the third system. The top staff is for the trumpet, showing a melodic line with notes G#4, A4, B4, C5, and D5, with slurs and accents. The middle staff is the right-hand piano accompaniment, featuring a rhythmic pattern of eighth notes with slurs and accents. The bottom staff is the left-hand piano accompaniment, showing a bass line with notes G3, F3, E3, and D3, with slurs and accents.

Coda



35

36

37

38

39

frei con sord.

Handwritten musical score for measures 39-40. The top staff (Trompete) contains melodic lines with slurs and accents. The middle staff (Klavier) shows a long, sustained chord with a slur. The bottom staff (Pedal) contains a sequence of notes with slurs and accents. The dynamic marking *pp* is present in both the top and bottom staves.

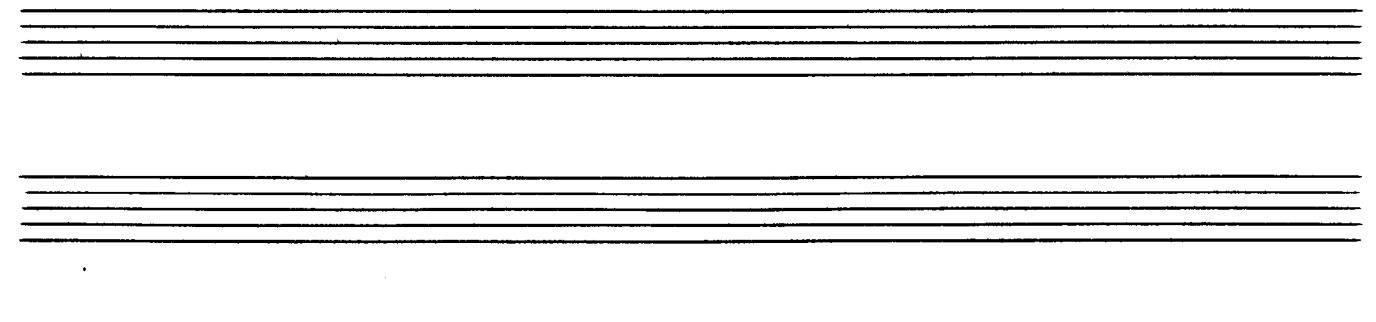
40

Handwritten musical score for measures 41-42. The top staff (Trompete) contains melodic lines with slurs and accents. The middle staff (Klavier) shows a long, sustained chord with a slur. The bottom staff (Pedal) contains a sequence of notes with slurs and accents. The dynamic marking *pp* is present in both the top and bottom staves.

41

lento (sehr ruhig)

Handwritten musical score for measures 43-46. The top staff (Trompete) contains melodic lines with slurs and accents. The middle staff (Klavier) shows a long, sustained chord with a slur. The bottom staff (Pedal) contains a sequence of notes with slurs and accents. The dynamic marking *pp* is present in both the top and bottom staves. A box labeled "Ped." is drawn around the bottom staff.



Musical score system 1. It consists of three staves. The top staff is empty. The middle staff contains a melodic line with a circled 'p' dynamic marking and a slur over a sequence of notes: G#4, A4, Bb4, Bb4, C5. The bottom staff contains a bass line with a circled '42' at the end and the handwritten instruction '(gr. rit)' below it. Above the middle staff, there are handwritten chord diagrams for the first three measures: a triad of G#4, A4, Bb4; a dyad of G#4, A4; and a dyad of G#4, A4.

Musical score system 2. It consists of four staves. The top two staves contain a melodic line with a circled 'p' dynamic marking and a slur over a sequence of notes: G#4, A4, Bb4, Bb4, C5. The bottom two staves contain a bass line with a circled '43' at the end. Above the top two staves, there are handwritten chord diagrams for the four measures: a triad of G#4, A4, Bb4; a dyad of G#4, A4; a dyad of G#4, A4; and a dyad of G#4, A4.

Musical score system 3. It consists of two staves. The top staff is empty. The bottom staff contains a melodic line with a circled 'p' dynamic marking and a slur over a sequence of notes: G#4, A4, Bb4, Bb4, C5. The bottom staff also contains a bass line with a circled '43' at the end. Above the bottom staff, there are handwritten chord diagrams for the four measures: a triad of G#4, A4, Bb4; a dyad of G#4, A4; a dyad of G#4, A4; and a dyad of G#4, A4. The system concludes with the tempo marking 'Tempo ①' and the instruction 'D.C. al Coda'.

CODA

Adolf Scherbaum
Juni 1978