

L.V. BEETHOVEN



W.A. MOZART



NOTENHEFT

F. SCHUBERT



J. HAYDN



J. STRAUSS



FERMAT

442/1 -
Op 1189

2 Große Orgelfantasien
über eine Tonfolge

August 1979

Adolf Scherbaum
Oberseptal

(Die Orgelfantasien beruhen auf einer zwölf-Tonfolge)

(auffassungswürdig würde ich diese Fantasien
interpretiert haben wie (einen alten Choral mit Variationen)

Fantasie No. 1

lento

ORGAN

Handwritten musical notation for the first system. Treble clef, 4/4 time signature, and piano (pp) dynamic marking. The melody consists of quarter notes: G, A#, B, C, B, A, G, F, E. The bass line is mostly rests with some low notes. A slur covers the entire system.

Handwritten musical notation for the second system. Treble clef, 4/4 time signature. The melody continues with quarter notes: D, C, B, A, G, F, E, D. The bass line has some notes and rests. A slur covers the entire system.

Handwritten musical notation for the third system. Treble clef, 4/4 time signature. The melody continues with quarter notes: C, B, A, G, F, E, D. The bass line has some notes and rests. A slur covers the entire system.

Handwritten musical notation for the fourth system. Treble clef, 4/4 time signature. The melody continues with quarter notes: C, B, A, G, F, E, D. The bass line has some notes and rests. A slur covers the entire system.

Handwritten musical notation for the first system. The treble clef staff contains notes with accidentals (sharps) and slurs. The bass clef staff contains notes with accidentals (sharps) and slurs. There are some handwritten annotations like '33' above the first measure.

Handwritten musical notation for the second system. The treble clef staff contains notes with accidentals (flats) and slurs. The bass clef staff contains notes with accidentals (flats) and slurs.

Handwritten musical notation for the third system. The treble clef staff contains notes with accidentals (flats) and slurs. The bass clef staff contains notes with accidentals (flats) and slurs.

(poco rit)

Handwritten musical notation for the fourth system. The treble clef staff contains notes with accidentals (sharps) and slurs. The bass clef staff contains notes with accidentals (flats) and slurs.

class concerto

Handwritten musical notation for the first system. The treble clef staff contains a melodic line with notes G#4, A4, Bb4, and C5, with a circled 'p' dynamic marking. The bass clef staff contains a sustained chord marked with a sharp sign (#).

Handwritten musical notation for the second system. The treble clef staff has a 3/4 time signature and contains notes Gb4, A4, Bb4, and C5. The bass clef staff has a 4/4 time signature and contains notes G4 and Bb4.

Handwritten musical notation for the third system. The treble clef staff has a 3/4 time signature and contains notes Gb4, A4, Bb4, and C5. The bass clef staff has a 4/4 time signature and contains notes G4 and Bb4.

Handwritten musical notation for the fourth system. The treble clef staff has a 4/4 time signature and contains a melodic line with notes G#4, A4, Bb4, and C5. The bass clef staff has a sharp sign (#) and a circled 'p' dynamic marking, with notes G#4 and Bb4.

Handwritten musical notation for the first system. The right hand part consists of four measures with notes and slurs. The left hand part consists of four measures with notes and slurs.

Handwritten musical notation for the second system. The right hand part consists of four measures with notes and slurs. The left hand part consists of four measures with notes and slurs.

Handwritten musical notation for the third system. The right hand part consists of four measures with notes and slurs. The left hand part consists of four measures with notes and slurs.

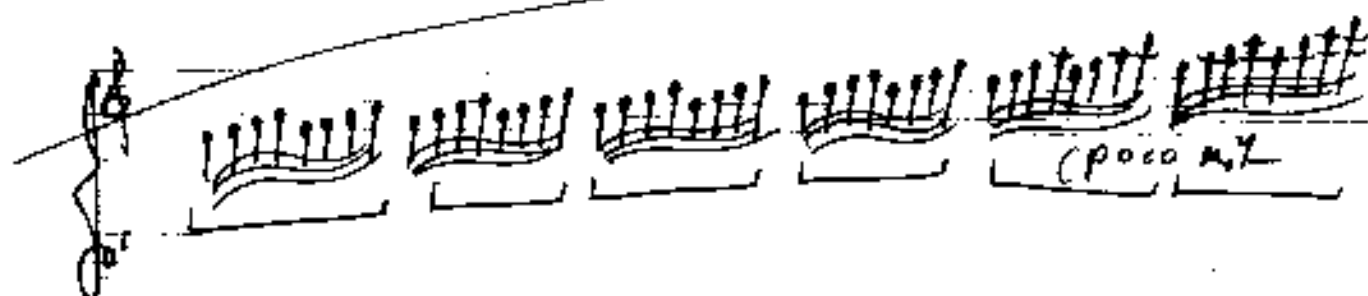
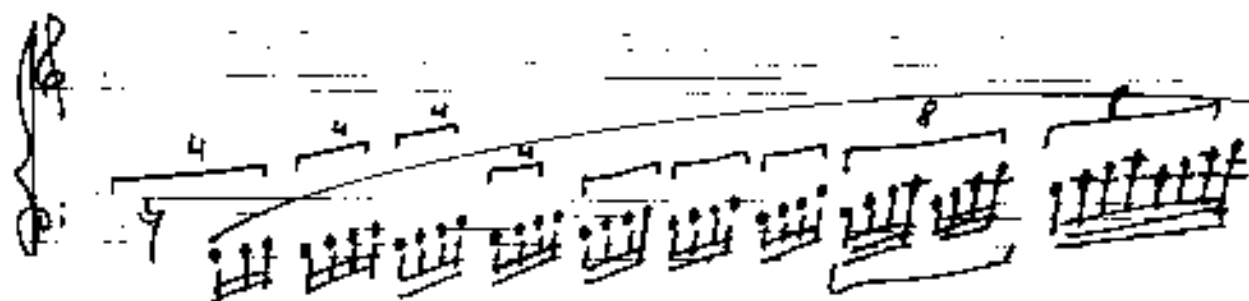
Handwritten musical notation for the fourth system. The right hand part consists of three measures with notes and slurs. The left hand part consists of three measures with notes and slurs.

(poco rit)

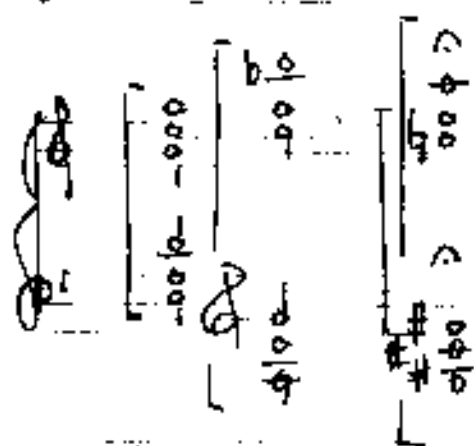
(frei ... (wie am Reg.)

sehr breit ausladend

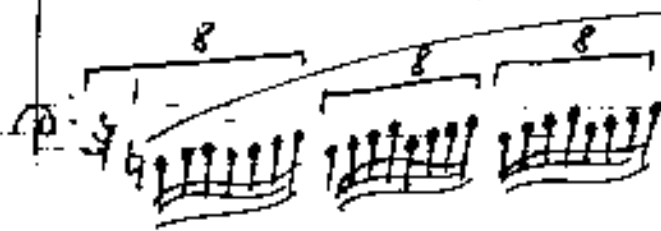
(frei (rubato) appassionata →



triller



Presto (frei



breit - aber nicht schleppend

Handwritten musical notation for the first system. It features a treble clef, a 3/4 time signature, and a piano dynamic marking. The melody consists of three measures of eighth notes, each with a slur above it. The bass line consists of three measures of chords, each with a slur below it. The chords are G major, G major, and G major.

Handwritten musical notation for the second system. It features a treble clef and a key signature of one flat. The melody consists of three measures of eighth notes, each with a slur above it. The bass line consists of three measures of chords, each with a slur below it. The chords are F major, F major, and F major.

Handwritten musical notation for the third system. It features a treble clef and a key signature of two sharps. The melody consists of three measures of eighth notes, each with a slur above it. The bass line consists of three measures of chords, each with a slur below it. The chords are D major, D major, and D major.

Handwritten musical notation for the fourth system. It features a treble clef and a key signature of two sharps. The melody consists of three measures of eighth notes, each with a slur above it. The bass line consists of three measures of chords, each with a slur below it. The chords are D major, D major, and D major. The system ends with a fermata over the final note and the word "(gest...)" written below.

(solo langsam)

Handwritten musical notation for the first system. The right hand (treble clef) starts with a circled 'P' and a '5' above the staff, indicating a 5/4 time signature. The melody consists of quarter notes with slurs and accidentals (sharps and flats). The left hand (bass clef) has a bass line with slurs and a sharp sign.

Handwritten musical notation for the second system. The right hand continues the melodic line with slurs and accidentals. The left hand continues the bass line with slurs and a sharp sign.

Handwritten musical notation for the third system. The right hand continues the melodic line with slurs and accidentals. The left hand continues the bass line with slurs and a sharp sign.

Handwritten musical notation for the fourth system. The right hand continues the melodic line with slurs and accidentals. The left hand continues the bass line with slurs and a sharp sign.

Handwritten musical notation for the first system. The treble staff begins with a treble clef and a wavy line. It contains two measures of music with notes on the first and second lines, some with accidentals (flats). The bass staff begins with a bass clef and contains two measures of music with notes on the first and second lines, some with accidentals (flats). Both staves have horizontal lines connecting notes across measures.

Handwritten musical notation for the second system. The treble staff begins with a treble clef and a wavy line. It contains two measures of music with notes on the first and second lines, some with accidentals (sharps and flats). The bass staff begins with a bass clef and contains two measures of music with notes on the first and second lines, some with accidentals (flats). Both staves have horizontal lines connecting notes across measures.

Handwritten musical notation for the third system. The treble staff begins with a treble clef and contains two measures of music with notes on the first and second lines, some with accidentals (sharps). The bass staff begins with a bass clef and contains two measures of music with notes on the first and second lines, some with accidentals (sharps). Both staves have horizontal lines connecting notes across measures.

Handwritten musical notation for the fourth system. The treble staff begins with a treble clef and contains two measures of music with notes on the first and second lines, some with accidentals (sharps and flats). The bass staff begins with a bass clef and contains two measures of music with notes on the first and second lines, some with accidentals (flats). Both staves have horizontal lines connecting notes across measures.

Handwritten musical notation for the first system, featuring a treble clef, a key signature of one sharp (F#), and a 3/4 time signature. The melody consists of quarter notes and eighth notes, with some notes beamed together. The bass line consists of whole notes.

(poco mf)

Handwritten musical notation for the second system, continuing the piece. It features a treble clef, a key signature of one sharp (F#), and a 3/4 time signature. The melody continues with quarter and eighth notes. The bass line consists of whole notes.

f *tristand. (puck)*

Handwritten musical notation for the third system, marked *mf* in a circle. The treble clef part features a complex melodic line with many beamed eighth notes and triplets. The bass line consists of whole notes.

Handwritten musical notation for the fourth system, continuing the complex melodic line in the treble clef with many beamed eighth notes and triplets. The bass line consists of whole notes.

Handwritten musical notation for the first system. The right hand part features a melodic line with slurs and fingerings (1, 2, 3, 4, 5). The left hand part features a bass line with slurs and fingerings (3, 3, 2).

Handwritten musical notation for the second system. The right hand part features a melodic line with slurs and fingerings (3, 3, 2, 2). The left hand part features a bass line with slurs and fingerings (3, 3, 2, 2).

Handwritten musical notation for the third system. The right hand part features a melodic line with slurs and fingerings (3, 3, 2, 2). The left hand part features a bass line with slurs and fingerings (3, 3, 2, 2).

Handwritten musical notation for the fourth system. The right hand part features a melodic line with slurs and fingerings (3, 3, 2, 2). The left hand part features a bass line with slurs and fingerings (3, 3, 2, 2).

Handwritten musical notation for the first system, featuring a treble clef and a bass clef. The treble staff contains a melodic line with a sharp sign and a fermata. The bass staff contains a bass line with a sharp sign and a fermata.

Handwritten musical notation for the second system, featuring a treble clef and a bass clef. The treble staff contains a melodic line with a flat sign and a fermata. The bass staff contains a bass line with a flat sign and a fermata.

Handwritten musical notation for the third system, featuring a treble clef and a bass clef. The treble staff contains a melodic line with a sharp sign and a fermata. The bass staff contains a bass line with a sharp sign and a fermata.

(out---

Handwritten musical notation for the fourth system, featuring a treble clef and a bass clef. The treble staff contains a melodic line with a sharp sign and a fermata. The bass staff contains a bass line with a sharp sign and a fermata.

Adagio

Handwritten musical notation for the first system, marked **pp**. It features a treble and bass clef with a key signature of one sharp (F#). The music consists of two staves with various notes, rests, and slurs. A circled **pp** dynamic marking is present at the beginning.

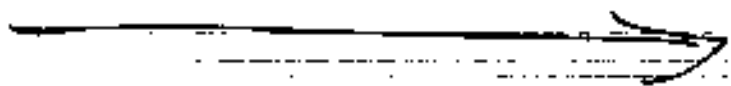
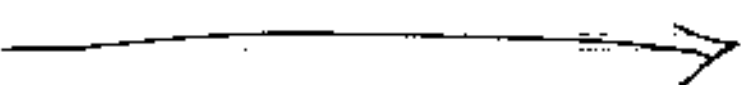
Handwritten musical notation for the second system, marked **p**. It continues the musical piece with similar notation to the first system, including a circled **p** dynamic marking.

Handwritten musical notation for the third system, marked **mf**. The notation includes a circled **mf** dynamic marking and continues the melodic and harmonic development.

Handwritten musical notation for the fourth system, marked **f**. It concludes the piece with a circled **f** dynamic marking.

salto (ff) appianata (oda frei) basely (od. lib.

(immer unruhiger und rascher

ohne bewegh (mitote)

3
4

Handwritten musical notation for the first system. It consists of two staves. The top staff has a treble clef and a key signature of one sharp (F#). The bottom staff has a bass clef and a key signature of one sharp (F#). The music is in 3/4 time. The first measure contains notes G4, A4, B4, and C5. The second measure contains notes D5, E5, and F#5. The third measure contains notes G5, A5, and B5. The fourth measure contains notes C6, B5, and A5. The fifth measure contains notes G5, F#5, and E5. The sixth measure contains notes D5, C5, and B4. The seventh measure contains notes A4, G4, and F#4. The eighth measure contains notes E4, D4, and C4. The ninth measure contains notes B3, A3, and G3. The tenth measure contains notes F#3, E3, and D3. The eleventh measure contains notes C3, B2, and A2. The twelfth measure contains notes G2, F#2, and E2. The thirteenth measure contains notes D2, C2, and B1. The fourteenth measure contains notes A1, G1, and F#1. The fifteenth measure contains notes E1, D1, and C1. The sixteenth measure contains notes B0, A0, and G0. The system ends with a double bar line.

Handwritten musical notation for the second system, showing two staves with notes and accidentals.

Handwritten musical notation for the second system. It consists of two staves. The top staff has a treble clef and a key signature of one sharp (F#). The bottom staff has a bass clef and a key signature of one sharp (F#). The music is in 3/4 time. The first measure contains notes G4, A4, B4, and C5. The second measure contains notes D5, E5, and F#5. The third measure contains notes G5, A5, and B5. The fourth measure contains notes C6, B5, and A5. The fifth measure contains notes G5, F#5, and E5. The sixth measure contains notes D5, C5, and B4. The seventh measure contains notes A4, G4, and F#4. The eighth measure contains notes E4, D4, and C4. The ninth measure contains notes B3, A3, and G3. The tenth measure contains notes F#3, E3, and D3. The eleventh measure contains notes C3, B2, and A2. The twelfth measure contains notes G2, F#2, and E2. The thirteenth measure contains notes D2, C2, and B1. The fourteenth measure contains notes A1, G1, and F#1. The fifteenth measure contains notes E1, D1, and C1. The sixteenth measure contains notes B0, A0, and G0. The system ends with a double bar line.

Handwritten musical notation for the third system, showing two staves with notes and accidentals.

Handwritten musical notation for the third system. It consists of two staves. The top staff has a treble clef and a key signature of one flat (Bb). The bottom staff has a bass clef and a key signature of one flat (Bb). The music is in 3/4 time. The first measure contains notes G4, A4, B4, and C5. The second measure contains notes D5, E5, and F#5. The third measure contains notes G5, A5, and B5. The fourth measure contains notes C6, B5, and A5. The fifth measure contains notes G5, F#5, and E5. The sixth measure contains notes D5, C5, and B4. The seventh measure contains notes A4, G4, and F#4. The eighth measure contains notes E4, D4, and C4. The ninth measure contains notes B3, A3, and G3. The tenth measure contains notes F#3, E3, and D3. The eleventh measure contains notes C3, B2, and A2. The twelfth measure contains notes G2, F#2, and E2. The thirteenth measure contains notes D2, C2, and B1. The fourteenth measure contains notes A1, G1, and F#1. The fifteenth measure contains notes E1, D1, and C1. The sixteenth measure contains notes B0, A0, and G0. The system ends with a double bar line.

Handwritten musical notation for the fourth system, showing two staves with notes and accidentals.

Handwritten musical notation for the fourth system. It consists of two staves. The top staff has a treble clef and a key signature of one sharp (F#). The bottom staff has a bass clef and a key signature of one sharp (F#). The music is in 3/4 time. The first measure contains notes G4, A4, B4, and C5. The second measure contains notes D5, E5, and F#5. The third measure contains notes G5, A5, and B5. The fourth measure contains notes C6, B5, and A5. The fifth measure contains notes G5, F#5, and E5. The sixth measure contains notes D5, C5, and B4. The seventh measure contains notes A4, G4, and F#4. The eighth measure contains notes E4, D4, and C4. The ninth measure contains notes B3, A3, and G3. The tenth measure contains notes F#3, E3, and D3. The eleventh measure contains notes C3, B2, and A2. The twelfth measure contains notes G2, F#2, and E2. The thirteenth measure contains notes D2, C2, and B1. The fourteenth measure contains notes A1, G1, and F#1. The fifteenth measure contains notes E1, D1, and C1. The sixteenth measure contains notes B0, A0, and G0. The system ends with a double bar line.

Handwritten musical notation for the first system, featuring a treble clef, a key signature of one flat, and a 2/4 time signature. The notation includes a melody line with a slur and a bass line with a slur, both containing eighth and quarter notes.

Handwritten musical notation for the second system, continuing the melody and bass lines from the first system.

Handwritten musical notation for the third system, continuing the melody and bass lines from the second system.

Handwritten musical notation for the fourth system, continuing the melody and bass lines from the third system.

and.
(*and.* →)

(*poco rit.*)

meno (fz)

(accel)

Handwritten musical notation for the first system. The treble clef staff contains a sequence of notes with accidentals: G4, A4, B4, C5, B4, A4, G4, F4, E4, D4, C4. The bass clef staff contains notes: G2, F2, E2, D2, C2, B1, A1, G1, F1, E1, D1, C1. There are slurs and accents over the notes.

Presto

Handwritten musical notation for the second system. The treble clef staff starts with a 2/4 time signature and contains notes: G4, A4, B4, C5, B4, A4, G4, F4, E4, D4, C4. The bass clef staff contains notes: G2, F2, E2, D2, C2, B1, A1, G1, F1, E1, D1, C1. There are slurs and accents over the notes.

Handwritten musical notation for the third system. The treble clef staff contains notes: G4, A4, B4, C5, B4, A4, G4, F4, E4, D4, C4. The bass clef staff contains notes: G2, F2, E2, D2, C2, B1, A1, G1, F1, E1, D1, C1. There are slurs and accents over the notes.

meno (fz)

accel.

(Presto)

Handwritten musical notation for the fourth system. The treble clef staff contains notes: G4, A4, B4, C5, B4, A4, G4, F4, E4, D4, C4. The bass clef staff contains notes: G2, F2, E2, D2, C2, B1, A1, G1, F1, E1, D1, C1. There are slurs and accents over the notes.

Handwritten musical notation for the first system. The treble clef is on the left. The key signature has one sharp (F#). The melody starts with a slur over the first two measures, containing notes G4, A4, B4, and C5. The rest of the system consists of four measures with rests.

Handwritten musical notation for the second system. The treble clef is on the left. The key signature has one sharp (F#). The melody starts with a slur over the first two measures, containing notes G4, A4, B4, and C5. The rest of the system consists of four measures with rests.

Handwritten musical notation for the third system. The treble clef is on the left. The key signature has one sharp (F#). The melody starts with a slur over the first two measures, containing notes G4, A4, B4, and C5. The rest of the system consists of four measures with rests.

Handwritten musical notation for the fourth system. The treble clef is on the left. The key signature has one sharp (F#). The melody starts with a slur over the first two measures, containing notes G4, A4, B4, and C5. The rest of the system consists of four measures with rests.

Handwritten musical notation for the first system. The treble clef staff contains two chords with a 'y' above them, followed by three measures with a slash. The bass clef staff contains notes with accidentals: #, b, b, #, b, b, #, b.

Handwritten musical notation for the second system. The treble clef staff contains two chords with a 'y' above them, followed by three measures with a slash. The bass clef staff contains notes with accidentals: b, b, b, #, b, b.

Handwritten musical notation for the third system. The treble clef staff contains two chords with a 'y' above them, followed by three measures with a slash. The bass clef staff contains notes with accidentals: b, b, #, #, #, #, b, #, b, #.

(großes mit ...)

Handwritten musical notation for the fourth system, enclosed in a box. The treble clef staff contains notes with accidentals: b, #, b, #, b, #, b, #. The bass clef staff contains notes with accidentals: b, #, b, #, b, #, b, #. To the right of the box is a small box containing 'G.P.'.

oder auch ~~ausgedr.~~ (wie ein Choral)

(Vollwerk)

(rit. -----)

Handwritten musical score for the first system. It consists of a piano part (treble and bass clefs) and a bass line (bass clef). The piano part has a 6/4 time signature. The notes are mostly whole and half notes, with some rests. The bass line is a simple melodic line with eighth and quarter notes.

Handwritten musical score for the second system. It continues the piano and bass lines from the first system. The piano part has a 6/4 time signature. The notes are mostly whole and half notes, with some rests. The bass line is a simple melodic line with eighth and quarter notes.

Handwritten musical score for the third system. It includes a 'lunga' marking above the piano part. The piano part has a 6/8 time signature. The notes are mostly whole and half notes, with some rests. The bass line is a simple melodic line with eighth and quarter notes.

Oberpostol
 P F. August
 Adolf Jahany

Fantasie No 2

breit (aber nicht schleppend)

Handwritten musical notation for the first system. It consists of a treble clef and a bass clef. The time signature is 4/4. The key signature has one sharp (F#). The notation includes a melodic line with a slur and a bass line with chords and a fermata. A large slur encompasses the entire system.

Handwritten musical notation for the second system. It consists of a treble clef and a bass clef. The notation includes a melodic line with a slur and a bass line with chords and a fermata. A large slur encompasses the entire system.

Handwritten musical notation for the third system. It consists of a treble clef and a bass clef. The notation includes a melodic line with a slur and a bass line with chords and a fermata. A large slur encompasses the entire system.

Handwritten musical notation for the first system. The treble clef staff contains notes: \sharp^{\flat} , \sharp , \sharp^{\flat} , \flat , \flat , \sharp , \flat , \flat . A triplet of three notes is indicated with a '3' below it. The bass clef staff contains notes: \sharp , \flat , \flat , \flat , \sharp . A circled 'b' is written above the first measure. A circled 'b' is written below the second measure.

Handwritten musical notation for the second system. The treble clef staff contains notes: \flat , \flat , \flat , \flat , \flat , \flat , \flat , \flat . The bass clef staff contains notes: \flat , \flat , \flat , \flat , \flat , \flat , \flat , \flat .

Handwritten musical notation for the third system. The treble clef staff contains notes: \sharp , \flat , \flat , \flat , \flat , \flat , \flat , \flat . The bass clef staff contains notes: \flat , \flat , \flat , \flat , \flat , \flat , \flat , \flat .

Handwritten musical notation for the fourth system. The treble clef staff contains notes: \sharp , \flat , \flat , \flat , \flat , \flat , \flat , \flat . The bass clef staff contains notes: \sharp , \flat , \flat , \flat , \flat , \flat , \flat , \flat . A circled 'b' is written above the first measure. A circled 'b' is written below the first measure.

Handwritten musical notation for the first system. The left staff shows a melodic line with a slur over three groups of notes, each with a '3' underneath. The right staff shows three groups of notes, each with a '3' underneath, all under a slur.

Handwritten musical notation for the second system. The left staff shows a melodic line with a slur over four groups of notes, each with a '3' underneath. The right staff shows three groups of notes, each with a '3' underneath, all under a slur.

Handwritten musical notation for the third system. The left staff shows a melodic line with a slur over four groups of notes, each with a '3' underneath. The right staff shows three groups of notes, each with a '3' underneath, all under a slur.

Handwritten musical notation for the fourth system. The left staff shows a melodic line with a slur over four groups of notes, each with a '3' underneath. The right staff shows two groups of notes, each with a '4' underneath, all under a slur. The word "meno" is written above the right staff.

sehr breit)

Handwritten musical notation for 'sehr breit'. It features a grand staff with two staves. The upper staff has a treble clef and a key signature of one sharp (F#). The lower staff has a bass clef and a key signature of one flat (Bb). The music consists of a few notes with long, sweeping lines above and below them, indicating a wide interval or a long duration. There are some markings like '4' and '(b)' in the lower staff.

sehr ruhig (einfach)

Handwritten musical notation for 'sehr ruhig (einfach)'. It features a grand staff with two staves. The upper staff has a treble clef and a key signature of one sharp (F#). The lower staff has a bass clef and a key signature of one flat (Bb). The music is simple and consists of a few notes with long, sweeping lines above and below them. There is a circled 'P' in the lower staff.

Handwritten musical notation for 'sehr ruhig (einfach)'. It features a grand staff with two staves. The upper staff has a treble clef and a key signature of one sharp (F#). The lower staff has a bass clef and a key signature of one flat (Bb). The music is simple and consists of a few notes with long, sweeping lines above and below them. There is a circled 'P' in the lower staff.

(poco rit.)

Handwritten musical notation for 'poco rit.'. It features a grand staff with two staves. The upper staff has a treble clef and a key signature of one sharp (F#). The lower staff has a bass clef and a key signature of one flat (Bb). The music is simple and consists of a few notes with long, sweeping lines above and below them. There is a circled 'P' in the lower staff.

Tempo

Handwritten musical notation for the first system. It features a treble clef and a 3/4 time signature. The key signature has one sharp (F#). The notation includes a guitar-style chord diagram with a bracket labeled '8' and a bass line with notes G# and B.

Handwritten musical notation for the second system. It features a treble clef and a 3/4 time signature. The key signature has two sharps (F#, C#). The notation includes a guitar-style chord diagram with a bracket labeled '8' and a bass line with notes F# and C#.

Handwritten musical notation for the third system. It features a treble clef and a 3/4 time signature. The key signature has two sharps (F#, C#). The notation includes a guitar-style chord diagram with a bracket labeled '8' and a bass line with notes F# and C#.

Handwritten musical notation for the fourth system. It features a treble clef and a 3/4 time signature. The key signature has two sharps (F#, C#). The notation includes a guitar-style chord diagram with a bracket labeled '8' and a bass line with notes F# and C#.

Handwritten musical notation for the first system. The upper staff is a treble clef with a guitar-style chord diagram. The lower staff is a bass clef with notes and accidentals: a whole note with a flat, a half note with a flat, and a whole note with a flat.

Handwritten musical notation for the second system. The upper staff is a treble clef with a guitar-style chord diagram. The lower staff is a bass clef with notes and accidentals: a whole note with a flat, a half note with a flat, and a whole note with a flat.

Handwritten musical notation for the third system. The upper staff is a treble clef with a guitar-style chord diagram. The lower staff is a bass clef with notes and accidentals: a whole note with a flat, a half note with a flat, and a whole note with a sharp.

Handwritten musical notation for the fourth system. The upper staff is a treble clef with a guitar-style chord diagram. The lower staff is a bass clef with notes and accidentals: a whole note with a sharp, a half note with a sharp, and a whole note with a sharp.

(rit....)

(rit) - (frei)

(ritato) (frei)

Zeit

Handwritten musical notation for the first system. It features a treble clef and a bass clef. The treble staff contains several notes, some with accidentals (sharps and flats). The bass staff contains notes and rests. There are some annotations like '000' and '0/0' above the notes. A bracket spans across the system.

(frei - mod...)

11

Handwritten musical notation for the second system. It shows a long melodic line with various accidentals (flats, sharps, double flats). A large slur covers the entire line. The marking '(frei - mod...)' is written above the staff, and 'rit. poco' is written below. The number '11' is written above the staff.

Zeit

Handwritten musical notation for the third system. It features a treble clef and a bass clef. The treble staff contains notes with accidentals. The bass staff contains notes and rests. A bracket spans across the system.

Handwritten musical notation for the fourth system. It features a treble clef and a bass clef. The treble staff contains notes with accidentals. The bass staff contains notes and rests. A bracket spans across the system.

(poco rit)

ruhig fließend

Handwritten musical notation for the first system, featuring a treble and bass clef with various notes and rests.

Handwritten musical notation for the second system, including a treble clef and a "5/4" time signature.

(poco rit)

Handwritten musical notation for the third system, showing a treble clef and a "5/4" time signature.

ad lib (ff) appassionata (ada frici) *romant*

Lento

Handwritten musical notation for the fourth system, enclosed in a box, with a treble clef and a "5/4" time signature.

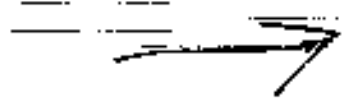
(rit) *meno*

Handwritten musical notation for the fifth system, showing a treble clef and a "5/4" time signature.

breiter

(immer rascher -)

Handwritten musical notation for the first system. The left staff is in treble clef with a key signature of one sharp (F#). The right staff is in bass clef. Both staves have a common time signature of 9/8. The music consists of two measures. The first measure shows a wide interval between the two staves, with notes connected by a slur. The second measure shows a similar wide interval. The notes are mostly quarter notes and half notes.



Handwritten musical notation for the second system. The left staff is in treble clef with a key signature of one flat (Bb). The right staff is in bass clef. Both staves have a common time signature of 9/8. The music consists of two measures. The first measure shows a wide interval between the two staves, with notes connected by a slur. The second measure shows a similar wide interval. The notes are mostly quarter notes and half notes.

Handwritten musical notation for the third system. The left staff is in treble clef with a key signature of two flats (Bb, Eb). The right staff is in bass clef. Both staves have a common time signature of 9/8. The music consists of two measures. The first measure shows a wide interval between the two staves, with notes connected by a slur. The second measure shows a similar wide interval. The notes are mostly quarter notes and half notes.

steigen (acc.)

(except →

Handwritten musical notation for the fourth system. It features a single staff in treble clef with a key signature of one sharp (F#) and a time signature of 3/4. The music consists of two measures. The first measure shows a wide interval between the two staves, with notes connected by a slur. The second measure shows a similar wide interval. The notes are mostly quarter notes and half notes.

Prato (ohne erregt) aber frei

Handwritten musical notation for the first system. It features a treble clef staff with a 4/4 time signature and a key signature of one sharp (F#). The bass clef staff contains notes with a '3' marking below them. To the right, there are two staves with notes and rests, including a 'b' marking above the first staff.

Handwritten musical notation for the second system. It features a treble clef staff with a 4/4 time signature and a key signature of one sharp (F#). The bass clef staff contains notes with a '3' marking below them. To the right, there are two staves with notes and rests, including a 'b' marking above the first staff.

Handwritten musical notation for the third system. It features a treble clef staff with a 4/4 time signature and a key signature of one sharp (F#). The bass clef staff contains notes with a '3' marking below them. To the right, there are two staves with notes and rests, including a 'b' marking above the first staff.

Handwritten musical notation for the fourth system. It features a treble clef staff with a 4/4 time signature and a key signature of one sharp (F#). The bass clef staff contains notes with a '3' marking below them. To the right, there are two staves with notes and rests, including a 'b' marking above the first staff.

Handwritten musical notation for the first system, featuring a treble and bass clef with various notes and rests.

Handwritten musical notation for the second system, including a circled '2' and a treble clef with a key signature of one sharp.

Handwritten musical notation for the third system, showing a treble and bass clef with complex melodic lines.

Handwritten musical notation for the fourth system, featuring a treble and bass clef with various note values and rests.

Handwritten musical notation for the fifth system, including a treble and bass clef with a double bar line and a decorative flourish.

Prestissimo

Handwritten musical notation for the first system. The top staff is in treble clef with a 6/4 time signature. It contains a series of chords, many with a 'y' above them, and a slur over the first five measures. The bottom staff is in bass clef and contains a sequence of notes with various accidentals (sharps, flats, naturals).

Handwritten musical notation for the second system. The top staff continues the chordal patterns with 'y' markings. The bottom staff continues the bass line with notes and accidentals.

Handwritten musical notation for the third system. The top staff shows a continuation of the chordal texture. The bottom staff features a more active bass line with frequent note changes and accidentals.

Handwritten musical notation for the fourth system. The top staff continues the chordal patterns. The bottom staff concludes the piece with a series of notes and accidentals.

Handwritten musical notation for the first system. The treble clef staff contains a sequence of chords, with some notes marked with accidentals (flats and naturals). The bass clef staff contains a sequence of notes, some with accidentals.

(2te + rit) ----- (ad lib) (11)

Handwritten musical notation for the second system, continuing the sequence of chords and notes from the first system.

(frei) Kordengartig (rubato) (allmächtige rit)

Handwritten musical notation for the third system, showing a transition or specific chordal structure with notes and accidentals.

Handwritten musical notation for the fourth system, including a 'mezzo' marking and a double bar line. The notation shows a sequence of notes and chords.

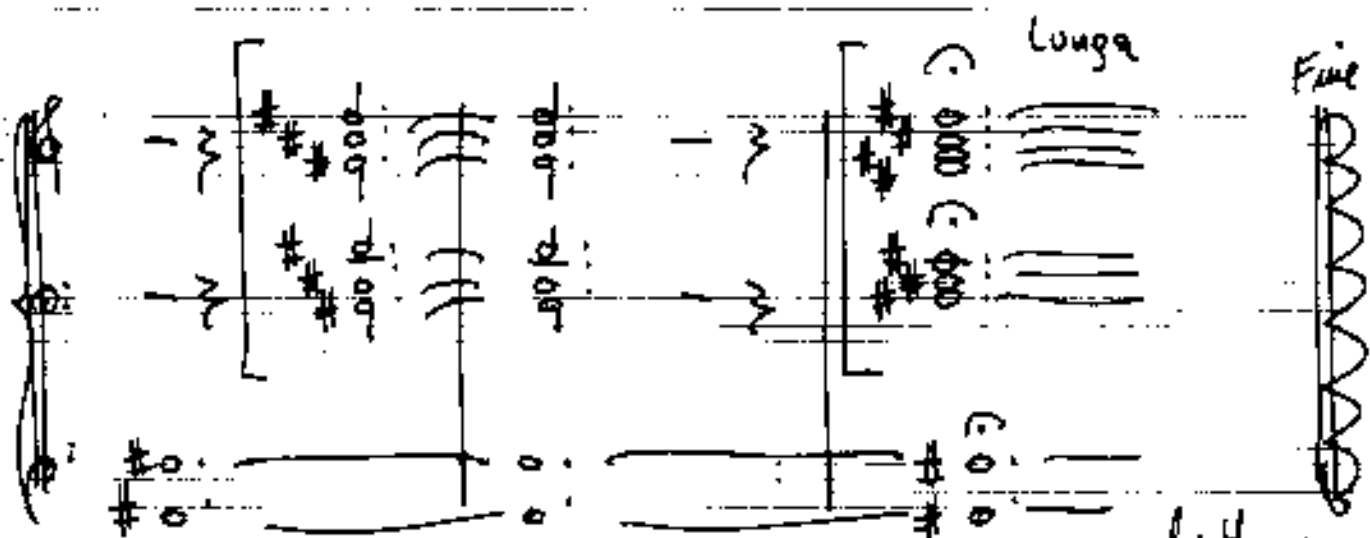
oder auch (wie ein Choral)

Handwritten musical notation for the first system. It consists of three staves. The top staff has a treble clef and contains notes with accidentals: #d, #d, b d, d. The middle staff has a bass clef and contains notes with accidentals: #d, #d, b d, d. The bottom staff has a bass clef and contains notes with accidentals: #, #. There are vertical bar lines and a double bar line at the end of the system.

Handwritten musical notation for the second system. It consists of three staves. The top staff has a treble clef and contains notes with accidentals: #d, #d, b d, d. The middle staff has a bass clef and contains notes with accidentals: #d, #d, b d, d. The bottom staff has a bass clef and contains notes with accidentals: #, #. There are vertical bar lines and a double bar line at the end of the system.

oder auch (wie ein Choral)

Handwritten musical notation for the third system. It consists of three staves. The top staff has a treble clef and contains notes with accidentals: #d, #d, b d, d. The middle staff has a bass clef and contains notes with accidentals: #d, #d, b d, d. The bottom staff has a bass clef and contains notes with accidentals: #, #. There are vertical bar lines and a double bar line at the end of the system.



Adh
 Vokralin
 1979
 9 August
 Oberpöschel