

L.v. BEETHOVEN



W.A. MOZART



NOTENHEFT

F. SCHUBERT



J. HAYDN



J. STRAUSS



AKR/7.-
Op. 1189

2 Große Orgelfantasien
über eine Tonfolge

August 1979

Adolf Scherbaum
Oberjosefthal

(Die Orgelfantasien beruhen auf einer zwölftonfolge)

(auffassungsmäßig möchte ich diese Fantasien
interpretiert haben wie (einen alten Choral mit Variationen)

Fantasie No. 1

Lento

ORGAN

Handwritten musical notation for the first system. It features a grand staff with treble and bass clefs. The music is in 4/4 time, marked "Lento" and "pp". The right hand has a melodic line with notes G4, A4, B4, C5, D5, E5, F5, G5, and A5. The left hand has a bass line with notes G3, F3, E3, D3, C3, B2, A2, and G2. A large slur covers the entire system.

Handwritten musical notation for the second system. It continues the grand staff notation. The right hand has notes G4, A4, B4, C5, D5, E5, F5, G5, and A5. The left hand has notes G3, F3, E3, D3, C3, B2, A2, and G2. A large slur covers the entire system.

Handwritten musical notation for the third system. It continues the grand staff notation. The right hand has notes G4, A4, B4, C5, D5, E5, F5, G5, and A5. The left hand has notes G3, F3, E3, D3, C3, B2, A2, and G2. A large slur covers the entire system.

Handwritten musical notation for the fourth system. It continues the grand staff notation. The right hand has notes G4, A4, B4, C5, D5, E5, F5, G5, and A5. The left hand has notes G3, F3, E3, D3, C3, B2, A2, and G2. A large slur covers the entire system.

Handwritten musical notation for the first system. The treble staff contains a melodic line with notes G4, A4, B4, and C5, marked with a '33' above the first measure and a slur. The bass staff contains a bass line with notes G3, A3, B3, and C4, also marked with a '33' above the first measure and a slur. The system concludes with a double bar line.

Handwritten musical notation for the second system. The treble staff contains a melodic line with notes G4, A4, B4, and C5, marked with a '33' above the first measure and a slur. The bass staff contains a bass line with notes G3, A3, B3, and C4, also marked with a '33' above the first measure and a slur. The system concludes with a double bar line.

Handwritten musical notation for the third system. The treble staff contains a melodic line with notes G4, A4, B4, and C5, marked with a '33' above the first measure and a slur. The bass staff contains a bass line with notes G3, A3, B3, and C4, also marked with a '33' above the first measure and a slur. The system concludes with a double bar line.

poco rit

Handwritten musical notation for the fourth system. The treble staff contains a melodic line with notes G4, A4, B4, and C5, marked with a '33' above the first measure and a slur. The bass staff contains a bass line with notes G3, A3, B3, and C4, also marked with a '33' above the first measure and a slur. The system concludes with a double bar line.

claus bewegt

Handwritten musical notation for the first system, featuring two staves with notes and accidentals, including a circled 'P' in the first measure of the upper staff.

Handwritten musical notation for the second system, featuring two staves with notes and accidentals, including time signatures 3/4 and 4/4 in the first two measures of the upper staff.

Handwritten musical notation for the third system, featuring two staves with notes and accidentals, including time signatures 3/4 and 4/4 in the first two measures of the upper staff.

Handwritten musical notation for the fourth system, featuring two staves with notes and accidentals, including time signatures 4/4 and 3/4 in the first two measures of the upper staff.

Handwritten musical notation for the first system. The treble staff contains chords with notes and stems, some with accents. The bass staff contains a melodic line with notes and stems, including a triplet of eighth notes.

Handwritten musical notation for the second system. The treble staff contains chords with notes and stems, some with accents. The bass staff contains a melodic line with notes and stems, including a triplet of eighth notes.

Handwritten musical notation for the third system. The treble staff contains chords with notes and stems, some with accents. The bass staff contains a melodic line with notes and stems, including a triplet of eighth notes.

Handwritten musical notation for the fourth system. The treble staff contains chords with notes and stems, some with accents. The bass staff contains a melodic line with notes and stems, including a triplet of eighth notes.

(poco rit)

Handwritten musical notation for the first system, featuring a treble and bass clef with various notes and accidentals. The notation includes a series of notes with sharps and flats, some grouped by brackets. The bass clef part shows a sequence of notes with flats and sharps, also bracketed.

(frei (wie ein Rez.)

Handwritten musical notation for the second system, including dynamic markings like 'mf' and 'steigerung'. The notation shows notes with sharps and flats, some with vertical lines above them. A large slur covers the notes, and the word 'steigerung' is written below with an arrow pointing right.

Handwritten musical notation for the third system, including dynamic markings like 'f' and 'ff'. The notation shows notes with sharps and flats, some with vertical lines above them. A large slur covers the notes, and the dynamic markings 'f' and 'ff' are circled.

sehr breit ausladend

Handwritten musical notation for the fourth system, including dynamic marking 'fff'. The notation shows notes with sharps and flats, some with vertical lines above them. A large slur covers the notes, and the dynamic marking 'fff' is written in the treble clef.

(frei (rubato) appassionata →

Handwritten musical notation for the first system, featuring a treble and bass clef with a series of chords and arpeggios. Brackets above the notes indicate groupings of 4 and 8 notes. A long slur covers the entire system.

Handwritten musical notation for the second system, continuing the sequence of chords and arpeggios. A bracket below the notes is labeled "(poco rit)". A long slur covers the entire system.

breiter

Presto (frei)

Handwritten musical notation for the third system, including a treble and bass clef with a series of chords and arpeggios. Brackets above the notes indicate groupings of 8 notes. A long slur covers the entire system.

Handwritten musical notation for the fourth system, continuing the sequence of chords and arpeggios. A bracket below the notes is labeled "(poco rit)". A long slur covers the entire system.

breit - aber nicht schleppend

Handwritten musical notation for the first system. The treble clef staff has a 3/4 time signature and contains three measures of eighth-note chords with a slur. The bass clef staff contains three measures of chords, each with a '9' below it, indicating a ninth chord. The chords are in D major, D minor, and D major.

Handwritten musical notation for the second system. The treble clef staff has a key signature of one flat (B-flat) and contains three measures of eighth-note chords with a slur. The bass clef staff contains three measures of chords, each with a '9' below it, indicating a ninth chord. The chords are in B-flat major, B-flat minor, and B-flat major.

Handwritten musical notation for the third system. The treble clef staff contains three measures of eighth-note chords with a slur. The bass clef staff contains three measures of chords, each with a '9' below it, indicating a ninth chord. The chords are in G major, G minor, and G major.

Handwritten musical notation for the fourth system. The treble clef staff contains three measures of eighth-note chords with a slur. The bass clef staff contains three measures of chords, each with a '9' below it, indicating a ninth chord. The chords are in A major, A minor, and A major. There are handwritten annotations: '5 2 6' above the second measure, '(#)' above the third measure, and '(gest...)' below the system.

(sehr langsam)

Handwritten musical notation for the first system. The treble clef part begins with a circled 'P' and a '5' above it. The bass clef part starts with a '4' above it. The music consists of two measures with various notes and rests, including a fermata over the first measure.

Handwritten musical notation for the second system, continuing the piece with similar notation and a fermata over the first measure.

Handwritten musical notation for the third system, continuing the piece with similar notation and a fermata over the first measure.

Handwritten musical notation for the fourth system, continuing the piece with similar notation and a fermata over the first measure.

Handwritten musical notation for the first system, featuring a treble and bass staff with notes and rests.

Handwritten musical notation for the second system, featuring a treble and bass staff with notes and rests.

Handwritten musical notation for the third system, featuring a treble and bass staff with notes and rests.

Handwritten musical notation for the fourth system, featuring a treble and bass staff with notes and rests.

Handwritten musical notation for the first system, featuring a treble and bass staff with notes, rests, and dynamic markings.

(poco rit)

Handwritten musical notation for the second system, continuing the piece with similar notation and dynamics.

fließend (zuebig)

Handwritten musical notation for the third system, including a *mf* dynamic marking and triplet figures.

Handwritten musical notation for the fourth system, featuring complex rhythmic patterns and triplets.

Handwritten musical score for the first system. The treble clef staff contains a melodic line with a large slur over a series of notes, including several triplets marked with a '3'. The bass clef staff provides a harmonic accompaniment with sustained notes and rests.

Handwritten musical score for the second system. The treble clef staff continues the melodic line with triplets and slurs. The bass clef staff features a more active accompaniment with eighth notes and rests.

Handwritten musical score for the third system. The treble clef staff shows a continuation of the melodic line with triplets and slurs. The bass clef staff has a steady accompaniment with sustained notes.

Handwritten musical score for the fourth system. The treble clef staff features a melodic line with triplets and slurs. The bass clef staff provides a harmonic accompaniment with sustained notes and rests.

reit-----

Adagio

subito (fff) appassionata (oder frei) bewegt (od. lib.)

Handwritten musical notation for the first system. The treble clef staff contains notes G4, A4, B4, C5, with a sharp sign above the first measure. The bass clef staff contains notes G3, A3, B3, C4, with a sharp sign above the first measure. Both staves have a '33' marking above the first measure. The system concludes with a double bar line.

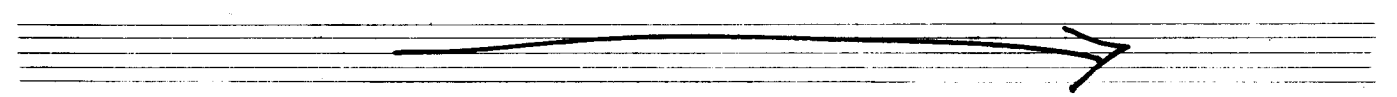
(immer unruhiger und rascher)

Handwritten musical notation for the second system. The treble clef staff contains notes G4, A4, B4, C5, with a sharp sign above the first measure. The bass clef staff contains notes G3, A3, B3, C4, with a sharp sign above the first measure. Both staves have a '33' marking above the first measure. The system concludes with a double bar line.

Handwritten musical notation for the third system. The treble clef staff contains notes G4, A4, B4, C5, with a flat sign above the first measure. The bass clef staff contains notes G3, A3, B3, C4, with a flat sign above the first measure. Both staves have a '33' marking above the first measure. The system concludes with a double bar line.



Handwritten musical notation for the fourth system. The treble clef staff contains notes G4, A4, B4, C5, with a flat sign above the first measure. The bass clef staff contains notes G3, A3, B3, C4, with a flat sign above the first measure. Both staves have a '33' marking above the first measure. The system concludes with a double bar line.



sdm bewegt (rubato)

Handwritten musical notation for the first system. It consists of two staves: a treble clef staff and a bass clef staff. The time signature is 3/4. The key signature has one sharp (F#). The notation includes a melodic line with a slur and a bass line with chords, separated by a repeat sign.

Handwritten musical notation for the second system, continuing the piece with similar melodic and harmonic structures.

Handwritten musical notation for the third system, showing a change in the bass line's harmonic accompaniment.

Handwritten musical notation for the fourth system, concluding the piece with a final melodic phrase.

Handwritten musical notation for the first system, consisting of a treble staff and a bass staff. The treble staff contains a melodic line with a slur over the first two measures and a fermata over the second measure. The bass staff contains a bass line with a slur over the first two measures. The system is divided into three measures by vertical bar lines.

Handwritten musical notation for the second system, consisting of a treble staff and a bass staff. The treble staff contains a melodic line with a slur over the first two measures and a fermata over the second measure. The bass staff contains a bass line with a slur over the first two measures. The system is divided into three measures by vertical bar lines.

Handwritten musical notation for the third system, consisting of a treble staff and a bass staff. The treble staff contains a melodic line with a slur over the first two measures and a fermata over the second measure. The bass staff contains a bass line with a slur over the first two measures. The system is divided into three measures by vertical bar lines.

Handwritten musical notation for the fourth system, consisting of a treble staff and a bass staff. The treble staff contains a melodic line with a slur over the first two measures and a fermata over the second measure. The bass staff contains a bass line with a slur over the first two measures. The system is divided into three measures by vertical bar lines.

molto
(*and.* →)

(*poco rit.*)

meno (frei

(accel

Handwritten musical notation for the first system. The treble staff contains a sequence of notes with slurs and accents, including a double bar line. The bass staff contains chords with accidentals: F#1, F#2, Gb2, F#1, F#2, Gb2, F#1, F#2, Gb2.

Presto

Handwritten musical notation for the second system. The treble staff starts with a 2/4 time signature and contains notes with slurs. The bass staff contains notes with slurs and accidentals: F#1, Gb1, F#1, Gb1, F#1, Gb1, F#1, Gb1.

Handwritten musical notation for the third system. The treble staff contains notes with slurs. The bass staff contains notes with slurs and accidentals: F#1, Gb1, F#1, Gb1, F#1, Gb1, F#1, Gb1.

meno (frei

accel.

(Presto

Handwritten musical notation for the fourth system. The treble staff contains notes with slurs. The bass staff contains notes with slurs and accidentals: F#1, Gb1, F#1, Gb1, F#1, Gb1, F#1, Gb1.

Handwritten musical notation for the first system. The treble clef part begins with a G4 quarter note, followed by a B4 quarter note with a flat, and an A4 quarter note with a flat. The bass clef part begins with a G3 quarter note with a sharp, followed by a B3 quarter note with a flat, and an A3 quarter note with a flat. The system continues with rests in the treble and a descending line of notes in the bass: G3, F3, E3, D3, C3, B2, A2, G2.

Handwritten musical notation for the second system. The treble clef part begins with a G4 quarter note, followed by a B4 quarter note with a flat, and an A4 quarter note with a flat. The bass clef part begins with a G3 quarter note with a flat, followed by a B3 quarter note with a flat, and an A3 quarter note with a flat. The system continues with rests in the treble and a descending line of notes in the bass: G3, F3, E3, D3, C3, B2, A2, G2.

Handwritten musical notation for the third system. The treble clef part begins with a G4 quarter note, followed by a B4 quarter note with a flat, and an A4 quarter note with a flat. The bass clef part begins with a G3 quarter note with a sharp, followed by a B3 quarter note with a flat, and an A3 quarter note with a flat. The system continues with rests in the treble and a descending line of notes in the bass: G3, F3, E3, D3, C3, B2, A2, G2.

Handwritten musical notation for the fourth system. The treble clef part begins with a G4 quarter note, followed by a B4 quarter note with a flat, and an A4 quarter note with a flat. The bass clef part begins with a G3 quarter note with a flat, followed by a B3 quarter note with a flat, and an A3 quarter note with a flat. The system continues with rests in the treble and a descending line of notes in the bass: G3, F3, E3, D3, C3, B2, A2, G2.

Handwritten musical notation for the first system. The treble staff contains chords with a 'y' marking above them. The bass staff contains a melodic line with various accidentals.

Handwritten musical notation for the second system. The treble staff has chords with 'y' markings. The bass staff continues the melodic line.

Handwritten musical notation for the third system. The treble staff has chords with 'y' markings. The bass staff continues the melodic line, ending with a double bar line.

(großes mit ...)

Handwritten musical notation for the fourth system. The treble staff has a melodic line with a 'y' marking. The bass staff has a melodic line. A box labeled 'G.P.' is at the end of the system.

(rit.-----)

Handwritten musical score for the first system, featuring three staves. The top staff has a treble clef and contains several chords and melodic fragments. The middle staff has a bass clef and contains similar chordal structures. The bottom staff has a bass clef and contains a melodic line with various accidentals and note values. The system is marked with a 'rit.' (ritardando) and a dashed line indicating a gradual deceleration.

Handwritten musical score for the second system, continuing the complex textures from the first system. It features three staves with dense chordal and melodic material. The notation includes many accidentals and complex rhythmic patterns, characteristic of Scherbaum's style.

Handwritten musical score for the third system, including performance instructions and a signature. The system starts with a treble clef and a key signature of one sharp (F#). The notation includes a 'lunga' (lunga) instruction, indicating a long, sustained note. The system concludes with a large, stylized signature and the name 'Adolf Scherbaum' written below it.

Fantasie No 2

breit (aber nicht schleppend)

Handwritten musical notation for the first system. The treble clef staff contains notes with accidentals: \sharp_1 , \sharp_1 , \flat_1 , \sharp_1 , \sharp_1 , \flat_1 , \sharp_1 . A triplet of notes is indicated by a bracket and the number 3. The bass clef staff contains notes with accidentals: \sharp_0 , \sharp_0 . A fermata is placed over the first measure of the second measure.

Handwritten musical notation for the second system. The treble clef staff contains notes with accidentals: \flat_1 , \flat_1 , \flat_1 , \flat_1 , \flat_1 , \flat_1 . The bass clef staff contains notes with accidentals: \flat_1 , \flat_1 , \flat_1 , \flat_1 , \flat_1 , \flat_1 .

Handwritten musical notation for the third system. The treble clef staff contains notes with accidentals: \sharp_1 , \flat_1 , \flat_1 , \flat_1 , \sharp_1 , \sharp_1 . The bass clef staff contains notes with accidentals: \sharp_1 , \sharp_1 , \sharp_1 , \sharp_1 , \sharp_1 , \sharp_1 . A double bar line is present at the end of the system.

Handwritten musical notation for the fourth system. The treble clef staff contains notes with accidentals: \sharp_1 , \sharp_1 , \sharp_1 , \sharp_1 , \sharp_1 , \sharp_1 . A triplet of notes is indicated by a bracket and the number 3. The bass clef staff contains notes with accidentals: \sharp_1 , \sharp_1 , \sharp_1 , \sharp_1 , \sharp_1 , \sharp_1 . A fermata is placed over the first measure of the second measure.

sehr breit)

Handwritten musical score for the first system. The right hand part consists of a wide interval starting on a whole note, moving to a half note, and then to a quarter note, with a sharp sign above the notes. The left hand part consists of a bass line with a whole note, a half note, and a quarter note, with a flat sign below the notes. The time signature is 4/4.

sehr ruhig (einfach)

Handwritten musical score for the second system. The right hand part consists of a simple melody with a whole note, a half note, and a quarter note, with a sharp sign above the notes. The left hand part consists of a bass line with a whole note, a half note, and a quarter note, with a sharp sign above the notes. The time signature is 4/4.

Handwritten musical score for the third system. The right hand part consists of a melody with a whole note, a half note, and a quarter note, with a flat sign above the notes. The left hand part consists of a bass line with a whole note, a half note, and a quarter note, with a flat sign above the notes. The time signature is 4/4.

(poco rit...)

Handwritten musical score for the fourth system. The right hand part consists of a melody with a whole note, a half note, and a quarter note, with a sharp sign above the notes. The left hand part consists of a bass line with a whole note, a half note, and a quarter note, with a sharp sign above the notes. The time signature is 4/4.

Tempo

Handwritten musical notation for the first system. The top staff is in treble clef and contains two measures of music. The first measure has a complex chord structure with a bracket underneath labeled '8'. The second measure has a similar structure with a bracket labeled '8' and three eighth notes below it. The word '3art' is written to the left of the first measure. The bottom staff is in bass clef and contains two measures. The first measure has a key signature of one sharp (F#) and a common time signature (C). The second measure has a common time signature (C). A long slur covers both measures in the bass staff.

Handwritten musical notation for the second system. The top staff is in treble clef and contains two measures of music. The first measure has a complex chord structure with a bracket underneath labeled '8'. The second measure has a similar structure with a bracket labeled '8' and three eighth notes below it. The bottom staff is in bass clef and contains two measures. The first measure has a key signature of one sharp (F#) and a common time signature (C). The second measure has a common time signature (C). A long slur covers both measures in the bass staff.

Handwritten musical notation for the third system. The top staff is in treble clef and contains two measures of music. The first measure has a complex chord structure with a bracket underneath labeled '8'. The second measure has a similar structure with a bracket labeled '8' and three eighth notes below it. The bottom staff is in bass clef and contains two measures. The first measure has a key signature of one sharp (F#) and a common time signature (C). The second measure has a common time signature (C). A long slur covers both measures in the bass staff.

Handwritten musical notation for the fourth system. The top staff is in treble clef and contains two measures of music. The first measure has a complex chord structure with a bracket underneath labeled '8'. The second measure has a similar structure with a bracket labeled '8' and three eighth notes below it. The bottom staff is in bass clef and contains two measures. The first measure has a key signature of one sharp (F#) and a common time signature (C). The second measure has a common time signature (C). A long slur covers both measures in the bass staff.

Handwritten musical notation for the first system. The upper staff (treble clef) contains a melodic line with a slur over the first two measures, followed by three measures of chords. The lower staff (bass clef) contains a bass line with a slur over the first two measures, followed by three measures of chords. The key signature has one flat (B-flat).

Handwritten musical notation for the second system. The upper staff (treble clef) contains a melodic line with a slur over the first two measures, followed by three measures of chords. The lower staff (bass clef) contains a bass line with a slur over the first two measures, followed by three measures of chords. The key signature has one flat (B-flat).

Handwritten musical notation for the third system. The upper staff (treble clef) contains a melodic line with a slur over the first two measures, followed by three measures of chords. The lower staff (bass clef) contains a bass line with a slur over the first two measures, followed by three measures of chords. The key signature has one flat (B-flat).

Handwritten musical notation for the fourth system. The upper staff (treble clef) contains a melodic line with a slur over the first two measures, followed by three measures of chords. The lower staff (bass clef) contains a bass line with a slur over the first two measures, followed by three measures of chords. The key signature has one flat (B-flat).

(rit....)

Handwritten musical notation for the first system. The treble clef contains a melodic line with several slurs and accidentals (sharps and flats). The bass clef contains a sustained chord with a sharp sign.

Handwritten musical notation for the second system. It includes a 'rit' marking above the treble clef. The treble clef has a melodic line with a fermata at the end. The bass clef has a sustained chord with a sharp sign.

breit — (frei)

Handwritten musical notation for the third system. It features complex rhythmic markings and a 'breit — (frei)' marking. The treble clef has a melodic line with various accidentals and a fermata. The bass clef has a sustained chord with a sharp sign.

(rubato / frei)

Handwritten musical notation for the fourth system. It includes 'rubato / frei', 'M', 'rit poco', and 'accel.' markings. The treble clef has a melodic line with a fermata. The bass clef has a melodic line with a fermata.

breit

Handwritten musical notation for the first system, featuring a treble and bass clef with a 6/4 time signature. The music consists of several chords and notes, with some notes marked with a 'b' (flat) and a 'd' (diagonal slash).

(frei — aael....)

11

(mit...)
poco

breit —

Handwritten musical notation for the third system, featuring a treble and bass clef with a 3/4 time signature. The music consists of several chords and notes, with some notes marked with a 'd' (diagonal slash).

Handwritten musical notation for the fourth system, featuring a treble and bass clef with a 3/4 time signature. The music consists of several chords and notes, with some notes marked with a 'b' (flat) and a 'd' (diagonal slash).

Handwritten musical notation for the first system. The treble staff contains a melodic line with a slur over two measures, featuring notes with flats and naturals. The bass staff provides accompaniment with a slur over two measures and a fermata at the end of each measure.

Handwritten musical notation for the second system. The treble staff features a complex melodic line with a slur and a fermata, including a four-measure rest. The bass staff has accompaniment with a slur and a fermata, and a four-measure rest.

Handwritten musical notation for the third system. The treble staff has a melodic line with a slur and a fermata. The bass staff has accompaniment with a slur and a fermata.

Handwritten musical notation for the fourth system. The treble staff has a melodic line with a slur and a fermata. The bass staff has accompaniment with a slur and a fermata, and a circled '2' below the staff.

Handwritten musical notation for the first system, featuring a treble and bass clef with various notes and rests.

Handwritten musical notation for the second system, including a treble clef and a 5/4 time signature.

(poco rit)

Handwritten musical notation for the third system, showing a treble clef and a 5/4 time signature.

Andante (ff) appassionata (ohne Frei) benetzt

(steigend)

Lento

Handwritten musical notation for the fourth system, including a treble clef, a 4/4 time signature, and dynamic markings.

breiter

(immer rascher -)



steigern (accel.)

(erregt →)

Presto (sehr bewegt) aber frei

Handwritten musical notation for the first system, measures 1-4. The music is in 4/4 time and features a treble and bass clef. The first measure contains a treble clef, a key signature of one sharp (F#), and a 4/4 time signature. The second measure has a treble clef, a key signature of one sharp, and a triplet of eighth notes. The third measure has a bass clef, a key signature of one flat (Bb), and a quarter note. The fourth measure has a treble clef, a key signature of one flat, and a quarter note.

Handwritten musical notation for the second system, measures 5-8. The music continues with treble and bass clefs. The fifth measure has a treble clef, a key signature of one flat, and a quarter note. The sixth measure has a treble clef, a key signature of one sharp, and a quarter note. The seventh measure has a bass clef, a key signature of one flat, and a quarter note. The eighth measure has a treble clef, a key signature of one flat, and a quarter note.

Handwritten musical notation for the third system, measures 9-12. The music continues with treble and bass clefs. The ninth measure has a treble clef, a key signature of one flat, and a quarter note. The tenth measure has a treble clef, a key signature of one sharp, and a quarter note. The eleventh measure has a bass clef, a key signature of one flat, and a quarter note. The twelfth measure has a treble clef, a key signature of one sharp, and a quarter note.

Handwritten musical notation for the fourth system, measures 13-16. The music continues with treble and bass clefs. The thirteenth measure has a treble clef, a key signature of one flat, and a quarter note. The fourteenth measure has a treble clef, a key signature of one flat, and a quarter note. The fifteenth measure has a bass clef, a key signature of one flat, and a quarter note. The sixteenth measure has a treble clef, a key signature of one flat, and a quarter note.

Handwritten musical notation for the first system, featuring two staves with complex rhythmic and melodic patterns. The notation includes various note values, rests, and dynamic markings.

Handwritten musical notation for the second system, including a circled '5:' marking and a double bar line. The notation continues the complex rhythmic and melodic patterns from the first system.

Handwritten musical notation for the third system, showing intricate melodic lines and rhythmic structures. The notation includes various note values, rests, and dynamic markings.

Handwritten musical notation for the fourth system, featuring complex rhythmic and melodic patterns. The notation includes various note values, rests, and dynamic markings.

Handwritten musical notation for the fifth system, concluding with a double bar line and a decorative flourish. The notation includes various note values, rests, and dynamic markings.

Prestissimo

Handwritten musical notation for the first system, measures 1-2. Treble clef, 6/8 time signature. The right hand plays chords with a rhythmic pattern of eighth notes. The left hand plays a bass line with various accidentals.

Handwritten musical notation for the second system, measures 3-4. Treble clef, 6/8 time signature. The right hand continues with chords and eighth notes. The left hand has a more active bass line.

Handwritten musical notation for the third system, measures 5-6. Treble clef, 6/8 time signature. The right hand features a descending eighth-note scale. The left hand has a simple bass line.

Handwritten musical notation for the fourth system, measures 7-8. Treble clef, 6/8 time signature. The right hand plays chords with eighth notes. The left hand has a steady bass line.

Handwritten musical notation for the first system. The treble clef staff contains a series of chords, with accidentals b and $\sharp b$ above the notes. The bass clef staff contains a sequence of notes: b , \flat , \flat , \flat , \flat , \flat , \flat , \flat , \flat , \flat , \flat , \flat .

(2te + rit) ----- (ad. lib) $\text{||:}\text{||}$

Handwritten musical notation for the second system. Above the staves are performance instructions: "(2te + rit)" and "(ad. lib) $\text{||:}\text{||}$ ". The treble clef staff contains chords with accidentals b and \sharp . The bass clef staff contains notes: b , \flat , \flat , \flat , \flat , \flat , \flat , \flat , \flat , \flat , \flat , \flat .

(frei) Kadenzenartig (subito) (alluvahländ. rit.) rit.

Handwritten musical notation for the third system. Above the staves are performance instructions: "(frei) Kadenzenartig (subito)", "(alluvahländ. rit.)", and "rit.". The treble clef staff contains notes with accidentals \sharp and \flat , and a circled \flat . The bass clef staff contains notes with accidentals \sharp and \flat , and a circled \flat .

meno

Handwritten musical notation for the fourth system. Above the staves is the instruction "meno". The treble clef staff contains notes with accidentals \sharp and \flat , and a circled \flat . The bass clef staff contains notes with accidentals \sharp and \flat , and a circled \flat .

sehr breit (wie ein Choral)

Handwritten musical score for the first system. It consists of three staves: a treble clef staff at the top, a bass clef staff in the middle, and a bass clef staff at the bottom. The treble staff contains notes with accidentals (sharps and naturals) and stems, with some notes beamed together. The middle staff contains notes with accidentals and stems, also with some beaming. The bottom staff contains notes with accidentals and stems, with some notes beamed together. There are some markings like '6 #' and '4 #' on the left side of the staves.

Handwritten musical score for the second system. It consists of three staves: a treble clef staff at the top, a bass clef staff in the middle, and a bass clef staff at the bottom. The treble staff contains notes with accidentals and stems, with some notes beamed together. The middle staff contains notes with accidentals and stems, with some notes beamed together. The bottom staff contains notes with accidentals and stems, with some notes beamed together. There is a circled note in the middle staff.

großes (zu.....)

Handwritten musical score for the third system. It consists of three staves: a treble clef staff at the top, a bass clef staff in the middle, and a bass clef staff at the bottom. The treble staff contains notes with accidentals and stems, with some notes beamed together. The middle staff contains notes with accidentals and stems, with some notes beamed together. The bottom staff contains notes with accidentals and stems, with some notes beamed together.

Handwritten musical score for '2 große Capricentrasien über eine Tonfolge, SWV 1189 (1979)' by Adolf Scherbaum. The score is written on three staves. The top two staves are for the right hand, and the bottom staff is for the left hand. The key signature is one sharp (F#). The piece is marked 'Lunga' and ends with 'Fine'. The notation includes various rhythmic values, accidentals, and dynamic markings.

Adolf Scherbaum
1979

9 August
Oberperfenthal