

**Notenheft**

Pedal Pedal aus.

# Sonate für Klavier

(Satz I)

8. Oktober 1979

Adolf Scherbaum

pesante (schmerzlich)

R 153-1196

F 153 Scherbaum 1196



4  
4

Handwritten musical notation for the first system. It consists of two staves. The upper staff is in treble clef and begins with a circled key signature of two sharps (F# and C#). The notation includes several measures with chords and melodic lines, some marked with accents (^) and a fermata. The lower staff contains chordal accompaniment with various voicings and some slurs.

Handwritten musical notation for the second system. It consists of two staves. The upper staff is in treble clef and shows complex chordal structures with many notes, some marked with accents (^) and a fermata. The lower staff is in bass clef and contains chordal accompaniment with various voicings and some slurs.

Handwritten musical notation for the third system. It consists of two staves. The upper staff is in treble clef and shows complex chordal structures with many notes, some marked with accents (^) and a fermata. The lower staff is in bass clef and contains chordal accompaniment with various voicings and some slurs.

*dim*

*pp*

*ruhig*

*p*

*f*

*p*

*f*

*f*

*p*

Handwritten musical notation for the first system. The treble clef staff contains a circled '1' and a '3' over a '4' time signature. The music consists of three measures with notes and rests. The bass clef staff contains notes with accidentals (sharps and flats) and rests.

Handwritten musical notation for the second system. The treble clef staff has a melodic line with a slur and an accent. The bass clef staff has chords with accidentals and a slur.

Handwritten musical notation for the third system. The treble clef staff has a fast-moving melodic line with a slur and an accent. The bass clef staff has chords with accidentals and a slur.

Handwritten musical notation for the first system, featuring a treble and bass staff with notes and a piano accompaniment below.

Handwritten musical notation for the second system, including the instruction "sehr breit".

Handwritten musical notation for the third system, including the instruction "poco rit".

Handwritten musical notation for the fourth system, including the instruction "tiefer Cluster".

immer näher werden und  
erregter

1

(tiefe cluster)

mp (auch Schläge)

!

(schon erregt (aber noch  
zue).)

ff =

ff =



Handwritten musical notation for the first system. The treble clef staff contains a melodic line with several slurs and accidentals (sharps). The bass clef staff features a long, sustained bass line with some chordal accompaniment indicated by vertical lines and notes.

*sehr energ.*

Handwritten musical notation for the second system. The treble clef staff has a series of chords with vertical lines. The bass clef staff contains complex chordal structures with many notes and accidentals. Performance instructions include *sehr energ.* and *arco*.

Handwritten musical notation for the third system. The treble clef staff continues with chords and vertical lines. The bass clef staff shows further development of the chordal accompaniment with various accidentals and note groupings.

Handwritten musical notation for the fourth system. The treble clef staff has a melodic line with a triplet of notes. The bass clef staff features a complex chordal structure. Performance instructions include *poco rit.* and *Pedal*.

(frei)

fff

*rit*

*Pedal*

*rit*

*Klingen lassen*

*Pedal*

*Klingen lassen*

*breit* ^

*fff*

*sehr breit (aber nicht schlappend)*

Handwritten musical notation for the first system, consisting of two staves. The upper staff contains several notes with accents and rests. The lower staff features a series of notes with wavy lines underneath, suggesting a tremolo or rapid oscillation. There are also some numerical markings like '8' in brackets.

(rit.-----) Tempo  $\text{\textcircled{1}}$

Handwritten musical notation for the second system, consisting of two staves. It begins with a 4/4 time signature. The notation includes notes with accents, rests, and some complex rhythmic patterns. There are also some numerical markings like '6' and '4'.

Handwritten musical notation for the third system, consisting of two staves. The upper staff has notes with accents and rests. The lower staff features a series of notes with wavy lines underneath, similar to the first system. There are also some numerical markings like '7' and '8'.



Sempre diu >

Handwritten musical notation for the first system. The treble staff contains a melodic line with a slur over four notes: G4 (flat), A4 (flat), B4 (flat), and C5 (sharp). The bass staff contains a bass line with a slur over two notes: G3 (flat) and A3 (flat). The system concludes with a double bar line.

Handwritten musical notation for the second system. The treble staff begins with a circled 'f' dynamic marking. It features a series of chords with slurs and accents. The bass staff contains corresponding chords with slurs and accents. The system concludes with a double bar line.

Handwritten musical notation for the third system. The treble staff begins with a circled 'mf' dynamic marking. It features a series of chords with slurs and accents. The bass staff contains corresponding chords with slurs and accents. The system concludes with a double bar line.

graves rit + dim

Handwritten musical notation for the first system, featuring a treble and bass clef with various notes, rests, and dynamic markings like 'pp' and 'pppp'.

Handwritten musical notation for the second system, including a treble and bass clef, notes, rests, and dynamic markings such as 'pp' and 'pppp'.

ADAGIO

Handwritten musical notation for the third system, marked 'ADAGIO', with a treble and bass clef, notes, rests, and dynamic markings like 'ppp' and 'ad lib.'.

Handwritten musical notation for the fourth system, including a treble and bass clef, notes, rests, and dynamic markings such as 'pppp' and 'Cung'.

Dez. 1979  
Adolf Scherbaum

Sonate für Klavier

Satz 2

lento



*pesante*

*(poco rit)*

Handwritten musical notation for the first system. The upper staff contains a melodic line with a circled *pp* dynamic marking and a triplet of eighth notes. The lower staff contains a bass line with a sharp sign and a circled *o* symbol.

Handwritten musical notation for the second system. The upper staff features a series of notes with slurs and accents above them. The lower staff contains a bass line with a sharp sign and a circled *o* symbol.

Handwritten musical notation for the third system. The upper staff contains a series of notes with slurs. The lower staff contains a bass line with a sharp sign and a circled *o* symbol.

Handwritten musical notation for the fourth system. The upper staff contains a series of notes with slurs and accents above them. The lower staff contains a bass line with a flat sign and a circled *o* symbol. The system concludes with a double bar line and a circled *o* symbol.

*pesante*

*accel.*

sehr langsam - bewegt

Handwritten musical notation for the first system. The treble clef staff contains a quarter note G4, a quarter note A4, a quarter note B4, and a quarter note C5, all beamed together. The bass clef staff contains a triplet of eighth notes: G3, A3, B3. There are various markings above the notes, including accents and slurs.

Handwritten musical notation for the second system. The treble clef staff contains a quarter note G4, a quarter note A4, a quarter note B4, and a quarter note C5, all beamed together. The bass clef staff contains a triplet of eighth notes: G3, A3, B3. There are various markings above the notes, including accents and slurs.

Handwritten musical notation for the third system. The treble clef staff contains a quarter note G4, a quarter note A4, a quarter note B4, and a quarter note C5, all beamed together. The bass clef staff contains a triplet of eighth notes: G3, A3, B3. There are various markings above the notes, including accents and slurs.

Handwritten musical notation for the fourth system. The treble clef staff contains a quarter note G4, a quarter note A4, a quarter note B4, and a quarter note C5, all beamed together. The bass clef staff contains a triplet of eighth notes: G3, A3, B3. There are various markings above the notes, including accents and slurs.





Handwritten musical notation for the first system. The treble staff contains a melodic line with a sharp sign and a slur. The bass staff contains a bass line with a circled double sharp sign. Dynamic markings include accents and a hairpin crescendo.

Handwritten musical notation for the second system. The treble staff contains a melodic line with a flat sign and a slur. The bass staff contains a bass line with a slur. Dynamic markings include accents and a hairpin crescendo.

haut

Handwritten musical notation for the third system. The treble staff contains a melodic line with a circled double sharp sign and a slur. The bass staff contains a bass line with a slur. Dynamic markings include accents and a hairpin crescendo.

Handwritten musical notation for the fourth system. The treble staff contains a melodic line with a sharp sign and a slur. The bass staff contains a bass line with a slur. Dynamic markings include accents and a hairpin crescendo.

*etwas ruhiger*

Handwritten musical notation for the first system. The treble clef staff contains a melodic line with notes G4, A4, B4, C5, B4, A4, G4, and a half rest. The bass clef staff contains chords: G2-B2-D3, G2-B2-D3, G2-B2-D3, and G2-B2-D3.

Handwritten musical notation for the second system. The treble clef staff contains notes G4, A4, B4, C5, B4, A4, G4, and a half rest. The bass clef staff contains chords: G2-B2-D3, G2-B2-D3, G2-B2-D3, and G2-B2-D3.

Handwritten musical notation for the third system. The treble clef staff contains notes G4, A4, B4, C5, B4, A4, G4, and a half rest. The bass clef staff contains chords: G2-B2-D3, G2-B2-D3, G2-B2-D3, and G2-B2-D3. A dynamic marking 'f' is present above the second measure.

*(poco rit)*

Handwritten musical notation for the fourth system. The treble clef staff contains notes G4, A4, B4, C5, B4, A4, G4, and a half rest. The bass clef staff contains chords: G2-B2-D3, G2-B2-D3, G2-B2-D3, and G2-B2-D3. A dynamic marking 'f' is present above the second measure.



*ruhig*

*immer langsamer — leiser*

Tempo 1 (sehr bewegt)

Handwritten musical score for the first system, measures 1-2. The right hand has a circled *ppp* dynamic marking. The left hand has a *G* marking above the first measure. The music is in G major, 4/4 time.

Handwritten musical score for the second system, measures 3-4. The left hand has a *G* marking above the second measure. The right hand has a *grobe Herbeugung* annotation with an arrow pointing to the right.

Handwritten musical score for the third system, measures 5-6. The right hand has a *pp* dynamic marking. The left hand has a *G* marking above the second measure.

Handwritten musical score for the fourth system, measures 7-8. The right hand has a circled *p* dynamic marking. The left hand has a *G* marking above the second measure. The number *25* is written below the system.

Handwritten musical notation for the first system, measures 1-2. The right hand has a melodic line with slurs and accents, and the left hand has a bass line with chords and slurs. A circled '77' is in the first measure of the right hand.

Handwritten musical notation for the second system, measures 3-4. Similar to the first system, with melodic and bass lines. A circled '77' is in the first measure of the right hand.

Handwritten musical notation for the third system, measures 5-6. Includes a circled '77' in the right hand and a circled '77' in the left hand. The notation is more complex with many slurs and accents.

Handwritten musical notation for the fourth system, measures 7-8. The right hand has a melodic line with slurs and accents, and the left hand has a bass line with chords and slurs. A circled '77' is in the first measure of the right hand.



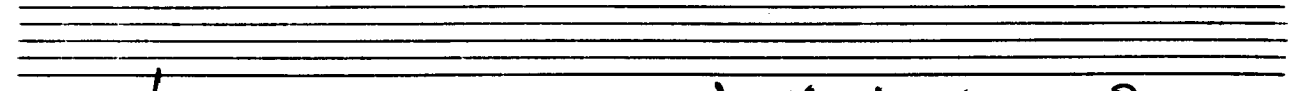
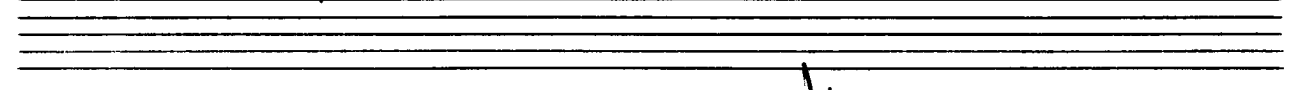
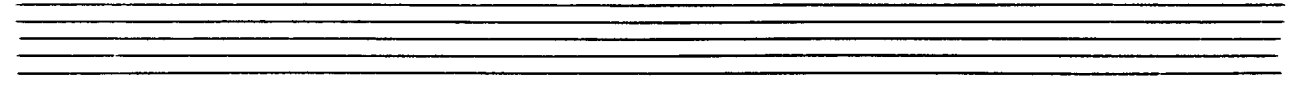
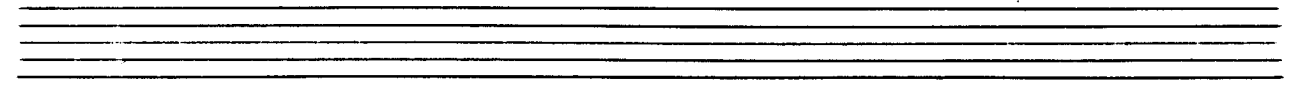
Handwritten musical notation for the first system. The treble clef staff contains a melodic line with notes: G4, A4, Bb4, C5, Bb4, Ab4, G4, F#4, E4, D4, C4. The bass clef staff contains a wavy line representing a tremolo or sustained low notes, with a handwritten 'pp' dynamic marking and a '3/4' time signature.

Handwritten musical notation for the second system. The bass clef staff contains a wavy line, likely representing a tremolo or sustained low notes, with a handwritten 'pp' dynamic marking.

Handwritten musical notation for the third system. The treble clef staff contains a melodic line with notes: G4, A4, Bb4, C5, Bb4, Ab4, G4, F#4, E4, D4, C4. The bass clef staff contains a wavy line representing a tremolo or sustained low notes, with a handwritten 'pp' dynamic marking.

Handwritten musical notation for the fourth system. The treble clef staff contains a melodic line with notes: G4, A4, Bb4, C5, Bb4, Ab4, G4, F#4, E4, D4, C4. The bass clef staff contains a wavy line representing a tremolo or sustained low notes, with a handwritten 'pp' dynamic marking.

Handwritten musical notation for the fifth system. The treble clef staff contains a melodic line with notes: G4, A4, Bb4, C5, Bb4, Ab4, G4, F#4, E4, D4, C4. The bass clef staff contains a wavy line representing a tremolo or sustained low notes, with a handwritten 'pp' dynamic marking.





*ruhig*

*immer ruhiger und leiser*



Andagio

Handwritten musical notation for the first system. The treble clef staff begins with a 4/4 time signature and a piano piano (pp) dynamic marking. The melody consists of a series of notes, some with slurs and accents. The bass clef staff provides harmonic support with chords and some melodic fragments.

Handwritten musical notation for the second system. The treble clef staff continues the melodic line with various note values and slurs. The bass clef staff continues with chords and melodic lines, including some accidentals.

Handwritten musical notation for the third system. The treble clef staff features a more complex rhythmic pattern with slurs and dynamics like 'pp' and 'b'. The bass clef staff has a dense accompaniment of chords, some with slurs.

Handwritten musical notation for the fourth system. The treble clef staff concludes the melodic phrase. The bass clef staff continues with chords and slurs, ending with a final cadence.

*pesante*

Handwritten musical score for the first system. It consists of two staves. The upper staff is in treble clef and contains a series of chords and notes, with a circled 'ff' dynamic marking. The lower staff is in bass clef and contains dense chordal textures. There are various accidentals and slurs throughout the system.

Handwritten musical score for the second system. It consists of two staves. The upper staff is in treble clef and contains a series of chords and notes, with a circled 'ff' dynamic marking. The lower staff is in bass clef and contains dense chordal textures. There are various accidentals and slurs throughout the system.

*(poco rit)*

Handwritten musical score for the third system. It consists of two staves. The upper staff is in treble clef and contains a series of chords and notes, with a circled 'pp' dynamic marking. The lower staff is in bass clef and contains dense chordal textures. There are various accidentals and slurs throughout the system.

*distinto - Allegro*

Handwritten musical score for the fourth system. It consists of two staves. The upper staff is in treble clef and contains a series of chords and notes, with a circled 'ppp' dynamic marking. The lower staff is in bass clef and contains dense chordal textures. There are various accidentals and slurs throughout the system.



Handwritten musical notation for the first system, measures 1-4. The system consists of two staves. The upper staff is in treble clef with a key signature of one sharp (F#) and a common time signature (C). It contains four measures of music with various notes, rests, and slurs. The lower staff is in bass clef and contains four measures of music, including chords and slurs. There are several accents (^) above notes in both staves.

Handwritten musical notation for the second system, measures 5-7. The system consists of two staves. The upper staff is in treble clef with a key signature of one flat (Bb) and a common time signature (C). It contains three measures of music with notes and slurs. The lower staff is in bass clef and contains three measures of music, including chords and slurs. There are several accents (^) above notes in both staves.

Handwritten musical notation for the third system, measures 8-10. The system consists of two staves. The upper staff is in treble clef with a key signature of one sharp (F#) and a common time signature (C). It contains three measures of music with notes, slurs, and a '9' marking below the first measure. The lower staff is in bass clef and contains three measures of music, including chords and slurs. There are several accents (^) above notes in both staves.

Handwritten musical notation for the fourth system, measures 11-14. The system consists of two staves. The upper staff is in treble clef with a key signature of one flat (Bb) and a common time signature (C). It contains four measures of music with notes and slurs. The lower staff is in bass clef and contains four measures of music, including chords and slurs. There are several accents (^) above notes in both staves.

Handwritten musical notation for the first system. The treble clef staff contains three measures of music with notes and accidentals (sharps and naturals) and accents (^). The bass clef staff contains notes and a wavy line with a downward arrow and a flat symbol (↓b). There are also some vertical lines and a small circle with a dot in the bass staff.

Handwritten musical notation for the second system. The treble clef staff starts with a piano (pp) dynamic marking. It features a long melodic line with a slur and accents (^) over several notes. The bass clef staff has notes and a flat symbol (b). There are also some vertical lines and a small circle with a dot in the bass staff.

Handwritten musical notation for the third system. The treble clef staff features a forte (f) dynamic marking. It shows a melodic line with a slur and accents (^) over several notes. The bass clef staff has notes and a flat symbol (b). There are also some vertical lines and a small circle with a dot in the bass staff.

Handwritten musical notation for the fourth system. The treble clef staff features a forte (f) dynamic marking. It shows a melodic line with a slur and accents (^) over several notes. The bass clef staff has notes and a flat symbol (b). There are also some vertical lines and a small circle with a dot in the bass staff.

hart stacc.

*meno (appassionata)*

*Sempre cresc. →*

Handwritten musical notation for the first system. The treble staff begins with a circled 'F' and contains notes with flats and sharps, including a sharp sign on the final note. The bass staff contains a series of notes with slurs and accents.

Handwritten musical notation for the second system. The treble staff contains notes with flats and sharps, including a sharp sign on the final note. The bass staff contains a series of notes with slurs and accents.

Handwritten musical notation for the third system. The treble staff contains notes with flats and sharps, including a sharp sign on the final note. The bass staff contains a series of notes with slurs and accents.



Sonata appassionata

Handwritten musical notation for the first system. The treble clef staff contains chords with various accidentals (sharps, flats, naturals) and slurs. The bass clef staff features a melodic line with a 'Pedal' marking and a long slur. The key signature has one sharp (F#).

Handwritten musical notation for the second system. The treble clef staff contains chords with various accidentals and slurs. The bass clef staff features a melodic line with a 'Pedal' marking and a long slur. The key signature has one sharp (F#).

Handwritten musical notation for the third system. The treble clef staff contains chords with various accidentals and slurs. The bass clef staff features a melodic line with a 'Pedal' marking and a long slur. A circled note is present in the bass staff. The tempo marking 'poco rit' is written above the staff. The key signature has one sharp (F#).

*Prestissimo*

Handwritten musical notation for the first system. The system consists of two staves. The left staff begins with a piano dynamic marking ( $pp$ ) and a crescendo marking ( $cresc.$ ). The right staff contains a melodic line with a slur over the first two measures and a fermata over the second measure. The left staff contains a bass line with a slur over the first two measures. The system is enclosed in a large hand-drawn oval.

Handwritten musical notation for the second system. The system consists of two staves. The left staff contains a melodic line with a slur over the first two measures and a fermata over the second measure. The right staff contains a bass line with a slur over the first two measures. The system is enclosed in a large hand-drawn oval.

Handwritten musical notation for the third system. The system consists of two staves. The left staff contains a melodic line with a slur over the first two measures and a fermata over the second measure. The right staff contains a bass line with a slur over the first two measures. The system is enclosed in a large hand-drawn oval.

Handwritten musical notation for the first system, measures 1-4. The right hand plays a sequence of chords: G4-A4-B4, A4-B4-C5, B4-C5-D5, and C5-D5-E5. The left hand plays a descending eighth-note line: G3-F#3-E3, D3-C#3-B2, A2-G#2-F#2, and E2-D2-C2. A large slur covers both staves.

Handwritten musical notation for the second system, measures 5-8. The right hand continues with chords: D5-E5-F#5, E5-F#5-G5, D5-E5-F#5, and E5-F#5-G5. The left hand continues with chords: G#2-A2-B2, A2-B2-C3, G#2-A2-B2, and A2-B2-C3. A large slur covers both staves.

Handwritten musical notation for the third system, measures 9-12. The right hand plays chords: G4-A4-B4, A4-B4-C5, G4-A4-B4, and A4-B4-C5. The left hand plays chords: G#2-A2-B2, A2-B2-C3, G#2-A2-B2, and A2-B2-C3. A large slur covers both staves.

Handwritten musical notation for the fourth system, measures 13-16. The right hand plays chords: G4-A4-B4, A4-B4-C5, G4-A4-B4, and A4-B4-C5. The left hand plays chords: G#2-A2-B2, A2-B2-C3, G#2-A2-B2, and A2-B2-C3. A large slur covers both staves.



Handwritten musical notation for the first system. It consists of two staves. The upper staff is in treble clef and contains several measures of music with notes and rests. A measure in the middle of the system is circled. The lower staff is in bass clef and contains corresponding notes and rests. There are some handwritten annotations, including a 'b' (flat) and a 'b' (basso) written below the staff.

Handwritten musical notation for the second system. It consists of two staves. The upper staff is in treble clef and contains several measures of music with notes and rests. The lower staff is in bass clef and contains corresponding notes and rests. There are some handwritten annotations, including a circled measure at the beginning of the system.

Handwritten musical notation for the third system. It consists of two staves. The upper staff is in treble clef and contains several measures of music with notes and rests. The lower staff is in bass clef and contains corresponding notes and rests. The word "Pesante" is written above the first measure of the upper staff, and "Fine" is written above the first measure of the lower staff. A large, stylized signature is written across the lower staff, and the date "Oktober 1949" is written in the middle of the system.