

L.v. BEETHOVEN



W.A. MOZART



# NOTENHEFT

F. SCHUBERT



J. HAYDN



J. STRAUSS



(Zusammengefaßt — (aus verschiedenen Zeiten)  
sind 14 Teile (keine Zwölftonmusik — sondern  
gefühlsmäßig betonte Eindrücke aus dem Leben —  
komponiert in freier Tonalität) —

8 Teile für Flöte und Harfe —

1979

Adolf Scherbaum

Jeder Solist ein eigenes Mikrophon  
mit Verstärkeranlage.  
(sehr viel Hall!) —

(Komposition — wieder einmal in freier  
Tonalität geschrieben.)

geschrieben und gewidmet in

herzlichster Zuneigung Frau Hildegard  
Hinterreiter

F 153 Scherbaum

1197

Dezember

1979 Adolf Scherbaum

Adolf Scherbaum, 8 Teile für Flöte und Harfe, SWV 1197 (1979)  
© 2010 Inge Adamiker-Scherbaum. Alle Rechte vorbehalten.

# Teil 1

frei ruhig

①

Flöte  
Harfe

Lento

②

appassionata (rubato)

③

ff

(gut + dein)

Handwritten musical score for measures 4 and 5. The score is written on two staves: a treble clef staff (top) and a bass clef staff (bottom). The key signature is one flat (B-flat). Measure 4 contains a melodic line in the treble staff with notes G4, A4, Bb4, C5, and a half note G4. The bass staff has a bass line with notes G2, A2, Bb2, C3. Measure 5 continues the melodic line in the treble staff with notes G4, A4, Bb4, C5, and a half note G4. The bass staff has a bass line with notes G2, A2, Bb2, C3. There are various performance markings such as accents (^), slurs, and dynamic markings like *f* and *p*.

Lento

Handwritten musical score for measures 6 and 7. The score is written on two staves: a treble clef staff (top) and a bass clef staff (bottom). The key signature is one flat (B-flat). Measure 6 contains a melodic line in the treble staff with notes G4, A4, Bb4, C5, and a half note G4. The bass staff has a bass line with notes G2, A2, Bb2, C3. Measure 7 continues the melodic line in the treble staff with notes G4, A4, Bb4, C5, and a half note G4. The bass staff has a bass line with notes G2, A2, Bb2, C3. There are various performance markings such as accents (^), slurs, and dynamic markings like *f* and *p*.

frei

gut - dein

Handwritten musical score for measures 8 and 9. The score is written on two staves: a treble clef staff (top) and a bass clef staff (bottom). The key signature is one flat (B-flat). Measure 8 contains a melodic line in the treble staff with notes G4, A4, Bb4, C5, and a half note G4. The bass staff has a bass line with notes G2, A2, Bb2, C3. Measure 9 continues the melodic line in the treble staff with notes G4, A4, Bb4, C5, and a half note G4. The bass staff has a bass line with notes G2, A2, Bb2, C3. There are various performance markings such as accents (^), slurs, and dynamic markings like *p* and *f*. The piece concludes with the text "D.C. al" and a final measure.



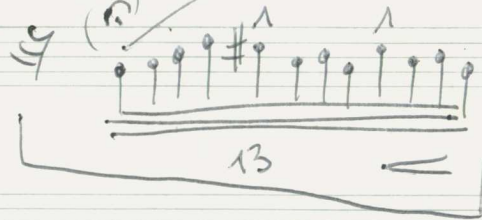
(frei)



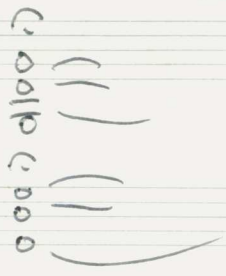
1)

pp

legg.



pp



Teil (2)

ruhig schreitend (fließend)

Handwritten musical score for the first system, measures 1-3. The score is in 4/4 time, with a treble clef and a bass clef. The melody in the treble clef starts with a quarter note G4, followed by quarter notes A4, B4, and C5, then a half note D5. The piano accompaniment in the bass clef consists of a steady eighth-note pattern: G4, A4, B4, C5, G4, A4, B4, C5. There are dynamic markings 'p' and 'f' and accents (^) over the notes. A circled '1' is in the top right corner.

Handwritten musical score for the second system, measures 4-6. The melody continues with quarter notes D5, C5, B4, and A4, then a half note G4. The piano accompaniment continues with the eighth-note pattern. There are dynamic markings 'p' and 'f' and accents (^) over the notes. A circled '2' is in the top right corner.

Handwritten musical score for the third system, measures 7-9. The melody continues with quarter notes F4, E4, D4, and C4, then a half note B3. The piano accompaniment continues with the eighth-note pattern. There are dynamic markings 'fp' and 'f' and accents (^) over the notes. A circled '3' is in the top right corner.

③

④

(poco rit)

⑤

(frei) → frei gestalten

⑥

bewegt - appassionata

Handwritten musical score for measures 7 and 8. Measure 7 features a treble clef with a half note G4 and a quarter note A4, and a piano part with a triplet of eighth notes. Measure 8 features a treble clef with a half note G4 and a quarter note A4, and a piano part with a half note. A circled '7' is at the end of the system.

Handwritten musical score for measures 9 and 10. Measure 9 features a treble clef with a half note G4 and a quarter note A4, and a piano part with a triplet of eighth notes. Measure 10 features a treble clef with a half note G4 and a quarter note A4, and a piano part with a half note. A circled '8' is at the end of the system.

*Steigern* →

Handwritten musical score for measures 11 and 12. Measure 11 features a treble clef with a half note G4 and a quarter note A4, and a piano part with a triplet of eighth notes. Measure 12 features a treble clef with a half note G4 and a quarter note A4, and a piano part with a half note. A circled '9' is at the end of the system.



breit (frei)

pesante

Littidun

Leute

religiös

Zeit

14

frei

Lento

14

da Capo al

Handwritten musical score for flute and harp. The flute part starts with a treble clef and a key signature of one sharp (F#). It features a melodic line with various dynamics including *pp*, *ff*, and *pp*, and includes a blue 'b' marking. The harp part is in the bass clef with a few notes. The score is divided into measures by vertical bar lines.

Leute

Handwritten musical score for flute and harp. The flute part is in treble clef with a  $\frac{6}{4}$  time signature and a key signature of one sharp. It contains several measures of notes with dynamics like *pp* and a circled *pp*. The harp part is in bass clef with notes and wavy lines. The word "Larga" is written above the harp part. The score ends with a double bar line.

Presto

Teil ③ Tanzstudie

The image shows three systems of handwritten musical notation. Each system consists of three staves. The top staff is a single treble clef staff. The middle staff is a grand staff with a treble clef on top and a bass clef on the bottom. The bottom staff is a single bass clef staff. The notation includes various notes, rests, slurs, and dynamic markings such as 'p' and 'f'. The piece concludes with a final double bar line and a circled '3'.

Handwritten musical score for measures 4 and 5. The system includes a flute part (top staff) and a piano accompaniment (bottom two staves). Measure 4 is circled with a '4'. The piano part features chords with accents and slurs, and a bass line with eighth notes.

Handwritten musical score for measures 6 and 7. The system includes a flute part (top staff) and a piano accompaniment (bottom two staves). Measure 6 is circled with a '5'. The piano part features chords with accents and slurs, and a bass line with eighth notes.

Handwritten musical score for measures 8 and 9. The system includes a flute part (top staff) and a piano accompaniment (bottom two staves). Measure 8 is circled with a '6'. The piano part features chords with accents and slurs, and a bass line with eighth notes.

Handwritten musical score for measures 6 and 7. The score is written for three staves: Flute (top), Clarinet (middle), and Bassoon (bottom). Measure 6 contains a whole rest for the Flute and notes for the other instruments. Measure 7 features a complex, rapid sixteenth-note passage for the Flute, marked with accents and a forte dynamic (fff). The Clarinet and Bassoon parts are mostly rests with some notes. A circled number '7' is at the end of the system.

Handwritten musical score for measures 8 and 9. Measure 8 shows a melodic line for the Flute with notes like Bb, C, D, E, F, G, A, B, marked with accents and a piano dynamic (p). The Clarinet part is marked 'Markant' and has notes like G, A, B, C, D, E, F, G, A, B. The Bassoon part has notes like G, A, B, C, D, E, F, G, A, B. Measure 9 continues the melodic lines for all instruments. A circled number '8' is at the end of the system.

Handwritten musical score for measure 9, featuring a large section of wavy lines representing a tremolo or 'rauschend' (rushing) effect. The Flute part has a circled number '9' and a dynamic marking. The Clarinet and Bassoon parts also show wavy lines. Below the staves, there is a handwritten note '(rauschend)' and a crossed-out line.

Variation ①

⑧

⑨

⑩

⑪

⑫

Handwritten musical score for measures 13. The system consists of three staves: Flute (top), Violin (middle), and Viola (bottom). Measure 13 is circled in the top staff. The Flute part features a melodic line with notes G4, A4, B4, C5, and D5, with a *fff* dynamic marking. The Violin and Viola parts provide harmonic support with chords and rhythmic patterns.

Handwritten musical score for measures 14. The system consists of three staves: Flute (top), Violin (middle), and Viola (bottom). Measure 14 is circled in the top staff. The Flute part continues with notes E5, F5, G5, and A5, marked with *fff*. The Violin and Viola parts continue with their respective parts, including a *fff* marking in the Violin staff.

Handwritten musical score for measure 15. The system consists of three staves: Flute (top), Violin (middle), and Viola (bottom). Measure 15 is circled in the top staff. The Flute part has a wavy line indicating a trill or tremolo, with a *ff* dynamic marking. The Violin and Viola parts have a *ff* dynamic marking and a *colla* marking.



15

16

Handwritten musical score for measures 15 and 16. Measure 15 starts with a piano (pp) dynamic and a slur over a series of notes. Measure 16 starts with a piano (p) dynamic and a slur over notes, with an accent (^) above the first note.

17

Handwritten musical score for measure 17. The right hand has a forte (f) dynamic and a slur over notes with flats. The left hand has a fortissimo (ff) dynamic and notes with accents (^). A blue wavy line is written in the lower left.

⊕ CODA

18

Handwritten musical score for measure 18. The right hand has a forte (f) dynamic and notes with accents (^). The left hand has a fortissimo (ff) dynamic and notes with accents (^). The word "du" is written above the right hand. A blue squiggly line is at the end.

# Variation (2)

Handwritten musical score for Variation (2), measures 18-19. The score is written for Flute (top staff) and Harp (bottom staff). The flute part features a melodic line with slurs and accents, starting with a dynamic marking of  $p =$ . The harp part consists of arpeggiated chords, with a dynamic marking of  $pp$  at the beginning. The measure numbers 18 and 19 are circled in the top right corner.

Handwritten musical score for Variation (2), measures 20-21. The score is written for Flute (top staff) and Harp (bottom staff). The flute part has a melodic line with slurs and accents, starting with a dynamic marking of  $p$ . The harp part features arpeggiated chords, with a dynamic marking of  $p$  at the beginning. The measure numbers 20 and 21 are circled in the top right corner.

Handwritten musical score for Variation (2), measures 22-23. The score is written for Flute (top staff) and Harp (bottom staff). The flute part has a melodic line with slurs and accents, starting with a dynamic marking of  $f =$ . The harp part features arpeggiated chords, with a dynamic marking of  $f =$  at the beginning. The measure numbers 22 and 23 are circled in the top right corner.

21 *frei (Presto)*

*Quel. →*

22

*Lento*

Variation 3

G.P.

6/4 *pp*

23

24

25

(frei)

26

p

ff

pp

gut

Lento

ppp

Adagio

27

p

28

29

gut

ppp

D.C. al f

♩ CODA ) furioso

Handwritten musical score for the first system. The flute part begins with a **fff** dynamic marking and a slur over notes *b*, *e*, *f*, *f*. This is followed by notes *f*, *f*, *b*, *e*, *b*, *e* with a slur and accents. The system concludes with a circled **A**. The piano accompaniment consists of chords and slurs across three staves.

Handwritten musical score for the second system. The flute part features a slur over notes *g*, *b*, *f*, *f*, *e*, *f*, *f*, *f* with accents. The system ends with a circled **B**. The piano accompaniment continues with chords and slurs.

Handwritten musical score for the third system. The flute part starts with a circled **#** and a slur over notes *f*, *f*, *f*, *f*, *f*, *f*, *f*, *f*, *f*, *f*. The word **brilliant** is written in blue. The system concludes with a circled **C**. The piano accompaniment includes a circled **#** and a section labeled **cluster** with vertical lines and slurs.

# Prestissimo →

The first system of the handwritten musical score consists of three staves. The top staff is for the flute, the middle for the violin, and the bottom for the cello. The flute part begins with a treble clef, a key signature of one sharp (F#), and a common time signature. It features a long melodic line with a slur and an accent (>) above it. The violin and cello parts are written in their respective clefs and include various rhythmic markings, including slurs, accents, and dynamic markings. A large blue bracket spans across the middle of the system, encompassing several measures. There are also some handwritten notes and symbols, such as a circled sharp sign and a wavy line, scattered throughout the system.

The second system of the handwritten musical score continues the three-staff arrangement. The flute part starts with a treble clef, a key signature of one sharp, and a common time signature. It features a melodic line with a slur and an accent (>) above it. The violin and cello parts are written in their respective clefs and include various rhythmic markings, including slurs, accents, and dynamic markings. A large blue bracket spans across the middle of the system, encompassing several measures. There are also some handwritten notes and symbols, such as a circled sharp sign and a wavy line, scattered throughout the system.

# Teil (4)

Flöte (sichlye notiert) Lento (frei)

Handwritten musical score for the first system. The top staff is in treble clef with a key signature of one flat (B-flat). It begins with a dynamic marking *p* and features a melodic line with slurs and accents. The bottom two staves are in bass clef, showing a piano accompaniment with wavy lines and some notes. A circled number 2 is at the end of the system.

Handwritten musical score for the second system. The top staff is in treble clef with a key signature of two sharps (F# and C#). It starts with a dynamic marking *p* and includes a *f* marking later. The bottom two staves are in bass clef, with the left hand starting on a C# chord. A circled number 3 is at the end of the system.

Handwritten musical score for the third system. The top staff is in treble clef with a key signature of one flat (B-flat). It begins with the word "frei" and a dynamic marking *pp*. The bottom two staves are in bass clef, with the left hand playing a simple accompaniment. A circled number 4 is at the end of the system.



④

*rubato*

*pp*

*fff*

20

*Lento*

*pp*

*pp*

*(rit)*

⑦

ganz frei) Normalflöte)

Handwritten musical score for the first system. It features a treble clef staff with a key signature of one sharp (F#) and a common time signature (C). The melody consists of several notes with accents and slurs. The piano accompaniment is shown in two staves with chords and a circled "ppp" dynamic marking.

Handwritten musical score for the second system. The treble clef staff includes the instruction "(frei rubato)" above the notes. The piano accompaniment includes a circled "pp" dynamic marking.

Handwritten musical score for the third system. It includes a treble clef staff with a circled "ppp" dynamic marking and a piano accompaniment with a circled "ppp" dynamic marking. The system concludes with the word "Fine".

wir sind einsam —

inmitten vieler —————

# 4 Miniaturen — (4 Teile) —

frei)

Handwritten musical score for the first miniature. The top staff is in treble clef and contains a melodic line with various ornaments and dynamics. The bottom staff is in bass clef and contains a harmonic accompaniment. The piece is marked "frei)" and "p".

Handwritten musical score for the second miniature. The top staff is in treble clef and contains a melodic line with various ornaments and dynamics. The bottom staff is in bass clef and contains a harmonic accompaniment. The piece is marked "f" and "ff".

appassionata

Handwritten musical score for the third miniature. The top staff is in treble clef and contains a melodic line with various ornaments and dynamics. The bottom staff is in bass clef and contains a harmonic accompaniment. The piece is marked "f" and "ff".

Ruhig schreitend —

①

②

③

(poco rit) ④

(frei) appassionato ⑤

(frei) ⑥

79

(b.c.) al f



(2)

Lento (schwer ruhig - frei)

Handwritten musical score for the first system. The top staff is for the flute, starting with a 6/4 time signature. The melody includes notes with accents and slurs. The bottom staff is for the harp, with vertical lines and notes. Dynamic markings include 'pp' and 'p'.

Handwritten musical score for the second system. The flute part continues with a circled '1' at the end. The harp part continues with vertical lines and notes.

Handwritten musical score for the third system. The flute part continues with a circled '2' at the end. The harp part continues with vertical lines and notes.



Handwritten musical score for measures 3 and 4. Measure 3 features a melodic line with blue annotations (accents, slurs, and a circled '3') and a piano accompaniment. Measure 4 continues the melodic line with a circled '3' at the end.

Handwritten musical score for measures 5 and 6. Measure 5 includes a 'Zart' marking and a circled '4'. Measure 6 includes a '(rit)' marking and a circled '4'.

Handwritten musical score for measures 7 and 8. Measure 7 includes a 'fp' marking. Measure 8 includes a 'lunga' marking.

No. ③

quadrato (furioso) sehr rasch und rhythmisch

①

②

③

③

④

⑤

⑥

Handwritten musical score for the first system, measures 6-7. The system consists of three staves: Flute (top), Clarinet (middle), and Bassoon (bottom). Measure 6 features a sixteenth-note triplet in the Flute part, marked with a circled '6' above it. The Clarinet and Bassoon parts have corresponding chords and notes. Measure 7 continues the triplet in the Flute part, also marked with a circled '6' above it. A circled '7' is at the end of the system.

Handwritten musical score for the second system, measures 8-9. The system consists of three staves: Flute (top), Clarinet (middle), and Bassoon (bottom). Measure 8 features a sixteenth-note triplet in the Flute part, marked with a circled '6' above it. A handwritten note in blue ink says "3 (auf 1 Schlag)" next to the triplet. The Clarinet and Bassoon parts have corresponding chords and notes. Measure 9 continues the triplet in the Flute part, also marked with a circled '6' above it. A circled '9' is at the end of the system.

Handwritten musical score for the third system, measures 10-11. The system consists of three staves: Flute (top), Clarinet (middle), and Bassoon (bottom). Measure 10 features a sixteenth-note triplet in the Flute part, marked with a circled '6' above it. The Clarinet and Bassoon parts have corresponding chords and notes. Measure 11 continues the triplet in the Flute part, also marked with a circled '6' above it. A circled '9' is at the end of the system.

9

10

(ad. lib.) stacc.

11

legato

12

Handwritten musical score for measures 13-15. The score is written on three staves. The top staff is in treble clef and contains a sixteenth-note sextuplet starting in measure 14, marked with a circled '1' and 'pp'. The middle staff is in treble clef and contains a wavy line with an upward-pointing arrow above it, starting in measure 13. The bottom staff is in bass clef and contains a wavy line with a downward-pointing arrow below it, starting in measure 13. A circled '13' is in the top right corner.

Handwritten musical score for measures 16-18. The score is written on three staves. The top staff is in treble clef and contains a sixteenth-note sextuplet starting in measure 17, marked with a circled '1' and 'pp'. The middle staff is in treble clef and contains a wavy line with an upward-pointing arrow above it, starting in measure 16. The bottom staff is in bass clef and contains a wavy line with a downward-pointing arrow below it, starting in measure 16. A circled '14' is in the top right corner.

Handwritten musical score for measures 19-21. The score is written on three staves. The top staff is in treble clef and contains a sixteenth-note sextuplet starting in measure 20, marked with a circled '1' and 'pp'. The middle staff is in treble clef and contains a wavy line with an upward-pointing arrow above it, starting in measure 19. The bottom staff is in bass clef and contains a wavy line with a downward-pointing arrow below it, starting in measure 19. A circled '15' is in the top right corner.

15

16

17

18

(freies Harfensolo!)

*fff*

Cluster

Presto

frei — solo

*pp*

*pp*

rauschend →

accel →

Allergo — accel. — Presto — accel.

*pp*



Handwritten musical notation for the first system. It consists of three staves: a treble clef staff with a key signature of one sharp (F#) and a 4/4 time signature, a flute staff with a *gliss.* marking and a wavy line representing a glissando, and a bass clef staff with a key signature of one sharp (F#) and a 4/4 time signature. The bass staff contains notes with stems and accents (^) above them. A blue handwritten annotation "(nausend-)" with an arrow points to the flute staff.

Handwritten musical notation for the second system. It consists of three staves: a treble clef staff with a key signature of one sharp (F#) and a 4/4 time signature, a flute staff with a wavy line representing a glissando, and a bass clef staff with a key signature of one sharp (F#) and a 4/4 time signature. The bass staff contains notes with stems and accents (^) above them.

Handwritten musical notation for the third system. It consists of three staves: a treble clef staff with a key signature of one sharp (F#) and a 4/4 time signature, a flute staff with a wavy line representing a glissando, and a bass clef staff with a key signature of one sharp (F#) and a 4/4 time signature. The bass staff contains notes with stems and accents (^) above them. A circled number "20" is written at the end of the system.

(rit + dim)

(religios)

Handwritten musical score for a string quartet. The score is written on two systems of staves. The first system includes a treble clef, a 4/4 time signature, and a circled sharp sign (#). The notation consists of rhythmic patterns and accidentals (sharps and naturals) written below the staves. The second system continues with similar notation, including a circled 'p' (piano) dynamic marking and a circled '21' at the end of the line. To the right of the second system, there are circled notes 'D.C.' and 'al' (allegro), and a circled treble clef.

CODA

Handwritten musical score for a string quartet, labeled 'CODA'. It features two systems of staves. The first system includes a treble clef, a 6/8 time signature, and a circled 'ff' (fortissimo) dynamic marking. The notation shows rhythmic patterns and accidentals. The second system continues with similar notation, including a circled 'A' at the end of the line.

Handwritten musical score for a string quartet, continuing from the previous system. It features two systems of staves. The notation shows rhythmic patterns and accidentals. The second system ends with a circled 'B' at the end of the line.

mov.  $\left(\frac{3}{4}\right)$  *af 1* (Prestissimo)

Handwritten musical score for the first system, measures 1-4. The top staff is for the flute, and the bottom two staves are for the harp. The flute part features a melodic line with slurs and accents, starting with a circled sharp sign. The harp part consists of sustained chords. A circled 'C' is at the end of the system.

Handwritten musical score for the second system, measures 5-8. The top staff is for the flute, and the bottom two staves are for the harp. The flute part continues with a melodic line, including a circled flat sign. The harp part has sustained chords. A circled 'D' is at the end of the system.

Handwritten musical score for the third system, measures 9-12. The top staff is for the flute, and the bottom two staves are for the harp. The flute part is mostly sustained notes with a circled sharp sign. The harp part has sustained chords. A circled 'E' is at the end of the system.

Handwritten musical notation on a page of staff paper. The notation is written on the first three staves. The first staff has a treble clef and a single vertical line. The second staff has a treble clef, a key signature of one sharp (F#), and a common time signature (C). It contains rhythmic markings and notes. The third staff has a bass clef, a key signature of one sharp (F#), and a common time signature (C). It also contains rhythmic markings and notes. There are four vertical bar lines separating the measures. To the right of the first three staves, there are handwritten notes 'c1 c1 c1' and a wavy line. Below the first three staves, there is a circled rhythmic marking with a vertical line and a downward-pointing arrow.

No. 4

(FRAGILE) religioso

Handwritten musical notation for the first system, measures 1-4. The score is in 4/4 time. The first staff (treble clef) contains rests for the first three measures and a circled '1' at the end. The second staff (bass clef) contains a circled 'p' dynamic marking, a fermata over a whole note chord in the first measure, and a melodic line of quarter notes in the second measure. The third measure features a fermata over a whole note chord, and the fourth measure contains a complex chordal structure with a circled '1' at the end.

Handwritten musical notation for the second system, measures 5-8. The first staff (treble clef) contains a circled 'p' dynamic marking and a melodic line with slurs and accents. The second staff (bass clef) contains a circled 'p' dynamic marking and a melodic line with slurs and accents. The third measure features a fermata over a whole note chord, and the fourth measure contains a complex chordal structure with a circled '2' at the end.

Handwritten musical score for the first system. It consists of a flute part and a harp part. The flute part features a melodic line with various ornaments and slurs. The harp part provides accompaniment with chords and moving lines. A circled number '3' is in the top right corner. The instruction '(poco rit)' is written at the bottom right of the system.

Handwritten musical score for the second system. The flute part is marked '(frei)' and includes the instruction 'subito) frei (leidenschaftlich)'. The harp part features sustained chords with a circled 'fff' dynamic marking. The system concludes with a double bar line.

Handwritten musical score for the third system. The flute part is marked '(rit + dim)' and includes a 'pp' dynamic marking. The harp part features sustained chords with a circled 'fff' dynamic marking. The system concludes with a double bar line.



Handwritten musical score for the first system. It features a treble clef staff with notes and rests, and a bass clef staff with rhythmic notation. A box labeled "legg. 47" is drawn over the right side of the treble staff, containing a diagram of a flute with fingerings indicated by arrows. A circled letter "D" is at the end of the system.

Handwritten musical score for the second system, starting with the tempo marking "Adagio" in a blue box. It includes a treble clef staff with rests and a bass clef staff with notes and rests. A circled "GIP" is in the treble staff, and a circled "pp" is in the bass staff. A circled letter "E" is at the end of the system.

Handwritten musical score for the third system, ending with the tempo marking "Fine" in a circled box. It features a treble clef staff with notes and rests, and a bass clef staff with notes and rests. The word "Cura Vibrato" is written above the treble staff. A circled "pp" is in the bass staff. A circled letter "F" is at the end of the system.