

L.v. BEETHOVEN



W.A. MOZART



NOTENHEFT

F. SCHUBERT



J. HAYDN



J. STRAUSS



Klarinette (heftig bewegt)

1

MUSIKSAMMLUNG
ÖSTERR.
NATIONALBIBLIOTHEK

1

Handwritten musical score for the first system, measures 1-3. The staves are:

- Klarinette in B**: Treble clef, key signature of one sharp (F#).
- 1. u. 2. Violine**: Treble clef, key signature of one sharp (F#).
- Bratsch**: Treble clef, key signature of one sharp (F#).
- Celli + Bass**: Bass clef, key signature of one sharp (F#).
- Schlagz. + Vibr.**: Bass clef, key signature of one sharp (F#).

Measure 1: Clarinet and Violins play a melodic line starting on G4. Basses play a rhythmic pattern of eighth notes. Percussion plays a pattern of eighth notes.

Measure 2: Similar melodic and rhythmic development.

Measure 3: Similar melodic and rhythmic development.

Annotations include accents (^), slurs, and dynamic markings like *unis.* and *otB*.

2

Handwritten musical score for the second system, measures 4-6. The staves are:

- Klarinette**: Treble clef, key signature of one sharp (F#).
- 1. u. 2. Violine**: Treble clef, key signature of one sharp (F#).
- Bratsch**: Treble clef, key signature of one sharp (F#).
- Celli + Bass**: Bass clef, key signature of one sharp (F#).
- Schlagz. + Vibr.**: Bass clef, key signature of one sharp (F#).

Measure 4: Clarinet and Violins play a melodic line. Basses play a rhythmic pattern. Percussion plays a pattern of eighth notes.

Measure 5: Similar melodic and rhythmic development.

Measure 6: Similar melodic and rhythmic development.

Annotations include accents (^), slurs, and dynamic markings like *unis.* and *p*.

F 153 Scherbaum 1200

Konzert für Klarinette (in 3 Teilen)

1979 / 22 Violine / 8 Viola / 6 Celli / 4 Bassen / Schlagz. Vibr. + Vl.

sehr (Solo)!

(3)

(4)

Handwritten musical score for measures 5 and 6. The score is written on five staves. The top staff is in treble clef, and the bottom four staves are in bass clef. The music features various dynamics such as *f* and *p*, and includes a circled measure number '5' at the end of the first system. The notation includes notes, rests, and slurs.

Handwritten musical score for measures 7 and 8. The score is written on five staves. The top staff is in treble clef, and the bottom four staves are in bass clef. The music features various dynamics such as *ff*, *f*, and *p*, and includes a circled measure number '6' at the end of the first system. The notation includes notes, rests, and slurs. A circled word 'arco' is present in the lower right of the system.

6

7

Handwritten musical score for measures 6 and 7. The score consists of five staves. The top staff is a treble clef with a key signature of one sharp (F#) and a 4/4 time signature. The second and third staves are a grand staff (treble and bass clefs) with a key signature of one sharp. The fourth staff is a treble clef with a key signature of one sharp. The fifth staff is a treble clef with a key signature of one sharp. The music includes various notes, rests, and dynamic markings such as 'ff' and 'p'.

Handwritten musical score for measures 8 and 9. The score consists of five staves. The top staff is a treble clef with a key signature of one sharp (F#) and a 4/4 time signature. The second and third staves are a grand staff (treble and bass clefs) with a key signature of one sharp. The fourth staff is a treble clef with a key signature of one sharp. The fifth staff is a treble clef with a key signature of one sharp. The music includes various notes, rests, and dynamic markings such as 'pp', 'p', and 'f'. A 'Pedal' marking is present in the fifth staff.

Handwritten musical score for the first system, measures 18-20. The score consists of five staves. The first staff is in Treble clef, and the second, third, and fourth staves are in Bass clef. The fifth staff is also in Treble clef. The music includes various dynamics such as *f*, *pp*, and *pp=*. There are also markings for *mf* and *pp= Pedal*. The notes are mostly eighth and sixteenth notes with accidentals. Measure 20 is circled at the end of the system.

Handwritten musical score for the second system, measures 21-23. The score consists of five staves. The first staff is in Treble clef, and the second, third, and fourth staves are in Bass clef. The fifth staff is also in Treble clef. The music includes various dynamics such as *pp*, *pp=*, and *ff*. There is a marking for *SCHLAGZ.* (Schlagzeug). The notes are mostly eighth and sixteenth notes with accidentals. Measure 23 is circled at the end of the system.

11

Solo Klarine.

ff
Pedal (Vibraphon)

12

ff
Pedal
oww

Handwritten musical score for the first system. The top staff is in treble clef and contains a melodic line with slurs and accents. The bottom staff is in bass clef and contains a bass line. The word "Pedal" is written in the bass staff. The music includes slurs, accents, and various note values.

Handwritten musical score for the second system. The top staff continues the melodic line. The bottom staff continues the bass line. A circled number "13" is at the end of the system. The word "Pedal" is written in the bass staff.

Handwritten musical score for the third system. The top staff starts with the instruction "(frei)". The bottom staff contains a complex bass line with many notes and slurs. The word "Pedal" is written in the bass staff.

frei)

Handwritten musical notation for the first system. It consists of two staves. The upper staff has a treble clef and a key signature of one flat. The music begins with a dynamic marking of *ff* and a series of notes with various accidentals (sharps, flats, naturals) and slurs. A long, sweeping slur covers the entire phrase. The lower staff is mostly empty, with some faint markings at the end.

Handwritten musical notation for the second system. It consists of two staves. The upper staff has a treble clef and a key signature of one flat. The music features a series of notes with various accidentals and slurs. Below the notes, the lyrics "ist + dir" are written. The lower staff is mostly empty, with some faint markings at the end.

Lento

Handwritten musical notation for the third system. It consists of two staves. The upper staff has a treble clef and a key signature of one flat. The music is marked *Lento* and features a series of notes with various accidentals and slurs. The lower staff is mostly empty, with some faint markings at the end.

(d) Lento (Solo Klarinette) sehr gering

Handwritten musical notation for the fourth system. It consists of two staves. The upper staff has a treble clef and a key signature of one flat. The music is marked *(d) Lento (Solo Klarinette) sehr gering* and features a series of notes with various accidentals and slurs. The lower staff is mostly empty, with some faint markings at the end.

Solo Klarine (frei)

(legg.) - pp

Vibr.

Handwritten musical notation for the first system, including notes and dynamic markings.

pesante -

gitt + deri

Lunga

Handwritten musical notation for the second system, including notes, slurs, and dynamic markings.

Tempo (1)

pp

Pedal

Handwritten musical notation for the third system, including notes, slurs, and dynamic markings.

D.C.
al 2.

2. (Presto — —

(A)

(B)

$\hat{b} \circ$

(ohne gest)

Lunge

Fing

②

(Viel Hall —
(eigenes Mikrophon))

Klarin. Solo (Rundung — ganz frei gestalten) —

pp = \hat{b} \hat{d} \hat{f} \hat{a} | \hat{b} \hat{d} \hat{f} \hat{a} | \hat{b} \hat{d} \hat{f} \hat{a} | \hat{b} \hat{d} \hat{f} \hat{a} |

①

\hat{g} \hat{a} \hat{b} \hat{c} | \hat{d} \hat{e} \hat{f} \hat{g} | \hat{a} \hat{b} \hat{c} \hat{d} | \hat{e} \hat{f} \hat{g} \hat{a} |

②

\hat{p} \hat{q} \hat{r} \hat{s} | \hat{t} \hat{u} \hat{v} \hat{w} | \hat{x} \hat{y} \hat{z} \hat{aa} | \hat{ab} \hat{ac} \hat{ad} \hat{ae} |

③

\hat{f} \hat{g} \hat{a} \hat{b} | \hat{c} \hat{d} \hat{e} \hat{f} | \hat{g} \hat{a} \hat{b} \hat{c} | \hat{d} \hat{e} \hat{f} \hat{g} |

④

\hat{p} \hat{q} \hat{r} \hat{s} | \hat{t} \hat{u} \hat{v} \hat{w} | \hat{x} \hat{y} \hat{z} \hat{aa} | \hat{ab} \hat{ac} \hat{ad} \hat{ae} |

(frei — gut + dein)

Lunga
pp > pppp

FINE

⑤

sehr ruhig (wie Blues) —

Handwritten musical score for measures 6-8. The score is written on five staves: Flute (top), Clarinet (second), Bassoon (third), Cello/Double Bass (fourth), and Drumset (bottom). Measure 6 starts with a dynamic marking of *pp* and a tempo marking of *♩*. The Flute part features a melodic line with slurs and accents, ending with a circled measure number 6. The Clarinet part has a sustained chord with a *b* flat. The Bassoon part has a sustained chord. The Cello/Double Bass part has a rhythmic pattern with a *pp* marking and the text "CP133 =". The Drumset part has a rhythmic pattern with a *p* marking.

Handwritten musical score for measures 9-11. The score is written on five staves: Flute (top), Clarinet (second), Bassoon (third), Cello/Double Bass (fourth), and Drumset (bottom). Measure 9 starts with a dynamic marking of *pp*. The Flute part features a melodic line with slurs and accents, ending with a circled measure number 9. The Clarinet part has a sustained chord with a *b* flat. The Bassoon part has a sustained chord. The Cello/Double Bass part has a rhythmic pattern with a *pp* marking. The Drumset part has a rhythmic pattern with a *pp* marking.

7

8

(poco rit)

9

ritco

Solo breit

(poco rit)

10

Solo (solo frei - rubato)

11

12

15

VIBR. Solo (ruhig / frei) ad libitum

p
Pedal

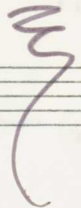
12

rubato
13

Pedal
14
p > pp
pppp

D.C.

al Fine



Bresto (heftig!)

③

Rondo (Bogenform!) ①

①

②

② *lobo!* ③

C+B

① pizz

④

⑤

⑥

Solo

7

Handwritten musical score for measures 7-9. The system includes three staves: Clarinet (C4/B), Violin Solo, and Bass. The Clarinet staff has a treble clef and a sharp sign (F#) above the first measure. The Violin Solo staff has a treble clef and a circled 'f' dynamic marking. The Bass staff has a bass clef and a circled 'p' dynamic marking. The music features a long melodic line in the Clarinet, a rhythmic accompaniment in the Violin, and a bass line in the Bass. Measure 9 is circled at the end of the system.

Handwritten musical score for measures 10-12. The system includes three staves: Clarinet (C4/B), Violin Solo, and Bass. The Clarinet staff has a treble clef and a circled 'f' dynamic marking. The Violin Solo staff has a treble clef and a circled 'f' dynamic marking. The Bass staff has a bass clef and a circled 'p' dynamic marking. The music continues with melodic and rhythmic development. Measure 12 is circled at the end of the system.

Handwritten musical score for measures 13-15. The system includes three staves: Clarinet (C4/B), Violin Solo, and Bass. The Clarinet staff has a treble clef and a circled 'f' dynamic marking. The Violin Solo staff has a treble clef and a circled 'p' dynamic marking. The Bass staff has a bass clef and a circled 'f' dynamic marking. The music features a complex rhythmic pattern in the Violin and a melodic line in the Clarinet. Measure 15 is circled at the end of the system.

9

Clarinet: $\text{F}\sharp$ $\text{G}\flat$ $\text{A}\flat$ $\text{B}\flat$ $\text{C}\flat$

Violin I: $\text{F}\sharp$ $\text{G}\flat$ $\text{A}\flat$ $\text{B}\flat$ $\text{C}\flat$

Violin II: $\text{F}\sharp$ $\text{G}\flat$ $\text{A}\flat$ $\text{B}\flat$ $\text{C}\flat$

Viola: $\text{F}\sharp$ $\text{G}\flat$ $\text{A}\flat$ $\text{B}\flat$ $\text{C}\flat$

Cello/Double Bass: $\text{F}\sharp$ $\text{G}\flat$ $\text{A}\flat$ $\text{B}\flat$ $\text{C}\flat$

10

11

Clarinet: $\text{F}\sharp$ $\text{G}\flat$ $\text{A}\flat$ $\text{B}\flat$ $\text{C}\flat$

Violin I: $\text{F}\sharp$ $\text{G}\flat$ $\text{A}\flat$ $\text{B}\flat$ $\text{C}\flat$

Violin II: $\text{F}\sharp$ $\text{G}\flat$ $\text{A}\flat$ $\text{B}\flat$ $\text{C}\flat$

Viola: $\text{F}\sharp$ $\text{G}\flat$ $\text{A}\flat$ $\text{B}\flat$ $\text{C}\flat$

Cello/Double Bass: $\text{F}\sharp$ $\text{G}\flat$ $\text{A}\flat$ $\text{B}\flat$ $\text{C}\flat$

11

12

13

21

13

14

Handwritten musical score for measures 13 and 14. The score includes staves for Clarinet, Violins, Viola, Cello, and Double Bass. Measure 13 features a dynamic marking 'p' and the instruction '(nur die Hälfte Violinen)'. Measure 14 features a dynamic marking 'p133'.

15

Handwritten musical score for measure 15. The score includes staves for Clarinet, Violins, Viola, Cello, and Double Bass. Measure 15 features a dynamic marking 'f' and the instruction '(alle Violinen)'. The score concludes with a double bar line.

17 1.

frei (rubato)

Handwritten musical score for measures 17-18. The score is written on four staves: Clarinet (C1), Flute (F), Bassoon (B), and Cello/Double Bass (C). The Clarinet part features a melodic line with a slur and a fermata over the final notes. The Flute part has a series of notes with slurs. The Bassoon part has a few notes. The Cello/Double Bass part has a few notes. The tempo marking 'frei (rubato)' is written above the Clarinet staff.

18

Zeit + drin

Handwritten musical score for measures 18-19. The score is written on four staves: Clarinet (C1), Flute (F), Bassoon (B), and Cello/Double Bass (C). The Clarinet part features a melodic line with a slur and a fermata over the final notes. The Flute part has a series of notes with slurs. The Bassoon part has a few notes. The Cello/Double Bass part has a few notes. The tempo marking 'Zeit + drin' is written above the Clarinet staff. The measure number '18' is circled in the top right corner.

lento (sehr ruhig) (♩)

Handwritten musical score for the first system. The top staff is for the clarinet, and the bottom staff is for the piano. The clarinet part begins with a whole rest, followed by a melodic line starting on a sharp. The piano part features a tremolo (VIBR.) in the right hand and a sustained bass line (Pedal) in the left hand. Performance instructions include *pp* (pianissimo) and *Pedal (Vibrato (schwebend))*.

Handwritten musical score for the second system. The clarinet part continues with a melodic line that includes a circled measure number **18**. The piano part continues with a sustained bass line. Performance instructions include *pp* and *Pedal aus* (pedal out).

Handwritten musical score for the third system. The clarinet part continues with a melodic line that includes a circled measure number **19**. The piano part continues with a sustained bass line. Performance instructions include *fp* (fortissimo) and *Pedal*.

poco grt (♩)

20

Ped. aus

(♩) ganz frei.....

21

pp

pp

pp

VIBR.

schwebend.

pp Pedal

Handwritten musical score for measures 22-23. The score is written on five staves. The top staff contains a melodic line with various notes and accidentals, including a circled '22' at the end. The second staff has a few notes. The third and fourth staves have long horizontal lines with some notes at the beginning. The fifth staff contains a complex, dense texture of notes and rests, with a circled '23' at the end. Below the fifth staff, there is a bracket labeled 'Pedal' and 'pp'.

Handwritten musical score for measures 24-25. The score is written on five staves. The top staff contains a melodic line with various notes and accidentals, including a circled '23' at the end. The second staff has a few notes. The third and fourth staves have long horizontal lines with some notes at the beginning. The fifth staff contains a complex, dense texture of notes and rests, with a circled '24' at the end. Below the fifth staff, there is a bracket labeled 'Pedal' and 'ppp'. To the right of the staves, the word 'PAUSE' is written vertically, with 'Kl.' above it.

(freies Solo (Klarinette) — freigestalten)

ruhig beginnen — steigern →

Handwritten musical notation for the first staff, featuring a treble clef, 2/4 time signature, and a circled 'p' dynamic marking. The melody consists of quarter and eighth notes with accents and a fermata over the final note.

accel.

Handwritten musical notation for the second staff, starting with a treble clef and a circled 'f' dynamic marking. The melody is more active, with eighth notes and a fermata over the final note.

beherzter (accel.)

→ accel. →

Handwritten musical notation for the third staff, featuring a treble clef and a circled 'f' dynamic marking. The melody is highly rhythmic and dense, with many sixteenth notes and a fermata over the final note.

Presto

heftig!

Handwritten musical notation for the fourth staff, featuring a treble clef and a circled 'ff' dynamic marking. The melody is very dense and rhythmic, with many sixteenth notes and a fermata over the final note.

Handwritten musical notation for the fifth staff, featuring a treble clef and a circled 'ff' dynamic marking. The melody is very dense and rhythmic, with many sixteenth notes and a fermata over the final note.

Handwritten musical notation for the sixth staff, featuring a treble clef and a circled 'pp' dynamic marking. The melody is very dense and rhythmic, with many sixteenth notes and a fermata over the final note.

(gut - dünn) →

D.C. Satz 3

al 2.

(B)

Handwritten musical score for the first system, measures 1-3. The score is written on five staves. The top staff is a treble clef with a whole rest. The second staff is a treble clef with eighth notes and sixteenth notes, including accidentals. The third staff is a bass clef with eighth notes and sixteenth notes, including accents. The fourth staff is a bass clef with eighth notes and sixteenth notes, including accents. The fifth staff is a bass clef with a whole note chord and a slur. The system ends with a double bar line.

(C)

Handwritten musical score for the second system, measures 4-7. The score is written on five staves. The top staff is a treble clef with a whole rest. The second staff is a treble clef with eighth notes and sixteenth notes, including an '8' marking and slurs. The third staff is a bass clef with a whole note chord and a slur, including a circled 'Att' marking. The fourth staff is a bass clef with eighth notes and sixteenth notes, including accents. The fifth staff is a bass clef with eighth notes and sixteenth notes, including accents. The system ends with a double bar line.

(D)

Handwritten musical score for the first system. The top staff is in treble clef and contains three measures of music with various notes and accidentals. Below it are four empty bass clef staves. A circled 'D' is at the top right, and a circled 'pp' is at the bottom left.

pesante

(Breit)

(Forte)

Handwritten musical score for the second system. The top staff is in treble clef and contains three measures of music with various notes and accidentals. Below it are four bass clef staves. The bass staves contain various markings and notes. A circled 'Breit' is at the top left, and a circled 'Forte' is at the top right.

Dieses Konzert wurde in
seiner Tonalität geschrieben.

läßt dem Solisten alle
Freiheiten.

Hauptmotiv. =

Alte Melodie:

Text: = Meine Rechnung ist vollendet —

Weil ein geistlicher Bursche kam —

o. s. w.

1979 / Urbant — Josephstal —
geschrieben in meinem Haus —

habe keine guten Vorkenntnisse —

Adolf Scherbaum