

L.V. BEETHOVEN



W.A. MOZART



# NOTENHEFT

F. SCHUBERT



J. HAYDN



J. STRAUSS



MADE IN AUSTRIA

Fantasie (in E)

1979

für Orgel

Adolf Scherbaum

*trist*

Handwritten musical notation for the first system, featuring a treble and bass clef, a 4/4 time signature, and a key signature of one sharp (F#). The melody consists of quarter notes with a slur over the first two measures. The bass line consists of quarter notes with a slur over the first two measures.

Handwritten musical notation for the second system, featuring a treble and bass clef. The melody consists of quarter notes with a slur over the first two measures. The bass line consists of quarter notes with a slur over the first two measures.

*trai*

Handwritten musical notation for the third system, featuring a treble and bass clef. The melody consists of a long note with a slur over it, and a key signature change to one sharp (F#). The bass line consists of a long note with a slur over it.

*perante* *sonnants* →

Handwritten musical notation for the fourth system, featuring a treble and bass clef, a 3/4 time signature, and a key signature of one sharp (F#). The melody consists of quarter notes with a slur over the first two measures. The bass line consists of quarter notes with a slur over the first two measures.

*frei*

(mit)

*rubato (frei)*

*Presto*

Tempo (heftig — erregt — hastig)

Handwritten musical notation for the first system, consisting of two staves. The upper staff contains several notes with accidentals (flats and naturals) and rests, some grouped by a slur. The lower staff contains a series of notes, some with accidentals, and rests.

Meno

Handwritten musical notation for the second system, including the instruction "Meno". It features two staves with notes, rests, and accidentals.

Tempo

(p)

Handwritten musical notation for the third system, including the instruction "Tempo" and a dynamic marking "(p)". It features two staves with notes, rests, and accidentals.

Handwritten musical notation for the fourth system, featuring two staves with notes, rests, and accidentals.

Meno

Handwritten musical notation for the fifth system, including the instruction "Meno". It features two staves with notes, rests, and accidentals.

rubato (oder frei)

Handwritten musical notation for the first system. The treble clef staff begins with a key signature of one flat (Bb) and a common time signature (C). The first measure contains a whole note chord of Bb3, D4, and F4. The second measure contains a half note chord of Bb3, D4, and F4, followed by a half note chord of Bb3, D4, and F4. The bass clef staff begins with a whole note chord of Bb2, D3, and F3. The second measure contains a half note chord of Bb2, D3, and F3, followed by a half note chord of Bb2, D3, and F3. The system concludes with two empty staves.

Handwritten musical notation for the second system. The treble clef staff begins with a key signature of two sharps (F# and C#) and a common time signature (C). The first measure contains a whole note chord of F#3, A#3, and C#4. The second measure contains a half note chord of F#3, A#3, and C#4, followed by a half note chord of F#3, A#3, and C#4. The bass clef staff begins with a whole note chord of F#2, A#2, and C#3. The second measure contains a half note chord of F#2, A#2, and C#3, followed by a half note chord of F#2, A#2, and C#3. The system concludes with two empty staves.

Handwritten musical notation for the third system. The treble clef staff begins with a key signature of one flat (Bb) and a common time signature (C). The first measure contains a whole note chord of Bb3, D4, and F4. The second measure contains a half note chord of Bb3, D4, and F4, followed by a half note chord of Bb3, D4, and F4. The bass clef staff begins with a whole note chord of Bb2, D3, and F3. The second measure contains a half note chord of Bb2, D3, and F3, followed by a half note chord of Bb2, D3, and F3. The system concludes with two empty staves.

graves mit

Handwritten musical notation for the fourth system. The treble clef staff begins with a key signature of two flats (Bb and Eb) and a common time signature (C). The first measure contains a whole note chord of Bb3, D4, and F4. The second measure contains a half note chord of Bb3, D4, and F4, followed by a half note chord of Bb3, D4, and F4. The bass clef staff begins with a whole note chord of Bb2, D3, and F3. The second measure contains a half note chord of Bb2, D3, and F3, followed by a half note chord of Bb2, D3, and F3. The system concludes with two empty staves.

**ADASSIO**

Handwritten musical score for the first system. It consists of two staves. The upper staff is in treble clef and contains a circled 'P' and a circled '6'. The lower staff is in bass clef and contains a circled '6'. The music includes notes, rests, and dynamic markings such as 'pp' and 'p'. There are also some handwritten annotations like '47 #9' and '2'.

(1) (2) *schleunig (fließend)*

Handwritten musical score for the second system. It starts with a circled 'P'. The music is written on a single staff with a treble clef, featuring a melodic line with various accidentals and a dynamic marking of 'p'.

Handwritten musical score for the third system. It continues the melodic and harmonic material from the previous systems, featuring various notes, accidentals, and dynamic markings.



Handwritten musical notation system 1. The system consists of two staves. The upper staff is in treble clef and contains four measures of music. The first measure has a whole note chord with notes G4 and A4. The second measure has a whole note chord with notes Bb4, C5, and D5. The third measure has a whole note chord with notes C5, B4, and A4. The fourth measure has a whole note chord with notes G4 and F4. A slur covers the last two measures. The lower staff is in bass clef and contains four measures of music. The first measure has a whole note chord with notes G2 and A2. The second measure has a whole note chord with notes Bb2, C3, and D3. The third measure has a whole note chord with notes C3, B2, and A2. The fourth measure has a whole note chord with notes G2 and F2. A slur covers the last two measures.

Handwritten musical notation system 2. The system consists of two staves. The upper staff is in treble clef and contains four measures of music. The first measure has a whole note chord with notes Bb4 and A4. The second measure has a whole note chord with notes G4 and F4. The third measure has a whole note chord with notes E4 and D4. The fourth measure has a whole note chord with notes C4 and B3. A slur covers the last two measures. The lower staff is in bass clef and contains four measures of music. The first measure has a whole note chord with notes G2 and F2. The second measure has a whole note chord with notes E2 and D2. The third measure has a whole note chord with notes C2 and B1. The fourth measure has a whole note chord with notes A1 and G1. A slur covers the last two measures.

Handwritten musical notation system 3. The system consists of two staves. The upper staff is in treble clef and contains four measures of music. The first measure has a whole note chord with notes G4 and F4. The second measure has a whole note chord with notes E4 and D4. The third measure has a whole note chord with notes C4 and B3. The fourth measure has a whole note chord with notes A3 and G3. A slur covers the last two measures. The lower staff is in bass clef and contains four measures of music. The first measure has a whole note chord with notes G2 and F2. The second measure has a whole note chord with notes E2 and D2. The third measure has a whole note chord with notes C2 and B1. The fourth measure has a whole note chord with notes A1 and G1. A slur covers the last two measures.

Handwritten musical notation system 4. The system consists of two staves. The upper staff is in treble clef and contains four measures of music. The first measure has a whole note chord with notes Bb4 and A4. The second measure has a whole note chord with notes G4 and F4. The third measure has a whole note chord with notes E4 and D4. The fourth measure has a whole note chord with notes C4 and B3. A slur covers the last two measures. The lower staff is in bass clef and contains four measures of music. The first measure has a whole note chord with notes G2 and F2. The second measure has a whole note chord with notes E2 and D2. The third measure has a whole note chord with notes C2 and B1. The fourth measure has a whole note chord with notes A1 and G1. A slur covers the last two measures.

Handwritten musical notation for the first system. The treble clef staff contains notes with accidentals:  $b$ ,  $g$ ,  $b$ ,  $g$ ,  $b$ ,  $g$ ,  $b$ ,  $g$ . The bass clef staff contains notes with accidentals:  $\sharp$ ,  $\sharp$ ,  $\sharp$ ,  $\sharp$ ,  $\sharp$ ,  $\sharp$ ,  $\sharp$ ,  $\sharp$ . A circled  $6:2$  is written above the bass clef staff. A slur covers the first two measures of the treble staff.

Handwritten musical notation for the second system. The treble clef staff contains notes with accidentals:  $b$ ,  $g$ ,  $b$ ,  $g$ ,  $b$ ,  $g$ ,  $b$ ,  $g$ . The bass clef staff contains notes with accidentals:  $\sharp$ ,  $\sharp$ ,  $\sharp$ ,  $\sharp$ ,  $\sharp$ ,  $\sharp$ ,  $\sharp$ ,  $\sharp$ . A slur covers the first two measures of the treble staff. A circled  $3$  is written below the bass clef staff.

Handwritten musical notation for the third system. The treble clef staff contains notes with accidentals:  $b$ ,  $g$ ,  $b$ ,  $g$ ,  $b$ ,  $g$ ,  $b$ ,  $g$ . The bass clef staff contains notes with accidentals:  $\sharp$ ,  $\sharp$ ,  $\sharp$ ,  $\sharp$ ,  $\sharp$ ,  $\sharp$ ,  $\sharp$ ,  $\sharp$ . A slur covers the first two measures of the treble staff.

Handwritten musical notation for the fourth system. The treble clef staff contains notes with accidentals:  $\sharp$ ,  $\sharp$ ,  $\sharp$ ,  $\sharp$ ,  $\sharp$ ,  $\sharp$ ,  $\sharp$ ,  $\sharp$ . The bass clef staff contains notes with accidentals:  $b$ ,  $g$ ,  $b$ ,  $g$ ,  $b$ ,  $g$ ,  $b$ ,  $g$ . A circled  $3$  is written below the bass clef staff. A slur covers the first two measures of the treble staff.

Handwritten musical notation for the first system, featuring a treble clef and a bass clef. The treble clef part has notes with accidentals (b, #) and a circled '3'. The bass clef part has notes with accidentals and a circled '4'. There are also some handwritten annotations like 'b9' and '(b)'.

rit.

Handwritten musical notation for the second system, featuring a treble clef and a bass clef. The treble clef part has notes with accidentals and a circled '4'. The bass clef part has notes with accidentals and a circled '4'. There are also some handwritten annotations like '#9' and '#b'.

grads rit...

Handwritten musical notation for the third system, featuring a treble clef and a bass clef. The treble clef part has notes with accidentals and a circled '4'. The bass clef part has notes with accidentals and a circled '4'. There are also some handwritten annotations like 'b9' and '#b'.

(fma (rubato))

Handwritten musical notation for the fourth system, featuring a treble clef and a bass clef. The treble clef part has notes with accidentals and a circled '#'. The bass clef part has notes with accidentals and a circled '4'. There are also some handwritten annotations like '(b)' and '(fma -)'.

passionato (nicht schleppend) subito

Handwritten musical notation for the first system. The treble clef staff contains notes with accidentals (sharps and naturals) and rests, with some notes circled. The bass clef staff contains notes with accidentals. A circled '1' is written in the left margin.

Handwritten musical notation for the second system. The treble clef staff shows a melodic line with notes and rests. The bass clef staff shows a supporting line with notes and rests.

Handwritten musical notation for the third system. The treble clef staff features a complex melodic passage with many notes, some beamed together. The bass clef staff has notes with accidentals.

(2te+ poco rit - - -)

Handwritten musical notation for the fourth system. The treble clef staff has a melodic line with notes and rests. The bass clef staff has notes with accidentals. The system ends with a double bar line and a fermata.

Primo (legg.)

5/4

*pp*

(hervor) (betrachtet ihn in Schmerzen)...

*b*

Handwritten musical notation for the first system. The treble clef staff contains a melodic line starting with a triplet of eighth notes, followed by quarter notes, and ending with a half note. The bass clef staff contains a bass line with a quarter note, a half note, and a whole note marked with a flat and a 'b'.

(legg.)

Handwritten musical notation for the second system, marked "(legg.)". The treble clef staff features a complex melodic line with slurs and accents, including a triplet. The bass clef staff contains a bass line with quarter and eighth notes, some with flats.

Handwritten musical notation for the third system. The treble clef staff continues the melodic line with slurs and accents. The bass clef staff contains a bass line with quarter and eighth notes, some with flats.

Handwritten musical notation for the fourth system. The treble clef staff continues the melodic line with slurs and accents. The bass clef staff contains a bass line with quarter and eighth notes, some with flats.

erregt)

Handwritten musical notation for the section labeled "erregt)". It consists of two staves. The first staff has a treble clef and a key signature of one flat (B-flat). The second staff has a bass clef and a key signature of one flat. The notation includes various notes, rests, and dynamic markings. A circled "ff" (fortissimo) is present in the first measure of the first staff. The piece concludes with a double bar line.

frei (subito)

Handwritten musical notation for the section labeled "frei (subito)". It consists of two staves. The first staff has a treble clef and a key signature of one flat. The second staff has a bass clef and a key signature of one flat. The notation includes various notes, rests, and dynamic markings. A circled "ff" (fortissimo) is present in the first measure of the first staff. The piece concludes with a double bar line.

subito (frei

drängend

Handwritten musical notation for the section labeled "subito (frei) drängend". It consists of two staves. The first staff has a treble clef and a key signature of one flat. The second staff has a bass clef and a key signature of one flat. The notation includes various notes, rests, and dynamic markings. A circled "ff" (fortissimo) is present in the first measure of the first staff. The piece concludes with a double bar line.

ohne Zeit

Handwritten musical notation for the first system, labeled "ohne Zeit". It consists of a treble clef staff with a circled "7#", a bass clef staff with notes and accidentals, and a 9-measure rest below the bass staff.

Handwritten musical notation for the second system. It consists of a treble clef staff and a bass clef staff with notes and accidentals, and a 9-measure rest below the bass staff.

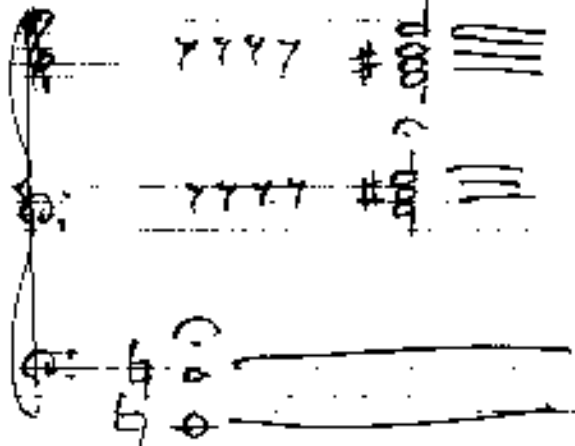
Zeit

Handwritten musical notation for the third system, labeled "Zeit". It consists of a treble clef staff and a bass clef staff with notes and accidentals, and a 9-measure rest below the bass staff.

Handwritten musical notation for the fourth system. It consists of a treble clef staff and a bass clef staff with notes and accidentals, and a 9-measure rest below the bass staff.



C Lupa



1979  
Hobby Publishing