

L.v. BEETHOVEN



W.A. MOZART



# NOTENHEFT

F. SCHUBERT



J. HAYDN



J. STRAUSS



(1)

Adolf Scherbaum

Allegro

Musik in 3 Teilen für Flöte + Harfe. 1878

Flöte

Harfe

(1)

Handwritten musical score for the first system. The top staff is in treble clef and the bottom staff is in bass clef. The music consists of three measures. The first measure has a treble clef with notes G4, A4, B4, C5, and a bass clef with notes G2, A2, B2, C3. The second measure has a treble clef with notes D5, E5, F5, G5 and a bass clef with notes D3, E3, F3, G3. The third measure has a treble clef with notes A5, B5, C6, D6 and a bass clef with notes A2, B2, C3, D3. Dynamic markings include  $f$  and  $ff$ . There are also slurs and accents.

Handwritten musical score for the second system, starting with a circled "2". The top staff is in treble clef and the bottom staff is in bass clef. The music consists of four measures. The first measure has a treble clef with notes G4, A4, B4, C5 and a bass clef with notes G2, A2, B2, C3. The second measure has a treble clef with notes D5, E5, F5, G5 and a bass clef with notes D3, E3, F3, G3. The third measure has a treble clef with notes A5, B5, C6, D6 and a bass clef with notes A2, B2, C3, D3. The fourth measure has a treble clef with notes E6, F6, G6, A6 and a bass clef with notes E3, F3, G3, A3. Dynamic markings include  $f$  and  $ff$ . There are also slurs and accents.

Handwritten musical score for the third system, starting with a circled "3". The top staff is in treble clef and the bottom staff is in bass clef. The music consists of four measures. The first measure has a treble clef with notes G4, A4, B4, C5 and a bass clef with notes G2, A2, B2, C3. The second measure has a treble clef with notes D5, E5, F5, G5 and a bass clef with notes D3, E3, F3, G3. The third measure has a treble clef with notes A5, B5, C6, D6 and a bass clef with notes A2, B2, C3, D3. The fourth measure has a treble clef with notes E6, F6, G6, A6 and a bass clef with notes E3, F3, G3, A3. Dynamic markings include  $f$  and  $ff$ . There are also slurs and accents.

Handwritten musical score for system 4. The system consists of two staves. The upper staff contains a treble clef, a key signature of one sharp (F#), and a common time signature (C). The lower staff contains a bass clef. The music includes various notes, rests, and chords. A circled number '4' is located at the bottom right of the system. The word 'dim' is written in the lower staff.

Handwritten musical score for system 5. The system consists of two staves. The upper staff contains a treble clef, a key signature of one sharp (F#), and a common time signature (C). The lower staff contains a bass clef. The music includes various notes, rests, and chords. A circled number '5' is located at the bottom right of the system.

Handwritten musical score for system 6. The system consists of two staves. The upper staff contains a treble clef, a key signature of one sharp (F#), and a common time signature (C). The lower staff contains a bass clef. The music includes various notes, rests, and chords. A circled number '6' is located at the bottom right of the system.

(correct)

brilliant

Flatterzunge

7

kaiserlich

8

kaiserlich

Handwritten musical score for system 8. The treble clef part begins with a melodic line marked with a sharp sign and a fermata, followed by a slur and the word "dim". The bass clef part provides a rhythmic accompaniment with slurs and the word "dim". A circled number "8" is located in the top right corner.

Handwritten musical score for system 9. The treble clef part features a melodic line with slurs and the word "p". The bass clef part has a rhythmic accompaniment with slurs and the word "p". A circled number "9" is in the top right corner.

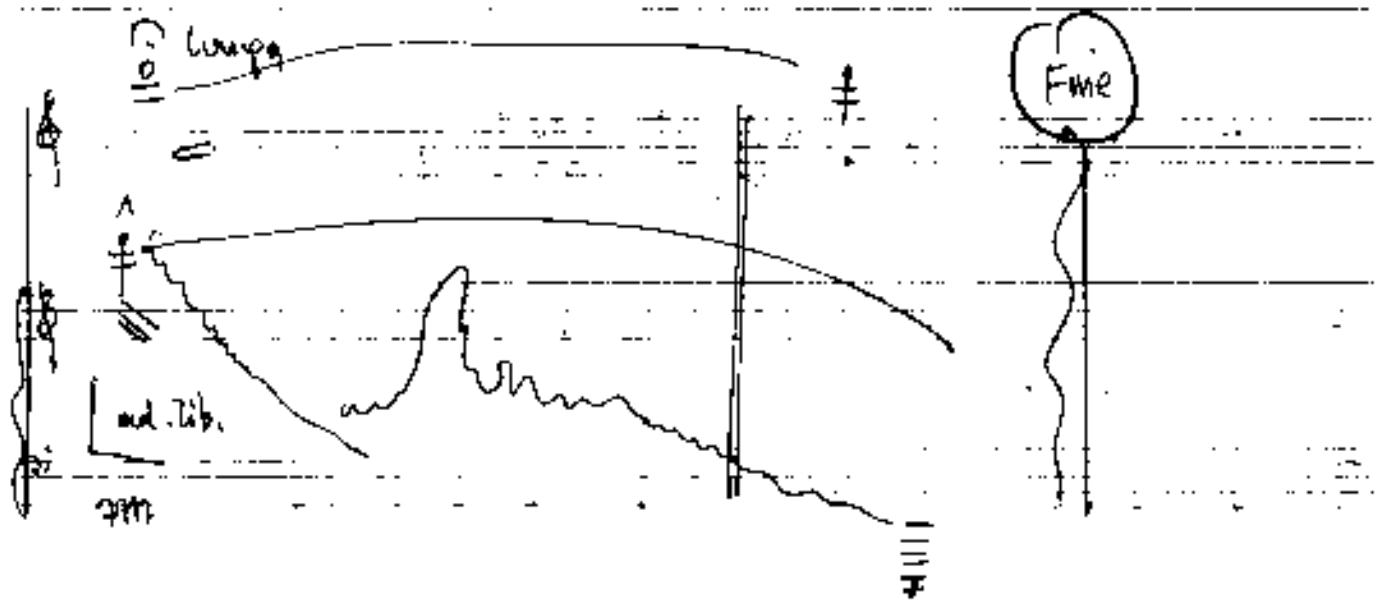
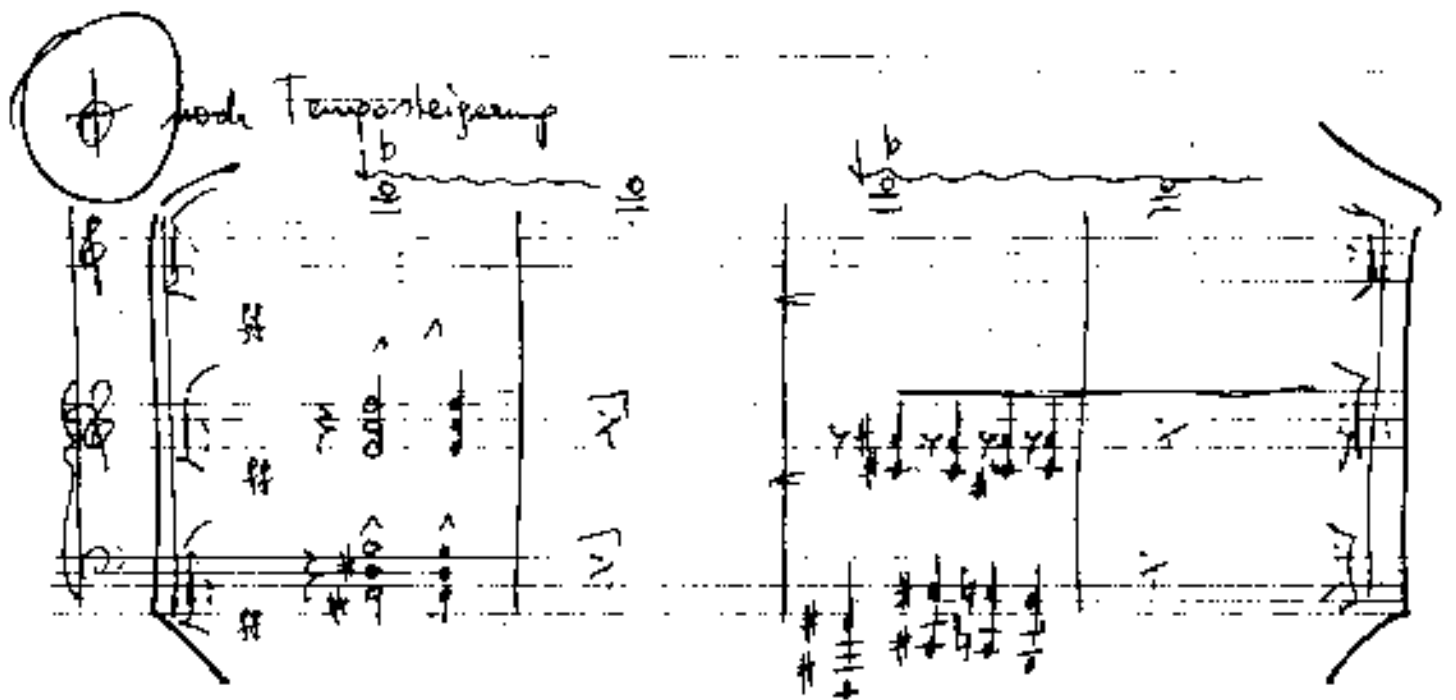
Handwritten musical score for system 10. The treble clef part has a melodic line with slurs and the word "dim". The bass clef part has a rhythmic accompaniment with slurs and the word "p". A circled number "10" is in the top right corner.

Flöte (Prin (1))

Handwritten musical notation for Flute (Prin) in treble clef. It consists of three staves. The first staff starts with a circled '1' and contains notes with dynamics p, f, f, and ff. The second staff has dynamics p, f, and ff. The third staff has dynamics p, f, ff, and pp. There are various slurs and accents throughout the passage.

Canto (rial vibrato)

Handwritten musical notation for Canto (rial vibrato) in treble clef. It consists of six staves. The first two staves have dynamics pp, p, and f. The third staff has dynamics p, f, and pp. The fourth staff has dynamics p and ff. The fifth staff has dynamics p and pp. The sixth staff has dynamics p and pp, and includes a circled '11' and the instruction 'da capo al ♯'. There are vibrato markings above several notes.





②

rubric (frei) (♩) (♩) ad lib.

Handwritten musical score for system 2, measures 1-3. It features a treble clef, a 3/6 time signature, and a key signature of one sharp (F#). The melody is written in a single staff with various notes, rests, and slurs. The piano accompaniment is in two staves, with the right hand playing chords and the left hand playing a simple bass line. A circled 'p' is written in the piano part.

①

Handwritten musical score for system 1, measures 1-3. It features a treble clef and a 3/6 time signature. The key signature changes from one sharp to one flat (F). The melody is written in a single staff with various notes, rests, and slurs. The piano accompaniment is in two staves, with the right hand playing chords and the left hand playing a simple bass line.

Handwritten musical score for system 2, measures 1-3. It features a treble clef and a 3/6 time signature. The key signature changes from one flat to one sharp (F#). The melody is written in a single staff with various notes, rests, and slurs. The piano accompaniment is in two staves, with the right hand playing chords and the left hand playing a simple bass line. A circled 'p' is written in the piano part.

2

Handwritten musical score for system 2. It features three staves: a treble clef staff at the top, an alto clef staff in the middle, and a bass clef staff at the bottom. The treble staff contains notes with accidentals (flats and sharps) and a dynamic marking of  $p$ . The alto staff has notes with a  $>dim$  marking. The bass staff has notes with a  $>$  marking. The system is enclosed in a large bracket.

3

(frei)

Handwritten musical score for system 3, labeled "(frei)". It features three staves: treble, alto, and bass clefs. The treble staff has notes with a  $p$  dynamic marking and a  $>$  marking. The alto staff has notes with a  $p$  marking and some wavy lines below it. The bass staff has notes with a  $p$  marking and wavy lines below it. The system is enclosed in a large bracket.

4

pesante

Handwritten musical score for system 4, labeled "pesante". It features three staves: treble, alto, and bass clefs. The treble staff has notes with a  $>$  marking. The alto staff has notes with a  $>$  marking. The bass staff has notes with a  $>$  marking. The system is enclosed in a large bracket.

(breit)

Handwritten musical score for the first system, labeled "(breit)". It features a treble clef staff with a melodic line containing notes with accidentals (sharps and flats) and slurs. Below it are two bass clef staves with chordal accompaniment. The notation includes various accidentals and dynamic markings like "pp".

5

(poco rit)

Handwritten musical score for the second system, labeled "5" and "(poco rit)". It continues the melodic and accompaniment lines from the first system. The notation includes slurs, accidentals, and dynamic markings like "pp".

6

Handwritten musical score for the third system, labeled "6". It features a treble clef staff with a melodic line that includes a section labeled "quarta gliss." with a wavy line. Below it are two bass clef staves with chordal accompaniment. The notation includes accidentals, dynamic markings like "pp", and a circled "pp" in the first measure.

7

Handwritten musical score for measures 7 and 8. Measure 7 features a flute line with a wavy vibrato pattern and a bass line with a few notes. Measure 8 continues the flute line with a wavy vibrato pattern and a bass line with a few notes.

Flöte / Flauto  
viel vibrato

(sich...)

8

Handwritten musical score for measure 8. The flute line starts with a wavy vibrato pattern and ends with a sharp attack. The bass line has notes with dynamics markings: pp, f, and >pp.

pp >pp

D.C. al

9

10

viel VIBRATO

Luipa

FIN

Handwritten musical score for measures 9 and 10. Measure 9 features a flute line with a wavy vibrato pattern and a bass line with notes and dynamics markings (pp, fpp). Measure 10 features a flute line with a wavy vibrato pattern and a bass line with notes and dynamics markings (pp, fpp).

3

VIVACE

Handwritten musical notation for the first system, measures 1-4. The top staff is in treble clef with a 3/4 time signature. The bottom staff is in bass clef. The music features a melodic line with slurs and accents, and a bass line with chords and single notes. A circled '3' is written in the left margin.

Handwritten musical notation for the second system, measures 5-8. The notation continues from the first system. The top staff has a melodic line with slurs and accents. The bottom staff has a bass line with chords and single notes. A circled '4' is written in the right margin.

Handwritten musical notation for the third system, measures 9-12. The top staff features a dense, rapid melodic passage with many slurs and accents. The bottom staff has a bass line with chords and single notes. A circled '5' is written in the right margin.

①

②

③

Handwritten musical score system 4. It features a grand staff with treble and bass clefs. The music is in a key with one sharp (F#) and a 3/4 time signature. The system contains three measures of music. The first measure has a treble clef and a bass clef. The second and third measures have a treble clef. The notation includes various notes, rests, and dynamic markings. A circled number '4' is located in the bottom right corner of the system.

Handwritten musical score system 5. It features a grand staff with treble and bass clefs. The music is in a key with one sharp (F#) and a 3/4 time signature. The system contains three measures of music. The first measure has a treble clef and a bass clef. The second and third measures have a treble clef. The notation includes various notes, rests, and dynamic markings. A circled number '5' is located in the bottom right corner of the system. A box labeled 'Coda' is present in the right margin.

Handwritten musical score system 6. It features a grand staff with treble and bass clefs. The music is in a key with one sharp (F#) and a 3/4 time signature. The system contains three measures of music. The first measure has a treble clef and a bass clef. The second and third measures have a treble clef. The notation includes various notes, rests, and dynamic markings. A circled number '6' is located in the bottom right corner of the system.

Handwritten musical score system 7. It features a grand staff with treble and bass clefs. The music is in a key with one sharp (F#) and a 3/4 time signature. The system contains three measures of music. The first measure has a treble clef and a bass clef. The second and third measures have a treble clef. The notation includes various notes, rests, and dynamic markings. A circled number '7' is located in the bottom right corner of the system.

Handwritten musical score for measures 6 and 7. Measure 6 features a piano part with a circled '6' and a treble clef staff with notes and accidentals. Measure 7 features a piano part with a circled '7' and a treble clef staff with notes and accidentals, including a 'ff' dynamic marking.

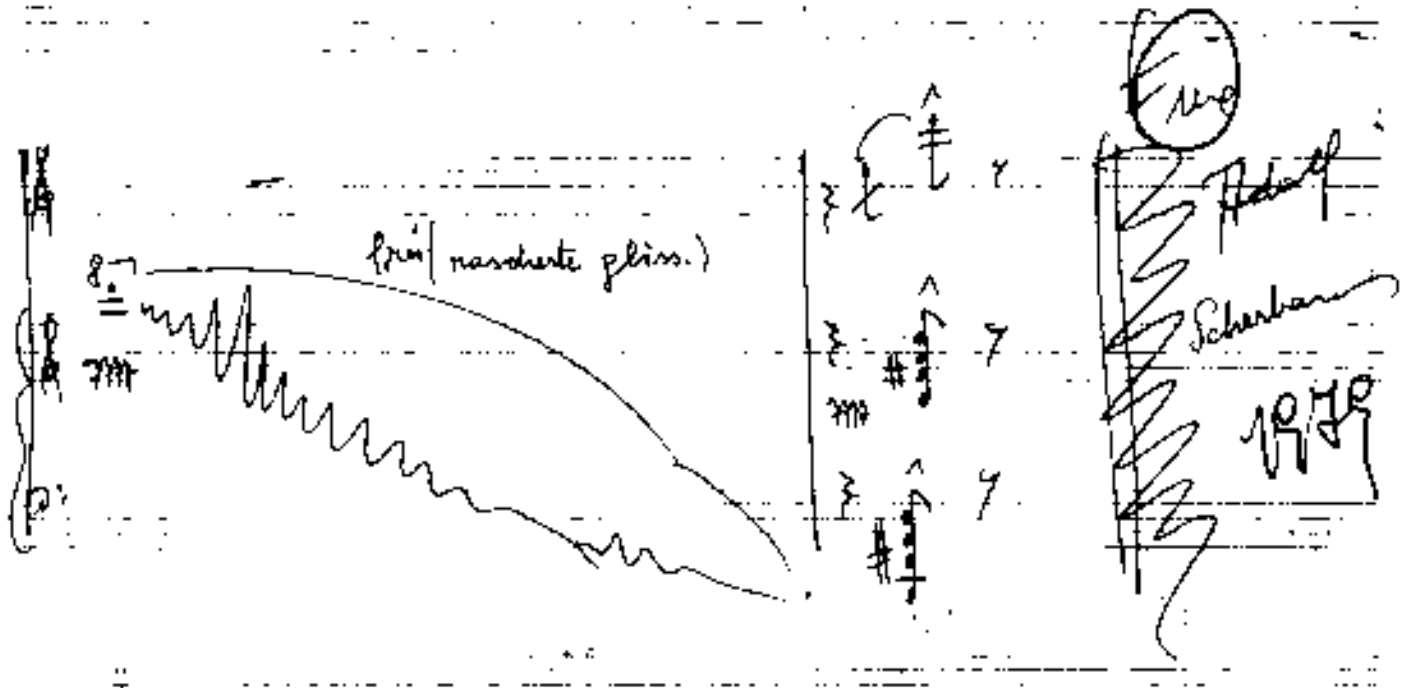
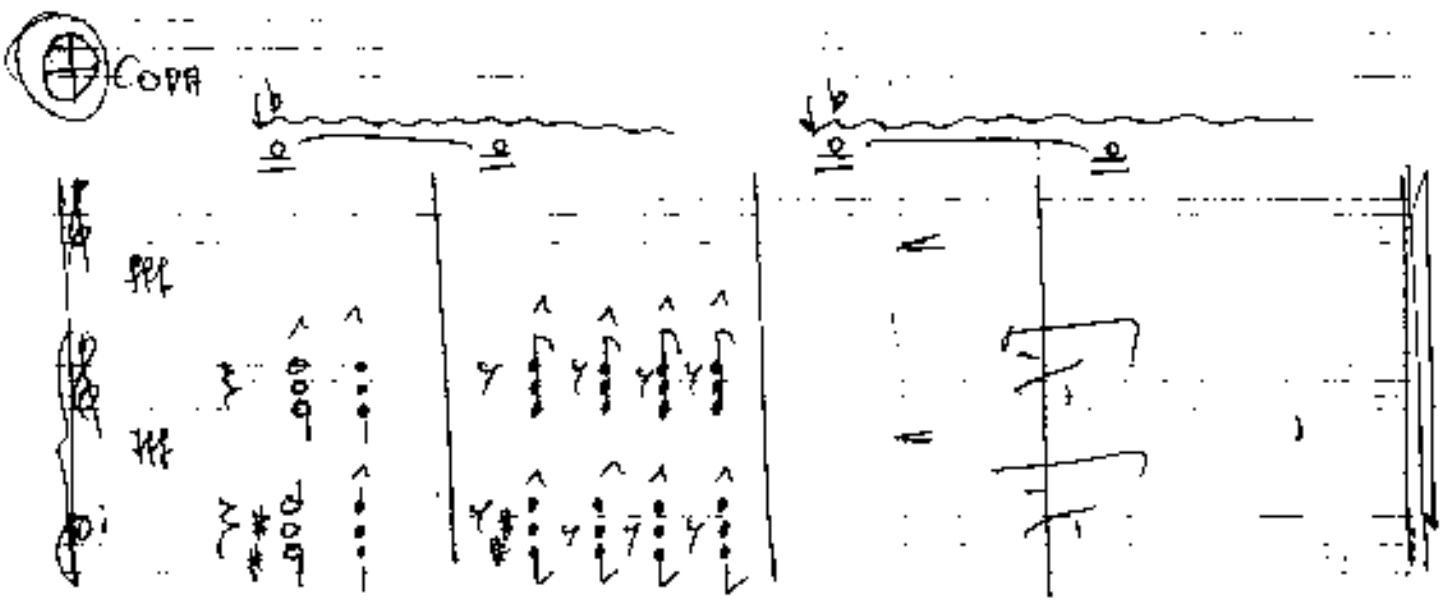
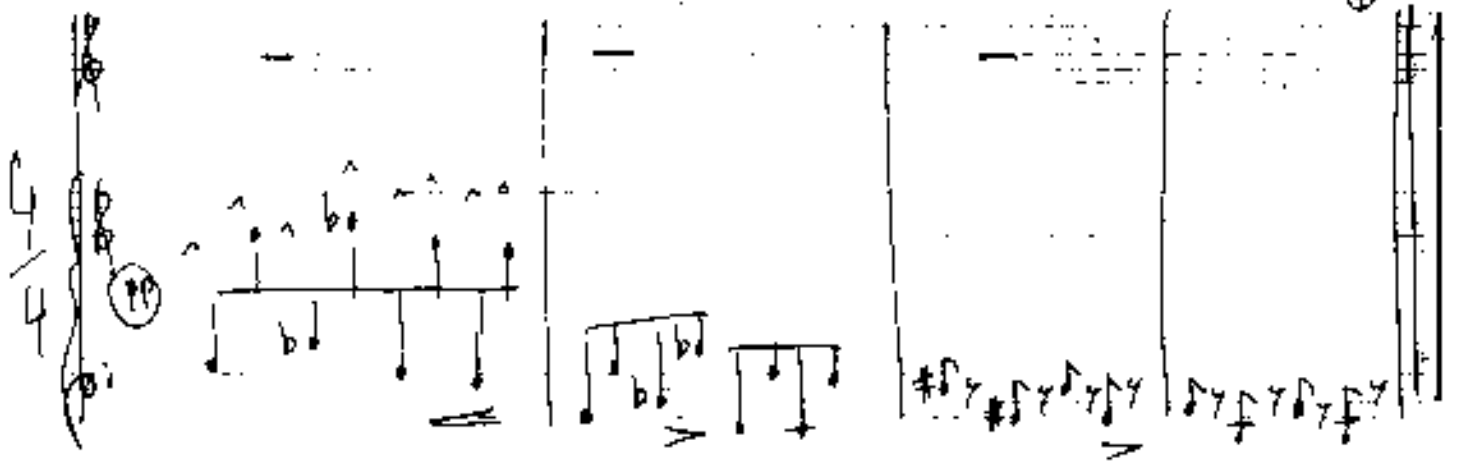
Handwritten musical score for measures 8 and 9. Measure 8 features a piano part with a circled '8' and a treble clef staff with notes and accidentals. Measure 9 features a piano part with a circled '9' and a treble clef staff with notes and accidentals, including a 'ff' dynamic marking.

Handwritten musical score for measures 10 and 11. Measure 10 features a piano part with a circled '10' and a treble clef staff with notes and accidentals. Measure 11 features a piano part with a circled '11' and a treble clef staff with notes and accidentals, including a 'ff' dynamic marking.

Handwritten musical score for measures 12 and 13. Measure 12 features a piano part with a circled '12' and a treble clef staff with notes and accidentals. Measure 13 features a piano part with a circled '13' and a treble clef staff with notes and accidentals, including a 'ff' dynamic marking.



D.C.  
al  $\oplus$  COOP



Fin  
 Scherban  
 1979