

Notenheft



Variationen im alten Stil für Orgel.

1981
St. Thomas ..

(Thema) v. J. S. Bach

Andante

(auf 6 Schläge) (als Schlußteil (ff) volles Werk.

(2te mit) ⊗

gibt nur für Schlußteil

lunga

Var. 1.

sehr ruhig

(Zweiter)

Var. 2 (Allegretto)

(2te rit)

Var. ③ Allegretto

legato

(26 + gut)

Variation ④

Allegro

Handwritten musical notation for the first system. The treble clef staff begins with a key signature of one sharp (F#) and a common time signature (C). The first measure contains a whole note chord with F# and C. The second measure features a complex rhythmic pattern with eighth notes and sixteenth notes, including a flat (Bb) and a sharp (F#). The third measure continues with similar rhythmic complexity, including a flat (Bb) and a sharp (F#). The bass clef staff has a whole note chord with F# and C in the first measure, followed by a half note chord with Bb and F# in the second measure, and a half note chord with F# and C in the third measure.

Handwritten musical notation for the second system. The treble clef staff starts with a whole note chord (F#, C) and a quarter note (G). The second measure has a complex rhythmic pattern with eighth notes and sixteenth notes, including a flat (Bb) and a sharp (F#). The third measure continues with similar rhythmic complexity, including a flat (Bb) and a sharp (F#). The bass clef staff has a whole note chord with F# and C in the first measure, followed by a half note chord with Bb and F# in the second measure, and a half note chord with F# and C in the third measure.

Handwritten musical notation for the third system. The treble clef staff starts with a whole note chord (F#, C) and a quarter note (G). The second measure has a complex rhythmic pattern with eighth notes and sixteenth notes, including a flat (Bb) and a sharp (F#). The third measure continues with similar rhythmic complexity, including a flat (Bb) and a sharp (F#). The bass clef staff has a whole note chord with F# and C in the first measure, followed by a half note chord with Bb and F# in the second measure, and a half note chord with F# and C in the third measure.

(Zweiteil)

Handwritten musical notation for the fourth system. The treble clef staff starts with a whole note chord (F#, C) and a quarter note (G). The second measure has a complex rhythmic pattern with eighth notes and sixteenth notes, including a flat (Bb) and a sharp (F#). The third measure continues with similar rhythmic complexity, including a flat (Bb) and a sharp (F#). The bass clef staff has a whole note chord with F# and C in the first measure, followed by a half note chord with Bb and F# in the second measure, and a half note chord with F# and C in the third measure.

Var. ⑤ (alla Fantasia)

sehr frei

frei

(frei)

(letzte + out)

Var. 6

lento (sehr ruhig)

Handwritten musical notation for the first system of 'Var. 6'. It features a treble and bass clef with a 3/2 time signature. The music includes various notes, rests, and dynamic markings like 'p' in circles. There are also some handwritten annotations like '9' and 'd'.

Handwritten musical notation for the second system of 'Var. 6'. It continues the piece with similar notation, including notes, rests, and dynamic markings.

Handwritten musical notation for the third system of 'Var. 6'. It concludes the piece with notes, rests, and dynamic markings.

(2te x gut)

(1poco mit)

2.

Variation ⑦

(1+f) 2+pp | 3+ff)

Vivace

Handwritten musical notation for the first system. The treble clef staff contains a melodic line with eighth and sixteenth notes, some beamed together. The bass clef staff contains a bass line with chords and rests. A fermata is placed over the final note of the treble staff.

Handwritten musical notation for the second system. The treble clef staff continues the melodic line. The bass clef staff features chords and rests. A fermata is placed over the final note of the treble staff.

Handwritten musical notation for the third system. The treble clef staff continues the melodic line. The bass clef staff features chords and rests. A fermata is placed over the final note of the treble staff. The handwritten instruction "(3te rit)" is written above the staff.

Handwritten musical notation for the fourth system. The treble clef staff contains a few notes and rests. The bass clef staff contains a few notes and rests. A double bar line is present at the end of the system.

Variation ⑧

frei (rubato)

(breit) rit.

4/4

77

Presto

breit (frei)

p

77

sehr breit (frei)

Presto

p

breit

appassionata (treibend)

3/2

F#

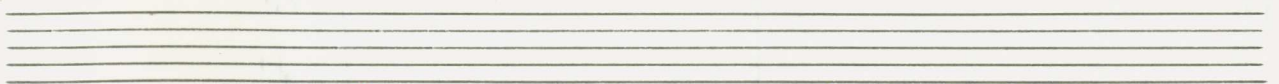
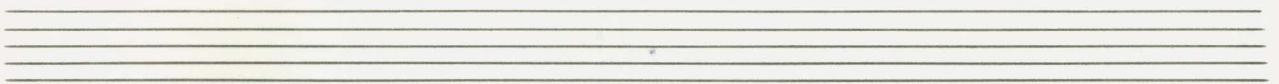
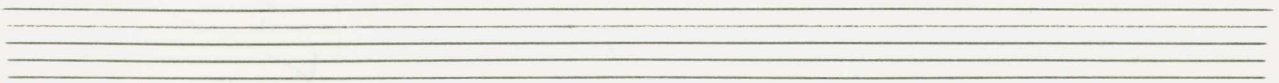
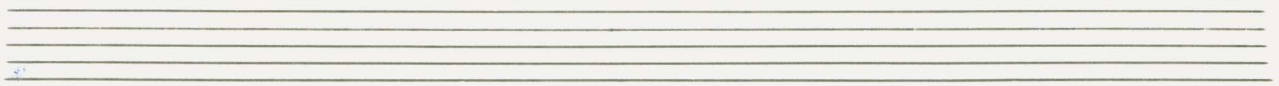
Handwritten musical notation for the first system. The treble clef part contains notes: G4, A4, B4, C5, B4, A4, G4. The bass clef part contains notes: G3, F3, E3, D3, C3, B2, A2. There are various rests and phrasing slurs.

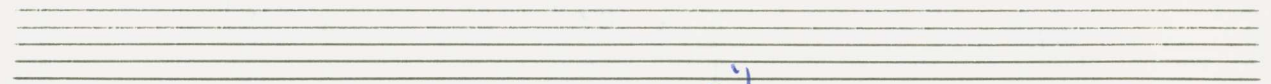
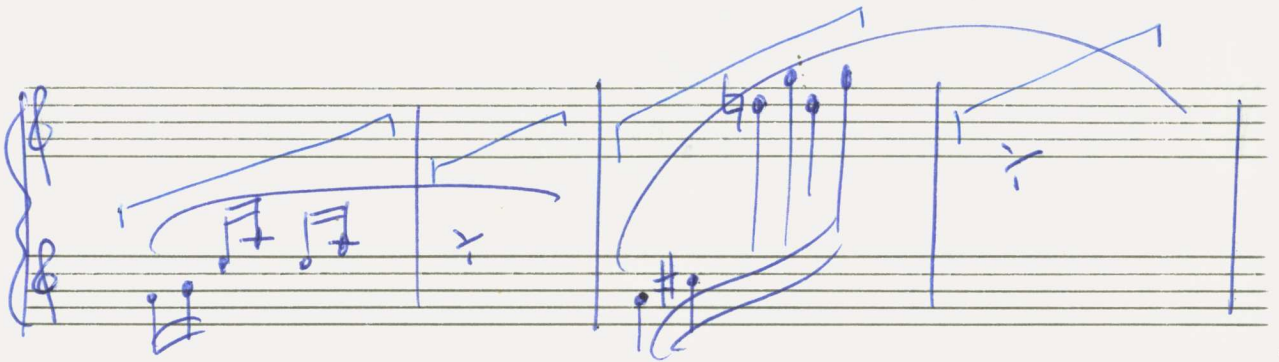
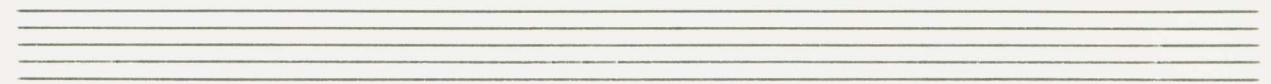
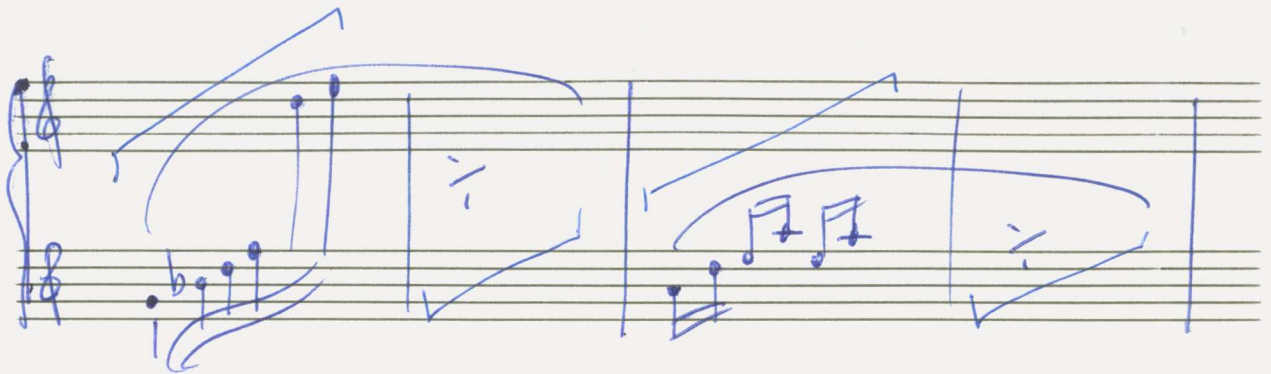
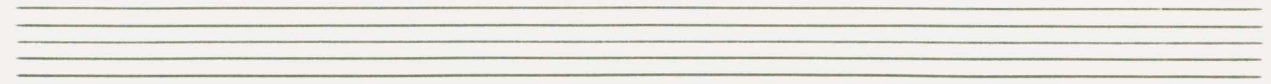
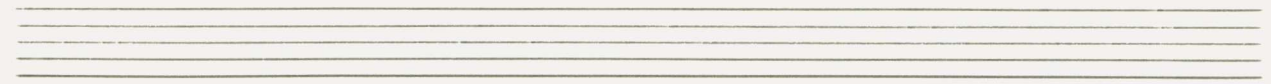
Handwritten musical notation for the second system. The treble clef part contains notes: B4, A4, G4, F4, E4, D4, C4, B3, A3, G3. The bass clef part contains notes: G3, F3, E3, D3, C3, B2, A2, G2, F2, E2, D2, C2, B1, A1. There are various rests and phrasing slurs.

Handwritten musical notation for the third system. A circled 'rit' marking is present at the beginning. The treble clef part contains notes: G4, A4, B4, C5, B4, A4, G4. The bass clef part contains notes: G3, F3, E3, D3, C3, B2, A2, G2, F2, E2, D2, C2, B1, A1. There are various rests and phrasing slurs.

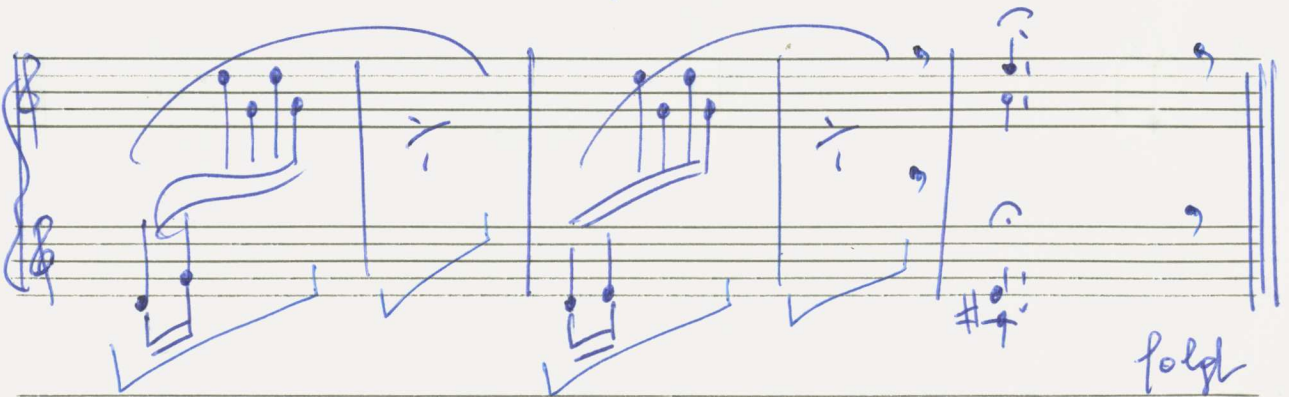
Handwritten musical notation for the fourth system. The treble clef part contains notes: G4, A4, B4, C5, B4, A4, G4. The bass clef part contains notes: G3, F3, E3, D3, C3, B2, A2, G2, F2, E2, D2, C2, B1, A1. The system ends with the word 'attacca' and an arrow pointing to the right.

Presto (legg.) (brilliant)





poco rit.---



folgt

Thema Anfang auf
Schluß

(aber sehr breit und **ff**)