

L.v. BEETHOVEN



W.A. MOZART



NOTENHEFT

F. SCHUBERT



J. HAYDN



J. STRAUSS



Konzert in 2 Teilen
für

Klarinette und pc.
Streichorchester

~~Adolf Scherbaum~~

ling

Jolo (in context)
bueh

Teil ①

①

rubato (frei)

Viol.
Vi.
Celli
+
Bass



Handwritten musical notation for the first system, measures 1-2. It includes staves for Violins (Viol.), Violas (Vi.), Cellos (Celli), and Basses (Bass). The notation features various notes, rests, and dynamic markings such as ff and f . The tempo marking "rubato (frei)" is present above the staves.

②

③

Handwritten musical notation for the second system, measures 3-4. It continues the instrumental parts for Violins, Violas, Cellos, and Basses. The notation includes complex rhythmic patterns and melodic lines with various articulations.

④

⑤

Handwritten musical notation for the third system, measures 5-6. This system includes parts for Violins (Viol.), Violas (Vi.), Cellos (Celli), and Basses (Bass). The notation features sustained notes with long horizontal lines, indicating a slower or more expressive section.

Solo klarinetille!
in C molto int!

ff - *4 frei*

②

poco rit ⑦

Lento

Solo frei

ff *rit*

⑧

ruhig fließend

10

11

Handwritten musical score for measures 10 and 11. The score is written in black ink on white paper. It features a piano part with a treble clef and a bass clef, and a vocal line with a soprano clef. The piano part includes a bass line with notes and rests, and a treble line with chords and melodic fragments. The vocal line has a melodic line with notes and rests, and a bass line with notes and rests. The key signature has one flat (B-flat), and the time signature is 4/4. The tempo is 'ruhig fließend'. The score is written in black ink on white paper.

12

Handwritten musical score for measures 12 and 13. The score is written in black ink on white paper. It features a piano part with a treble clef and a bass clef, and a vocal line with a soprano clef. The piano part includes a bass line with notes and rests, and a treble line with chords and melodic fragments. The vocal line has a melodic line with notes and rests, and a bass line with notes and rests. The key signature has one flat (B-flat), and the time signature is 4/4. The tempo is 'ruhig fließend'. The score is written in black ink on white paper.

13

Handwritten musical score for measures 14 and 15. The score is written in black ink on white paper. It features a piano part with a treble clef and a bass clef, and a vocal line with a soprano clef. The piano part includes a bass line with notes and rests, and a treble line with chords and melodic fragments. The vocal line has a melodic line with notes and rests, and a bass line with notes and rests. The key signature has one flat (B-flat), and the time signature is 4/4. The tempo is 'ruhig fließend'. The score is written in black ink on white paper.

Handwritten musical score for measures 14-15. The score consists of four staves. The top staff is in treble clef and contains a melodic line with various accidentals (sharps, naturals) and a fermata over the final note. The two middle staves contain sustained notes with dynamics like 'f' and 'p'. The bottom staff is in bass clef and contains a rhythmic line with stems and beams. Measure numbers 14 and 15 are circled on the right side.

Handwritten musical score for measures 15-16. The score consists of four staves. The top staff features a triplet of notes in measure 15. The middle staves show sustained notes with dynamics like 'f' and 'pp'. The bottom staff continues the rhythmic pattern. Measure numbers 15 and 16 are circled on the right side.

Handwritten musical score for measures 16-17. The score consists of four staves. The top staff shows a melodic phrase with a fermata over the final note. The middle staves contain sustained notes with dynamics like 'p'. The bottom staff continues the rhythmic pattern. Measure numbers 16 and 17 are circled on the right side.

Handwritten musical score for measures 17-19. The system includes a treble clef on the left, a bass clef on the right, and a central staff. Measure 17 features a complex melodic line in the treble with many slurs and accents, and a bass line with a few notes. Measure 18 shows a continuation of the treble line with a large slur, and the bass line has a few notes. Measure 19 is mostly empty in the treble and bass staves, with a few notes in the central staff. A circled number '17' is at the top right.

Handwritten musical score for measures 20-22. The system includes a treble clef on the left, a bass clef on the right, and a central staff. Measure 20 has a treble line with many notes and slurs, and a bass line with a few notes. Measure 21 shows a treble line with a large slur and a bass line with a few notes. Measure 22 is mostly empty in the treble and bass staves, with a few notes in the central staff. A circled number '20' is at the top right.

Handwritten musical score for measures 23-25. The system includes a treble clef on the left, a bass clef on the right, and a central staff. Measure 23 has a treble line with many notes and slurs, and a bass line with a few notes. Measure 24 shows a treble line with a large slur and a bass line with a few notes. Measure 25 is mostly empty in the treble and bass staves, with a few notes in the central staff. A circled number '23' is at the top right.

Handwritten musical score for measures 20-23. The score is written for three staves: Violin I (top), Violin II (middle), and Cello/Double Bass (bottom). The key signature is one sharp (F#) and the time signature is 3/4. Measure 20 features a melodic line in the Violin I part with accents and a 'poco. rit.' marking. The Violin II and Cello/Double Bass parts provide harmonic support with chords and moving lines. Measure 21 continues the melodic development in the Violin I part. Measure 22 shows a continuation of the melodic line. Measure 23 concludes the section with a final chord in the Violin I part.

Handwritten musical score for measures 24-27. The score is written for three staves: Violin I (top), Violin II (middle), and Cello/Double Bass (bottom). The key signature is one sharp (F#) and the time signature is 3/4. Measure 24 features a melodic line in the Violin I part with accents and a 'poco. rit.' marking. The Violin II and Cello/Double Bass parts provide harmonic support with chords and moving lines. Measure 25 continues the melodic development in the Violin I part. Measure 26 shows a continuation of the melodic line. Measure 27 concludes the section with a final chord in the Violin I part.

Handwritten musical score for measures 28-31. The score is written for three staves: Violin I (top), Violin II (middle), and Cello/Double Bass (bottom). The key signature is one sharp (F#) and the time signature is 3/4. Measure 28 features a melodic line in the Violin I part with accents and a 'poco. rit.' marking. The Violin II and Cello/Double Bass parts provide harmonic support with chords and moving lines. Measure 29 continues the melodic development in the Violin I part. Measure 30 shows a continuation of the melodic line. Measure 31 concludes the section with a final chord in the Violin I part.

Handwritten musical score for page 29. It features three staves with notes and rests. Above the staves, there are markings including "frit", "ff", and "p". The notes are primarily quarter and eighth notes. The staves are connected by a brace on the left side.

Handwritten musical score for page 32. It features three staves with notes and rests. Above the staves, there are markings including "lento (D)", "ff", "p", and "poco rit.". The notes are primarily quarter and eighth notes. The staves are connected by a brace on the left side. The tempo marking "poco rit." is written in a larger font at the bottom right of the page.

rubato (pre)

accel. →

This page contains a handwritten musical score for three staves. The first staff is marked 'rubato (pre)' and contains a melodic line with several notes and rests. The second and third staves provide accompaniment with chords and moving lines. The score concludes with an 'accel.' marking and a right-pointing arrow.

beiwert - except (noch accel.) →

beiwert - except (noch accel.) →

This page contains a handwritten musical score for three staves. The first staff is marked 'beiwert - except (noch accel.)' and contains a melodic line with several notes and rests. The second and third staves provide accompaniment with chords and moving lines. The score concludes with an 'accel.' marking and a right-pointing arrow.

Presto (Prestissimo) brillant -

Handwritten musical score for page 29, measures 1-3. The score is written for four staves: Treble Clef (top), Bass Clef (second), Bass Clef (third), and Bass Clef (bottom). The key signature is one sharp (F#). The tempo is marked 'Presto (Prestissimo) brillant'. The first measure contains a complex melodic line in the treble staff and rhythmic accompaniment in the bass staves. The second measure features a dense chordal texture in the treble staff. The third measure continues the melodic and rhythmic patterns. Dynamic markings include '(pizz) f=' and 'f='.

Handwritten musical score for page 30, measures 1-3. The score is written for four staves: Treble Clef (top), Bass Clef (second), Bass Clef (third), and Bass Clef (bottom). The key signature is one sharp (F#). The tempo is marked 'Presto (Prestissimo) brillant'. The first measure contains a complex melodic line in the treble staff and rhythmic accompaniment in the bass staves. The second measure features a dense chordal texture in the treble staff. The third measure continues the melodic and rhythmic patterns. Dynamic markings include '>' and '>='.

Handwritten musical score for system 31. The system consists of four staves. The top staff is in treble clef and contains a melodic line with various notes and rests, including some beamed eighth notes. The three staves below are in bass clef and contain accompaniment, primarily consisting of chords and rhythmic patterns. There are some markings above the notes, possibly indicating accents or slurs.

Handwritten musical score for system 32. The system consists of four staves. The top staff is in treble clef and contains a melodic line. The three staves below are in bass clef and contain accompaniment. There are dynamic markings such as $f =$ (forte) on the bass staves. On the right side of the system, there are three circled markings that appear to be "arco" or similar performance instructions.

Handwritten musical score for system 33. The system consists of four staves. The top staff is in treble clef and contains a melodic line. The three staves below are in bass clef and contain accompaniment. The notation is dense, with many notes and some complex rhythmic figures.

33

frei

Handwritten musical score for three staves. The top staff features a melodic line with notes, rests, and accidentals (sharps and naturals). The middle and bottom staves contain rhythmic patterns, with 'x' marks above notes and 'v' marks below notes. Dynamics such as 'pp' (pianissimo) and 'p' (piano) are indicated. A large bracket spans across the top of the three staves.

34

subit. marking

Handwritten musical score for three staves. The top staff has a melodic line with notes and accidentals. The middle and bottom staves show rhythmic patterns with 'x' and 'v' marks. Dynamics 'p' and 'pp' are used. A circled '33' is written at the bottom left of the page.

35

36

Handwritten musical score for measures 36-38. The score consists of four staves. The top staff contains a melodic line with notes and rests, including a dynamic marking 'p'. The second staff has a similar melodic line with notes and rests. The third and fourth staves appear to be accompaniment or bass lines, with notes and rests. There are various musical symbols such as slurs, accents, and dynamic markings throughout the system.

37

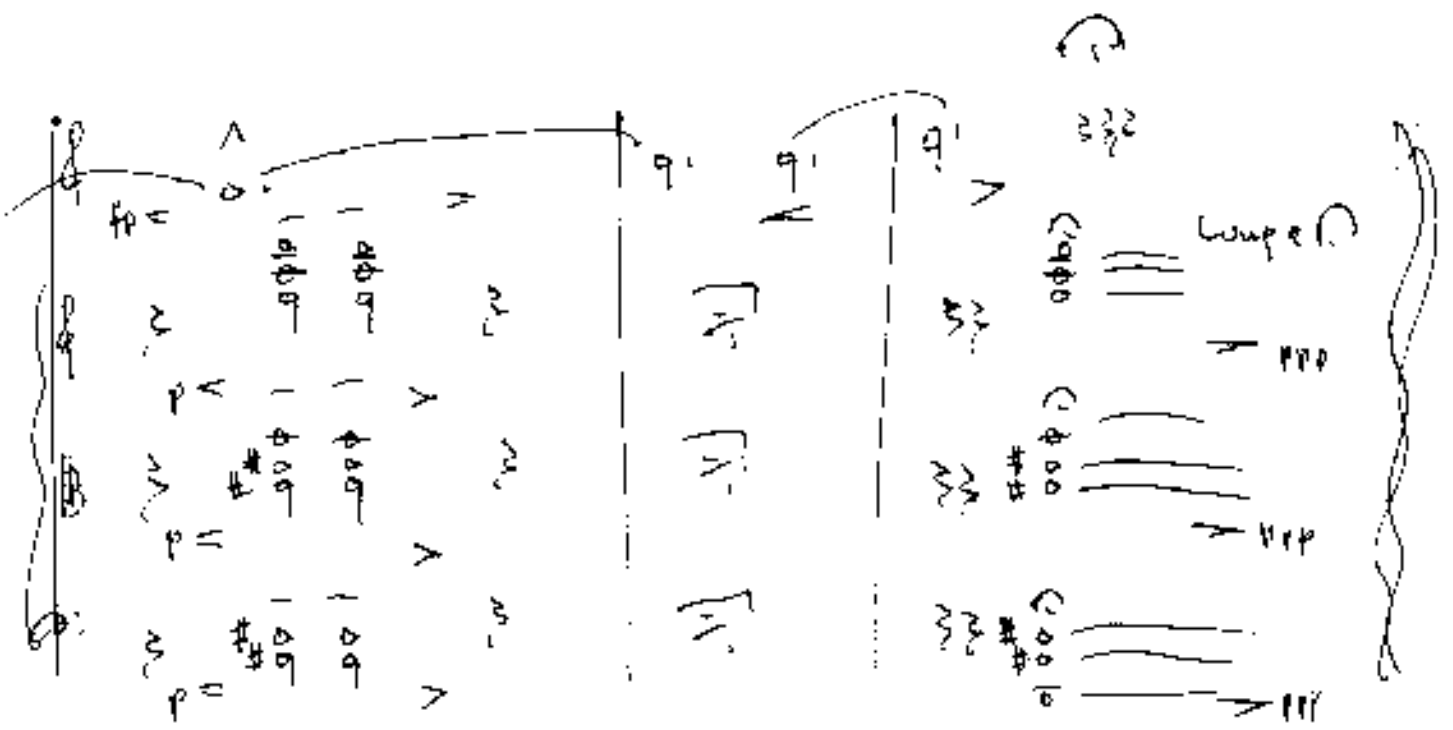
Handwritten musical score for measures 39-41. The score consists of four staves. The top staff has a melodic line with notes and rests, including a dynamic marking 'p'. The second staff has a melodic line with notes and rests, including a dynamic marking 'f'. The third and fourth staves have accompaniment with notes and rests, including a dynamic marking 'f'. There are various musical symbols such as slurs, accents, and dynamic markings throughout the system.

38

Handwritten musical score for measures 42-44. The score consists of four staves. The top staff has a melodic line with notes and rests, including a dynamic marking 'p'. The second staff has a melodic line with notes and rests, including a dynamic marking 'pp'. The third and fourth staves have accompaniment with notes and rests, including a dynamic marking 'pp'. There are various musical symbols such as slurs, accents, and dynamic markings throughout the system.

Barro

quit



Teil ②

slarpem

Handwritten musical score for woodwinds. The top staff is marked "in c" and "motiv". It features a melodic line with dynamic markings like *pp*, *f*, and *p*. A circled letter "A" is placed above the staff. Below it, another staff is marked with a circled "B". The third staff has a circled "C" and the word "coll." written above it. The fourth staff has a circled "D". The music includes various notes, rests, and slurs.

Handwritten musical score for strings. The top staff is labeled "Viol." and the second "Br.". The third staff is labeled "CtB". The music consists of rhythmic patterns and chords. A circled "A" is above the first staff, and a circled "2" is at the end of the section.

Handwritten musical score for solo instruments. The top staff is labeled "Solo". It features a melodic line with dynamic markings like *pp* and *f*. A circled "3" is at the end of the section. Below the solo staff are four staves for other instruments, each starting with a dynamic marking of *ffp*.

Fantasie für Klarinette + großes Streichorchester
 1981 (Rudolf Scherbaum) Linz Wien

Presto

Violin

Handwritten musical score for the first system, measures 1-4. The violin part has a melodic line with various ornaments and slurs. The piano accompaniment consists of chords and arpeggiated figures. A circled '4' is at the end of the system.

Handwritten musical score for the second system, measures 5-8. The violin part continues with a melodic line. The piano accompaniment includes chords and arpeggios. A circled '5' is at the end of the system.

Handwritten musical score for the third system, measures 9-12. The violin part continues with a melodic line. The piano accompaniment includes chords and arpeggios. A circled '6' is at the end of the system.

Handwritten circled number '6' with some scribbles.

Handwritten musical score for the first system, measures 8-11. The system includes a vocal line and three piano accompaniment staves. The vocal line features a melodic line with various ornaments and a final measure marked with a circled 8. The piano accompaniment consists of three staves with chords and melodic fragments.

Handwritten musical score for the second system, measures 12-15. This system includes staves for Violin I, Violin II, and Cello/Double Bass. The Violin I and II parts have melodic lines with ornaments, while the Cello/Double Bass part provides harmonic support with chords and a melodic line.

Handwritten musical score for the third system, measure 16. This system features a solo vocal line with a complex melodic line, including a trill and various ornaments, ending with a circled 16.

Handwritten musical score for the fourth system, measures 17-20. This system includes a solo vocal line and a piano accompaniment line. The vocal line has a melodic line with ornaments, and the piano accompaniment includes the instruction "Ciel alle piz" and a melodic line.

Handwritten musical score for the fifth system, measures 21-24. This system features a piano accompaniment with two staves. The upper staff has a melodic line with ornaments, and the lower staff has a harmonic line with chords and a melodic line.

Handwritten musical score for measures 12 and 13. The notation includes treble and bass clefs, various notes with accidentals (sharps, flats, naturals), and dynamic markings such as $f =$ and $f <$. Measure 12 ends with a circled measure number 12.

Handwritten musical score for measures 14 and 15. The notation includes treble and bass clefs, notes with accidentals, and dynamic markings such as $f =$. Measure 14 ends with a circled measure number 14.

Handwritten musical score for measures 16 and 17. The notation includes treble and bass clefs, notes with accidentals, and dynamic markings such as $f =$. Measure 16 ends with a circled measure number 16.

Handwritten musical score for measures 18 and 19. The notation includes treble and bass clefs, notes with accidentals, and dynamic markings such as $f =$. Measure 18 ends with a circled measure number 18.

Handwritten musical score for measures 20 and 21. The notation includes treble and bass clefs, notes with accidentals, and dynamic markings such as ff . Measure 20 ends with a circled measure number 20.

Handwritten musical score for measures 22 and 23. The notation includes treble and bass clefs, notes with accidentals, and dynamic markings such as ff . Measure 22 ends with a circled measure number 22.

Handwritten musical score for strings, measures 19-23. The score consists of four staves. The first staff has a treble clef and a key signature of one sharp (F#). The other three staves have bass clefs. The music includes various notes, slurs, and dynamics such as *pp* and *dim*. A circled measure number '19' is located at the top right.

1. P. lassen 4 Tenete (Streicher) *pp* ← (als Block A) sempre cresc. //

Handwritten musical score for Solo and Block, measures 20-21. The Solo part is on a treble clef staff and the Block part is on a bass clef staff. The Solo part contains notes with slurs and accents. The Block part is a long, low note. Measure numbers 20 and 21 are circled.

Handwritten musical score for Solo and Block, measures 21-22. The Solo part is on a treble clef staff and the Block part is on a bass clef staff. The Solo part contains notes with slurs and accents. The Block part is a long, low note. Measure numbers 21 and 22 are circled.

Handwritten musical score for Solo and Block, measures 22-23. The Solo part is on a treble clef staff and the Block part is on a bass clef staff. The Solo part contains notes with slurs and accents. The Block part is a long, low note. Measure numbers 22 and 23 are circled.

Handwritten musical notation for measures 22-23. The top staff features a melodic line with a fermata and a dynamic marking 'f'. The bottom staff has a bass line with a fermata and the label 'Block 8'.

Handwritten musical notation for measures 23-24. The top staff has a melodic line with various accidentals and dynamics. The bottom staff has a bass line with a fermata and the label 'Block 9'.

Handwritten musical notation for measures 24-25. The top staff has a melodic line with a fermata and a dynamic marking 'p'. The bottom staff has a bass line with a fermata and the label 'Block 10'.

Handwritten musical notation for measures 25-27. The top staff has a melodic line with a fermata and a dynamic marking 'pp'. The bottom staff has a bass line with a fermata and the label 'Block 11'.

Solo Violini

29

allegro

Prestissimo (non 14⁺)

33

37

Handwritten musical score for three staves. The top staff is in treble clef with a key signature of one sharp (F#) and a common time signature (C). The word "Faccino" is written above the first staff. The music consists of three measures, each containing a whole note chord. The notes in the three staves are as follows:

- Measure 1: Treble clef has notes G4, A4, B4, C5. Middle staff has notes G3, A3, B3, C4. Bass staff has notes G2, A2, B2, C3.
- Measure 2: Treble clef has notes G4, A4, B4, C5. Middle staff has notes G3, A3, B3, C4. Bass staff has notes G2, A2, B2, C3.
- Measure 3: Treble clef has notes G4, A4, B4, C5. Middle staff has notes G3, A3, B3, C4. Bass staff has notes G2, A2, B2, C3.

Handwritten musical score for three staves. The top staff is in treble clef with a key signature of one flat (Bb) and a common time signature (C). The music consists of three measures, each containing a whole note chord. The notes in the three staves are as follows:

- Measure 1: Treble clef has notes G4, A4, B4, C5. Middle staff has notes G3, A3, B3, C4. Bass staff has notes G2, A2, B2, C3.
- Measure 2: Treble clef has notes G4, A4, B4, C5. Middle staff has notes G3, A3, B3, C4. Bass staff has notes G2, A2, B2, C3.
- Measure 3: Treble clef has notes G4, A4, B4, C5. Middle staff has notes G3, A3, B3, C4. Bass staff has notes G2, A2, B2, C3.

There are large scribbles and a large loop on the right side of the page, extending from the second staff down to the bottom of the page.