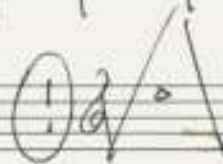


(7) Teile für Flöte und
Klavier)

(nach Motiven
spanischer Volkslieder)

1979 - 1981 -

Adolf Scherbaum



Tanz aus Salamanka

1

Allegro

f

Handwritten musical score for the first system. It consists of two staves: a treble clef staff and a grand staff (treble and bass clefs). The time signature is 4/4, indicated by a circled '4' and a circled 'f' (forte). The key signature has one flat (B-flat). The first two measures show a piano introduction with chords in the left hand and rests in the right hand. A double bar line with repeat dots follows. The third measure begins with a forte dynamic and a melodic line in the right hand. The fourth measure continues the melody with a slur and an accent. The fifth measure shows a chord in the right hand and a rest in the left hand.

Handwritten musical score for the second system. It consists of two staves. The treble clef staff continues the melody from the first system, with slurs and accents. The grand staff provides harmonic support with chords and rests. A forte dynamic is marked in the fifth measure of this system.

Handwritten musical score for the third system. The treble clef staff features a melodic line with slurs and accents. The grand staff continues with chords and rests. A forte dynamic is marked in the first measure of this system.

(pr. out)

pesante

ff

Tempo ①

ff (p)

ff (p)

(out... frei)

ff

ff

(Tempo 1.)

Accel.

3mp

Accel. →

meno

(rit)

f

(3+)

Allegro — *Accel.* →

ff

Presto

ff

② La flor de la Canela

Langsam schreitend

Handwritten musical notation for the first system. The score is in 6/8 time, indicated by a circled '6' and a quarter note. The tempo is 'Langsam schreitend'. The key signature has one flat (B-flat). The first staff (treble clef) contains a melodic line starting with a half note G4, followed by a quarter rest, and then a quarter note G4 with an accent and a slur. The second staff (bass clef) contains a bass line starting with a half note G2, followed by a quarter note G2, and then a quarter note G2 with an accent and a slur. The third staff (bass clef) contains a bass line starting with a half note G2, followed by a quarter note G2, and then a quarter note G2 with an accent and a slur. The fourth staff (bass clef) contains a bass line starting with a half note G2, followed by a quarter note G2, and then a quarter note G2 with an accent and a slur.

Handwritten musical notation for the second system. The first staff (treble clef) contains a melodic line starting with a half note G4, followed by a quarter note G4, and then a quarter note G4 with an accent and a slur. The second staff (bass clef) contains a bass line starting with a half note G2, followed by a quarter note G2, and then a quarter note G2 with an accent and a slur. The third staff (bass clef) contains a bass line starting with a half note G2, followed by a quarter note G2, and then a quarter note G2 with an accent and a slur. The fourth staff (bass clef) contains a bass line starting with a half note G2, followed by a quarter note G2, and then a quarter note G2 with an accent and a slur.

Handwritten musical notation for the third system. The first staff (treble clef) contains a melodic line starting with a half note G4, followed by a quarter note G4, and then a quarter note G4 with an accent and a slur. The second staff (bass clef) contains a bass line starting with a half note G2, followed by a quarter note G2, and then a quarter note G2 with an accent and a slur. The third staff (bass clef) contains a bass line starting with a half note G2, followed by a quarter note G2, and then a quarter note G2 with an accent and a slur. The fourth staff (bass clef) contains a bass line starting with a half note G2, followed by a quarter note G2, and then a quarter note G2 with an accent and a slur.

Handwritten musical score for the first system. The top staff is marked with a treble clef and a key signature of one flat (B-flat). The word "Congo" is written above the staff. The music features a melodic line with slurs and accents, and a bass line with a prominent bass clef and a low register. Dynamics include p and pp . A circled "rit" is written above the first measure.

Handwritten musical score for the second system. The top staff is marked with a treble clef and a key signature of one flat. The word "animato" is written above the staff. The music features a melodic line with slurs and accents, and a bass line with a prominent bass clef and a low register. Dynamics include p . A circled "rit" is written above the first measure.

Handwritten musical score for the third system. The top staff is marked with a treble clef and a key signature of one flat. The music features a melodic line with slurs and accents, and a bass line with a prominent bass clef and a low register. Dynamics include f and p . A circled "rit" is written above the first measure.

③ Malagueña

Allegretto

(3+)

erste + Allegretto
2. + Allegro (3. + Presto)

Handwritten musical score for the first system. The top staff (treble clef) contains a whole rest. The bottom staff (piano part) begins with a forte (**ff**) dynamic and a melodic line starting on a flat note (Bb). The piano part includes several slurs and accents over the notes. The system concludes with a double bar line.

Handwritten musical score for the second system. The top staff (treble clef) features a melodic line with a forte (**ff**) dynamic, slurs, and accents. The bottom staff (piano part) starts with a circled '5' and contains several chords and slurs. The system ends with a double bar line.

Handwritten musical score for the third system. The top staff (treble clef) has a melodic line with a forte (**ff**) dynamic, slurs, and accents, including a triplet of notes. The bottom staff (piano part) contains chords and slurs. The system concludes with a final dynamic marking of **ff** and a slur over a note.

Handwritten musical score for the first system. The top staff is for the flute, showing a melodic line with trills, grace notes, and a fermata. The bottom two staves are for the piano, with the right hand playing eighth-note patterns and the left hand providing a simple accompaniment.

Handwritten musical score for the second system. The flute part continues with similar melodic motifs and trills. The piano accompaniment features a change in the right-hand pattern and a more active left-hand line.

Handwritten musical score for the third system. The flute part concludes with a final melodic phrase and a flourish. The piano accompaniment ends with a simple chordal structure.

Handwritten musical score for the first system. The treble clef staff contains a melody in G major (one sharp) with a common time signature. The melody features eighth and sixteenth notes, slurs, and ornaments. The piano accompaniment is in the bass clef, showing chords and single notes.

Handwritten musical score for the second system. The treble clef staff has rests. The piano accompaniment continues with eighth notes in the right hand and chords in the left hand. A circled 'P' is present in the right hand.

Handwritten musical score for the third system. The treble clef staff starts with "Prestissimo" and "Tempo" markings. It features a dense sixteenth-note passage. The piano accompaniment has rests. A circled "ff" and "rubato" markings are in the left hand.

No. 4 (Tirana)

(♩) *Appassionata*

Handwritten musical score for the first system. The treble clef staff contains a melodic line with a key signature of one sharp (F#) and a common time signature. The piano part is written in a grand staff (piano and bass). The piano part includes a circled 'p' dynamic marking.

Handwritten musical score for the second system. The treble clef staff continues the melodic line. The piano part includes a circled 'f' dynamic marking.

Handwritten musical score for the third system. The system is marked "Ad lib" and "rit". It concludes with a "CODA" symbol. The piano part includes a circled 'p' dynamic marking.

etwas garbher

Handwritten musical score for 'etwas garbher'. The score is written on three staves: two treble clefs and one bass clef. The key signature is G major (one sharp). The first staff has a circled 'p' and a circled 'f'. The second staff has a circled 'p' and a circled 'f'. The third staff has a circled 'p' and a circled 'f'. The music features various notes, rests, and dynamic markings.

Handwritten musical score for 'etwas garbher' (continued). The score is written on three staves: two treble clefs and one bass clef. The key signature is G major (one sharp). The first staff has a circled 'f' and the word 'romantisch' written below it. The second staff has a circled 'f'. The third staff has a circled 'f'. The music features various notes, rests, and dynamic markings.

supra stromato

Handwritten musical score for 'supra stromato'. The score is written on three staves: two treble clefs and one bass clef. The key signature is G major (one sharp). The first staff has a circled 'ff'. The second staff has a circled 'f'. The third staff has a circled 'f'. The music features various notes, rests, and dynamic markings.

(poco rit) zurücke

(frei) *(rit + din)*

Flöte *(frei)*

D.C. al

⊕ CODA

ad libitum: kein D.C. sondern weiter)

COFF
 Tempo 1.)

(rit)

Handwritten musical score for the first system. The treble clef staff has a key signature of one sharp (F#) and a piano staff with a key signature of one flat (Bb). The treble staff contains a series of chords with a slur and a fermata over the final chord. The piano staff contains a series of chords with a slur and a fermata over the final chord. Dynamics include *ff* and a circled #. The tempo marking "(rit)" is written above the treble staff.

solo whip)

(rit)

Handwritten musical score for the second system. The treble clef staff has a key signature of one sharp (F#) and a piano staff with a key signature of one flat (Bb). The treble staff contains a series of chords with a slur and a fermata over the final chord. The piano staff contains a series of chords with a slur and a fermata over the final chord. Dynamics include *p* and *pp*. The tempo marking "(rit)" is written above the treble staff.

(rit)

Cento

Handwritten musical score for the third system. The treble clef staff has a key signature of one sharp (F#) and a piano staff with a key signature of one flat (Bb). The treble staff contains a series of chords with a slur and a fermata over the final chord. The piano staff contains a series of chords with a slur and a fermata over the final chord. Dynamics include *pp*. The tempo marking "(rit)" is written above the treble staff.

5 Bolero

Allegro

Handwritten musical score for the first system. It features a treble clef and a 3/4 time signature. The music is written on a grand staff with three staves. The first staff contains a whole rest. The second staff has a circled 'p' (piano) dynamic marking and a circled 'f' (forte) dynamic marking. The third staff shows a series of notes with accents and a circled 'f' dynamic marking.

Handwritten musical score for the second system. It features a treble clef and a 3/4 time signature. The music is written on a grand staff with three staves. The first staff contains a series of notes with accents and a circled 'p' dynamic marking. The second staff has a circled 'p' dynamic marking. The third staff shows a series of notes with accents and a circled 'p' dynamic marking.

Handwritten musical score for the third system. It features a treble clef and a 3/4 time signature. The music is written on a grand staff with three staves. The first staff contains a series of notes with accents and a circled 'p' dynamic marking. The second staff has a circled 'p' dynamic marking. The third staff shows a series of notes with accents and a circled 'p' dynamic marking.

Handwritten musical score for the first system. The treble clef part begins with a quarter note G4, followed by a quarter note A4 with a fermata, and a quarter note B4 with a fermata. A slur covers the next two measures, containing a half note chord of G4 and A4, and a half note chord of G4 and B4. The bass clef part starts with a quarter note G3, followed by a quarter note F3, and a quarter note E3. A fermata is placed over the first measure. The second measure contains a whole rest. The third measure contains a whole rest. The fourth measure contains a whole rest.

Handwritten musical score for the second system. The treble clef part begins with a quarter note G4, followed by a quarter note A4 with a fermata, and a quarter note B4 with a fermata. A slur covers the next two measures, containing a half note chord of G4 and A4, and a half note chord of G4 and B4. The bass clef part starts with a quarter note G3, followed by a quarter note F3, and a quarter note E3. A fermata is placed over the first measure. The second measure contains a whole rest. The third measure contains a whole rest. The fourth measure contains a whole rest.

Handwritten musical score for the third system. The treble clef part begins with a quarter note G4, followed by a quarter note A4 with a fermata, and a quarter note B4 with a fermata. A slur covers the next two measures, containing a half note chord of G4 and A4, and a half note chord of G4 and B4. The bass clef part starts with a quarter note G3, followed by a quarter note F3, and a quarter note E3. A fermata is placed over the first measure. The second measure contains a whole rest. The third measure contains a whole rest. The fourth measure contains a whole rest.

Handwritten musical score for the first system. The top staff is for the flute, and the bottom staff is for the piano. The flute part begins with a dynamic marking f and a fermata. The piano part also begins with a dynamic marking f and a fermata. The key signature has one sharp (F#).

Handwritten musical score for the second system. The top staff is for the flute, and the bottom staff is for the piano. The flute part begins with a dynamic marking f and a fermata. The piano part also begins with a dynamic marking f and a fermata. The key signature has one sharp (F#).

Handwritten musical score for the third system. The top staff is for the flute, and the bottom staff is for the piano. The flute part begins with a dynamic marking f and a fermata. The piano part also begins with a dynamic marking f and a fermata. The key signature has one sharp (F#).

Handwritten musical score for the first system. The top staff is for the flute, showing rapid sixteenth-note passages with dynamic markings like f and mf . The bottom two staves are for the piano, with chords and a simple melodic line in the left hand.

Handwritten musical score for the second system. The flute part continues with similar textures, including a f dynamic marking. The piano accompaniment features chords and a melodic line with some grace notes.

Handwritten musical score for the third system. It begins with the tempo marking "Presto". The flute part has a ff dynamic marking. The piano accompaniment includes a signature "C. Otto Otto" and a large, decorative flourish at the end of the system.

⑥ Portugiesisches Lied.

languetto (ruhig —)

Handwritten musical score for the first system. The treble clef staff contains a melodic line starting with a whole rest, followed by a series of notes: G4, A4, B4, C5, B4, A4, G4, F#4. The bass clef staff contains a bass line starting with a whole rest, followed by notes: G3, A3, B3, C4, B3, A3, G3, F#3. Dynamics include a circled 'p' in both staves. There are various articulation marks like accents and slurs.

Handwritten musical score for the second system. The treble clef staff continues the melody with notes: G4, A4, B4, C5, B4, A4, G4, F#4. The bass clef staff continues the bass line with notes: G3, A3, B3, C4, B3, A3, G3, F#3. Dynamics include 'f' and 'p' in the treble staff, and a circled 'p' in the bass staff. There are various articulation marks like accents and slurs.

Handwritten musical score for the third system. The treble clef staff continues the melody with notes: G4, A4, B4, C5, B4, A4, G4, F#4. The bass clef staff continues the bass line with notes: G3, A3, B3, C4, B3, A3, G3, F#3. Dynamics include 'f' in the treble staff and a circled 'f' in the bass staff. There are various articulation marks like accents and slurs.

(rit.)

Tempo 1

(rit.)

gr. rit.

Lunga

Pedal

7

Polo -

Finale

Allegro

(schl. bewegt) bewegt

Handwritten musical score for the first system. It consists of two staves: a treble clef staff and a bass clef staff. The time signature is 3/4. The key signature has two flats (B-flat and E-flat). The first measure of the treble staff has a 3 over it. The first measure of the bass staff has a *ff* marking. The music features eighth and sixteenth notes with accents (^) and slurs. The system ends with a double bar line.

Handwritten musical score for the second system. It consists of two staves: a treble clef staff and a bass clef staff. The treble staff contains rests in the first three measures. The bass staff contains chords in the first measure, followed by a melodic line in the second and third measures. The system ends with a double bar line.

Handwritten musical score for the third system. It consists of two staves: a treble clef staff and a bass clef staff. The treble staff contains rests in the first three measures. The bass staff contains chords in the first measure, followed by a melodic line in the second and third measures. The system ends with a double bar line.

Handwritten musical score for the first system. The treble clef part has a key signature of one sharp (F#) and a piano (p) dynamic marking. The melody consists of quarter notes with slurs. The bass clef part includes a bass line with a wavy line above it and a piano (p) dynamic marking.

Handwritten musical score for the second system. The treble clef part has a key signature of one sharp (F#) and a fortissimo (ff) dynamic marking. The melody consists of quarter notes with slurs. The bass clef part includes a bass line with a wavy line above it and a fortissimo (ff) dynamic marking.

Handwritten musical score for the third system. The treble clef part has a key signature of one sharp (F#) and a fortissimo (f) dynamic marking. The melody consists of quarter notes with slurs and a wavy line above it. The bass clef part includes a bass line with a wavy line above it and a fortissimo (f) dynamic marking.

The image shows a handwritten musical score for flute and piano, organized into four systems. Each system consists of a flute staff (top) and a piano staff (bottom). The notation is as follows:

- System 1:** The flute staff begins with a quarter rest, followed by a series of notes with accents and slurs. The piano staff starts with a dynamic marking of *f* and contains chords with accents and slurs, followed by rests.
- System 2:** The flute staff continues with notes and slurs. The piano staff has a dynamic marking of *ff* and contains chords with accents and slurs, followed by rests.
- System 3:** The flute staff continues with notes and slurs. The piano staff contains chords with accents and slurs, followed by rests.
- System 4:** The flute staff begins with a quarter rest, followed by a series of notes with accents and slurs. The piano staff contains chords with accents and slurs, followed by rests.

Handwritten musical score for the first system. The treble clef staff contains a series of chords and melodic fragments, with a key signature of one sharp (F#) and a common time signature (C). The bass clef staff has a few notes in the first measure, followed by rests.

Handwritten musical score for the second system. The treble clef staff features a triplet of eighth notes in the first measure, followed by a quarter rest and three measures of whole rests. The bass clef staff has two notes in the first measure, followed by rests.

Handwritten musical score for the third system. The treble clef staff contains complex chords and melodic lines, with a key signature of one sharp (F#) and a common time signature (C). The bass clef staff has notes in the first measure, followed by rests.

Handwritten musical score for the fourth system. The treble clef staff contains complex chords and melodic lines, with a key signature of one sharp (F#) and a common time signature (C). The bass clef staff has notes in the first measure, followed by rests. Dynamics markings 'p' and 'ff' are present.

Handwritten musical score for the first system. The top staff is in treble clef and contains a melodic line with a long slur over four measures, including accents and a forte (*f*) dynamic marking. The bottom staff is a grand staff (treble and bass clefs) with piano accompaniment, showing chords in the first two measures and a sixteenth-note run in the third measure.

Handwritten musical score for the second system. The top staff continues the melodic line with a slur and a fortissimo (*ff*) dynamic marking. The bottom staff continues the piano accompaniment with chords and a sixteenth-note run.

Handwritten musical score for the third system. The top staff is mostly empty with rests. The bottom staff continues the piano accompaniment with chords and a wavy line indicating a tremolo or sustained note.

Handwritten musical score for the first system. The top staff is for the flute, and the bottom staff is for the piano. The flute part begins with a dynamic marking of f and includes several slurs and accents. The piano part starts with a circled f and features a series of notes with flats in the first measure, followed by rests in the subsequent measures.

Handwritten musical score for the second system. The flute part includes a triplet of notes in the first measure, followed by rests and then a series of notes with slurs and accents. A circled ff dynamic marking is present. The piano part continues with notes and rests, including a circled ff dynamic marking.

Handwritten musical score for the third system. The flute part features a circled f dynamic marking and includes slurs and accents. The piano part continues with notes and rests, including a circled f dynamic marking.

Handwritten musical score for the first system. The treble clef staff contains a complex melodic line with a triplet of eighth notes, slurs, and accents. The piano accompaniment in the bass clef staff consists of a few notes in the first measure followed by rests. Dynamics include *ff* and *f*.

Handwritten musical score for the second system. The treble clef staff features a melodic line with slurs and accents. The piano accompaniment in the bass clef staff includes a circled *p* dynamic marking and some notes. Dynamics include *f*.

Handwritten musical score for the third system. The treble clef staff contains a melodic line with slurs and accents. The piano accompaniment in the bass clef staff includes a circled *p* dynamic marking and some notes. Dynamics include *ff*.

Prestissimo

Handwritten musical score for the first system. It consists of three staves: a treble clef staff at the top, and two bass clef staves below it. The treble staff contains three measures of music, each starting with a sharp sign (#) and a fermata. The second and third measures have a slur over them. The fourth measure contains a complex chord with notes marked with flats and sharps, and a fermata. The bass staves contain notes with various accidentals and slurs, including a sharp sign in the first measure and a flat sign in the second measure.

Handwritten musical score for the second system. It consists of three staves. The treble staff has a complex chord with flats and sharps in the first measure, followed by a fermata. The second measure has a sharp sign and a fermata. The bass staves contain notes with various accidentals and slurs, including a sharp sign in the first measure and a flat sign in the second measure.

Handwritten musical score for the third system. It consists of three staves. The treble staff has notes with various accidentals and slurs. The bass staves contain notes with various accidentals and slurs, including a sharp sign in the first measure and a flat sign in the second measure.

4 Teile für Flöte + Klavier
(1967) - 1980 (kann auch von Harfe begleitet werden!)

(mit Verwendung spanischer Volksweisen)

Adolf Scherbaum

Zwölftonreihe



Teil ①

ruhig (frei)

frei festhalten!

Cxit - dui

quasi ad libitum

pp

f = ff >

p

ff

p

Lento

pp

f >

pp

pp

p

Teil 2 No. ②

frei

Handwritten musical score for the first system. The top staff is in treble clef with a key signature of one sharp (F#). It contains three measures of music with notes, rests, and dynamic markings (p, f). The bottom two staves are in bass clef and contain long, sweeping lines representing a piano accompaniment. A circled 'p' is written in the first measure of the piano part.

Handwritten musical score for the second system. The top staff continues the melody with notes and dynamic markings (f, p). The piano accompaniment in the bottom two staves consists of long, sweeping lines. A circled 'f' is written in the first measure of the piano part.

breit

Handwritten musical score for the third system. The top staff features a wide interval with notes and dynamic markings (ff). The piano accompaniment in the bottom two staves consists of long, sweeping lines. A circled 'ff' is written in the first measure of the piano part.

Handwritten musical score for the first system. The top staff is in treble clef with a sharp key signature. It contains a melodic line with slurs and accents. The bottom two staves are in grand staff with a key signature of two flats. They contain chordal accompaniment with fingerings like (11) and (11). There are dynamic markings like p and pp .

Handwritten musical score for the second system. The top staff is in treble clef and contains rests. The bottom two staves are in grand staff with a key signature of two flats. They contain chordal accompaniment with dynamic markings like p , f , and ff .

Handwritten musical score for the third system. The top staff is in treble clef with a key signature of two flats. It contains a melodic line with slurs and accents. The bottom two staves are in grand staff with a key signature of two flats. They contain chordal accompaniment. The system ends with the text "D.C. al Fine".

Teil ③

lento | *rit*

3

p

rit

frei

pp

ff

frei

pp

ff

pp

VIVACE (con fuoco)

Handwritten musical score for the first system. The treble clef part begins with a 3-measure rest, followed by a piano (p) dynamic marking and a series of notes with accents and slurs. The grand staff below shows the piano accompaniment with chords and a bass line.

Handwritten musical score for the second system. The treble clef part starts with a forte (f) dynamic marking and continues with notes and chords, including a trill-like figure. The grand staff shows the piano accompaniment with chords and a bass line.

Handwritten musical score for the third system. The treble clef part features a forte (f) dynamic marking and complex rhythmic patterns with many notes. The grand staff shows the piano accompaniment with chords and a bass line.

Handwritten musical score for the first system. The top staff is for the flute, and the bottom staff is for the piano. The piano part begins with a sharp sign and a dynamic marking of *ff*. The flute part features several chords with accents and a final chord with a circled *p* marking.

Handwritten musical score for the second system. The flute part contains complex rhythmic patterns with accents and a circled *f* marking. The piano part includes a circled *p* marking and a circled *f* marking. The system concludes with a circled *p* marking in the piano part.

Handwritten musical score for the third system. The piano part starts with a dynamic marking of *ff*. The flute part continues with complex rhythmic patterns and accents. The system ends with a circled *p* marking in the piano part.

(rit) tempo

Prestissimo

Handwritten musical score for the first system. It consists of three staves: Treble Clef (top), Alto Clef (middle), and Bass Clef (bottom). The Treble staff contains a melodic line with notes G4, A4, B4, C5, D5, E5, F5, G5, with dynamics *p* and *f*. The Alto staff contains a chordal accompaniment with notes G4, A4, B4, C5, D5, E5, F5, G5, with dynamics *p* and *f*. The Bass staff contains a bass line with notes G3, A3, B3, C4, D4, E4, F4, G4, with dynamics *p* and *f*. There are various articulations like accents and slurs throughout.

Handwritten musical score for the second system. It consists of three staves: Treble Clef (top), Alto Clef (middle), and Bass Clef (bottom). The Treble staff contains a melodic line with notes G4, A4, B4, C5, D5, E5, F5, G5, with dynamics *ff*. The Alto staff contains a chordal accompaniment with notes G4, A4, B4, C5, D5, E5, F5, G5, with dynamics *ff*. The Bass staff contains a bass line with notes G3, A3, B3, C4, D4, E4, F4, G4, with dynamics *ff*. There are various articulations like accents and slurs throughout.

Handwritten musical score for the third system. It consists of three staves: Treble Clef (top), Alto Clef (middle), and Bass Clef (bottom). The Treble staff contains a melodic line with notes G4, A4, B4, C5, D5, E5, F5, G5, with dynamics *ff* and *p*. The Alto staff contains a chordal accompaniment with notes G4, A4, B4, C5, D5, E5, F5, G5, with dynamics *ff*. The Bass staff contains a bass line with notes G3, A3, B3, C4, D4, E4, F4, G4, with dynamics *ff*. There are various articulations like accents and slurs throughout.

2.

Handwritten musical score for the first system, measures 1-5. The top staff (flute) contains sixteenth-note runs and chords. The middle staff (right hand piano) contains chords with accents and slurs. The bottom staff (left hand piano) contains a simple bass line.

Handwritten musical score for the second system, measures 6-10. The top staff (flute) continues with sixteenth-note runs. The middle staff (right hand piano) contains chords with accents and slurs. The bottom staff (left hand piano) contains a simple bass line.

Handwritten musical score for the third system, measures 11-15. The top staff (flute) contains chords with accents and slurs. The middle staff (right hand piano) contains chords with accents and slurs. The bottom staff (left hand piano) contains a simple bass line. The system ends with a double bar line and a wavy line.

Quel. →

als (Teil 4)

folgt moderats Teil ①

4 Teile für Flöte
und Klavier (oder Harfe)

(über Fragmente spanischer
Volkslieder)

1980

Adolf Scherker

ganz frei gestalten 1

frei

ruhig

Handwritten musical score for the first system, featuring a flute and piano accompaniment. The flute part has a melodic line with slurs and accents, and a dynamic marking 'p'. The piano part has a rhythmic accompaniment with a circled '4' and a sharp sign.

(rit) >

Handwritten musical score for the second system, featuring a flute and piano accompaniment. The flute part has a melodic line with slurs and accents, and a dynamic marking 'p'. The piano part has a rhythmic accompaniment with a circled '4' and a sharp sign.

Lento (frei)

Handwritten musical score for the third system, featuring a flute and piano accompaniment. The flute part has a melodic line with slurs and accents, and a dynamic marking 'pp'. The piano part has a rhythmic accompaniment with a circled '4' and a sharp sign.

(2)

frei) rubato

Handwritten musical score for the first system. The flute part (top staff) begins with a melodic line containing triplets and a final flourish. The piano accompaniment (bottom staff) features chords and arpeggiated figures.

Handwritten musical score for the second system, continuing the flute and piano parts from the first system.

breit

Handwritten musical score for the third system. The flute part (top staff) has a melodic line with a wide interval. The piano accompaniment (bottom staff) consists of chords and arpeggiated figures.

RUHIG (♩)

Lento

Handwritten musical score for a piece. The top staff is in treble clef with a key signature of one sharp (F#). The tempo is marked *triu* and *Largo*. The bottom two staves are in bass clef, with the left hand marked *pp* and *Pedale*. The right hand has a melodic line with slurs and accents, while the left hand plays a simple accompaniment of chords and single notes.

Allegro (Vivace) ^③

Handwritten musical score for a piece in 3/4 time, marked *Allegro (Vivace)*. The top staff is in treble clef with a key signature of one sharp (F#). The bottom two staves are in bass clef. The right hand has a melodic line with slurs and accents, while the left hand plays a simple accompaniment of chords and single notes. The tempo is marked *pp*.

Handwritten musical score for the first system. The top staff is in treble clef with a key signature of one sharp (F#) and a common time signature. It features a melodic line with slurs and accents, including a triplet of eighth notes. The bottom staff is in bass clef with a key signature of one sharp (F#) and a common time signature, showing a bass line with chords and rests.

Handwritten musical score for the second system. The top staff is in treble clef with a key signature of one sharp (F#) and a common time signature. It features a melodic line with slurs and accents, including a triplet of eighth notes. The bottom staff is in bass clef with a key signature of one sharp (F#) and a common time signature, showing a bass line with chords and rests.

Handwritten musical score for the third system. The top staff is in treble clef with a key signature of one sharp (F#) and a common time signature. It features a melodic line with slurs and accents, including a triplet of eighth notes. The bottom staff is in bass clef with a key signature of one sharp (F#) and a common time signature, showing a bass line with chords and rests.

Handwritten musical score for the first system. The top staff is for the flute, starting with a dynamic marking of f . It contains a series of notes with accidentals (flats and naturals) and a slur. The bottom staff is for the piano, starting with a dynamic marking of ff . It features chords with accidentals and a series of notes with stems pointing downwards.

Handwritten musical score for the second system. The top staff is for the flute, starting with a dynamic marking of f and the word "stacc." below it. It contains notes with stems pointing upwards and various accidentals. The bottom staff is for the piano, starting with a dynamic marking of f . It features chords with accidentals and notes with stems pointing downwards.

Handwritten musical score for the third system. The top staff is for the flute, starting with a dynamic marking of ff . It contains a long, wavy line representing a sustained note or tremolo. The bottom staff is for the piano, starting with a dynamic marking of f . It features chords with accidentals and notes with stems pointing downwards. A circled ff marking is present at the end of the system.

Handwritten musical score for the first system. The treble clef staff contains a sequence of notes with various accidentals: a series of notes with sharps (#) and flats (b), followed by notes with double flats (bb). A dynamic marking of *fff* is present. A circled *f* is written below the staff. A slur is drawn over the final two notes of the treble staff. The grand staff below has rests in both the right and left hands.

Handwritten musical score for the second system. The treble clef staff features a wavy line with a downward-pointing arrow and a flat symbol (b) above it. Below the wavy line, four notes are marked with *f'*. The grand staff below contains notes in both hands, with accents (^) placed above several notes in the right hand.

Handwritten musical score for the third system. The treble clef staff contains notes with sharps and flats, and a circled *#* is written below the staff. The word "Flanker 3." is written below the first measure. A dynamic marking of *mf* is present. The grand staff below has notes in both hands, with the word "din" written below the right hand. A circled *p* is written below the final measure of the grand staff.

moder accel.

tempo

4

sehr frei / langsam) rubato

Lento

Handwritten musical score for the first system. It features a treble clef staff with a 6/4 time signature and a piano (pp) dynamic marking. The melody is written in a single line with various notes and rests. The bass staff contains a simple accompaniment of eighth notes. A circled 'p' dynamic marking is present in the second measure of the treble staff.

Handwritten musical score for the second system. It continues the melody from the first system. The treble staff shows more complex rhythmic patterns and dynamics like 'w' and 'p'. The bass staff continues with eighth notes and includes some accidentals (sharps).

Handwritten musical score for the first system. The top staff is in treble clef, showing a melodic line with notes, rests, and slurs. The bottom two staves are in grand staff (piano and bass), with notes and rests. Dynamic markings include 'f' and 'p'.

Handwritten musical score for the second system. The notation continues from the first system, with similar melodic and accompaniment parts. A 'p' marking is visible in the piano part.

Handwritten musical score for the third system. It includes performance directions: '(frei)' at the beginning and '(rit)' later in the system. The notation shows a change in tempo and dynamics.

ganz frei *rubato*

breit (*ganz frei*)

(*frei*)

sehr ruhig / langsam

Handwritten musical score for the first system. It consists of three staves: a treble clef staff, a grand staff (treble and bass clefs), and a pedal staff. The treble staff contains a melodic line with notes G4, A4, B4, C5, D5, E5, F5, G5, and a fermata. The grand staff shows a complex accompaniment with various chords and intervals. A circled '4' with a 'p' is written in the left hand. The pedal staff is marked 'Pedal' and contains a series of notes and rests.

(rit)

Handwritten musical score for the second system, continuing from the first. It features the same three-staff layout. The melodic line in the treble staff continues with notes and rests, including a fermata. The accompaniment in the grand staff and the pedal staff continues with similar rhythmic and harmonic patterns.

Handwritten musical score for the third system, concluding the piece. The treble staff ends with a fermata and a final note. The grand staff and pedal staff conclude with sustained chords and notes. The word 'lunga' is written in the right hand, and 'ppp' is written in the left hand. The pedal staff is marked 'Pedal'.

ausklingen lassen