

Teile für Flöte und  
Klavier)

(nach Motiven  
spanischer Volkslieder)

~~1979 - 1981~~

Arbeitsentwurf



Tanz aus Salamanka

1

Allegro

*f*

2

(pr. out)

pesante

ff

Tanto

ff

ff

(out) (pr)

f

ff

(Tempo 1.)

accel.

zürück

accel. →

*meno*

*rit*

*f*

(3+)

*Allegro* — *Accel.* →

*Presto*

② La flor de la Canela

Langsam schreitend

Handwritten musical score for the first system. The piece is in 6/8 time, marked "Langsam schreitend". The first measure contains a whole note chord in the right hand and a half note chord in the left hand, with a circled "p" (piano) dynamic marking. The second measure is a whole rest in the right hand and a half note chord in the left hand. The third measure features a melodic line in the right hand starting with a grace note and a triplet, and a half note chord in the left hand. The key signature has one flat (B-flat).

Handwritten musical score for the second system. The right hand continues the melodic line with a triplet and a slur. The left hand plays a half note chord. The key signature has one flat (B-flat).

Handwritten musical score for the third system. The right hand features a melodic line with a slur and a triplet. The left hand plays a half note chord. The key signature changes to two sharps (D major).

Handwritten musical score, first system. The top staff is in treble clef with a key signature of one flat (B-flat). The tempo marking "rit" is written above the staff, and "Cassa" is written above the second measure. The music features a melodic line with slurs and accents, and a bass line with a circled "p" dynamic marking. A fermata is placed over the final note of the first staff.

Handwritten musical score, second system. The top staff is in treble clef with a key signature of one flat. The tempo marking "animato" is written above the staff. The music includes slurs, accents, and a circled "rit" marking at the beginning. The bass line features a circled "p" dynamic marking and a fermata over the final note.

Handwritten musical score, third system. The top staff is in treble clef with a key signature of one flat. The tempo marking "rit" is written above the staff. The music includes slurs, accents, and a circled "p" dynamic marking. The bass line features a circled "p" dynamic marking and a fermata over the final note.

③

# Malaguena

Allegretto

(3+)

ente + Allegretto  
2. + Allegro (3. + Presto)

Handwritten musical notation for the first system. It consists of two staves. The upper staff is in treble clef with a key signature of one flat (B-flat) and a 3/4 time signature. The lower staff is in bass clef with a key signature of one flat. The music begins with a circled 'P' (piano) dynamic marking. The first two measures feature a melody in the upper staff with accents (^) over the notes. The third measure shows a change in dynamics to 'f' (forte) in both staves, with a fermata over the final note of the upper staff.

Handwritten musical notation for the second system, continuing from the first. It consists of two staves. The upper staff continues the melody with accents (^) and a fermata over the final note. The lower staff provides a bass line with a circled 'f' (forte) dynamic marking. The system concludes with a fermata over the final note of the upper staff.

Handwritten musical notation for the third system, continuing from the second. It consists of two staves. The upper staff begins with a circled 'f' (forte) dynamic marking and features a melody with accents (^). The lower staff has a circled 'f' and includes a circled '8' below it. The system ends with a fermata over the final note of the upper staff.



Handwritten musical notation for the first system. The top staff is a treble clef with a piano part. The first measure contains a series of notes with a forte (**ff**) dynamic and a slur above it. The second, third, and fourth measures contain rests with accents (^) above them. The bottom staff is a bass clef with notes in the first measure and rests with accents (^) above them in the subsequent measures.

Handwritten musical notation for the second system. The top staff is a treble clef with a piano part. The first measure has a forte (**ff**) dynamic and a slur above it. The second measure has a slur above it. The third measure has a slur above it. The fourth measure has a slur above it. The fifth measure has a slur above it. The sixth measure has a slur above it. The seventh measure has a slur above it. The eighth measure has a slur above it. The bottom staff is a bass clef with notes in the first measure and rests with slurs above them in the subsequent measures. A circled '5' is written in the first measure of the bass staff.

Handwritten musical notation for the third system. The top staff is a treble clef with a piano part. The first measure has a forte (**ff**) dynamic and a slur above it. The second measure has a slur above it. The third measure has a slur above it. The fourth measure has a slur above it. The fifth measure has a slur above it. The sixth measure has a slur above it. The seventh measure has a slur above it. The eighth measure has a slur above it. The bottom staff is a bass clef with notes in the first measure and rests with slurs above them in the subsequent measures. A circled '5' is written in the first measure of the bass staff.

Handwritten musical score for the first system. The treble clef staff contains a melody with a key signature of two sharps (F# and C#) and a common time signature. The melody features slurs, accents, and a trill. The piano accompaniment consists of chords in the right hand and a bass line in the left hand.

Handwritten musical score for the second system. The treble clef staff contains a melody with a key signature of two sharps (F# and C#) and a common time signature. The melody features slurs and accents. The piano accompaniment includes chords and a bass line.

Handwritten musical score for the third system. The treble clef staff contains a melody with a key signature of two sharps (F# and C#) and a common time signature. The melody features slurs and accents. The piano accompaniment includes chords and a bass line.

Handwritten musical score for the first system. The treble clef staff contains a melody in G major (one sharp) and common time. The melody features eighth and sixteenth notes with various ornaments and slurs. The bass clef staff shows a simple accompaniment with quarter notes and rests.

Handwritten musical score for the second system. The treble clef staff has a more active melody with slurs and ornaments. The bass clef staff includes a circled 'P' dynamic marking and rests.

*Prezissimo* *Tempo*

Handwritten musical score for the third system, marked *Prezissimo* and *Tempo*. The treble clef staff features a dense, rapid sixteenth-note passage. The bass clef staff has rests and arrows indicating the continuation of the piece.

*lais*  
*rubato*

Handwritten musical score for the first system. The top staff is a treble clef staff with a wavy line. Below it are three staves: a treble clef staff with a sharp sign, a piano staff with notes and a circled sharp sign, and a bass staff with notes and a circled sharp sign. The system concludes with a double bar line and a fermata-like symbol.

No. 4 (Tirana)

Handwritten musical score for the second system, starting with the tempo marking "(♩) Appassionata". The system consists of four measures. The top staff has notes with accents and a circled plus sign. The piano staff has notes and a circled plus sign. The bass staff has notes and a circled plus sign. The system concludes with a double bar line and a fermata-like symbol.

Handwritten musical score for the first system. The treble clef staff contains a melodic line with a slur over the first two measures and a fermata in the third. The piano part consists of a grand staff with a circled 'p' in the third measure.

Handwritten musical score for the second system. The treble clef staff contains a melodic line with a slur over the first two measures and a fermata in the third. The piano part consists of a grand staff with a circled 'p' in the third measure.

Handwritten musical score for the third system, ending with a CODA. The treble clef staff has a slur over the first two measures and a fermata in the third. The piano part has a circled 'p' in the first measure. The system concludes with a double bar line and a CODA symbol.

etwas garbier

Handwritten musical score for the first system. The top staff is in treble clef and the bottom staff is in bass clef. The key signature has one flat (B-flat). The first measure of the top staff has a circled 'p' and a slur over a group of notes. The second measure has a circled 'f' and a slur. The third measure has a circled 'f' and a slur. The fourth measure has a circled 'f' and a slur. There are also some handwritten annotations like 'b' and 'm' above notes.

Handwritten musical score for the second system. The top staff is in treble clef and the bottom staff is in bass clef. The key signature has one flat. The first measure of the top staff has a circled 'p' and the word 'accents' written in the staff. The second measure has a circled 'p' and the word 'accents' written in the staff. The third measure has a circled 'p' and the word 'accents' written in the staff. The fourth measure has a circled 'p' and the word 'accents' written in the staff. There are also some handwritten annotations like 'b' and 'm' above notes.

supra strachin

Handwritten musical score for the third system. The top staff is in treble clef and the bottom staff is in bass clef. The key signature has one flat. The first measure of the top staff has a circled 'ff' and a slur over a group of notes. The second measure has a circled 'ff' and a slur. The third measure has a circled 'ff' and a slur. The fourth measure has a circled 'ff' and a slur. There are also some handwritten annotations like 'b' and 'm' above notes.

*(poco rit)* *zurück*

Handwritten musical score for the first system. The treble clef staff contains notes with various accidentals (sharps, flats, naturals) and slurs. There are dynamic markings like *p* and *pp*, and performance instructions like *(poco rit)* and *zurück*. The two bass clef staves are empty.

*(frei)* *(rit. dann)*

Handwritten musical score for the second system. The treble clef staff contains notes with various accidentals and slurs. There are dynamic markings like *p* and *pp*, and performance instructions like *(frei)* and *(rit. dann)*. The two bass clef staves contain notes and rests.

Flöte (frei)

Handwritten musical score for the third system. The treble clef staff contains notes with various accidentals and slurs. There are dynamic markings like *pp* and *pp*, and performance instructions like *Flöte (frei)*. The two bass clef staves are empty.

*ad libitum: kein D.C. sondern weiter)*

*15*

*CODA*

♩ COVA  
Tempo 1.)

Handwritten musical notation for the first system. The top staff is in treble clef and contains several chords with slurs and accents. The bottom staff is in bass clef and contains a melodic line starting with a circled 'p' and a 'pp' dynamic marking. The system consists of four measures.

Handwritten musical notation for the second system. The top staff continues with chords and slurs. The bottom staff continues the melodic line with a 'pp' dynamic marking. The system consists of four measures.

Handwritten musical notation for the third system. The top staff continues with chords and slurs. The bottom staff continues the melodic line with various symbols, including a circled 'ff' and a circled 'p'. The system consists of four measures.



(rit)

Handwritten musical score for the first system. The top staff is a treble clef with a melodic line. The bottom two staves are a grand staff (piano). The treble staff has a circled **ff** dynamic marking. The piano part has a circled **ff** and a circled **#**. The system concludes with a circled **#**. The tempo marking **(rit)** is written above the staff.

ritardando

(rit)

Handwritten musical score for the second system. The top staff is a treble clef with a melodic line. The bottom two staves are a grand staff (piano). The treble staff has a circled **p** dynamic marking. The piano part has a circled **p** and a circled **b**. The system concludes with a circled **p**. The tempo marking **(rit)** is written above the staff.

(rit)

Cento

Handwritten musical score for the third system. The top staff is a treble clef with a melodic line. The bottom two staves are a grand staff (piano). The treble staff has a circled **p** dynamic marking. The piano part has a circled **p**. The system concludes with a circled **p**. The tempo marking **(rit)** is written above the staff.

5 Bolero

Allegro

Handwritten musical score for the first system. It features a grand staff with treble and bass clefs. The time signature is 3/4. The key signature has one sharp (F#). The first measure contains a circled '4' with an equals sign and an accent (^) above it. The second measure has a circled 'p' with an equals sign and an accent (^) above it. The third measure has a circled 'f' with an equals sign and an accent (^) above it. The notation includes various notes, rests, and dynamic markings.

Handwritten musical score for the second system. It features a grand staff with treble and bass clefs. The time signature is 3/4. The key signature has one sharp (F#). The first measure contains a circled 'p' with an equals sign and an accent (^) above it. The second measure has a circled 'p' with an equals sign and an accent (^) above it. The third measure has a circled 'p' with an equals sign and an accent (^) above it. The fourth measure has a circled 'p' with an equals sign and an accent (^) above it. The notation includes various notes, rests, and dynamic markings.

Handwritten musical score for the third system. It features a grand staff with treble and bass clefs. The time signature is 3/4. The key signature has one sharp (F#). The first measure contains a circled 'p' with an equals sign and an accent (^) above it. The second measure has a circled 'p' with an equals sign and an accent (^) above it. The third measure has a circled 'p' with an equals sign and an accent (^) above it. The fourth measure has a circled 'p' with an equals sign and an accent (^) above it. The notation includes various notes, rests, and dynamic markings.

Handwritten musical score for the first system. The treble clef staff contains a melodic line with notes, rests, and dynamic markings such as  $p=$ . The bass clef staff contains a bass line with notes and rests. The system is divided into four measures.

Handwritten musical score for the second system. The treble clef staff features a melodic line with notes, rests, and dynamic markings like  $p=$  and  $f=$ . The bass clef staff contains a bass line with notes and rests. The system is divided into four measures.

Handwritten musical score for the third system. The treble clef staff contains a melodic line with notes, rests, and dynamic markings such as  $ff$ . The bass clef staff contains a bass line with notes and rests. The system is divided into four measures.

Handwritten musical score for the first system. The treble clef staff contains a series of notes with slurs and accents, including dynamic markings  $f$  and  $p$ . The bass clef staff shows a sequence of chords and notes, with a  $f$  marking at the beginning.

Handwritten musical score for the second system. The treble clef staff features a prominent slur over a group of notes, with an accent mark above it. The bass clef staff continues with chordal accompaniment.

Handwritten musical score for the third system. The treble clef staff shows notes with slurs and accents, ending with a  $f$  marking. The bass clef staff concludes with a few notes and a  $f$  marking.

Handwritten musical score for the first system. The top staff (treble clef) contains dense chordal textures with slurs and accents. The bottom staff (bass clef) features a melodic line with slurs and accents. Dynamics include  $f$  and  $p$ . A circled  $p$  is present in the second measure of the top staff.

Handwritten musical score for the second system. The top staff (treble clef) continues with dense chordal textures. The bottom staff (bass clef) has a melodic line. Dynamics include  $f$ . A double bar line is present in the second measure of the top staff.

Handwritten musical score for the third system, labeled "Piano". The top staff (treble clef) contains dense chordal textures. The bottom staff (bass clef) features a melodic line with slurs. Dynamics include  $f$ . The system ends with a double bar line.

# ⑥ Portugiesisches Lied.

languetto (ruhig)

Handwritten musical notation for the first system. The top staff is in treble clef with a key signature of one sharp (F#) and a common time signature (C). It begins with a whole rest, followed by a half note G4, a quarter note A4, a quarter note B4, a quarter note C5, and a quarter note D5, all under a slur. A circled 'p' is placed above the first measure. The bottom staff is in bass clef with a common time signature (C). It starts with a whole rest, followed by a half note G2, a quarter note A2, and a quarter note B2. Above the notes are two chords: a triad of G4, A4, B4 and another triad of G4, A4, B4. A circled 'p' is placed above the first measure.

Handwritten musical notation for the second system. The top staff is in treble clef with a key signature of one sharp (F#) and a common time signature (C). It begins with a half note G4, a quarter note A4, a quarter note B4, a quarter note C5, and a quarter note D5, all under a slur. A circled 'p' is placed above the first measure. The bottom staff is in bass clef with a common time signature (C). It starts with a half note G2, a quarter note A2, and a quarter note B2. Above the notes are two chords: a triad of G4, A4, B4 and another triad of G4, A4, B4. A circled 'p' is placed above the first measure.

Handwritten musical notation for the third system. The top staff is in treble clef with a key signature of one sharp (F#) and a common time signature (C). It begins with a half note G4, a quarter note A4, a quarter note B4, a quarter note C5, and a quarter note D5, all under a slur. A circled 'f' is placed above the first measure. The bottom staff is in bass clef with a common time signature (C). It starts with a half note G2, a quarter note A2, and a quarter note B2. Above the notes are two chords: a triad of G4, A4, B4 and another triad of G4, A4, B4. A circled 'f' is placed above the first measure.

*rit.*

Tempo 1 *rit.*

*gr. rit.*

*Lunga*

Pedal

7

Polo -

*Allegro* *Finale*

(sda. bewegt) bewegt

Handwritten musical score for the first system. It consists of two staves: a piano staff (treble clef) and a bass staff (bass clef). The piano staff begins with a circled 'ff' dynamic marking. The music is in 3/4 time, as indicated by the '3' above the first measure. The first system contains four measures. The piano part features eighth and sixteenth notes with accents (^) and slurs. The bass part consists of chords and single notes, also with accents (^) and slurs.

Handwritten musical score for the second system. It consists of two staves: a piano staff (treble clef) and a bass staff (bass clef). The piano staff contains three measures of chords, with the first measure having a flat sign (b) and the second and third measures having a sharp sign (#). The bass staff contains three measures of chords and single notes, with a flat sign (b) in the first measure and a sharp sign (#) in the second measure.

Handwritten musical score for the third system. It consists of two staves: a piano staff (treble clef) and a bass staff (bass clef). The piano staff contains three measures of chords, with a sharp sign (#) in the first measure and a flat sign (b) in the second measure. The bass staff contains three measures of chords and single notes, with a sharp sign (#) in the first measure and a flat sign (b) in the second measure. The system ends with a double bar line.



Handwritten musical score for the first system. The top staff is in treble clef and contains a wavy line above the staff, with notes below it. The bottom staff is in bass clef and contains a circled 'P' at the beginning, followed by notes and a dynamic marking 'p'.

Handwritten musical score for the second system. The top staff is in treble clef and contains a circled 'ff' at the beginning, followed by notes. The bottom staff is in bass clef and contains notes and a dynamic marking 'p'.

Handwritten musical score for the third system. The top staff is in treble clef and contains a circled 'p' at the beginning, followed by notes and a dynamic marking 'p'. The bottom staff is in bass clef and contains notes and a dynamic marking 'p'.

Handwritten musical score, first system. The top staff contains a melodic line with various ornaments and slurs. The bottom staff contains a piano accompaniment with chords and rhythmic markings. A dynamic marking **fc** is present in the first measure of the piano part.

Handwritten musical score, second system. The top staff continues the melodic line. The bottom staff continues the piano accompaniment. A dynamic marking **ff** is circled in the first measure of the piano part.

Handwritten musical score, third system. The top staff continues the melodic line. The bottom staff continues the piano accompaniment with various chordal textures.

Handwritten musical score, fourth system. The top staff continues the melodic line. The bottom staff continues the piano accompaniment. A circled **ff** dynamic marking is present in the first measure of the piano part.

Handwritten musical notation for the first system. The right hand features a complex melodic line with many beamed notes and slurs, while the left hand has a simple bass line with a few notes and rests.

Handwritten musical notation for the second system. The right hand has a triplet of beamed notes in the first measure, followed by rests. The left hand continues with a simple bass line.

Handwritten musical notation for the third system. The right hand has a melodic line with slurs and a triplet. The left hand has a bass line with some notes and rests.

Handwritten musical notation for the fourth system. The right hand has a complex melodic line with many beamed notes and slurs. The left hand has a bass line with notes and rests, including dynamic markings 'p' and 'ff'.

Handwritten musical score for the first system. The top staff is in treble clef and contains several notes with accents (^) and a slur. The middle staff is in bass clef and contains rests and notes with accents (^) and dynamic markings like 'p'. The bottom staff is in bass clef and contains notes with a flat (b) and a circled 'p'.

Handwritten musical score for the second system. The top staff is in treble clef and contains complex rhythmic patterns with accents (^) and a slur. The middle staff is in bass clef and contains notes with a flat (b) and a circled 'p'. The bottom staff is in bass clef and contains notes with a flat (b) and a circled 'p'.

Handwritten musical score for the third system. The top staff is in treble clef and contains notes with accents (^) and dynamic markings like 'f', 'pp', and 'p'. The middle staff is in bass clef and contains notes with a flat (b) and a circled 'p'. The bottom staff is in bass clef and contains notes with a flat (b) and a circled 'p'.

Handwritten musical score for the first system. The treble staff contains a melodic line with eighth and sixteenth notes, including accents and slurs. The bass staff features a series of chords and a long horizontal line, possibly representing a sustained note or a specific fingering. Dynamic markings include  $f$  and  $ff$ .

Handwritten musical score for the second system. The treble staff shows a melodic line with slurs and accents. The bass staff contains chords and a long horizontal line. Dynamic markings include  $f$  and  $ff$ . There are also some handwritten annotations like  $b$  and  $\#$ .

Handwritten musical score for the third system. The treble staff has a melodic line with a slur. The bass staff contains chords and a wavy line, possibly representing a tremolo or a specific effect. Dynamic markings include  $f$  and  $ff$ .

Handwritten musical notation for the first system. The top staff is in treble clef and contains a melodic line with several notes, some marked with accents (^) and slurs. The bottom staff is in bass clef and contains a bass line with notes and rests. There are some handwritten annotations like 'y' and 'f'.

Handwritten musical notation for the second system. The top staff continues the melodic line with a triplet of notes marked with a '3' and accents (^). The bottom staff continues the bass line. A circled 'ff' (fortissimo) marking is present in the bass staff. There are also some handwritten annotations like 'y' and 'f'.

Handwritten musical notation for the third system. The top staff continues the melodic line with notes and rests. The bottom staff continues the bass line. There are some handwritten annotations like 'y' and 'f'.

Handwritten musical score system 1. The system consists of two staves. The upper staff is in treble clef and contains a melodic line with various ornaments, including slurs, accents, and a fermata. The lower staff is in bass clef and contains a bass line with chords and some melodic fragments. There are several accidentals (sharps) and dynamic markings throughout the system.

Handwritten musical score system 2. The system consists of two staves. The upper staff is in treble clef and features a complex melodic line with many slurs and accents. The lower staff is in bass clef and contains a bass line with chords and some melodic fragments. There are several accidentals (sharps) and dynamic markings throughout the system.

Handwritten musical score system 3. The system consists of two staves. The upper staff is in treble clef and contains a melodic line with slurs and accents. The lower staff is in bass clef and contains a bass line with chords and some melodic fragments. There are several accidentals (sharps) and dynamic markings throughout the system.

Finis

Handwritten musical notation for the first system. It consists of three staves. The top staff is a treble clef with notes and accidentals. The middle and bottom staves are bass clefs with notes and accidentals. There are several accidentals, including sharps and flats, and some notes are marked with accents (^).

Handwritten musical notation for the second system. It consists of three staves. The top staff is a treble clef with notes and accidentals. The middle and bottom staves are bass clefs with notes and accidentals. There are several accidentals, including sharps and flats, and some notes are marked with accents (^).

Handwritten musical notation for the third system. It consists of three staves. The top staff is a treble clef with notes and accidentals. The middle and bottom staves are bass clefs with notes and accidentals. There are several accidentals, including sharps and flats, and some notes are marked with accents (^). At the bottom center, there is a circled 'F'.



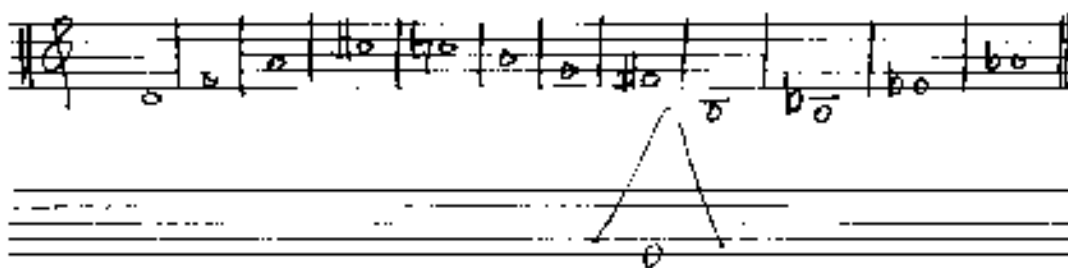
4 Teile für Flöte + Klavier

(1967) - 1980  
(kann auch von Harfe begleitet werden!)

(mit Verwendung spanischer Volksweisen)

Adolf Scherhan

Zwölftonreihe



Teil ①

ruhig (frei)

frei gestalten

Handwritten musical score for the first system. It features a treble clef staff with a melodic line starting with a fermata, followed by notes with dynamic markings p, f, p, pp. The piano accompaniment is in 3/4 time, indicated by a circled '3' over a '4' with a circled 'p'. The piano part consists of chords in the right hand and bass notes in the left hand.

Handwritten musical score for the second system. The treble clef staff contains a melodic line with a fermata, followed by notes with dynamic markings p and f. The piano accompaniment consists of chords in the right hand and bass notes in the left hand.

Handwritten musical score for the third system. The treble clef staff has a melodic line with a fermata, followed by a section labeled "rubbato" with a slur over a series of notes, and then a section labeled "Cresc." with a slur over notes. The piano accompaniment consists of chords in the right hand and bass notes in the left hand.

Crist - duo

guitar free

Handwritten musical score for guitar and piano. The guitar part features a melodic line with slurs and accents, starting with a dynamic of *p* and moving to *f*. The piano accompaniment consists of sustained chords in the left hand and a single note in the right hand.

Handwritten musical score for guitar and piano. The guitar part continues with a melodic line, including a circled *ff* dynamic marking. The piano accompaniment remains with sustained chords.

Lento

Handwritten musical score for guitar and piano. The guitar part is marked *Lento* and includes dynamics from *pp* to *f*. The piano accompaniment features a more active texture with chords and a circled *pp* dynamic marking.

# Teil 2 No. 2

*frei*

Handwritten musical score for the first system. The top staff is a treble clef with a melodic line. The bottom staff is a grand staff (treble and bass clefs) with a piano accompaniment. The piano part features a wide intervallic structure with a circled 'p' and 'allegro' markings.

Handwritten musical score for the second system. The top staff continues the melodic line. The piano accompaniment in the grand staff below shows a more complex harmonic structure with a circled 'f' and 'allegro' markings.

*breit*

Handwritten musical score for the third system. The top staff features a melodic line with a circled 'ff' and 'allegro' markings. The piano accompaniment in the grand staff below has a circled 'ff' and 'allegro' markings.

Handwritten musical score for the first system. The top staff is in treble clef, showing a melodic line with a slur over the first two measures and a fermata over the third. The bottom two staves are in grand staff, with piano accompaniment. Dynamic markings include *p* and *pp*. A circled *p* is present in the second measure of the top staff. The piece concludes with the word "FINIS" written vertically on the right side.

*lento*

Handwritten musical score for the second system, marked *lento*. It consists of piano accompaniment in grand staff. The music is primarily chordal, with dynamic markings of *p* and *ff*. A circled *p* is visible in the first measure.

*frei*

Handwritten musical score for the third system, marked *frei*. The top staff is in treble clef, showing a melodic line with slurs and accents. The bottom two staves are in grand staff, with piano accompaniment. Dynamic markings include *p* and *f*. The system ends with the instruction "ad lib" written as "D.C. al Fine".

37

Teil ③

(Canto) (rit)

Handwritten musical score for the first system. It consists of three staves: a vocal line (Canto) and two piano accompaniment staves. The vocal line begins with a rest, followed by a melodic phrase with a slur and a fermata. The piano accompaniment starts with a treble clef, a 3/4 time signature, and a circled 'p' (piano) dynamic marking. The piano part includes chords and moving lines, with a circled 'p' and a circled '3' (triplets) visible. The system concludes with a double bar line.

(Pian)

Handwritten musical score for the second system, featuring piano accompaniment. It consists of three staves. The system begins with a circled 'pp' (pianissimo) dynamic marking. The piano part is characterized by a wide intervallic structure, with a large slur spanning across the system. The music includes various accidentals and dynamic markings, including 'ff' (fortissimo) and 'pp'. The system ends with a double bar line.

Handwritten musical score for the third system, featuring piano accompaniment. It consists of three staves. The system begins with a circled 'pp' (pianissimo) dynamic marking. The piano part is characterized by a wide intervallic structure, with a large slur spanning across the system. The music includes various accidentals and dynamic markings, including 'ff' (fortissimo) and 'ppp' (pianississimo). The system ends with a double bar line.

VIVACE con fuoco

Handwritten musical notation for the first system. The treble clef is on the top staff, and the bass clef is on the bottom staff. The time signature is 3/8. The first measure has a whole rest in the treble and a quarter note in the bass. The second measure has a quarter note in the treble and a quarter note in the bass. The third measure has a quarter note in the treble and a quarter note in the bass. The fourth measure has a quarter note in the treble and a quarter note in the bass. The fifth measure has a quarter note in the treble and a quarter note in the bass. The sixth measure has a quarter note in the treble and a quarter note in the bass.

Handwritten musical notation for the second system. The treble clef is on the top staff, and the bass clef is on the bottom staff. The time signature is 3/8. The first measure has a quarter note in the treble and a quarter note in the bass. The second measure has a quarter note in the treble and a quarter note in the bass. The third measure has a quarter note in the treble and a quarter note in the bass. The fourth measure has a quarter note in the treble and a quarter note in the bass. The fifth measure has a quarter note in the treble and a quarter note in the bass. The sixth measure has a quarter note in the treble and a quarter note in the bass.

Handwritten musical notation for the third system. The treble clef is on the top staff, and the bass clef is on the bottom staff. The time signature is 3/8. The first measure has a quarter note in the treble and a quarter note in the bass. The second measure has a quarter note in the treble and a quarter note in the bass. The third measure has a quarter note in the treble and a quarter note in the bass. The fourth measure has a quarter note in the treble and a quarter note in the bass. The fifth measure has a quarter note in the treble and a quarter note in the bass. The sixth measure has a quarter note in the treble and a quarter note in the bass.

Handwritten musical score system 1. It consists of three staves. The top staff is in treble clef with a key signature of one sharp (F#). It contains several measures with complex chordal textures, including a prominent trill-like figure in the second measure. The middle staff is in alto clef and contains some notes and rests. The bottom staff is in bass clef with a key signature of one sharp (F#) and contains a few notes, including a circled 'p' in the final measure.

Handwritten musical score system 2. It consists of three staves. The top staff is in treble clef with a key signature of one sharp (F#). It features a melodic line with a slur and a fermata over the first two measures, followed by a series of chords. The middle staff is in alto clef and contains notes and rests. The bottom staff is in bass clef with a key signature of one sharp (F#) and contains notes, including a circled 'p' in the first measure.

Handwritten musical score system 3. It consists of three staves. The top staff is in treble clef with a key signature of one sharp (F#). It contains several measures with complex chordal textures, including a prominent trill-like figure in the second measure. The middle staff is in alto clef and contains notes and rests. The bottom staff is in bass clef with a key signature of one sharp (F#) and contains notes, including a circled 'p' in the first measure.



(rit) tempo

*Prestissimo*

Handwritten musical score for the first system. It consists of three staves: treble, alto, and bass. The treble staff contains a melodic line with notes, rests, and dynamic markings *p* and *f*. The alto and bass staves contain accompaniment with notes and rests. A large *f* dynamic marking is placed below the bass staff.

Handwritten musical score for the second system. It consists of three staves: treble, alto, and bass. The treble staff contains a melodic line with notes, rests, and dynamic markings *ff*. The alto and bass staves contain accompaniment with notes and rests. A circled *ff* dynamic marking is present in the bass staff.

Handwritten musical score for the third system. It consists of three staves: treble, alto, and bass. The treble staff contains a melodic line with notes, rests, and dynamic markings *ff* and *p*. The alto and bass staves contain accompaniment with notes and rests. A circled *p* dynamic marking is present in the bass staff.

2.

Handwritten musical notation for the first system, featuring a treble clef with a key signature of one sharp (F#) and a common time signature. The melody consists of several chords and a melodic line with an accent (^) and a slur. The bass line includes a double bar line and a fermata.

Handwritten musical notation for the second system, continuing the piece with similar chordal and melodic structures. The bass line features a double bar line and a fermata.

Handwritten musical notation for the third system, concluding the piece. It includes a "Risol." (Ritardando) marking with an arrow pointing to the right. The notation is more complex, with many slurs and accents.

als (Teil 4)

folgt moderats Teil ①

4 Teile für Flöte  
und Klavier (oder Harfe)

(über Fragmente spanischer  
Volkslieder)

1980

Adolf Schenker

ganz frei gestalten

(1)

Handwritten musical score for the first system. The top staff is in treble clef and contains a melodic line with notes, slurs, and dynamics such as  $f$ ,  $mf$ , and  $f$ . There are also markings like  $\hat{1}$ ,  $\hat{2}$ , and  $\hat{3}$  above the notes. The bottom two staves are a grand staff (piano accompaniment) with notes and slurs.

Handwritten musical score for the second system. The top staff continues the melodic line with notes, slurs, and dynamics. The bottom two staves continue the piano accompaniment with notes and slurs.

Handwritten musical score for the third system. The top staff concludes the melodic line with notes, slurs, and dynamics. The bottom two staves conclude the piano accompaniment with notes and slurs.

*vivac*

Handwritten musical score for the first system. It consists of a treble clef staff with a melody and a grand staff (piano and bass) accompaniment. The tempo is marked "vivac". The music includes slurs, accents, and dynamic markings like "p".

*(rit)*

Handwritten musical score for the second system. It continues the piece with a "rit" (ritardando) marking. It features a treble clef staff and a grand staff accompaniment with various musical notations.

*Lento (fin)*

Handwritten musical score for the third system, marked "Lento (fin)". It features a treble clef staff with a melodic line and a grand staff accompaniment. The music includes slurs, accents, and dynamic markings like "pp".

(2)

*f* *rit.* *rubato*

Handwritten musical score for the first system. The treble clef staff contains a melodic line starting with a quarter note, followed by a series of eighth notes grouped in triplets, and ending with a dense, rapid chromatic run. The piano accompaniment is written in a grand staff (treble and bass clefs) and consists of chords and arpeggiated figures.

Handwritten musical score for the second system. The treble clef staff continues the melodic line with triplets and a chromatic run. The piano accompaniment in the grand staff continues with chords and arpeggios.

Handwritten musical score for the third system. The treble clef staff begins with the word "breve" above it. The melodic line features a chromatic run and ends with a chord. The piano accompaniment in the grand staff consists of chords and arpeggios.



RUHIG (♩)

Handwritten musical score for the first system. The top staff is in treble clef with a 3/4 time signature and a dynamic marking of *p*. It contains several measures of music with notes, rests, and slurs. The middle staff is in bass clef and contains a circled *p* dynamic marking and notes. The bottom staff is in bass clef and contains a long, sweeping line with a slur and a dynamic marking of *p*.

Handwritten musical score for the second system. The top staff is in treble clef and contains notes with slurs and dynamic markings of *f* and *rit*. The middle staff is in bass clef and contains notes with slurs and dynamic markings of *f* and *rit*. The bottom staff is in bass clef and contains a long, sweeping line with a slur and a dynamic marking of *f*.

Lento

Handwritten musical score for the third system. The top staff is in treble clef and contains notes with slurs and dynamic markings of *pp* and *f*. The middle staff is in bass clef and contains notes with slurs and dynamic markings of *pp* and *f*. The bottom staff is in bass clef and contains notes with slurs and dynamic markings of *pp* and *f*. The system concludes with a double bar line and the marking *G.P.*

Handwritten musical score for a piano piece. The score consists of three staves: a treble clef staff, a grand staff (treble and bass clefs), and a bass clef staff. The treble clef staff contains a melodic line with notes, slurs, and dynamic markings. Above the first measure, the tempo marking *(vii)* is written. Above the final measure, the tempo marking *Largo* is written. The grand staff shows a piano accompaniment with chords and a *pp* (pianissimo) dynamic marking. The bass clef staff contains a bass line with a *Pedale* (pedal) marking. The piece concludes with a double bar line and a wavy line indicating the end of the score.

*Allegro (Vivace)* (3)

Handwritten musical score for the first system of the *Allegro (Vivace)* section. It features a treble clef staff with a 3/4 time signature and a grand staff. The treble clef staff has a melodic line with slurs and accents. The grand staff shows a piano accompaniment with chords and a *pp* dynamic marking. The bass clef staff contains a bass line with eighth notes and a *8<sub>1</sub>* marking.

Handwritten musical score for the second system of the *Allegro (Vivace)* section. It features a treble clef staff with a 3/4 time signature and a grand staff. The treble clef staff has a melodic line with slurs and accents. The grand staff shows a piano accompaniment with chords and a *pp* dynamic marking. The bass clef staff contains a bass line with eighth notes and a *9<sub>1</sub>* marking.

Handwritten musical score for the first system. The system consists of three staves. The top staff is a treble clef with a whole rest. The middle staff is a piano part with a piano dynamic marking (*p*) and a circled '9'. It features a melodic line with eighth notes and a quarter note, and a bass line with a circled '9' and a quarter note. The bottom staff is a bass clef with a circled '9' and a quarter note.

Handwritten musical score for the second system. The system consists of three staves. The top staff is a treble clef with a whole rest. The middle staff is a piano part with a piano dynamic marking (*p*) and a circled 'ff'. It features a melodic line with eighth notes and a quarter note, and a bass line with a circled 'ff' and a quarter note. The bottom staff is a bass clef with a circled 'ff' and a quarter note.

Handwritten musical score for the third system. The system consists of three staves. The top staff is a treble clef with a whole rest. The middle staff is a piano part with a piano dynamic marking (*p*) and a circled 'ff'. It features a melodic line with a wavy line and a quarter note, and a bass line with a circled 'ff' and a quarter note. The bottom staff is a bass clef with a circled 'ff' and a quarter note.

Handwritten musical score for the first system. The treble clef staff contains a melodic line with a slur over the first two measures, followed by a dense sixteenth-note passage in the third measure, and a quarter note in the fourth measure. The bass clef staff contains a bass line with a circled 'A' in the first measure, followed by chords in the second and third measures, and rests in the fourth measure.

Handwritten musical score for the second system. The treble clef staff continues the melodic line with a slur over the first two measures, followed by a dense sixteenth-note passage in the third measure, and a quarter note in the fourth measure. The bass clef staff contains a bass line with chords in the first and second measures, and rests in the third and fourth measures.

Handwritten musical score for the third system. The treble clef staff features a melodic line with a slur over the first two measures, followed by a dense sixteenth-note passage in the third measure, and a quarter note in the fourth measure. The bass clef staff contains a bass line with chords in the first and second measures, and rests in the third and fourth measures.

Handwritten musical score for the first system. The treble clef part features a complex melodic line with many notes, including a large slur over the first two measures and a  $\text{b}^{\flat}$   $9^{\flat}$  marking. The bass clef part contains chords and bass notes, with a circled  $\text{P}$  marking in the first measure.

Handwritten musical score for the second system. The treble clef part has a melodic line with a circled  $\text{F}$  marking and the word "acc." written below it. The bass clef part contains chords and bass notes.

Handwritten musical score for the third system. The treble clef part has a wavy line with a circled  $\text{F}$  marking and a  $\text{b}^{\flat}$   $9^{\flat}$  marking. The bass clef part contains chords and bass notes, with a circled  $\text{P}$  marking in the final measure.

Vom Anfang  
mit || dann  
weiter

*mod. accel.*

Handwritten musical score for the first system. The top staff is in treble clef and contains a melodic line with triplets and a dense sixteenth-note passage. The bottom staff is in bass clef and contains a bass line with chords and a few notes. The dynamic marking *pp* is present in both staves. A crescendo hairpin is drawn across the system.

Handwritten musical score for the second system. The notation is similar to the first system, with triplets and sixteenth-note passages. The dynamic marking *f* is circled in both staves. A crescendo hairpin is drawn across the system.

Handwritten musical score for the third system. The top staff has a melodic line with a *tempo* marking above it. The bottom staff has a bass line with chords. Dynamics include *ff* and *f*, some of which are circled. The system ends with a large, decorative flourish.

4

ad lib (tr) (longissima) rubato

Lento

Handwritten musical score for the first system. It features a treble clef staff with a large '6' written above it. The bass staff contains a series of chords, with 'pp' (pianissimo) written above the first chord and 'V' (vibrato) written above the fifth chord. A circled 'p' (piano) dynamic marking is present in the treble staff. The music is marked 'Lento' and 'ad lib (tr) (longissima) rubato'.

Handwritten musical score for the second system. It features a treble clef staff with a melodic line and a bass staff with chords. The treble staff has several slurs and dynamic markings like 'V' and '>'. The bass staff has chords with some accidentals (sharps) and dynamic markings like 'V'. The music is marked 'Lento' and 'ad lib (tr) (longissima) rubato'.



Handwritten musical score for the first system. The top staff is in treble clef and contains a melodic line with notes, rests, and slurs. The two bottom staves are in bass clef and contain accompaniment with notes and rests. The system concludes with a double bar line.

Handwritten musical score for the second system. It follows the same notation as the first system, with a treble clef staff and two bass clef staves. The music continues with various rhythmic and melodic patterns.

Handwritten musical score for the third system. The word "Chor" is written above the first staff. The system includes a treble clef staff and two bass clef staves. The final measure of the system is marked with "(rit)" above the staff, indicating a ritardando. The system ends with a double bar line.

*slow frei* *rubato*

*breit* (*slow frei*)

(*frei*)

schwach langsam

Handwritten musical score for the first system. The top staff is in treble clef and contains a melodic line with notes and slurs. The bottom two staves are in grand staff (treble and bass clefs) and contain piano accompaniment. A circled '4p' is written in the left margin of the grand staff. A 'Pedal' marking is present at the beginning of the piano part.

(rit)

Handwritten musical score for the second system, continuing the melodic and piano parts from the first system. It features similar notation for the treble and grand staves.

Handwritten musical score for the third system, concluding with a 'Pedal' marking and the instruction 'ausklingen lassen' (let it ring out). The piano part includes a circled '4p' and a 'Pedal' marking. The instruction 'ausklingen lassen' is written at the bottom right of the system.