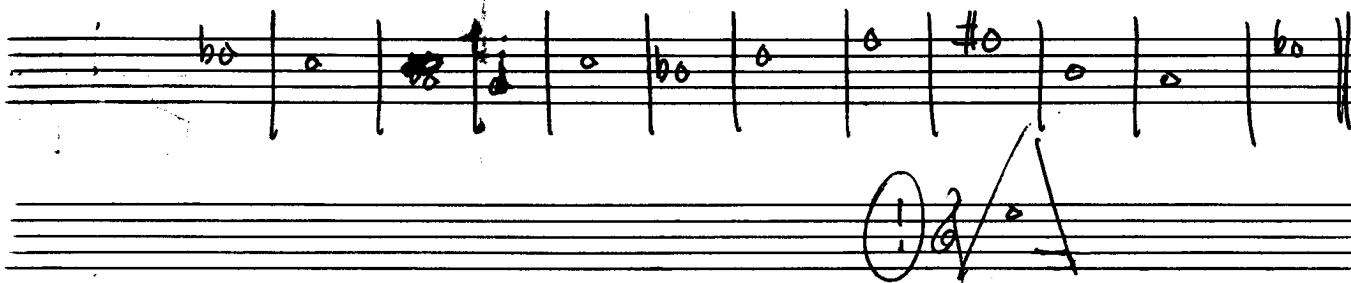


(7) Teile für Flöte und
Klavier)

(nach Motiven
spanischer Volkslieder)

1979 - 1981 -

Adolf Scherbaum



Tanz aus Salamanka

1

Allegro

f

Handwritten musical score for the first system. It consists of two staves: a treble clef staff and a bass clef staff. The key signature is one sharp (F#). The first staff has a treble clef and a key signature of one sharp. The second staff has a bass clef and a key signature of one sharp. The music is written in a style that suggests a 3/4 or 4/4 time signature. The first staff has a dynamic marking of *pr. out* and a *pesante* marking. The second staff has a *ff* marking. There are various musical notations including notes, rests, and slurs.

Handwritten musical score for the second system. It consists of two staves: a treble clef staff and a bass clef staff. The key signature is one sharp (F#). The first staff has a treble clef and a key signature of one sharp. The second staff has a bass clef and a key signature of one sharp. The music is written in a style that suggests a 3/4 or 4/4 time signature. The first staff has a dynamic marking of *ff* and a *mp* marking. The second staff has a *ff* marking. There are various musical notations including notes, rests, and slurs.

Handwritten musical score for the third system. It consists of two staves: a treble clef staff and a bass clef staff. The key signature is one sharp (F#). The first staff has a treble clef and a key signature of one sharp. The second staff has a bass clef and a key signature of one sharp. The music is written in a style that suggests a 3/4 or 4/4 time signature. The first staff has a dynamic marking of *f* and a *ff* marking. The second staff has a *f* marking. There are various musical notations including notes, rests, and slurs.

(Tempo 1.)

accel.

3üppig

accel. →

meno *(rit)* *f*

(3+)

Allegro — *Accel.* →

Presto

② La flor de la Canela

Langsam schreitend

Handwritten musical score for the first system. The piece is in 6/8 time, indicated by a circled '6' with a note value of a quarter note. The tempo is 'Langsam schreitend'. The first system consists of three measures. The first measure is mostly blank with a circled 'P' (piano) dynamic marking. The second measure contains a piano accompaniment with chords and a fermata. The third measure features a melody in the right hand with a 'p' dynamic and a slur over the notes, and piano accompaniment below.

Handwritten musical score for the second system, consisting of three measures. The first measure has a melody in the right hand with a slur and a piano accompaniment. The second measure continues the melody with a triplet of eighth notes and a piano accompaniment. The third measure features a melody with a slur and a piano accompaniment.

Handwritten musical score for the third system, consisting of three measures. The first measure has a melody in the right hand with a slur and a piano accompaniment. The second measure continues the melody with a slur and a piano accompaniment. The third measure features a melody with a slur and a piano accompaniment.

rit *Conga*

Handwritten musical score for the first system. The top staff is for the flute, marked with a 4/4 time signature and a 'Conga' marking. It features a melodic line with various ornaments and dynamics like *rit*, *p*, and *mp*. The piano accompaniment consists of chords and bass notes in the left hand, with dynamics like *p* and *mp*.

rit *animato*

Handwritten musical score for the second system. The top staff is for the flute, marked with a 4/4 time signature and an 'animato' marking. It features a melodic line with various ornaments and dynamics like *rit*, *p*, and *mp*. The piano accompaniment consists of chords and bass notes in the left hand, with dynamics like *p* and *mp*.

rit *(rit)* *p*

Handwritten musical score for the third system. The top staff is for the flute, marked with a 4/4 time signature. It features a melodic line with various ornaments and dynamics like *rit*, *(rit)*, and *p*. The piano accompaniment consists of chords and bass notes in the left hand, with dynamics like *f* and *p*.

③

Malagueña

Allegretto

(3+)

erste + Allegretto

2. + Allegro

3. + Presto

Handwritten musical score for the first system. The top staff is a flute line with a melodic line consisting of a series of eighth notes. The middle staff is the piano accompaniment, starting with a forte dynamic (**ff**) and a key signature of two flats. The bottom staff shows the bass line with a few notes and a dynamic marking of **ff**.

Handwritten musical score for the second system. The top staff continues the flute line with a melodic line. The middle staff shows the piano accompaniment with chords and a dynamic marking of **ff**. The bottom staff shows the bass line with a few notes and a dynamic marking of **ff**.

Handwritten musical score for the third system. The top staff continues the flute line with a melodic line. The middle staff shows the piano accompaniment with chords and a dynamic marking of **ff**. The bottom staff shows the bass line with a few notes and a dynamic marking of **ff**.

Handwritten musical score for the first system. The top staff is for the flute, showing a melodic line with various ornaments (trills, grace notes, and accents) and a final fermata. The middle staff is for the piano right hand, featuring chords and melodic lines with accents. The bottom staff is for the piano left hand, showing a simple bass line.

Handwritten musical score for the second system. The top staff continues the flute melody with ornaments and a final fermata. The middle staff continues the piano right hand accompaniment with chords and melodic lines. The bottom staff continues the piano left hand accompaniment with a simple bass line.

Handwritten musical score for the third system. The top staff concludes the flute melody with a final cadence. The middle staff concludes the piano right hand accompaniment with a final cadence. The bottom staff concludes the piano left hand accompaniment with a final cadence.

Handwritten musical score for the first system. The treble clef staff has a key signature of one sharp (F#). The piano accompaniment is in the bass clef. The music is written in a simple, sketchy style with various ornaments and slurs.

Handwritten musical score for the second system. The treble clef staff has a key signature of one sharp (F#). The piano accompaniment is in the bass clef. The music continues with a more active melodic line in the treble and chords in the piano part, including a circled 'P' marking.

Handwritten musical score for the third system. It begins with the tempo marking "Prestissimo" and "Allegro". The treble clef staff has a key signature of one sharp (F#). The piano accompaniment is in the bass clef. The music is characterized by a very fast, rhythmic melodic line in the treble with many slurs and accents. The piano part consists of rests with arrows indicating the tempo change.

No. 4 (Tirana)

(♩) *Appassionata*

Handwritten musical score for the first system. The top staff is for the flute, showing a melodic line with slurs and accents. The bottom two staves are for the piano accompaniment, with chords and dynamics like p and f .

Handwritten musical score for the second system. The flute part continues with slurs and accents. The piano accompaniment includes chords and dynamics like f .

Handwritten musical score for the third system. The flute part concludes with a $Coda$ symbol. The piano accompaniment includes dynamics like p and f .

etwas quader

Handwritten musical score for the first system. It consists of a treble clef staff and a bass clef staff. The treble staff contains several measures of music with notes, rests, and dynamic markings. A circled 'p' is written above the first measure, and a circled 'f' is written above the third measure. The bass staff contains notes and rests corresponding to the treble staff. There are also some handwritten annotations like 'q' and 'm' above the notes.

Handwritten musical score for the second system. It consists of a treble clef staff and a bass clef staff. The treble staff contains several measures of music with notes, rests, and dynamic markings. A circled 'p' is written above the second measure, and a circled 'f' is written above the fourth measure. The word 'romantic' is written in the second measure. The bass staff contains notes and rests corresponding to the treble staff.

appassionato

Handwritten musical score for the third system. It consists of a treble clef staff and a bass clef staff. The treble staff contains several measures of music with notes, rests, and dynamic markings. A circled 'ff' is written above the first measure, and a circled 'f' is written above the second measure. The bass staff contains notes and rests corresponding to the treble staff.

(poco rit) *zurück*

(frei) *(rit + dim)*

Flöte (frei)

ad libitum: kein D.C. sondern weiter)

COPIA
Tempo 1.)

(rit)

Handwritten musical score for the first system. The top staff is for the flute, showing a melodic line with various ornaments (accents, slurs, and grace notes) and a circled sharp sign. The bottom two staves are for the piano, showing chords and slurs. A circled sharp sign is also present in the piano part.

scherzhaft)

(rit)

Handwritten musical score for the second system. The top staff is for the flute, showing a melodic line with trills and slurs. The bottom two staves are for the piano, showing sustained chords and slurs. A circled 'p' is present in the flute part.

(rit)

Canto

Handwritten musical score for the third system. The top staff is for the flute, showing a melodic line with slurs and accents. The bottom two staves are for the piano, showing chords and slurs. A circled 'pp' is present in the piano part.

5 Bolero

Allegro

Handwritten musical notation for the first system of 'Bolero'. It features a treble clef staff with a '3' above it, a bass clef staff with a '4' and a circled 'p' below it, and a grand staff with a circled 'f' in the bass clef staff. The notation includes rests, notes, and dynamic markings.

Handwritten musical notation for the second system of 'Bolero'. It features a treble clef staff with notes, a bass clef staff with notes, and a grand staff with notes and dynamic markings like 'p' and 'f'.

Handwritten musical notation for the third system of 'Bolero'. It features a treble clef staff with notes, a bass clef staff with notes, and a grand staff with notes and dynamic markings like 'p' and 'f'.

Handwritten musical score for the first system. The top staff is for the flute, showing a melodic line with various ornaments (trills, grace notes, slurs) and dynamics such as $f=$. The bottom two staves are for the piano accompaniment, featuring chords and bass notes.

Handwritten musical score for the second system. The top staff continues the flute part with dynamic markings like $p=$ and $f<$. The piano accompaniment continues with chords and bass notes, including a circled p marking.

Handwritten musical score for the third system. The top staff concludes the flute part with a final flourish and dynamics like ff . The piano accompaniment concludes with sustained chords.

Handwritten musical score for the first system. The top staff is for the flute, showing a melodic line with trills, grace notes, and dynamic markings like *f* and *p*. The bottom staff is for the piano, with chords in the right hand and a melodic line in the left hand. The system consists of four measures.

Handwritten musical score for the second system. The flute part continues with trills and grace notes, marked with *f*. The piano accompaniment features chords and a melodic line. The system consists of four measures.

Handwritten musical score for the third system. The flute part concludes with a melodic flourish, marked with *f*. The piano accompaniment features chords and a melodic line. The system consists of four measures.

Handwritten musical score for the first system. The top staff is for the flute, showing rapid sixteenth-note passages with dynamic markings like *f* and *p*. The bottom two staves are for the piano, with chords and a melodic line in the right hand and a bass line in the left hand.

Handwritten musical score for the second system. The flute part continues with similar rhythmic patterns. The piano accompaniment features chords and a melodic line, with dynamic markings like *f* and *p*.

Handwritten musical score for the third system. It begins with a *Presto* tempo marking. The flute part has rapid sixteenth-note passages. The piano accompaniment includes chords and a melodic line, ending with a *Coda* section marked with a double bar line and a wavy line.

⑥ Portugiesisches Lied.

languetto (ruhig —)

Handwritten musical score for the first system. It consists of two staves: a treble clef staff and a bass clef staff. The treble staff begins with a whole rest, followed by a series of notes with slurs and accents. A circled 'p' (piano) dynamic marking is present. The bass staff contains chords with slurs and accents, and a circled 'p' dynamic marking. The key signature has one sharp (F#).

Handwritten musical score for the second system. It consists of two staves. The treble staff continues with notes, slurs, and accents, including a circled 'p' dynamic marking. The bass staff features chords with slurs and accents, and a circled 'p' dynamic marking. The key signature has one sharp (F#).

Handwritten musical score for the third system. It consists of two staves. The treble staff continues with notes, slurs, and accents, including a circled 'f' (forte) dynamic marking. The bass staff features chords with slurs and accents, and a circled 'f' dynamic marking. The key signature has one sharp (F#).

(rit...)

Tempo 1 *(rit)*

gr. rit *Lunga*

Pedal

7

Polo -

Allegro *Finale*

(sehr bewegt) bewegt

Handwritten musical score for the first system. It features a treble clef, a 3/4 time signature, and a forte (ff) dynamic marking. The music consists of four measures with various rhythmic patterns and accents.

Handwritten musical score for the second system. It shows a treble clef and a piano (p) dynamic marking. The music consists of four measures with various rhythmic patterns and accents.

Handwritten musical score for the third system. It features a treble clef and a piano (p) dynamic marking. The music consists of four measures with various rhythmic patterns and accents.

Handwritten musical score for the first system. The treble clef part has a key signature of one sharp (F#) and a common time signature (C). The melody is marked with a circled 'p' and includes a wavy line above the staff. The bass clef part includes a circled 'p' and some chordal notation.

Handwritten musical score for the second system. The treble clef part has a key signature of one sharp (F#) and a common time signature (C). The melody is mostly rests. The bass clef part includes a circled 'ff' and chordal notation.

Handwritten musical score for the third system. The treble clef part has a key signature of one sharp (F#) and a common time signature (C). The melody is marked with a circled 'f' and includes a wavy line above the staff. The bass clef part includes a circled 'f' and chordal notation.

The image shows a handwritten musical score for flute and piano, organized into four systems. Each system consists of a flute staff (top) and a piano staff (bottom).

- System 1:** The flute staff begins with a treble clef and a key signature of one sharp (F#). It features a melodic line with slurs and accents. The piano staff starts with a bass clef and a key signature of one sharp, containing chords and rhythmic markings. A dynamic marking 'f' is present.
- System 2:** The flute staff continues the melodic line. The piano staff shows a descending bass line with slurs and accents. A dynamic marking 'ff' is circled.
- System 3:** The flute staff has a more complex melodic line with many slurs and accents. The piano staff features a series of chords with slurs. A key signature change to two flats (Bb) is indicated at the beginning of the system.
- System 4:** The flute staff has a relatively simple melodic line. The piano staff features a series of chords with slurs. A dynamic marking 'ff' is circled.

Handwritten musical score for the first system. The flute part (top staff) begins with a treble clef and a key signature of one sharp (F#). It contains several measures of music with complex rhythmic patterns, including sixteenth and thirty-second notes, and rests. The piano accompaniment (bottom two staves) consists of chords and rests, with some notes marked with accents (^).

Handwritten musical score for the second system. The flute part continues with similar rhythmic complexity, including a triplet of sixteenth notes. The piano accompaniment remains mostly rests with some chordal textures.

Handwritten musical score for the third system. The flute part features more intricate rhythmic figures and rests. The piano accompaniment includes some active lines with notes and rests.

Handwritten musical score for the fourth system. The flute part concludes with complex rhythmic patterns. The piano accompaniment includes dynamic markings such as 'p' (piano) and 'ff' (fortissimo), along with rests.

Handwritten musical score for the first system. The top staff is in treble clef, showing a melodic line with accents (^) and a fermata. The grand staff below consists of a right-hand piano staff with chords and a left-hand bass staff with a melodic line. Dynamics include f and p .

Handwritten musical score for the second system. The top staff features a complex rhythmic pattern with many sixteenth notes and accents (^). The grand staff below shows chords in the right hand and a bass line in the left hand. Dynamics include p .

Handwritten musical score for the third system. The top staff continues the melodic line with accents (^) and dynamic markings like f , ff , p , and pp . The grand staff below shows chords and a bass line. Dynamics include f , ff , p , and pp .

Handwritten musical score for the first system. The top staff is for the flute, showing a melodic line with slurs and accents. The bottom two staves are for the piano, with chords and a melodic line. A dynamic marking 'f' is present.

Handwritten musical score for the second system. The notation continues with slurs and accents in the flute part. The piano accompaniment includes a circled 'ff' dynamic marking and a sharp sign.

Handwritten musical score for the third system. The flute part has a wavy line indicating a tremolo or rapid oscillation. The piano accompaniment features chords and a melodic line.

Handwritten musical score for the first system. The top staff is in treble clef with a key signature of one flat (B-flat). It contains a melodic line with a slur over the first two measures, an accent (^) over the first note of the second measure, and a fermata over the final measure. The bottom staff is in bass clef, showing piano accompaniment with a slur over the first two measures and a fermata over the final measure. The piano part includes several flats (B-flat, E-flat, A-flat) and a circled 'f' dynamic marking.

Handwritten musical score for the second system. The top staff is in treble clef with a key signature of one flat. It features a melodic line with a slur over the first two measures, a triplet of eighth notes in the second measure, and a fermata over the final measure. The bottom staff is in bass clef, showing piano accompaniment with a slur over the first two measures and a fermata over the final measure. The piano part includes several flats and a circled 'ff' dynamic marking.

Handwritten musical score for the third system. The top staff is in treble clef with a key signature of one flat. It features a melodic line with a slur over the first two measures, a fermata over the final measure, and a circled 'f' dynamic marking. The bottom staff is in bass clef, showing piano accompaniment with a slur over the first two measures and a fermata over the final measure. The piano part includes several flats and a circled 'f' dynamic marking.

Handwritten musical score for the first system. The top staff is in treble clef and contains a complex melodic line with many ornaments, slurs, and a triplet of eighth notes. The bottom staff is in bass clef and provides a piano accompaniment with chords and a few moving lines. Dynamic markings include *ff* in both staves.

Handwritten musical score for the second system. The top staff continues the melodic line with slurs and ornaments. The bottom staff continues the piano accompaniment. Dynamic markings include *p* (piano) and *f* (forte).

Handwritten musical score for the third system. The top staff concludes the melodic line with a wavy line indicating a fermata. The bottom staff concludes the piano accompaniment. The system ends with a double bar line and a fermata.

Prestissimo

Handwritten musical score for the first system. It consists of three staves. The top staff is in treble clef and contains three measures with notes marked with accents and slurs. The middle and bottom staves are in bass clef and contain chords and notes with various accidentals (sharps, flats, naturals) and slurs. A key signature change is indicated by a bracket above the first staff, showing a sequence of sharps and flats.

Handwritten musical score for the second system. It consists of three staves. The top staff is in treble clef and features a complex melodic line with many accidentals and a wavy line above it. The middle and bottom staves are in bass clef and contain chords and notes with various accidentals and slurs. A key signature change is indicated by a bracket above the first staff.

Handwritten musical score for the third system. It consists of three staves. The top staff is in treble clef and contains notes with accents and slurs. The middle and bottom staves are in bass clef and contain chords and notes with various accidentals and slurs. The system concludes with a large, decorative flourish in the bottom staff.

4 Teile für Flöte + Klavier
(1967) - 1980 (kann auch von Harfe begleitet werden!)

(unter Verwendung spanischer Volksweisen)

Adolf Scherbaum

Zwölftonreihe



Teil ①

ruhig (frei)

frei festhalten!

Handwritten musical score for the first system. The flute part starts with a rest, then plays a series of notes with dynamic markings *p*, *f*, *p*, and *pp*. The piano accompaniment consists of chords in the right hand and single notes in the left hand.

Handwritten musical score for the second system. The flute part features a long, sweeping melodic line with dynamic markings *p* and *f*. The piano accompaniment continues with chords and single notes.

Handwritten musical score for the third system. The flute part includes a section marked *rubbato* with a long, sustained note. The piano accompaniment features chords and single notes.

Crit-din

quasi free

Lento

Teil 2 No. ②

frei

Handwritten musical score for the first system. The top staff is a treble clef with a melodic line. The bottom staff is a grand staff (treble and bass clefs) with a piano accompaniment. The tempo is marked "frei". Dynamics include *p*, *f*, and accents. The key signature has one sharp (F#).

Handwritten musical score for the second system. The top staff is a treble clef with a melodic line. The bottom staff is a grand staff with a piano accompaniment. Dynamics include *f* and accents. The key signature has one sharp (F#).

breit

Handwritten musical score for the third system. The top staff is a treble clef with a melodic line. The bottom staff is a grand staff with a piano accompaniment. The tempo is marked "breit". Dynamics include *ff*. The key signature has one sharp (F#).

Handwritten musical score for the first system. The top staff is for the flute, showing a long note with a slur and a sharp sign. The bottom two staves are for the piano, with chords and a dynamic marking of *ff*. The system concludes with a double bar line and the word "FIN" written vertically on the right.

Handwritten musical score for the second system, marked "Lento". It features piano accompaniment with chords and dynamic markings including *p*, *f*, and *ff*. The system ends with a double bar line.

Handwritten musical score for the third system, marked "frei". It features piano accompaniment with chords and dynamic markings including *f*. The system concludes with a double bar line and the words "git - din" and "D.C. al Fine" written below the staff.

Teil ③

lento *rit*

Handwritten musical score for the first system. The top staff is for the flute, and the bottom staff is for the piano. The tempo is marked 'lento' and 'rit' (ritardando). The flute part begins with a long note, followed by a melodic line with slurs and accents. The piano part has a triplet of eighth notes. Dynamics include 'p' and 'p='.

(frei)

Handwritten musical score for the second system. The top staff is for the flute, and the bottom staff is for the piano. The tempo is marked '(frei)'. The flute part has a long melodic line with slurs and accents, ending in a rapid sixteenth-note passage. Dynamics include 'pp', 'p', and 'ff'.

Handwritten musical score for the third system. The top staff is for the flute, and the bottom staff is for the piano. The flute part has a long melodic line with slurs and accents, ending in a rapid sixteenth-note passage. Dynamics include 'pp', 'ff', and 'p'.

VIVACE | con fuoco

Handwritten musical score for the first system. The treble clef part begins with a 3/8 time signature. The piano part starts with a circled 'f' (forte) dynamic marking. The notation includes various notes, rests, and slurs.

Handwritten musical score for the second system. The treble clef part features a circled 'f' dynamic marking. The piano part also has a circled 'f' dynamic marking. The notation includes notes, rests, and slurs.

Handwritten musical score for the third system. The treble clef part features a circled 'f' dynamic marking. The piano part also has a circled 'f' dynamic marking. The notation includes notes, rests, and slurs.

Handwritten musical score for the first system. It consists of a treble clef staff and a bass clef staff. The treble staff contains several measures with notes, rests, and dynamic markings such as *f* and *fz*. The bass staff contains notes, rests, and a circled *p* marking. There are also some handwritten annotations above the treble staff, including a wavy line and a slur.

Handwritten musical score for the second system. It consists of a treble clef staff and a bass clef staff. The treble staff contains several measures with notes, rests, and dynamic markings such as *f* and *fz*. The bass staff contains notes, rests, and a circled *p* marking. There are also some handwritten annotations above the treble staff, including a wavy line and a slur.

Handwritten musical score for the third system. It consists of a treble clef staff and a bass clef staff. The treble staff contains several measures with notes, rests, and dynamic markings such as *f* and *fz*. The bass staff contains notes, rests, and a circled *p* marking. There are also some handwritten annotations above the treble staff, including a wavy line and a slur.

(rit) tempo

Prestissimo

Handwritten musical score for the first system. It consists of three staves: treble, alto, and bass. The treble staff contains a melodic line with notes, rests, and dynamic markings 'p' and 'f'. The alto and bass staves contain accompaniment with chords and rests. A large 'f' marking is placed below the bass staff.

Handwritten musical score for the second system. It consists of three staves: treble, alto, and bass. The treble staff continues the melodic line with notes and rests. The alto and bass staves contain accompaniment. A circled 'ff' marking is present in the alto staff.

Handwritten musical score for the third system. It consists of three staves: treble, alto, and bass. The treble staff features a melodic line with notes and rests, including a circled 'p' marking. The alto and bass staves contain accompaniment with notes and rests.

2.

Handwritten musical score for the first system. The flute part consists of five measures of rapid sixteenth-note passages, with a slur over the first four measures and an accent (^) over the fifth. The piano accompaniment features chords in the right hand and single notes in the left hand, with rests in the second, third, and fourth measures.

Handwritten musical score for the second system. The flute part continues with rapid sixteenth-note passages, slurred across all five measures. The piano accompaniment consists of chords in the right hand and single notes in the left hand, with rests in the second, third, and fourth measures.

Handwritten musical score for the third system. The flute part features a series of chords in the first four measures, each with an accent (^), followed by a more complex passage in the fifth measure. The piano accompaniment includes chords in the right hand and single notes in the left hand, with rests in the second, third, and fourth measures. A wavy line is drawn above the first four measures of the piano part.

quod. →

als (Teil 4)

folgt moderato Teil ①

4 Teile für Flöte
und Klavier (oder Harfe)

(über Fragmente spanischer
Volkslieder)

1980

Adolf Scherbaum

ganz frei gestalten 1

frei

ruhig

Handwritten musical score for the first system, featuring a flute line and a piano accompaniment. The flute part has a melodic line with slurs and accents, and a dynamic marking 'p'. The piano part has a rhythmic accompaniment with a circled '4' and a sharp sign.

(rit)

Handwritten musical score for the second system, featuring a flute line and a piano accompaniment. The flute part has a melodic line with slurs and accents, and a dynamic marking 'p'. The piano part has a rhythmic accompaniment with a circled '4' and a sharp sign.

lento (frei)

Handwritten musical score for the third system, featuring a flute line and a piano accompaniment. The flute part has a melodic line with slurs and accents, and a dynamic marking 'pp'. The piano part has a long, sustained chord with a circled '4' and a sharp sign.

(2)

frei) rubato

Handwritten musical score for the first system. The top staff is for the flute, and the bottom two staves are for the piano. The flute part begins with a treble clef, a key signature of one sharp (F#), and a 3/4 time signature. It contains a series of triplets and a long, sweeping melodic line. The piano accompaniment consists of chords and arpeggiated figures in both hands, with a key signature of one sharp and a common time signature.

Handwritten musical score for the second system. The notation continues from the first system. The flute part features more complex rhythmic patterns, including triplets and a long, sweeping melodic line. The piano accompaniment continues with chords and arpeggiated figures. Dynamics include *ff* and *coll*.

Handwritten musical score for the third system. The tempo is marked *breve*. The flute part features a series of chords and arpeggiated figures. The piano accompaniment consists of chords and arpeggiated figures. Dynamics include *ff*.

RUHIG (♩)

Handwritten musical score for the first system. The top staff is for the flute, and the bottom two staves are for the piano. The flute part begins with a circled '3' and a 'p' dynamic. It features several measures with slurs and accents. The piano accompaniment starts with a circled 'p' and includes various chordal textures and dynamics like 'mf'.

Handwritten musical score for the second system. The flute part continues with a 'f' dynamic and includes a '(git)' marking. The piano accompaniment features a change in chordal structure and dynamics like 'mf'.

Lento

Handwritten musical score for the third system, marked 'Lento'. The flute part is mostly rests. The piano accompaniment starts with a circled 'pp' and includes a 'G.P.' marking. The system ends with a double bar line and a fermata.

triu

Largo

pp

Pedale

Allegro (Vivace) 3

3

4 pp

p

Handwritten musical score for the first system. The top staff (treble clef) contains rests. The middle staff (treble clef) contains a melodic line with eighth notes and accents. The bottom staff (bass clef) contains a bass line with eighth notes and a circled 'f' dynamic marking.

Handwritten musical score for the second system. The top staff (treble clef) contains rests. The middle staff (treble clef) contains a melodic line with eighth notes and accents. The bottom staff (bass clef) contains a bass line with eighth notes and a circled 'ff' dynamic marking.

Handwritten musical score for the third system. The top staff (treble clef) contains a wavy line. The middle staff (treble clef) contains a melodic line with eighth notes and accents. The bottom staff (bass clef) contains a bass line with eighth notes and a circled 'ff' dynamic marking.

Handwritten musical score for the first system. The treble clef part begins with a key signature of one sharp (F#) and a common time signature. It features a melodic line with slurs and accents, including a triplet of eighth notes. The piano accompaniment consists of chords in the right hand and a bass line in the left hand, with a circled F# in the bass clef.

Handwritten musical score for the second system. The treble clef part continues the melodic line with slurs and accents, including a triplet of eighth notes. The piano accompaniment features chords in the right hand and a bass line in the left hand.

Handwritten musical score for the third system. The treble clef part concludes the piece with a final cadence, featuring a key signature change to one flat (Bb) and a common time signature. The piano accompaniment features chords in the right hand and a bass line in the left hand.

Handwritten musical score for the first system. The flute part (top staff) begins with a dynamic marking $f =$ and features a melodic line with a slur over the first two measures, followed by a sharp accent on the third measure. The piano accompaniment (bottom staff) consists of chords in the right hand and bass notes in the left hand. A circled f is written in the first measure of the piano part.

Handwritten musical score for the second system. The flute part (top staff) starts with a circled $f =$ and a *stacc.* marking. The piano accompaniment (bottom staff) features chords in the right hand and bass notes in the left hand. A circled $f =$ is also present in the first measure of the piano part.

Handwritten musical score for the third system. The flute part (top staff) begins with a wavy line and a dynamic marking ff . The piano accompaniment (bottom staff) includes chords in the right hand and bass notes in the left hand. A circled f is written in the first measure of the piano part, and another circled ff appears in the final measure of the piano part.

Handwritten musical score for the first system. The top staff is in treble clef with a key signature of one sharp (F#) and a dynamic marking of *fff*. The bottom staff is in bass clef. The music consists of several measures with notes and rests, including a circled *f* dynamic marking.

Handwritten musical score for the second system. The top staff is in treble clef with a key signature of one flat (Bb) and a dynamic marking of *f'*. The bottom staff is in bass clef with a dynamic marking of *ff*. The music features a wavy line in the upper register and notes with accents in the lower register.

Handwritten musical score for the third system. The top staff is in treble clef with a key signature of one sharp (F#) and a dynamic marking of *f*. The bottom staff is in bass clef. The music includes notes with accents and a circled *f* dynamic marking. There are handwritten annotations "Flatterz." and "din".

mod. accel.

Handwritten musical score for the first system, featuring a flute and piano. The flute part has a dynamic marking *pp* and includes triplet eighth notes and sixteenth-note runs. The piano accompaniment has a dynamic marking *pp* and consists of chords and a bass line.

Handwritten musical score for the second system, continuing the piece. The flute part has dynamic markings *f* and includes more sixteenth-note runs. The piano accompaniment has dynamic markings *f* and includes chords and a bass line.

tempo

Handwritten musical score for the third system, concluding the piece. The flute part has dynamic markings *f* and includes a final sixteenth-note run. The piano accompaniment has dynamic markings *f* and includes chords and a bass line.

4

sehr frei / langsam) rubato

Lento

Handwritten musical score for the first system. The top staff is in treble clef, showing a melodic line with various accidentals (sharps, naturals, flats) and slurs. The bottom two staves are in grand staff (treble and bass clefs), showing piano accompaniment with chords and arpeggiated figures.

Handwritten musical score for the second system. The top staff continues the melodic line with slurs and accidentals. The piano accompaniment in the grand staff below continues with chords and arpeggiated patterns. Dynamic markings like 'p' and 'f' are present.

Handwritten musical score for the third system. The top staff shows the final melodic phrases, ending with a double bar line. The piano accompaniment in the grand staff concludes with chords. Dynamic markings like 'p' and 'f' are used throughout.

ganz frei *rubato*

breit (ganz frei)

(frei)

sehr ruhig | langsam

Handwritten musical score for the first system. The top staff is in treble clef and contains a melodic line with various ornaments and slurs. The bottom two staves are a grand staff (left and right hands) with chords and a 'Pedal' section. A circled '4' with a 'p' is written in the left hand. The key signature has two sharps (F# and C#).

(rit.)

Handwritten musical score for the second system. It continues the melodic and harmonic development from the first system. The notation includes slurs, ornaments, and dynamic markings like 'p'.

Handwritten musical score for the third system. It concludes with a large bracket and the instruction 'ausklingen lassen' (let it ring out). The notation includes various ornaments and dynamic markings like 'ppp'.