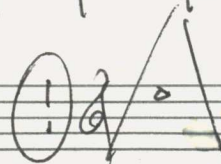


(7) Teile für Flöte und  
Klavier)

(nach Motiven  
spanischer Volkslieder)

1979 - 1981 -

Adolf Scherbaum



# Tanz aus Salamanka

1

Allegro

*f*

Handwritten musical score for the first system. It consists of three staves: a single treble clef staff at the top, and a grand staff (treble and bass clefs) below. The key signature is one sharp (F#). The first staff has a fermata and a wavy line. The second staff has a fermata and a wavy line. The third staff has a fermata and a wavy line. The word "pesante" is written above the second staff. The word "gr. out" is written above the first staff. The dynamic marking "ff" is written at the end of the first staff. There are various accents and slurs throughout the score.

Handwritten musical score for the second system. It consists of three staves: a single treble clef staff at the top, and a grand staff (treble and bass clefs) below. The word "Tempo 1" is written above the first staff. The first staff has a fermata and a wavy line. The second staff has a fermata and a wavy line. The third staff has a fermata and a wavy line. The dynamic marking "ff" is written at the beginning of the first staff. There are various accents and slurs throughout the score.

Handwritten musical score for the third system. It consists of three staves: a single treble clef staff at the top, and a grand staff (treble and bass clefs) below. The word "Cant. frei" is written above the first staff. The first staff has a fermata and a wavy line. The second staff has a fermata and a wavy line. The third staff has a fermata and a wavy line. The dynamic marking "f" is written at the beginning of the first staff. There are various accents and slurs throughout the score.

(Tempo 1.)

accel.

3üppig

accel. →

*meno* (p) ←

*rit* ←

*f* (3+)

*Allegro* — *Accel.* →

*Presto*

# ② La flor de la Canela

Langsam schreitend

Handwritten musical score for the first system. The piece is in 6/8 time, indicated by a circled '6' with a quarter note. The tempo is 'Langsam schreitend' (slowly creeping). The first staff is for the flute, and the second is for the piano. The piano part features a steady accompaniment of eighth notes in the right hand and chords in the left hand. The flute part begins with a rest, followed by a melodic line with a slur and a dynamic marking of  $p <$ . The system concludes with a fermata over the final notes.

Handwritten musical score for the second system. The piano accompaniment continues with eighth-note patterns and chords. The flute part features a melodic line with slurs, a triplet of eighth notes, and a dynamic marking of  $p <$ . The system concludes with a fermata over the final notes.

Handwritten musical score for the third system. The piano accompaniment continues with eighth-note patterns and chords. The flute part features a melodic line with slurs, a triplet of eighth notes, and a dynamic marking of  $f <$ . The system concludes with a fermata over the final notes.

*rit* *Contra*

Handwritten musical score for the first system. The top staff is for the flute, showing a melodic phrase with a circled *rit* marking and dynamic markings *p* and *mp*. The middle and bottom staves are for the piano, with a circled *p* marking and a *basso* marking. The word *Contra* is written above the second measure.

*rit* *animato*

Handwritten musical score for the second system. The top staff is for the flute, with a circled *rit* marking and an *animato* marking. The middle and bottom staves are for the piano, with a circled *p* marking and a *basso* marking. The flute part includes a circled *rit* marking and dynamic markings *p* and *f*.

*rit* *(rit)* *p*

Handwritten musical score for the third system. The top staff is for the flute, with a circled *rit* marking and a *(rit)* marking. The middle and bottom staves are for the piano, with a circled *p* marking and a *basso* marking. The flute part includes a circled *rit* marking and dynamic markings *f* and *p*.

③

# Malagueña

Allegretto

(3+)

erste + Allegretto  
2.+ Allegro

(3.+ Presto)



Handwritten musical score for the first system. The top staff is for the flute, showing a melodic line with a slur and a wavy line above it. The middle staff is for the piano, starting with a fortissimo (fff) dynamic and a key signature of two flats (B-flat and E-flat). The piano part consists of chords and rhythmic patterns, with some notes marked with accents and slurs.

Handwritten musical score for the second system. The top staff continues the flute part with a slur and a wavy line. The middle staff shows a piano accompaniment with chords and rhythmic patterns, including a circled 'S' and a wavy line. The bottom staff continues the piano accompaniment with chords and rhythmic patterns.

Handwritten musical score for the third system. The top staff continues the flute part with a slur and a wavy line. The middle staff shows a piano accompaniment with chords and rhythmic patterns, including a circled 'S' and a wavy line. The bottom staff continues the piano accompaniment with chords and rhythmic patterns, ending with a final chord and a wavy line.

Handwritten musical score for the first system. The top staff is for the flute, showing a melodic line with various ornaments (trills, grace notes, and accents) and a final flourish. The bottom two staves are for the piano, with the right hand playing chords and a melodic line, and the left hand playing a simple accompaniment.

Handwritten musical score for the second system. The notation continues from the first system, with the flute part featuring more complex ornaments and the piano accompaniment providing harmonic support.

Handwritten musical score for the third system. This system concludes the piece, with the flute part ending on a final note and the piano accompaniment providing a clear cadence.

Handwritten musical score for the first system. The top staff is in treble clef and contains a melodic line with notes, rests, and slurs. The bottom two staves are a grand staff (treble and bass clefs) with piano accompaniment. The music includes various rhythmic values and dynamic markings.

Handwritten musical score for the second system. The notation continues from the first system, showing melodic and accompaniment parts. A circled 'p' (piano) dynamic marking is visible in the piano part.

Handwritten musical score for the third system. It begins with the tempo marking "Prestissimo" and "Tempo". The music features a treble clef staff with a melodic line and a grand staff with piano accompaniment. Performance instructions include "frei" (ad libitum) and "rubato" (rhythmically free), along with arrows indicating tempo changes. A circled "ff" (fortissimo) dynamic marking is present.

Handwritten musical score for the first system. It consists of a treble clef staff with a key signature of one sharp (F#) and a bass clef staff. The music includes a wavy line at the top, a treble staff with a key signature change to two sharps (F#, C#), and a bass staff with various notes and rests.

No. 4 (Tirana)

Handwritten musical score for the second system, titled "(♩) Apassionata". It consists of a treble clef staff with a key signature of one sharp (F#) and a bass clef staff. The music includes a 3/8 time signature, a treble staff with a key signature change to two sharps (F#, C#), and a bass staff with various notes and rests.

Handwritten musical score for the first system. The top staff is for the flute, showing a melodic line with slurs and accents. The bottom two staves are for the piano, showing chords and bass notes. Dynamics include a circled 'p'.

Handwritten musical score for the second system. The top staff is for the flute, showing a melodic line with slurs and accents. The bottom two staves are for the piano, showing chords and bass notes. Dynamics include 'f'.

Handwritten musical score for the third system. The top staff is for the flute, showing a melodic line with slurs and accents. The bottom two staves are for the piano, showing chords and bass notes. Dynamics include 'p' and 'rit'. The system ends with a CODA symbol.

etwas quader

Handwritten musical score for the first system. The flute part (top staff) begins with a treble clef and a key signature of one flat. It features a series of notes with slurs and accents, including a trill-like figure. The piano part (bottom staves) starts with a grand staff and includes a bass clef. Dynamics are marked with  $p$  and  $f$ . The system concludes with a double bar line.

Handwritten musical score for the second system. The flute part (top staff) continues with a treble clef and a key signature of one flat. It features a series of notes with slurs and accents, including a trill-like figure. The piano part (bottom staves) continues with a grand staff and includes a bass clef. Dynamics are marked with  $p$  and  $f$ . The system concludes with a double bar line.

appassionato

Handwritten musical score for the third system. The flute part (top staff) begins with a treble clef and a key signature of one flat. It features a series of notes with slurs and accents, including a trill-like figure. The piano part (bottom staves) starts with a grand staff and includes a bass clef. Dynamics are marked with  $ff$  and  $f$ . The system concludes with a double bar line.

*(poco rit)* *zurück*

*(frei)* *(rit + dim)*

*Flöte (frei)*

ad libitum: kein D.C.  
sondern weiter)

COA ( )  
 Tempo 1.)

The first system of the handwritten musical score consists of two staves. The upper staff is in treble clef and contains a series of notes with various ornaments and slurs. The lower staff is in bass clef and features a few notes with a dynamic marking of 'pp' (pianissimo) and some rests. The notation is dense and includes many accidentals and slurs.

The second system continues the musical piece. It features two staves with complex notation, including many notes, slurs, and dynamic markings such as 'f' (forte) and 'pp' (pianissimo). The notation is highly detailed, with many accidentals and slurs.

The third system of the handwritten musical score shows further development of the piece. It consists of two staves with complex notation, including many notes, slurs, and dynamic markings. The notation is highly detailed, with many accidentals and slurs.



(rit)

Handwritten musical score for the first system. The top staff is for the flute, showing a melodic line with slurs and accents. The bottom staff is for the piano, showing chords and a wavy line indicating tremolo or a similar effect. A dynamic marking of **ff** is present.

scherzhaft)

(rit)

Handwritten musical score for the second system. The top staff is for the flute, showing a melodic line with slurs and accents. The bottom staff is for the piano, showing chords and a wavy line indicating tremolo or a similar effect. A dynamic marking of **p** is present.

(rit)

Cento

Handwritten musical score for the third system. The top staff is for the flute, showing a melodic line with slurs and accents. The bottom staff is for the piano, showing chords and a wavy line indicating tremolo or a similar effect. A dynamic marking of **pp** is present.

5 Bolero

Allegro

Handwritten musical score for the first system. The flute part (top staff) begins with a dynamic marking of  $f=$  and includes several ornaments (trills, grace notes) and a slur over a series of notes. The piano accompaniment (bottom two staves) features chords in the right hand and bass notes in the left hand, with a dynamic marking of  $f$ .

Handwritten musical score for the second system. The flute part (top staff) starts with a dynamic marking of  $p=$ , followed by  $f=$ , and includes various ornaments and slurs. The piano accompaniment (bottom two staves) features chords in the right hand and bass notes in the left hand, with a dynamic marking of  $p=$  and a circled  $f$  in the final measure.

Handwritten musical score for the third system. The flute part (top staff) includes a trill ornament and a dynamic marking of  $ff$ . The piano accompaniment (bottom two staves) features chords in the right hand and bass notes in the left hand, with a dynamic marking of  $ff$ .

Handwritten musical score for the first system. The top staff is for the flute, showing a series of trills and melodic fragments with dynamic markings like *f* and *p*. The bottom staff is for the piano, with a bass line and chords. The system consists of four measures.

Handwritten musical score for the second system. The flute part continues with more complex rhythmic patterns and trills. The piano accompaniment features chords and a melodic line. The system consists of four measures.

Handwritten musical score for the third system. The flute part concludes with a final melodic flourish. The piano accompaniment continues with chords and a melodic line. The system consists of four measures.

Handwritten musical score for the first system. The top staff is in treble clef and the bottom staff is in bass clef. The music consists of several measures with complex rhythmic patterns and dynamic markings. A forte (**f**) dynamic is marked at the beginning, and a piano (**p**) dynamic is marked in the second measure. There are also accents (^) and slurs over the notes.

Handwritten musical score for the second system. It continues the piece with similar notation. A forte (**f**) dynamic is marked at the beginning. The music features complex rhythmic patterns and dynamic markings, including accents (^) and slurs.

Handwritten musical score for the third system. It begins with a **Presto** tempo marking. The music continues with complex rhythmic patterns and dynamic markings, including a fortissimo (**ff**) dynamic. The system concludes with a **Coda** section, indicated by a double bar line and the word "Coda" written vertically. The notation includes various notes, rests, and dynamic markings.

# ⑥ Portugiesisches Lied.

languetto (ruhig —)

Handwritten musical score for the first system. The top staff is in treble clef, and the bottom staff is in bass clef. The key signature has one sharp (F#). The first measure of the top staff is a whole rest. The second measure starts with a circled 'p' (piano) dynamic. The melody in the top staff features a series of eighth notes with accents and a slur. The piano accompaniment in the bottom staff consists of chords with accents and a bass line with a sharp sign.

Handwritten musical score for the second system. The top staff continues the melody with a circled 'f' (forte) dynamic. The piano accompaniment in the bottom staff features chords with accents and a bass line with a sharp sign. A circled 'p' (piano) dynamic appears at the end of the system.

Handwritten musical score for the third system. The top staff continues the melody with a circled 'f' (forte) dynamic. The piano accompaniment in the bottom staff features chords with accents and a bass line with a sharp sign. A circled 'f' (forte) dynamic appears at the end of the system.

*(rit...)*

Handwritten musical score for the first system. The top staff (flute) contains a melodic line with a slur over the first two measures and a circled 'p' dynamic marking in the third measure. The bottom staff (piano) provides accompaniment with chords and a circled 'p' dynamic marking.

Tempo 1 *(rit)*

Handwritten musical score for the second system. It begins with the marking 'Tempo 1' and a circled 'p' dynamic marking. The flute part features a melodic line with slurs and accents. The piano accompaniment includes chords with accents and a circled 'p' dynamic marking.

*ev. rit*

*Lunga*

*Pedal*

Handwritten musical score for the third system. It includes the marking 'ev. rit' and 'Lunga'. The flute part has a melodic line with slurs and accents. The piano accompaniment features a wide interval in the first measure and a circled 'pp' dynamic marking. A 'Pedal' instruction is written at the bottom left.

7

Polo -

Finale

Allegro

(sehr bewegt) bewegt

Handwritten musical score for the first system. It features a treble clef, a 3/4 time signature, and a forte (ff) dynamic marking. The music consists of four measures with various rhythmic patterns and accents.

Handwritten musical score for the second system. It shows a treble clef and a piano (p) dynamic marking. The music consists of four measures with various rhythmic patterns and accents.

Handwritten musical score for the third system. It shows a treble clef and a piano (p) dynamic marking. The music consists of four measures with various rhythmic patterns and accents.



Handwritten musical score for the first system. The top staff (treble clef) contains a wavy line with a '4' above it and notes with stems. A circled 'p' is written below the staff. The bottom staff (bass clef) contains notes with stems and a circled 'p'.

Handwritten musical score for the second system. The top staff (treble clef) contains rests. The bottom staff (bass clef) contains notes with stems and a circled 'ff'.

Handwritten musical score for the third system. The top staff (treble clef) contains notes with stems and a circled 'f'. The bottom staff (bass clef) contains notes with stems and a circled 'f'.

The image shows a handwritten musical score for flute and piano, organized into four systems. Each system consists of a flute staff and a piano staff.

- System 1:** The flute staff begins with a treble clef and a key signature of one sharp (F#). It contains a melodic line with slurs and accents. The piano staff starts with a bass clef and a key signature of one sharp (F#), featuring a chord and subsequent rhythmic markings.
- System 2:** The flute staff continues the melodic line. The piano staff has a circled **ff** dynamic marking and shows a chord with a flat (Bb) and a bass line with rhythmic slurs.
- System 3:** The flute staff continues with slurs and accents. The piano staff shows a chord with flats (Bb, Eb) and a bass line with slurs.
- System 4:** The flute staff continues with slurs and accents. The piano staff has a circled **ff** dynamic marking and shows a chord with flats (Bb, Eb) and a bass line with slurs.

Handwritten musical score for the first system. Treble clef, key signature of one sharp (F#), 4/4 time signature. The melody is written in the treble clef and includes several chords and notes, with a large slur over the first four measures. The piano accompaniment is written in the bass clef and consists of a few notes.

Handwritten musical score for the second system. Treble clef, key signature of one sharp (F#), 4/4 time signature. The melody continues from the first system, featuring a triplet of eighth notes in the second measure. The piano accompaniment is minimal.

Handwritten musical score for the third system. Treble clef, key signature of one sharp (F#), 4/4 time signature. The melody continues from the second system, featuring several chords and notes, with a large slur over the first four measures. The piano accompaniment is minimal.

Handwritten musical score for the fourth system. Treble clef, key signature of one sharp (F#), 4/4 time signature. The melody continues from the third system, featuring several chords and notes, with a large slur over the first four measures. The piano accompaniment is minimal.

Handwritten musical score for the first system. The top staff is for the flute, showing a melodic line with several notes marked with accents (^). The middle two staves are for the piano, with chords and a bass line. A circled 'p' indicates piano dynamics. The bottom staff shows a bass line with notes and a circled 'p'.

Handwritten musical score for the second system. The flute part features a complex, rapid passage with many notes and slurs. The piano accompaniment consists of chords and a bass line. A circled 'p' is present at the beginning of the system.

Handwritten musical score for the third system. The flute part continues with dynamic markings such as 'f' and 'pp'. The piano accompaniment is highly detailed with many notes and slurs. A circled 'p' is visible in the middle of the system.

Handwritten musical score for the first system. The top staff is in treble clef, showing a melodic line with slurs and accents. A dynamic marking of  $f$  is present. The bottom two staves are a grand staff with piano accompaniment, including chords and a melodic line in the right hand.

Handwritten musical score for the second system. The top staff continues the melodic line with slurs and accents. The bottom two staves show piano accompaniment with circled dynamic markings of  $ff$  in both the right and left hands.

Handwritten musical score for the third system. The top staff shows a melodic line with slurs. The bottom two staves show piano accompaniment, including a wavy line in the right hand and chords in the left hand.

Handwritten musical score for the first system. The top staff (flute) begins with a treble clef and a 4/4 time signature. It contains a melodic line with a dynamic marking of  $mf$  and a slur over the first two measures. The bottom staff (piano) starts with a bass clef and contains a descending eighth-note scale in the first measure, followed by rests in the subsequent measures.

Handwritten musical score for the second system. The top staff (flute) has a treble clef and contains a melodic line with a triplet of eighth notes in the first measure, a dynamic marking of  $ff$ , and a slur over the final two measures. The bottom staff (piano) has a bass clef and contains a descending eighth-note scale in the first measure, followed by chords in the second and third measures.

Handwritten musical score for the third system. The top staff (flute) has a treble clef and contains a melodic line with a dynamic marking of  $f$  and a slur over the final two measures. The bottom staff (piano) has a bass clef and contains chords in the first two measures, followed by a wavy line in the third measure and a final chord in the fourth measure.

Handwritten musical score for the first system. The treble clef staff contains a complex melodic line with a triplet of eighth notes, a fermata, and a wavy line indicating a tremolo. The piano accompaniment in the bass clef consists of simple chords and rests. Dynamics include *ff* and *f*.

Handwritten musical score for the second system. The treble clef staff features a melodic line with a fermata and a wavy line. The piano accompaniment includes a circled *p* dynamic marking and a fermata. Dynamics include *p* and *f*.

Handwritten musical score for the third system. The treble clef staff has a melodic line with a wavy line and a fermata. The piano accompaniment includes a circled *p* dynamic marking and a fermata. Dynamics include *ff* and *f*.

# Prestissimo

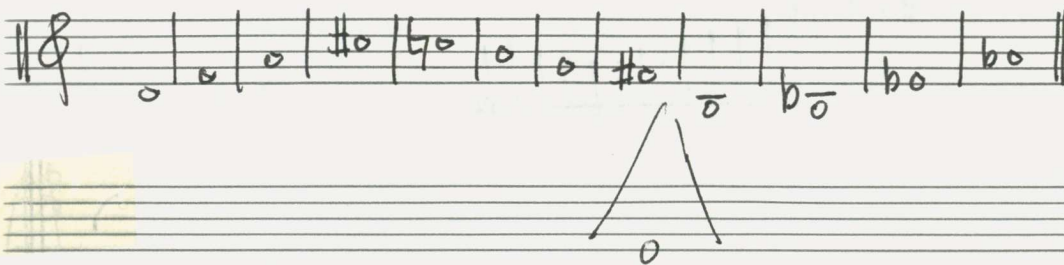


4 Teile für Flöte + Klavier  
(1967) - 1980 (kann auch von Harfe begleitet werden!)

(unter Verwendung spanischer Volksweisen)

Adolf Scherbaum

Zwölftonreihe



Teil ①

ruhig (frei)

frei gestalten!

Handwritten musical score for the first system. The treble clef staff contains a melodic line starting with a rest, followed by notes with dynamic markings *p*, *f*, *p*, and *pp*. The piano accompaniment is in 3/4 time, with a circled '4p' and notes in the right and left hands.

Handwritten musical score for the second system. The treble clef staff has a melodic line with dynamic markings *p* and *f*, and notes with accidentals. The piano accompaniment has notes with a sharp sign and a '4' marking.

Handwritten musical score for the third system. The treble clef staff has a melodic line with dynamic markings *p* and 'canto' written vertically. The piano accompaniment has notes with a sharp sign and a '4' marking.

Crit-din

*quasi free*

pp

p =

f = ff >

(p)

ff

ff

p

(ff)

*Lento*

pp

f >

pp

pp

*Lento*

(pp)

# Teil 2 No. ②

frei

Handwritten musical score for the first system. The top staff is a treble clef with a melodic line starting on G4, moving to A4, B4, C5, and then descending. It includes dynamic markings p, mf, and f, and phrasing slurs. The bottom two staves are a grand staff with piano accompaniment, showing a key signature of one sharp (F#) and a common time signature. The piano part consists of sustained chords and a simple bass line.

Handwritten musical score for the second system. The top staff continues the melodic line from the first system, with dynamic markings mf and f. The piano accompaniment in the bottom two staves continues with sustained chords and a bass line, maintaining the key signature of one sharp.

breit

Handwritten musical score for the third system. The top staff features a wide melodic line with dynamic markings ff and mf. The piano accompaniment in the bottom two staves continues with sustained chords and a bass line. The system concludes with a double bar line.

Handwritten musical score for the first system. The top staff is in treble clef and contains a melodic line with a slur over several notes, including a sharp sign. Dynamics include **ff** and **p**. The bottom staff is in bass clef and contains a bass line with notes and slurs. Dynamics include **ff**. The system concludes with a double bar line and the handwritten text "FIN".

Handwritten musical score for the second system. The top staff is in treble clef and contains a melodic line with a slur. Dynamics include **p** and **ff**. The bottom staff is in bass clef and contains a bass line with chords and slurs. Dynamics include **p** and **ff**. The system concludes with a double bar line.

Handwritten musical score for the third system. The top staff is in treble clef and contains a melodic line with a slur and a sharp sign. Dynamics include **f**. The bottom staff is in bass clef and contains a bass line with notes and slurs. Dynamics include **f**. The system concludes with a double bar line and the handwritten text "rit - dim" and "D.C. al Fine".

Teil (3)

lento | *rit*

Handwritten musical score for the first system. It consists of three staves: flute (top), piano (middle), and bass (bottom). The flute part begins with a rest, followed by a melodic line with a wavy hairpin and a fermata. The piano part has a triplet of eighth notes marked 'p'. The bass part has a rest followed by a few notes.

(frei)

Handwritten musical score for the second system. It consists of three staves: flute (top), piano (middle), and bass (bottom). The flute part has a long melodic line with a wavy hairpin and a fermata, marked 'pp' and 'ff'. The piano part has a few notes.

Handwritten musical score for the third system. It consists of three staves: flute (top), piano (middle), and bass (bottom). The flute part has a long melodic line with a wavy hairpin and a fermata, marked 'pp', 'ff', and 'pp'. The piano part has a few notes.

VIVACE (con fuoco)

Handwritten musical score for the first system. The flute part (top staff) has a treble clef and a 3-measure rest. The piano part (bottom staff) has a bass clef and a 3-measure rest. The tempo is marked 'VIVACE (con fuoco)'. There are some handwritten annotations like 'f' and 'p' in the flute part.

Handwritten musical score for the second system. The flute part (top staff) has a treble clef and a 7-measure rest. The piano part (bottom staff) has a bass clef and a 7-measure rest. The tempo is marked 'VIVACE (con fuoco)'. There are some handwritten annotations like 'f' and 'p' in the flute part.

Handwritten musical score for the third system. The flute part (top staff) has a treble clef and a 5-measure rest. The piano part (bottom staff) has a bass clef and a 5-measure rest. The tempo is marked 'VIVACE (con fuoco)'. There are some handwritten annotations like 'f' and 'p' in the flute part.

Handwritten musical score for the first system. The treble clef staff contains several measures with notes, rests, and dynamic markings such as *ff* and *p*. The bass clef staff shows chords and rests. The system concludes with a circled *p* marking.

Handwritten musical score for the second system. The treble clef staff features complex notation with slurs and accents. The bass clef staff includes chords and rests. Dynamic markings *f* and *p* are present. The system ends with a circled *f* marking.

Handwritten musical score for the third system. The treble clef staff contains notes and rests. The bass clef staff shows chords and rests. A dynamic marking of *ff* is visible. The system concludes with a circled *f* marking.



(rit) ..... tempo

Handwritten musical score for the first system. It consists of two staves: a treble clef staff and a bass clef staff. The treble staff begins with a 'rit' (ritardando) marking and contains several notes with accents. The bass staff starts with a 'ff' (fortissimo) marking and contains a series of notes. A double bar line separates the first two measures from the last two. The second system begins with a 'tempo' marking and features a 'p' (piano) dynamic marking. The notation includes various note values, rests, and slurs.

Handwritten musical score for the second system. It continues from the first system with two staves. The treble staff has several notes with slurs and accents. The bass staff contains notes with slurs and accents. A double bar line is present. The notation includes various note values, rests, and slurs.

Handwritten musical score for the third system. It continues with two staves. The treble staff has several notes with slurs and accents. The bass staff contains notes with slurs and accents. A double bar line is present. The notation includes various note values, rests, and slurs. The system concludes with a large, stylized signature or flourish in the bottom right corner.

Prestissimo

Handwritten musical score for the first system. It consists of three staves: Treble, Alto, and Bass. The Treble staff begins with a dynamic marking *p* and contains several notes with slurs and accents. The Alto staff has a dynamic marking *p* and contains chordal structures. The Bass staff has a dynamic marking *f* and contains a long horizontal line with a slur underneath. The system concludes with a dynamic marking *f*.

Handwritten musical score for the second system. It consists of three staves: Treble, Alto, and Bass. The Treble staff begins with a dynamic marking *ff* and contains several notes with slurs and accents. The Alto staff has a dynamic marking *ff* and contains chordal structures. The Bass staff has a dynamic marking *f* and contains a long horizontal line with a slur underneath. The system concludes with a dynamic marking *f*.

Handwritten musical score for the third system. It consists of three staves: Treble, Alto, and Bass. The Treble staff begins with a dynamic marking *ff* and contains several notes with slurs and accents. The Alto staff has a dynamic marking *ff* and contains chordal structures. The Bass staff has a dynamic marking *p* and contains a long horizontal line with a slur underneath. The system concludes with a dynamic marking *p*.

2.

Handwritten musical score for the first system. The top staff is for the flute, showing a series of rapid sixteenth-note passages with various accidentals and slurs. The bottom two staves are for the piano, with chords and rests. A dynamic marking  $ff =$  is present in both the flute and piano parts.

Handwritten musical score for the second system. The flute part continues with rapid sixteenth-note passages. The piano accompaniment consists of chords and rests. A dynamic marking  $ff =$  is present in the piano part.

Handwritten musical score for the third system. The top staff features a wavy line above it. The flute part has a series of notes with slurs. The piano part has chords and rests. A dynamic marking  $ff =$  is present. At the bottom, the word "quod." is written with an arrow pointing to the right.

als (Teil 4)

folgt moderats Teil ①

4 Teile für Flöte  
und Klavier (oder Harfe)

(über Fragmente spanischer  
Volkslieder)

1980

Adolf Scherbaum

ganz frei gestaltet 1

frei

*ruhig*

Handwritten musical score for the first system, featuring a flute and piano part. The flute part has a melodic line with slurs and accents, and a dynamic marking 'p'. The piano part has a bass line with a key signature change to one sharp and a dynamic marking '4p'.

*(rit)*

Handwritten musical score for the second system, featuring a flute and piano part. The flute part has a melodic line with slurs and accents, and a dynamic marking 'p'. The piano part has a bass line with a dynamic marking 'p'.

*Lento (frei)*

Handwritten musical score for the third system, featuring a flute and piano part. The flute part has a melodic line with slurs and accents, and a dynamic marking 'pp'. The piano part has a bass line with a dynamic marking 'pp' and a large, wide slur.

(2)

frei) rubato

Handwritten musical score for the first system. The flute part begins with a treble clef, a key signature of one sharp (F#), and a common time signature. It features a series of triplets of eighth notes, followed by a long, sweeping melodic line. The piano accompaniment consists of chords in the left hand and a long, sustained note in the right hand, marked with a fermata.

Handwritten musical score for the second system. The flute part continues with triplets and a long melodic line. The piano accompaniment features chords and a long, sustained note, marked with a fermata. The dynamics are marked with 'ff'.

Handwritten musical score for the third system. The flute part has a more rhythmic and melodic character. The piano accompaniment features chords and a long, sustained note, marked with a fermata. The tempo is marked 'breit' and the dynamics are marked 'ff'.



RUHIG (♩)

Handwritten musical score for the first system. The top staff is for the flute, and the bottom two staves are for the piano. The piano part includes a circled 'p' and a key signature change to two sharps (F# and C#). The flute part has a dynamic marking 'p' and various ornaments and slurs.

Handwritten musical score for the second system. The top staff is for the flute, and the bottom two staves are for the piano. The piano part includes a dynamic marking 'f' and a 'rit' marking. The flute part has a dynamic marking 'f' and various ornaments and slurs.

Lento

Handwritten musical score for the third system, marked 'Lento'. The top staff is for the flute, and the bottom two staves are for the piano. The piano part includes a dynamic marking 'pp' and a 'G.P.' marking. The flute part has various ornaments and slurs.

triu

Largo

pp

Pedale

Allegro (Vivace) 3

3

4 pp

8

p

3

Handwritten musical score for the first system. The top staff (treble clef) contains rests. The middle staff (treble clef) contains a melody with accents (^) and a quarter note (q). The bottom staff (bass clef) contains a bass line with a circled 'f' dynamic marking and various rhythmic values.

Handwritten musical score for the second system. The top staff (treble clef) contains rests. The middle staff (treble clef) contains a melody with a slur and a quarter note (q). The bottom staff (bass clef) contains a bass line with a circled 'ff' dynamic marking and various rhythmic values.

Handwritten musical score for the third system. The top staff (treble clef) contains rests. The middle staff (treble clef) contains a melody with a slur and a quarter note (q). The bottom staff (bass clef) contains a bass line with a circled 'ff' dynamic marking and various rhythmic values.

Handwritten musical score for the first system. The top staff is for the flute, showing a melodic line with a long slur over the first three measures. The notes are G4, A4, B4, C5, B4, A4, G4. The bottom staff is for the piano, with a circled key signature of one sharp (F#) and a common time signature. The piano accompaniment consists of chords in the right hand and bass notes in the left hand.

Handwritten musical score for the second system. The flute part continues with a melodic line, including a triplet of notes in the first measure. The piano accompaniment features chords and bass notes, with some dynamic markings like accents and slurs.

Handwritten musical score for the third system. The flute part concludes with a melodic flourish. The piano accompaniment includes chords and bass notes, with dynamic markings like accents and slurs.

Handwritten musical score for the first system. The top staff (flute) begins with a dynamic marking  $f =$  and contains a melodic flourish with various accidentals (flats and naturals). The bottom staff (piano) features a series of chords in the right hand and bass notes in the left hand. A circled  $f$  is written in the piano part.

Handwritten musical score for the second system. The top staff (flute) starts with a circled  $f =$  and a *stacc.* marking. It contains a melodic line with several accidentals. The bottom staff (piano) has chords in the right hand and bass notes in the left hand. A circled  $f =$  is present in the piano part.

Handwritten musical score for the third system. The top staff (flute) begins with a wavy line and a circled  $f =$ . The bottom staff (piano) contains chords in the right hand and bass notes in the left hand. A circled  $f =$  is written in the piano part, and a final  $ff$  dynamic marking is at the end of the system.

Handwritten musical score for the first system. The treble clef part has a key signature of one sharp (F#) and a dynamic marking of *fff*. The piano part has a circled *f* and a fermata-like symbol.

Handwritten musical score for the second system. The treble clef part has a key signature of one sharp (F#) and a dynamic marking of *ff*. The piano part has a dynamic marking of *ff* and a wavy line above it.

Handwritten musical score for the third system. The treble clef part has a key signature of one sharp (F#) and a dynamic marking of *ff*. The piano part has a dynamic marking of *ff* and a circled *ff*.

54  
 vom Anfang  
 mit || dann  
 weiter

*mod accel.*

Handwritten musical score for the first system, featuring a flute and piano part. The flute part has a dynamic marking *pp=* and includes triplet eighth notes and sixteenth-note runs. The piano part has a dynamic marking *pp=* and consists of chords and bass notes.

Handwritten musical score for the second system, continuing the flute and piano parts. The flute part has dynamic markings *f* in circles and includes sixteenth-note runs. The piano part has dynamic markings *f* in circles and consists of chords and bass notes.

*tempo*

Handwritten musical score for the third system, concluding the piece. The flute part has a dynamic marking *f* in a circle and includes a final flourish. The piano part has a dynamic marking *f* in a circle and includes a large, decorative flourish.

4

sehr frei / langsam) rubato

Lento



Handwritten musical score for the first system. The top staff is in treble clef, showing a melodic line with various notes, slurs, and accents. The bottom two staves are in grand staff (treble and bass clefs), showing a complex accompaniment with many notes and slurs. Dynamic markings include *f* and *ff*.

Handwritten musical score for the second system. The top staff continues the melody with slurs and accents. The bottom two staves continue the accompaniment. Dynamic markings include *p* and *f*.

Handwritten musical score for the third system. The top staff concludes the melody with a final cadence. The bottom two staves conclude the accompaniment. Dynamic markings include *p* and *f*. The word "trist" is written above the staff. The system ends with a double bar line and repeat signs.

*ganz frei* *rubato*

*breit (ganz frei)*

*(frei)*

sehr ruhig | langsam

Handwritten musical score for the first system. It consists of three staves: a treble clef staff, a bass clef staff, and a 'Pedal' staff. The time signature is 4/4. The first staff contains a melodic line with notes G4, A4, B4, C5, and D5, with various ornaments and dynamics. The second and third staves contain accompaniment with notes G4, A4, B4, and C5. A circled '4' with a 'p' is written in the second staff. The system ends with a double bar line.

(rit)

Handwritten musical score for the second system. It continues the three-staff format. The first staff has notes G4, A4, B4, C5, and D5. The second and third staves continue the accompaniment. The system ends with a double bar line.

Handwritten musical score for the third system. It continues the three-staff format. The first staff has notes G4, A4, B4, C5, and D5. The second and third staves continue the accompaniment. A 'Pedal' marking is present at the bottom left. The system ends with a double bar line and a large wavy line indicating a fade-out. The text 'ausklingen lassen' is written at the bottom right.