

# 8 EPISODEN FÜR Flöte + Klavier

H. Scherbaum (1984)

Flöte Mod. — pesante —

1

2

3

Handwritten musical score for measures 7 and 8. The score is written on two staves (treble and bass clef). Measure 7 shows a melodic line in the treble clef with a slur and a fermata, and a bass line with a pedal point. Measure 8 continues the melodic line with a slur and a fermata, and the bass line has a circled '3' indicating a triplet. The music is in a key with one sharp (F#) and a common time signature.

Handwritten musical score for measures 9 and 10. The score is written on two staves. Measure 9 features a complex melodic line in the treble clef with triplets and a slur, and a bass line with a pedal point labeled "Pedal (H)". Measure 10 continues the melodic line with triplets and a slur, and the bass line has a circled "3" indicating a triplet. The music is in a key with one sharp (F#) and a common time signature.

Handwritten musical score for measures 11 and 12. The score is written on two staves. Measure 11 shows a melodic line in the treble clef with a slur and a fermata, and a bass line with a pedal point labeled "Pedal". Measure 12 continues the melodic line with a slur and a fermata, and the bass line has a circled "rit" indicating a ritardando. The music is in a key with one sharp (F#) and a common time signature.

(rubig)

7

9

10

11

12

Lento

13

14

11

lento (sehr ruhig)

pp

legg.

pp (Pedal)

12

pp

Pedal

13

pp

Pedal

Flap.

14

pp

Pedal

(p) (nicht Trem.)

(4)

*Lento (frei)*

13

16

*Sehr rubig.*

17

5

*Lento*

pp

G.P.

pp *Cedat*

*Sehr langsam*

18

*FIN*

5a

2

Prato

Handwritten musical score for the first system, measures 1-3. The top staff contains notes with accents and dynamic markings such as *ff* and *p*. The middle and bottom staves show rhythmic patterns with stems and beams. A large slur spans across the first two measures.

Handwritten musical score for the second system, measures 4-6. The notation continues with notes, rests, and dynamic markings like *ff* and *p*. A slur covers the first two measures of this system.

Handwritten musical score for the third system, measures 7-9. The notation includes notes, rests, and dynamic markings like *f* and *p*. A slur is present over the first two measures.

Handwritten musical score for the first system, measures 1-3.

6

Handwritten musical score for the first system, featuring three staves. The top staff is in treble clef with a key signature of one flat (B-flat) and a common time signature. It contains a melodic line with a large slur over the first two measures and various dynamics like *f* and *ff*. The middle and bottom staves are in bass clef and provide harmonic support with chords and bass lines. The notation includes notes, rests, and dynamic markings.

Handwritten musical score for the second system, also with three staves. The top staff continues the melodic line with a slur and includes a *dim* marking. The middle and bottom staves continue the harmonic accompaniment with complex chordal structures and bass lines. The notation is dense with notes and dynamic markings.

Handwritten musical score for the third system, consisting of three staves. The top staff has a key signature change to two flats (B-flat and E-flat) and a common time signature. It features a melodic line with a slur and a *dim* marking. The middle staff includes a circled *ff* marking and the word *Pedal* written below it. The bottom staff shows a bass line with a slur and a *dim* marking. The system concludes with a measure containing a circled *7* and a measure with a circled *20*.



Handwritten musical score for the first system, measures 19-21. It features a treble clef staff with a key signature of one sharp (F#) and a bass clef staff. The music includes complex chordal textures with many accidentals (sharps and flats) and dynamic markings such as *pp* and *ppp*. A bracketed section in the treble staff indicates a specific passage. The page number 21 is written in the bottom right corner.

Handwritten musical score for the second system, measures 20-22. It continues with the treble and bass clef staves. The notation includes various rhythmic values and dynamic markings like *f* and *pp*. The page number 21 is also present in the bottom right corner of this system.

Handwritten musical score for the third system, measures 21-22. This system includes a circled 'P' in the treble staff and a circled 'P' in the bass staff. A prominent marking 'Pedal' with an accent (^) is written in the bass staff. Dynamic markings include *pp*, *f*, and *ff*. The page number 22 is written in the bottom right corner.

Handwritten musical score for the fourth system, measures 22-23. It features a circled 'P' in the treble staff and a circled 'P' in the bass staff. The notation includes a circled 'P' and the instruction 'no hair (slacc.)' in the treble staff. Dynamic markings include *f* and *ff*. The page number 22 is written in the bottom right corner.

Handwritten musical score for measures 21-23. The top staff is a treble clef with a whole rest. The middle staff is an alto clef with a melodic line starting on G4, marked 'P' and 'Catal' with a circled 'M'. The bottom staff is a bass clef with a whole rest. Measure 23 ends with a double bar line and a fermata.

Handwritten musical score for measures 24-25. The top staff is a treble clef with a melodic line starting on G4, marked 'p' and '(Flatter)'. The middle staff is an alto clef with a melodic line starting on G4, marked 'pp'. The bottom staff is a bass clef with a whole rest. Measure 25 ends with a double bar line and a fermata.

Handwritten musical score for measures 26-28. The top staff is a treble clef with a melodic line starting on G4, marked 'p'. The middle staff is an alto clef with a melodic line starting on G4, marked 'pp'. The bottom staff is a bass clef with a whole rest. Measure 28 ends with a double bar line and a fermata.

Handwritten musical score for measures 29-31. The top staff is a treble clef with a whole rest. The middle staff is an alto clef with a melodic line starting on G4, marked 'p'. The bottom staff is a bass clef with a whole rest. Measure 31 ends with a double bar line and a fermata.

2

Handwritten musical score for measures 21-23. The system includes a treble clef and a bass clef. Measure 21 shows a treble staff with a melodic line starting on G4, moving to A4, B4, and C5, with a slur and an accent. The bass staff has a bass line starting on G2, moving to F2, E2, and D2. Measure 22 has a treble staff with a whole rest and a bass staff with a whole rest. Measure 23 has a treble staff with a melodic line starting on G4, moving to A4, B4, and C5, with a slur and an accent. The bass staff has a bass line starting on G2, moving to F2, E2, and D2. Dynamic markings include 'pp' and 'f'.

26

Handwritten musical score for measures 24-26. The system includes a treble clef and a bass clef. Measure 24 shows a treble staff with a melodic line starting on G4, moving to A4, B4, and C5, with a slur and an accent. The bass staff has a bass line starting on G2, moving to F2, E2, and D2. Measure 25 has a treble staff with a whole rest and a bass staff with a whole rest. Measure 26 has a treble staff with a melodic line starting on G4, moving to A4, B4, and C5, with a slur and an accent. The bass staff has a bass line starting on G2, moving to F2, E2, and D2. Dynamic markings include 'pp' and 'f'.

27

Handwritten musical score for measures 27-29. The system includes a treble clef and a bass clef. Measure 27 shows a treble staff with a melodic line starting on G4, moving to A4, B4, and C5, with a slur and an accent. The bass staff has a bass line starting on G2, moving to F2, E2, and D2. Measure 28 has a treble staff with a whole rest and a bass staff with a whole rest. Measure 29 has a treble staff with a melodic line starting on G4, moving to A4, B4, and C5, with a slur and an accent. The bass staff has a bass line starting on G2, moving to F2, E2, and D2. Dynamic markings include 'f' and 'p'.

10

Handwritten musical score for the first system, featuring a grand staff with treble and bass clefs. The music is written in a key with one sharp (F#) and a common time signature (C). The notation includes various notes, rests, and dynamic markings such as *f* and *ff*. A large slur covers the first two measures, and another slur covers the last two measures. There are also some handwritten annotations like "trun" and "drum" with checkmarks.

Handwritten musical score for the second system, continuing the piece. It features a grand staff with treble and bass clefs. The notation includes various notes, rests, and dynamic markings such as *f* and *ff*. A large slur covers the first two measures, and another slur covers the last two measures. There are also some handwritten annotations like "trun" and "drum" with checkmarks.

Handwritten musical score for the third system, concluding the piece. It features a grand staff with treble and bass clefs. The notation includes various notes, rests, and dynamic markings such as *f* and *ff*. A large slur covers the first two measures, and another slur covers the last two measures. There are also some handwritten annotations like "trun" and "drum" with checkmarks. The system ends with a boxed number "28" and a double bar line.

Handwritten musical score for measures 29-30. The score is written on five staves. The top two staves are for the right hand, and the bottom three are for the left hand. Measure 29 shows a complex chordal texture with many notes and some slurs. Measure 30 continues this texture with some changes in dynamics and articulation. There are some handwritten annotations like 'p' and 'f'.

Handwritten musical score for measures 30-31. The score is written on five staves. The top two staves are for the right hand, and the bottom three are for the left hand. Measure 30 shows a continuation of the complex texture. Measure 31 shows a change in the right hand part, with some notes being beamed together. There are some handwritten annotations like 'p' and 'f'.

Handwritten musical score for measures 31-32. The score is written on five staves. The top two staves are for the right hand, and the bottom three are for the left hand. Measure 31 shows a continuation of the complex texture. Measure 32 shows a change in the right hand part, with some notes being beamed together. There are some handwritten annotations like 'p' and 'f'.

Handwritten musical score for measures 32-33. The score is written on five staves. The top two staves are for the right hand, and the bottom three are for the left hand. Measure 32 shows a continuation of the complex texture. Measure 33 shows a change in the right hand part, with some notes being beamed together. There are some handwritten annotations like 'p' and 'f'.

Handwritten musical score for measures 33-35, top system. The system consists of three staves. The top staff is a treble clef with a key signature of one sharp (F#). The middle staff is a bass clef with a key signature of one sharp (F#). The bottom staff is a bass clef with a key signature of one sharp (F#). The music is marked with a circled 'P' and 'Pedal' with a circled 'P'. There are various musical notations including notes, rests, and dynamic markings.

Handwritten musical score for measures 33-35, middle system. The system consists of three staves. The top staff is a treble clef with a key signature of one sharp (F#). The middle staff is a bass clef with a key signature of one sharp (F#). The bottom staff is a bass clef with a key signature of one sharp (F#). The music is marked with a circled 'P' and '(Flutter)'. There are various musical notations including notes, rests, and dynamic markings.

Handwritten musical score for measures 34-35, bottom system. The system consists of three staves. The top staff is a treble clef with a key signature of one sharp (F#). The middle staff is a bass clef with a key signature of one sharp (F#). The bottom staff is a bass clef with a key signature of one sharp (F#). The music is marked with a circled 'P' and '35'. There are various musical notations including notes, rests, and dynamic markings.

Handwritten musical score for measures 35-36, bottom system. The system consists of three staves. The top staff is a treble clef with a key signature of one sharp (F#). The middle staff is a bass clef with a key signature of one sharp (F#). The bottom staff is a bass clef with a key signature of one sharp (F#). The music is marked with a circled 'P' and '35'. There are various musical notations including notes, rests, and dynamic markings.

Tempo

36

Subito

(Flüchtig)

37

38

39

Lento

pp

G.P.

pp Pedal

3 3 <

(frc)

ff

C

39

FIN

13.B



Allegro con brio (Presto)

3

Handwritten musical score for measures 40-41, system 1. It features three staves: treble, alto, and bass clefs. The music includes various notes, rests, and dynamic markings such as 'ffp' and 'ff'. There are also some handwritten annotations like 'P' in a circle.

Handwritten musical score for measures 41-42, system 2. It features three staves. The music continues with complex rhythmic patterns and dynamic markings like 'fp' and 'ff'. There are some handwritten annotations like 'P' in a circle.

Handwritten musical score for measures 42-43, system 3. It features three staves. The music continues with complex rhythmic patterns and dynamic markings like 'fp' and 'ff'. There are some handwritten annotations like 'P' in a circle.

Handwritten musical score for measures 43-44, system 4. It features three staves. The music continues with complex rhythmic patterns and dynamic markings like 'fp' and 'ff'. There are some handwritten annotations like 'P' in a circle.

Copyright © 2010 by Hal Leonard Music Publishing Co.

Handwritten musical score for a string quartet, consisting of four systems of staves. The notation includes various musical symbols such as clefs, notes, rests, and dynamic markings. The score is divided into measures by vertical bar lines. The first system has two measures, the second has three, the third has three, and the fourth has three. There are some handwritten annotations and corrections throughout the score.

42

15

Handwritten musical score for measures 43-45, system 1. It features three staves: Treble, Middle, and Bass. Measure 43 has a dynamic marking of *p*. The music includes various notes, rests, and slurs.

Handwritten musical score for measures 44-45, system 2. It features three staves: Treble, Middle, and Bass. Measure 44 has a dynamic marking of *pp* and the instruction "Pedal". The music includes various notes, rests, and slurs.

Handwritten musical score for measures 45-46, system 3. It features three staves: Treble, Middle, and Bass. Measure 45 has a dynamic marking of *mf* and the instruction "Pedal". The music includes various notes, rests, and slurs.

Handwritten musical score for measures 46-48, system 4. It features three staves: Treble, Middle, and Bass. Measure 46 has a dynamic marking of *mf* and the instruction "Pedal". Measure 47 has a dynamic marking of *f*. The music includes various notes, rests, and slurs.

Handwritten musical score for measures 47-48. The score is written on three staves. The top staff has a treble clef and a key signature of one sharp (F#). The middle staff has a treble clef and a key signature of one sharp (F#). The bottom staff has a bass clef. The music features various dynamics such as *pp*, *dim*, and *p*, along with articulation marks like accents and slurs. A circled measure number '47' is at the end of the first system.

Handwritten musical score for measures 48-49, labeled 'Block A'. The score is written on two staves. The top staff has a bass clef and a key signature of one sharp (F#). The bottom staff has a bass clef. The music features dynamics like *pp* and *f*. A circled measure number '48' is at the end of the first system.

Handwritten musical score for measures 49-50, labeled 'Block A'. The score is written on two staves. The top staff has a treble clef and a key signature of one sharp (F#). The bottom staff has a bass clef. The music features dynamics like *pp* and *f*. A circled measure number '49' is at the end of the first system.

Handwritten musical score for measures 50-51, labeled 'Block A'. The score is written on two staves. The top staff has a treble clef and a key signature of one sharp (F#). The bottom staff has a bass clef. The music features dynamics like *fp* and *p*. A circled measure number '50' is at the end of the first system.

Handwritten musical score for measures 51 and 52. The system consists of two staves: a treble clef staff on top and a bass clef staff on the bottom. The treble staff contains a melodic line with various notes, including some with accents (^) and slurs. The bass staff contains a bass line with fewer notes. A large bracket underneath both staves spans from the beginning of measure 51 to the end of measure 52 and is labeled "Block A". The measure numbers "51" and "52" are written at the end of their respective staves.

Handwritten musical score for measures 53 and 54. The system consists of two staves: a treble clef staff on top and a bass clef staff on the bottom. The treble staff contains a melodic line with notes, some with accents (^) and slurs. The bass staff contains a bass line. A large bracket underneath both staves spans from the beginning of measure 53 to the end of measure 54 and is labeled "Block A". The measure numbers "53" and "54" are written at the end of their respective staves.

Handwritten musical score for measures 55 and 56. The system consists of two staves: a treble clef staff on top and a bass clef staff on the bottom. The treble staff contains a melodic line with notes, some with accents (^) and slurs. The bass staff contains a bass line. A large bracket underneath both staves spans from the beginning of measure 55 to the end of measure 56 and is labeled "Block B". The measure numbers "55" and "56" are written at the end of their respective staves.

Handwritten musical score for measures 57 and 58. The system consists of two staves: a treble clef staff on top and a bass clef staff on the bottom. The treble staff contains a melodic line with notes, some with accents (^) and slurs. The bass staff contains a bass line. A large bracket underneath both staves spans from the beginning of measure 57 to the end of measure 58 and is labeled "Block A". The measure numbers "57" and "58" are written at the end of their respective staves.

Handwritten musical score for measures 55 and 56. The system includes a treble clef staff with a key signature of one sharp (F#) and a bass clef staff. The treble staff contains a melodic line with a slur over measures 55 and 56, and a 'Pedal' marking. The bass staff contains a rhythmic accompaniment. Measure 55 is marked with a '55' at the end. Measure 56 is marked with a '56' at the end.

Handwritten musical score for measures 57 and 58. The system includes a treble clef staff with a key signature of one sharp (F#) and a bass clef staff. The treble staff contains a melodic line with a slur over measures 57 and 58, and a 'Pedal' marking. The bass staff contains a rhythmic accompaniment. Measure 57 is marked with a '57' at the end. Measure 58 is marked with a '58' at the end.

Handwritten musical score for measures 59 and 60. The system includes a treble clef staff with a key signature of one sharp (F#) and a bass clef staff. The treble staff contains a melodic line with a slur over measures 59 and 60, and a 'Pedal' marking. The bass staff contains a rhythmic accompaniment. Measure 59 is marked with a '59' at the end. Measure 60 is marked with a '60' at the end.

2.

ff

f

Pedal

57 58

pp

Pedal

fff

59 60

Lungu

60

61 62 63 64

20

Lento

4

61

Handwritten musical score for measures 61-62. The system includes a treble clef, a 4/4 time signature, and a key signature of one flat. The music features a melodic line in the treble clef and a complex accompaniment in the bass clef with many beamed notes. Performance markings include *pp*, *legg.*, and *pedal*. A large slur covers the first two measures.

62

Handwritten musical score for measures 62-63. The system continues with the treble and bass clefs. The melodic line continues with a slur. The bass clef accompaniment remains complex. Performance markings include *pp* and *pedal*.

63

Handwritten musical score for measures 63-64. The system continues with the treble and bass clefs. The melodic line continues with a slur. The bass clef accompaniment remains complex. Performance markings include *pp* and *pedal*.

64

Handwritten musical score for measures 64-65. The system continues with the treble and bass clefs. The melodic line continues with a slur. The bass clef accompaniment remains complex. Performance markings include *pp* and *pedal*. The system ends with a double bar line and a repeat sign.

21



frei - ruhig | Lento

65

Kleine G.p.

66

67

Flöte (Frey)

frei

ritato

Lento

25

ppp

22

Lento

Handwritten musical score for the first system, consisting of three staves. The top staff contains a melodic line with a slur and dynamic marking 'pp'. The middle staff has a series of notes with a dynamic marking 'pp' and the word 'Pedal' written below it. The bottom staff shows a bass line with notes and rests. The system is divided into two measures by a vertical bar line.

Handwritten musical score for the second system, consisting of three staves. The top staff features a complex melodic passage with slurs and dynamic markings 'pp' and 'f'. The middle staff continues with notes and rests. The bottom staff shows a bass line with notes and rests. The system is divided into two measures by a vertical bar line.

Handwritten musical score for the third system, consisting of three staves. The top staff has a melodic line with notes and slurs, ending with a circled measure number '69'. The middle staff contains notes and rests, with a 'FIN' marking at the end. The bottom staff shows a bass line with notes and rests. The system is divided into two measures by a vertical bar line.

Prestissimo

5

3/2 *pp* *arco*

Block B

Flöte *pp*  
Klar. *pp*

Block B

Bl. B

Block B

Block B

Block B

www.musicalscore.com

Handwritten musical score for measures 74-76. The system consists of three staves. The top staff is in treble clef, the middle in alto clef, and the bottom in bass clef. Measure 74 shows a complex texture with many notes in the treble and bass staves, and a few notes in the alto staff. Measure 75 features a large bracketed chord in the alto staff. Measure 76 has a large bracketed chord in the bass staff. The number 76 is written at the end of the system.

Handwritten musical score for measures 77-78. The system consists of three staves. The top staff is in treble clef, the middle in alto clef, and the bottom in bass clef. Measure 77 shows a complex texture with many notes in the treble and bass staves, and a few notes in the alto staff. Measure 78 features a large bracketed chord in the alto staff. The number 78 is written at the end of the system.

Handwritten musical score for measures 79-80. The system consists of three staves. The top staff is in treble clef, the middle in alto clef, and the bottom in bass clef. Measure 79 shows a complex texture with many notes in the treble and bass staves, and a few notes in the alto staff. Measure 80 features a large bracketed chord in the alto staff. The number 79 is written at the end of the system.

Handwritten musical score for measures 81-82. The system consists of three staves. The top staff is in treble clef, the middle in alto clef, and the bottom in bass clef. Measure 81 shows a complex texture with many notes in the treble and bass staves, and a few notes in the alto staff. Measure 82 features a large bracketed chord in the alto staff. The number 82 is written at the end of the system. The number 25 is written at the bottom right of the page.

Prestissimo (legg.)

6

Handwritten musical score for the first system, measures 1-2. It features three staves: a treble clef staff with a 4/4 time signature, a middle treble clef staff, and a bass clef staff. The first measure is mostly rests. The second measure contains notes with a slur and a fermata over the final note. Dynamics include 'p' and 'f'.

Handwritten musical score for the second system, measures 3-5. The first staff has a treble clef and contains a series of chords with accidentals. The second and third staves have treble and bass clefs respectively. Dynamics include 'f'.

Handwritten musical score for the third system, measures 6-8. The first staff has a treble clef and contains a series of chords with accidentals. The second and third staves have treble and bass clefs respectively. Dynamics include 'f'.

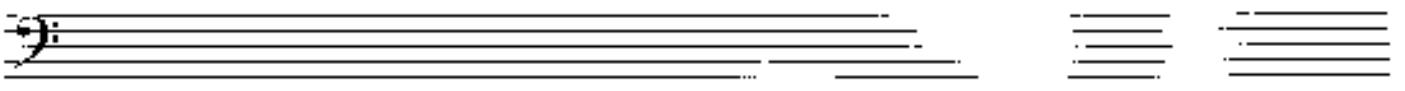
Handwritten musical score for the fourth system, measures 9-11. The first staff has a treble clef and contains a series of chords with accidentals. The second and third staves have treble and bass clefs respectively. Dynamics include 'f'. A circled '80' is at the end of the system.

Handwritten musical score, first system. It consists of three staves. The top staff is in treble clef with a key signature of one sharp (F#) and contains a complex melodic line with many sixteenth notes and slurs. The middle staff is in bass clef and contains a few notes, with the word "Pedal" written above it. The bottom staff is in bass clef and contains a melodic line with slurs and dynamic markings like *p*.

Handwritten musical score, second system. It consists of three staves. The top staff continues the melodic line from the first system. The middle staff contains rhythmic markings and the word "Pedal" circled in a circle. The bottom staff continues the melodic line with various dynamics and slurs.

Handwritten musical score, third system. It consists of three staves. The top staff features a melodic line with a dynamic marking of *f*. The middle staff contains rhythmic markings and the word "Pedal" written below it. The bottom staff continues the melodic line with slurs and dynamics.

Handwritten musical score, fourth system. It consists of three staves. The top staff has a melodic line with slurs and dynamics. The middle staff contains rhythmic markings and the word "Pedal" written below it. The bottom staff continues the melodic line. A circled number "82" is at the end of the system. At the bottom center, there is a page number "30".



Handwritten musical notation for measures 81 and 82. The system consists of two staves. The upper staff is in treble clef with a key signature of one sharp (F#) and a time signature of 2/4. It contains eighth notes and quarter notes with accents. The lower staff is in bass clef and contains chords with stems pointing upwards. A circled number '83' is written at the end of the system.

Handwritten musical notation for measures 83 and 84. The system consists of two staves. The upper staff is in treble clef with a key signature of one sharp (F#) and a time signature of 2/4. It contains eighth notes and quarter notes with accents. The lower staff is in bass clef and contains chords with stems pointing upwards. A circled number '84' is written at the end of the system.

Handwritten musical notation for measures 85 and 86. The system consists of two staves. The upper staff is in treble clef with a key signature of one sharp (F#) and a time signature of 3/8. It contains eighth notes and quarter notes with accents. The lower staff is in bass clef and contains chords with stems pointing upwards. A circled number '85' is written at the end of the system.

Handwritten musical notation for measures 87 and 88. The system consists of two staves. The upper staff is in treble clef with a key signature of one sharp (F#) and a time signature of 2/4. It contains eighth notes and quarter notes with accents. The lower staff is in bass clef and contains chords with stems pointing upwards. A circled number '87' is written at the end of the system.

Handwritten musical notation for measures 89 and 90. The system consists of two staves. The upper staff is in treble clef with a key signature of one sharp (F#) and a time signature of 2/4. It contains eighth notes and quarter notes with accents. The lower staff is in bass clef and contains chords with stems pointing upwards. A circled number '89' is written at the end of the system.

Handwritten musical score for the first system, measures 85-86. It features a treble clef, a 3/4 time signature, and a key signature of one sharp (F#). The notation includes a melodic line with slurs and accents, and a bass line with chords and a circled 'B' in the second measure. Dynamics include 'pp' and 'f'.

Handwritten musical score for the second system, measures 87-90. It features a treble clef, a 4/4 time signature, and a key signature of one sharp (F#). The notation includes a melodic line with slurs and accents, and a bass line with chords and a circled 'B' in the second measure. Dynamics include 'pp', 'f', and 'Pedale'.

Handwritten musical score for the third system, measures 91-94. It features a treble clef, a 4/4 time signature, and a key signature of one sharp (F#). The notation includes a melodic line with slurs and accents, and a bass line with chords and a circled 'B' in the second measure. Dynamics include 'ff'.

Handwritten musical score for the fourth system, measures 95-98. It features a treble clef, a 4/4 time signature, and a key signature of one sharp (F#). The notation includes a melodic line with slurs and accents, and a bass line with chords and a circled 'B' in the second measure. Dynamics include 'p' and 'pp'. A circled '87' is in the top right corner.



(legg.)

Handwritten musical score for the first system, measures 1-3. The music is in 4/4 time. The first measure is a whole rest. The second measure contains a melodic line in the upper voice with notes G4, A4, B4, C5, and a dynamic marking *p*. The lower voices provide harmonic support. The third measure features a melodic line with notes B4, A4, G4, F4, E4, D4, C4, and a dynamic marking *p*. A slur is placed over the notes B4, A4, G4, F4, E4, D4, C4.

Handwritten musical score for the second system, measures 4-6. The music continues in 4/4 time. The first measure has a melodic line with notes G4, A4, B4, C5, B4, A4, G4, F4, E4, D4, C4, and a dynamic marking *pp*. The second measure has a melodic line with notes G4, A4, B4, C5, B4, A4, G4, F4, E4, D4, C4, and a dynamic marking *pp*. The third measure has a melodic line with notes G4, A4, B4, C5, B4, A4, G4, F4, E4, D4, C4, and a dynamic marking *pp*.

Handwritten musical score for the third system, measures 7-9. The music continues in 4/4 time. The first measure has a melodic line with notes G4, A4, B4, C5, B4, A4, G4, F4, E4, D4, C4, and a dynamic marking *f*. The second measure has a melodic line with notes G4, A4, B4, C5, B4, A4, G4, F4, E4, D4, C4, and a dynamic marking *f*. The third measure has a melodic line with notes G4, A4, B4, C5, B4, A4, G4, F4, E4, D4, C4, and a dynamic marking *f*.

Handwritten musical score for the fourth system, measures 10-12. The music continues in 4/4 time. The first measure has a melodic line with notes G4, A4, B4, C5, B4, A4, G4, F4, E4, D4, C4, and a dynamic marking *f*. The second measure has a melodic line with notes G4, A4, B4, C5, B4, A4, G4, F4, E4, D4, C4, and a dynamic marking *f*. The third measure has a melodic line with notes G4, A4, B4, C5, B4, A4, G4, F4, E4, D4, C4, and a dynamic marking *f*. A circled number 29 is written at the end of the system.

frei - ruhig | Lento

Handwritten musical score for the first system. The top staff is in treble clef, showing a melodic line with notes and rests. The bottom staff is a grand staff (piano) with notes and rests. The tempo is marked "Lento" and "frei - ruhig". Dynamics include "p" and "f".

Handwritten musical score for the second system. The top staff is in treble clef, showing a melodic line with notes and rests. The bottom staff is a grand staff (piano) with notes and rests. The tempo is marked "Lento" and "frei - ruhig". Dynamics include "p" and "f".

Flöte (frei)

Handwritten musical score for the third system. The top staff is in treble clef, showing a melodic line with notes and rests. The tempo is marked "Lento" and "frei - ruhig". Dynamics include "p" and "f".

frei

rubato

Lento

Handwritten musical score for the fourth system. The top staff is in treble clef, showing a melodic line with notes and rests. The bottom staff is a grand staff (piano) with notes and rests. The tempo is marked "Lento" and "frei - ruhig". Dynamics include "p" and "ppp".

Handwritten musical score for the first system, measures 87-89. It features three staves: a treble staff with a melodic line and a fermata, a middle staff with chords, and a bass staff with a bass line. Dynamics include 'ff' and 'f'.

Handwritten musical score for the second system, measures 90-92. It features three staves. Measure 90 is circled with the number '90'. The treble staff has a melodic line with a fermata, and the bass staff has a bass line. Dynamics include 'ff'.

Handwritten musical score for the third system, measures 93-95. It features two staves. The top staff is marked 'Soco' and '2'. The bottom staff is marked '4'. The music consists of rhythmic patterns in both staves.

Handwritten musical score for the fourth system, measures 96-98. It features two staves with rhythmic patterns and chords.

Handwritten musical score for the fifth system, measures 99-101. It features two staves. Measure 101 is circled with the number '101'. The music includes chords and a melodic line. Dynamics include 'ff'.

www.musicalnotation.com

Handwritten musical score for the first system. It consists of three staves. The top staff is in treble clef with a key signature of one sharp (F#) and a common time signature (C). It begins with a dynamic marking of *pp* and contains a series of sixteenth-note runs. The middle staff is a grand staff (treble and bass clefs) with a *Pedal* marking and *pp* dynamic, showing sustained chords. The bottom staff is in bass clef with a key signature of one sharp and a common time signature, featuring a melodic line with some rests.

Handwritten musical score for the second system. It consists of three staves. The top staff is in treble clef with a key signature of one flat (Bb) and a common time signature. It contains sixteenth-note runs and a dynamic marking of *mf*. The middle staff is a grand staff with a *Pedal* marking and *mf* dynamic, showing sustained chords. The bottom staff is in bass clef with a key signature of one flat and a common time signature, featuring a melodic line.

Handwritten musical score for the third system. It consists of three staves. The top staff is in treble clef with a key signature of one sharp and a common time signature. It contains sixteenth-note runs and a dynamic marking of *f*. The middle staff is a grand staff with a *Pedal* marking and *f* dynamic, showing sustained chords. The bottom staff is in bass clef with a key signature of one sharp and a common time signature, featuring a melodic line. A circled number "92" is in the right margin.

Handwritten musical score for the fourth system. It consists of three staves. The top staff is in treble clef with a key signature of one flat and a common time signature. It contains sixteenth-note runs and a dynamic marking of *f*. The middle staff is a grand staff with a *Pedal* marking and *f* dynamic, showing sustained chords. The bottom staff is in bass clef with a key signature of one flat and a common time signature, featuring a melodic line. A circled number "93" is in the right margin. At the bottom of the page, the number "32" is written.

Handwritten musical score for the first system, measures 81-84. It features three staves: piano (p), violin (v), and cello/contrabass (c). The piano part has a 3/8 time signature and includes a circled 'A' in the third measure. The violin and cello parts have various dynamics like 'pp' and 'p'.

Handwritten musical score for the second system, measures 85-88. It features three staves. The piano part has a 4/4 time signature. The violin part includes a 'Pedal' instruction with a long horizontal line. The cello part has a 'p' dynamic.

Handwritten musical score for the third system, measures 89-92. It features three staves. The piano part has a 2/4 time signature and includes a 'ff' dynamic. The violin part has a 'ff' dynamic. The cello part has a 'ff' dynamic.

Handwritten musical score for the fourth system, measures 93-95. It features three staves. The piano part has a 4/4 time signature. The violin part has a 'p' dynamic. The cello part has a 'p' dynamic. A circled '95' is in the top right corner.

Handwritten musical score for the first system, measures 94-96. It features three staves: a top staff with a treble clef and a first ending bracket, a middle staff with a treble clef, and a bottom staff with a bass clef. The music includes various notes, rests, and dynamic markings such as  $f$  and  $mf$ . A circled number 96 is at the end of the system.

Handwritten musical score for the second system, measures 97-99. It features three staves: a top staff with a treble clef, a middle staff with a treble clef, and a bottom staff with a bass clef. The music includes various notes, rests, and dynamic markings such as  $f$  and  $ff$ . A circled number 96 is at the end of the system.

Handwritten musical score for the third system, measures 100-102. It features two staves: a top staff with a treble clef and a bottom staff with a bass clef. The word "Saxo" is written above the top staff. The music includes various notes, rests, and dynamic markings.

Handwritten musical score for the fourth system, measures 103-105. It features two staves: a top staff with a treble clef and a bottom staff with a bass clef. The music includes various notes, rests, and dynamic markings.

Handwritten musical score for the fifth system, measures 106-108. It features two staves: a top staff with a treble clef and a bottom staff with a bass clef. The music includes various notes, rests, and dynamic markings. A circled number 97 is at the end of the system. The number 38 is written at the bottom center of the page.

Bass clef lines at the top of the page.

Handwritten musical notation, first system. Treble clef, 2/4 time signature, key signature of one sharp (F#). Includes notes, rests, and dynamic markings like *mf*.

Handwritten musical notation, second system. Treble clef, 2/4 time signature. Includes notes, rests, and dynamic markings like *mf*.

Handwritten musical notation, third system. Treble clef, 3/8 time signature. Includes notes, rests, and dynamic markings like *mf* and *dim*.

Handwritten musical notation, fourth system. Treble clef, 2/4 time signature. Includes notes, rests, and dynamic markings like *mf*.

Handwritten musical notation, fifth system. Treble clef, 4/4 time signature. Includes notes, rests, and dynamic markings like *mf* and *ff*. Ends with a circled number 99 and the text "fast attacca →".

98

99

35

39

fast attacca →

Mod.

7

100

kl.

nicht schlappend -

G.  
P.

pesante

4

36



Handwritten musical score for measures 99-101. The score is in treble and bass clefs. Measure 99 has a dynamic marking *mf*. Measure 100 has a circled *f*. Measure 101 has a circled *f*. The bass line includes chord diagrams for measures 99 and 101.

102

Handwritten musical score for measures 102-103. The score is in treble and bass clefs. Measure 102 has a circled *Pedal (3)*. Measure 103 has a circled *Pedal (3)*. The bass line includes chord diagrams for measures 102 and 103.

103

Handwritten musical score for measures 104-105. The score is in treble and bass clefs. Measure 104 has a circled *Pedal*. Measure 105 has a circled *Pedal*. The bass line includes chord diagrams for measures 104 and 105.

37



Prestissimo

8

(Variation)

107

Handwritten musical score for the first system, labeled "KARAK" vertically on the left. It features a treble clef and a 3/2 time signature. The tempo marking "Prestissimo" is at the top left, and "legg." is written above the first measure. The music consists of a single melodic line with various accidentals (flats, naturals, sharps) and slurs. A bracket labeled "Block B" spans the first two measures. The page number "107" is in the top right corner.

Handwritten musical score for the second system, labeled "Flöte" and "Klav." vertically on the left. It features a treble clef. The music consists of two staves: the upper staff for the flute and the lower staff for the piano. Both staves have dynamic markings "pp" and "fp". A bracket labeled "Block B" spans the first two measures. The page number "108" is in the top right corner.

Handwritten musical score for the third system, labeled "Flöte" and "Klav." vertically on the left. It features a treble clef. The music consists of two staves. The upper staff has dynamic markings "p" and "fp". A bracket labeled "Bl. B" spans the first two measures. The page number "109" is in the top right corner.

Handwritten musical score for the fourth system, labeled "Flöte" and "Klav." vertically on the left. It features a treble clef. The music consists of two staves. The upper staff has dynamic markings "p" and "f". A bracket labeled "Block B" spans the first two measures. The page number "110" is in the top right corner.

Handwritten musical score for the fifth system, labeled "Flöte" and "Klav." vertically on the left. It features a treble clef. The music consists of two staves. A bracket labeled "Block B" spans the first two measures. The page number "111" is in the top right corner.

Handwritten musical score for the sixth system, labeled "Flöte" and "Klav." vertically on the left. It features a treble clef. The music consists of two staves. The upper staff has dynamic markings "ff" and "f". A bracket labeled "Block B" spans the first two measures. The page number "112" is in the top right corner, and "39" is written at the bottom right.

www.musicalscore.com

Handwritten musical score for measures 111-112. The system consists of three staves: Treble, Alto, and Bass. Measure 111 shows a complex melodic line in the Treble staff with many accidentals, and block chords in the other staves. Measure 112 continues the melodic line and features a large bracketed chord in the Alto staff.

Handwritten musical score for measures 113-114. The system consists of three staves. Measure 113 shows a melodic line in the Treble staff and block chords in the other staves. Measure 114 features a melodic line in the Treble staff and block chords in the other staves, with a wavy line above the Treble staff indicating a tremolo or vibrato effect.

Handwritten musical score for measures 115-116. The system consists of three staves. Measure 115 shows a melodic line in the Treble staff and block chords in the other staves. Measure 116 features a melodic line in the Treble staff and block chords in the other staves, with a wavy line above the Treble staff and the word "Pedal" written below the Bass staff.

Handwritten musical score for measures 117-118. The system consists of three staves. Measure 117 shows a melodic line in the Treble staff and block chords in the other staves. Measure 118 features a melodic line in the Treble staff and block chords in the other staves, with a wavy line above the Treble staff and the word "Pedal" written below the Bass staff. The system ends with a double bar line and the number "40" written below.

Handwritten musical score for measures 116-117. The system includes a treble clef with a circled '2' and a bass clef. The tempo marking 'furioso' is written above the staff, and 'subito' is written below it. The music features complex chordal textures with many accidentals and dynamic markings such as 'ff' and '>'. Pedal markings are present below the bass staff.

Handwritten musical score for measures 117-118. The system includes a treble clef and a bass clef. The music continues with complex textures, including a circled '2' in the treble clef. Dynamic markings like 'ff' and '>' are used throughout. Pedal markings are visible below the bass staff.

Handwritten musical score for measures 118-119. The system includes a treble clef with a circled '2' and a bass clef. The tempo marking 'Pedal' is written above the treble staff. Dynamic markings include 'pp' and 'f'. The music features complex textures with many accidentals and dynamic markings.

Handwritten musical score for measures 119-120. The system includes a treble clef with a circled '2' and a bass clef. The tempo marking 'no hair (stacc.)' is written above the treble staff. The music features complex textures with many accidentals and dynamic markings. Pedal markings are present below the bass staff.

Bass clef symbol

Handwritten musical score for measures 119-120. The score consists of three staves. The top staff has a treble clef and a melodic line with a slur and accents. The middle staff has a treble clef and chords. The bottom staff has a bass clef and a bass line. Measure 119 includes a 'p' dynamic marking. Measure 120 includes a 'ff' dynamic marking and a 'dim' marking. The page number '120' is written in the top right corner.

Bass clef symbol

Handwritten musical score for measures 121-123. The score consists of three staves. The top staff has a treble clef and a melodic line with a slur and accents. The middle staff has a treble clef and chords. The bottom staff has a bass clef and a bass line. Measure 121 includes a 'f' dynamic marking. Measure 122 includes a 'ff' dynamic marking. Measure 123 includes a 'ff' dynamic marking. The page number '121' is written in the top right corner.

Bass clef symbol

Handwritten musical score for measures 124-126. The score consists of three staves. The top staff has a treble clef and a melodic line with a slur and accents. The middle staff has a treble clef and chords. The bottom staff has a bass clef and a bass line. Measure 124 includes a 'Pedal' marking. Measure 125 includes a '4/6' time signature. Measure 126 includes a '42' marking. The page number '121' is written in the top right corner.

Vertical text on the left margin: 121

frei - ruhig | Lento

Handwritten musical score for the first system. It consists of three staves. The top staff is for a piano (p), with notes and dynamics like *p* and *f*. The middle staff is for a string section, with notes and dynamics like *pp*, *p*, and *fff*. The bottom staff is for another string section, with notes and dynamics like *pp*, *p*, and *fff*. There are various markings such as accents, slurs, and dynamic changes throughout the system.

122

Handwritten musical score for the second system. It consists of three staves. The top staff is for a piano (p), with notes and dynamics like *p* and *f*. The middle staff is for a string section, with notes and dynamics like *pp*, *p*, and *fff*. The bottom staff is for another string section, with notes and dynamics like *pp*, *p*, and *fff*. There are various markings such as accents, slurs, and dynamic changes throughout the system.

Flöte (frei) (mit Ha D)

Handwritten musical score for the flute part. It consists of a single staff with notes and dynamics like *p* and *f*. There are various markings such as accents, slurs, and dynamic changes throughout the system.

123

Handwritten musical score for the third system. It consists of three staves. The top staff is for a piano (p), with notes and dynamics like *p* and *f*. The middle staff is for a string section, with notes and dynamics like *pp*, *p*, and *fff*. The bottom staff is for another string section, with notes and dynamics like *pp*, *p*, and *fff*. There are various markings such as accents, slurs, and dynamic changes throughout the system.

Lunga

43