

L.v. BEETHOVEN



W.A. MOZART



NOTENHEFT

F. SCHUBERT



J. HAYDN



J. STRAUSS



Konzert für Fagott und

Fagott Solo ganz frei

Vibraphon (mit Verstärkeranlage) (dazu Streichen aufhänge)

flüchtig

Vibraphon
Pedal
ppp < f > ppp

vibrato (♩) (frei)

pp < (frei) - > > ppp

mit viel Ausdruck! (vibrato)

pp < > ppp

legg. (frei)

pp < > ppp

ovvagh (frei)

(1) ovvagh

Pedal *ff*

(1)

pp

ff

ppp Streicherakkord

ff (ovvagh →)

> mit/din

pp

Lento (wie im Choral)

pp Str. FKK. *pp*

Ruhig (deutlich!)

Pedal

Vibraphon (leise) schwebend -
aber jeder Ton sehr
bewußt angeschlagen)

Schr ruhig
Vibrato (♩)

5
8
pp =
Pedal

Vibrato (♩)

pp =
p

fp =
p

fp

Handwritten musical score for the first system. The top staff is in treble clef and contains a melodic line with notes and rests. The bottom staff is in bass clef and contains a bass line with notes and rests. Dynamic markings include *pp* and *p*. A circled *p* is present at the beginning of the bass line. A *Pedal* instruction with a circled *p* is written at the end of the system.

Handwritten musical score for the second system. The top staff is in treble clef and contains a melodic line with notes and rests. The bottom staff is in bass clef and contains a bass line with notes and rests. Dynamic markings include *pp*. A *Pedal* instruction with a bracket is written below the bass line.

Handwritten musical score for the third system. The top staff is in treble clef and contains a melodic line with notes and rests. Dynamic markings include *pp*. The text *Streichen akkord* is written above the staff.

Handwritten musical score for the fourth system. The top staff is in treble clef and contains a melodic line with notes and rests. The bottom staff is in bass clef and contains a bass line with notes and rests. Dynamic markings include a circled *p* at the beginning and a circled *p* at the end of the system.

Handwritten musical score for the fifth system. The top staff is in treble clef and contains a melodic line with notes and rests. The bottom staff is in bass clef and contains a bass line with notes and rests. Dynamic markings include *pp*. A *Pedal* instruction is written below the bass line.

Handwritten musical notation for the first system. The upper staff (bass clef) contains notes with various accidentals and dynamics. The lower staff (treble clef) contains a series of notes with a 'Pedal' marking below it. A large bracket spans across the system.

Handwritten musical notation for the second system. The upper staff (bass clef) contains notes with accidentals and dynamics. The lower staff (treble clef) contains notes with a 'Pedal' marking below it. A box labeled 'pp STA. RIK.' is present above the upper staff.

Handwritten musical notation for the third system. The upper staff (bass clef) contains notes with accidentals and dynamics. The lower staff (treble clef) contains notes with a 'Pedal' marking below it. A circled 'Ped. aus' is written at the end of the system.

Handwritten musical notation for the fourth system. The upper staff (bass clef) contains notes with accidentals and dynamics. The lower staff (treble clef) contains notes with a 'Pedal' marking below it. The word 'Presto' is written above the staff, and 'freis' is written to the left. A box labeled 'Pedal' is written below the lower staff.

(frei) (♩) (sehr frei - zart - ruhig)

breit - frei

sehr ruhig

(poco rit.)

breit (Vibrato) (frei)

(#) appoggiatura

rit + dim

p >

pp

Kleine G.P. //

(Ausklang — mit großer Ruhe)

Vibraphon (♩) Solo (mit Ruhe) — (♩)
Canto

5/8 pp <

Pedal (schwebend)

p <

pp

Streicherakkord

5/16 pp < schwebend betont >

pppp Pedal aus

Canto (♩)

Pedal

pppp

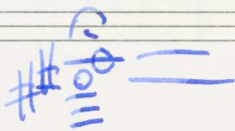
Contra!!

Fin

In Teil 1 Streicherakkord = (und Teil 2)

dieser Akkord wird immer durch geziehen eingesetzt. (Über Tonband) —

Dieser Akkord besteht aus:



Streicherakkord

Viol. I pp $\begin{matrix} 8 \\ 7 \end{matrix}$

Viol. II pp $\begin{matrix} 7 \\ 6 \end{matrix}$

Viola mp $\begin{matrix} 6 \\ 5 \end{matrix}$

Bratsch. I pp $\begin{matrix} 6 \\ 5 \end{matrix}$

Bratsch. II pp $\begin{matrix} 7 \\ 6 \end{matrix}$

Cello mp $\begin{matrix} 7 \\ 6 \end{matrix}$

Celli mp $\begin{matrix} \# \\ 6 \\ 5 \end{matrix}$

Baß mp $\begin{matrix} 6 \\ 5 \\ 4 \end{matrix}$

Dieser Akkord wird auf Tonband aufgenommen —

mit sehr viel Hall —

(und bei Teil 1) auf geziehen! eingebildet. —

dieser Akkord auch für Teil 2 auf geziehen!

Teil [2]

bewegt (bewegt) Presto - leidenschaftlich bewegt

pp Stm. AKK. $\leftarrow \# \rightarrow ppp$

(sehr solistisch! — vokal rhythmisch

Fagott

sehr solistisch! — vokal rhythmisch

↑ sehr lastisch — rhythmisch botank — bewegph →

Pedal

Pedal nicht Tremolo

Ped. aus

stacc.

p

pp Streich. AKK.

Handwritten musical notation for the first system. The top staff is in treble clef and contains a melodic line with notes and accidentals. The bottom staff is in bass clef and contains a bass line with notes and accidentals. A bracket above the top staff indicates a dynamic of *pp* and the text "Streich. AKK." is written above it.

Handwritten musical notation for the second system. The top staff continues the melodic line. The bottom staff features a circled chord symbol $\text{F}\sharp\text{C}\text{E}\text{G}$ with an arrow pointing to the first measure, and a bracket labeled "Pedal" below it. The system concludes with a circled chord symbol $\text{F}\sharp\text{C}\text{E}\text{G}$ and the text "Ped. aus" (Pedal out).

Handwritten musical notation for the third system. The top staff continues the melodic line with notes and accidentals. The bottom staff features a circled chord symbol $\text{F}\sharp\text{C}\text{E}\text{G}$ with an arrow pointing to the first measure, and a bracket labeled "Pedal" below it. The system concludes with a circled chord symbol $\text{F}\sharp\text{C}\text{E}\text{G}$ and the text "Ped. aus" (Pedal out).

Handwritten musical notation for the fourth system. The top staff continues the melodic line. The bottom staff features a circled chord symbol $\text{F}\sharp\text{C}\text{E}\text{G}$ with an arrow pointing to the first measure, and a bracket labeled "Pedal" below it. The system concludes with a circled chord symbol $\text{F}\sharp\text{C}\text{E}\text{G}$ and the text "Ped. aus" (Pedal out).

(auf 1)

5/8 kant (stacc.)

7M

Pedal

Pedal

fpp Str. FK Kond — \rceil pp 27

Pedal

3/8

dim

p

pp

G.P.

Pedal aus

frei / sehr ruhig / Vibrato

mit viel Hall

legg.

D.C.
Satz 2 / ab
Coda

CODA

Pedale

Streich. Akkord

ff > pp

(stacc.) sehr hart!!

(stärkstes Vibramto!! → Fagott - Solo

STR. BKK.

fff

(pp) Streicher FK Kond

ppp. Streich. Akkord > >> -

fagot

Pedal aus

~~ohne~~ Pedal (hart) mit

Mein menta Kollegen (Magome) stark)

Gedichtmet. A. Scherbaum

Adolf Scherbaum

N.B.

Jeder Solist (ein eigenes Mikrofon)
 angeschlossen an Verstärkeranlage -
 Lautsprecher im Konzertsaal verteilt. -
 (Viel Hall!!) -
 Den Tontechnikern freihand -
 es können auch Spezialeffekte eingebaut
 werden - (ad. Zib.) -
 Im Mittelpunkt die beiden Solisten. -

1985 Adolf Scherbaum
 Luis Hauptstr. 35/9/