

L.v. BEETHOVEN



W.A. MOZART



# NOTENHEFT

*6 Klavierstücke  
L. Scherzino  
1986  
München*

F. SCHUBERT



J. HAYDN



J. STRAUSS



1

marcato

Handwritten musical notation for the first system. The treble staff contains a melodic line with slurs and accents. The bass staff contains a rhythmic accompaniment with eighth notes. A dynamic marking 'f' is present. The system concludes with a double bar line.

Handwritten musical notation for the second system. It includes a first ending (circled 1) and a second ending (circled 2). The notation continues with melodic and rhythmic elements in both staves.

Handwritten musical notation for the third system. It includes a third ending (circled 3) and a fourth ending (circled 4). The notation continues with melodic and rhythmic elements in both staves.

Handwritten musical notation for measures 18 and 19. Measure 18 contains two staves with chords and a melodic line. Measure 19 contains two staves with chords and a melodic line. Measure numbers 18 and 19 are circled.

Handwritten musical notation for measures 20 and 21. Measure 20 contains two staves with chords and a melodic line. Measure 21 contains two staves with chords and a melodic line. Measure numbers 20 and 21 are circled.

Handwritten musical notation for measures 22 and 23. Measure 22 contains two staves with chords and a melodic line. Measure 23 contains two staves with chords and a melodic line. Measure numbers 22 and 23 are circled.

Handwritten musical notation for measures 24 and 25. Measure 24 contains two staves with chords and a melodic line. Measure 25 contains two staves with chords and a melodic line. Measure numbers 24 and 25 are circled.

Handwritten musical notation for measures 26 and 27. Measure 26 contains two staves with chords and a melodic line. Measure 27 contains two staves with chords and a melodic line. Measure numbers 26 and 27 are circled.

2

ruhig (frei)

Handwritten musical notation for the first system. It begins with a treble clef and a common time signature (C). The melody starts with a quarter note, followed by a series of eighth notes under a slur. An accent mark (>) is placed above the final note of the phrase. The system ends with a double bar line.

Handwritten musical notation for the second system. It features a bass clef on the left and a treble clef on the right. The bass line contains several notes, some with slurs. The treble line has a melodic phrase starting with a circled number 1 (①) above the first measure. The system concludes with a double bar line.

Handwritten musical notation for the third system. It contains a treble clef and a bass clef. The treble line has a melodic line with a slur and an accent mark. A circled number 2 (②) is placed above the first measure of this phrase. The bass line has a few notes. A circled number 3 (③) is placed above the final measure of the system. The system ends with a double bar line.

Handwritten musical notation for the fourth system. It includes a treble clef and a bass clef. The treble line has a melodic phrase with a slur and an accent mark. A circled number 4 (④) is placed above the first measure of this phrase. The bass line has a few notes. The system ends with a double bar line.

breit (passionata)

Handwritten musical notation for the first system, including staves with notes, rests, and dynamic markings. Circled numbers 1, 2, and 3 are present.

breit

Handwritten musical notation for the second system, including staves with notes, rests, and dynamic markings. Includes the word 'ritard' at the bottom left.

breit/nicht  
schlappend

①

②

(26+ poco rit...) D.C.  
al ♯

③

ritardi

(Cillo Colono)

ada awal

Handwritten musical notation on a five-line staff. The key signature is one flat (B-flat) and the time signature is 4/4. The notation includes a treble clef, a key signature signature, and a time signature signature. The first measure contains a complex melodic line with many notes and accidentals. The second measure contains a whole note chord with a sharp sign above it. The third measure contains a whole note chord with a sharp sign above it. The fourth measure contains a whole note chord with a sharp sign above it. The piece ends with a double bar line.

Handwritten musical notation on a five-line staff, marked with a circled 1. It features a treble clef, a key signature signature, and a time signature signature. The first measure contains a melodic line with a slur over it. The second measure contains a melodic line with a slur over it. The third measure contains a melodic line with a slur over it. The fourth measure contains a melodic line with a slur over it. The piece ends with a double bar line.

Handwritten musical notation on a five-line staff, marked with a circled 2. It features a treble clef, a key signature signature, and a time signature signature. The first measure contains a melodic line with a slur over it. The second measure contains a melodic line with a slur over it. The third measure contains a melodic line with a slur over it. The fourth measure contains a melodic line with a slur over it. The piece ends with a double bar line.

Handwritten musical notation on a five-line staff, marked with a circled 3. It features a treble clef, a key signature signature, and a time signature signature. The first measure contains a melodic line with a slur over it. The second measure contains a melodic line with a slur over it. The third measure contains a melodic line with a slur over it. The fourth measure contains a melodic line with a slur over it. The piece ends with a double bar line.

Handwritten musical notation on a five-line staff, marked with a circled 4. It features a treble clef, a key signature signature, and a time signature signature. The first measure contains a melodic line with a slur over it. The second measure contains a melodic line with a slur over it. The third measure contains a melodic line with a slur over it. The fourth measure contains a melodic line with a slur over it. The piece ends with a double bar line.



Handwritten musical score, system 1. It consists of two staves. The top staff has a treble clef and a key signature of one flat (B-flat). The bottom staff has a bass clef and a key signature of one flat. The music is in 4/4 time. The first measure of the top staff is marked with a circled '5'. The second measure of the top staff is marked with a circled '6'. The bottom staff has a circled '6' at the end. The text 'D.C. mit 110' is written on the right side of the bottom staff, and '2. & dann weiter' is written below it.

Handwritten musical score, system 2. It consists of two staves. The top staff has a treble clef and a key signature of one flat. The bottom staff has a bass clef and a key signature of one flat. The music is in 4/4 time. The first measure of the top staff is marked with a circled '7'. The second measure of the top staff is marked with a circled '8'. The bottom staff has a circled '8' at the end.

Handwritten musical score, system 3. It consists of two staves. The top staff has a treble clef and a key signature of one flat. The bottom staff has a bass clef and a key signature of one flat. The music is in 4/4 time. The first measure of the top staff is marked with a circled '9'. The second measure of the top staff is marked with a circled '10'. The bottom staff has a circled '10' at the end.

Handwritten musical score, system 4. It consists of two staves. The top staff has a treble clef and a key signature of one flat. The bottom staff has a bass clef and a key signature of one flat. The music is in 4/4 time. The first measure of the top staff is marked with a circled '11'. The second measure of the top staff is marked with a circled '12'. The bottom staff has a circled '12' at the end.

rubig (fai)

Handwritten musical notation for the first system. It consists of two staves. The first staff has a treble clef and a common time signature. The second staff has a bass clef. The notation includes various notes, accidentals (sharps and naturals), and slurs. Circled numbers 1, 2, and 3 are placed above the staves to indicate specific measures or sections.

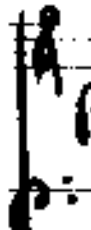
Handwritten musical notation for the second system. It consists of two staves. The first staff has a treble clef and a common time signature. The second staff has a bass clef. The notation includes various notes, accidentals, and slurs. Circled numbers 4, 5, and 6 are placed above the staves to indicate specific measures or sections.



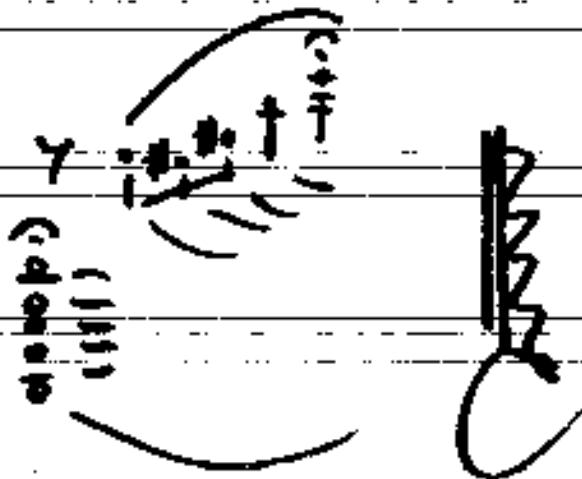
*p>*



*ritr.*



*Pedal*



⑥

ruhig (fazi)

Handwritten musical notation for measures 1 and 2. Measure 1 contains a treble clef, a common time signature, and a bass clef. The melody is written on a five-line staff with notes and rests. Measure 2 continues the melody with a fermata over the final note.

②

Handwritten musical notation for measures 3 and 4. Measure 3 continues the melody with a fermata. Measure 4 continues the melody with a fermata.

③

Handwritten musical notation for measures 5 and 6. Measure 5 continues the melody with a fermata. Measure 6 continues the melody with a fermata.

⑤

Handwritten musical notation for measures 7 and 8. Measure 7 continues the melody with a fermata. Measure 8 continues the melody with a fermata.

(rit) *ruhig*

Handwritten musical score for the first system. It consists of two staves. The top staff has a treble clef and a key signature of one flat. It contains a melodic line with notes, rests, and a circled '6' above a bar line. The bottom staff has a bass clef and contains a bass line with notes and rests. There are various performance markings like accents and slurs.

*lento* *(rit)*

Handwritten musical score for the second system. It consists of two staves. The top staff has a treble clef and a key signature of one flat. It contains a melodic line with notes, rests, and a circled '7' above a bar line. The bottom staff has a bass clef and contains a bass line with notes and rests. There are various performance markings like accents and slurs.

*colle*

Handwritten musical score for the third system. It consists of two staves. The top staff has a treble clef and a key signature of one flat. It contains a melodic line with notes, rests, and a circled '8' above a bar line. The bottom staff has a bass clef and contains a bass line with notes and rests. There are various performance markings like accents and slurs.

buit (Mod.) (assai)

frei rub.

Handwritten musical notation for the first system, featuring a treble clef, a common time signature (C), and a key signature of one flat (B-flat). The notation includes complex rhythmic patterns with many beamed notes and rests, and a double bar line at the end.

Handwritten musical notation for the second system, including a treble clef and a key signature of one flat. It features a series of notes with accents and slurs, and a circled number '2' at the end of the system.

Handwritten musical notation for the third system, including a treble clef and a key signature of one flat. It features a series of notes with accents and slurs, and a circled number '2' at the end of the system.

Handwritten musical notation for the fourth system, including a treble clef and a key signature of one flat. It features a series of notes with accents and slurs, and a circled number '3' at the end of the system.

Handwritten musical notation for the fifth system, including a treble clef and a key signature of one flat. It features a series of notes with accents and slurs, and a circled number '4' at the end of the system.

Handwritten musical notation on a five-line staff. The notation includes a treble clef, a key signature of one flat (B-flat), and a common time signature (C). The first measure contains a complex chord structure with a circled '5' above it. The second measure features a series of five chords, each marked with a circled '5' above it. The third measure contains a single chord with a circled '5' above it. The notation is dense and includes various accidentals and articulation marks.

Handwritten musical notation on a five-line staff. The notation includes a treble clef, a key signature of one flat (B-flat), and a common time signature (C). The first measure contains a complex chord structure with a circled '5' above it. The second measure features a series of five chords, each marked with a circled '5' above it. The third measure contains a single chord with a circled '5' above it. The notation is dense and includes various accidentals and articulation marks.

Handwritten musical notation on a five-line staff. The notation includes a treble clef, a key signature of one flat (B-flat), and a common time signature (C). The first measure contains a complex chord structure with a circled '5' above it. The second measure features a series of five chords, each marked with a circled '5' above it. The third measure contains a single chord with a circled '5' above it. The notation is dense and includes various accidentals and articulation marks.

Handwritten musical notation on a five-line staff. The notation includes a treble clef, a key signature of one flat (B-flat), and a common time signature (C). The first measure contains a complex chord structure with a circled '5' above it. The second measure features a series of five chords, each marked with a circled '5' above it. The third measure contains a single chord with a circled '5' above it. The notation is dense and includes various accidentals and articulation marks.