

L.v. BEETHOVEN



W.A. MOZART



NOTENHEFT

F. SCHUBERT



J. HAYDN



J. STRAUSS



5 Teile für Ensemble

1986

Adolf Scherbaum

1 Flöte (Altfl.)

1 Klarinette (B) in Partitur in C

1 Violine (Synthesizer)

1 Klavier

1 Baß

1 Schlagzeug (Vibraphon)

ruhig

Teil ①

①

②

Flöte

Klarin C

Viol.

Klarin

Faß

Schlagz

Fl.

Viol.

Klar.

Klarin

Faß

Schlagz

4

Teil 1a

5

6

Fl. *ff*

Klar. *ff*

Viol. *ff*

Handwritten musical score for measures 4-6, measures 5-6, and measure 6. The score is written for Flute (Fl.), Clarinet (Klar.), Violin (Viol.), and Cello/Double Bass. Dynamics include *ff* and *f*. The notation includes various notes, rests, and articulation marks.

tr. *ff*

tr. *ff*

tr. *ff*

tr. *ff*

Pedal

Handwritten musical score for measures 7-9, measures 8-9, and measure 9. The score is written for Trumpet (tr.), Trombone (tr.), and Cello/Double Bass. Dynamics include *ff* and *f*. The notation includes various notes, rests, and articulation marks, including a *Pedal* marking.

Teil 16

9

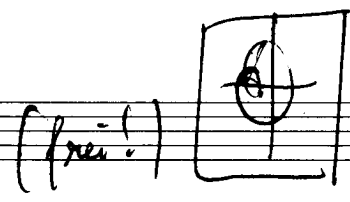
8

Handwritten musical score for measures 8 and 9. The score consists of five staves. Measure 8 contains various rhythmic and melodic figures with dynamic markings like *f* and *ff*. Measure 9 features a large slur over the top two staves, with the word "frei" written above. Below the staves, there are several boxes and lines, including a box labeled "Pedal (pp)" and another labeled "Elasten (dicht)".

Handwritten musical score for measures 10 and 11. The score consists of two staves labeled "Klar" and "Solo". Measure 10 starts with a "Lento" marking. Measure 11 includes a "(rit) dim" marking. Pedal markings are present on both staves. There are also some vertical lines and notes on the top staff.

Handwritten musical score for measures 12 and 13. The score consists of two staves. Measure 12 includes a "(rit) dim" marking. Measure 13 includes a "folgt Anfang" marking. Pedal markings are present on both staves. There are also some vertical lines and notes on the top staff.

Teil 1c



(frei!)

solo

Flü

Klav

Viola

Klav

Pedal

pp

Bass

Schlags. (Vibraphon)

Pedal

p

pp

Handwritten musical score for a chamber ensemble. The score includes staves for Flute (Flü), Clarinet (Klav), Viola, Piano (Klav), Bass, and Vibraphone (Schlags.). The Flute part features a 'solo' section with a melodic line and dynamic markings like 'p' and '>'. The Piano part includes a 'Pedal' section with 'pp' dynamics. The Vibraphone part has a rhythmic pattern with 'p' dynamics. The score is marked '(frei!)' and includes various performance instructions and dynamic markings.

Furioso (except)

Teil 2

1

Fl.

Klar.

Viol.

Klarinetten

Bas

Vibraphon + Schloß

2

Vibraphon Solo

4 4 4 4 4 4

Pedal

Presto) > dir

Teil (2a)

④

Klavier

Bass

Schlagz

⑤

⑥

ffp = 7 4 7 1 7 7 1 7 4 7 | 9 7 1

Handwritten musical score for measures 8-11. The score is written for five staves: Flute (Flü), Clarinet (Klar), Violin (Viol), Piano (Klav), Bass (Bass), and Cymbals (Schlags). The key signature is one sharp (F#). Measure 8 is circled with the number 8. The Flute part features a melodic line with accents and slurs. The Clarinet part is mostly rests with a handwritten note "wie Flöte". The Violin part has a melodic line with accents. The Piano part has chords with accents. The Bass part has a rhythmic pattern of eighth notes. The Cymbals part has a rhythmic pattern of eighth notes.

Handwritten musical score for measures 12-15. The score is written for five staves: Flute (Flü), Clarinet (Klar), Violin (Viol), Piano (Klav), Bass (Bass), and Cymbals (Schlags). The key signature is one sharp (F#). Measure 12 is circled with the number 9. The Flute part features a melodic line with accents and slurs. The Clarinet part has downward-pointing arrows. The Violin part has a melodic line with accents. The Piano part has chords with accents. The Bass part has a rhythmic pattern of eighth notes. The Cymbals part has a rhythmic pattern of eighth notes.

Handwritten musical score for the first system, measures 10-13. The score is written on six staves. Measure 10 is circled at the top. The notation includes various notes, rests, and dynamic markings such as f and ff . There are also some handwritten annotations like $\#$ and b above notes.

Handwritten musical score for the second system, measures 12-15. Measure 12 is circled at the top right. The notation includes notes, rests, and dynamic markings such as p , f , and fp . There are also some handwritten annotations like $\#$ and b above notes. At the bottom of the system, there are rhythmic patterns: $fp < 83 11$, $33 11$, $33 11$, and $2 7 7 7 2$.

Handwritten musical score for a piano piece, measures 13-15. The score is written on six staves. The first four staves are in treble clef, and the fifth is in bass clef. The bottom staff contains rhythmic notation with dynamics like *mf*, *ff*, and *dim*. A circled number '13' is in the top right corner. The notation includes various notes, rests, and dynamic markings such as *mf*, *ff*, *dim*, and *p*. A 'Pedal' marking is present on the fourth staff.

Handwritten musical score for a bass solo, measures 14-15. The first staff is in bass clef and contains notes with dynamics like *f* and *f*. The second staff contains chords with dynamics like *ff* and a triplet of notes. A circled number '14' is in the top right corner of the first staff, and a circled number '15' is in the top right corner of the second staff.

Handwritten musical score for a Schlagwerk solo, measures 16-17. The staff is in treble clef and contains rhythmic notation with notes and rests. Dynamics include *mf*, *dim*, and *p*. A circled number '16' is in the top right corner.

Teil (2b)

Block (A) (4 Takte)

(17)

Klaviers
Baß
Schlag

Handwritten musical score for measures 17-20. The score is divided into three parts: Klaviers (Piano), Baß (Bass), and Schlag (Drums). Measure 17 starts with a piano dynamic (p) and features chords in the piano part and rhythmic patterns in the bass and drums. Measures 18-20 continue with similar rhythmic and harmonic structures, including accents and slurs. The piano part uses various chord voicings, and the bass part features eighth-note patterns. The drum part consists of simple rhythmic strokes.

Klaviersolo

(18)

Handwritten musical score for measures 18-20, featuring a piano solo. The score is written on a grand staff. Measure 18 begins with a piano dynamic (p) and a melodic line in the right hand, accompanied by a bass line in the left hand. Measures 19 and 20 continue the melodic development with various ornaments and slurs. A circled 'Block (A)' is written below the staff in measure 19.

(19)

Handwritten musical score for measures 19-20. The score is written on a grand staff. Measure 19 features a melodic line in the right hand and a bass line in the left hand. Measure 20 continues the melodic line with various ornaments and slurs.

(20)

Handwritten musical score for measures 20-21. The score is written on a grand staff. Measure 20 features a melodic line in the right hand and a bass line in the left hand. Measure 21 continues the melodic line with various ornaments and slurs.

(21)

Handwritten musical score for measures 21-22. The score is written on a grand staff. Measure 21 features a melodic line in the right hand and a bass line in the left hand. Measure 22 continues the melodic line with various ornaments and slurs.

Handwritten musical notation for measures 22-23. The notation is on a single staff in treble clef. Measure 22 begins with a dynamic marking f and contains several notes with accidentals (flats and sharps) and slurs. Measure 23 continues the melodic line with similar notation and a circled measure number 23 at the end.

Handwritten musical notation for measures 23-24. The notation is on a single staff in treble clef. Measure 23 starts with a dynamic marking f and features a complex melodic line with many notes and accidentals. Measure 24 continues this line, ending with a circled measure number 24.

Handwritten musical notation for measures 24-25. The notation is on a single staff in treble clef. Measure 24 shows a melodic line with various accidentals and slurs. Measure 25 continues the line, ending with a circled measure number 25.

Handwritten musical notation for measures 25-26. The notation is on a single staff in treble clef. Measure 25 is labeled "Violin solo" and begins with a dynamic marking f . It contains a melodic line with many notes, slurs, and accents. Measure 26 continues the line, ending with a circled measure number 26.

Handwritten musical notation for measures 26-27. The notation is on a single staff in treble clef. Measure 26 shows a melodic line with various accidentals and slurs. Measure 27 continues the line, ending with a circled measure number 27.

Handwritten musical notation for measures 27-28. The notation is on a single staff in treble clef. Measure 27 shows a melodic line with various accidentals and slurs. Measure 28 continues the line, ending with a circled measure number 28.

Handwritten musical notation for measures 28. The system consists of two staves. The upper staff contains four measures of music with complex rhythmic patterns and accidentals (sharps and flats). The lower staff features a long, continuous horizontal line with a wavy contour, likely representing a sustained tone or a specific performance technique. A circled measure number '28' is located in the top right corner.

Handwritten musical notation for measures 29. The system consists of two staves. The upper staff contains four measures of music with complex rhythmic patterns and accidentals. The lower staff features a long, continuous horizontal line with a wavy contour. A circled measure number '29' is located in the top right corner.

Handwritten musical notation for measures 30. The system consists of two staves. The upper staff contains four measures of music with complex rhythmic patterns and accidentals. The lower staff features a long, continuous horizontal line with a wavy contour. A circled measure number '30' is located in the top right corner. The text "(nur freies Schlagz. Solo)" is written in the first measure of the upper staff, and "dim" is written in the second measure of the lower staff.

Handwritten musical notation for measures 31. The system consists of two staves. The upper staff contains four measures of music with complex rhythmic patterns and accidentals. The lower staff features a long, continuous horizontal line with a wavy contour. A circled measure number '31' is located in the top right corner. The text "Flöte (Solo)" is written in the first measure of the upper staff, and "(wieder Block)" is written in the first measure of the lower staff.

Handwritten musical notation for measures 32. The system consists of two staves. The upper staff contains four measures of music with complex rhythmic patterns and accidentals. The lower staff features a long, continuous horizontal line with a wavy contour. A circled measure number '32' is located in the top right corner.

Handwritten musical notation for measures 33. The system consists of two staves. The upper staff contains four measures of music with complex rhythmic patterns and accidentals. The lower staff features a long, continuous horizontal line with a wavy contour. A circled measure number '33' is located in the top right corner.

Handwritten musical notation for measures 34. The staff contains complex chords and melodic lines. A circled measure number '34' is at the end. Dynamics include f and ff .

Handwritten musical notation for measures 35. The staff contains complex chords and melodic lines. A circled measure number '35' is at the end.

Handwritten musical notation for measures 36. The staff contains complex chords and melodic lines. A circled measure number '36' is at the end. Dynamics include f and ff .

Handwritten musical notation for measures 37. The staff contains complex chords and melodic lines. A circled measure number '37' is at the end.

Solo 3. Solo

Handwritten musical notation for measures 38. The staff contains complex chords and melodic lines. A circled measure number '38' is at the end. Dynamics include f and ff .

Handwritten musical score for measures 39-40. The score includes staves for Flute (Fl.), Clarinet (Klar.), Violin (Viol.), Piano (Klav.), Bass (Baß), and Cello/Double Bass (Sohly). The notation features various notes, rests, and dynamic markings such as *mf* and *p*. The key signature has one flat (B-flat).

Continuation of the handwritten musical score for measures 40-41. The notation includes notes, rests, and dynamic markings such as *fp*. The key signature remains one flat. A circled measure number '40' is visible at the end of the first system.

fp = 7 7 7 7 7 #



Größ. mit + dir (Teil 2c)

1. Lento

Handwritten musical score for measures 41-44. The score is for a woodwind and percussion ensemble. The instruments are Flute (Fl.), Clarinet (Klar.), Violin (Viol.), Cello (Cello), Bassoon (Fag.), and Percussion (Schlag). The tempo is marked 'Lento'. The key signature has one flat (B-flat). The score includes various musical notations such as dynamics (mf, f, p), articulation (accents, slurs), and performance instructions like 'Pedal' and 'arco'. Measure 41 shows the start of the piece with a flute entry. Measures 42-44 feature complex textures with multiple woodwinds and percussion playing together.

Teil 2d

Handwritten musical score for measures 42-43. The score is for Vibraphone and Pedal. The tempo is marked 'Lento (trai)'. The key signature has one flat (B-flat). The score includes various musical notations such as dynamics (f, p), articulation (accents, slurs), and performance instructions like 'Pedal'. Measure 42 shows the start of the piece with a vibraphone entry. Measure 43 features a complex texture with the vibraphone and pedal playing together.

Teil (2e)

Andante

Klarin
Baß

Handwritten musical score for Clarinet and Bass. The Clarinet part is in treble clef with a 6/4 time signature. The Bass part is in bass clef with a 4/4 time signature. The music features a melodic line in the Clarinet and a rhythmic accompaniment in the Bass. Dynamics include *p*, *f*, and *ff*. A performance instruction reads "ad lib. mit Bogen!" with a *f* dynamic. A circled measure number "43" is in the top right corner.

Handwritten musical score for Clarinet and Bass. The Clarinet part continues the melodic line. The Bass part provides accompaniment. Dynamics include *p*, *f*, and *ff*. A circled measure number "44" is in the top right corner.

Flöte frei

VIBR. 4/4
Pedal

Handwritten musical score for Flute. The part is in treble clef with a 4/4 time signature. It includes vibrato markings and a pedal point. Dynamics include *p*, *f*, and *ff*. A circled measure number "45" is in the top right corner.

Handwritten musical score for Flute. The part continues with melodic and rhythmic elements. Dynamics include *f* and *ff*. A circled measure number "46" is in the top right corner.

Teil (2f)

Solo (frei) (Synthesizer) Solo

Handwritten musical notation for the first system. The upper staff contains a melodic line with notes and dynamic markings pp and ff . The lower staff features a complex rhythmic pattern with a circled P and the word "Pedal". A "VIBR" marking is present above the lower staff.

Handwritten musical notation for the second system. The upper staff has notes with dynamic markings pp and ff . The lower staff shows a rhythmic pattern with a circled P .

Handwritten musical notation for the third system. The upper staff includes notes with dynamic markings pp and ff . The lower staff features a complex rhythmic pattern with a circled P .

Handwritten musical notation for the fourth system. The upper staff has notes with dynamic markings pp and ff . The lower staff features a complex rhythmic pattern with a circled P . A circled number "47" is at the end of the system. The word "Lunga" is written above the lower staff.

1P (Teil 2 von 5) al \square



(A)

Fl.

Klar

Viol

K
C
A
V
I
E
R

Baß

Schlagz

77

Handwritten musical score for a piano ensemble. The score consists of seven staves. The top four staves are for string instruments (Violin I, Violin II, Viola, and Violoncello/Double Bass). The fifth staff is for the right hand of the piano, and the sixth and seventh staves are for the left hand. The score includes various musical notations such as notes, rests, slurs, and dynamic markings. Key markings include "Pedaal", "mf", and "Ad libitum". A tempo change to "Largo" is indicated in the first measure of the top staff. The piece concludes with a "4/4" time signature and a "Tutti" marking.

Teil [3]

langsam (frei)

Alte (frei — / nichtig natürlich) (viel Vibrato) — (frei — langs.)

Vibrato

pp Pedal

f

mf

pp

f

f

(frei rubato)

(rit —) die

6 longa

FING

coll

longa

Pedal

aus

f

f

pp

Cello

(3a)

Klarin.

Baß

VIBR

(p) Pedal

1

2

Baß Solo (frei)

(Normal Flöte)

Flöte *pp*

Klarinetten *m*

Viola *m*

Klarinetten *pp*

Geige *m*

Schlagzeug

dim

④

(frei) Virtuoso (36)

Pedal

Geige *legg.*

Pedal *pp =*

pp *Presto*

pp *Corpo*

⑤

⑥

⑦

von Anfang an **Fine**

Teil 4

Klavier (Allegro agitato) (Prestissimo)

Handwritten musical score for the first system. It consists of two staves. The right staff has a circled 'ff' dynamic marking and a circled '1' at the end. The left staff has a circled '2' and a circled 'ff' dynamic marking. The music features complex chords and triplets.

Handwritten musical score for the second system. It consists of two staves. The right staff has a circled '2' at the end. The left staff has a circled '9' and a circled 'ff' dynamic marking. The music continues with complex chords and triplets.

Handwritten musical score for the third system. It consists of two staves. The right staff has a circled '3' at the end. The left staff has a circled 'ff' dynamic marking and the text "2ter Schlagz. dazu". The music continues with complex chords and triplets.

Handwritten musical score for the fourth system. It consists of two staves. The right staff has a circled '4' at the end. The left staff has a circled 'ff' dynamic marking. The music continues with complex chords and triplets.

Handwritten musical score for the first system, featuring five staves:

- Flöte** (Flute): Rests throughout the system.
- Klar** (Clarinet): Melodic line with accents (^) and slurs. Includes dynamic markings ff and f .
- Kornet** (Cornet): Melodic line with accents (^) and slurs. Includes dynamic markings ff and f .
- Baß** (Bass): Rhythmic accompaniment with slurs and dynamic markings f and ff .
- Schlagz** (Drum): Rhythmic accompaniment with slurs and dynamic markings ff and f .

Rehearsal mark 3 is circled at the top right of the system.

Handwritten musical score for the second system, featuring five staves:

- Flöte** (Flute): Melodic line with slurs and dynamic markings f and ff .
- Klar** (Clarinet): Melodic line with slurs and dynamic markings f and ff .
- Kornet** (Cornet): Melodic line with slurs and dynamic markings f and ff .
- Baß** (Bass): Rhythmic accompaniment with slurs and dynamic markings f and ff .
- Schlagz** (Drum): Rhythmic accompaniment with slurs and dynamic markings f and ff .

Rehearsal mark 4 is circled at the top of the system. The word **Solo!** is written above the bass staff in the final measure. A circled **P** (piano) dynamic marking is at the bottom right.

Handwritten musical score for the first system, consisting of six staves. The notation includes various notes, rests, and dynamic markings such as *pp* and *p*. There are also some handwritten annotations like "133" and "arco" circled in the second staff. The score is written in a single system with vertical bar lines.

Handwritten musical score for the second system, continuing the notation from the first system. It features six staves with complex rhythmic patterns, including triplets and sixteenth notes. Dynamic markings like *pp* and *f* are present. The notation is dense and includes various articulation marks.

Handwritten musical score for system 7, measures 1-4. The score consists of six staves. The top two staves are for strings, the middle two for woodwinds, and the bottom two for percussion. Dynamics include *fpp*, *pp*, and *p*. A "Pedal" marking is present in the third staff. A circled "7" is at the end of the system.

Handwritten musical score for system 8, measures 1-4. The score consists of six staves. The top two staves are for strings, the middle two for woodwinds, and the bottom two for percussion. Dynamics include *p*, *f*, and *ff*. A circled "8" is at the end of the system.

Handwritten musical score for a string ensemble, measures 9-10. The score is written on five staves. The first three staves are for violins (V1, V2, V3) and the last two are for violas (V4, V5). The notation includes various notes, rests, and dynamic markings such as *mf*, *f*, and *ff*. There are also performance instructions like *VIBR.* and *arco*. A circled measure number '10' is located in the top right corner.

Handwritten musical score for a string ensemble, measures 11-12. The score is written on a single staff. The notation includes notes, rests, and dynamic markings such as *f* and *ff*. There are also performance instructions like *arco* and *col.*. A circled measure number '11' is located in the top right corner.

Handwritten musical score for measures 12-17. The score includes staves for Flute (Fl.), Clarinet (Klar.), Violin (Viol.), Piano (Klav.), Bass (Baß), and Cello/Double Bass (Celli/Bass). The music is in G major (one sharp) and 3/4 time. Measure 12 starts with a forte (f) dynamic. The piano part features a triplet of eighth notes in measures 12 and 13. The bass part has a triplet of eighth notes in measure 12. The cello/bass part has a triplet of eighth notes in measure 12. The score includes various articulations such as accents (^) and slurs, and dynamic markings like *mf* and *arco*.

Handwritten musical score for measures 18-23. The score includes staves for Flute (Fl.), Clarinet (Klar.), Violin (Viol.), Piano (Klav.), Bass (Baß), and Cello/Double Bass (Celli/Bass). The music is in G major (one sharp) and 3/4 time. Measure 18 starts with a forte (f) dynamic. The piano part features a triplet of eighth notes in measure 18. The bass part has a triplet of eighth notes in measure 18. The cello/bass part has a triplet of eighth notes in measure 18. The score includes various articulations such as accents (^) and slurs, and dynamic markings like *mf* and *arco*. A circled 'D' is present in the piano part in measure 18. The score ends with a circled 'P133' in the bass part in measure 23.

ppp = sempre crescendo →

14

4a

15

Flöte

Klarinetten

Viola

Klavieren

Geige

Schlagwerk

16

17

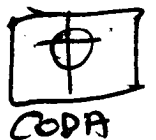
(letzten 4 Takte)

(letzten 4 Takte)

(letzten 4 Takte)

Handwritten musical score for measures 18 and 19. The score consists of five staves. Measures 18 and 19 are circled in the top right corner. The notation includes various notes, rests, and dynamic markings such as *f* and *ff*. The text "(letzten 4 Takte)" is written in parentheses above the staves for measures 18 and 19. A double-headed vertical arrow is present in measure 19.

Handwritten musical score for measure 20. The score consists of seven staves. Measure 20 is circled in the top right corner. The notation includes various notes, rests, and dynamic markings such as *ff*. The score is heavily marked with slanted lines and other symbols, possibly indicating performance instructions or editing.



lento (pesante

4b

21

^
|||

^
|

^
b o

^
b o

^
b o

^
b o

^
b o

^
b o

Klar

Pedal

Carco

4c

22

23

(p. rit + dim)

Klar

Sobloz

Klarinette (Solo) *prez* 4d

VIBRAPHON (Solo) *prez* 4e

Presto

wieder (frei) *rubato*

4f

Baß Solo (frei) (ferrieden)

Robato

31 Presto
Pizz
32 (frei) arco > up = accel. f

to presto (auf 4)!

33 Trem. Presto
34

4g

Klav. (frei)

Klav.

35 f 3
36

4h

36

Leute

Fl. $f =$ $\# \frac{9}{2}$ $\hat{1}$ $\hat{2}$ $\hat{3}$ $\hat{4}$ $\hat{5}$ $\hat{6}$ $\hat{7}$ $\hat{8}$ $\hat{9}$ $\hat{10}$ $\hat{11}$ $\hat{12}$ $\hat{13}$ $\hat{14}$ $\hat{15}$ $\hat{16}$ $\hat{17}$ $\hat{18}$ $\hat{19}$ $\hat{20}$ $\hat{21}$ $\hat{22}$ $\hat{23}$ $\hat{24}$ $\hat{25}$ $\hat{26}$ $\hat{27}$ $\hat{28}$ $\hat{29}$ $\hat{30}$ $\hat{31}$ $\hat{32}$

Klar $f =$

Viol. (Synthesizer! Solo) ppp $\hat{1}$ $\hat{2}$ $\hat{3}$ $\hat{4}$ $\hat{5}$ $\hat{6}$ $\hat{7}$ $\hat{8}$ $\hat{9}$ $\hat{10}$ $\hat{11}$ $\hat{12}$ $\hat{13}$ $\hat{14}$ $\hat{15}$ $\hat{16}$ $\hat{17}$ $\hat{18}$ $\hat{19}$ $\hat{20}$ $\hat{21}$ $\hat{22}$ $\hat{23}$ $\hat{24}$ $\hat{25}$ $\hat{26}$ $\hat{27}$ $\hat{28}$ $\hat{29}$ $\hat{30}$ $\hat{31}$ $\hat{32}$

Klar pp $\hat{1}$ $\hat{2}$ $\hat{3}$ $\hat{4}$ $\hat{5}$ $\hat{6}$ $\hat{7}$ $\hat{8}$ $\hat{9}$ $\hat{10}$ $\hat{11}$ $\hat{12}$ $\hat{13}$ $\hat{14}$ $\hat{15}$ $\hat{16}$ $\hat{17}$ $\hat{18}$ $\hat{19}$ $\hat{20}$ $\hat{21}$ $\hat{22}$ $\hat{23}$ $\hat{24}$ $\hat{25}$ $\hat{26}$ $\hat{27}$ $\hat{28}$ $\hat{29}$ $\hat{30}$ $\hat{31}$ $\hat{32}$

Bass ppp $\hat{1}$ $\hat{2}$ $\hat{3}$ $\hat{4}$ $\hat{5}$ $\hat{6}$ $\hat{7}$ $\hat{8}$ $\hat{9}$ $\hat{10}$ $\hat{11}$ $\hat{12}$ $\hat{13}$ $\hat{14}$ $\hat{15}$ $\hat{16}$ $\hat{17}$ $\hat{18}$ $\hat{19}$ $\hat{20}$ $\hat{21}$ $\hat{22}$ $\hat{23}$ $\hat{24}$ $\hat{25}$ $\hat{26}$ $\hat{27}$ $\hat{28}$ $\hat{29}$ $\hat{30}$ $\hat{31}$ $\hat{32}$

Vibr pp

Pedal pp

37

letzten 4 Takte wiederholt

Handwritten musical score for page 38. The score consists of six staves. The top staff has a treble clef and contains notes with dynamic markings *pp* and *p*. The second staff has a treble clef and contains a long horizontal line with a slur over it, and dynamic markings *ppp* and *ppp*. The third staff has a treble clef and contains notes with a slur over them, and dynamic markings *ppp* and *ppp*. The fourth staff has a treble clef and contains notes with a slur over them, and dynamic markings *ppp* and *ppp*. The fifth staff has a treble clef and contains notes with a slur over them, and dynamic markings *ppp* and *ppp*. The sixth staff has a treble clef and contains notes with a slur over them, and dynamic markings *ppp* and *ppp*. The word "Solo" is written on the second staff. The number "8" is written above the third staff. The numbers "2 3 4 5 6 7 8" are written below the notes in the third staff. The word "Solo" is written on the second staff. The word "Solo" is written on the second staff.

Handwritten musical score for page 39. The score consists of a single staff with a large bracket over it. The text "Letzter 4 Takte nochmals" is written inside the bracket. The staff is divided into four measures by vertical lines.

Solo, Solo (cresc. + accel - bis ff (Presto) Anfangstempo

Coda (Teil 4)

Coda (Prestissimo)

Handwritten musical score for Coda (Teil 4) featuring Flute, Clarinet, Violin, Piano, Bass, and Cello. The score is written in a single system with six staves. The Flute part starts with a dynamic marking of *fff* and includes a slur over the first two measures. The Clarinet part also starts with *fff* and has a slur. The Violin part begins with a dynamic marking of *mf* and a slur. The Piano part has a dynamic marking of *mf* and a slur. The Bass part has a dynamic marking of *mf* and a slur. The Cello part has a dynamic marking of *mf* and a slur. The score is written in a single system with six staves. The Flute part starts with a dynamic marking of *fff* and includes a slur over the first two measures. The Clarinet part also starts with *fff* and has a slur. The Violin part begins with a dynamic marking of *mf* and a slur. The Piano part has a dynamic marking of *mf* and a slur. The Bass part has a dynamic marking of *mf* and a slur. The Cello part has a dynamic marking of *mf* and a slur.

Handwritten musical score for Klavier (Solo) featuring piano and bass. The score is written in a single system with two staves. The piano part starts with a dynamic marking of *f* and includes a slur over the first two measures. The bass part has a dynamic marking of *f* and a slur. The score is written in a single system with two staves. The piano part starts with a dynamic marking of *f* and includes a slur over the first two measures. The bass part has a dynamic marking of *f* and a slur.

Loupa?

Handwritten musical score for a string ensemble. The score consists of seven staves. The top four staves are for violins and violas, and the bottom three are for cellos and double basses. The notation includes various chords, melodic lines, and dynamic markings. A 'Pedal' section is indicated in the cello/bass part. The bottom of the page features a rhythmic notation line with 'fff mf' and 'f' markings.

frei (lento)

Teil ⑤

①

Fl.

Klar.

Viol.

Klavier

Brass

Schlagz. (VIBRAPHON)

Handwritten musical score for guitar, consisting of six staves. The notation includes various chords, melodic lines, and technical markings such as accents (^), slurs, and a circled number 3 at the end of the piece. The first staff has a circled number 3 at the end. The second staff has a circled number 3 at the end. The third staff has a circled number 3 at the end. The fourth staff has a circled number 3 at the end. The fifth staff has a circled number 3 at the end. The sixth staff has a circled number 3 at the end.

RE-ACK

(guit)

3

frei (lento)

Klavier.

Handwritten musical score for piano, consisting of two staves. The notation includes various chords, melodic lines, and technical markings such as accents (^), slurs, and a circled number 4 at the end of the piece. The first staff has a circled number 4 at the end. The second staff has a circled number 4 at the end.

4

VIBR.

(Pedal)

lunga

(folgt Teil (3) bis Fine)
nur Teil (Flöte (A27 + Vibraphon)!

1986 (Lein)
Adolf Scherbaum