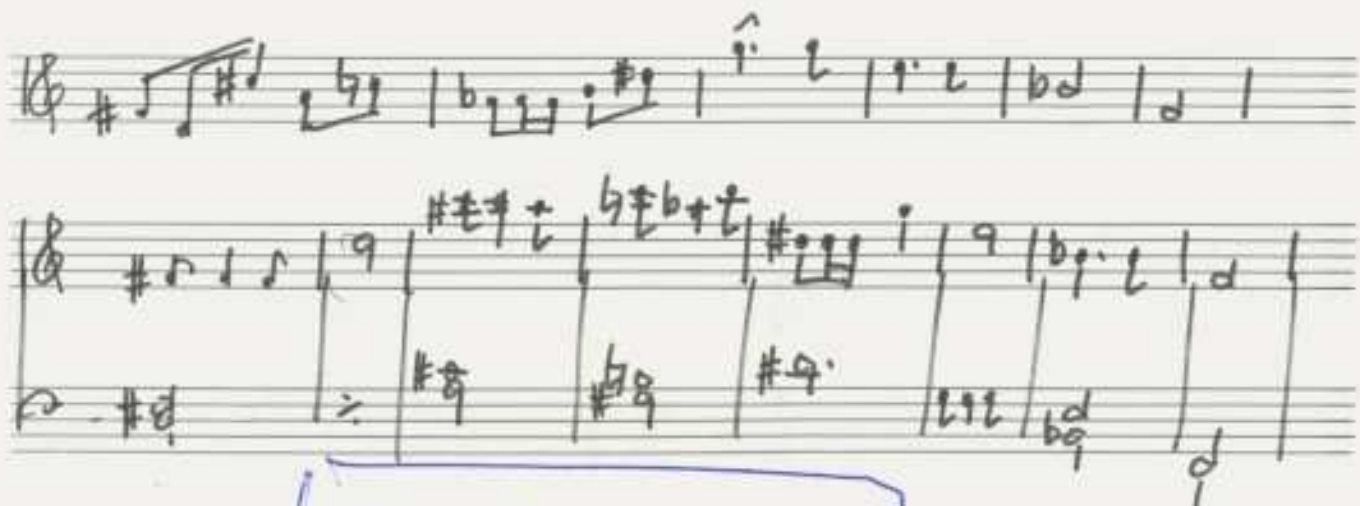


Ursus

Notenheft





Sonate 87

für

Piano

Bass

Schlagzeug (+ Vibraphon)

(3 Teile)

Adolf Scherbaum

Teil 1.

Ciao Solo (sehr rasch)

Handwritten musical score for the first system. It consists of five staves. The top staff is for the Flute (Flöte), the second for Bassoon (Fagot), and the third for Clarinet (Schlag). The bottom two staves are for the Piano (P). The tempo is marked 'sehr rasch' and the dynamic is 'pp'. There are various musical notations including accents, slurs, and a circled '1' at the end of the system.

Handwritten musical score for the second system. It consists of five staves. The top staff is for the Flute (Flöte), the second for Bassoon (Fagot), and the third for Clarinet (Schlag). The bottom two staves are for the Piano (P). The system is divided into four measures, each with a circled number (1, 2, 3, 4) above it. There are various musical notations including accents, slurs, and dynamics like 'p'.

④

Handwritten musical score for the first system, measures 7 and 8. The system includes a grand staff with treble and bass clefs, a piano part with a key signature of one sharp (F#), and a bass line. Measure 7 is circled with a '7'. The piano part features complex chords with accidentals and slurs. The bass line has some rhythmic notation.

Handwritten musical score for the second system, measures 9 and 10. The system includes a grand staff with treble and bass clefs, a piano part with a key signature of one sharp (F#), and a bass line. Measure 9 is circled with a '9'. The piano part has a melodic line with slurs and dynamics like 'p'. The bass line has a long note with a 'p' dynamic. The word 'Pedal' is written in the bass line area.

Handwritten musical score for the third system, measures 11 and 12. The system includes a grand staff with treble and bass clefs, a piano part with a key signature of one sharp (F#), and a bass line. Measure 11 is circled with a '11'. The piano part has a melodic line with slurs and dynamics like 'p'. The bass line has a long note with a 'p' dynamic. The word 'Baß Solo' is written in the bass line area.

Handwritten musical score for the first system, measures 10-12. The system consists of three staves. The top staff is in treble clef with a key signature of one flat (B-flat). The middle staff is in bass clef. The bottom staff is in bass clef. Measure 10 contains notes B-flat, G, A, B-flat with accents and a forte (f) dynamic. Measure 11 contains notes G, B-flat, A, B-flat with accents and a forte (>) dynamic. Measure 12 contains notes B-flat, G, A, B-flat with accents and a forte (>) dynamic. A circled measure number '10' is in the top right corner.

Handwritten musical score for the second system, measures 13-15. The system consists of three staves. The top staff is in treble clef with a key signature of one flat (B-flat). The middle staff is in bass clef. The bottom staff is in bass clef. Measure 13 contains notes B-flat, G, A, B-flat with accents and a forte (f) dynamic. Measure 14 contains notes G, B-flat, A, B-flat with accents and a forte (>) dynamic. Measure 15 contains notes B-flat, G, A, B-flat with accents and a forte (f) dynamic. A circled measure number '11' is in the top right corner.

Handwritten musical score for the third system, measures 16-18. The system consists of three staves. The top staff is in treble clef with a key signature of one flat (B-flat). The middle staff is in bass clef. The bottom staff is in bass clef. Measure 16 contains notes B-flat, G, A, B-flat with accents and a forte (f) dynamic. Measure 17 contains notes G, B-flat, A, B-flat with accents and a forte (>) dynamic. Measure 18 contains notes B-flat, G, A, B-flat with accents and a forte (>) dynamic. A circled measure number '12' is in the top right corner. A circled sharp sign (#) is in the top left corner of the system.

Handwritten musical score for measures 13-14. The system includes a grand staff with treble and bass clefs, and a separate staff for the solo line. Measure 13 features a treble clef with a circled sharp sign (♯) and a bass clef with a circled sharp sign (♯). The solo line is marked "Solo" and contains a sequence of eighth notes. Measure 14 shows a treble clef with a circled sharp sign (♯) and a bass clef with a circled sharp sign (♯). The solo line is empty. Above the grand staff, there are handwritten notes and symbols, including a circled sharp sign (♯) and various musical notations.

Handwritten musical score for measures 14-15. The system includes a grand staff with treble and bass clefs. Measure 14 features a treble clef with a circled sharp sign (♯) and a bass clef with a circled sharp sign (♯). The solo line is empty. Measure 15 shows a treble clef with a circled sharp sign (♯) and a bass clef with a circled sharp sign (♯). The solo line is empty. Above the grand staff, there are handwritten notes and symbols, including a circled sharp sign (♯) and various musical notations.

Handwritten musical score for measures 15-16. The system includes a grand staff with treble and bass clefs, and a separate staff for the solo line. Measure 15 features a treble clef with a circled sharp sign (♯) and a bass clef with a circled sharp sign (♯). The solo line is marked "Pedal" and contains a sequence of notes with a circled sharp sign (♯) and a circled sharp sign (♯). Measure 16 shows a treble clef with a circled sharp sign (♯) and a bass clef with a circled sharp sign (♯). The solo line is marked "Pedal" and contains a sequence of notes with a circled sharp sign (♯) and a circled sharp sign (♯). Above the grand staff, there are handwritten notes and symbols, including a circled sharp sign (♯) and various musical notations.

16

Handwritten musical notation for system 16. It consists of three staves. The top staff has a circled 'p' and notes with accidentals. The middle staff has a circled 'Solo' and a dense cluster of notes. The bottom staff has a circled 'p' and notes with accents.

17

Handwritten musical notation for system 17. It consists of three staves. The top staff has notes with accents. The middle staff has notes with various accidentals and a circled 'ff'. The bottom staff has notes with accents.

18

Handwritten musical notation for system 18, ending with a Coda. It consists of three staves. The top staff has a circled 'Solo' and notes. The middle staff has notes with a circled 'p' and a circled 'Solo'. The bottom staff has notes with a circled 'p'. There are handwritten annotations: '26t p 33 solo (36t wieder tacet)', '26t tacet', and 'ff (36t wieder tacet)'. A large 'Coda' symbol is at the end of the system.

18

pp

Solo # # #

VIBR. Solo

19

20

p

21

f

f

f

f

Handwritten musical score for measures 22-23. The system includes a treble clef with a key signature of one flat (B-flat), a bass clef, and a tenor clef. The treble clef part contains notes with accidentals (B-flat, A, G, F, E, D, C, B) and slurs. The bass clef part contains notes with accidentals (B-flat, A, G, F, E, D, C, B) and slurs. The tenor clef part contains notes with accidentals (B-flat, A, G, F, E, D, C, B) and slurs. A circled measure number '23' is at the end of the system.

Handwritten musical score for measures 23-24. The system includes a treble clef with a key signature of one flat (B-flat), a bass clef, and a tenor clef. The treble clef part contains notes with accidentals (B-flat, A, G, F, E, D, C, B) and slurs. The bass clef part contains notes with accidentals (B-flat, A, G, F, E, D, C, B) and slurs. The tenor clef part contains notes with accidentals (B-flat, A, G, F, E, D, C, B) and slurs. A circled measure number '23' is at the end of the system.

Handwritten musical score for measures 24-25. The system includes a treble clef with a key signature of one flat (B-flat), a bass clef, and a tenor clef. The treble clef part contains notes with accidentals (B-flat, A, G, F, E, D, C, B) and slurs. The bass clef part contains notes with accidentals (B-flat, A, G, F, E, D, C, B) and slurs. The tenor clef part contains notes with accidentals (B-flat, A, G, F, E, D, C, B) and slurs. A circled measure number '24' is at the end of the system. The word 'Pedal' is written above the treble clef and below the tenor clef.

Pedal

Schlagzeug

Pedal

Pdo

25

26

27

The image shows three systems of handwritten musical notation. Each system consists of three staves. The top staff is for the piano, the middle for the bass, and the bottom for the drum set. The first system (measures 25-26) has a piano part with a long pedal line and a drum part with a rhythmic pattern. The second system (measures 26-27) has a piano part with a long pedal line and a drum part with a rhythmic pattern. The third system (measures 27-28) has a piano part with a long pedal line and a drum part with a rhythmic pattern.

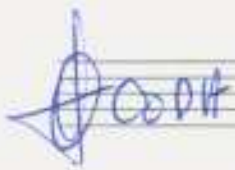
Scherz. Solo

Handwritten musical notation for the first system, consisting of two staves. The top staff begins with a treble clef, a key signature of two sharps (F# and C#), and a dynamic marking 'p'. The bottom staff begins with a bass clef and a dynamic marking 'f'. Both staves contain rhythmic notation with stems and beams, and some notes have slurs or accents above them.

Handwritten musical notation for the second system, consisting of two staves. The top staff begins with a circled sharp sign (#). Both staves contain rhythmic notation with stems and beams, and some notes have slurs or accents above them.

Handwritten musical notation for the third system, consisting of two staves. The top staff begins with a circled sharp sign (#) and the word "din" written next to it. The bottom staff begins with a circled "p" and ends with "D.G.". Both staves contain rhythmic notation with stems and beams, and some notes have slurs or accents above them.

Teil 1
al



Teil ②

frei/jubilant

Handwritten musical score for Part 2 of Scherzo for Piano, Bassoon, and Trombone. The score is written on three systems of staves. The first system includes a piano part with a circled 'Solo' marking and a 'pp Pedal' instruction. The second system includes a bassoon part with a circled 'Solo' marking and a trombone part. The third system includes a piano part with a circled 'Solo' marking and a bassoon part with a circled 'Solo' marking. The score features various musical notations including notes, rests, dynamics (pp, p), and articulation marks.

Handwritten musical score for the first system, measures 1-2. It features three staves: Treble, Bass, and Piano. The music is in B-flat major and 3/4 time. Measure 1 starts with a piano (p) dynamic. Measure 2 includes a forte (f) dynamic. The score contains various musical notations such as slurs, accents, and dynamic markings.

2

Handwritten musical score for the second system, measures 3-4. It features three staves: Treble, Bass, and Piano. Measure 3 begins with a piano (p) dynamic. Measure 4 features a forte (f) dynamic. The notation includes complex chordal structures and melodic lines with slurs and accents.

3

Handwritten musical score for the third system, measures 5-6. It features three staves: Treble, Bass, and Piano. Measure 5 starts with a forte (f) dynamic. Measure 6 includes a piano (p) dynamic. The score is highly detailed with many slurs, accents, and dynamic markings.

4

The image shows three systems of handwritten musical notation, likely for a piano or similar instrument. Each system consists of four staves. The notation is dense and includes various musical symbols such as notes, rests, and dynamic markings.

- System 5:** The first staff has a treble clef and a key signature of one flat. The second staff has a bass clef and a key signature of one flat. The third and fourth staves have a bass clef and a key signature of one flat. The system ends with a circled number 5.
- System 6:** The first staff has a treble clef and a key signature of one flat. The second staff has a bass clef and a key signature of one flat. The third and fourth staves have a bass clef and a key signature of one flat. The system ends with a circled number 6.
- System 7:** The first staff has a treble clef and a key signature of two sharps. The second staff has a bass clef and a key signature of two sharps. The third and fourth staves have a bass clef and a key signature of two sharps. The system ends with a circled number 7.

7

Handwritten musical score for measures 7 and 8. The score is written on three staves. The top staff is the bass clef, the middle is the alto clef, and the bottom is the treble clef. In measure 7, there are annotations: "H Pedal" with a vertical line pointing to a box on the bass staff, and "Cluster (dicht)" with a vertical line pointing to a box on the alto staff. The piano part in measure 7 features a cluster of notes with a slur and a fermata. In measure 8, there is a circled "Pedal aus" annotation on the bass staff. The piano part in measure 8 continues with a cluster of notes.

8

Handwritten musical score for measures 9 and 10. The score is written on three staves. The top staff is the bass clef, the middle is the alto clef, and the bottom is the treble clef. In measure 9, there is a circled "Pedal aus" annotation on the bass staff. The piano part in measure 9 features a cluster of notes with a slur and a fermata. In measure 10, there is a circled "Pedal aus" annotation on the bass staff. The piano part in measure 10 continues with a cluster of notes. There is a handwritten note "letzter gr. rit)" below the piano part in measure 10.

9

Handwritten musical score for measures 11 and 12. The score is written on three staves. The top staff is the bass clef, the middle is the alto clef, and the bottom is the treble clef. In measure 11, there is a circled "Pedal aus" annotation on the bass staff. The piano part in measure 11 features a cluster of notes with a slur and a fermata. In measure 12, there is a circled "Pedal aus" annotation on the bass staff. The piano part in measure 12 continues with a cluster of notes. There is a handwritten note "letzter gr. rit)" below the piano part in measure 12.

10

024-20

Pedal $\textcircled{p} =$

Block \textcircled{A}

11

Block \textcircled{A}

12

Block \textcircled{A}

13

Handwritten musical score for measures 14-15. The system includes three staves: Treble Clef (top), Bass Clef (middle), and a lower Treble Clef (bottom). Measure 14 features a forte (*f*) dynamic and a triplet of eighth notes in the treble staff, with accents (^) and a slur. The bass staff has a whole note chord. Measure 15 continues the treble staff with a triplet of eighth notes and a slur, and the bass staff has a whole note chord. A circled measure number '14' is in the top right. A circled 'A' is below the bottom staff. The word 'Block' is written below the bottom staff. A circled 'A' is next to 'Block'. The word 'Pedal' is written above the bass staff with a circled 'A'.

Handwritten musical score for measures 15-16. The system includes three staves: Treble Clef (top), Bass Clef (middle), and a lower Treble Clef (bottom). Measure 15 features a triplet of eighth notes in the treble staff, with accents (^) and a slur. The bass staff has a whole note chord. Measure 16 features a whole note chord in the treble staff and a whole note chord in the bass staff. A circled measure number '15' is in the top right. A circled 'A' is below the bottom staff. The word 'Block' is written below the bottom staff. A circled 'A' is next to 'Block'. The word 'Pedal' is written above the bass staff with a circled 'A'.

Handwritten musical score for measures 16-17. The system includes three staves: Treble Clef (top), Bass Clef (middle), and a lower Treble Clef (bottom). Measure 16 features a whole note chord in the treble staff and a whole note chord in the bass staff. Measure 17 features a whole note chord in the treble staff and a whole note chord in the bass staff. A circled measure number '16' is in the top right. A circled 'A' is below the bottom staff. The word 'Block' is written below the bottom staff. A circled 'A' is next to 'Block'. The word 'Pedal' is written above the bass staff with a circled 'A'.

(frei) breit

(rit)

17

Flute: (frei) breit, (rit)

Piano: Pedal, arco

Cello/Double Bass: arco

Percussion: Schlag

G.P.

(frei)

18

Flute: (frei)

Piano: P

(2te u. 3te al) CODA

♩ COPA

Handwritten musical score for the first system. It consists of four staves. The top staff is in treble clef and contains a melodic line with various ornaments and slurs. The second staff is in bass clef and contains a bass line with notes and rests. The third staff is in bass clef and contains a bass line with notes and rests. The bottom staff is a drum line with rhythmic notation. Dynamic markings include 'Pedal (P)' and 'pp'. There are also some handwritten annotations like 'P' in a circle.

Handwritten musical score for the second system. It consists of four staves. The top staff is in treble clef and contains a melodic line with various ornaments and slurs. The second staff is in bass clef and contains a bass line with notes and rests. The third staff is in bass clef and contains a bass line with notes and rests. The bottom staff is a drum line with rhythmic notation. Dynamic markings include 'P' in a circle and 'pp'. There is a large bracketed section on the right side of the system with the word 'lunga' written below it. There are also some handwritten annotations like 'P' in a circle and 'P' in a circle.

Presto

Teil 3

Handwritten musical score for the first system of 'Teil 3'. It consists of five staves. The top staff is for the right hand, starting with a treble clef and a key signature of one flat. It contains notes for the first three measures, with dynamics *mp* and *p*. The second staff is for the left hand, starting with a bass clef and a 2/4 time signature. It contains rests for the first two measures and notes for the third, with dynamics *pp* and *p*. The third and fourth staves are for the piano, with notes and dynamics *pp* and *p*. The fifth staff is for the cello, with notes and dynamics *mp* and *p*. The system ends with a circled '1'.

Handwritten musical score for the second system of 'Teil 3'. It consists of five staves. The top staff is for the right hand, starting with a treble clef and a key signature of one flat. It contains notes for the first three measures, with dynamics *mf* and *f*. The second staff is for the left hand, starting with a bass clef and a 2/4 time signature. It contains rests for the first two measures and notes for the third, with dynamics *pp* and *p*. The third and fourth staves are for the piano, with notes and dynamics *pp* and *p*. The fifth staff is for the cello, with notes and dynamics *mf* and *f*. The system ends with a circled '2'.

Handwritten musical score for the third system of 'Teil 3'. It consists of five staves. The top staff is for the right hand, starting with a treble clef and a key signature of one flat. It contains notes for the first three measures, with dynamics *f* and *ff*. The second staff is for the left hand, starting with a bass clef and a 2/4 time signature. It contains rests for the first two measures and notes for the third, with dynamics *f* and *ff*. The third and fourth staves are for the piano, with notes and dynamics *f* and *ff*. The fifth staff is for the cello, with notes and dynamics *f* and *ff*. The system ends with a circled '3'.

4

Handwritten musical score for system 4, measures 1-4. The system includes a treble clef staff with a melodic line, a bass clef staff with a bass line, and two piano staves with chords and rhythmic patterns. The music includes various notes, rests, and dynamic markings like accents and slurs.

5

Handwritten musical score for system 5, measures 1-4. The system includes a treble clef staff with a melodic line, a bass clef staff with a bass line, and two piano staves with chords and rhythmic patterns. The music includes various notes, rests, and dynamic markings like accents and slurs.

6

Handwritten musical score for system 6, measures 1-4. The system includes a treble clef staff with a melodic line, a bass clef staff with a bass line, and two piano staves with chords and rhythmic patterns. The music includes various notes, rests, and dynamic markings like accents and slurs.

Handwritten musical score for the first system, marked with a circled 7. It features a treble clef staff with a melodic line and a bass clef staff with a bass line. The music is in a key with one flat (B-flat major or D minor) and a 3/4 time signature. The notation includes various accidentals, slurs, and dynamic markings.

Handwritten musical score for the second system, marked with a circled 8. It continues the piece with similar notation to the first system, including a treble clef staff and a bass clef staff. The key signature remains one flat, and the time signature is 3/4. The notation includes slurs, accents, and dynamic markings.

Handwritten musical score for the third system, marked with a circled 9. It concludes the piece with similar notation to the previous systems, including a treble clef staff and a bass clef staff. The key signature remains one flat, and the time signature is 3/4. The notation includes slurs, accents, and dynamic markings.

Handwritten musical score for measures 10-14. It features four staves: Treble clef, Bass clef, Bass clef, and Bass clef. The first staff has a circled 'ff' and 'Pedale'. The second staff has a circled 'p' and '>'. The third staff has a circled 'ff' and '>'. The fourth staff has '>' and 'din'. There are various musical notations including notes, rests, and dynamic markings.

Handwritten musical score for measures 15-19. It features four staves: Treble clef, Bass clef, Bass clef, and Bass clef. The first staff has a circled 'p' and 'Pedale'. The second staff has a circled 'p' and '>'. The third staff has '>' and '>'. The fourth staff has '>' and '>'. There are various musical notations including notes, rests, and dynamic markings.

Handwritten musical score for measures 20-24. It features four staves: Treble clef, Bass clef, Bass clef, and Bass clef. The first staff has a circled '20' and '>'. The second staff has a circled 'p' and '>'. The third staff has '>' and '>'. The fourth staff has '>' and '>'. There are various musical notations including notes, rests, and dynamic markings.

Handwritten musical score for measures 13-14. The system includes a grand staff with four staves: two for the right hand (treble and alto clefs) and two for the left hand (bass and tenor clefs). Measure 13 is circled in the top right corner. The notation includes various notes, rests, and dynamic markings such as f and ff . A "Pedal" marking is present in the first staff. The music features complex rhythmic patterns and articulation marks.

Handwritten musical score for measures 14-15. The system includes a grand staff with four staves. Measure 14 is circled in the top right corner. The notation includes various notes, rests, and dynamic markings such as f and ff . The music continues with complex rhythmic patterns and articulation marks.

Handwritten musical score for measures 15-16. The system includes a grand staff with four staves. Measure 15 is circled in the top right corner. The notation includes various notes, rests, and dynamic markings such as f and ff . The music continues with complex rhythmic patterns and articulation marks.

15

16

Handwritten musical score for measures 15-17. Measure 15: Treble clef, whole rest. Bass clef, whole rest. Cello/Bass clef, 'Solo' marking, eighth-note scale starting on G2. Measure 16: Treble clef, whole rest. Bass clef, whole rest. Cello/Bass clef, 'dim' marking, eighth-note scale starting on G2. Measure 17: Treble clef, whole rest. Bass clef, whole rest. Cello/Bass clef, 'p' marking, eighth-note scale starting on G2.

Handwritten musical score for measures 17-18. Measure 17: Treble clef, eighth-note scale starting on G2. Bass clef, whole rest. Cello/Bass clef, whole rest. Measure 18: Treble clef, eighth-note scale starting on G2. Bass clef, whole rest. Cello/Bass clef, whole rest.

Handwritten musical score for measures 18-20. Measure 18: Treble clef, eighth-note scale starting on G2. Bass clef, eighth-note scale starting on G2. Cello/Bass clef, eighth-note scale starting on G2. Measure 19: Treble clef, eighth-note scale starting on G2. Bass clef, eighth-note scale starting on G2. Cello/Bass clef, eighth-note scale starting on G2. Measure 20: Treble clef, eighth-note scale starting on G2. Bass clef, eighth-note scale starting on G2. Cello/Bass clef, eighth-note scale starting on G2.

19

Handwritten musical score for measures 19-20, system 1. It consists of three staves: Violin I, Violin II, and Piano. The Violin I staff has notes with accents and slurs. The Violin II staff has notes with accents and slurs. The Piano staff has a complex melodic line with many accidentals and slurs. There are dynamic markings like 'f' and 'ff'.

20

Handwritten musical score for measures 21-22, system 2. It consists of three staves: Violin I, Violin II, and Piano. The Violin I staff has notes with accents and slurs. The Violin II staff has notes with accents and slurs. The Piano staff has a complex melodic line with many accidentals and slurs. There are dynamic markings like 'f' and 'ff'.

21

Handwritten musical score for measures 23-24, system 3. It consists of three staves: Violin I, Violin II, and Piano. The Violin I staff has boxes and slurs, with the word 'Pedal' written below. The Violin II staff has boxes and slurs, with 'Ped. aus' written below. The Piano staff has notes with accents and slurs. There are dynamic markings like 'ff' and 'ff/Pedal'.

21

Pedals

22

Handwritten musical score for measures 21-22. It features four staves: Treble Clef (top), Bass Clef (second), Bass Clef (third), and Bass Clef (bottom). The top staff contains a dense, wavy line of notes with a 'Pedal' marking above it. The second staff has a treble clef and contains notes with various accidentals (sharps, flats, naturals) and fingerings (1-4). The third staff has a bass clef and contains notes with accidentals and fingerings. The bottom staff has a bass clef and contains notes with accidentals and fingerings. A circled '22' is at the end of the system.

23

Handwritten musical score for measures 23-24. It features four staves: Treble Clef (top), Bass Clef (second), Bass Clef (third), and Bass Clef (bottom). The top staff has a treble clef and contains notes with a 'Pedal' marking above it and a circled '23' at the end. The second staff has a bass clef and contains notes with a circled 'p' at the end. The third staff has a bass clef and contains notes with a circled 'p' at the end. The bottom staff has a bass clef and contains notes with a circled 'p' at the end.

24

Handwritten musical score for measures 25-26. It features four staves: Treble Clef (top), Bass Clef (second), Bass Clef (third), and Bass Clef (bottom). The top staff has a treble clef and contains notes with a circled 'pp' at the beginning and a circled 'p' at the end. The second staff has a bass clef and contains notes with a circled 'p' at the end. The third staff has a bass clef and contains notes with a circled 'p' at the end. The bottom staff has a bass clef and contains notes with a circled 'p' at the end.

Handwritten musical score for measures 25. The system includes three staves: Violin I, Violin II, and Cello/Double Bass. Measure 25 is circled in the top right corner.

Violin I staff: pp dynamic marking, notes with stems and beams.

Violin II staff: pp dynamic marking, notes with stems and beams. Includes the handwritten word "Solo" with arrows pointing to the notes.

Cello/Double Bass staff: p dynamic marking, notes with stems and beams.

Handwritten musical score for measures 26. The system includes three staves: Violin I, Violin II, and Cello/Double Bass. Measure 26 is circled in the top right corner.

Violin I staff: p dynamic marking, notes with stems and beams.

Violin II staff: f dynamic marking, notes with stems and beams.

Cello/Double Bass staff: f dynamic marking, notes with stems and beams.

Handwritten musical score for measures 27. The system includes three staves: Violin I, Violin II, and Cello/Double Bass. Measure 27 is circled in the top right corner.

Violin I staff: pp dynamic marking, notes with stems and beams.

Violin II staff: pp dynamic marking, notes with stems and beams.

Cello/Double Bass staff: p dynamic marking, notes with stems and beams.

28

Handwritten musical score for measures 28-30, system 1. The score is written on a grand staff (treble, alto, and bass clefs). Measure 28 shows a piano (p) dynamic marking. Measure 29 features a forte (f) dynamic marking. The bass line has a long note with a crescendo hairpin. The piano part has various notes and rests, with some notes marked with accents (^).

29

Handwritten musical score for measures 28-30, system 2. The score is written on a grand staff. Measure 28 shows a forte (f) dynamic marking. Measure 29 features a forte (f) dynamic marking. The piano part has various notes and rests, with some notes marked with accents (^).

Handwritten musical score for measures 28-30, system 3. The score is written on a grand staff. Measure 28 shows a forte (f) dynamic marking. Measure 29 features a forte (f) dynamic marking. The piano part has various notes and rests, with some notes marked with accents (^).

30

Handwritten musical score for measures 31-32. The score consists of three staves: two for strings (violin and viola) and one for piano. The piano part has a section labeled "Block (B)". Measure 31 is circled, and measure 32 is also circled. There are handwritten notes and arrows indicating "letzten 4 Takte noch-mals" (last 4 measures again).

Handwritten musical score for measures 33-34. The score consists of three staves: two for strings (violin and viola) and one for piano. The piano part has a section labeled "Solo". Measure 33 is circled, and measure 34 is also circled.

Handwritten musical score for measures 35-39. The score consists of three staves: two for strings (violin and viola) and one for piano. The piano part has a section labeled "Solo". Measures 34 and 35 are circled. There are handwritten notes and arrows indicating "Block (B)" and "(4 Takte)". Measure 39 is circled and labeled "CODA!".

34

Solo (dim)

dim

(p) > (pp) =

35

Solo

G.P.

(folgt Teil 2 bis ☒ (ohne ||:|)!)
(18)

G.P.

(folgt D.C. Teil 3 ad ⊕ CODA)

⊕ CODA (sempre dim)

Block C

sempre dim (bis ppp)

Block [C] > dim (A)

> (Block [C]) > (B)

(P) > > (Block [C]) (C)

pp Block [C] > ppp > (D)

Handwritten musical score for the first system. It consists of four staves: piano (top), bass (second), cello (third), and a fourth staff (likely double bass). The piano part includes notes with accents and dynamic markings like ppp and pp . The bass part has a long horizontal line with a circled 'E' at the end. The cello part has notes with accents and dynamic markings like ppp . The fourth staff has a long horizontal line with a circled 'E' at the end. Annotations include 'Pedal' and 'Peds out'.

Handwritten musical score for the second system. It consists of four staves: piano (top), bass (second), cello (third), and a fourth staff (likely double bass). The piano part has notes with accents and dynamic markings like ppp . The bass part has a long horizontal line with a circled 'F' and 'AN' at the end. The cello part has notes with accents and dynamic markings like ppp . The fourth staff has a long horizontal line with a circled 'F' and 'AN' at the end. Annotations include 'Lunga' and 'ppp'.

Adolf
Scherker