

MUSIK



Quartett in 3 Teilen

für

1. Piano

2. Baß

3. (Schlagzeug)
(Vibraphon)

4. Sax + Flöte (Sax in C notiert)

Herausgegeben von der Arbeitsgemeinschaft der Musikerzieher Österreichs

ÖSTERREICHISCHER BUNDESVERLAG WIEN

Inge Adenkel-Schreibaum

Teil 1

RUHIG / Mod.

①

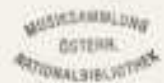
②

D-1-A-20

Baß
Schlag

③

④



4

5

Handwritten musical score for measures 4 and 5. Measure 4 features a complex piano part with many sixteenth notes and a bass line with quarter notes. Measure 5 is mostly empty with a few notes in the piano part.

6

Handwritten musical score for measure 6. The piano part has a melodic line with slurs and accents, and the bass line has a rhythmic pattern of eighth notes.

⑥ *appassionata*

Handwritten musical score for measures 6, 7, and 8. Measure 6 features a treble clef with a melodic line of eighth notes and a bass clef with a bass line. Measure 7 continues the melodic line with a fermata. Measure 8 shows a melodic line with a sharp sign and a bass line with a sharp sign. The score includes various musical notations such as accents, slurs, and dynamic markings.

Handwritten musical score for measures 9, 8, and 9. Measure 9 features a treble clef with a melodic line of eighth notes and a bass clef with a bass line. Measure 8 continues the melodic line with a fermata. Measure 9 shows a melodic line with a sharp sign and a bass line with a sharp sign. The score includes various musical notations such as accents, slurs, and dynamic markings.

Handwritten musical score for Schumann's "Adie" in G major, Op. 145, measures 9-12. The score is for Piano, Bass, Clarinet, and Flute. It features a treble and bass clef system with a key signature of one sharp (F#). Measure 9 shows a melodic line in the treble and a bass line with chords. Measure 10 has a repeat sign and a fermata. Measure 11 has a fermata and a triplet. Measure 12 has a fermata and a "poco rit" marking. Rhythmic markings like "u", "3", and "u" are present below the staves.

Piano (frei (sehr rasch) rubato)

Handwritten musical score for the first system. The top staff is in treble clef with a key signature of one flat (B-flat). The bottom staff is in bass clef. The music consists of four measures. The first measure has a piano dynamic marking (p) and a common time signature (C). The notation includes chords and melodic lines with slurs. A long slur spans across the bottom staff, indicating a sustained bass line or pedal point.

Handwritten musical score for the second system. The top staff is in treble clef with a key signature of one flat (B-flat). The bottom staff is in bass clef. The music consists of four measures. The first measure has a sharp sign (#) in the bass clef. The notation includes chords and melodic lines with slurs and accents (^). A long slur spans across the bottom staff, indicating a sustained bass line or pedal point.

93

frei $\frac{4}{4}$ | breit

mit

13 14

rittolein

rittolein

15 16

Handwritten musical score for three systems. The notation includes treble and bass clefs, various notes, rests, and dynamic markings.

System 1 (Measures 17-18):

- Measure 17: Treble clef has notes f , a , b , b , b , b , b , b . Bass clef has notes a , b , b , b , b , b . Pedal marking: "Pedal".
- Measure 18: Treble clef has notes g , $\sharp f$, $\sharp f$, $\sharp g$, $\sharp g$. Bass clef has notes a , b , b , b , b , b . Pedal marking: "Pedal p=".

System 2 (Measures 19-20):

- Measure 19: Treble clef has notes g , g , $\sharp f$, $\sharp f$. Bass clef has notes a , b , b , b , b , b . Pedal marking: "Pedal".
- Measure 20: Treble clef has notes $\sharp f$, $\sharp f$, $\sharp g$, $\sharp g$, $\sharp f$, f . Bass clef has notes a , b , b , b , b , b . Pedal marking: "Pedal out".

Additional annotations include "RUMIG" above measure 18, "Baß tacet bis x" below measure 18, and "add. lib. R.C. Teil" below measure 17.

20 vorwärts →

p = Pedal

x Bass (P133)

21

Pedal

f =

f =

22

23

appassionata - vorwärts

22

23

accel.

Presto

Handwritten musical score for measures 24 and 25. The score is written on three staves: Treble Clef (top), Bass Clef (middle), and Bass Clef (bottom). Measure 24 shows a treble staff with a melodic line starting on G4, moving to A4, B4, and C5, with a sharp sign above the first measure. The bass staff has a bass line starting on G2, moving to F2, E2, and D2. Measure 25 shows a treble staff with a melodic line starting on D5, moving to E5, F5, and G5, with a sharp sign above the first measure. The bass staff has a bass line starting on G2, moving to F2, E2, and D2. There are various musical notations including slurs, accents, and dynamic markings like 'p' and 'f'.

Handwritten musical score for measures 26 and 27. The score is written on three staves: Treble Clef (top), Bass Clef (middle), and Bass Clef (bottom). Measure 26 shows a treble staff with a melodic line starting on G4, moving to A4, B4, and C5, with a sharp sign above the first measure. The bass staff has a bass line starting on G2, moving to F2, E2, and D2. Measure 27 shows a treble staff with a melodic line starting on D5, moving to E5, F5, and G5, with a sharp sign above the first measure. The bass staff has a bass line starting on G2, moving to F2, E2, and D2. There are various musical notations including slurs, accents, and dynamic markings like 'p' and 'f'.

26

27

Handwritten musical score for measures 26-27, system 1. The system consists of a treble clef staff and a bass clef staff. The treble staff contains notes with stems and beams, and rests. Above the treble staff, there are handwritten notes in a non-standard notation system, possibly representing fingerings or specific articulations. The bass staff contains notes with stems and beams, and rests. Below the bass staff, there are handwritten notes in the same non-standard notation system. The measures are numbered 26 and 27 in circles at the top corners.

28

Handwritten musical score for measures 28-31, system 2. The system consists of a treble clef staff and a bass clef staff. The treble staff contains notes with stems and beams, and rests. Above the treble staff, there are handwritten notes in a non-standard notation system, possibly representing fingerings or specific articulations. The bass staff contains notes with stems and beams, and rests. Below the bass staff, there are handwritten notes in the same non-standard notation system. The measures are numbered 28, 29, 30, and 31 in circles at the top corners.

29

Bass/Solo

30

Bass/facet

Solo

Solo

(30)

(31)

Handwritten musical score for measures 30 and 31. The score is written on three staves: two for the piano (treble and bass clefs) and one for the Bass (bass clef). The piano part features chords with accents and dynamics like *pp*. The Bass part features rhythmic patterns with stems and flags, and dynamics like *pp* and *pp*.

Measure 30:
 Piano: Treble clef, chords with accents. Bass clef, chords with *pp*.
 Bass: Treble clef, rhythmic patterns with stems and flags, dynamics *pp*.

Measure 31:
 Piano: Treble clef, chords with accents. Bass clef, chords with *pp*.
 Bass: Treble clef, rhythmic patterns with stems and flags, dynamics *pp*.

(32)

Handwritten musical score for measures 32 and 33. The score is written on three staves: two for the piano (treble and bass clefs) and one for the Bass (bass clef). The piano part features chords with accents and dynamics like *pp*. The Bass part features rhythmic patterns with stems and flags, and dynamics like *pp* and *pp*.

Measure 32:
 Piano: Treble clef, chords with accents. Bass clef, chords with *pp*.
 Bass: Treble clef, rhythmic patterns with stems and flags, dynamics *pp*.

Measure 33:
 Piano: Treble clef, chords with accents. Bass clef, chords with *pp*.
 Bass: Treble clef, rhythmic patterns with stems and flags, dynamics *pp*.

1.

Schlag 3. Solo

33

34

35

mit ||: ||

2.

P. A. 20

Bass

Schlagzeug

Prestissimo

1 2 3 4 5 6 7

34

ppp

frei Pianos Solo / ruhig

pp rit. *Lento*

Teil 2

②

Flöte Solo (pauz frei) mit Verstärkermikrofon (mit Hall)

Handwritten musical notation for the first staff, featuring a treble clef, a key signature of one sharp (F#), and a 3/4 time signature. The music consists of a single melodic line with various notes, rests, and slurs. A circled '1' is written above the staff. The dynamics 'p' and '<' are indicated at the beginning.

Handwritten musical notation for the second staff, featuring a treble clef, a key signature of one sharp (F#), and a 3/4 time signature. The music consists of a single melodic line with various notes, rests, and slurs. A circled '2' is written above the staff. The dynamics 'f' and '>' are indicated at the beginning.

Handwritten musical notation for a single staff, likely a violin or flute part. The notation includes a treble clef, a key signature of one sharp (F#), and a 2/4 time signature. The music features a series of notes with various articulations, including accents (^) and slurs. Dynamics markings include *f* (forte) and *p* (piano). Performance instructions include *rubato* and *ruhig* (calmly). The piece concludes with a circled number 4.

Handwritten musical score for Piano, consisting of a treble clef staff and a bass clef staff. The treble staff begins with the instruction *appassionato* (passionately) and *benigno* (benign). The bass staff is labeled **P I A N O**. The score includes dynamics such as *f* and *frei* (ad libitum). The music is characterized by complex rhythmic patterns and slurs. The piece ends with a circled number 6.

wieder (paus frei)

Handwritten musical score for measures 7 and 8. The system includes a treble clef staff with a piano (*p*) dynamic marking and a bass clef staff with a piano (*p*) dynamic marking. The key signature is one sharp (F#). Measure 7 contains a melodic line with slurs and accents, and a bass line with a long note. Measure 8 continues the melodic line. A circled number 7 is at the end of the system.

||

Handwritten musical score for measures 9 and 10. The system includes a treble clef staff with a piano (*p*) dynamic marking and a bass clef staff with a piano (*p*) dynamic marking. The key signature is one flat (Bb). Measure 9 contains a melodic line with slurs and accents, and a bass line with a long note. Measure 10 continues the melodic line with a forte (*f*) dynamic marking. A circled number 8 is at the end of the system.

Mod. assai

Flöte

Flöte

Piano

9

10

The image displays two systems of handwritten musical notation. Each system consists of three staves: a top staff for the flute, a middle grand staff for the piano (treble and bass clefs), and a bottom staff for the bass. The first system begins with a piano dynamic marking (*p*) and a key signature of one flat. The flute part features a melodic line with slurs and accents, while the piano accompaniment provides harmonic support with chords and moving lines. The second system starts with a forte dynamic marking (*ff*) and a key signature change to one sharp. The flute part continues with a more active melodic line, and the piano accompaniment includes a prominent bass line. The system concludes with a circled measure number '12'.

Handwritten musical score for measures 13-14. The system consists of three staves: a single treble clef staff at the top, and a grand staff (treble and bass clefs) below. The top staff contains a melodic line with slurs and accents, marked with *f* and *Flautoz.*. The grand staff contains a piano accompaniment with chords and a bass line. Measure 13 is circled in the top right corner.

Handwritten musical score for measures 15-16. The system consists of three staves: a single treble clef staff at the top, and a grand staff (treble and bass clefs) below. The top staff contains a melodic line with slurs and accents, marked with *f*. The grand staff contains a piano accompaniment with chords and a bass line. Measure 15 is circled in the top right corner.

sempre Steigerung  And. Scherzo in G-dur op. 3 Teil 1 für Piano, Harf. (Schubert'sche Klavier), Bassophon und Fidele, BWV 145 (1808)
© 2004 Scherz Musik, Scherz Musik. Alle Rechte vorbehalten. 22

Handwritten musical score for a quartet, consisting of two systems of staves. Each system includes a vocal line (top), a piano accompaniment (middle, grand staff), and a bass line (bottom).

System 1 (Measures 14-15):

- Measure 14:** The vocal line features a series of chords with stems pointing up. The piano accompaniment has a melodic line with slurs and accents, and a bass line with quarter notes.
- Measure 15:** The vocal line continues with chords and a wavy line indicating a melisma. The piano accompaniment has a similar melodic line. The bass line continues with quarter notes.

System 2 (Measures 16-17):

- Measure 16:** The vocal line has chords and a wavy line. The piano accompaniment has a melodic line with slurs and accents. The bass line continues with quarter notes.
- Measure 17:** The vocal line has a final chord and a wavy line. The piano accompaniment has a melodic line with slurs and accents. The bass line continues with quarter notes.

zügig

Piano

f

Block A

17

Flöte Solo

f

Block A

24

Flöte

18

B.A.

20

Bl. A

(acc.) *immer turbulenter -*
(nur mit Kopfstock! - (Fingerregelung!))

21

fast (Presto)
(Tempo (sehr bewegt))

22

Handwritten musical notation for the first system. The top staff is in treble clef and contains a melodic line with various notes and rests. The bottom staff is a bass line with a wavy line and the text "Bl.A" written below it.

Handwritten musical notation for the second system. The top staff is in treble clef and contains a melodic line with various notes and rests. The bottom staff is a bass line with a wavy line and the text "Bl.A" written below it.

Handwritten musical notation for the third system. The top staff is in treble clef and contains a melodic line with various notes and rests. The bottom staff is a bass line with a wavy line and the text "Bl.A" written below it. A circled number "23" is at the end of the system.

Presto

PIANO

Baß (pizz)

Schlagg.

(25)

Handwritten musical score for measures 25-26. The score is written on a grand staff (treble and bass clefs). The key signature is one sharp (F#) and the time signature is 3/4. The melody in the treble clef consists of quarter notes with accents: G4, A4, B4, G4, F#4, E4, D4. The bass clef staff shows a simple accompaniment of quarter notes: G2, A2, B2, G2, F#2, E2, D2. A piano (p) dynamic marking is present at the start. Measure 26 ends with a fermata over a whole note chord.

(26)

Handwritten musical score for measures 27-28. The score is written on a grand staff (treble and bass clefs). The key signature is one sharp (F#) and the time signature is 3/4. The melody in the treble clef consists of quarter notes with accents: G4, A4, B4, G4, F#4, E4, D4. The bass clef staff shows a simple accompaniment of quarter notes: G2, A2, B2, G2, F#2, E2, D2. A piano (p) dynamic marking is present at the start. Measure 28 ends with a fermata over a whole note chord.

(27)

27

28

Handwritten musical score for measures 27 and 28. Measure 27 features three staves. The top staff has a complex chordal texture with many notes and accidentals, including a sharp sign above the first measure. The middle staff has a whole rest. The bottom staff has a rhythmic pattern of eighth notes. Measure 28 continues with similar textures, ending with a fermata on the top staff.

29

Handwritten musical score for measure 29. The top staff has a complex chordal texture. The middle staff has a melodic line with eighth notes. The bottom staff has a rhythmic pattern of eighth notes. The measure ends with a fermata on the top staff.

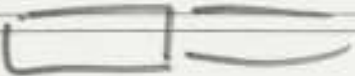
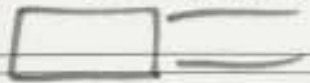
The image shows a handwritten musical score for a quartet, consisting of two systems of staves. The notation is in a shorthand style, using letters and symbols to represent notes and rests. The first system has five staves, and the second system has five staves. The notation includes various note values, rests, and dynamic markings such as accents (<), slurs, and hairpins. The score is written on a page with a circled number '30' in the bottom right corner.

PIANO

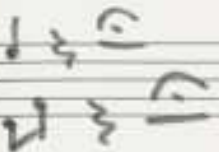
Pedal



dicht. Cluster (liegen lassen bis pp)



Schlagz. Solo / zweies Solo



> (dim) bis pp

G.P.

31

Flöte Solo (ganz frei) mit Verstärkermikrofon (Hall)

Handwritten musical notation for measures 31-32. The notation is on a single staff with a treble clef and a key signature of one sharp (F#). It features a series of eighth and sixteenth notes with various articulations like accents (^) and slurs. Measure 31 starts with a dynamic marking 'p'. Measure 32 ends with a circled measure number '32'.

Handwritten musical notation for measures 33-34. The notation is on a single staff with a treble clef and a key signature of one sharp (F#). It continues the melodic line with slurs and accents. Measure 33 starts with a dynamic marking 'f'. Measure 34 ends with a circled measure number '34'.

ganz frei

Flöte

VIBRAPHON

Pedal

bis

ruhig

Handwritten musical score for piano and bass. The piano part is on a grand staff with treble and bass clefs. The bass part is on a single staff with a bass clef. The score includes a triplet in the piano part, a "Lento" tempo marking, and various dynamics like "p", "pp", and "f". The piece ends with a double bar line and a wavy line.

zweite 4/4

Teil 3

1

PIANO

4

Baß

Op. 133 ff

Schlagzeug

f

Handwritten musical score for measures 1-3. The score is written on three staves: Treble clef (top), Bass clef (middle), and Bass clef (bottom). Measure 1 starts with a sharp sign (#) in the treble clef. The music includes various notes, rests, and accidentals. Measure 2 has a circled '2' above it. Measure 3 has a circled '3' above it. A bracket with the number '3' is under the first measure of the bottom staff.

Handwritten musical score for measures 4-5. The score is written on three staves: Treble clef (top), Bass clef (middle), and Bass clef (bottom). Measure 4 has a circled '4' above it. Measure 5 has a circled '5' above it. The first measure of the middle staff is labeled "letzten 4 Takte" and the first measure of the bottom staff is labeled "wiederholt". The music includes various notes, rests, and accidentals.

⑤

⑥

⑦

7

impressionista

8

Handwritten musical score for a piano quartet, measures 7-10. The score is written on three staves (treble, alto, and bass clefs) and includes various musical notations such as notes, rests, slurs, and dynamic markings. Measure 7 starts with a treble clef staff containing a triplet of eighth notes and a slur. The alto and bass clef staves have notes and rests. Measure 8 continues the melodic lines. Measure 9 shows a change in the bass clef staff with a triplet. Measure 10 ends with a double bar line and a fermata-like symbol.

10

Handwritten musical score for a quartet in 3 parts. The score is divided into two systems. The first system contains measures 11, 12, and 13. The second system contains measures 14, 15, and 16. The notation includes treble, alto, and bass clefs, various note values, rests, and dynamic markings like accents and slurs. Measure numbers 11, 13, and 16 are circled. The piece concludes with a double bar line and repeat signs.

Presto

PIANO

G.P.

Pedal

Ped. *con*

14

15

folgt über Lautsprecher (im Saal verteilt)! Flöten solo
 aus Teil (2) vom Anfang bis (4) (=)
 (Tonband.....)

freies Bass Solo

Handwritten musical notation for the first staff of a bass solo. It is in 4/4 time and consists of four measures. The first measure has a piano (p) dynamic and a mezzo-forte (mf) marking. The second measure has a triplet of eighth notes. The third measure has accents (>) and an accent (<) over notes. The fourth measure has a forte (f) dynamic and a 'rubato' marking.

Handwritten musical notation for the second staff of a bass solo. It continues from the first staff and includes markings for 'accel.' and 'Presto'. The piece ends with a circled number 16.

No. 17 Presto

Handwritten musical score for measures 17-18. The score is written on three staves: Flute (top), Bassoon (middle), and Clarinet (bottom). The tempo is marked 'Presto'. The music features complex rhythmic patterns and dynamic markings such as 'p' (piano) and 'f' (forte). Measure 17 is circled in red. The notation includes various note values, rests, and articulation marks.

Handwritten musical score for measures 19-20. The score continues on the three staves: Flute, Bassoon, and Clarinet. The music features complex rhythmic patterns and dynamic markings such as 'p' (piano) and 'f' (forte). Measure 19 is circled in red. The notation includes various note values, rests, and articulation marks.

18

Handwritten musical score for measures 18 and 19. The score is written for Violin I, Violin II, and Piano. Measure 18 begins with a piano introduction marked with a forte (f) dynamic. The piano part in measure 18 consists of a sequence of notes: b, d, d, d . In measure 19, the piano part continues with d, b, d, b, d in the left hand and a melodic line in the right hand: b, b, b, b, b . The violin parts have various melodic fragments and rests.

19

Handwritten musical score for measures 20 through 24. The score is written for Violin I, Violin II, and Piano. Measure 20 begins with a piano introduction marked with a forte (f) dynamic. The piano part in measure 20 consists of a sequence of notes: d, d, d, d . In measure 21, the piano part continues with b, d, d, d in the left hand and a melodic line in the right hand: d, b, d, b, d . In measure 22, the piano part continues with d, d, d, d in the left hand and a melodic line in the right hand: d, b, d, b, d . In measure 23, the piano part continues with d, d, d, d in the left hand and a melodic line in the right hand: d, d, d, d . In measure 24, the piano part continues with d, d, d, d in the left hand and a melodic line in the right hand: d, d, d, d . The violin parts have various melodic fragments and rests.

20

Handwritten musical notation for measures 20-21. The system consists of three staves: Treble Clef (top), Bass Clef (middle), and Bass Clef (bottom). Measure 20 contains notes with accidentals and accents: $\hat{g} \hat{a} \hat{b} \hat{g}$, $\hat{g} \hat{b} \hat{g} \hat{a}$, and $\hat{g} \hat{b} \hat{g} \hat{g}$. Measure 21 contains a whole rest in the top staff and a quarter rest in the bottom staff.

Handwritten musical notation for measures 22-23. The system consists of three staves: Treble Clef (top), Bass Clef (middle), and Bass Clef (bottom). Measure 22 contains notes with accidentals and accents: $\hat{g} \hat{a} \hat{b} \hat{g}$, $\hat{g} \hat{b} \hat{g} \hat{a}$, and $\hat{g} \hat{b} \hat{g} \hat{g}$. Measure 23 contains a whole rest in the top staff and a quarter rest in the bottom staff.

Adolf Schubert, Quartet in 3 Teilen für Piano, Bass (Sitzgeige, Violine), Bassophon und Fidele, BWV 145 (1788)

© 2010 Inge Adami-Kel Scherbaum. Alle Rechte vorbehalten.

Handwritten musical score for three staves (Violin I, Violin II, Bass). The score consists of seven measures. Measure 23 is circled, and measure 24 is boxed. The bass line includes rhythmic notation and a key signature change to one sharp (F#). The upper staves use figured bass notation with various accidentals and stems.

Schlags. Peto

Handwritten musical notation for "Schlags. Peto" on a single staff. It features four numbered measures (1, 2, 3, 4) with dynamic markings *p* and *ff*. The final measure is circled and contains the number 25.

Bass
 Schlagzeug
 p =

Block B

(26)

Piccolo Solo
 p =

Block B

(27)

Solo

28

29

30

31

(Piano)
Solo

$f =$

Bl.

32

R.H.

ff L.H.

Bl.

33

Solo

34

35

RH
LH

36

36

fdo

37

38

39

39

sf

Handwritten musical notation for measure 39. The staff is in treble clef with a key signature of one sharp (F#) and a 3/4 time signature. The notation includes a series of notes with slurs and accents, and a fermata at the end of the measure.

40

Handwritten musical notation for measure 40. The staff is in treble clef with a key signature of one sharp (F#) and a 3/4 time signature. The notation includes a series of notes with slurs and accents, and a fermata at the end of the measure.

41

44 Solo

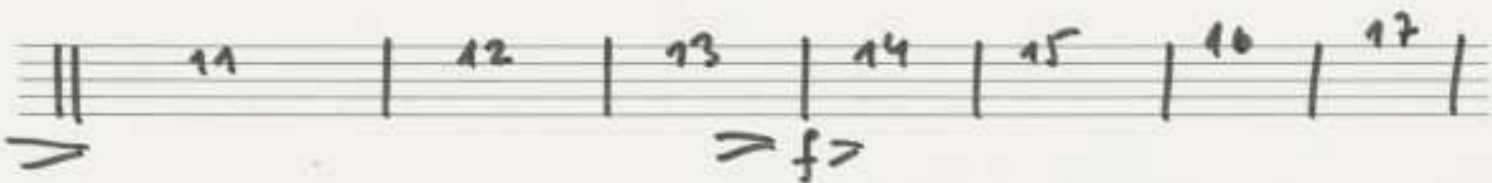
42

43

45

RH LH

Schlappz. Solo



(45) (mit Naturtr.)

(46)

Sat

Piano

Baß

Schlagzeug

Handwritten musical score for five staves. The notation includes notes, rests, and dynamic markings such as *p*, *pp*, and *ppp*. The score is divided into two systems by a double bar line. The first system contains the first four staves, and the second system contains the fifth staff. The fifth staff in the second system is marked *Solo*.

sempre dim (bis ppp)

48

Handwritten musical score for a quartet, page 48. The score is written on five staves. The top staff has a treble clef and contains a melodic line with slurs and accents. The second staff has a bass clef and contains a bass line with slurs and accents. The third and fourth staves are empty. The fifth staff has a bass clef and contains a bass line with slurs and accents. Below the staves, there are handwritten notes in Chinese characters and the letters 'Bl. C'. The page is numbered '48' in a circle in the top right corner.

frei) breit!

(freies Solo)

Free

kleine
G.P.

Pedal

rubato

mit...

(freies pizz Solo)

(freies Solo (mit Solo
Abschlag!))

Adolf Scherbaum
1988