

Sperrl Polka  
opus 133

Johann Strauss

---

bearbeitet =

DAUPE

SCHERBAUM

---

1884 Linz

ff

Handwritten musical notation for the first system. It consists of two staves. The top staff is a treble clef with a key signature of one flat and a 2/4 time signature. The bottom staff is a bass clef. The music is written in a shorthand style with vertical bar lines and various note heads and stems. The first two measures of the top staff contain rests. The first two measures of the bottom staff contain rhythmic patterns with stems and dots.

Handwritten musical notation for the second system. It consists of two staves. The top staff is a treble clef with a key signature of one flat. The bottom staff is a bass clef. The music continues in the same shorthand style as the first system, with vertical bar lines and various note heads and stems.

The image displays two systems of handwritten musical notation. Each system consists of two staves. The upper staff in each system is a vocal line, and the lower staff is a piano accompaniment line. The notation is written in black ink on a white background. The first system shows a vocal line with a treble clef and a key signature of one sharp (F#), and a piano accompaniment line with a bass clef and a key signature of one sharp. The second system shows a vocal line with a treble clef and a key signature of one sharp, and a piano accompaniment line with a bass clef and a key signature of one sharp. The notation includes various note values, rests, and dynamic markings.

letzter  
rit.

Handwritten musical score for the first system. It consists of two staves: a treble clef staff on top and a bass clef staff on the bottom. The key signature has one sharp (F#). The music includes several measures with notes, rests, and dynamic markings. A large 'FIN' is written above the first measure of the second staff. The system ends with a double bar line.

Handwritten musical score for the second system. It consists of two staves: a treble clef staff on top and a bass clef staff on the bottom. The key signature has one sharp (F#). The music continues with notes, rests, and dynamic markings. A circled 'D' is visible in the bass staff of the fourth measure. The system ends with a double bar line and a large handwritten 'X' to the right.

(poco rit)

# Trio

The image displays a handwritten musical score for a Trio section, consisting of two systems of staves. Each system contains two staves, likely representing different instruments or voices. The notation is dense and includes various note values, rests, and bar lines. The first system consists of four measures, and the second system also consists of four measures. The notation is somewhat abstract and appears to be a sketch or a specific style of shorthand. The word "Trio" is written in the top left corner. The score concludes with a double bar line at the end of the second system.

Handwritten musical notation on a five-line staff. The notation is dense and appears to be a form of shorthand or a specific dialect of musical notation. It includes various symbols, stems, and beams. A circled 'P' is visible in the second measure. The staff is divided into measures by vertical bar lines.

Handwritten musical notation on a five-line staff, continuing from the first system. It features similar dense notation with stems and beams. A circled 'P' is also present in the second measure of this system. The notation is highly stylized and difficult to decipher.

D. (111)

Hans Jörgel Polka  
Opus 184

Josef Lanner

---

bearbeitet:

A. Scherbaum  
Gitz

Handwritten musical score consisting of two systems. The top system features two staves with a treble clef, a key signature of one sharp (F#), and a 2/4 time signature. The bottom system features two staves with a treble clef and a key signature of one sharp. The notation is dense and appears to be a student exercise or a specific style of musical shorthand.



A handwritten musical score consisting of two staves. The top staff features a melodic line with various note values, including eighth and sixteenth notes, and rests. The bottom staff provides a harmonic accompaniment with chords and single notes. The notation is dense and appears to be a personal manuscript or a working draft. The paper shows signs of age, with some staining and a slightly yellowed tone.



Handwritten musical score for a piano piece, consisting of two systems of staves. The first system has four measures, and the second system has four measures. The notation includes treble and bass clefs, a key signature of one sharp (F#), and various musical symbols such as notes, rests, and dynamic markings.

**System 1:**

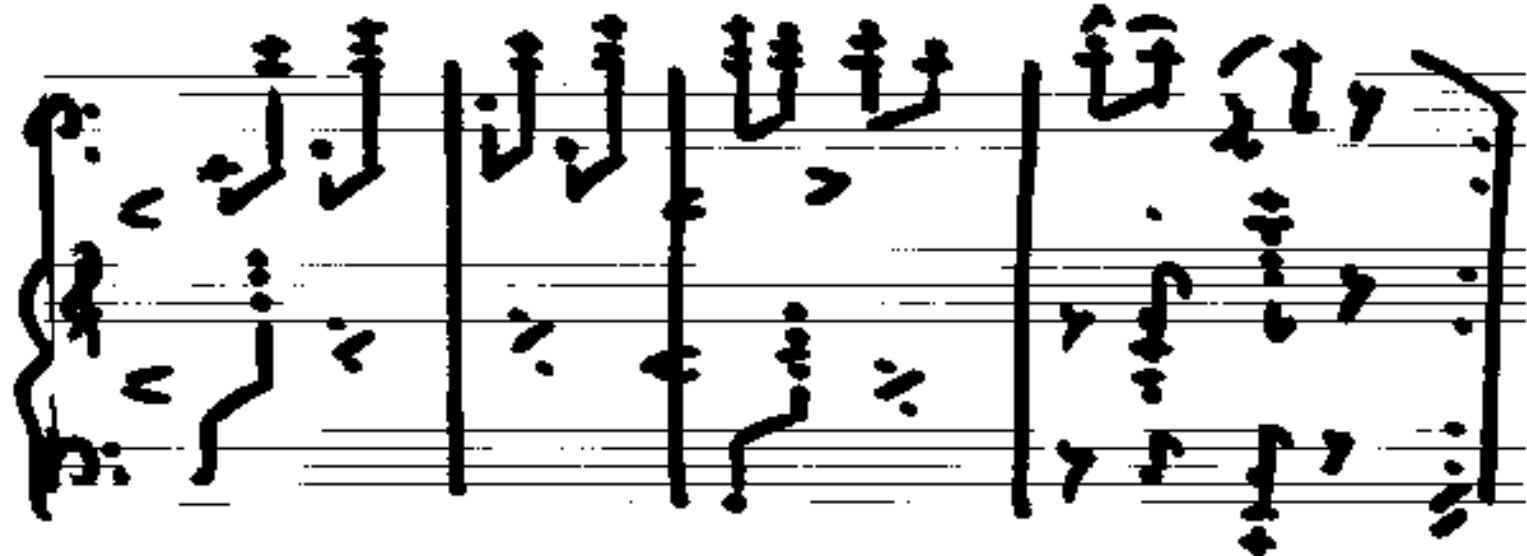
- Measure 1:** Treble clef has a whole rest. Bass clef has a quarter note G4, a quarter note A4, and a quarter note B4.
- Measure 2:** Treble clef has a quarter note G4, a quarter note A4, and a quarter note B4. Bass clef has a quarter note G4, a quarter note A4, and a quarter note B4.
- Measure 3:** Treble clef has a whole rest. Bass clef has a quarter note G4, a quarter note A4, and a quarter note B4.
- Measure 4:** Treble clef has a whole rest. Bass clef has a quarter note G4, a quarter note A4, and a quarter note B4.

**System 2:**

- Measure 1:** Treble clef has a quarter note G4, a quarter note A4, and a quarter note B4. Bass clef has a quarter note G4, a quarter note A4, and a quarter note B4.
- Measure 2:** Treble clef has a quarter note G4, a quarter note A4, and a quarter note B4. Bass clef has a quarter note G4, a quarter note A4, and a quarter note B4.
- Measure 3:** Treble clef has a whole rest. Bass clef has a quarter note G4, a quarter note A4, and a quarter note B4.
- Measure 4:** Treble clef has a whole rest. Bass clef has a quarter note G4, a quarter note A4, and a quarter note B4.

Handwritten musical score for the first system. It consists of three staves: Treble Clef (top), Alto Clef (middle), and Bass Clef (bottom). The music is written in a style that appears to be a transcription of a vocal or instrumental piece. The first staff contains a melodic line with a key signature of one sharp (F#) and a common time signature (C). The second and third staves provide harmonic accompaniment. The system concludes with a double bar line.

Handwritten musical score for the second system. It consists of three staves: Treble Clef (top), Alto Clef (middle), and Bass Clef (bottom). The notation continues from the first system. The first staff shows a melodic line with a key signature of one sharp (F#) and a common time signature (C). The second and third staves provide harmonic accompaniment. The system concludes with a double bar line.



Handwritten musical notation for the first system, consisting of two staves. The top staff features a melodic line with a slur over the first two measures and a circled 'P' in the third measure. The bottom staff provides a bass line accompaniment.

Handwritten musical notation for the second system, consisting of two staves. The notation continues from the first system. The bottom staff concludes with the tempo marking "poco rit." written below the staff.

**Tempo**

Handwritten musical notation for the first system, consisting of two staves. The top staff has a treble clef and the bottom staff has a bass clef. The music is written in a rhythmic style with vertical stems and horizontal lines, typical of early manuscript notation.

Handwritten musical notation for the second system, consisting of two staves. The top staff has a treble clef and the bottom staff has a bass clef. The music continues with similar notation to the first system.

D. C.  $\text{rit}$   $\text{f}$   $\text{coda}$

♣ COPA (and.)

Handwritten musical score for the first system of 'COPA (and.)'. The score is written on two staves. The top staff is in treble clef with a key signature of one sharp (F#) and a 2/4 time signature. It contains four measures of music, with the first two measures grouped by a slur. The bottom staff is in bass clef with a key signature of one sharp (F#) and a 4/4 time signature. It contains four measures of music, with the first two measures grouped by a slur. The notation is handwritten and includes various notes, rests, and slurs.

Handwritten musical score for the second system of 'COPA (and.)'. The score is written on two staves. The top staff is in treble clef with a key signature of one sharp (F#) and a 2/4 time signature. It contains four measures of music, with the first two measures grouped by a slur. The bottom staff is in bass clef with a key signature of one sharp (F#) and a 4/4 time signature. It contains four measures of music, with the first two measures grouped by a slur. The notation is handwritten and includes various notes, rests, and slurs.



PRESTO

Handwritten musical notation for the first system. The top staff is a piano part with a slur over the first two measures and a treble clef. The middle staff is a treble clef staff with a key signature of one sharp (F#) and a common time signature (C). The bottom staff is a bass clef staff with a common time signature (C). The music consists of three measures, each separated by a bar line.

Handwritten musical notation for the second system. The top staff is a treble clef staff with a common time signature (C). The middle staff is a bass clef staff with a common time signature (C). The bottom staff is a bass clef staff with a common time signature (C). The music consists of four measures, each separated by a bar line. The final measure of the bottom staff is heavily scribbled over with black ink.